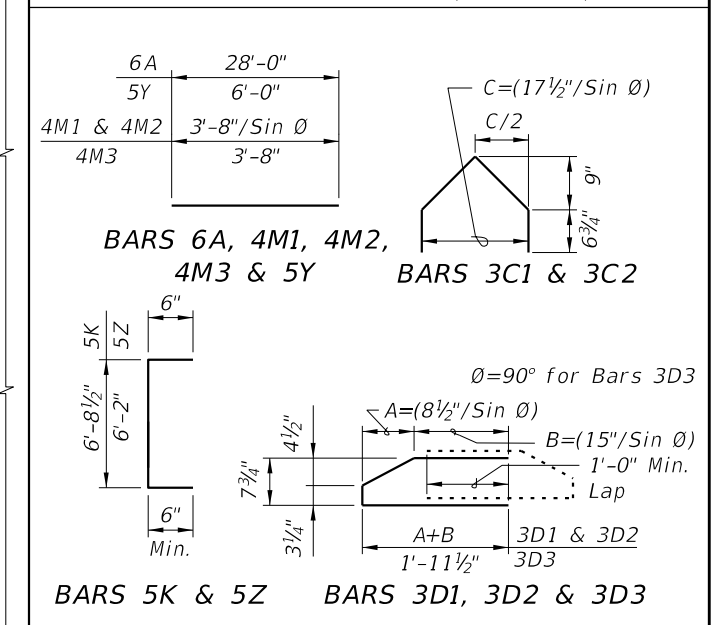


**CONVENTIONAL REINFORCING  
BAR BENDING DETAILS**

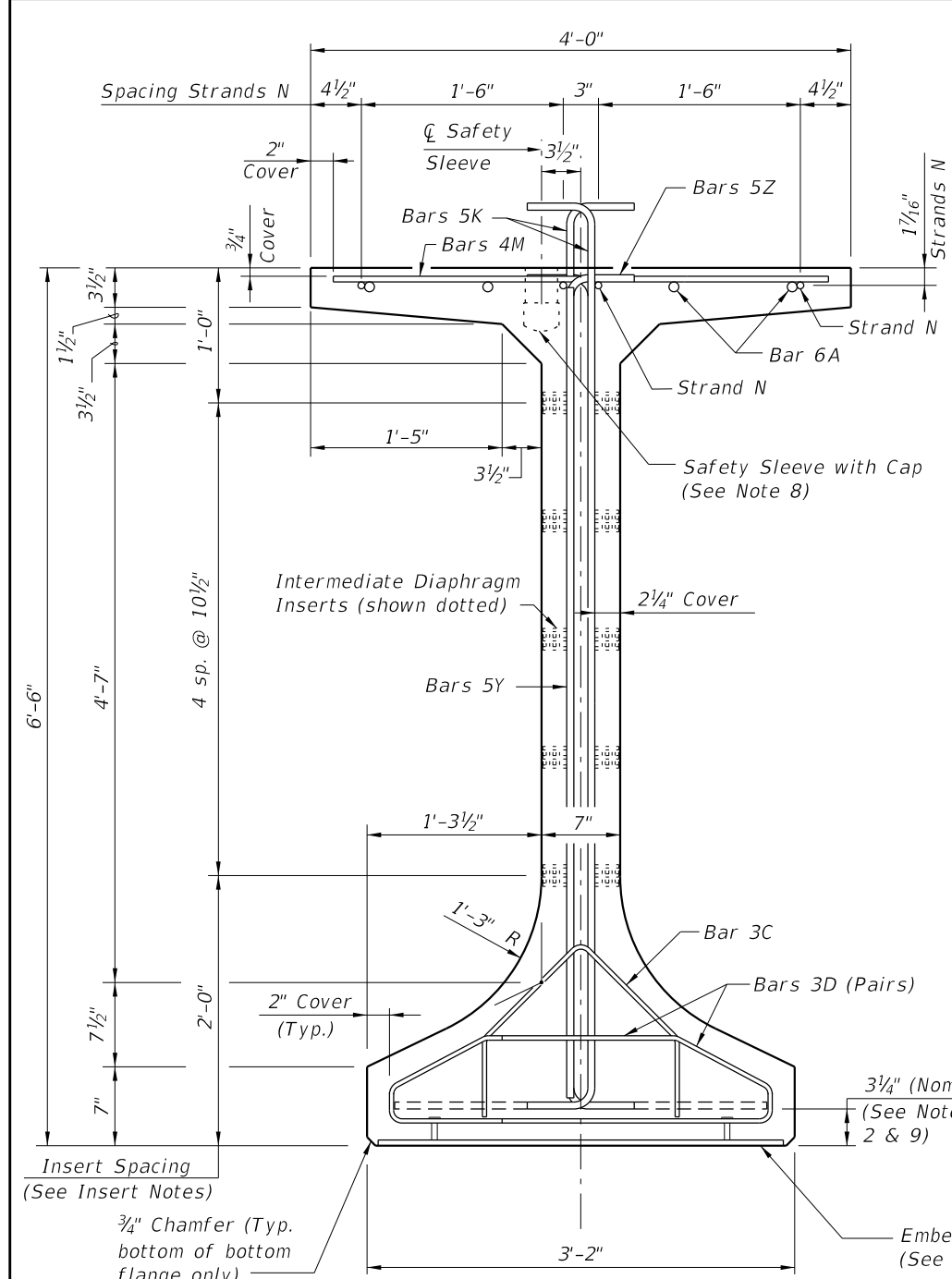
**BILL OF REINFORCING STEEL**

MARK	NOTE NUMBERS	SIZE	NUMBER REQUIRED	LENGTH (NOTE 1)
A	—	6	8	28'-0"
C1	9, 10 & 11	3	20 (End 1)	Varies
C2	9, 10 & 11	3	20 (End 2)	Varies
D1	9, 10, 11 & 14	3	40 (End 1)	Varies
D2	9, 10, 11 & 14	3	40 (End 2)	Varies
D3	9 & 14	3	See Table	4'-3"
K	2, 9, 11 & 13	5	See Table	7'-8"
M1	9 & 10	4	18 (End 1)	Varies
M2	9 & 10	4	18 (End 2)	Varies
M3	9	4	See Table	3'-8"
N	3 & 4	3/8" Ø Strand	4	DIM L
Y	9 & 11	5	16	6'-0"
Z	2, 9, 11 & 13	5	12	7'-2"

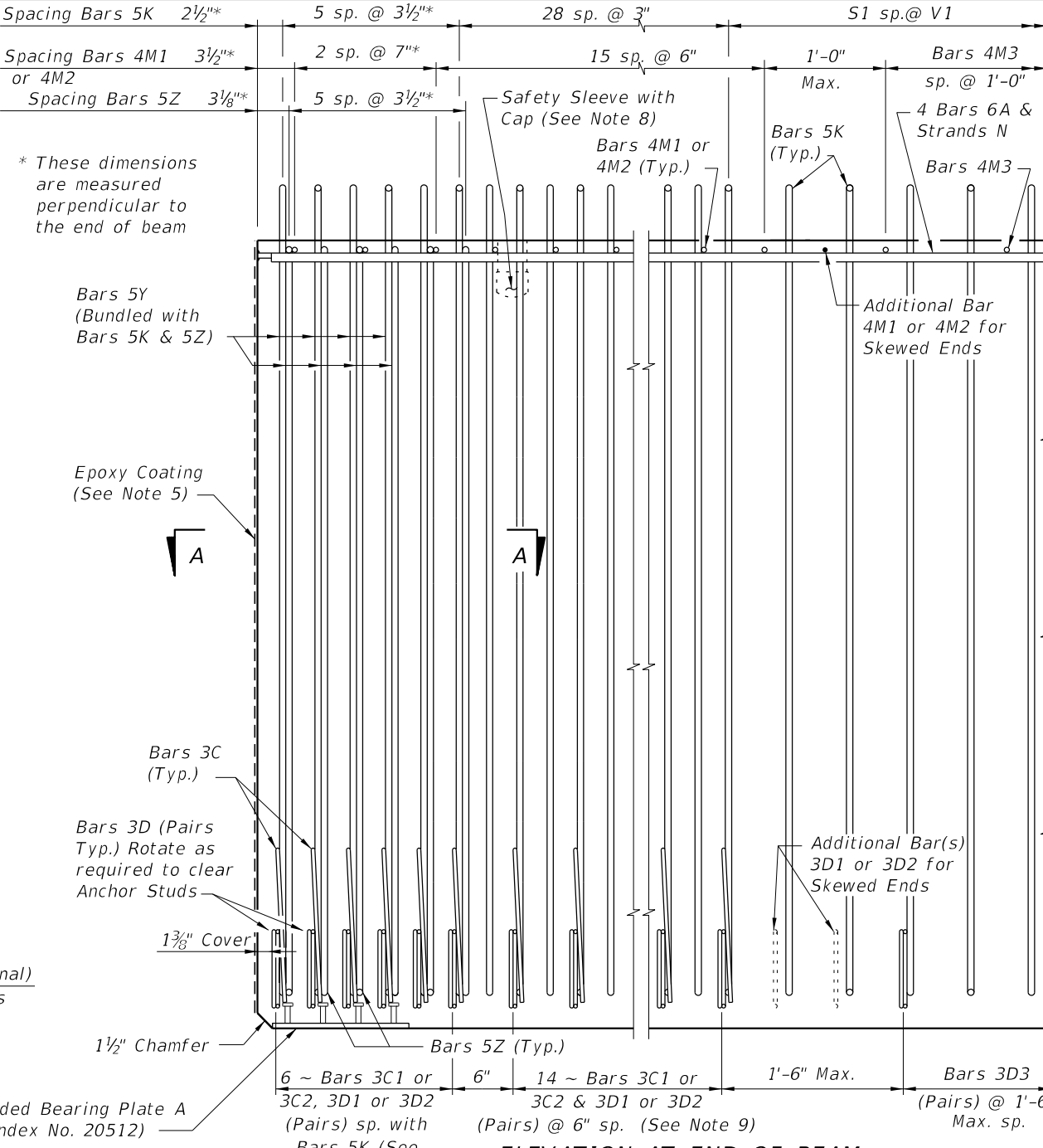
**BENDING DIAGRAMS (See Note 1)**



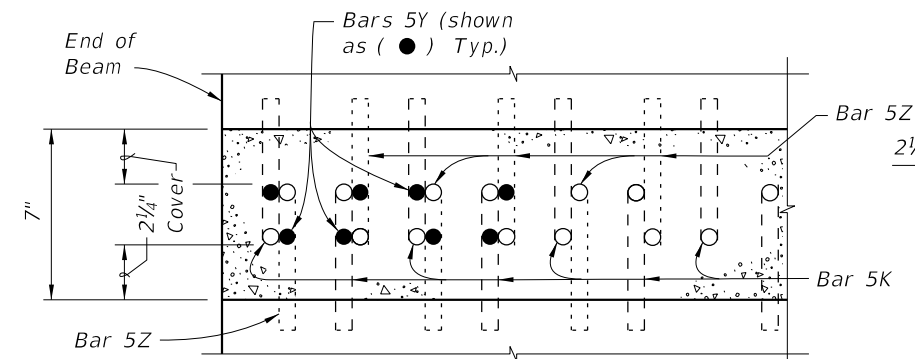
**NOTES:**  
 A. Work this Index with Index No. 20010 - Typical Florida-I Beam Details and Notes and the Florida-I Beam - Table of Beam Variables in Structures Plans.  
 B. For referenced notes, see Index No. 20010.  
 C. For Dimensions A, B, C, D, L, R & V1 and number of spaces S1 thru S4, see Florida-I Beam - Table of Beam Variables in Structures Plans.



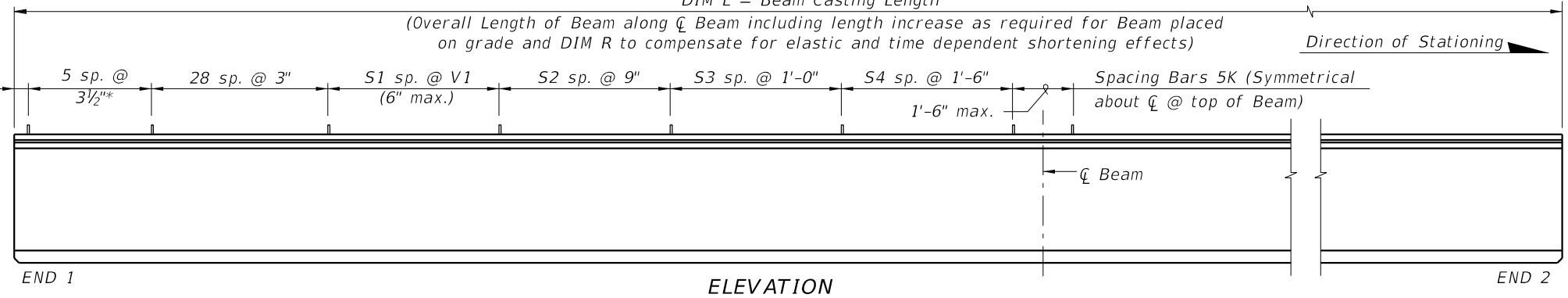
**END VIEW**



**ELEVATION AT END OF BEAM  
(Flanges Not Shown For Clarity)  
(End 1 Shown, End 2 Similar)**



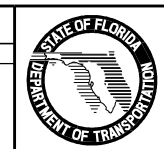
**SECTION A-A FOR CONVENTIONAL REINFORCING  
(Showing Bars 5K, 5Y & 5Z Only)**



**ELEVATION**

**REVISIONS**

DATE	BY	DESCRIPTION	DATE	BY	DESCRIPTION
01/01/10	RMS	New Design Standard			
07/01/10	SJN	Deleted Bars 4L; Changed NOTE NUMBERS for Strand N; and Embedded Bearing Plate A to Index No. 20512; Added Epoxy Coating to end of beam.			

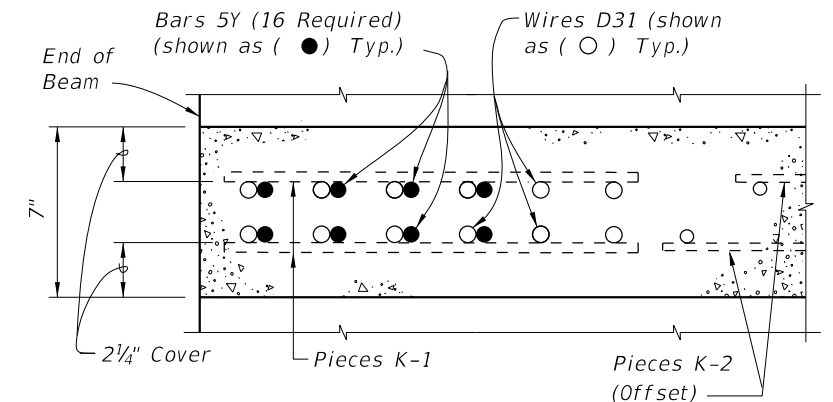
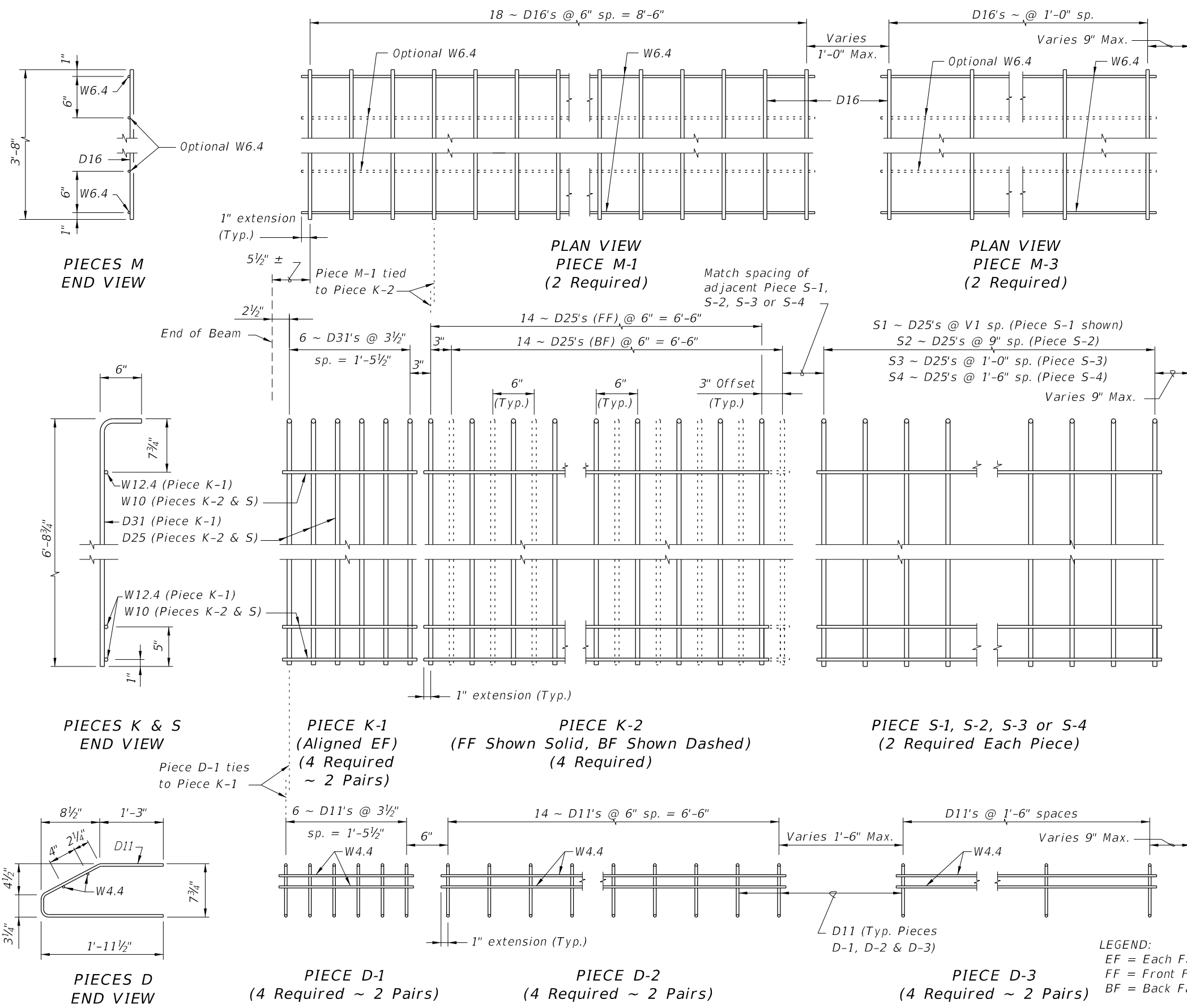


2010 Interim Design Standard

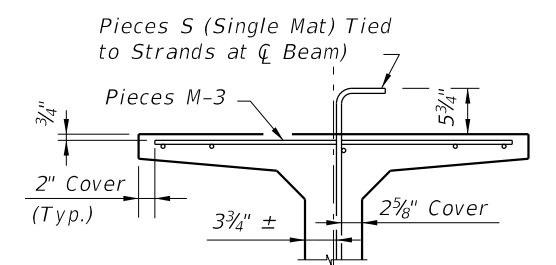
**FLORIDA-I 78 BEAM - STANDARD DETAILS**

Interim Date: 07/01/10  
 Sheet No.: 1 of 2  
 Index No.: 20078

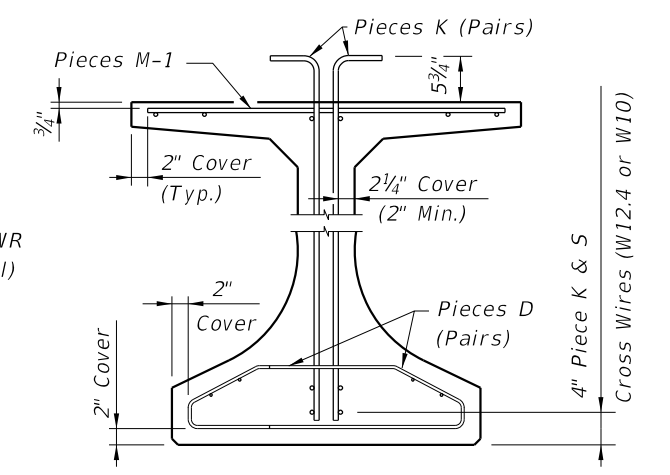
ALTERNATE REINFORCING STEEL (WELDED WIRE REINFORCEMENT) DETAILS



SECTION A-A FOR WELDED WIRE REINFORCEMENT



PARTIAL SECTION AT CENTER BEAM

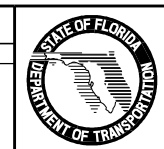


PARTIAL BEAM END VIEW (Conventional Reinforcing Bars A, C, Y and Strands N not Shown for Clarity)

- NOTES:
- See Sheet 1 for placement details & Table of Beam Variables in Structures Plans for variables S1, S2, S3, S4 & V1.
  - Place Conventional Reinforcement Bars 6A & 3C as shown on Sheet 1. Place additional Bars 5Y as shown in Section A-A for Welded Wire Reinforcement. Bars 5Z will not be used with the WWR Option.
  - Pieces may be fabricated in multiple length sections.
  - For beams with skewed end conditions, Pieces D-1, D-2 & M-1 shall not be used; Conventional Reinforcement Bars D1, D2, C1, C2, M1 & M2 shall be used. See Index No. 20010 Skew Details and Note 9 for placement details. Shift Pieces K & Bars 5Y to accommodate skewed end conditions and align with Bars C and D.

LEGEND:  
 EF = Each Face  
 FF = Front Face  
 BF = Back Face

REVISIONS			
DATE	BY	DESCRIPTION	
01/01/10	RMS	New Design Standard	
07/01/10	SJN	Deleted Bars L references; Changed interior W6.4 wires to "Optional" for PIECES M.	



2010 Interim Design Standard

Interim Date: 07/01/10  
 Sheet No.: 2 of 2

FLORIDA-I 78 BEAM - STANDARD DETAILS

Index No. 20078