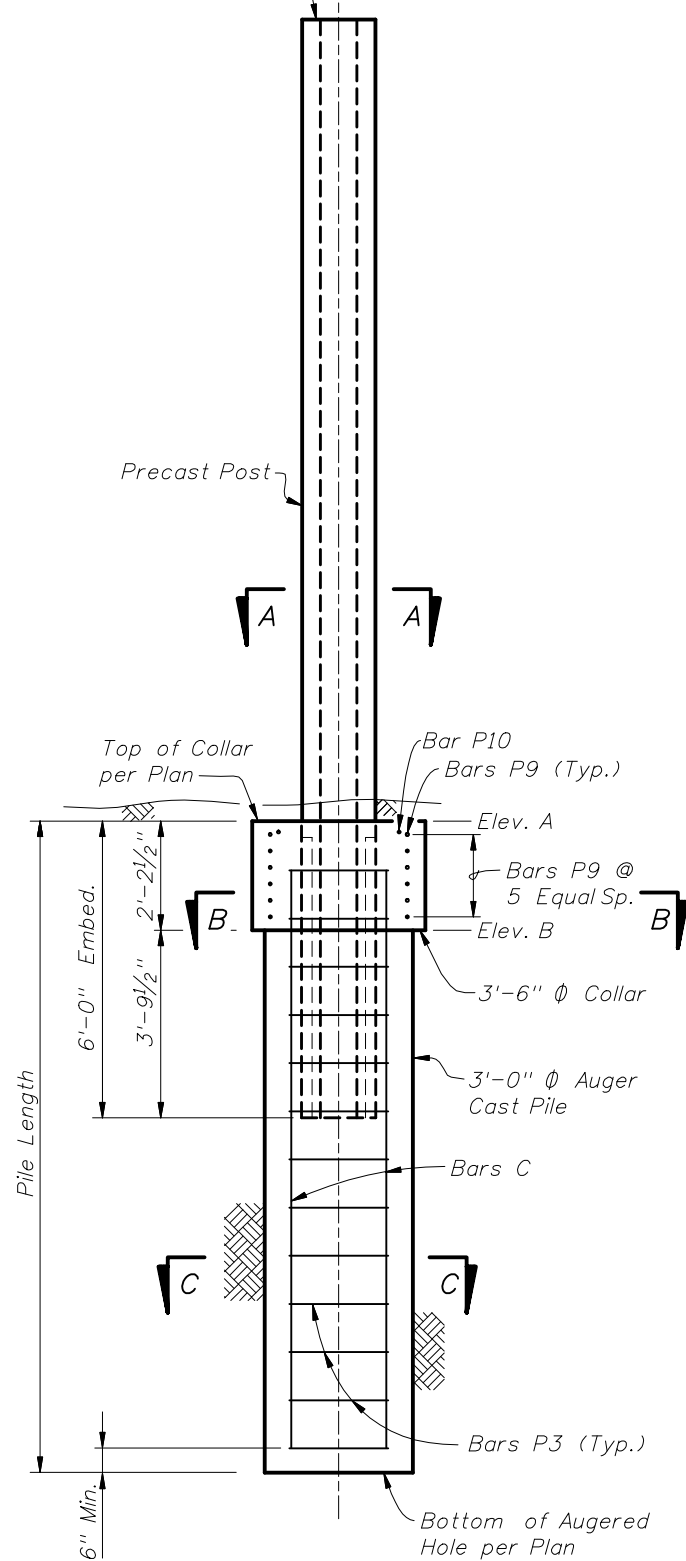
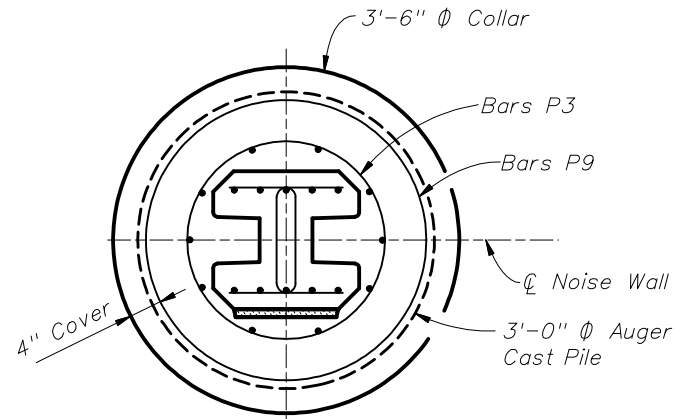


☉ Post, 3'-6" Ø Collar and 3'-0" Ø Auger Cast Pile
 * Top of wall per Plan

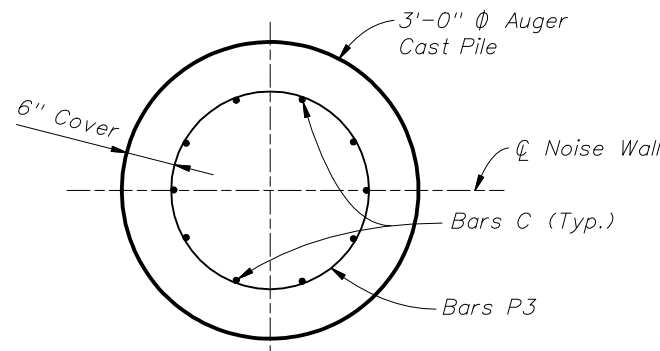
* Extend Post 2" above top of high side wall panel when post caps are shown in plans.



POST IN AUGERED HOLE
 (Cast-In-Place Collar Shown, Precast Collar Similar)

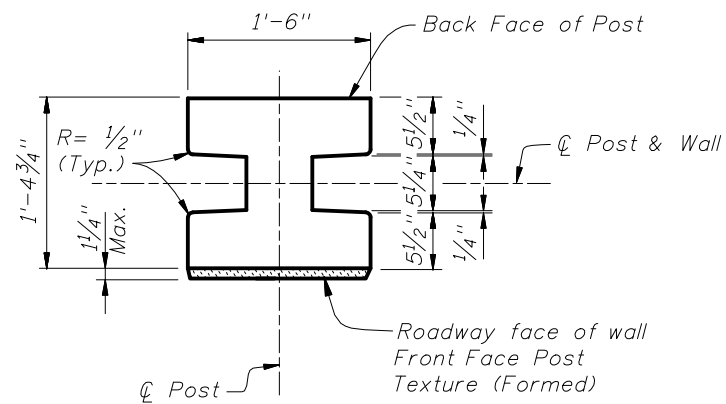


SECTION B-B

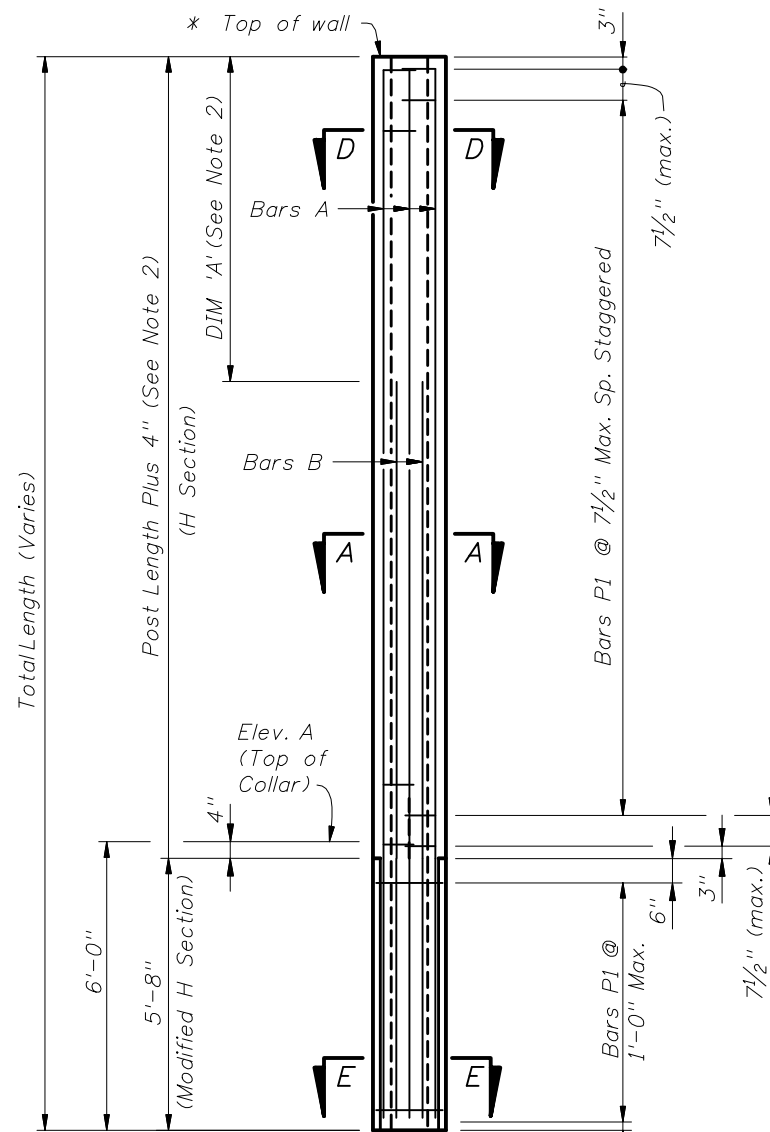


SECTION C-C

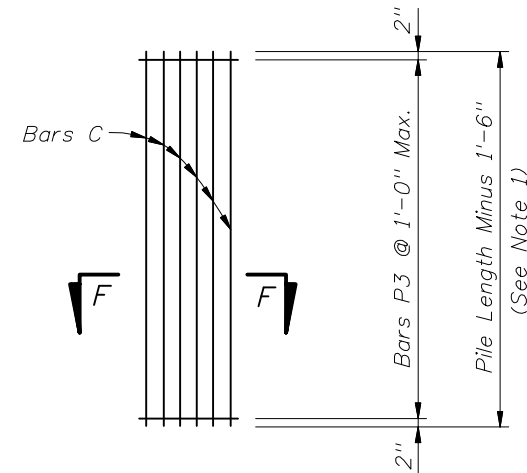
- NOTES:
1. For Post and Pile Lengths, see Index No. 5206.
 2. For Table of Reinforcing Steel Sizes and DIM 'A', see Index No. 5206.
 3. For Precast Collar Option, see Sheet 2.



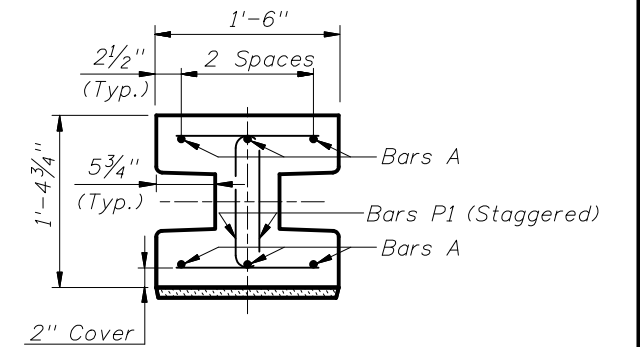
TYPICAL POST SECTION
 (H Section)



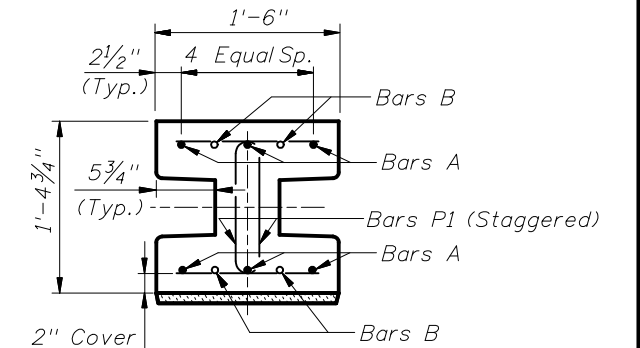
POST DETAIL WITH C-I-P COLLAR
 (Prior to placement in augered hole)



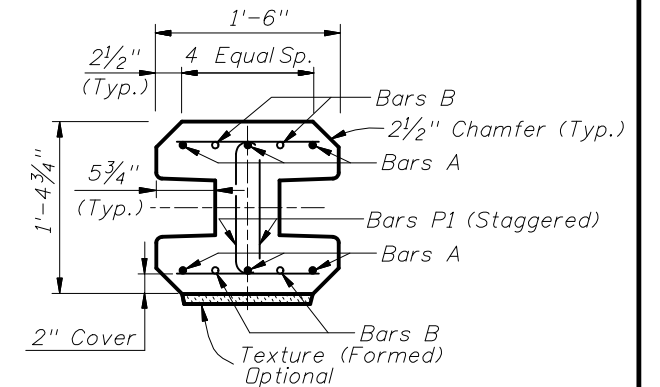
AUGERED PILE REINFORCEMENT DETAIL



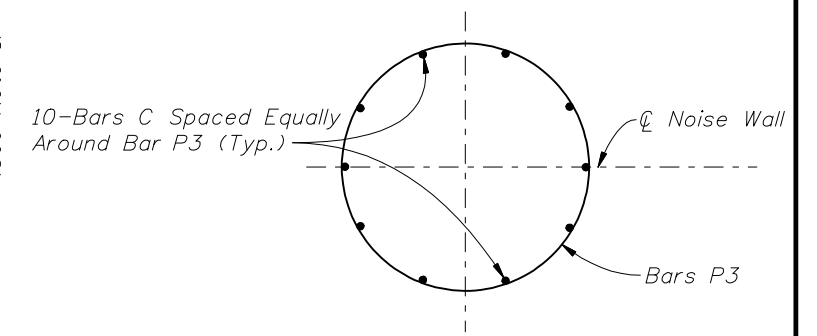
SECTION D-D
 (H Section)



SECTION A-A
 (H Section)



SECTION E-E
 (Modified H Section)



SECTION F-F

PILE/POST CONNECTION OPTION A

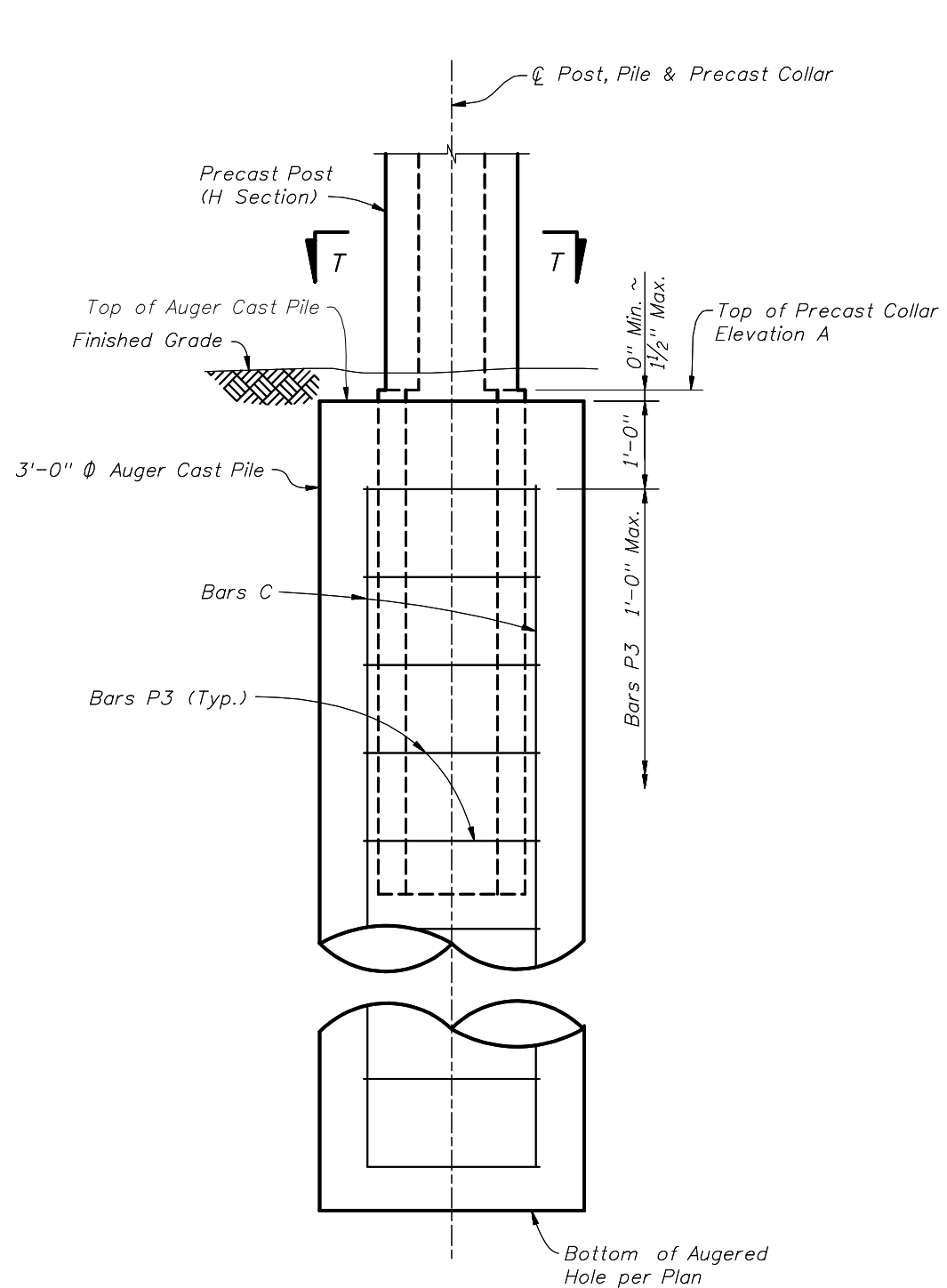


2010 FDOT Design Standards

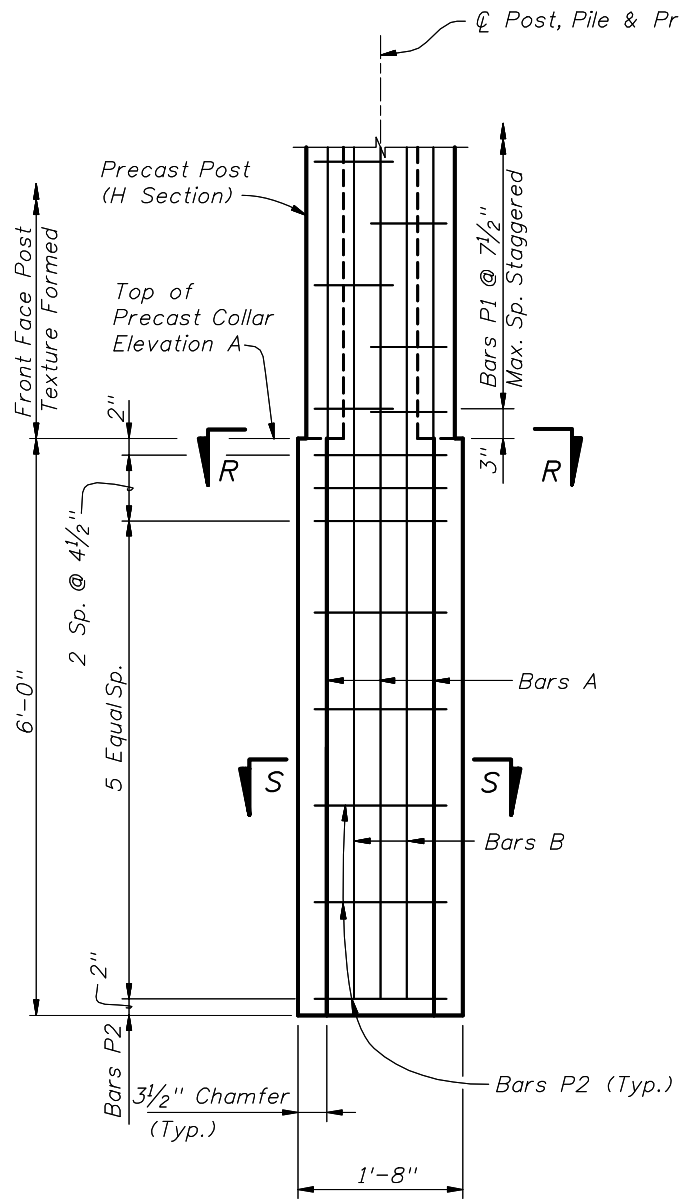
PRECAST SOUND BARRIERS -
 PILE AND POST REINFORCING STEEL

Last Revision 07/01/08
 Sheet No. 1 of 7

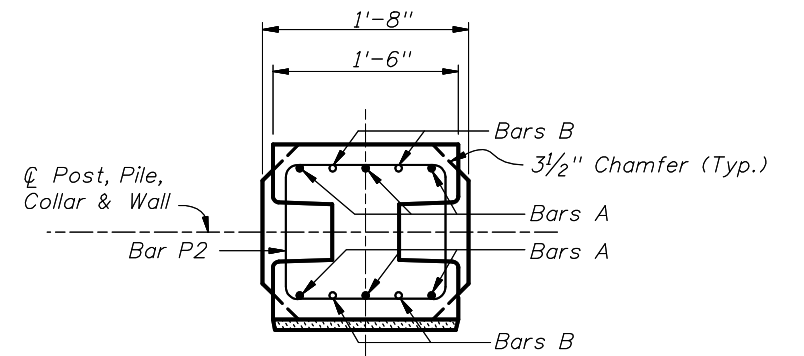
Index No. 5205



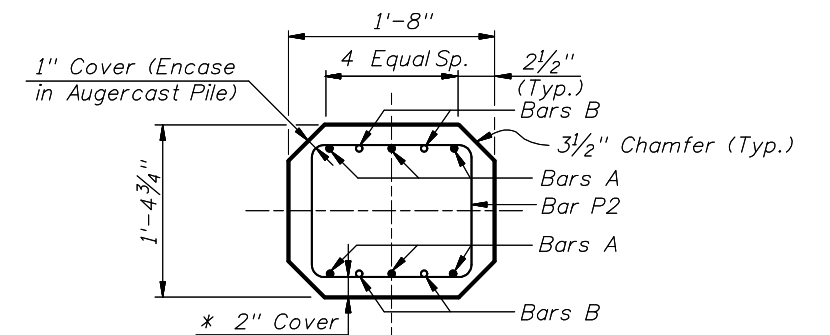
PRECAST COLLAR IN AUGER CAST PILE



PRECAST COLLAR DETAIL

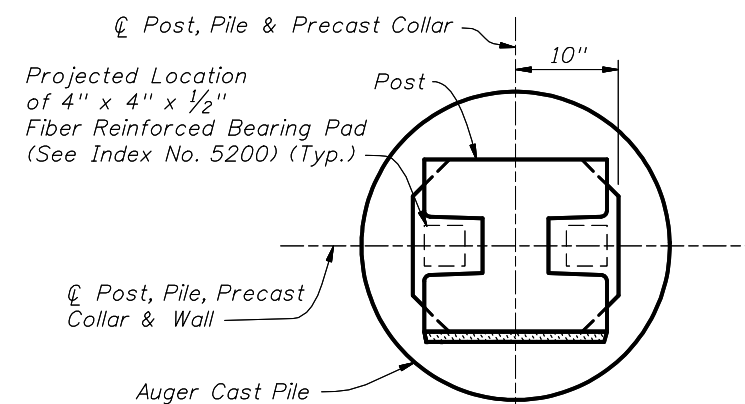


SECTION R-R



SECTION S-S

* - Unless Otherwise Noted.



SECTION T-T

NOTES:

1. For Post and Pile Lengths, see Index No. 5206.
2. For Reinforcing Steel Sizes, see Index No. 5206.
3. For Pile/Post Connection Option A, see Sheet No. 1 of 7.

PRECAST COLLAR FOR PILE/POST CONNECTION OPTION A



2010 FDOT Design Standards

PRECAST SOUND BARRIERS -
PILE AND POST REINFORCING STEEL

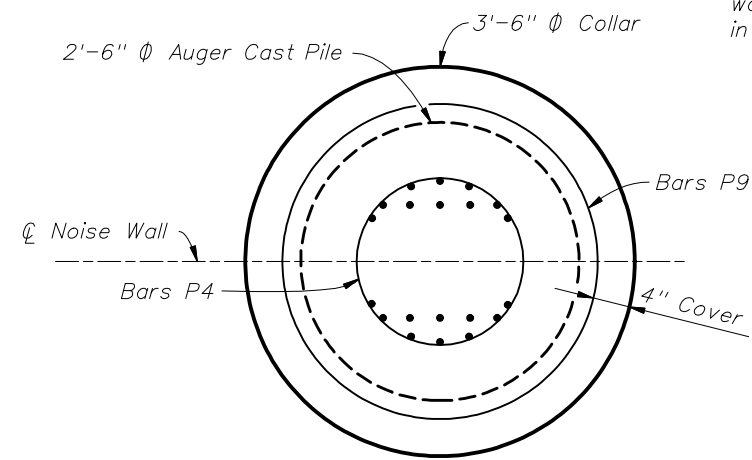
Last Revision 07/01/08

Sheet No. 2 of 7

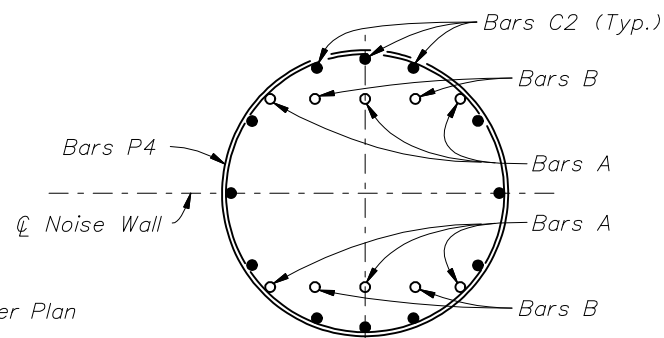
Index No. 5205

* Extend Post 2" above top of high side wall panel when post caps are shown in plans.

☉ Post, 3'-6" Ø Collar and 2'-6" Ø Auger Cast Pile
* Top of wall per Plan

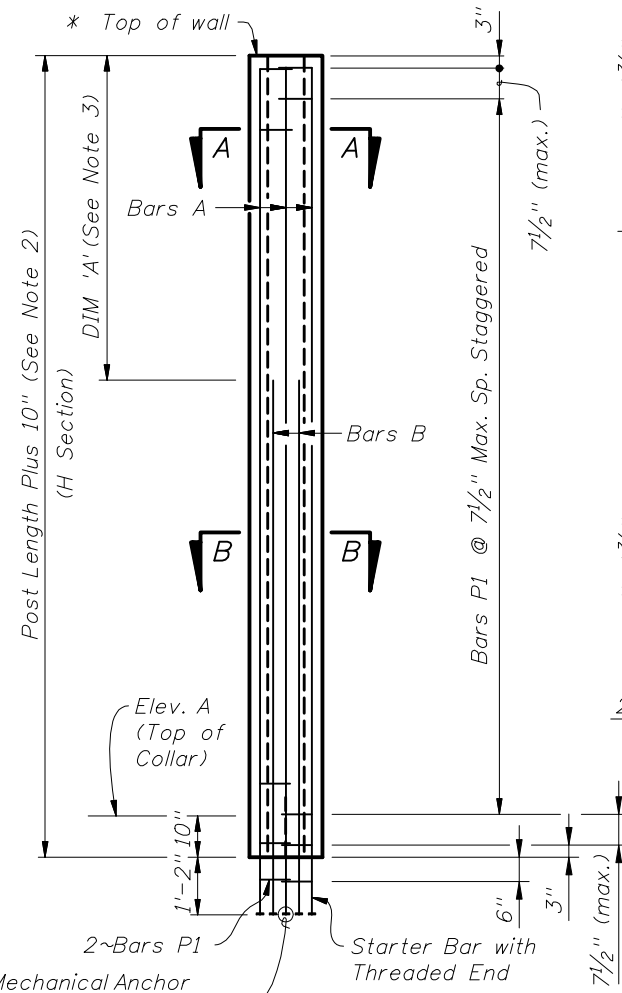


SECTION C-C

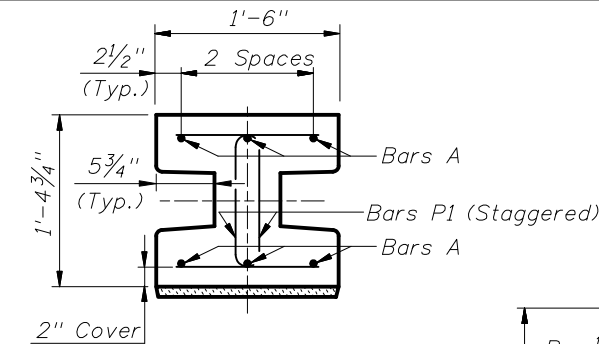


SECTION C-C (Showing Post & Pile Reinforcement)

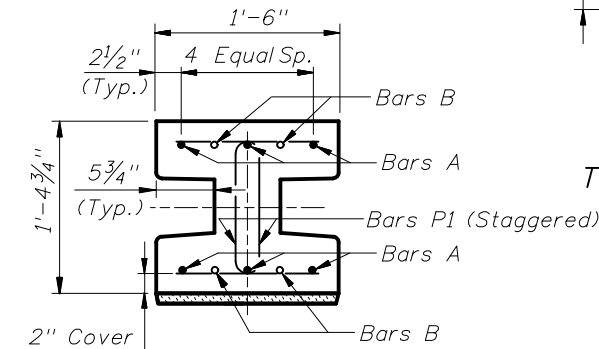
Legend:
○ Post Bars A or Bars B
● Pile Bars C2



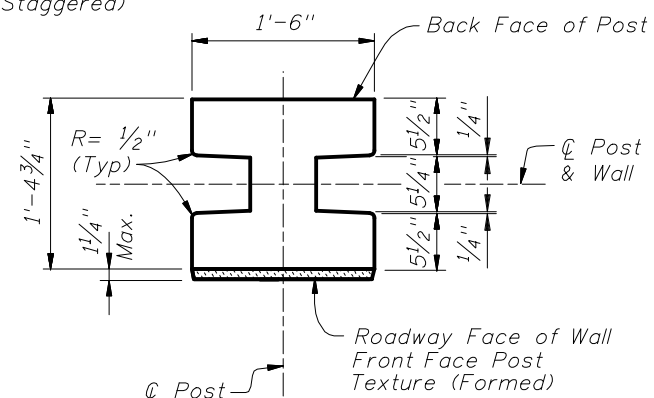
POST DETAIL



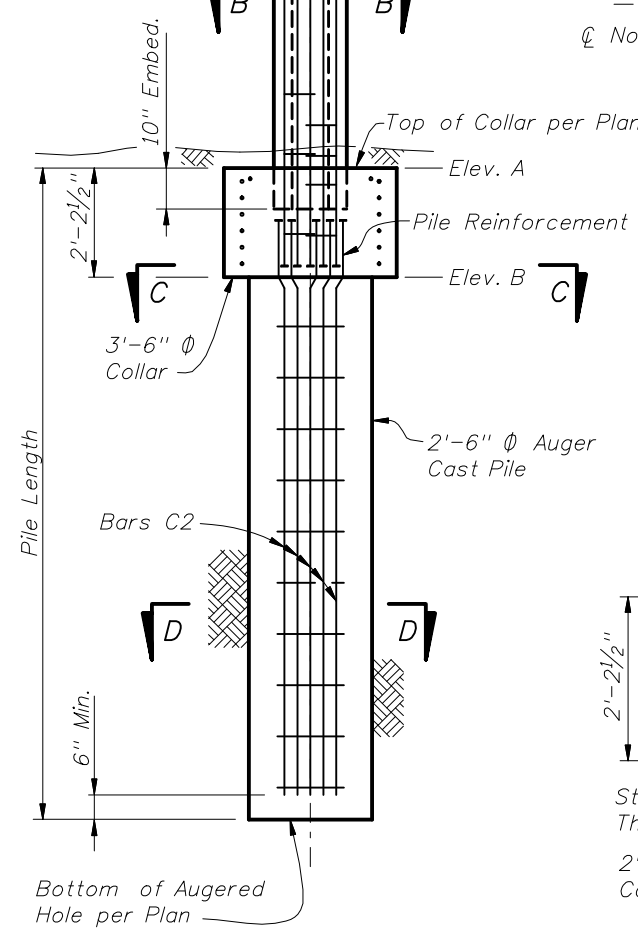
SECTION A-A (H Section)



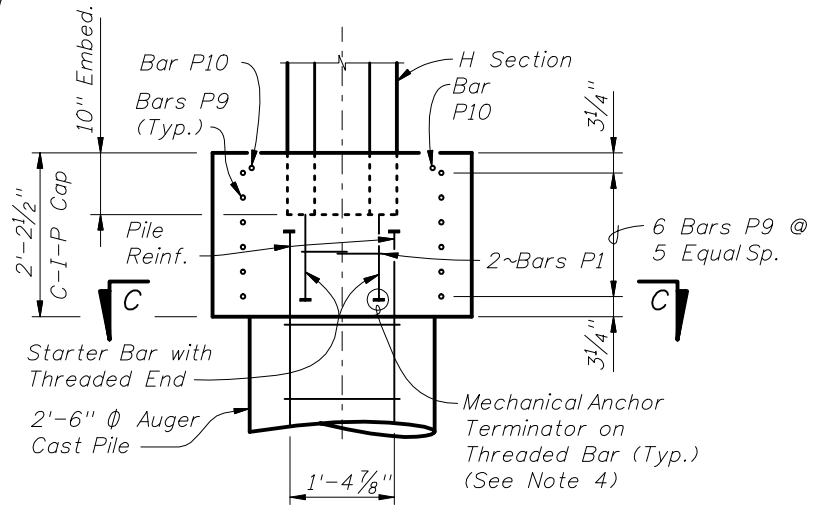
SECTION B-B (H Section)



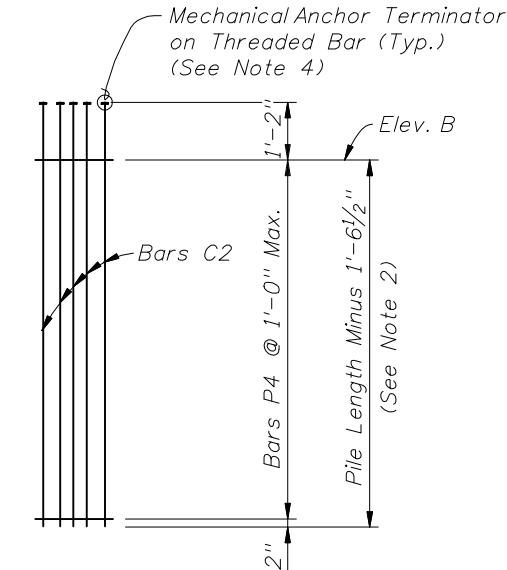
TYPICAL POST SECTION (H Section)



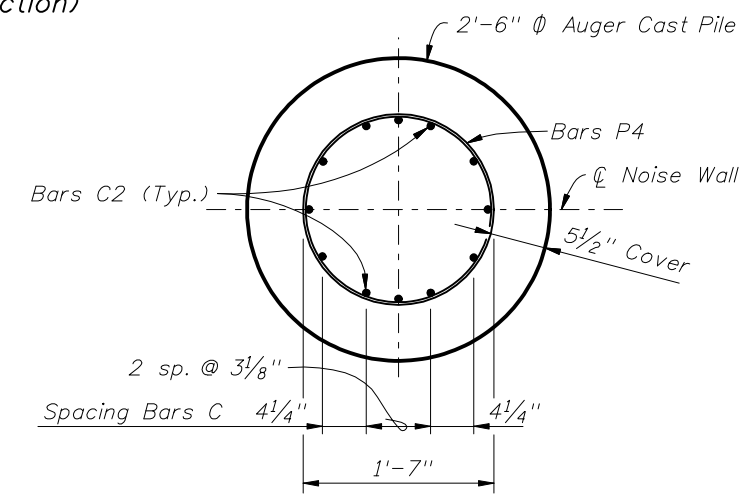
POST IN AUGERED HOLE



LAP AND COLLAR DETAIL (Looking Down the Wall)



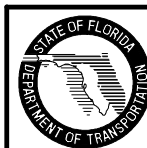
AUGERED PILE REINFORCEMENT DETAIL



Section D-D (Showing 2'-6" Auger Cast Pile)

- NOTES:
1. A precast collar shall not be permitted with this Pile/Post Connection Option.
 2. For Post and Pile Lengths, see Index No. 5206.
 3. For Table of Reinforcing Steel Sizes and DIM 'A', see Index No. 5206.
 4. Mechanical Anchor Terminators shall develop 125% of the specified yield strength of the bar.

PILE/POST CONNECTION OPTION B

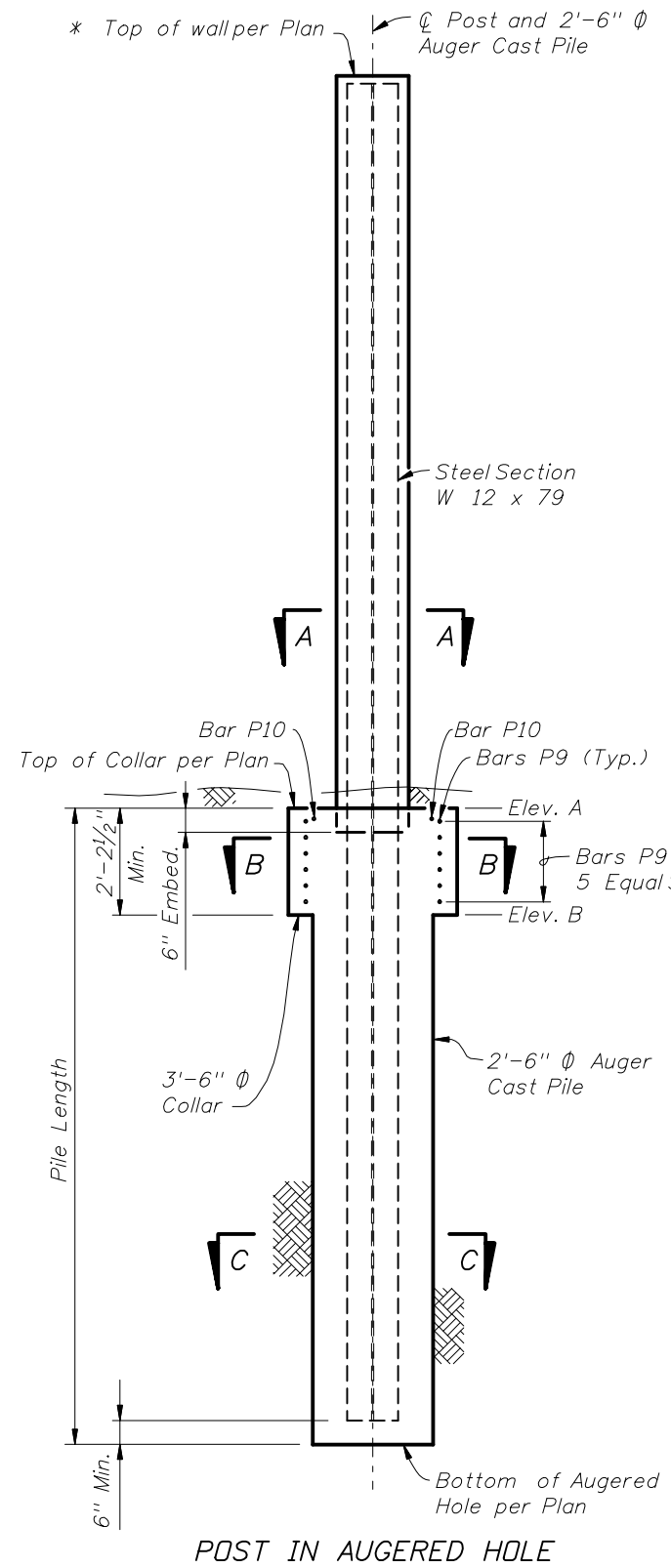


2010 FDOT Design Standards

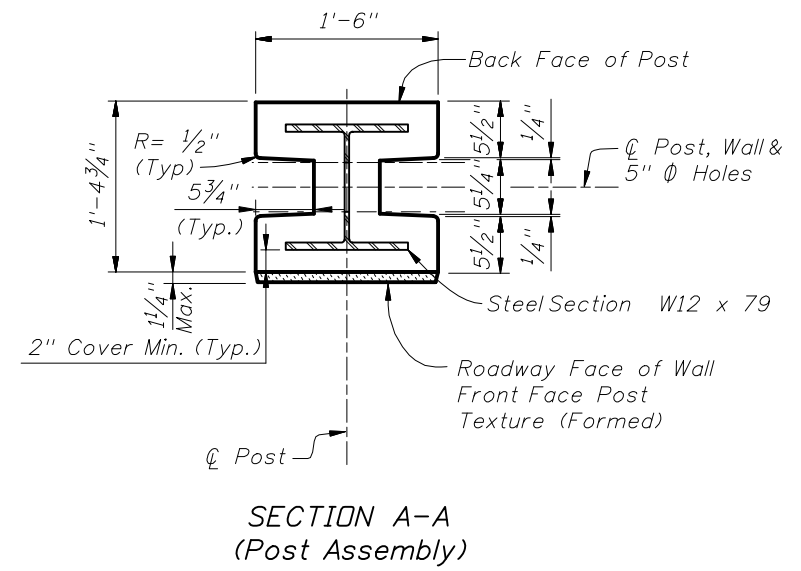
PRECAST SOUND BARRIERS -
PILE AND POST REINFORCING STEEL

Last Revision	Sheet No.
07/01/08	3 of 7
Index No.	
5205	

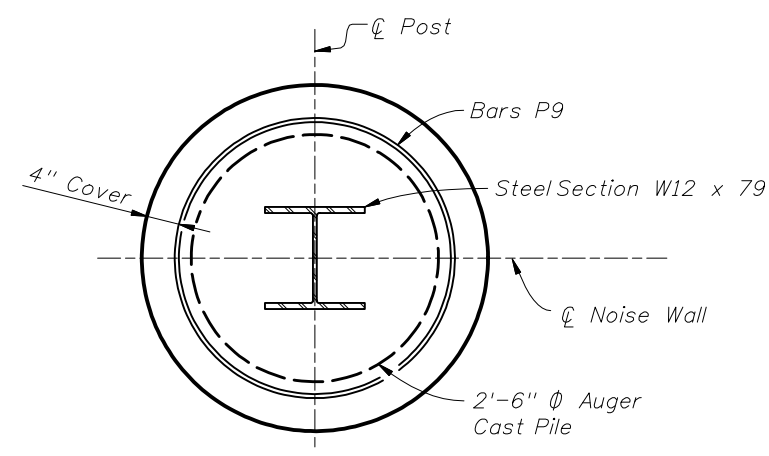
* Extend Post 2" above top of high side wall panel when post caps are shown in plans.



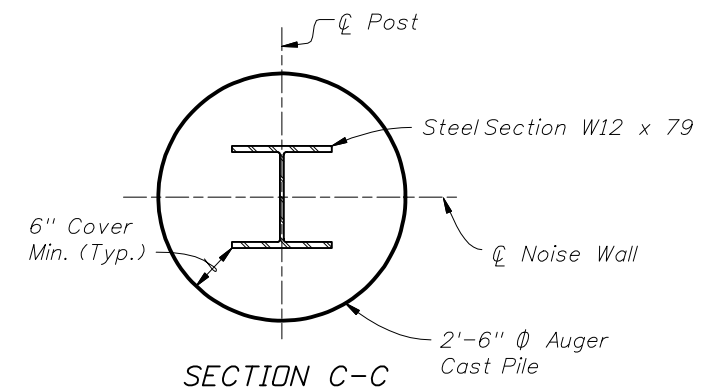
POST IN AUGERED HOLE



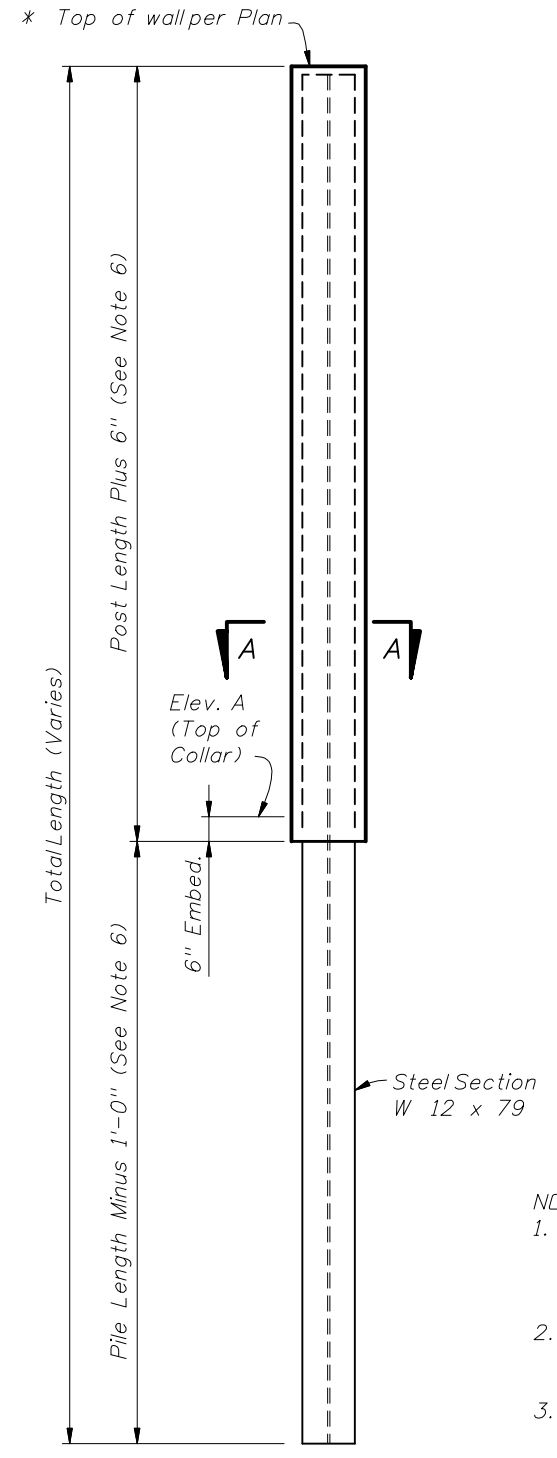
SECTION A-A (Post Assembly)



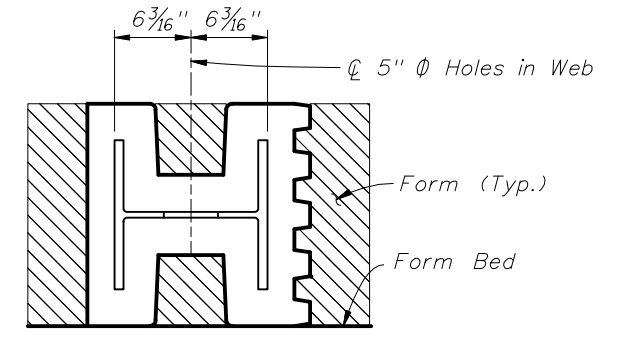
SECTION B-B



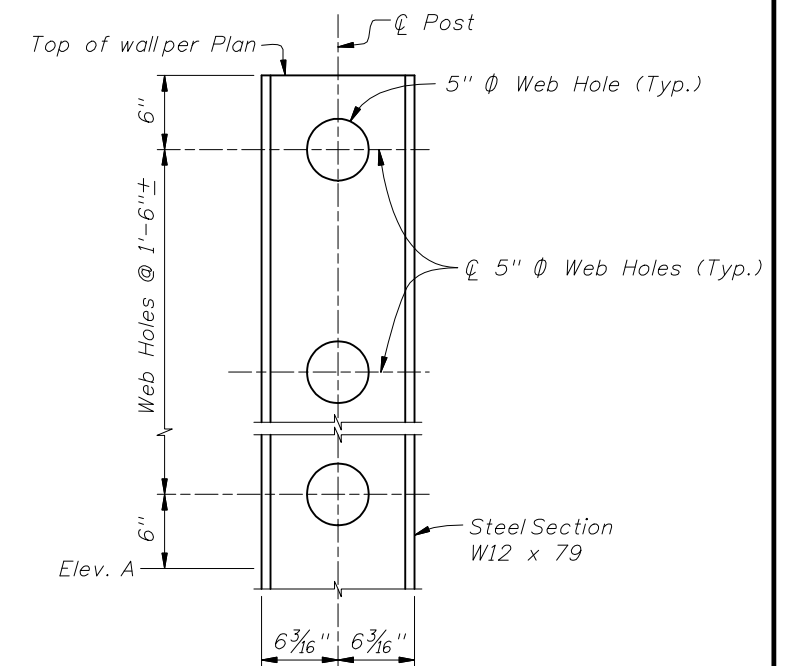
SECTION C-C



POST ASSEMBLY DETAIL



HORIZONTAL CASTING ORIENTATION (Front Face Post Texture Type "H" Shown)

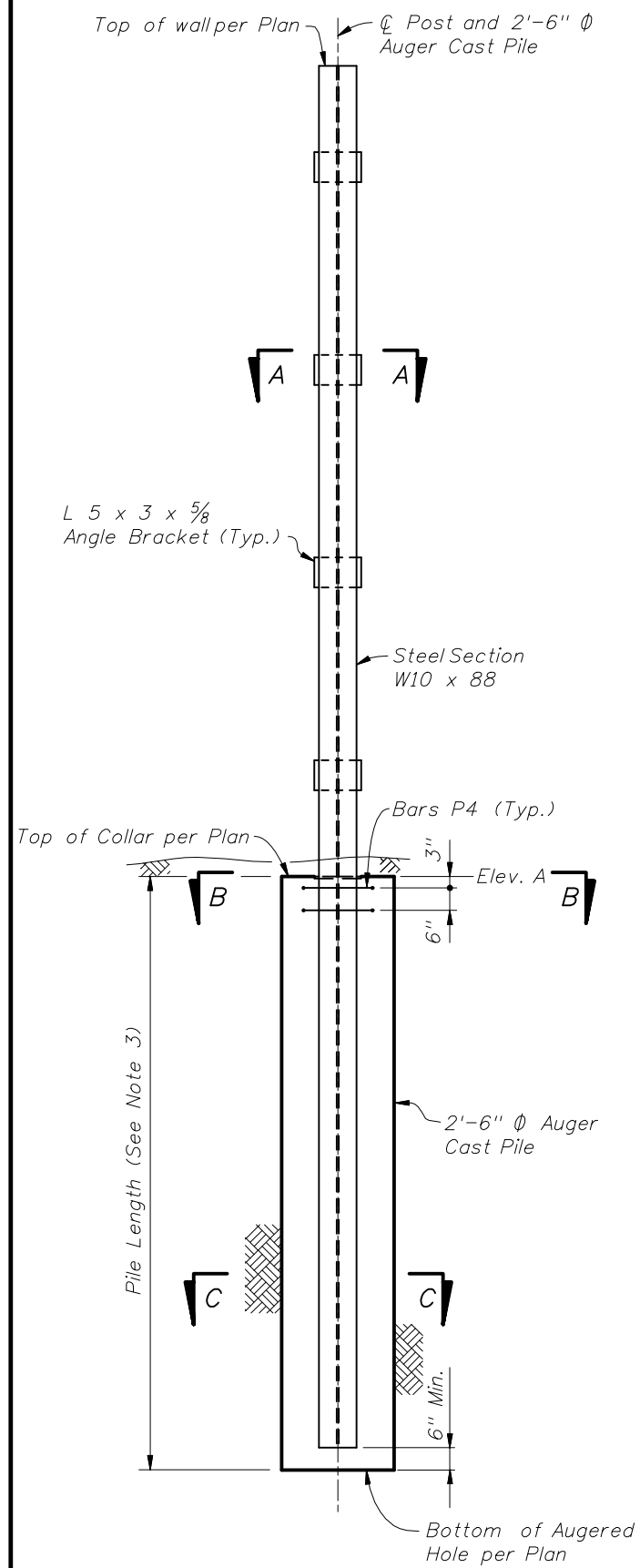


WEB HOLE SPACING DETAIL

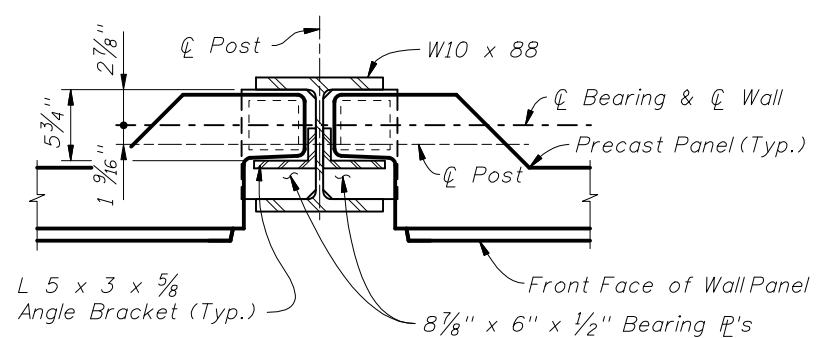
- NOTES:
1. The W12 x 79 load carrying member is coated with concrete for durability, aesthetic reasons and to make the connection to the panels.
 2. The steel and concrete post assembly is not a reinforced concrete design.
 3. The steel and concrete post assembly shall be cast vertical or cast horizontal according to the casting orientation shown above.
 4. All Structural Steel shall be in accordance with ASTM A 36.
 5. A precast collar shall not be permitted with this Pile/Post Connection Option.
 6. For Post and Pile Lengths, see Index No. 5206.

PILE/POST CONNECTION OPTION C

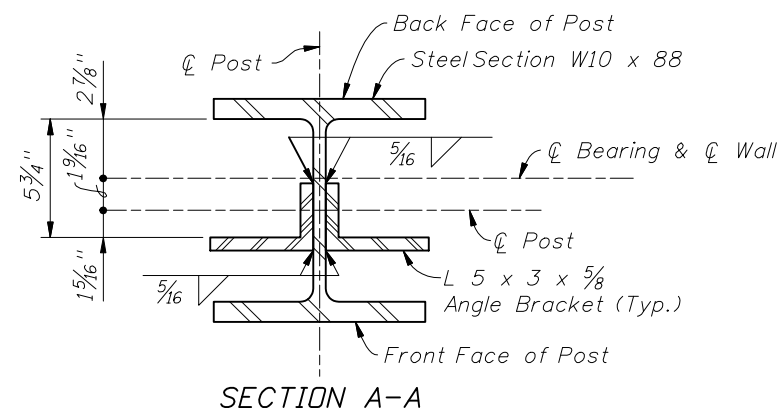




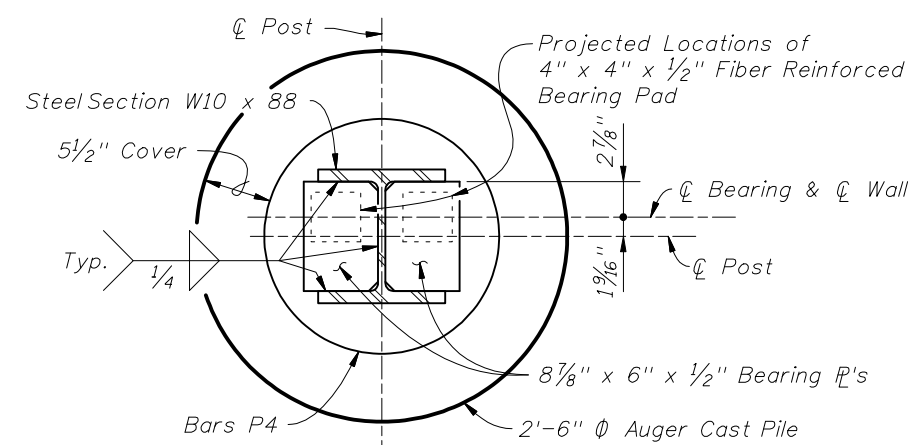
POST IN AUGERED HOLE



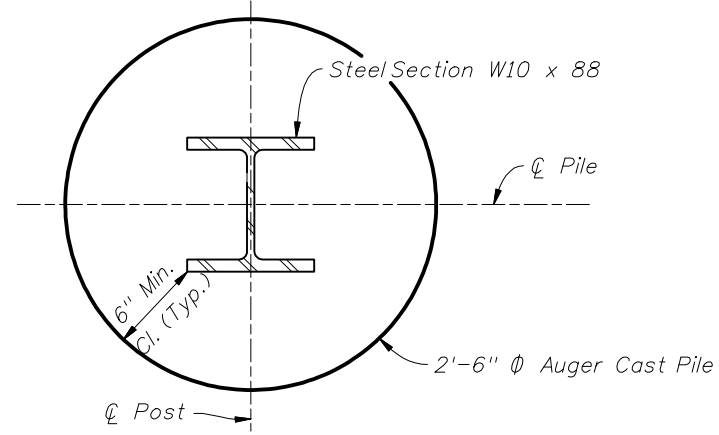
PLAN VIEW AT TOP WALL
(Flush Panel Option Shown)



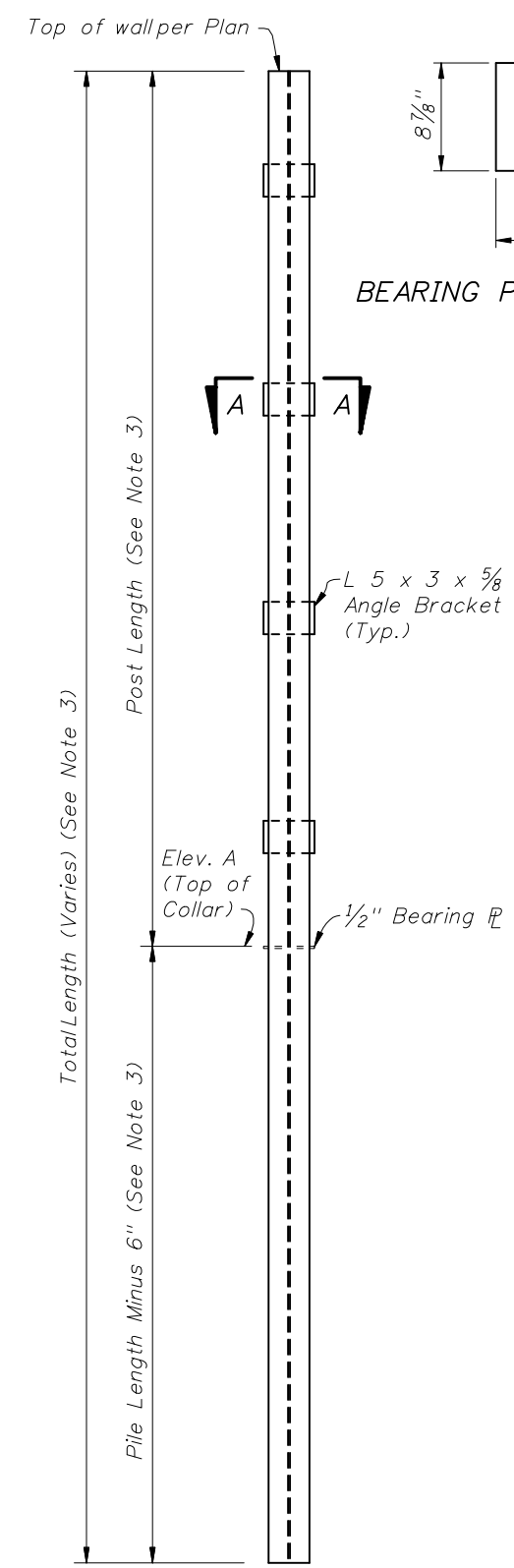
SECTION A-A



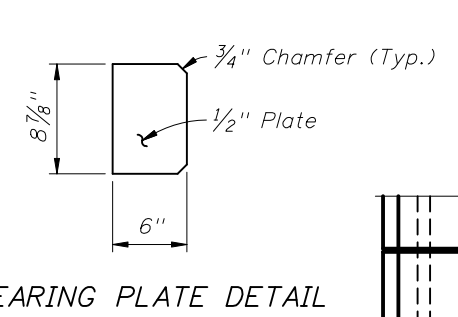
SECTION B-B



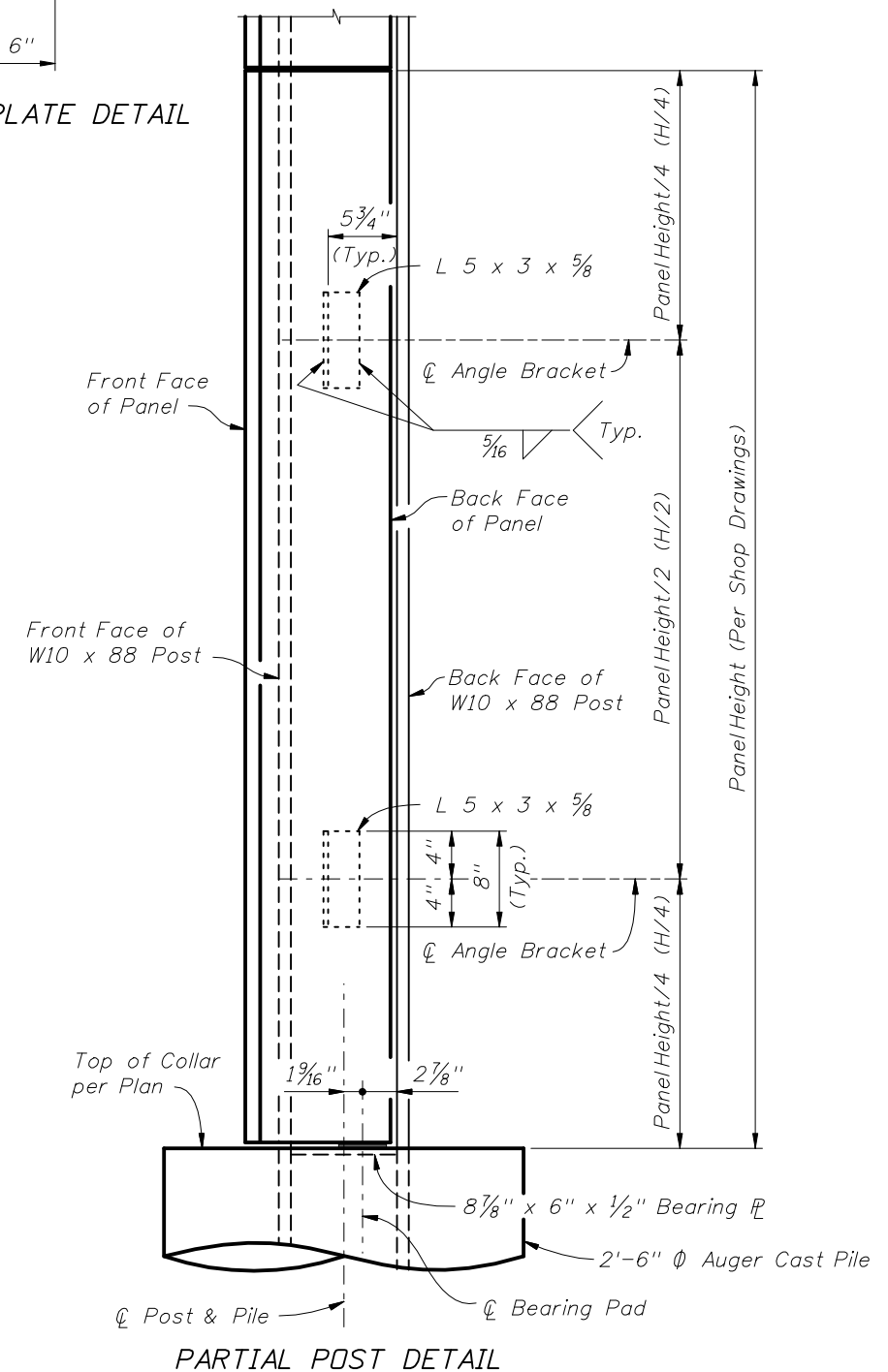
SECTION C-C



W10 X 88 POST DETAIL



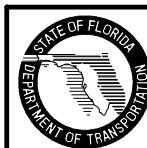
BEARING PLATE DETAIL



PARTIAL POST DETAIL

- NOTES:
- All Structural Steel shall be in accordance with ASTM A 36.
 - For this Pile/Post Connection Option the Wall Panel Length increased by 8" to 9'-10" and 19'-10" respectively for the 10'-0" and 20'-0" post spacing.
 - For Post and Pile Lengths, see Index No. 5206.

PILE/POST CONNECTION OPTION D



Ø Post, 3'-6" Ø Collar and
2'-6" Ø Auger Cast Pile

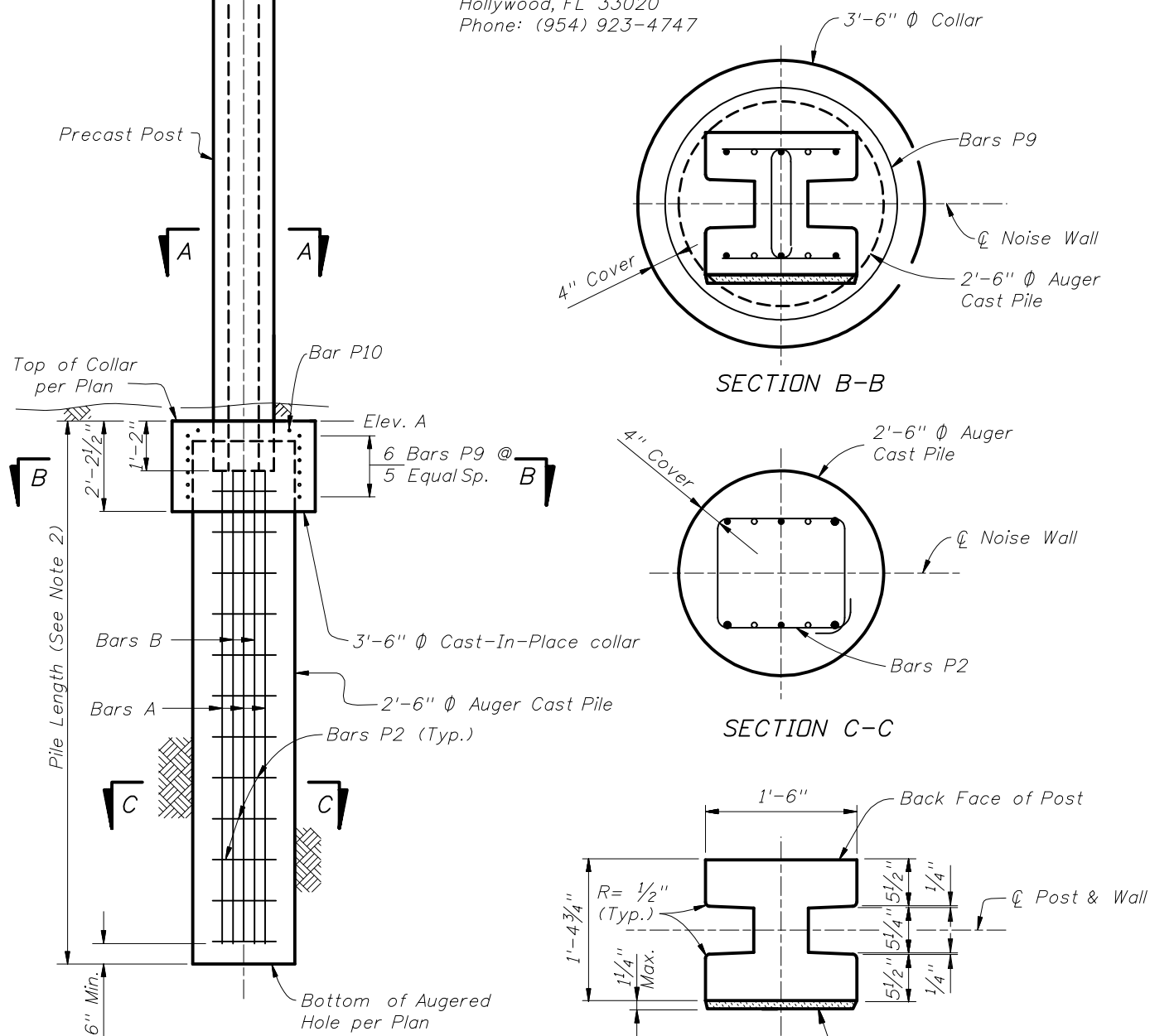
* Top of wall per Plan

NOTES:

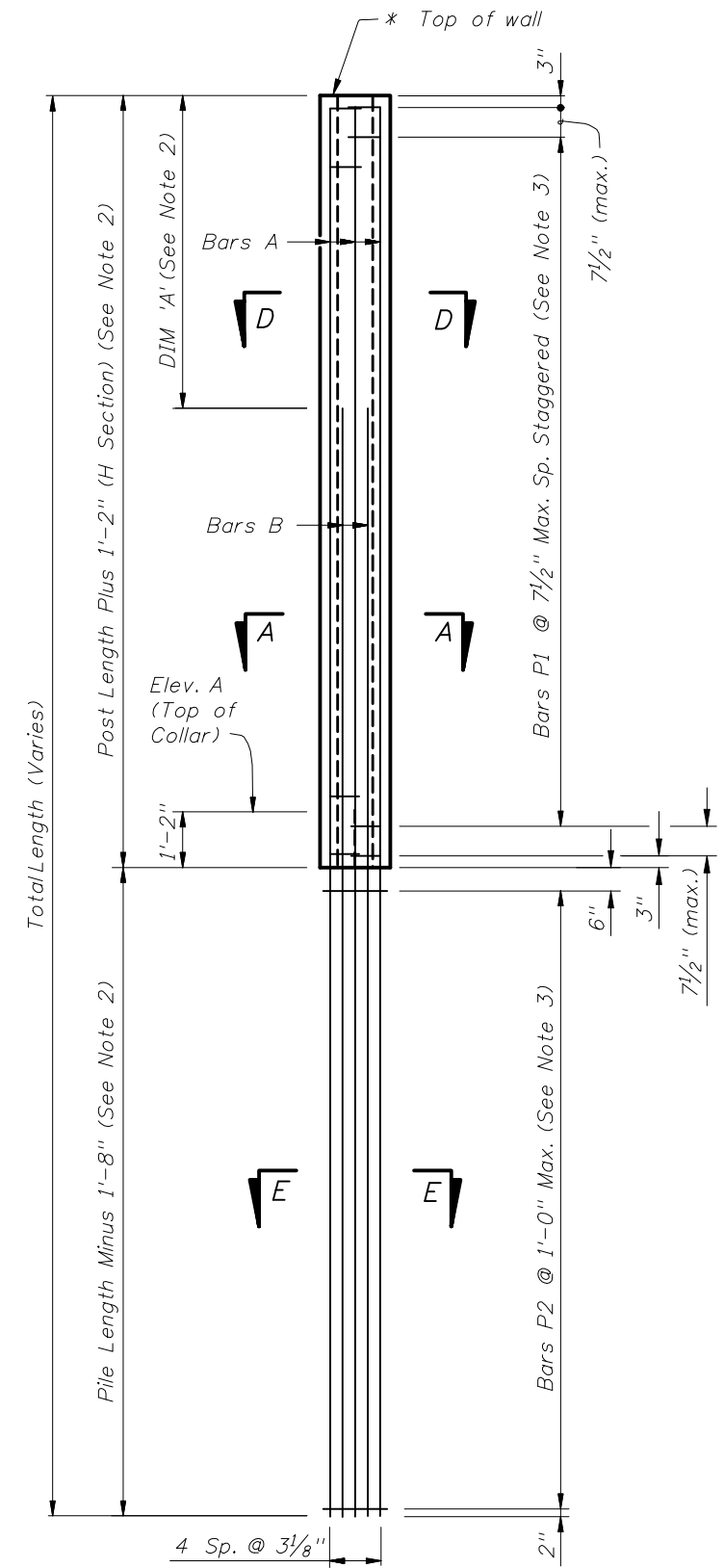
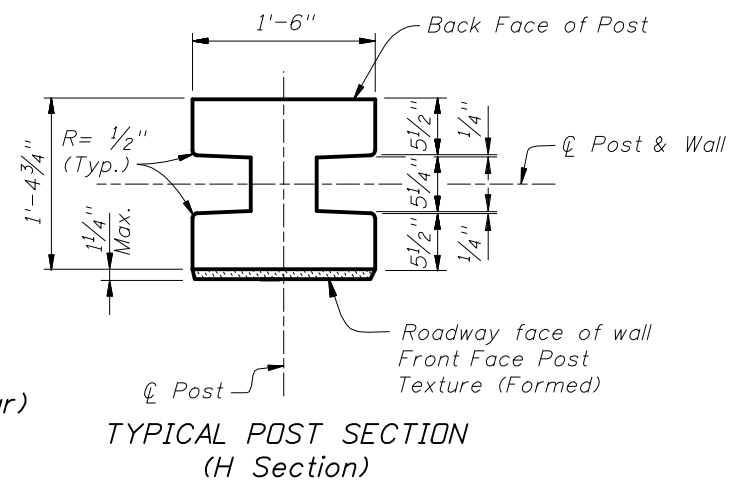
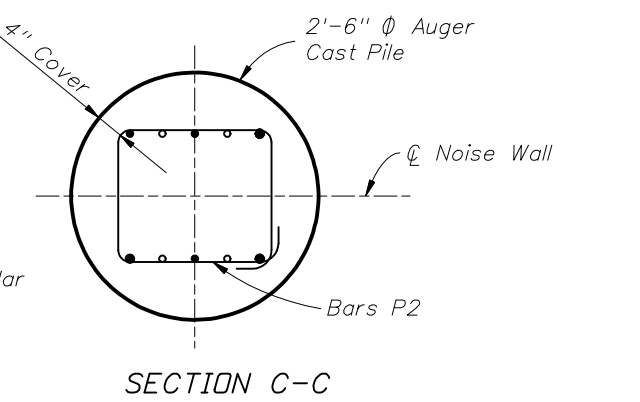
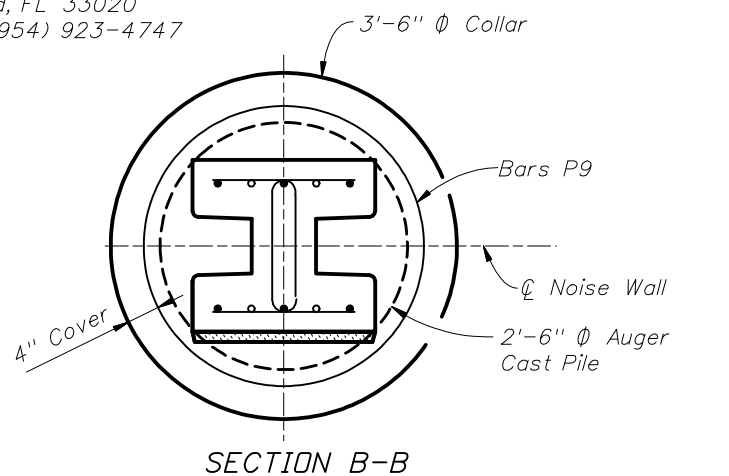
1. The construction of this option utilizes a patented process covered by patents held by State Contracting and Engineering Inc. Any use of this design is subject to the rights of the patent holder (U.S. Patent Nos. 5,234,288 & 5,429,455) and all patent royalties or license fees shall be the sole responsibility of the user.
2. For Post and Pile Lengths, see Index No. 5206.
3. For Table of Reinforcing Steel Sizes and DIM 'A', see Index No. 5206.
4. For Precast Collar Option, see Sheet No. 7 of 7.

To use this design contact:
State Contracting and Engineering, Corp.
3800 North 29th Avenue
Hollywood, FL 33020
Phone: (954) 923-4747

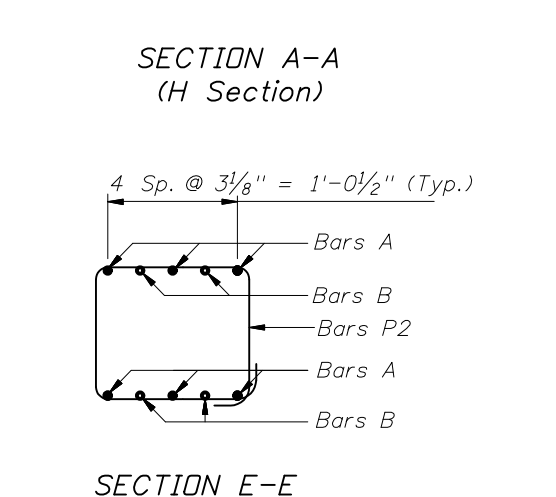
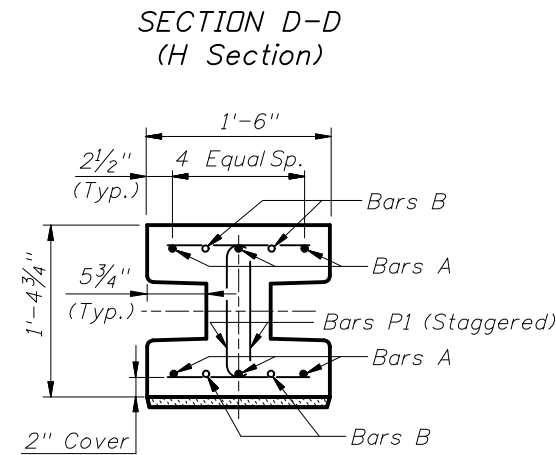
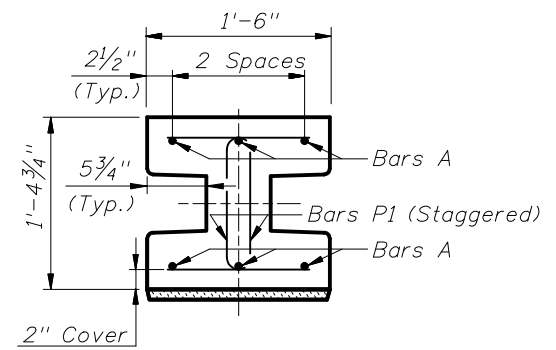
* Extend Post 2" above top of high side wall panel when post caps are shown in plans.



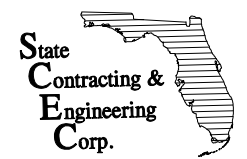
POST IN AUGERED HOLE
(Cast-In-Place Collar Shown, Precast Collar Similar)



GROUND MOUNTED POST REINFORCEMENT
(Prior to placement in augered hole)



KEITH and SCHNARS, P.A.
ENGINEERS - PLANNERS - SURVEYORS
6500 NORTH ANDREWS AVENUE
FORT LAUDERDALE, FL 33309-2132
CERTIFICATE OF AUTHORIZATION NO. 1337

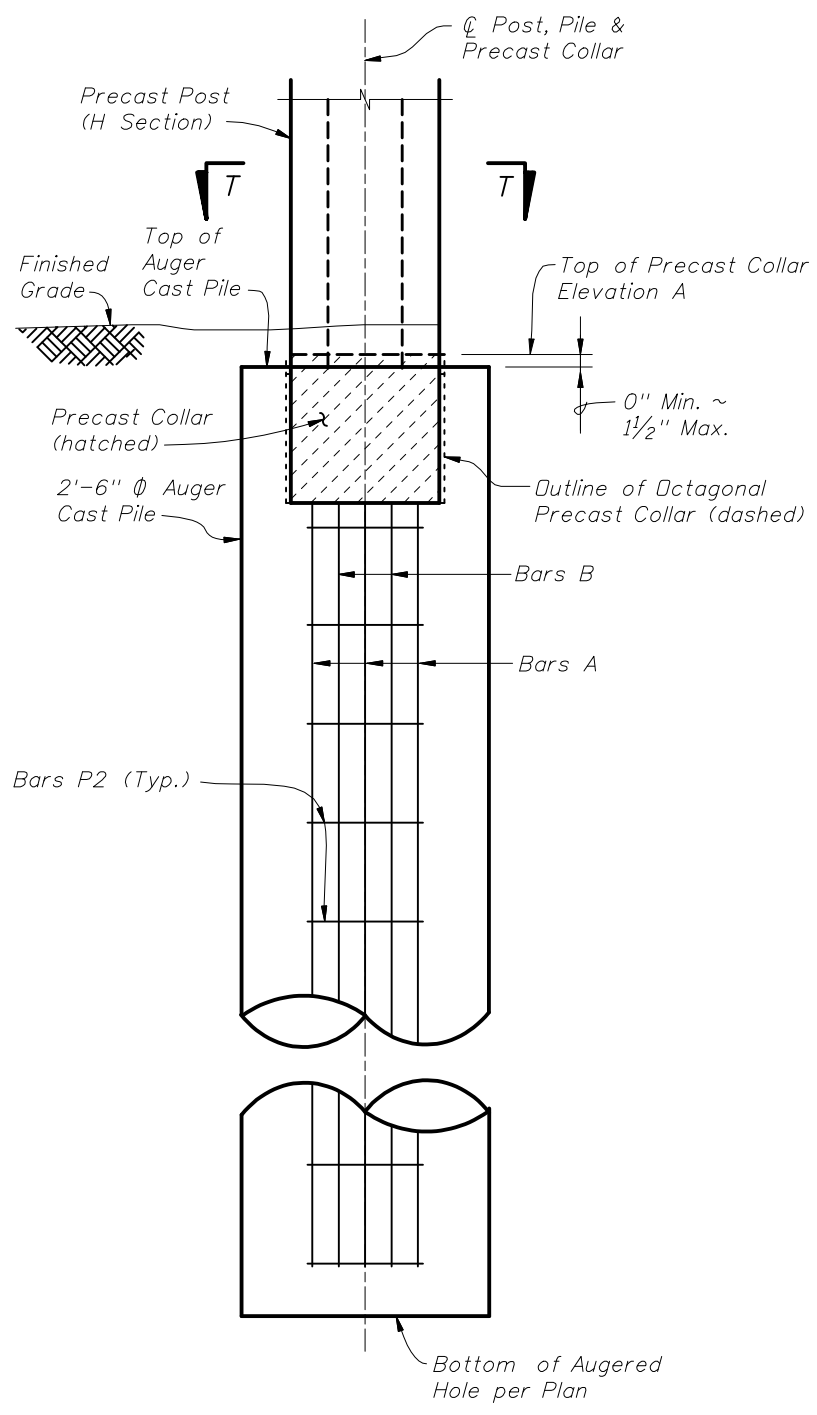


STATE CONTRACTING & ENGINEERING CORP.
PILE/POST CONNECTION OPTION E

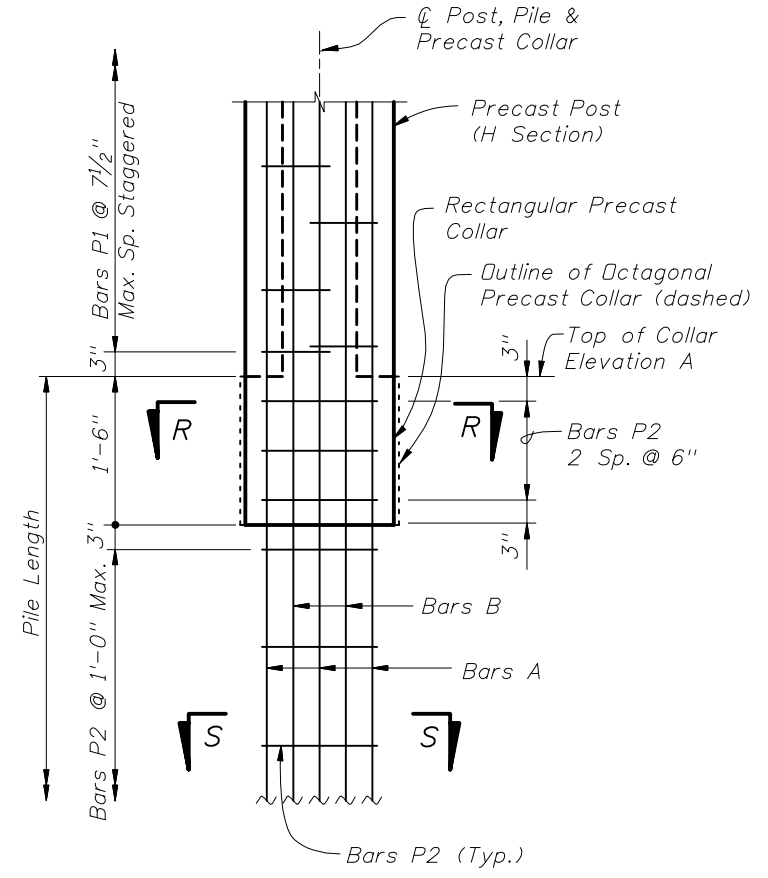


2010 FDOT Design Standards
**PRECAST SOUND BARRIERS -
PILE AND POST REINFORCING STEEL**

Last Revision	Sheet No.
07/01/08	6 of 7
Index No.	
5205	

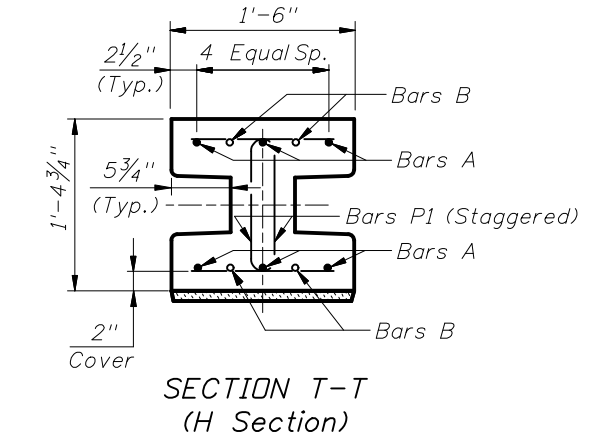


PRECAST COLLAR IN AUGER CAST PILE

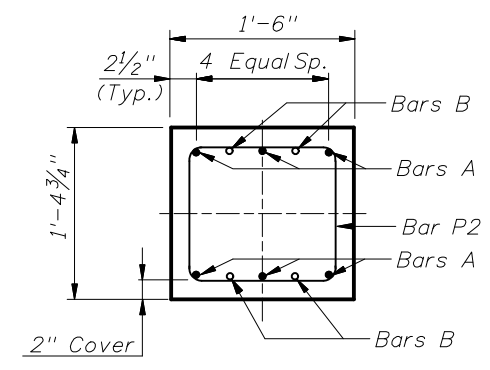


PRECAST COLLAR DETAIL

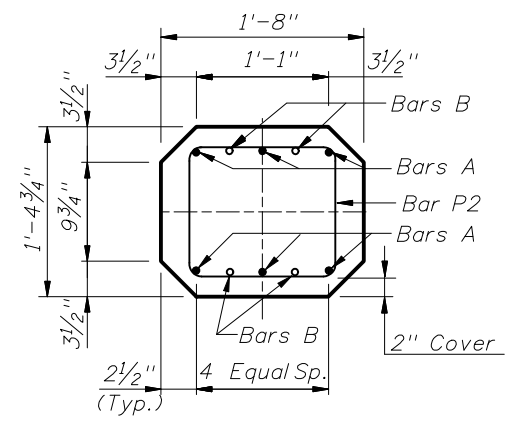
- NOTES:
1. For Post and Pile Lengths, see Index No. 5206.
 2. For Reinforcing Steel Sizes, see Index No. 5206.
 3. For Pile/Post Connection Option E, see Sheet No. 6 of 7.



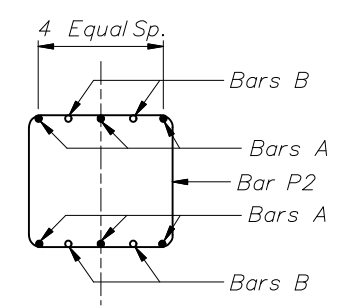
SECTION T-T (H Section)



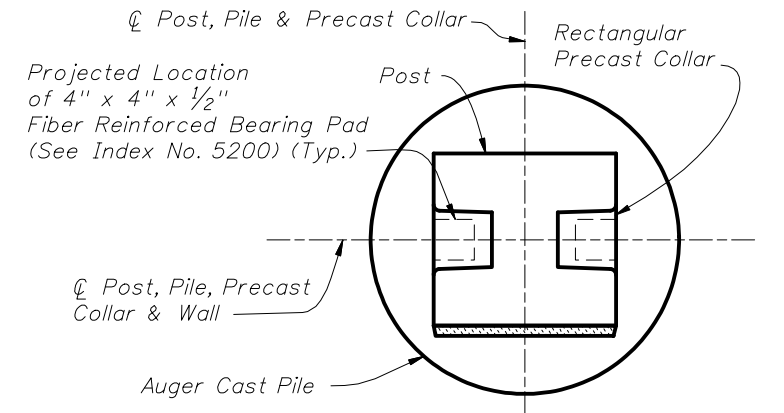
SECTION R-R (Rectangular Precast Collar)



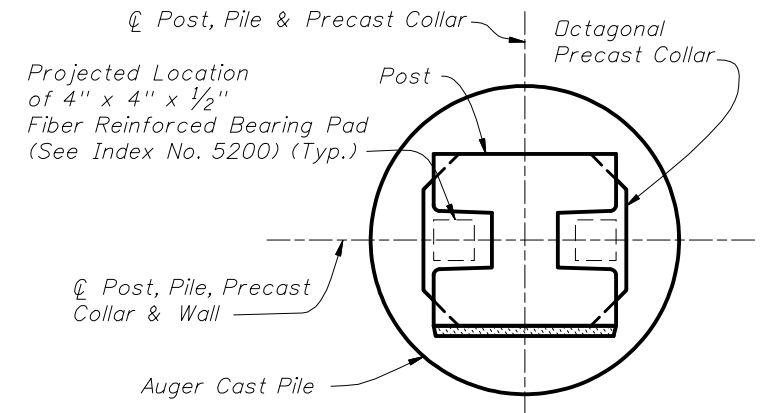
SECTION R-R (Octagonal Precast Collar)



SECTION S-S



SECTION T-T (Showing Rectangular Precast Collar and Auger Cast Pile)

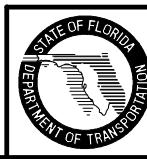


SECTION T-T (Showing Octagonal Precast Collar and Auger Cast Pile)

KEITH and SCHNARS, P.A.
ENGINEERS - PLANNERS - SURVEYORS
6500 NORTH ANDREWS AVENUE
FORT LAUDERDALE, FL 33309-2132
CERTIFICATE OF AUTHORIZATION NO. 1337



STATE CONTRACTING & ENGINEERING CORP.
PRECAST COLLAR FOR PILE/POST CONNECTION OPTION E



2010 FDOT Design Standards

**PRECAST SOUND BARRIERS -
PILE AND POST REINFORCING STEEL**

Last Revision	Sheet No.
07/01/08	7 of 7
Index No.	
5205	