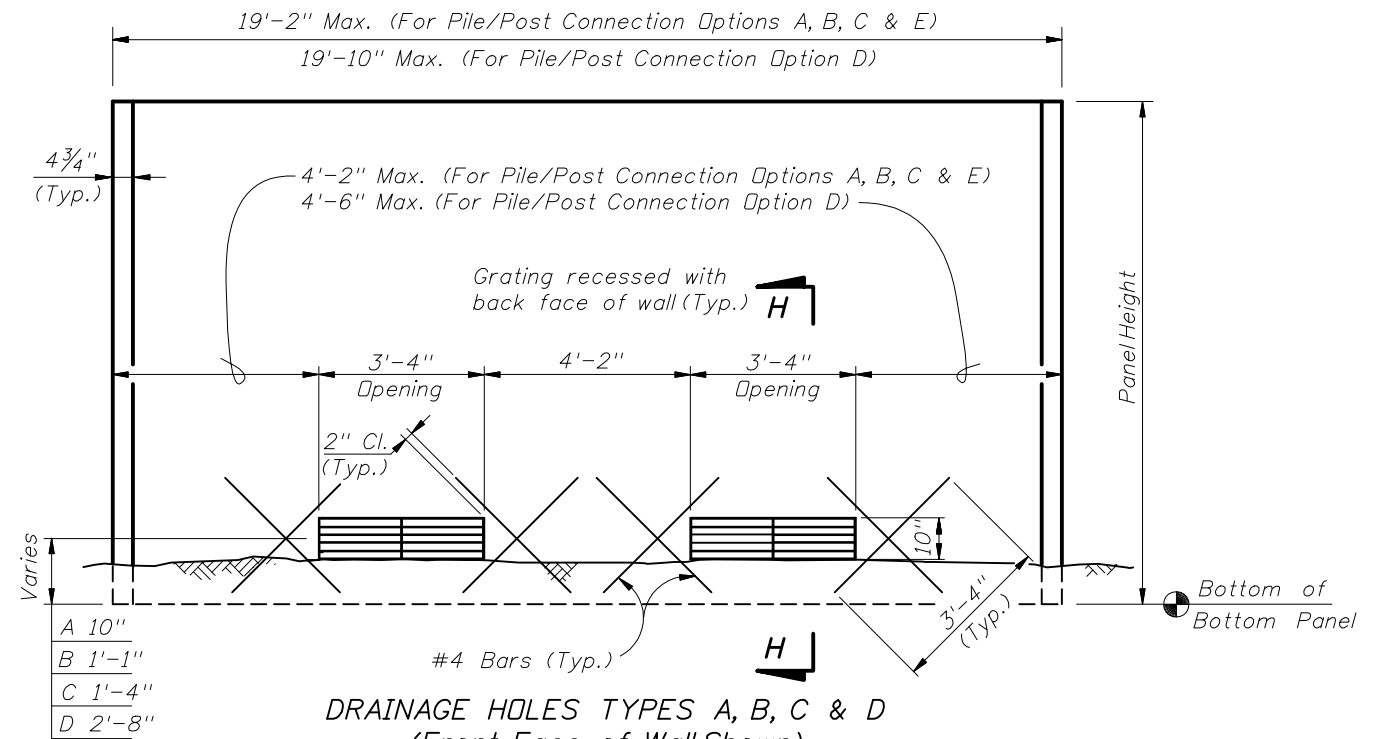


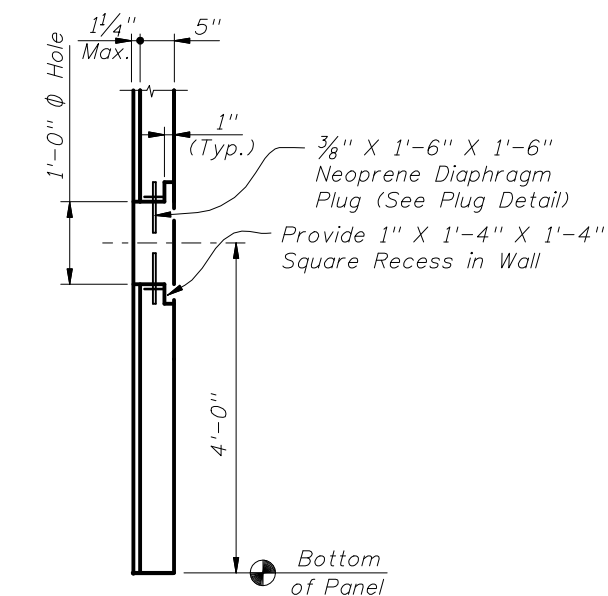
**FIRE HOSE ACCESS HOLE TYPICAL DETAIL**  
(Front Face of Wall Shown)  
(Flush Panel Option Shown  
Recessed Panel Option Similar)

NOTE: Fire Hose Access Point to be located at or near fire hydrants

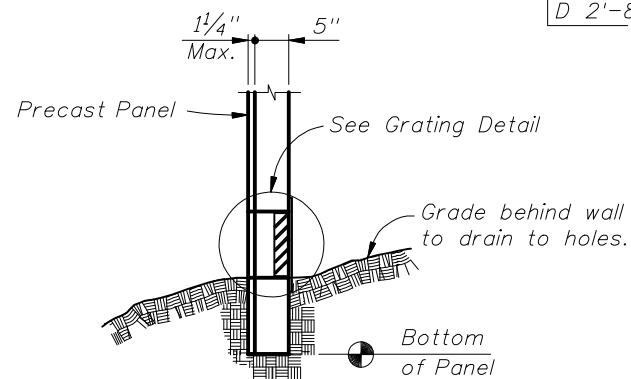


**DRAINAGE HOLES TYPES A, B, C & D**  
(Front Face of Wall Shown)  
(Flush Panel Option Shown  
Recessed Panel Option Similar)

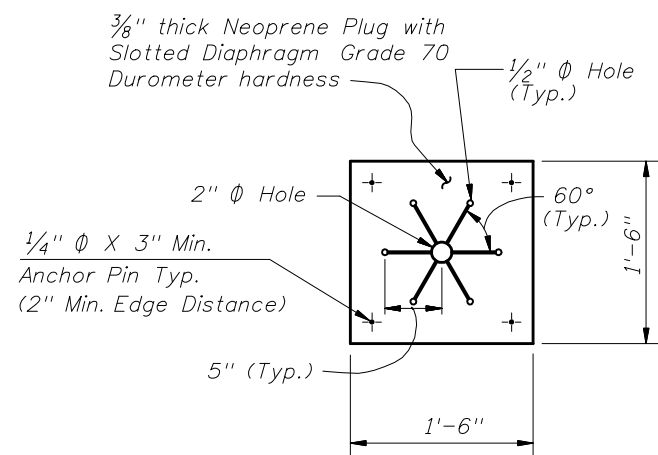
NOTE: Place double mat of welded wire reinforcement in bottom 5'-0" of panels with drainage holes. Hole Types A, B, C and D refer to distance from bottom of panel to center of opening. See Wall Control Drawings.



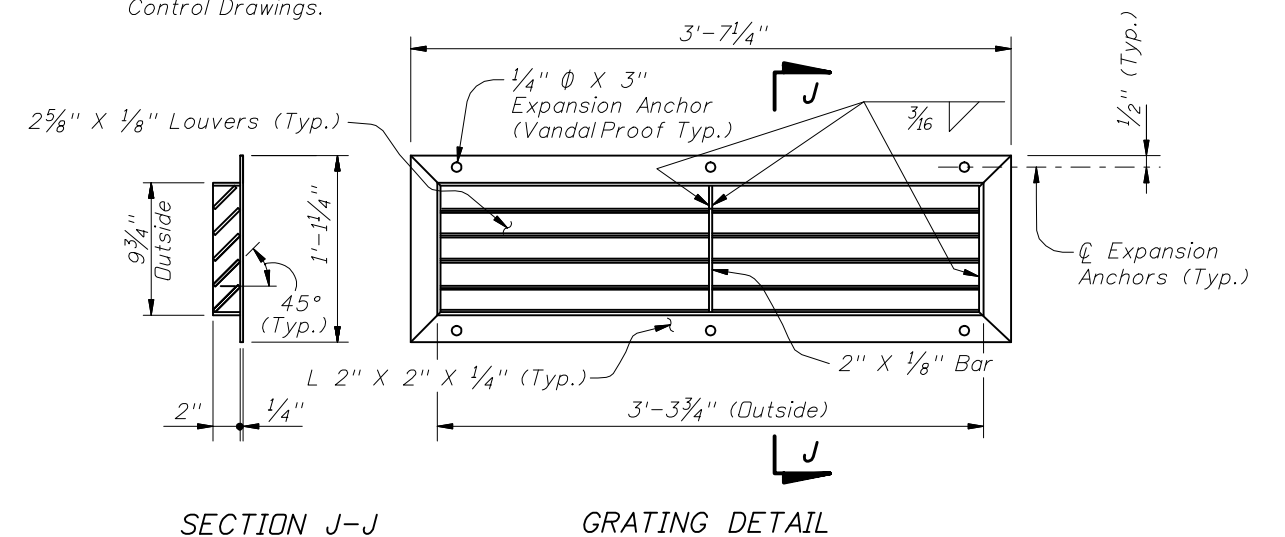
**SECTION G-G**  
(Flush Panel Option Shown  
Recessed Panel Option Similar)



**SECTION H-H**  
(Flush Panel Option Shown  
Recessed Panel Option Similar)



**PLUG DETAIL**



**SECTION J-J GRATING DETAIL**

NOTES:  
Grating shall be ASTM A 36 steel and shall be hot dip galvanized after assembly in accordance with ASTM Specification A 123.  
Expansion anchors shall be in accordance with ASTM A 307 (Galvanized).  
Welding shall be in accordance with the current edition of the ANSI/AWS D1.1 Welding Code.

