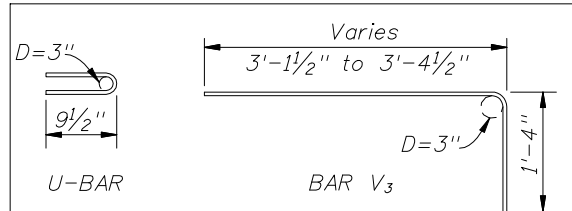
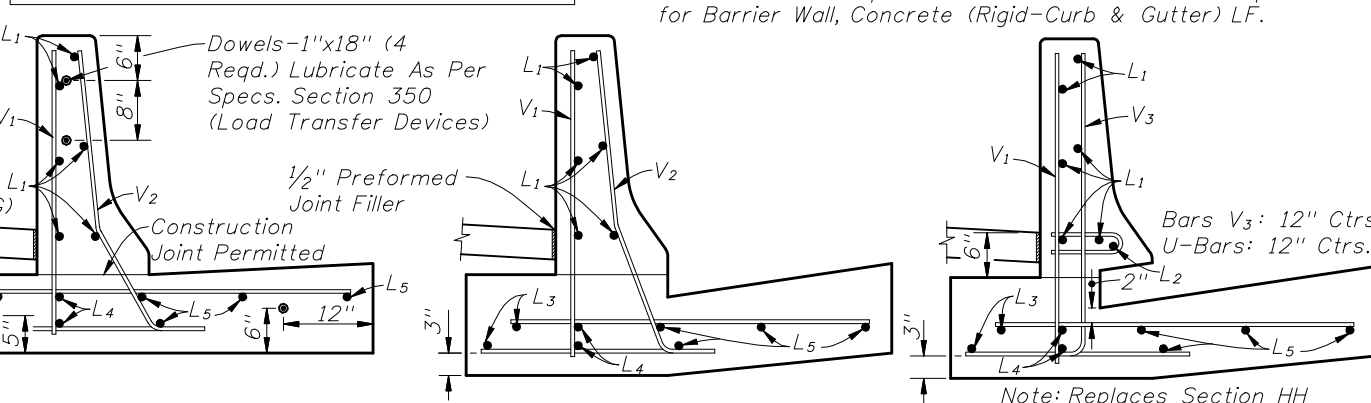
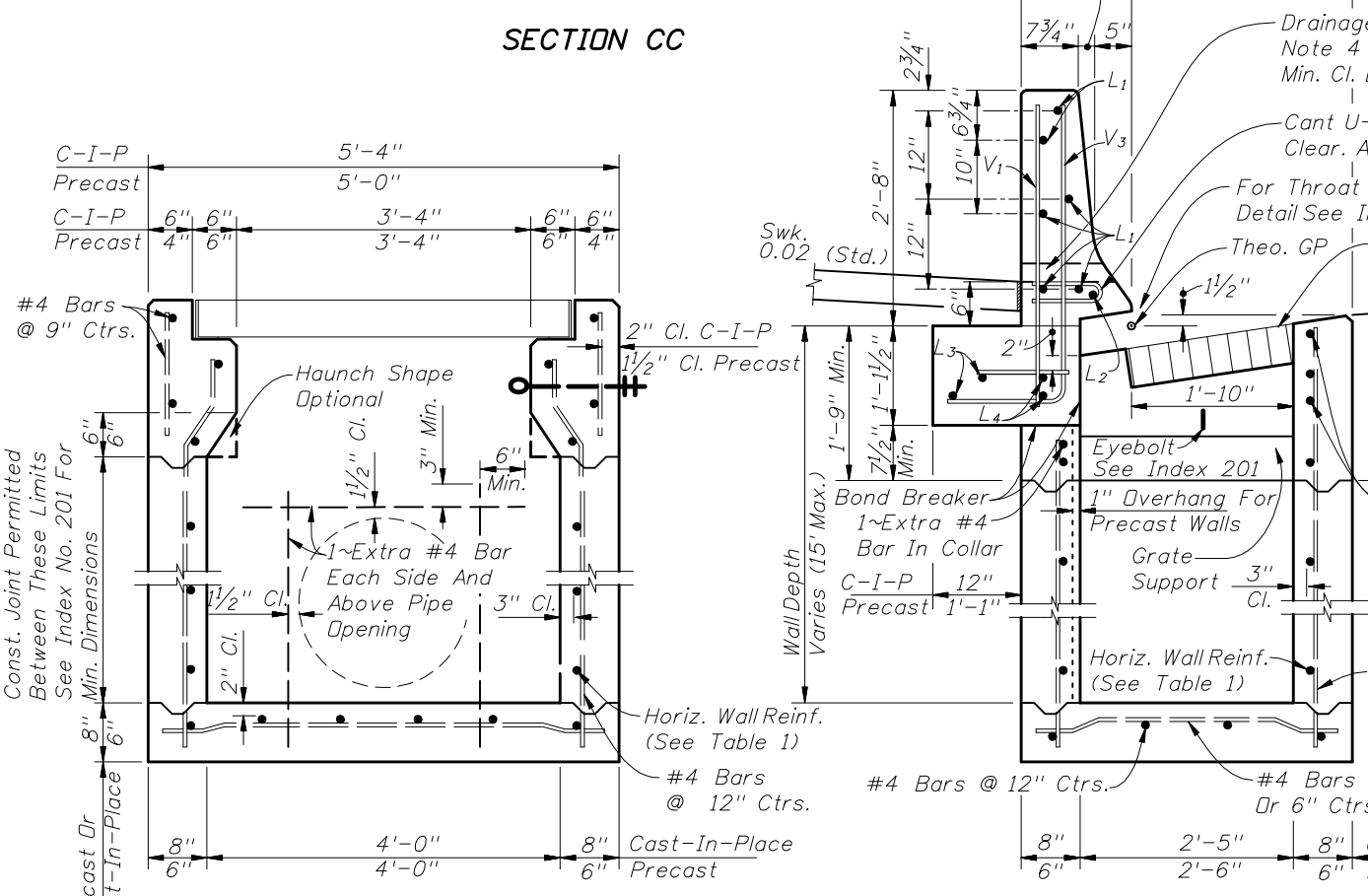
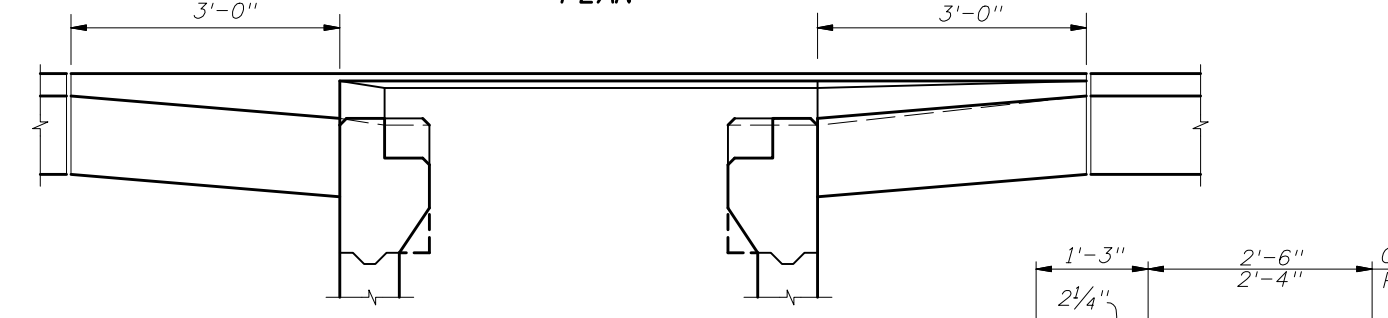


- GENERAL NOTES**
1. This inlet to be used in conjunction with Barrier Wall, Concrete (Rigid) (Curb & Gutter), Index No. 410.
  2. All reinforcing is Grade 60 bars. See Index No. 201 for equivalent area of welded wire fabric for inlet. Reinforcing shall have 2" min. cover unless otherwise shown. Bars to be cut or bent to provide 1 1/2" clearance around pipe opening. Cost of additional reinforcing in barrier wall to be included in cost for concrete barrier wall.
  3. Barrier wall shall be Class II concrete, finished in accordance with Index No. 410.
  4. All exposed edges and corners shall be 3/4" chamfer or tooled to 1/4" radius.
  5. A flat 18"x2 1/2" drainage slot shall be constructed at the inlet centerline when the inlet is located in a curb sag. No more than one V<sub>1</sub> bar, one V<sub>3</sub> bar and one U-bar are to be deleted for construction of the drainage slot.
  6. For supplemental details see Index Nos. 201 and 410.
  7. Recommended maximum pipe sizes are 18" longitudinal and 30" transverse. For larger pipe, use Alt. B bottoms, Index No. 200.
  8. Grates can be fabricated with reticuline bars or with either 3/8" electroforged or 1/2" welded cross bars and full depth bars as detailed.
  9. When Alternate G grate is specified in plans, the grate is to be hot-dip galvanized after fabrication.
  10. For pay item purposes the height of the structure shall be computed using the theoretical gutter elevation, less the flow line elevation of the lowest pipe or to top of sump floor.
  11. All dimensions are for both precast and cast-in-place inlets unless otherwise noted.
  12. Inlets to be paid for under the contract unit price for Inlets (Barrier Wall) (Rigid) (Curb & Gutter), Each.
  13. Barrier wall to be paid for under the contract unit price for Barrier Wall, Concrete (Rigid-Curb & Gutter) LF.



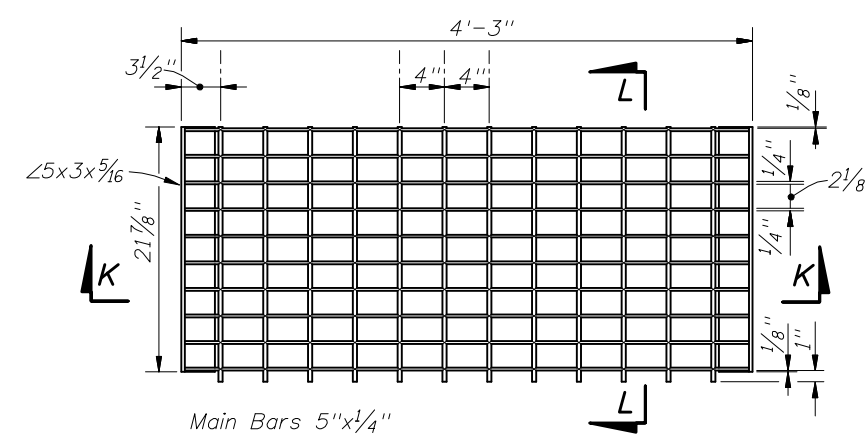
- BENDING DIAGRAM**
- Bars L<sub>1</sub>: Length 11'-1", Straight
  - Bars L<sub>2</sub>: Length 8'-4" (Single Throat) 11'-0" (Double Throat)
  - Bars L<sub>3</sub> & L<sub>4</sub>: Length 11'-1" Field Bend For 4" Drop (Top Bars) 3" Drop (Bottom Bars)
  - Bars L<sub>5</sub>: Length 2'-8" Field Bend For Drop Same As L<sub>3</sub> & L<sub>4</sub>
  - Bars V<sub>1</sub>: 18" Ctrs., Length Varies
  - Bars V<sub>2</sub>: 12" Ctrs., Field Bend
  - Bars V<sub>3</sub>: See Bending Diagram



**SECTION HH HORIZONTAL WALL REINFORCING SCHEDULE (TABLE 1)**

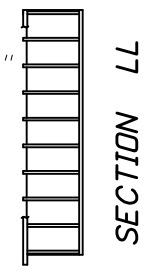
WALL DEPTH	CIPL	PRECAST	SCHEDULE	AREA (in. <sup>2</sup> /ft.)	MAX. SPACING	
					BARS	WWF
0'-4'	0'-3'		A12	0.20	12"	8"
4'-9'	3'-6'		A6	0.20	6"	5"
9'-15'	6'-10'		B5.5	0.24	5 1/2"	5"
					6 1/2"	6"



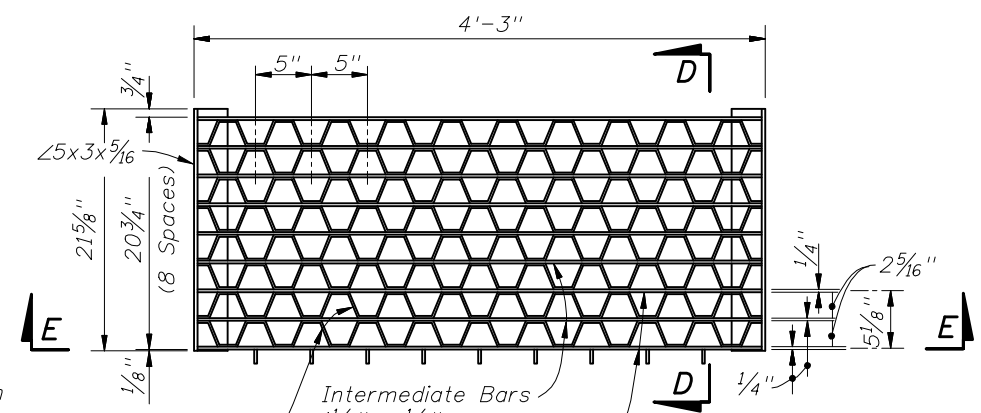


Main Bars 5"x1/4"  
 Cross Bars: Either 3/8" Ø Electroforged Dr 1/2" Ø Welded

PLAN

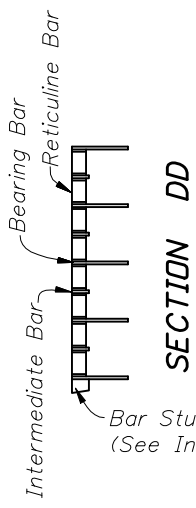


SECTION LL

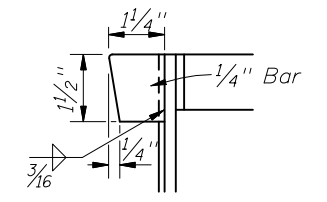


Intermediate Bars 1/2" x 1/4"  
 Bearing Bars 5" x 1/4"  
 Reticuline Bars 1/4" x 3/16"

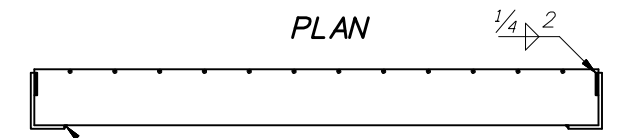
PLAN



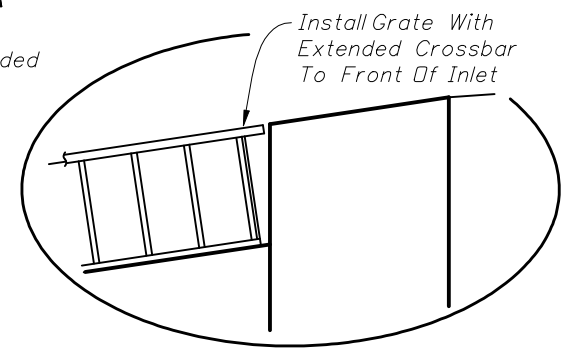
SECTION DD



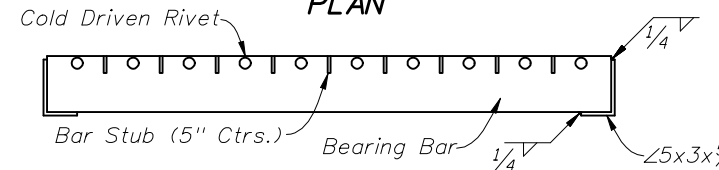
BAR STUB



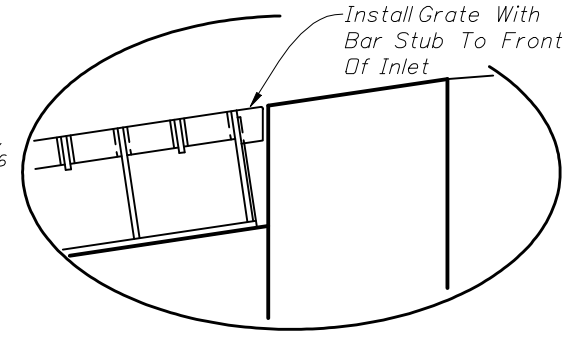
SECTION KK



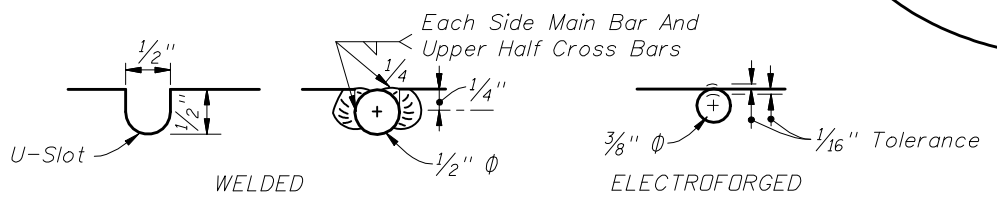
INSET B



SECTION EE



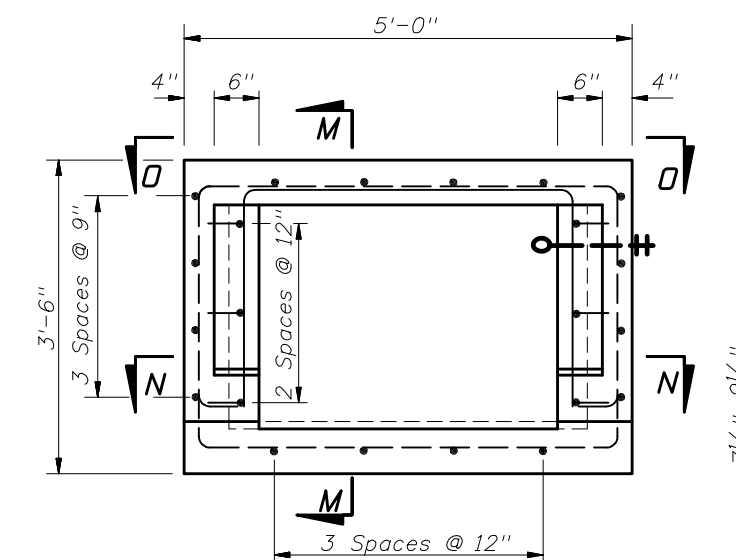
INSET C



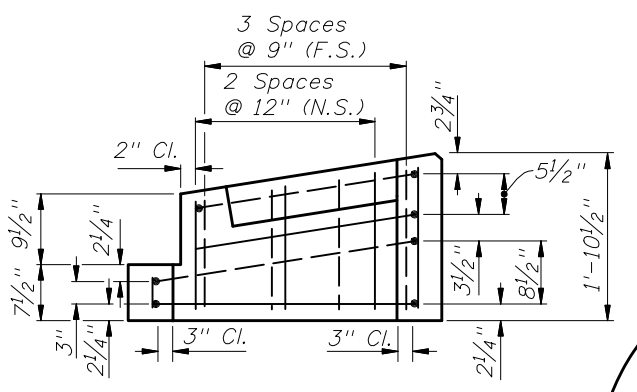
CROSS BAR OPTIONS

CROSS BAR

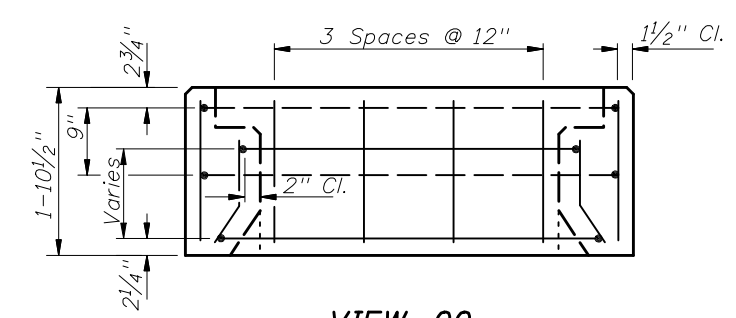
OPTIONAL STEEL GRATES



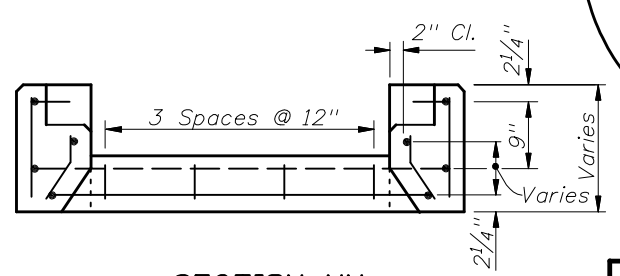
TOP VIEW OF INLET COLLAR WITHOUT GRATE



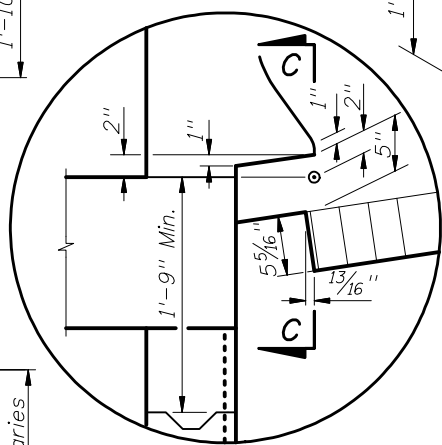
SECTION MM



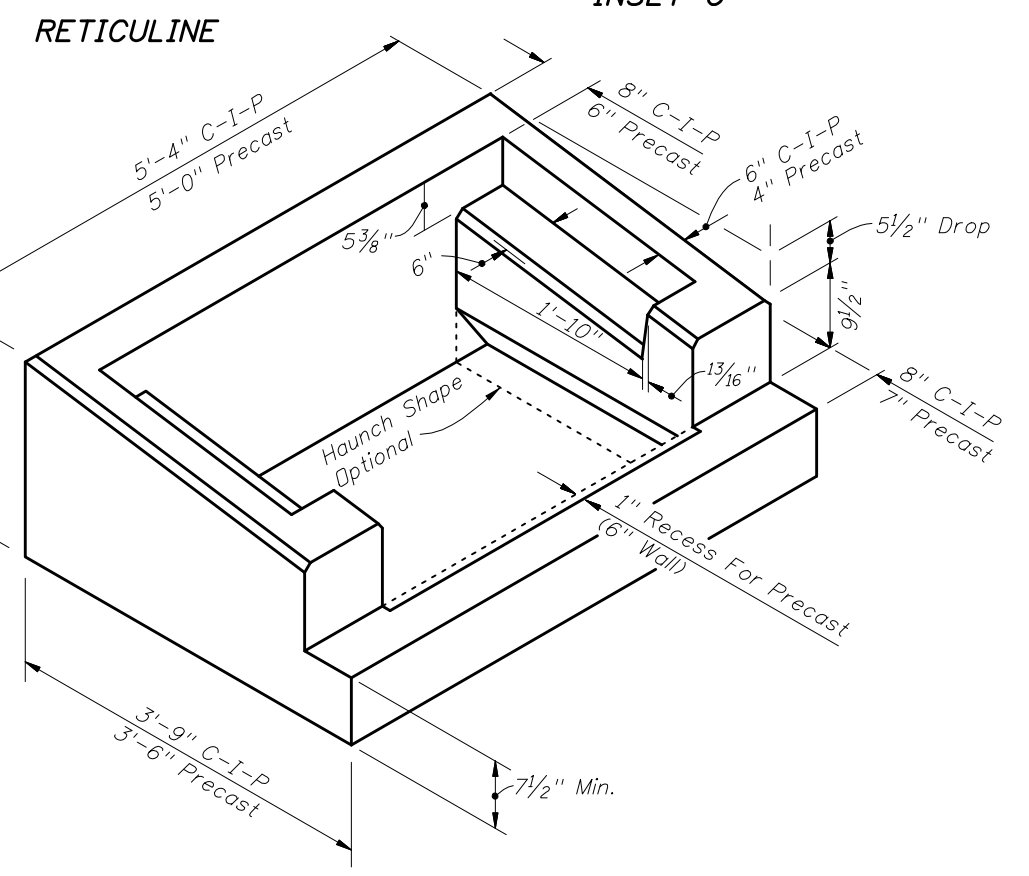
VIEW 00



SECTION NN



INSET A



PICTORIAL VIEW OF INLET COLLAR

PRECAST COLLAR REINFORCING DETAILS  
 (CAST-IN-PLACE COLLAR REINFORCING SIMILAR)

