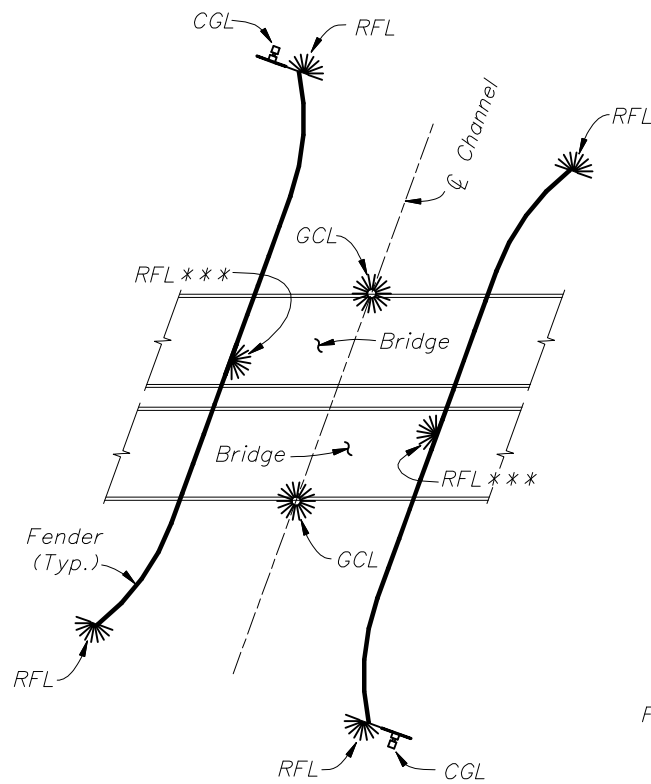
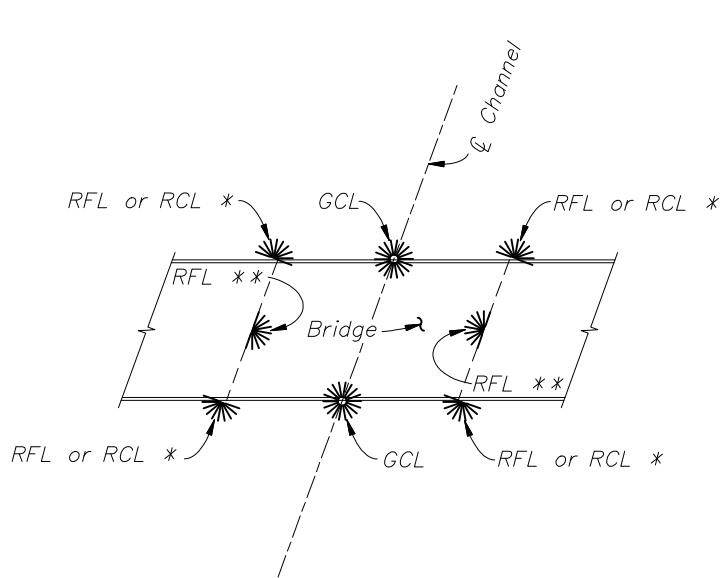


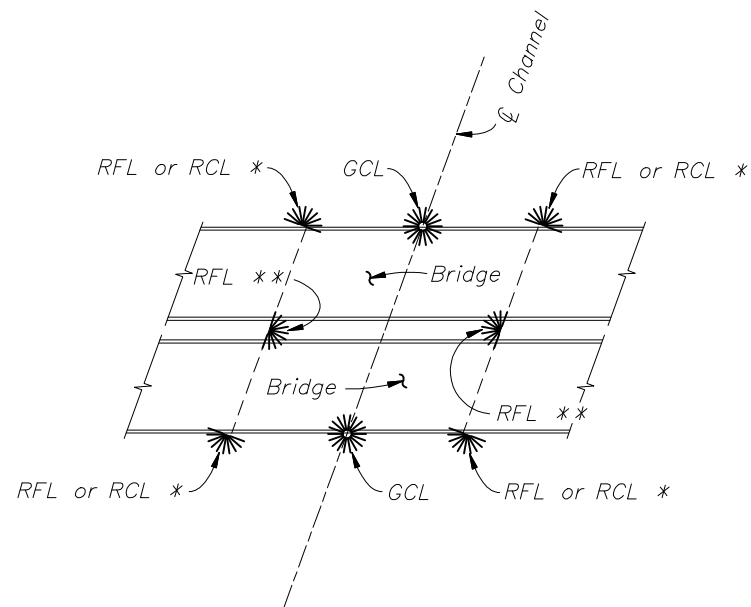
NAVIGATION LIGHT SYSTEM SCHEMATIC FOR SINGLE BRIDGE WITH FENDERS



NAVIGATION LIGHT SYSTEM SCHEMATIC FOR DUAL BRIDGES WITH FENDERS



NAVIGATION LIGHT SYSTEM SCHEMATIC FOR SINGLE BRIDGE WITHOUT FENDERS

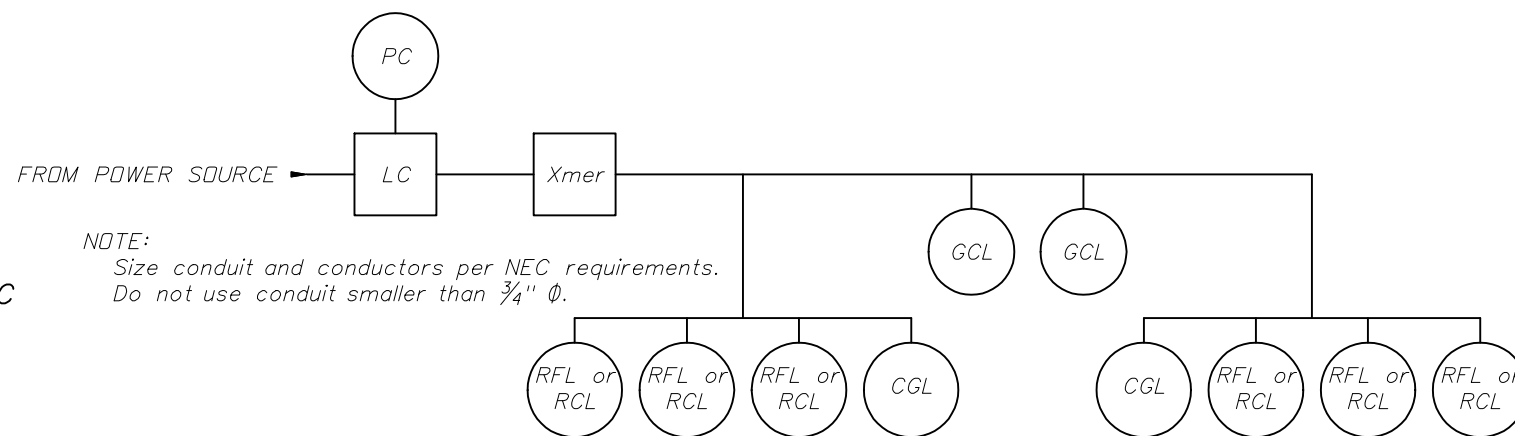


NAVIGATION LIGHT SYSTEM SCHEMATIC FOR DUAL BRIDGES WITHOUT FENDERS

* Use RFL when Pier is at Channel Edge and see CFR, Title 33, part 118 for Mounting Height restrictions. Use RCL otherwise.
 ** Mounted only on the Pier that defines CM, otherwise does not apply.
 *** RFL to be located at mid length of straight portion of fender.

NAVIGATION LIGHT NOTES:

1. Provide Navigation Light System in compliance with Specifications Section 510.



TYPICAL ELECTRICAL SCHEMATIC DIAGRAM

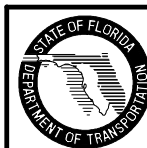
POWER CONDUCTORS			
DISTANCE (feet)	VOLTS	CONDUCTOR	TRANSFORMER
0 - 75	120	#12 AWG	N/A
75 - 500	120 or 240	#10 AWG	N/A
500-1000	240	#10 AWG	N/A
1000-2000	480	#10 AWG	2 KVA
2000-5000	480	#8 AWG	2 KVA
5000-10000	480	#6 AWG	2 KVA
over 10000	480	#4 AWG	2 KVA

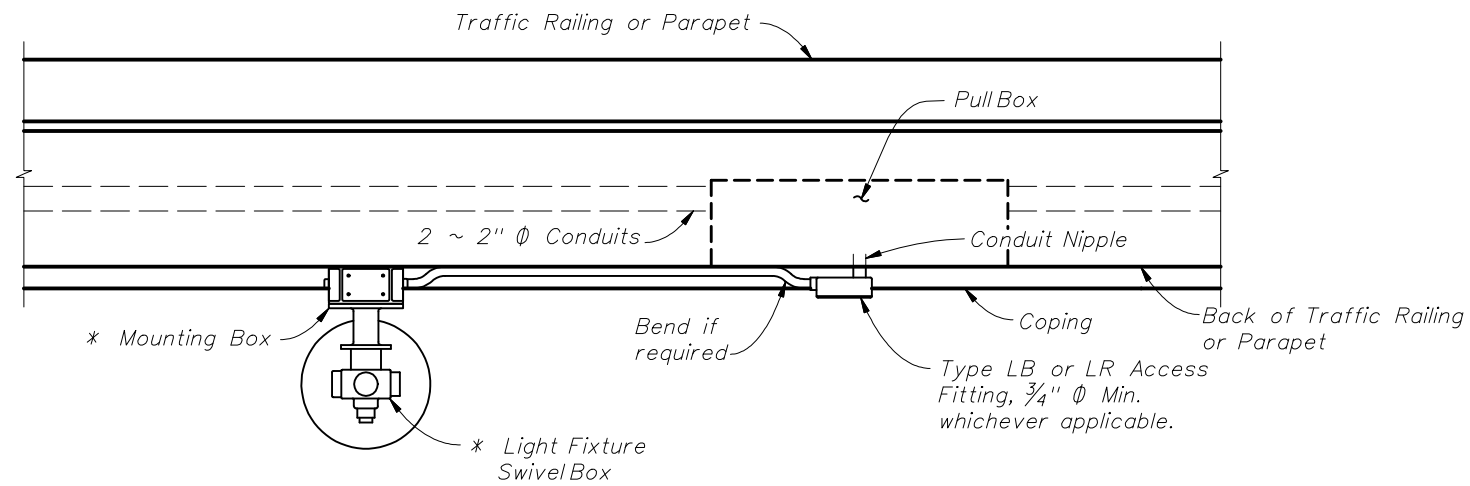
LEGEND

SYMBOL	DESCRIPTION
LC	Lighting Contactor
PC	Photocell Control
Xmer	Transformer (If Required)
	RFL Red Pier/Fender Light or RCL Red Channel Margin Light
	GCL Green Center Channel Light
	CGL Clearance Gauge Light
CM	Channel Margin or Pier inner surface whichever defines Channel Edge.

INSTRUCTIONS TO DESIGNER:

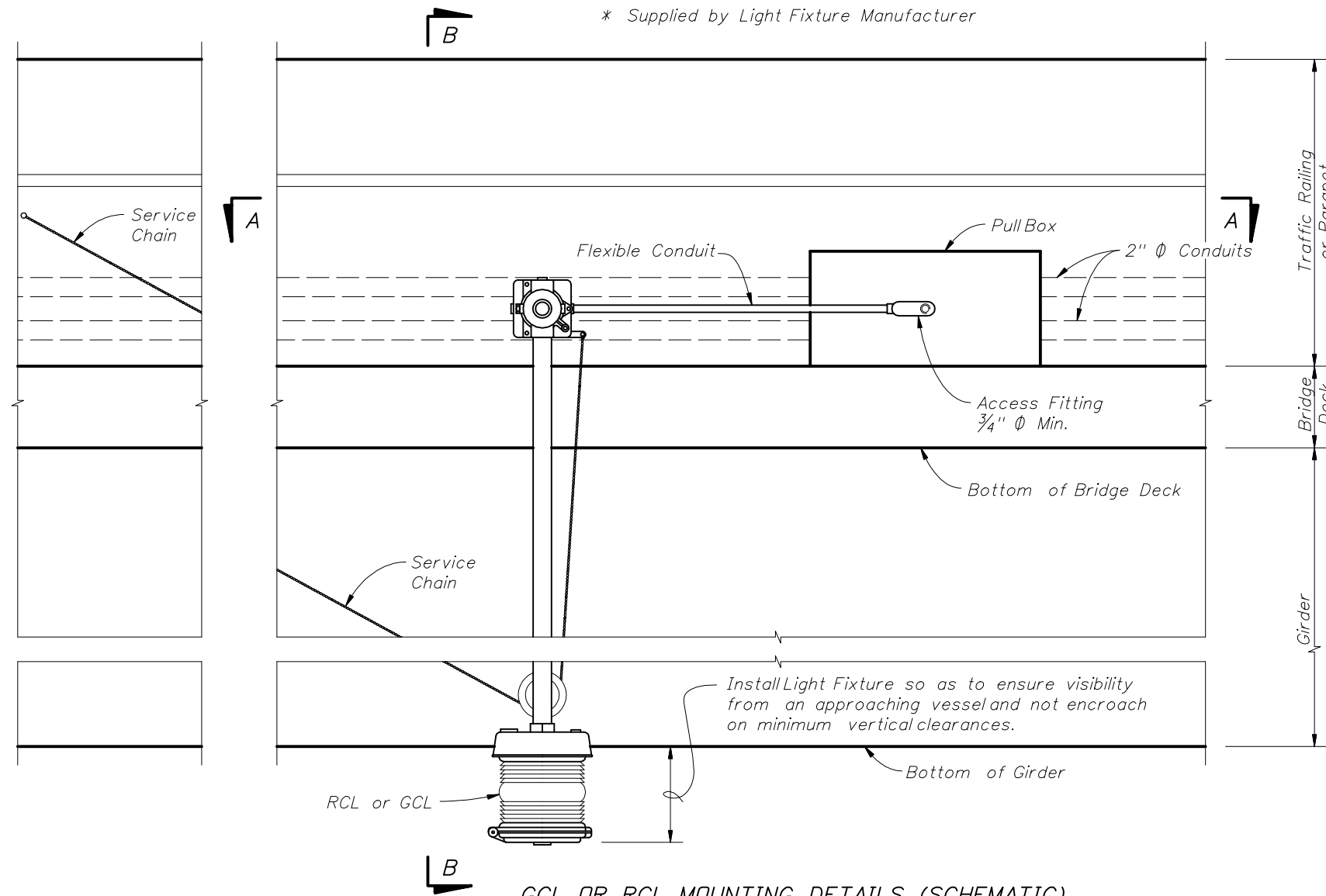
1. Provide design of GCL locations, configurations and its supporting structures.
2. Provide design of RFL locations and configurations in Fender System drawings if applicable.
3. If actual conditions differ from the typical configurations shown on this sheet, design Navigation Light System to comply with Code of Federal Regulations Title 33, Chapter 1, Part 118.
4. Provide automatic lock positions for service and operating.
5. Specify Service Chain mounting location.



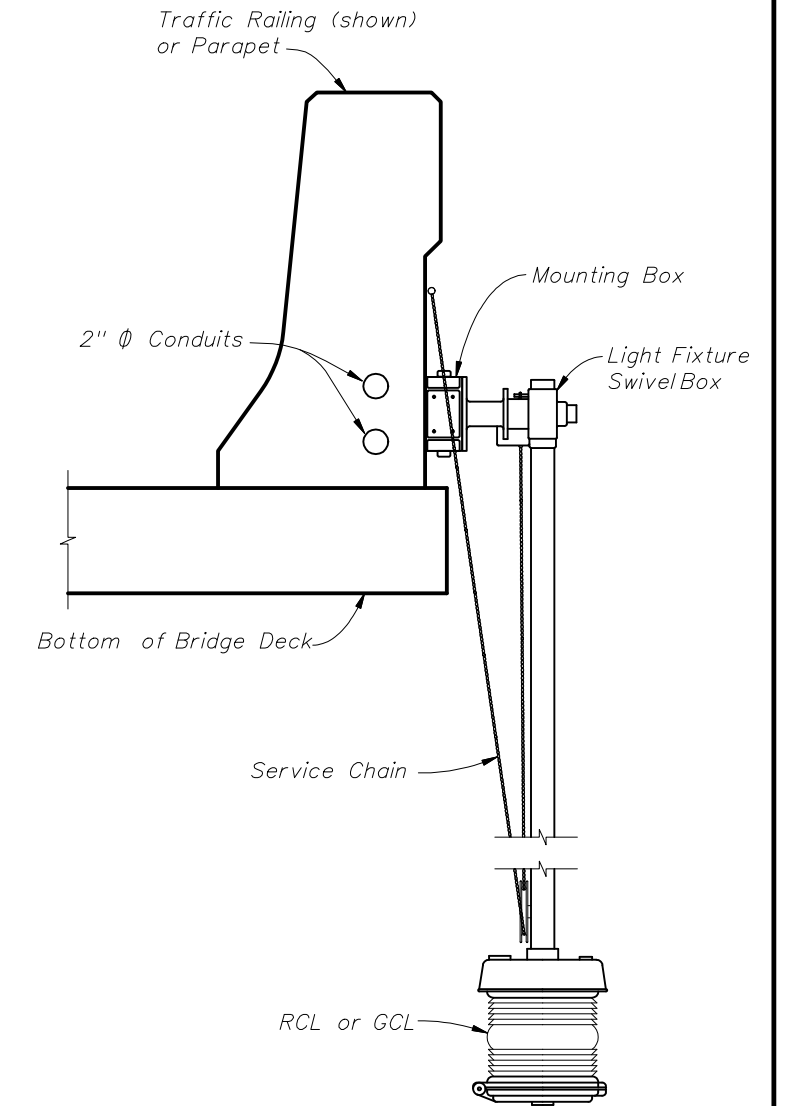


CROSS REFERENCES:
 1. For Navigation Light System notes and legend, see Sheet 1.
 2. See Utility Conduit Detail sheets for pull box dimensions & locations.

GCL OR RCL MOUNTING DETAILS (SCHEMATIC)
 VIEW A-A
 (Traffic Railing - 32" F Shape shown, other railings similar)
 * Supplied by Light Fixture Manufacturer



GCL OR RCL MOUNTING DETAILS (SCHEMATIC)
 ELEVATION VIEW
 (Traffic Railing (32" F Shape) shown, other railings similar)



SECTION B-B
 TYPICAL POSITION OF RCL OR GCL
 RELATIVE TO SUPERSTRUCTURES



2010 FDOT Design Standards

NAVIGATION LIGHT SYSTEM DETAILS
 (FIXED BRIDGES)

Last Revision 07/01/05
 Sheet No. 2 of 2

Index No. 21220