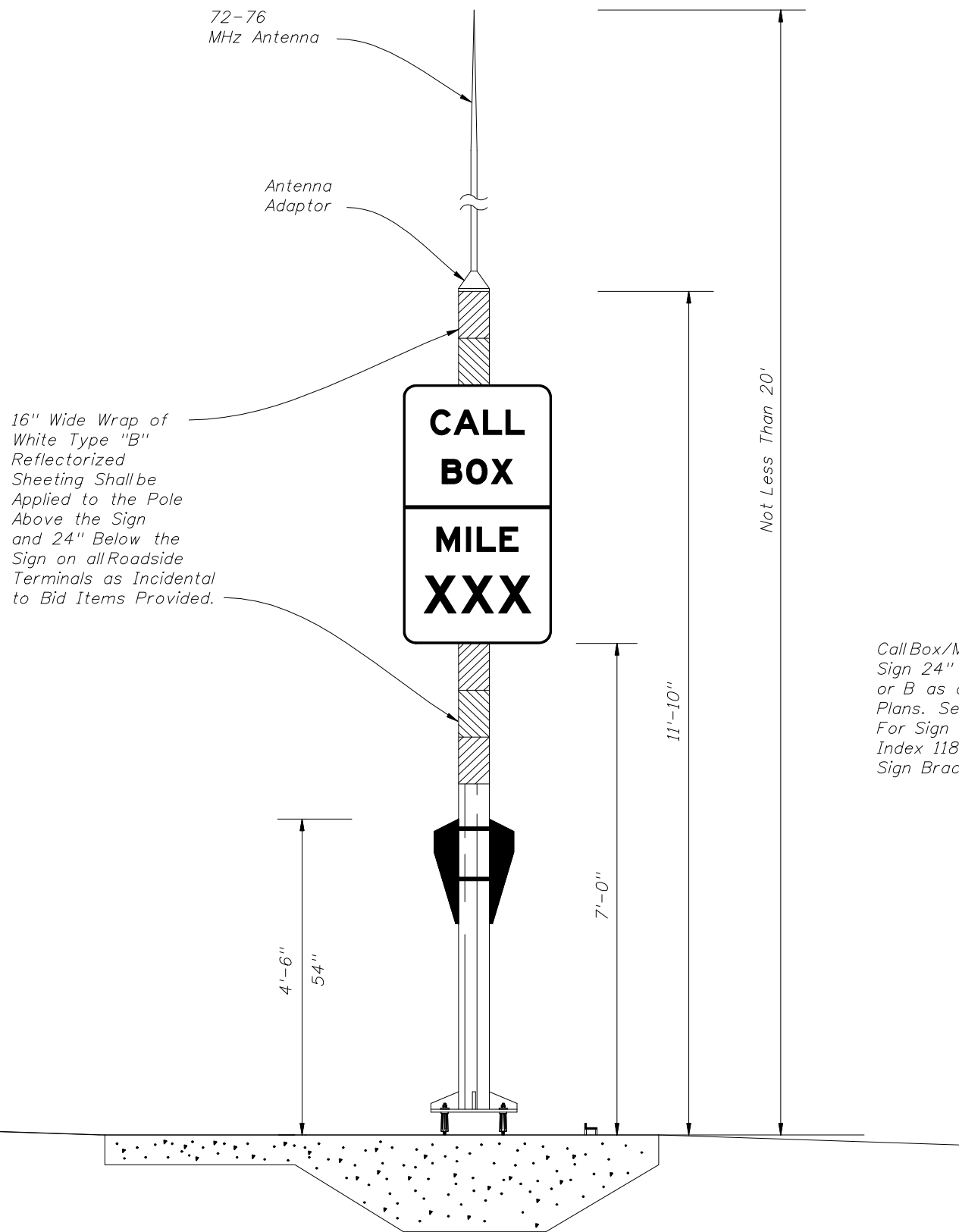
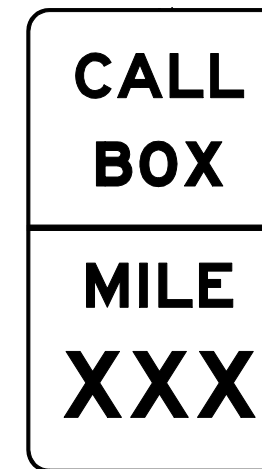


BASE PLATE & BOLT PATTERN

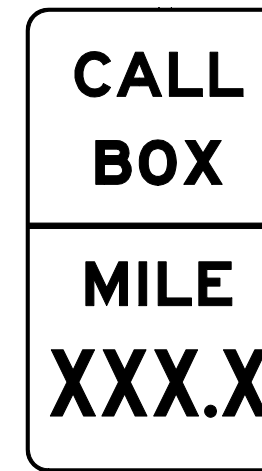


See Sheet 3 of 3 for Concrete Pad Details.

TYPICAL MOTORIST AID CALL BOX TERMINAL



FTP-63-06 SIGN A



FTP-64-06 SIGN B

Call Box/Mile Marker Sign 24" X 42". Sign A or B as called for in Plans. See Index 17355 For Sign Details and Index 11860 for Type ** Sign Bracket Details.



2010 FDOT Design Standards

MOTORIST AID CALL BOX

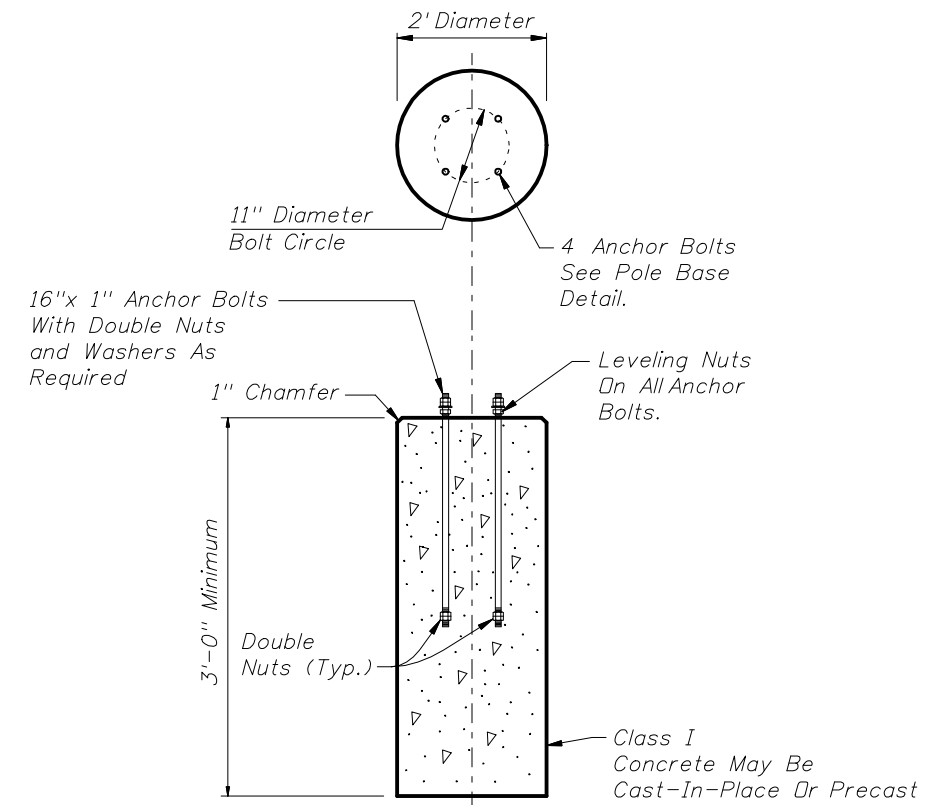
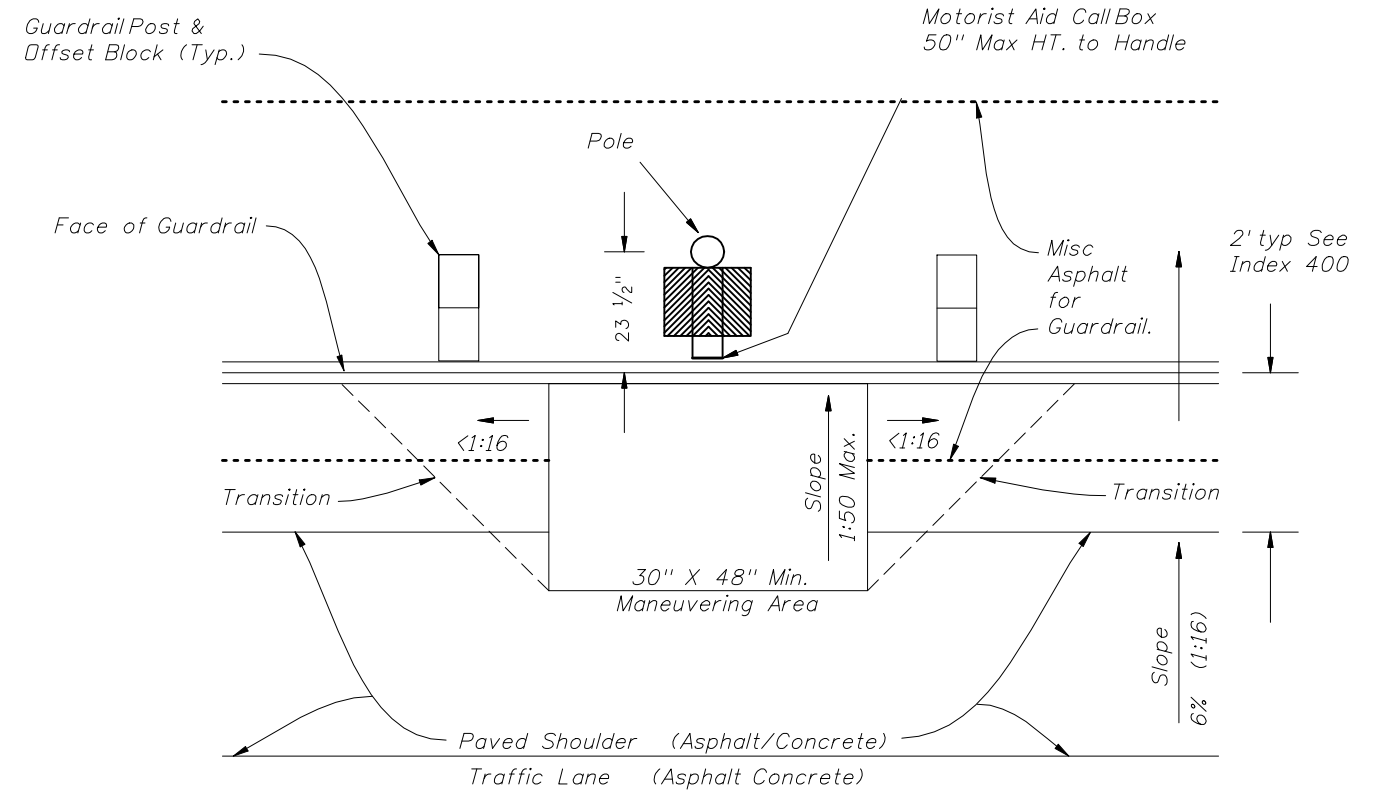
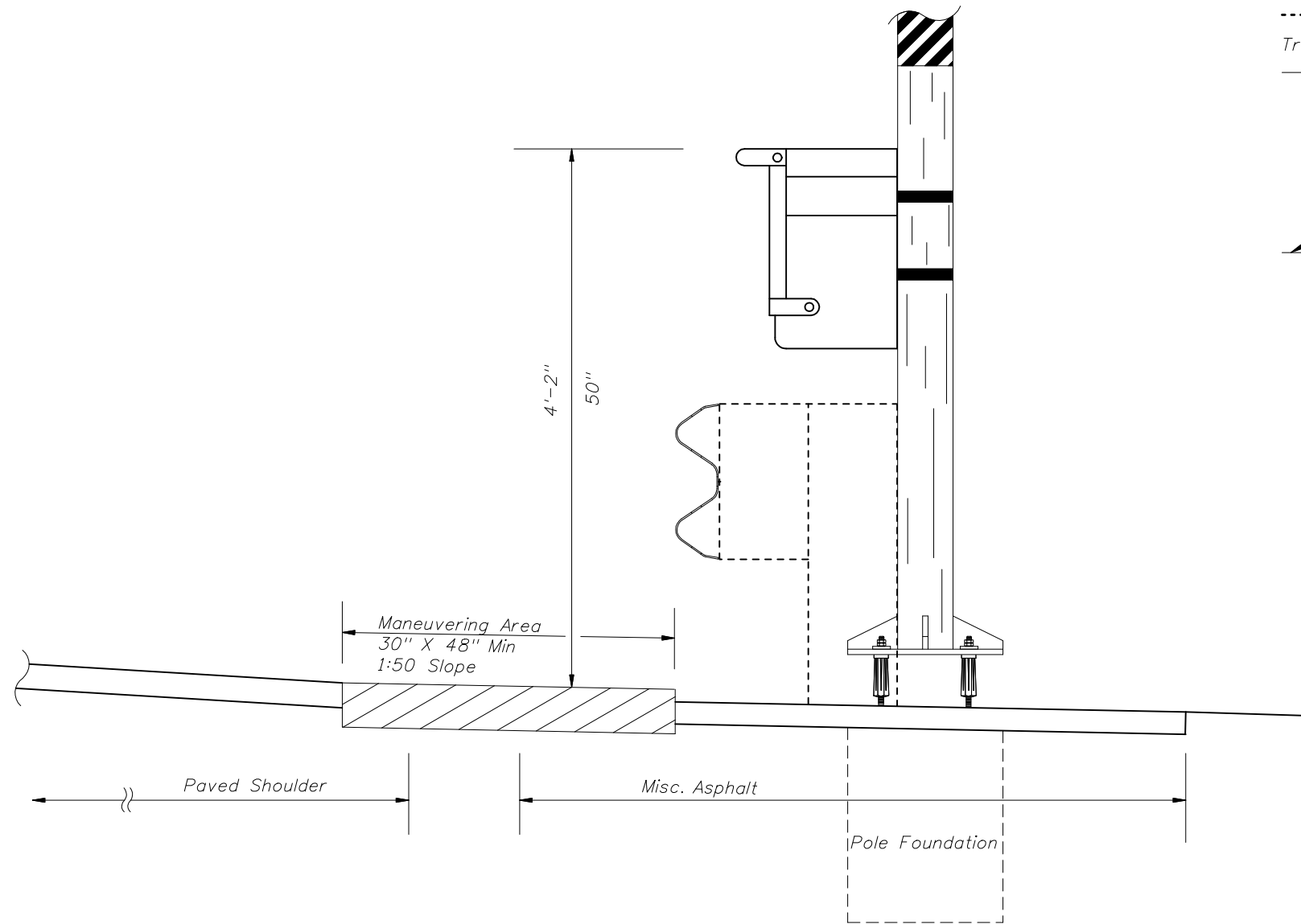
Last Revision 07/01/04

Sheet No. 1 of 3

Index No. 17600

EXISTING PAVEMENT INSTALLATION
 Remove existing pavement minimum 1" depth throughout transition and maneuvering area, replace with misc asphalt.

NEW CONSTRUCTION
 Hand work final shoulder pavement lift to plan dimensions.



MOTORIST AID CALL BOX POLE FOUNDATION
 TO BE USED ONLY BEHIND GUARDRAIL

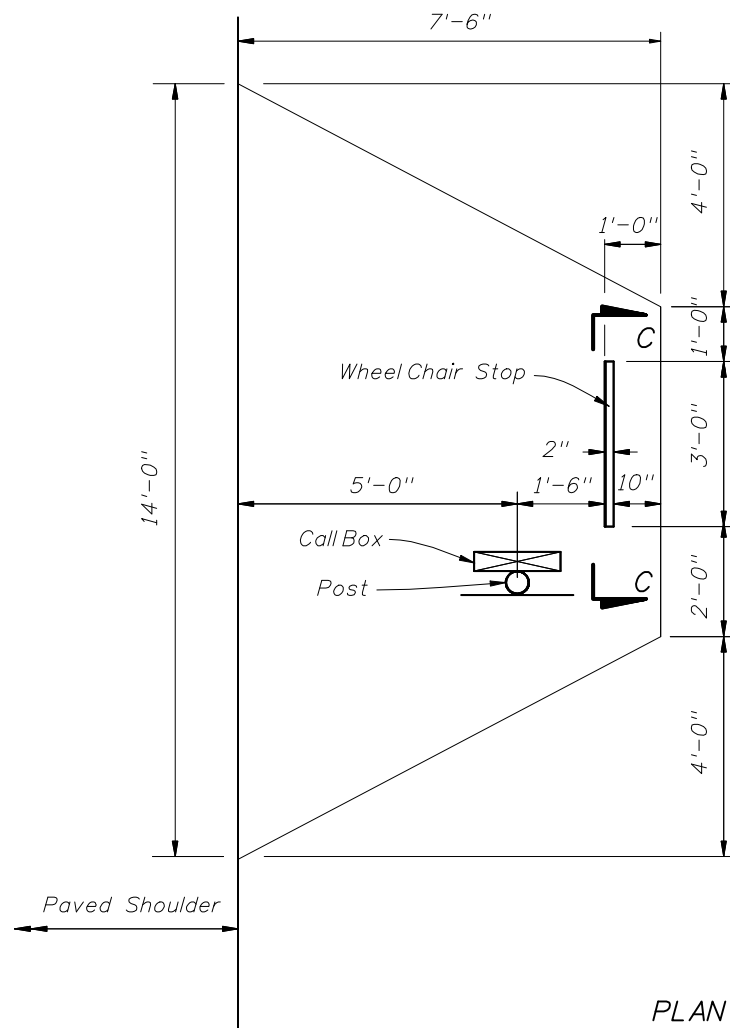
CALL BOX BEHIND GUARDRAIL



2010 FDOT Design Standards

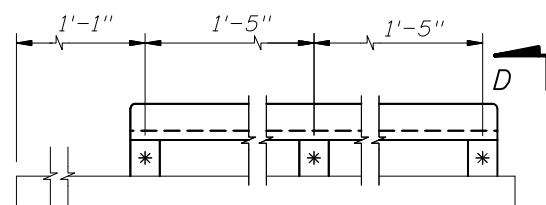
MOTORIST AID CALL BOX

Last Revision	Sheet No.
07/01/09	2 of 3
Index No.	
17600	



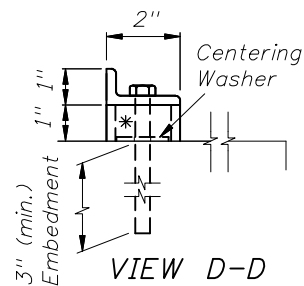
PLAN

CallBox Attachment To Slab
As Per Manufacturer's Recommendation.



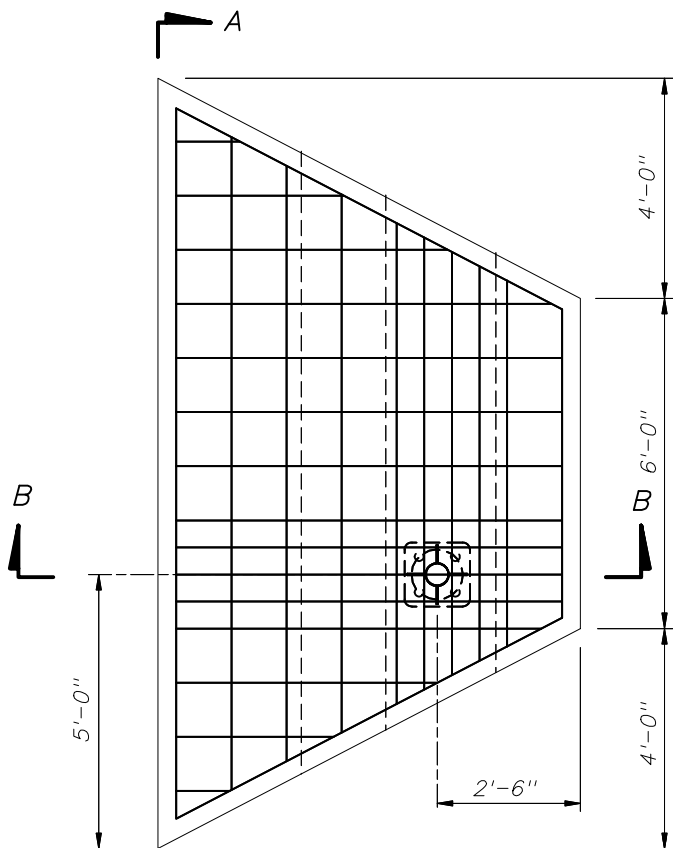
SECTION C-C

2" x 1" x 1/4" Galv. Angle And
3-3/8" ϕ x 5" Galvanized Steel Expansion
Anchor Bolt With 3" Min. Embedment

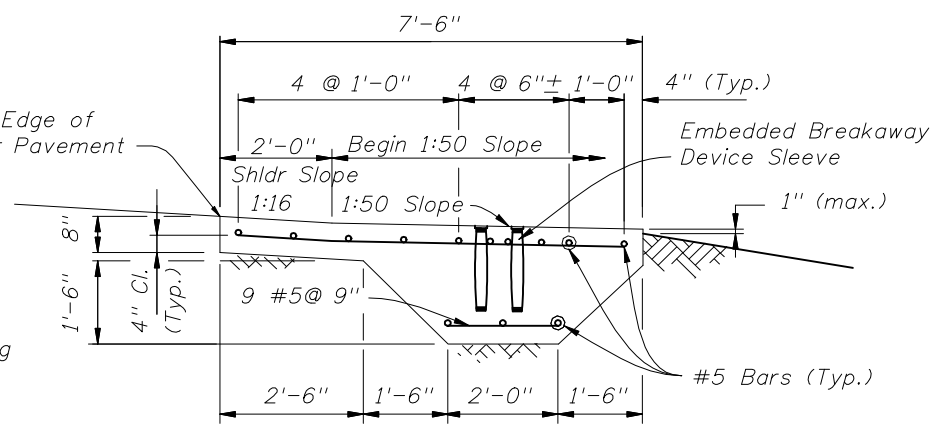


VIEW D-D

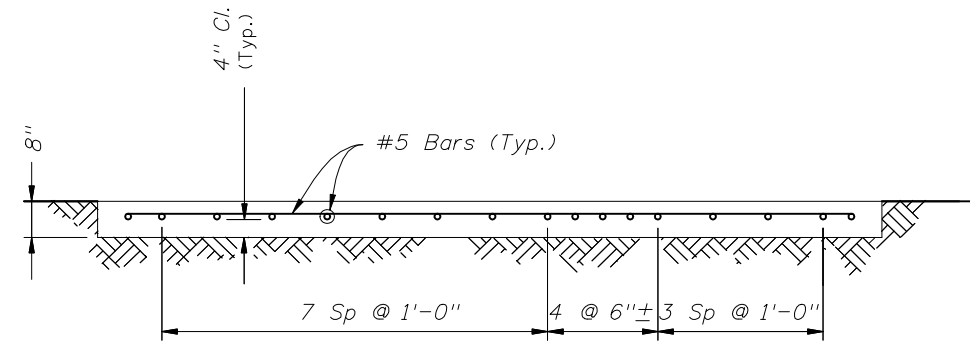
* 1 1/2" ϕ x 1" High
Galvanized Steel Pipe Spacer



SECTION A-A



SECTION B-B



SECTION A-A

MOTORIST AID CALL BOX CONCRETE PAD QUANTITIES

Concrete : 3.5 c.y. (each)
Reinforcing Steel: 243 lb (each)

GENERAL NOTES

1. Design Specifications: AASHTO Standard Specifications For Highway Bridges (Current Edition and approved revisions thereto).
2. Concrete: Concrete strength shall be Class I ($f'c=3,000$ psi).
3. Reinforcing Steel: Reinforcing Steel shall conform to ASTM A615, Grade 60.
4. Payment: Concrete Pad and Foundation shall be included in the contract unit price of call box assembly or terminal. It shall also include all labor, materials, and installation of embedded breakaway device sleeves, and miscellaneous galvanized steel for wheel chair stop and attachments.
5. Breakaway Device shall be paid for under CallBox Assembly.

WHEEL CHAIR STOP DETAIL



2010 FDOT Design Standards

MOTORIST AID CALL BOX

Last Revision	Sheet No.
07/01/09	3 of 3
Index No.	
17600	