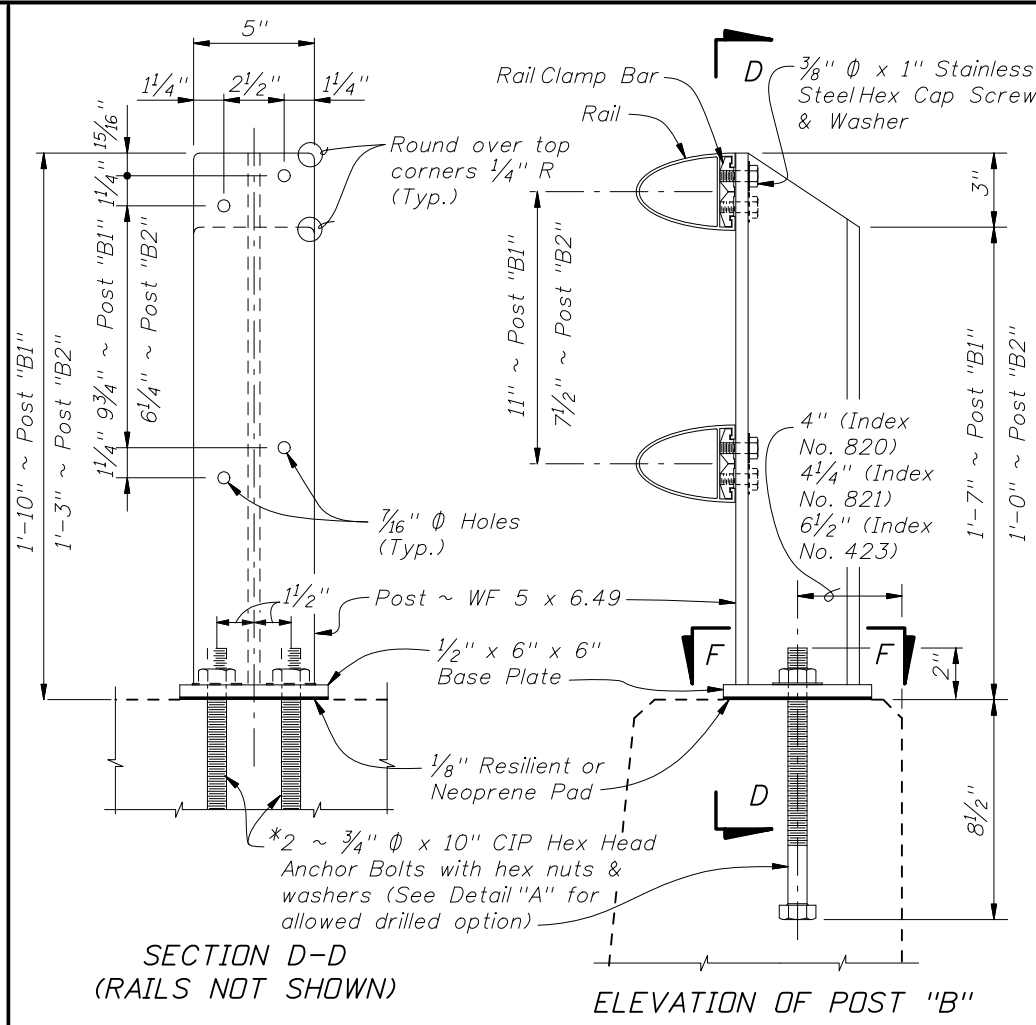


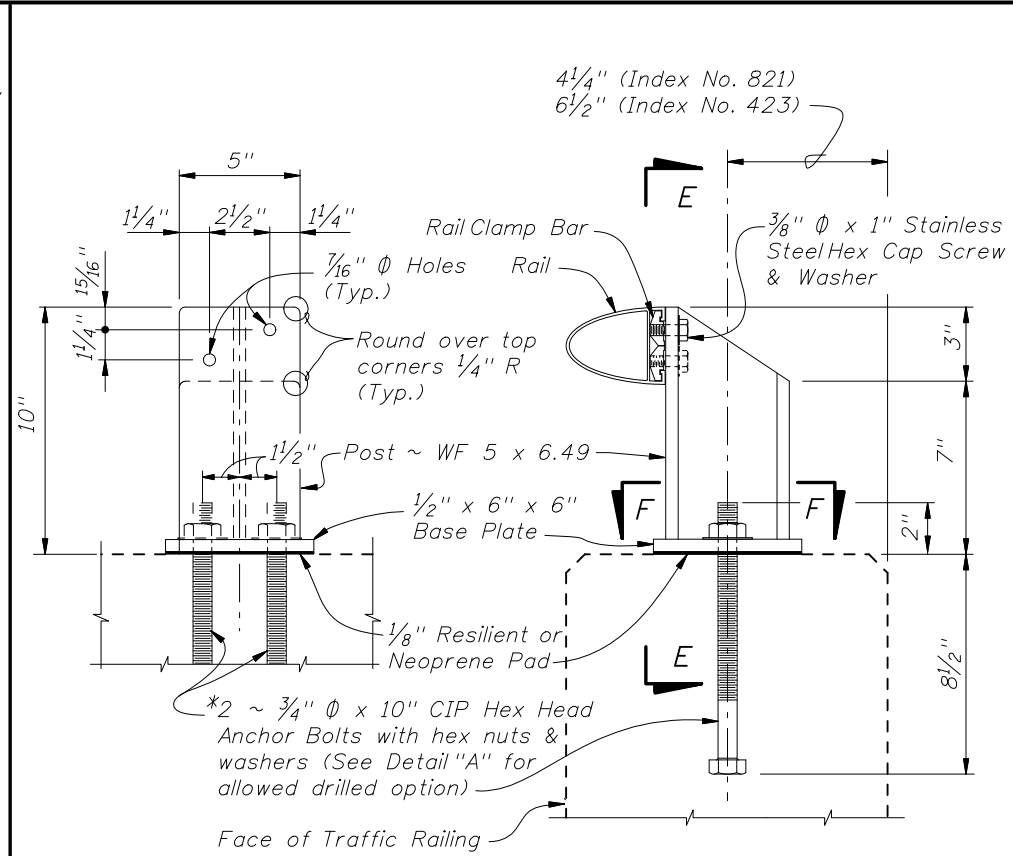
SECTION C-C  
(RAILS NOT SHOWN)

POST "A" DETAILS FOR SPECIAL HEIGHT BICYCLE RAILING ON CONCRETE PARAPET (INDEX NO. 820)



SECTION D-D  
(RAILS NOT SHOWN)

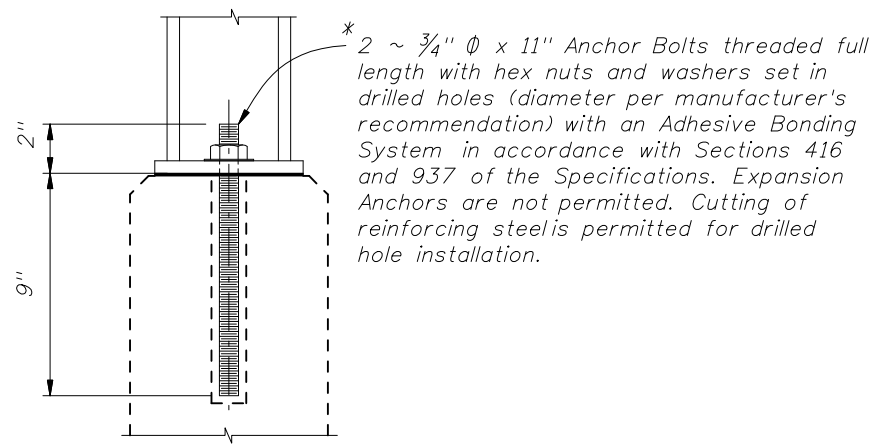
POST "B1" DETAILS FOR SPECIAL HEIGHT BICYCLE RAILING ON TRAFFIC RAILINGS (INDEX NO. 423 AND 821) AND POST "B2" DETAILS FOR PEDESTRIAN/BICYCLE RAILING ON CONCRETE PARAPETS (INDEX NO. 820)



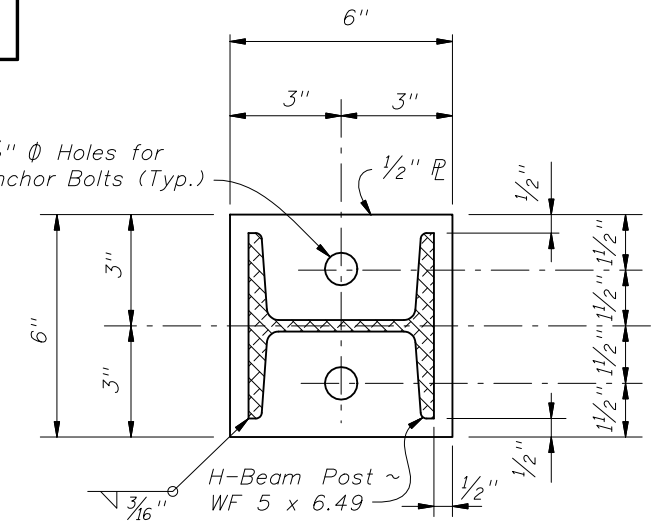
SECTION E-E  
(RAIL NOT SHOWN)

POST "C" DETAILS FOR PEDESTRIAN/BICYCLE RAILING ON TRAFFIC RAILINGS (INDEX NO. 423 AND 821)

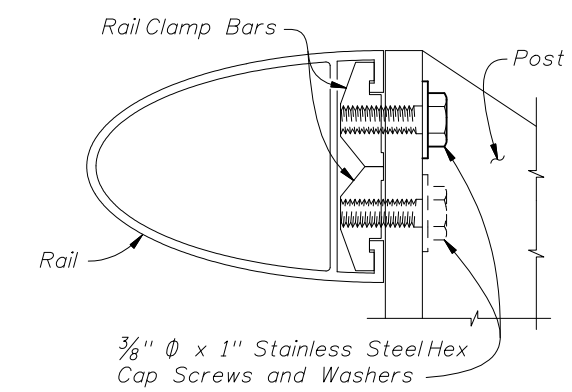
NOTE: After nuts have been tightened, the bolt threads shall be deformed to prevent removal of nuts. Tack welding of nuts to anchor bolts, to prevent theft, is permitted. Coat deformed or tack welded threads with a galvanizing compound in accordance with Section 562 of the Specifications.



ALTERNATE ANCHOR BOLT DETAIL "A"  
(CONCRETE PARAPET SHOWN, TRAFFIC RAILINGS SIMILAR)



SECTION F-F  
BASE PLATE DETAIL



RAIL TO POST CONNECTION DETAIL

CROSS REFERENCES:  
For Post "A" and Post "B2" spacing see Index No. 820.  
For Post "B1" & Post "C" spacing see Index Nos. 423 or 821.  
For Rail Details and Notes see Index No. 822, Sheet 2.

REVISIONS			
DATE	BY	DESCRIPTION	
01/01/08	SUN	Added Post "B1" and "B2" dimensions to POST "B" DETAILS. Changed Cross References and Title for POST "A" DETAILS, POST "B" DETAILS and POST "C" DETAILS.	

