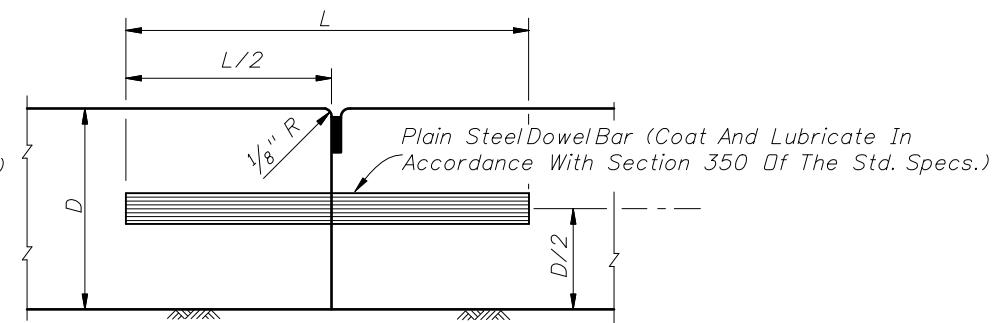
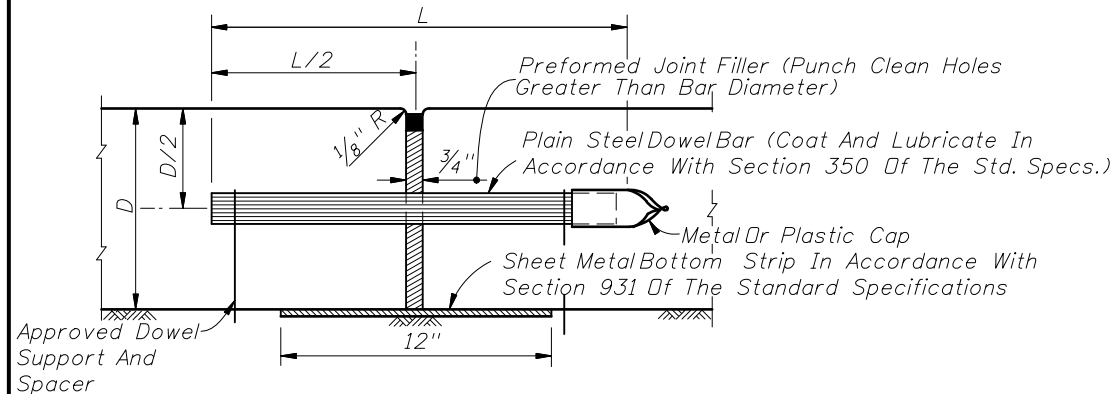
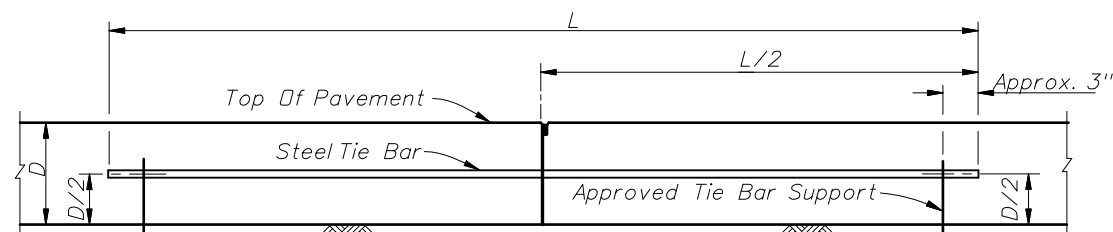


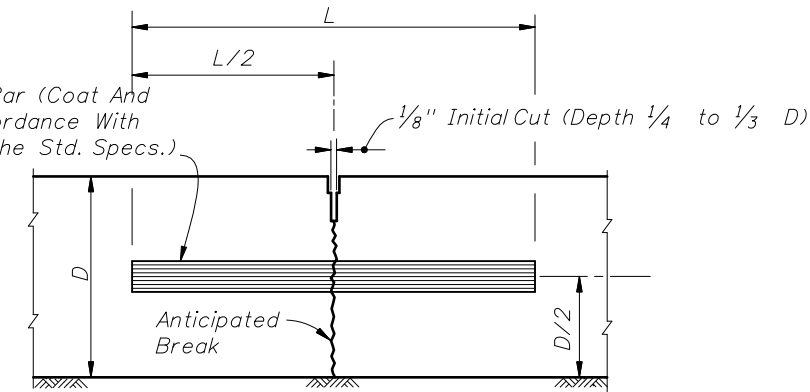
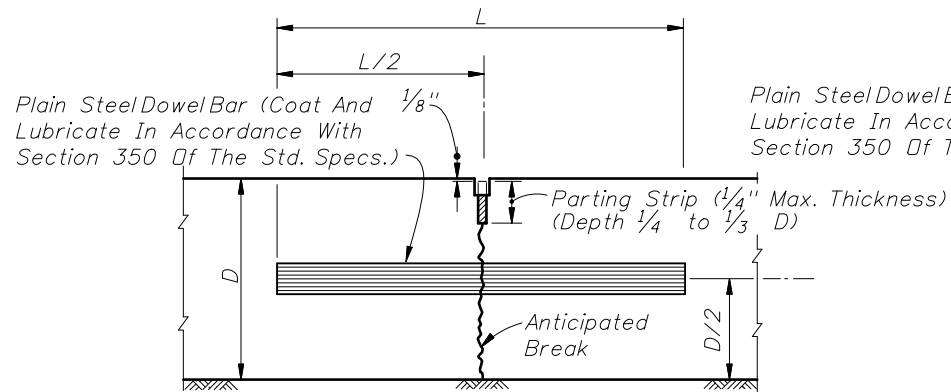
METAL OR PLASTIC CAPS FOR DOWEL BARS



BUTT CONSTRUCTION JOINT TO BE USED AT DISCONTINUANCES OF WORK

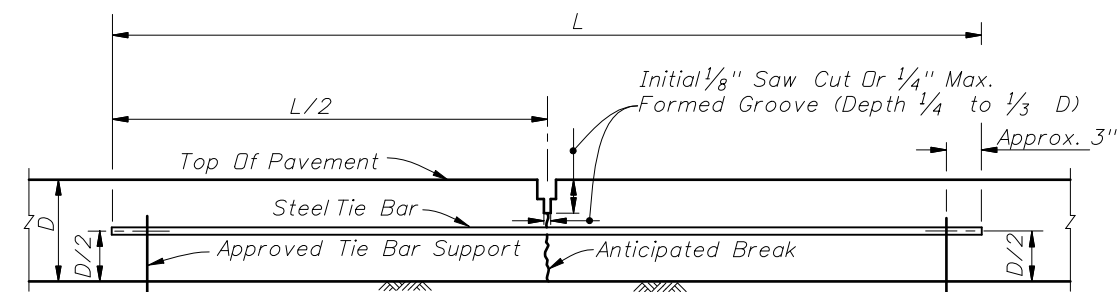


LONGITUDINAL BUTT CONSTRUCTION JOINT



TRANSVERSE CONTRACTION JOINT, VIBRO CAST METHOD

TRANSVERSE CONTRACTION JOINT, SAWED METHOD



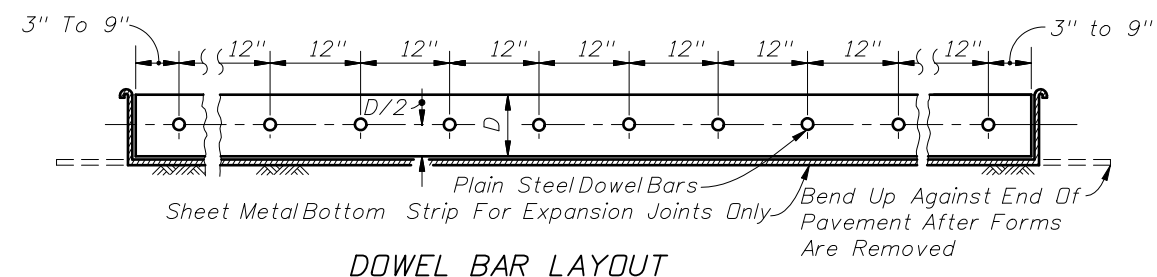
Note: Slabs poured simultaneously. Tie bars may be inserted in the plastic concrete by means approved by the Engineer.

LONGITUDINAL LANE-TIE JOINT

Tie bars are deformed #4 or #5 reinforcing steel bars meeting the requirements of Section 931 of the Standard Specifications.

Provide a standard load transfer tied joint with #4 bars 25" in length at 24" or #5 bars 30" in length at 38" spacing.

LONGITUDINAL JOINTS



DOWEL BAR LAYOUT

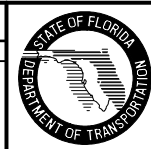
DOWELS (LENGTH 18")	
Pavement Thickness "D"	Diameter
6" - 6 1/2"	3/4"
7" - 8 1/2"	1"
9" - 10 1/2"	1 1/4"
≥ 11"	1 1/2"

TRANSVERSE JOINTS ARE TO BE SPACED AT A MAXIMUM OF 15'. DOWELS ARE REQUIRED AT ALL TRANSVERSE JOINTS UNLESS OTHERWISE NOTED IN PLANS.

TRANSVERSE JOINTS

Note: For joint seal dimensions see Sheet 2.

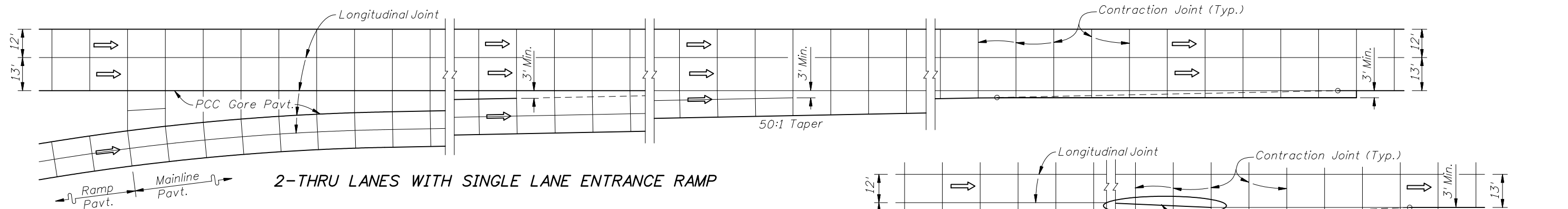
REVISIONS					
DATE	BY	DESCRIPTION	DATE	BY	DESCRIPTION
11/14/07	HSD	Deleted tie bar spacing table and revised notes.			



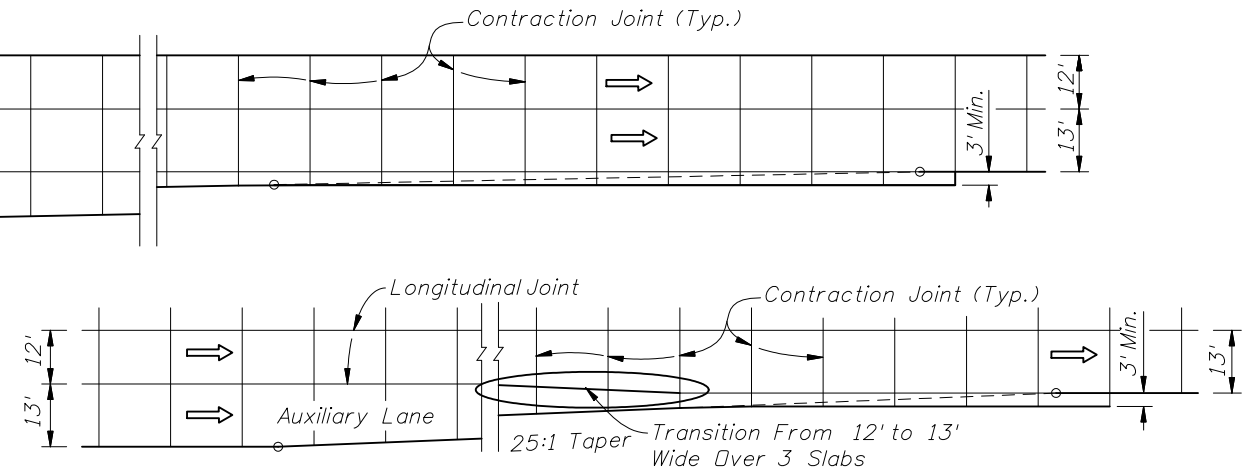
2008 Interim Design Standard

CONCRETE PAVEMENT JOINTS

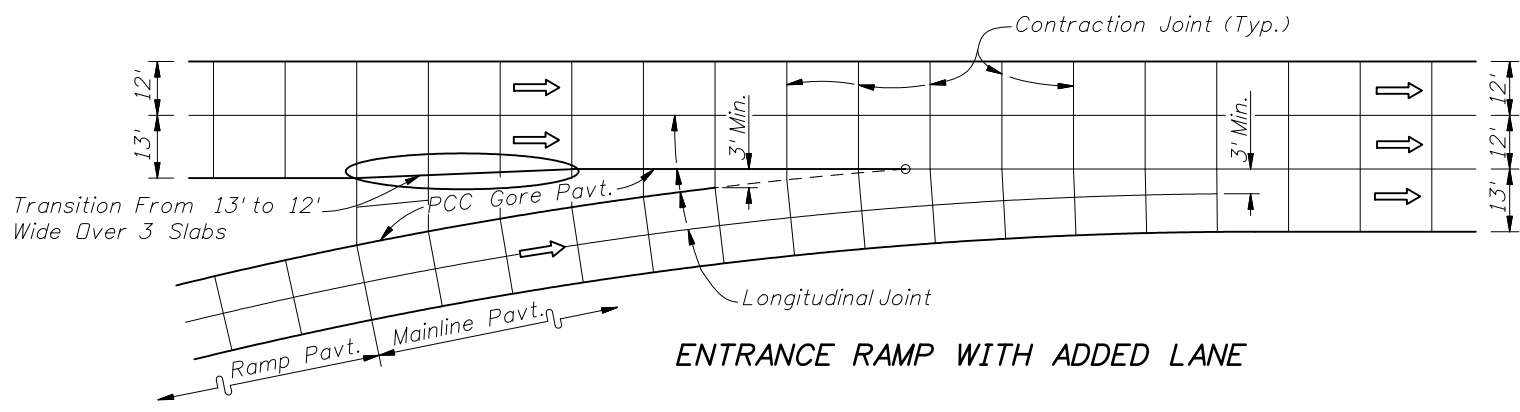
Interim Date	Sheet No.
01/01/08	1 of 4
Index No.	
305	



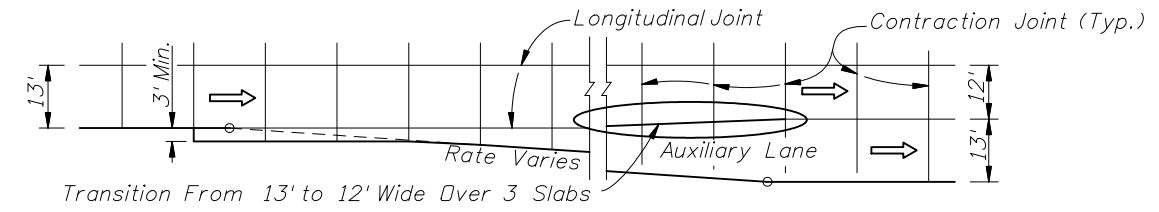
2-THRU LANES WITH SINGLE LANE ENTRANCE RAMP



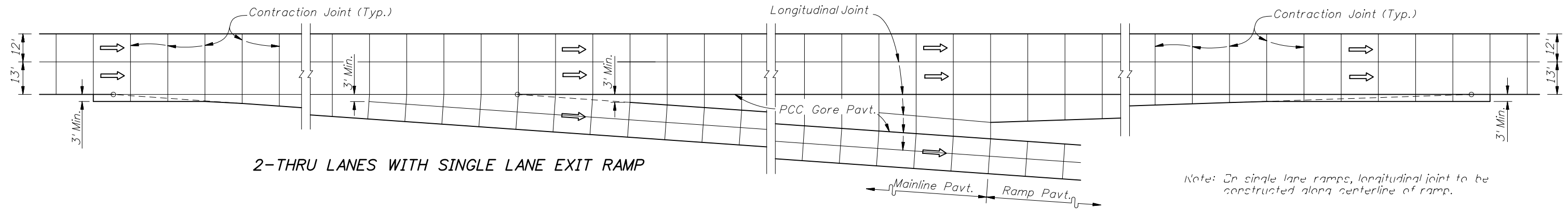
ENTRANCE TAPER WITH AUXILIARY LANE



ENTRANCE RAMP WITH ADDED LANE

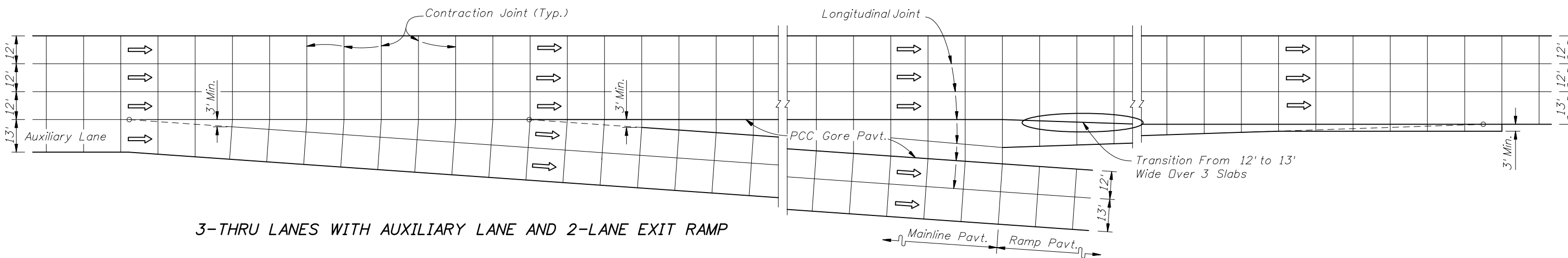


EXIT TAPER WITH AUXILIARY LANE



2-THRU LANES WITH SINGLE LANE EXIT RAMP

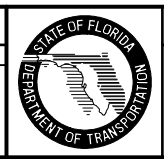
Note: On single lane ramps, longitudinal joint to be constructed along centerline of ramp.



3-THRU LANES WITH AUXILIARY LANE AND 2-LANE EXIT RAMP

JOINT LAYOUT AT ENTRANCE AND EXIT RAMP TERMINALS

REVISIONS					
DATE	BY	DESCRIPTION	DATE	BY	DESCRIPTION
11/14/07	HSD	Changed width of outside lane from 14' to 13'.			



2008 Interim Design Standard
CONCRETE PAVEMENT JOINTS

Interim Date: 01/01/08
 Sheet No.: 4 of 4
 Index No.: 305