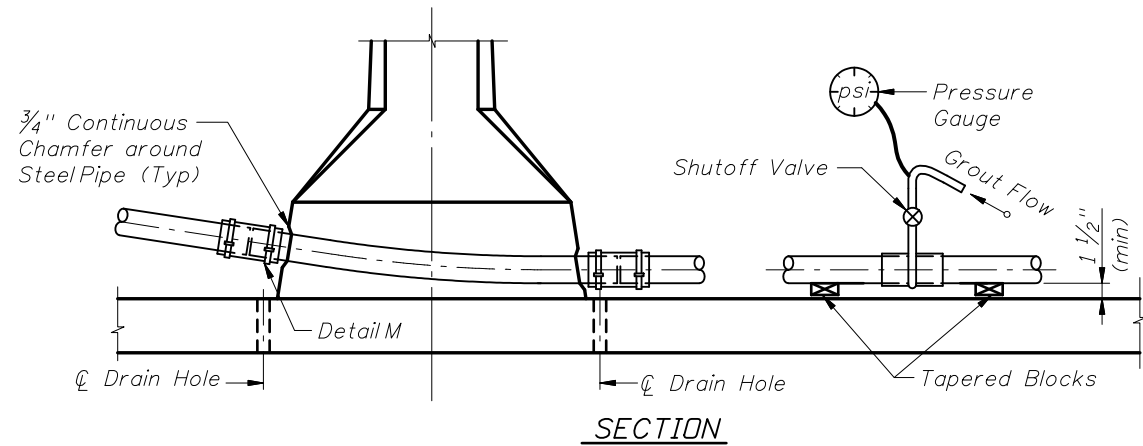
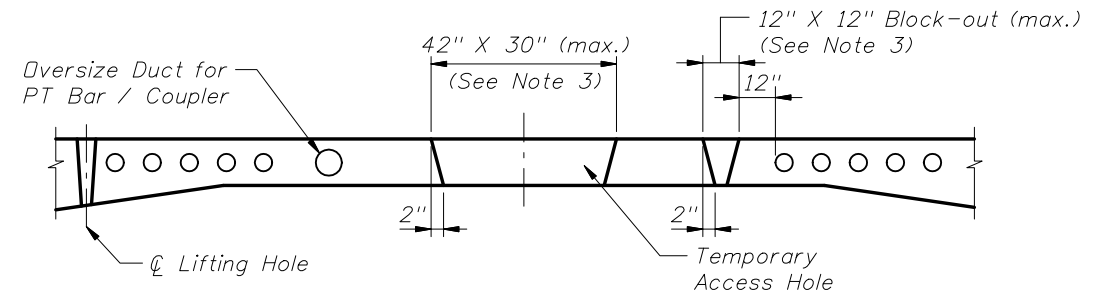


NOTES:
Place Tapered Blocks Under Each Tendon to be Grouted to Raise Duct off Tendon Strands. Center Strands within Duct before Grouting. Blocks Shall be Removed after Grout has Set. Blocks Shall not Damage or Permanently Deform Duct.



GROUTING FOR SPAN BY SPAN CONSTRUCTION



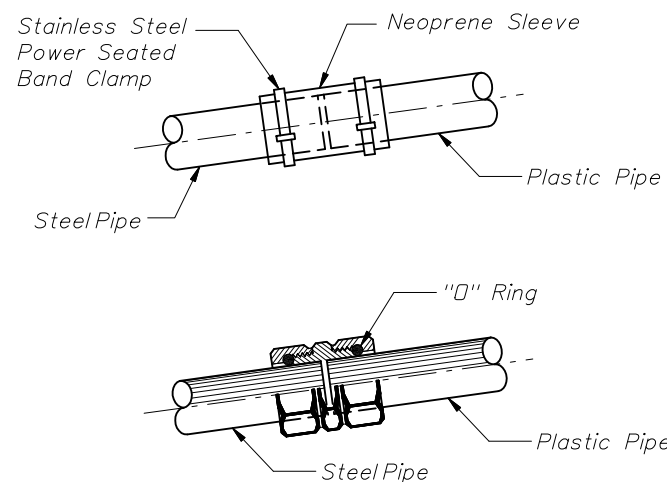
TEMPORARY ACCESS HOLES

Notes: Temporary Access Holes

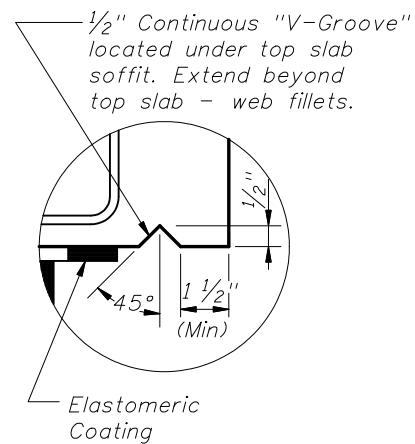
1. Temporary access holes to facilitate access for erection, jacking and grouting operations inside the box during construction are allowed. The access holes shall be limited to a maximum size of 42" wide x 30" long and shall be limited to (1) per span.
2. Slab block-outs for temporary / permanent longitudinal post-tensioning bars are not allowed. Temporary / permanent PT bars in the top slab shall be placed in oversized ducts in the slab to accommodate both the bar and coupler.
3. In lieu of (1) 42" x 30" temporary access hole, a maximum of 2 top slab blockouts (12" x 12" (max.)) between the webs is allowed for construction per span. Block-outs shall be a minimum of 12" from the nearest duct or anchor and shall be located as to prevent direct drip onto bottom slab anchors.

Notes: Repair of Temporary Access Holes, Block-outs, and Lifting Holes

1. Form all large blockouts with tapered sides.
2. Immediately before casting the concrete, mechanically clean the mating concrete surfaces to remove any laitance and to expose small aggregate.
3. Repair all holes and blockouts with Magnesium Ammonium Phosphate Concrete within 24 hours of cleaning concrete.
4. After completion of the deck grooving, coat the repaired and surrounding concrete surfaces with Methyl Methacrylate.
5. Alternately, epoxy grout may be used to repair holes. Methyl Methacrylate is not required with epoxy grout.



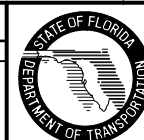
Use Approved Duct Couplers with Post-Tensioned System



DETAIL OF DRIP LEDGE AT ABUTMENTS AND EXPANSION JOINTS FOR SEGMENTAL AND CAST-IN-PLACE BOX CONSTRUCTION

REVISIONS

| DATE | BY | DESCRIPTION | DATE | BY | DESCRIPTION |
|----------|-----|--|------|----|-------------|
| 01/01/08 | SJN | Deleted Shrink Wrap from Duct Coupler Detail with Neoprene Sleeve. | | | |



2008 Interim Design Standard

POST-TENSIONING ANCHORAGE AND GROUTING DETAILS

| | |
|--------------|-----------|
| Interim Date | Sheet No. |
| 01/01/08 | 3 of 3 |
| Index No. | |
| 21803 | |