

FIGURE A  
POLE MOUNTED  
DETECTOR STATION

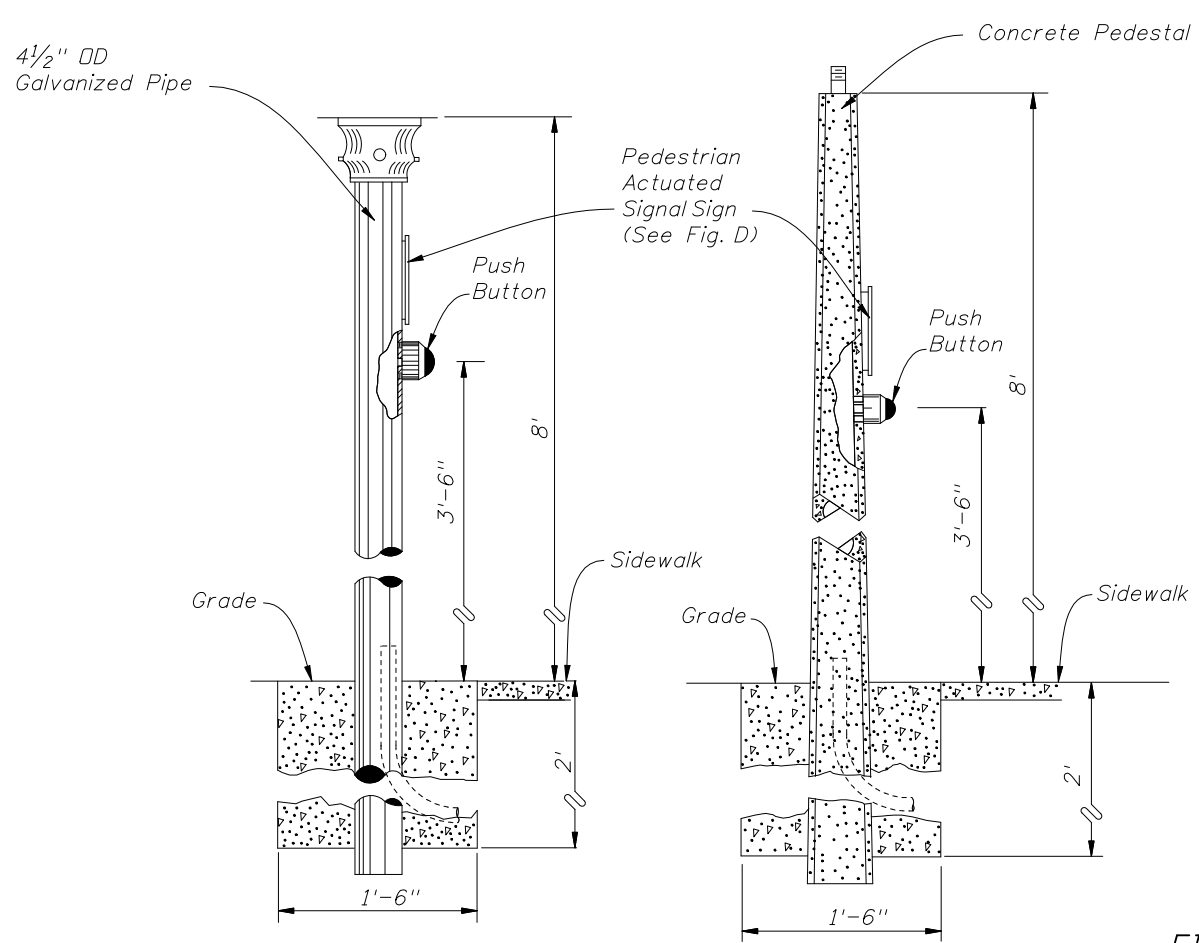


FIGURE B  
PEDESTAL STATION  
DETECTOR STATION

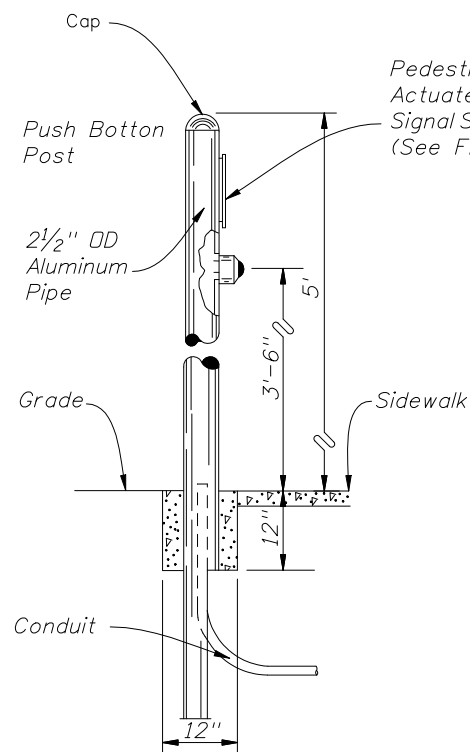
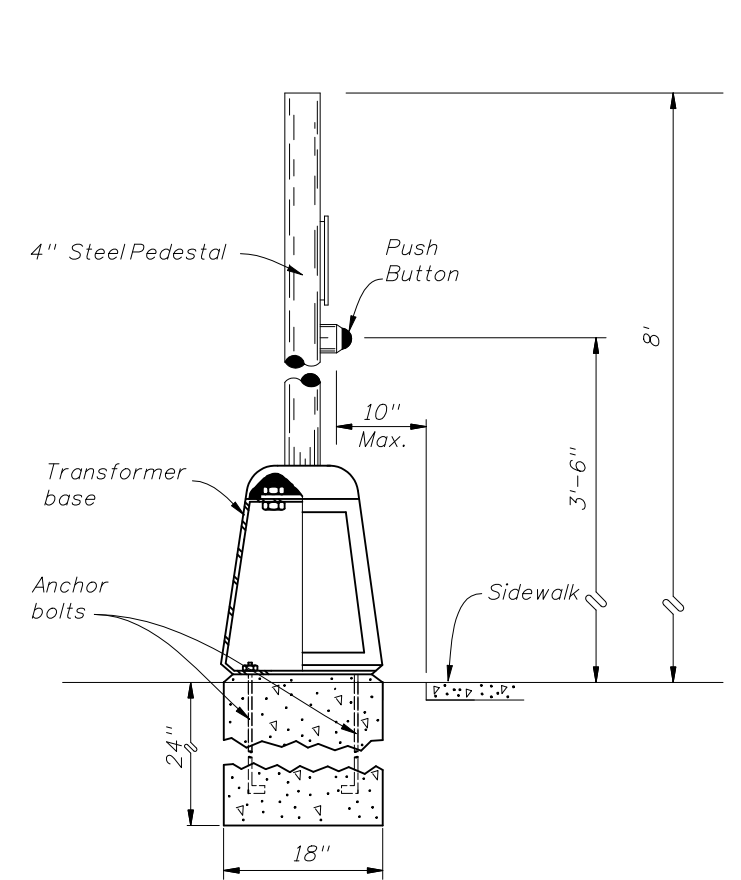


FIGURE C  
POST DETECTOR STATION  
DETECTOR STATION

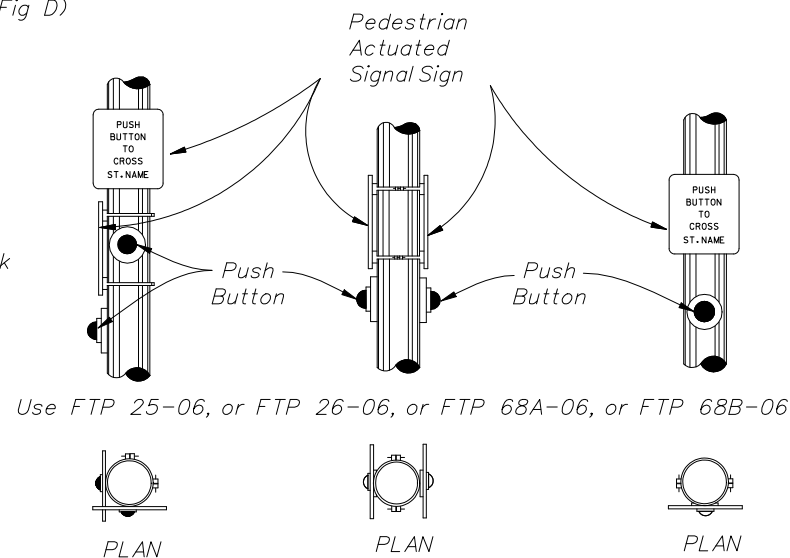


FIGURE D

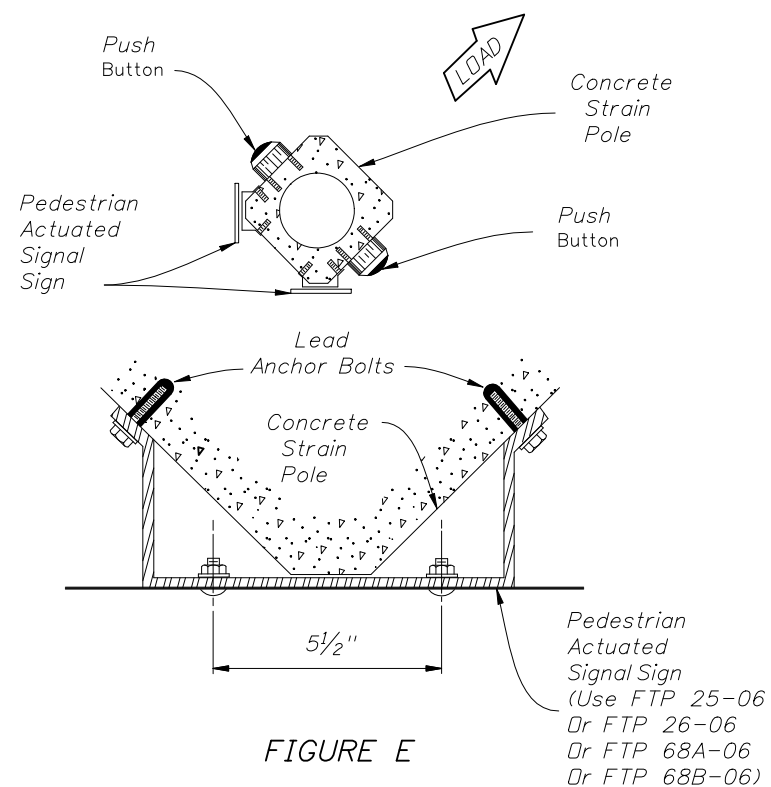


FIGURE E

Notes:

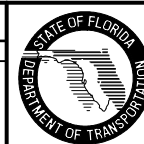
1. Signs shall be mounted above detectors, explaining their purpose and use.
2. The positioning of pedestrian push button should clearly indicate which crosswalk signal is actuated by each push button.
3. Push buttons and signs are to be mounted in accordance with Standard Specifications, section 665.
4. Meet all grounding requirements of Section 620 of the Standard Specifications.

Note To Designers:

The designer should ensure the 10" distance in Figure A & B is maintained. This distance can vary depending on post or pedestal type or whether a frangible base is used and sidewalk configuration.

REVISIONS

DATE	BY	DESCRIPTION	DATE	BY	DESCRIPTION
09/18/07	L.W.	Dimensions revised on FIGURE A and FIGURE B.			



2008 Interim Design Standard

PEDESTRIAN DETECTOR  
ASSEMBLY INSTALLATION DETAILS

Interim Date	Sheet No.
01/01/08	1 of 2
Index No.	
17784	