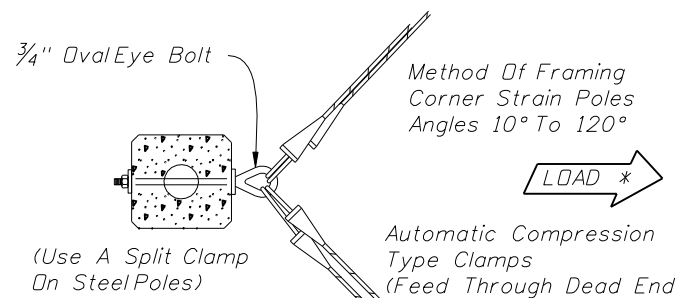
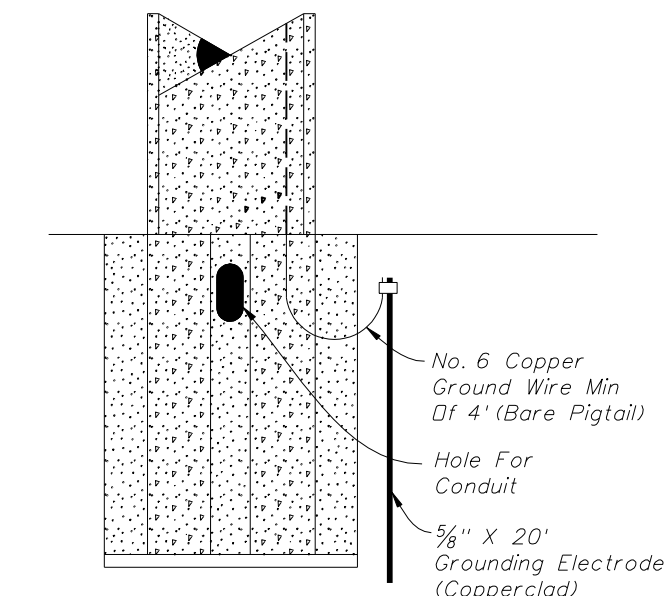


RETROFIT INSTALLATION

Note: Clamp location shall be adjusted to compensate for reduced sag and vertical clearance to bottom of signal head.

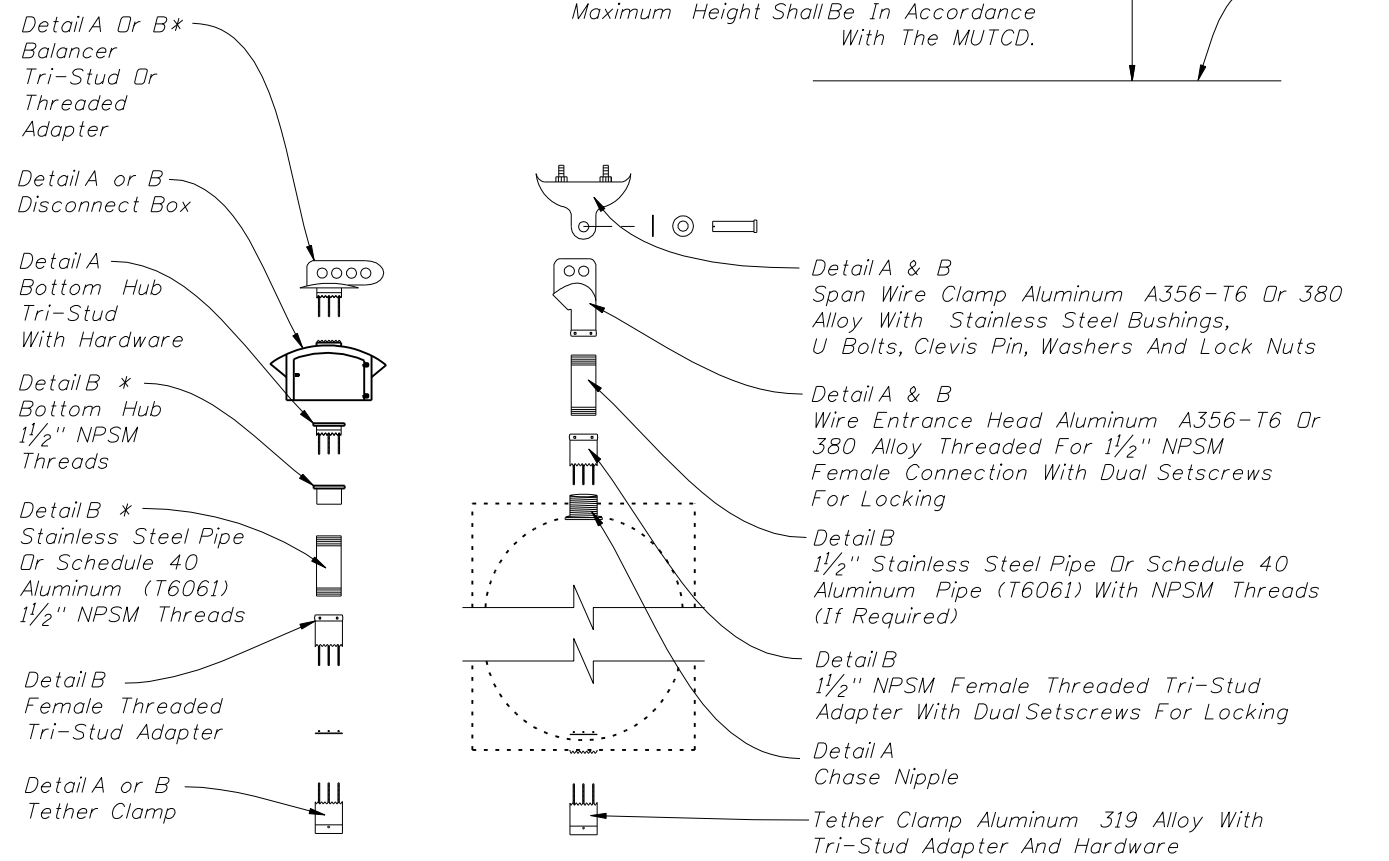


* The load face of pole shall be perpendicular to load.



**PRESTRESSED CONCRETE POLE
NEW CONSTRUCTION**

- Notes:
1. With the approval of the resident engineer, the service head hole for joint use poles may be drilled by the utility company at an angle of 90° but not less than 45° to the face of the pole.
 2. Lashing wire should normally be used for distances of 12' or greater.
 3. All hardware for signal attachment shall be stainless steel.
 4. Meet all grounding requirements of Section 620 of the Standard Specifications.



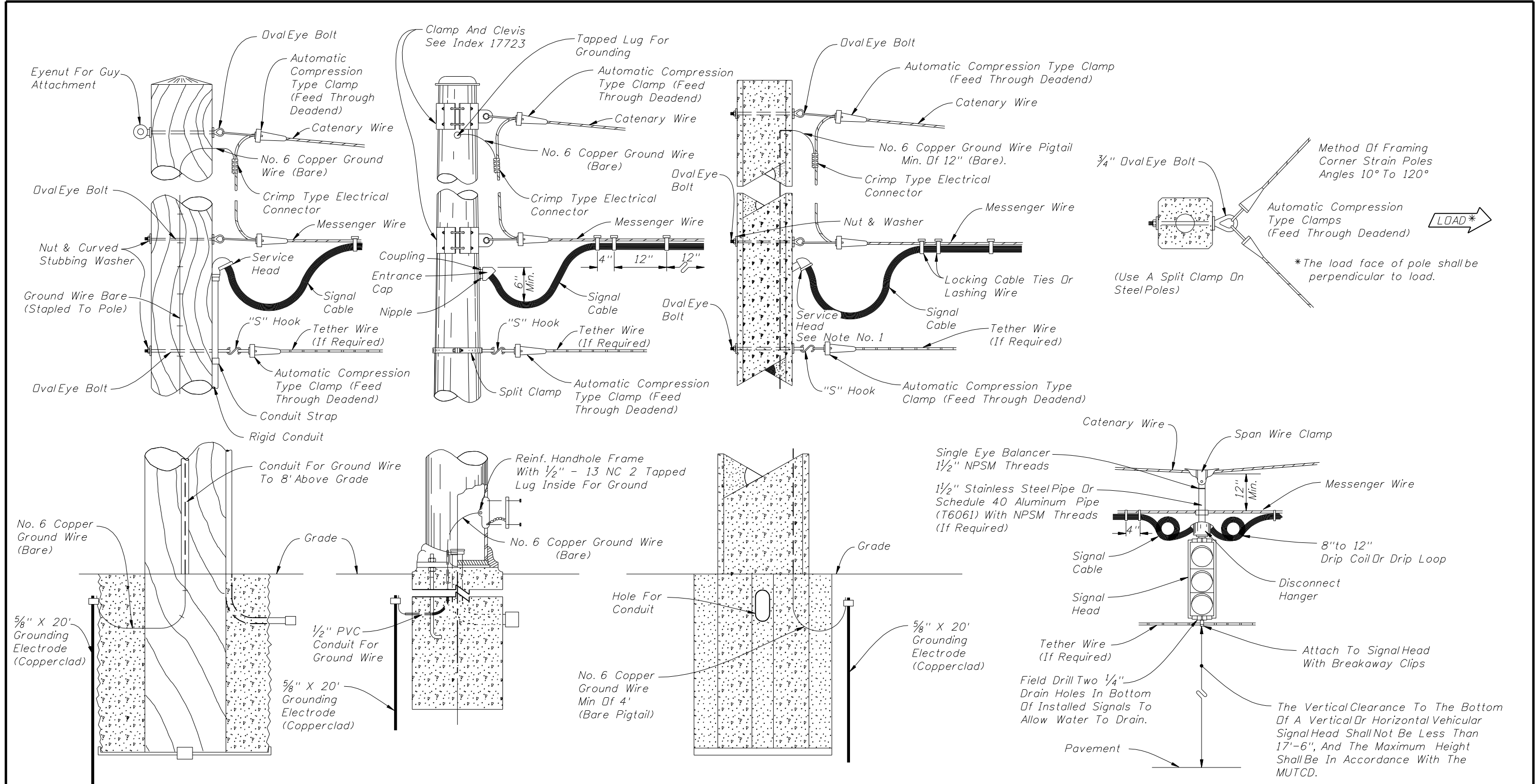
The Vertical Clearance To The Bottom Of A Vertical Or Horizontal Vehicular Signal Head Shall Not Be Less Than 17'-6", And The Maximum Height Shall Be In Accordance With The MUTCD.

Field Drill Two 1/4" Drain Holes In Bottom Of Installed Signals To Allow Water To Drain

* For long pipe hangers a wire entrance head may be substituted for balancer and the drop pipe installed above the disconnect box.

SINGLE POINT ATTACHMENT

REVISIONS						STATE OF FLORIDA DEPARTMENT OF TRANSPORTATION	2008 Interim Design Standard	Interim Date 07/01/08	Sheet No. 1 of 2
DATE	BY	DESCRIPTION	DATE	BY	DESCRIPTION				
07/01/08	L.W.	Schedule 40 Aluminum Pipe (T6061) Added As Alternate To Stainless Steel Pipe In Signal Head Detail Notes.				<p align="center">SIGNAL CABLE & SPAN WIRE INSTALLATION DETAILS</p>	Index No. 17727		




Notes: **WOOD POLE** **STEEL POLE** **PRESTRESSED CONCRETE POLE**

1. With the approval of the resident engineer, the service head hole for joint use poles may be drilled by the utility company at an angle of 90° but not less than 45° to the face of the pole.
2. Lashing wire should normally be used for distances of 12' or greater.
3. The overlapped connection of adjustable hangers shall use a minimum of 2 bolts with a minimum spacing of 2" between bolts.
4. Meet all grounding requirements of Section 620 of the Standard Specifications.

TWO POINT ATTACHMENT

REVISIONS				DATE		BY		DESCRIPTION	
DATE	BY	DESCRIPTION	DATE	BY	DESCRIPTION	DATE	BY	DESCRIPTION	DESCRIPTION
06/20/08	L.W.	Schedule 40 Aluminum Pipe (T6061) Added AS Alternate To Stainless Steel Pipe On Signal Head Detail Notes.							



STATE OF FLORIDA
DEPARTMENT OF TRANSPORTATION

2008 Interim Design Standard

**SIGNAL CABLE & SPAN WIRE
INSTALLATION DETAILS**

Interim Date	Sheet No.
07/01/08	2 of 2
Index No.	
17727	