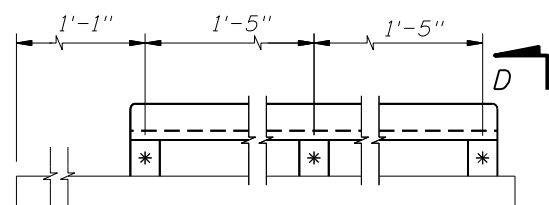


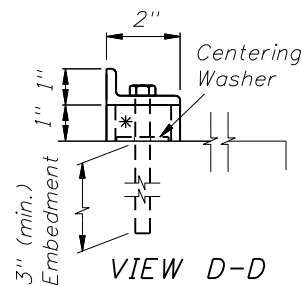
PLAN

Call Box Attachment To Slab  
As Per Manufacturer's Recommendation.



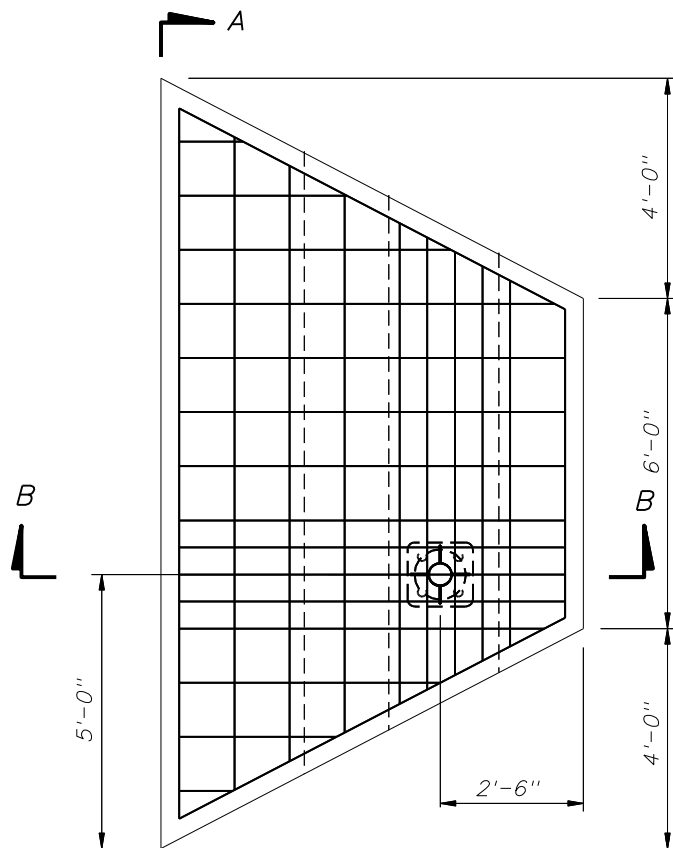
SECTION C-C

2" x 1" x 1/4" Galv. Angle And  
3-3/8" φ x 5" Galvanized Steel Expansion  
Anchor Bolt With 3" Min. Embedment

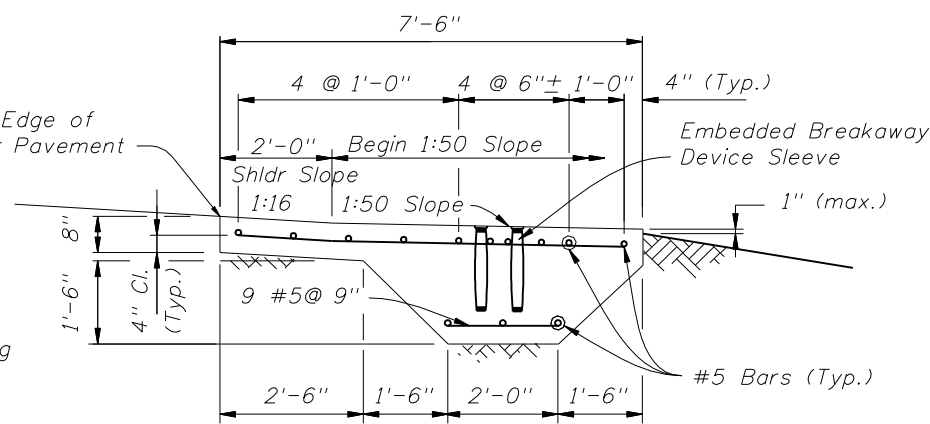


VIEW D-D

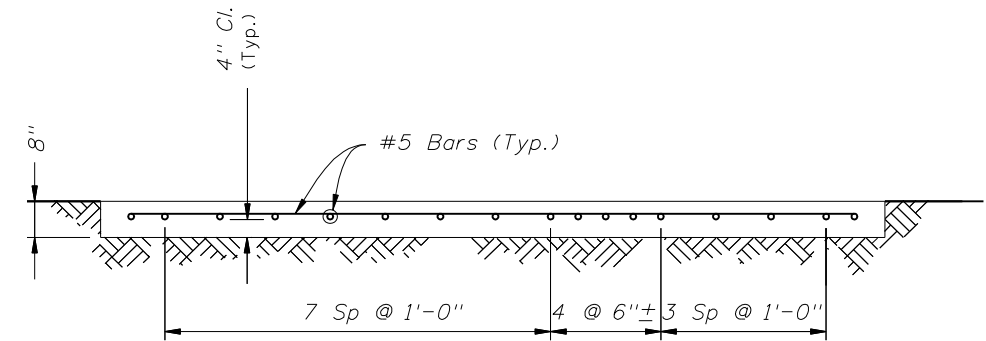
\* 1 1/2" φ x 1" High  
Galvanized Steel Pipe Spacer



SECTION A-A



SECTION B-B



SECTION A-A

MOTORIST AID CALL BOX CONCRETE PAD QUANTITIES

Concrete : 3.5 c.y. (each)  
Reinforcing Steel: 243 lb (each)

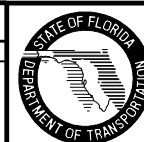
GENERAL NOTES

1. Design Specifications: AASHTO Standard Specifications For Highway Bridges (Current Edition and approved revisions thereto).
2. Concrete: Concrete strength shall be Class I ( $f'c=3,000$  psi).
3. Reinforcing Steel: Reinforcing Steel shall conform to ASTM A615, Grade 60.
4. Payment: Concrete Pad and Foundation shall be included in the contract unit price of call box assembly or terminal. It shall also include all labor, materials, and installation of embedded breakaway device sleeves, and miscellaneous galvanized steel for wheel chair stop and attachments.
5. Breakaway Device shall be paid for under Call Box Assembly.

WHEEL CHAIR STOP DETAIL

REVISIONS

DATE	BY	DESCRIPTION	DATE	BY	DESCRIPTION
11/05/08	C.H.	Note 2 Class II Concrete Changed to Class I Concrete. Note 4 Changed for payment of Concrete, Reinforcing steel and additional items.			



2008 Interim Design Standard

MOTORIST AID CALL BOX

Interim Date	Sheet No.
01/01/09	3 of 3
Index No.	
17600	