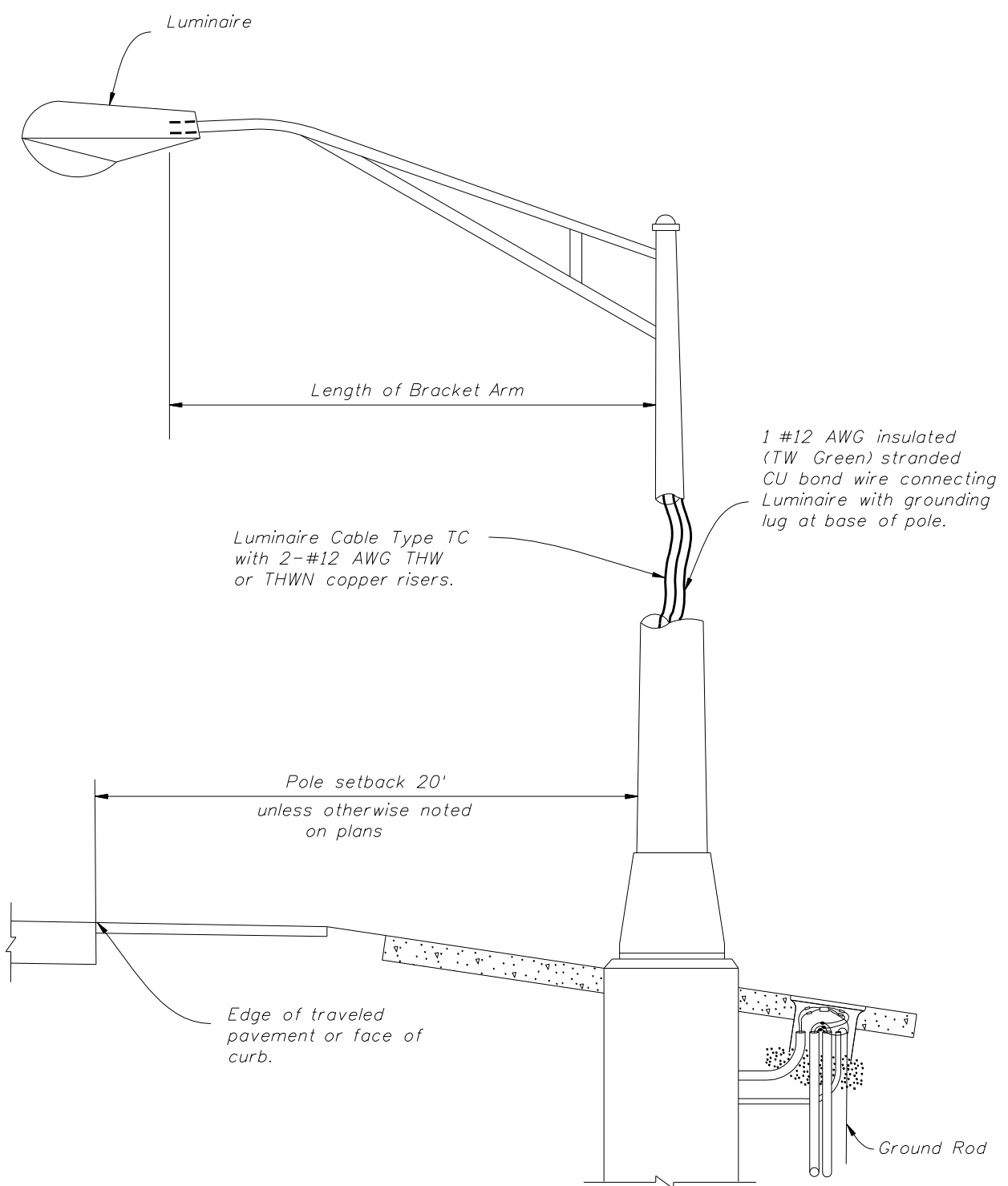


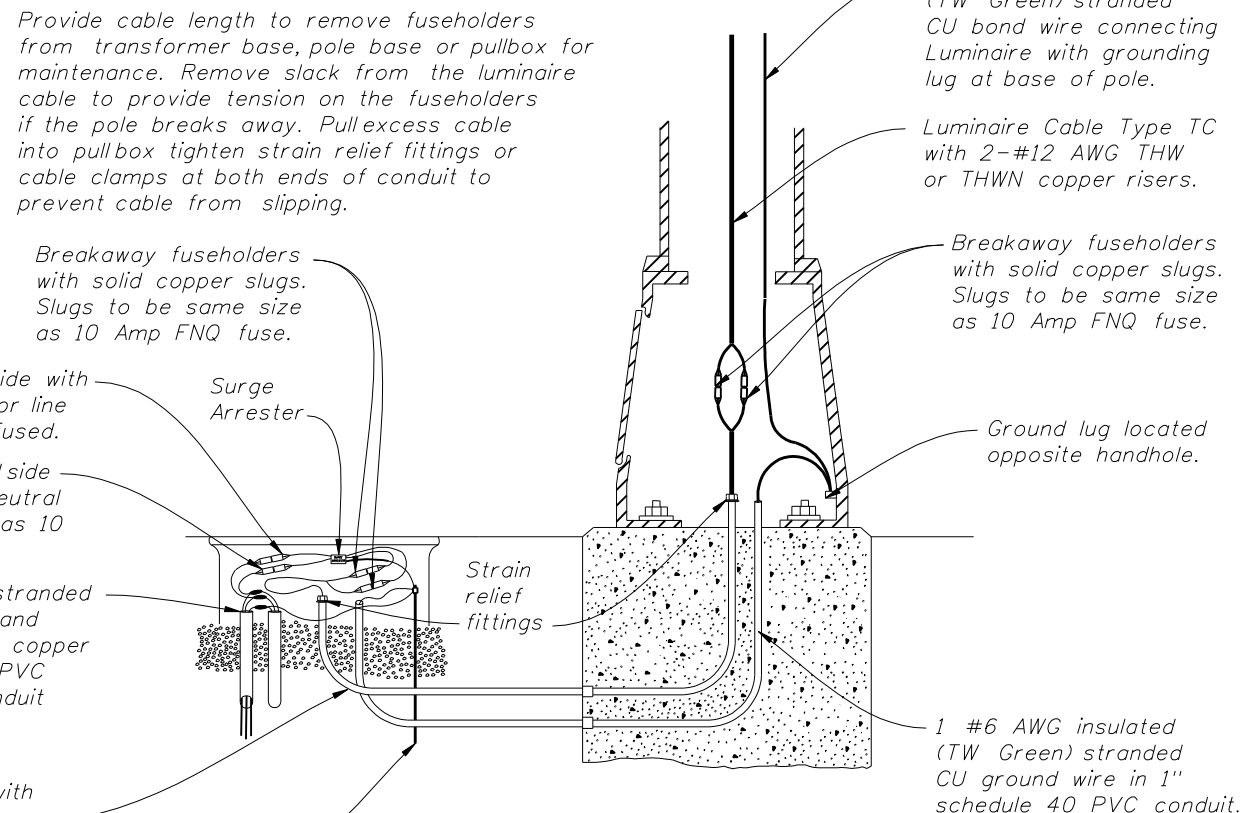
**WIRING DIAGRAM**

**NOTES:**

1. Barrier wall or bridge mounted poles: The wiring shall be in accordance with Section 992 of the Standard Specifications.



**METAL POLE DETAIL**

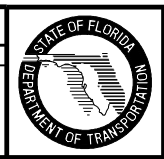


**METAL POLE WIRING DETAIL**

U.L. approved Ground Rod 5/8" diameter 20' long copper clad with approved ground connection (At all pull boxes)

**WIRING DETAILS**

DATE		BY		DESCRIPTION	
11/05/08	C.H.			Concrete pole detail deleted from sheet, remaining details rearranged note added to METAL POLE DETAIL AND WIRING DIAGRAM.	



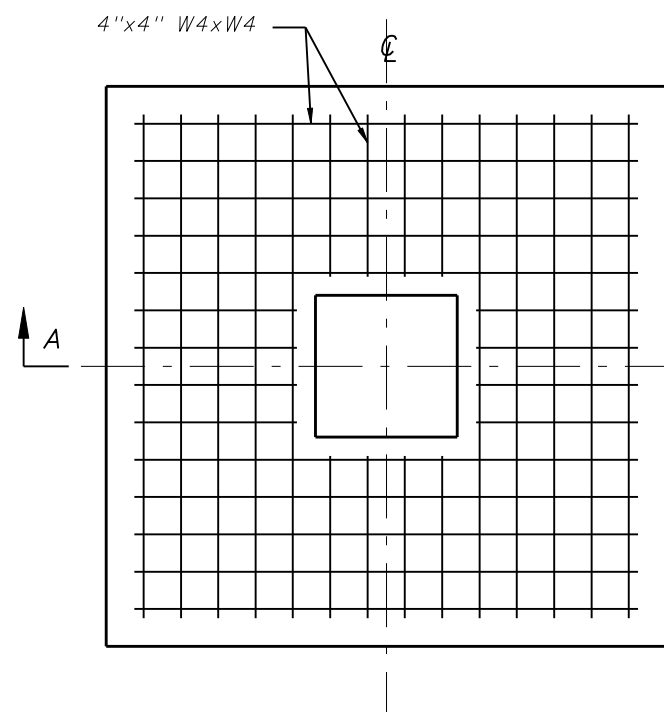
2008 Interim Design Standard

**CONVENTIONAL LIGHTING**

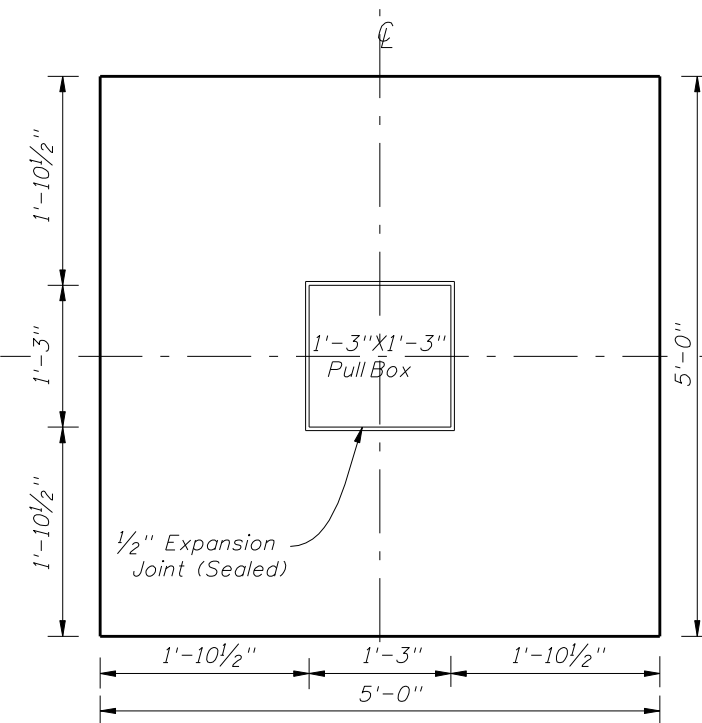
Interim Date: 01/01/09

Sheet No.: 1 of 3

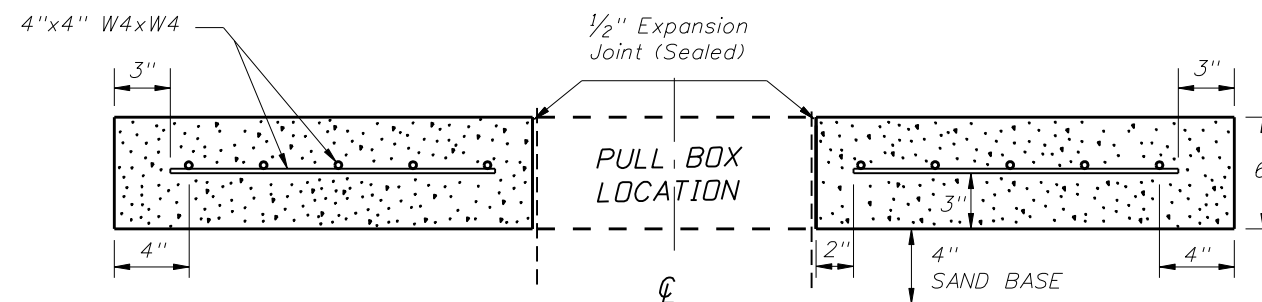
Index No.: 17500



REINFORCEMENT LAYOUT



SLAB DIMENSIONS




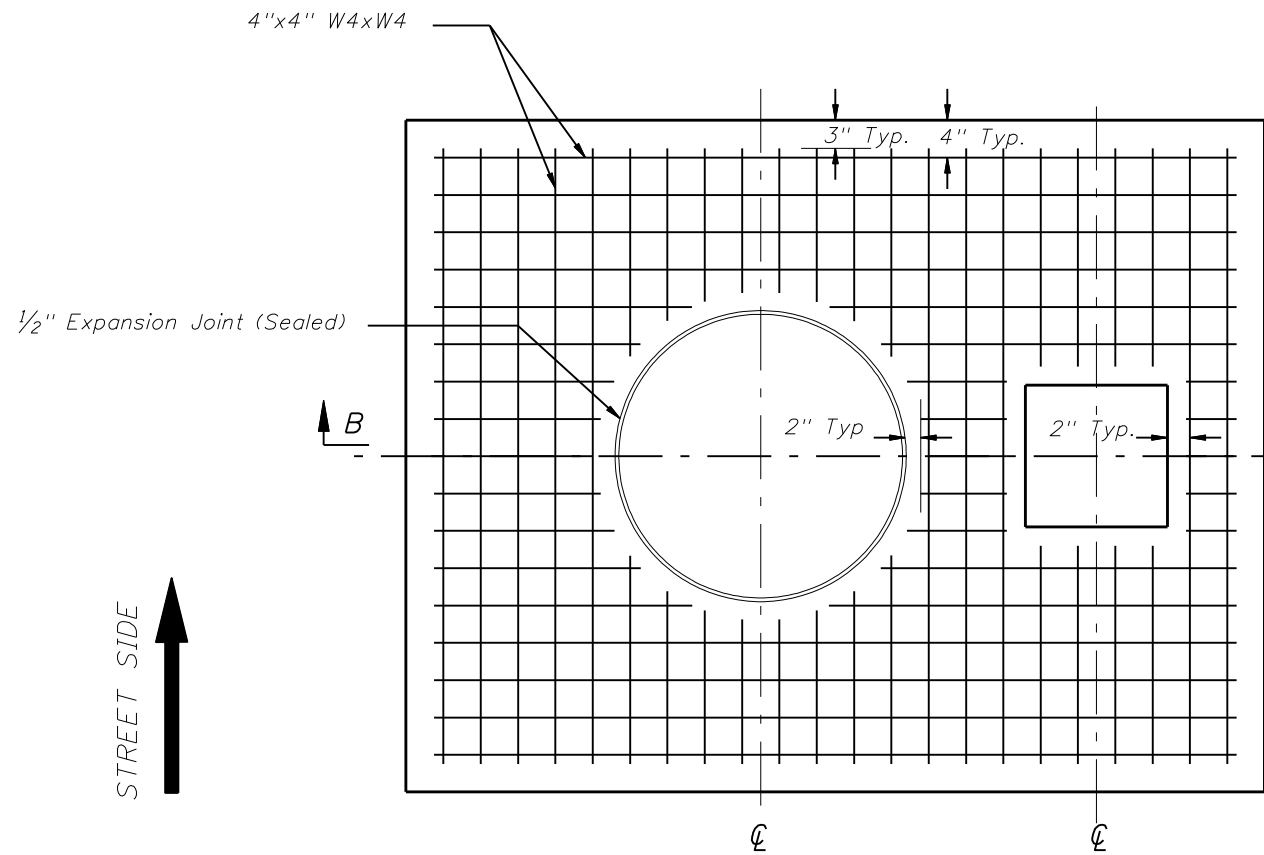
SECTION A-A

NOTES:

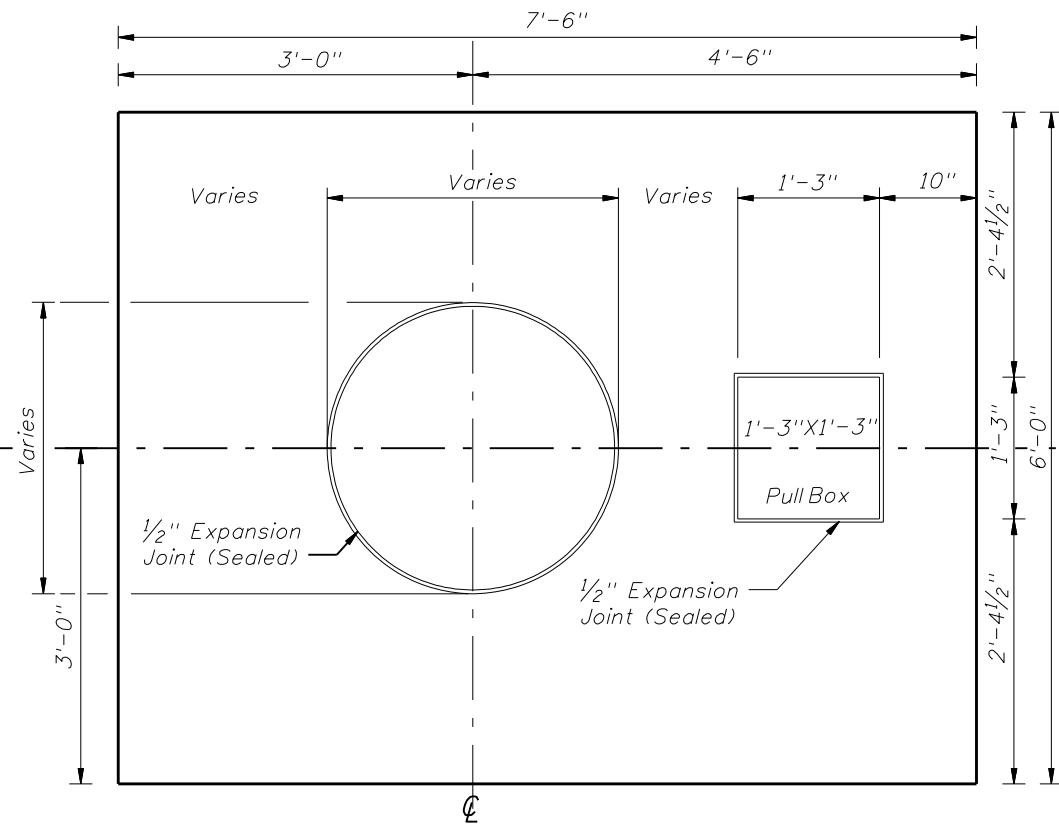
1. Use clean free draining sand less than 5% passing No. 200 sieve for base (4").
2. Welded wire fabric shall meet the requirements of ASTM A185.
3. Concrete shall be Class NS with a minimum strength at 28 days of  $f'c=2.5$  ksi.
4. Outside edges of slab shall be cast against formwork.
5. The pull box shown is 1'-3" x 1'-3"; others approved under Section 635 of the Standard Specifications may be used.
6. Slabs to be placed around all Poles and Pull Boxes in rural allocations. In urban areas or where space is limited slab dimensions may be adjusted as shown in the plans.
7. Concrete and reinforcing for slabs around poles and pull boxes shall be included in the price for pull box or pole.
8. The 1/2" thick expansion joint between the pole shaft and slab and the pull box and slab shall be sealed with a hot poured elastic joint sealer.

SLAB DETAILS FOR INTERMEDIATE PULLBOX LOCATIONS

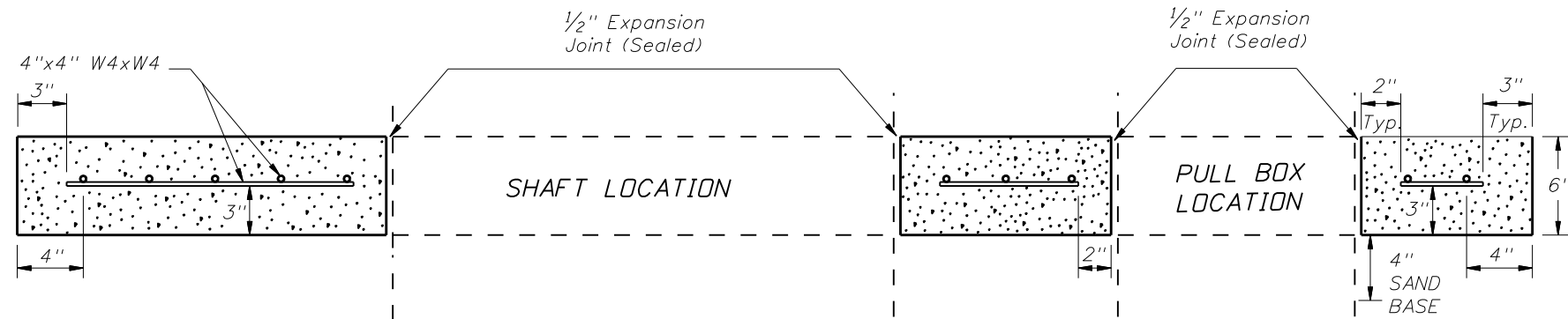
REVISIONS							2008 Interim Design Standard		Interim Date	Sheet No.
DATE	BY	DESCRIPTION	DATE	BY	DESCRIPTION		CONVENTIONAL LIGHTING		01/01/09	2 of 3
11/05/08	C.H.	Note 7 class I concrete (Miscellaneous) revised to Concrete and reinforcing for slabs around poles and pull boxes shall be included in the price for pull box or pole.							Index No.	17500



REINFORCEMENT LAYOUT



SLAB DIMENSIONS



SECTION B-B

NOTES:

1. Use clean free draining sand less than 5% passing No. 200 sieve for base (4").
2. Welded wire fabric shall meet the requirements of ASTM A185.
3. Concrete shall be Class NS with a minimum strength at 28 days of  $f'c=2.5$  ksi.
4. Outside edges of slab shall be cast against formwork.
5. The pull box shown is 1'-3" x 1'-3"; others approved under Section 635 of the Standard Specifications may be used.
6. Slabs to be placed around all Poles and Pull Boxes in rural locations. In urban areas or where space is limited slab dimensions may be adjusted as shown in the plans.
7. Concrete and reinforcing for slabs around poles and pull boxes shall be included in the price for pull box or pole.
8. The 1/2" thick expansion joint between the pole shaft and slab and the pull box and slab shall be sealed with a hot poured elastic joint sealer.

SLAB DETAILS FOR POLE AND PULL BOX LOCATIONS

REVISIONS					
DATE	BY	DESCRIPTION	DATE	BY	DESCRIPTION
11/05/08	C.H.	Note 7 Class I Concrete (Miscellaneous) revised to Concrete and reinforcing for slabs around poles and pull boxes shall be included in the price for pull box or pole.			

