

Z3x2.69x2.33 Alum. Wind Beams  
See Table For Number

16x4.69 or Z4x3.13x3.58 Aluminum  
Hangers See Table For Number

NOTE:  
If the Sign Panels are deeper  
than 10'-0", a horizontal panel  
splice is allowed at an interior Z  
support, shop drawings shall be  
required. Minimum panel section  
width = 2'-6".

Number & Location Of Panel  
Splices To Be Determined By  
The Sign Face Supplier. See  
Detail Of Sign Face Splice.

Sign Face 1/8" Thick

2" (Typ.)

Equal Spacing For Two, Three,  
Four Or Five Vertical Hangers\*

Length L

Two Hangers = 21% L  
Three Hangers = 14.5% L  
Four Hangers = 10.7% L  
Five Hangers = 8.5% L

Equal Spacing For Two,  
Three, Four Or Five  
Horizontal Wind Beams

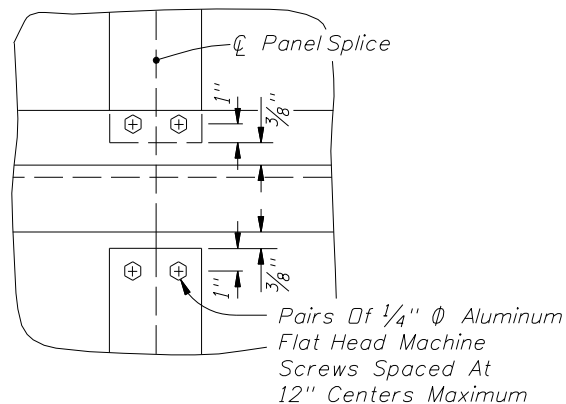
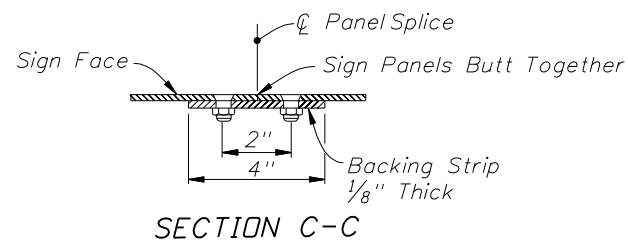
Depth D

Two Wind Beams = 21% D  
Three Wind Beams = 14.5% D  
Four Wind Beams = 10.7% D  
Five Wind Beams = 8.5% D

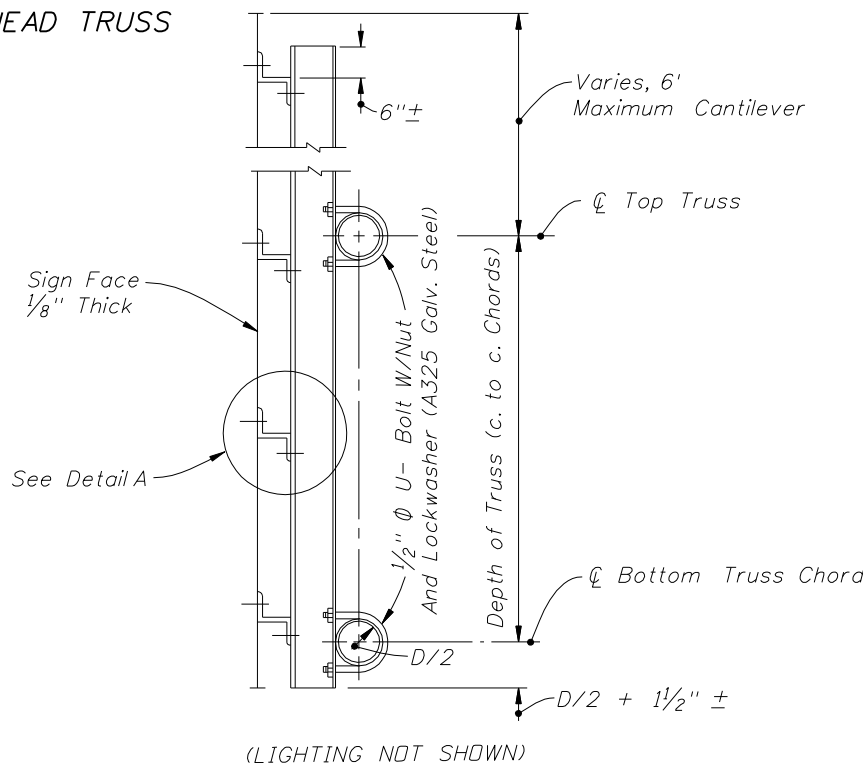
Wind M.P.H.	No. Beams	Max. Depth	Number Of 16x4.69 or Z4x3.13x3.58 Vertical Hanger Beams For Sign Length			
			2 Hangers Sign Length	3 Hangers Sign Length	4 Hangers Sign Length	5 Hangers Sign Length
150	2	5'-0"	0 to 15'-0"	15'-1" to 30'-0"	30'-1" to 45'-0"	
150	3	8'-6"	0 to 15'-0"	15'-1" to 30'-0"	30'-1" to 45'-0"	
150	4	11'-6"	0 to 13'-0"	13'-1" to 18'-3"	18'-4" to 24'-9"	24'-10" to 31'-4"
150	5	14'-0"	0 to 13'-0"	13'-1" to 18'-3"	18'-4" to 24'-9"	24'-10" to 31'-4"
130	2	5'-3"	0 to 15'-0"	15'-1" to 30'-0"	30'-1" to 45'-0"	
130	3	8'-10"	0 to 15'-0"	15'-1" to 22'-3"	22'-4" to 30'-0"	30'-1" to 45'-0"
130	4	12'-0"	0 to 15'-0"	15'-1" to 22'-3"	22'-4" to 30'-0"	30'-1" to 38'-0"
130	5	15'-0"	0 to 11'-7"	11'-8" to 16'-4"	16'-5" to 22'-2"	22'-3" to 28'-0"
110	2	5'-6"	0 to 15'-0"	15'-1" to 30'-0"	30'-1" to 45'-0"	
110	3	9'-6"	0 to 15'-0"	15'-1" to 27'-3"	27'-4" to 37'-0"	37'-1" to 45'-0"
110	4	12'-9"	0 to 15'-0"	15'-1" to 27'-3"	27'-4" to 37'-0"	37'-1" to 45'-0"
110	5	16'-0"	0 to 14'-3"	14'-4" to 20'-0"	20'-1" to 27'-0"	27'-1" to 34'-3"

\*Note: Spacing of vertical hangers may be varied slightly or as necessary  
to clear the truss struts and diagonals at panel points.

TYPICAL SIGN FACE ELEVATION FOR OVERHEAD TRUSS

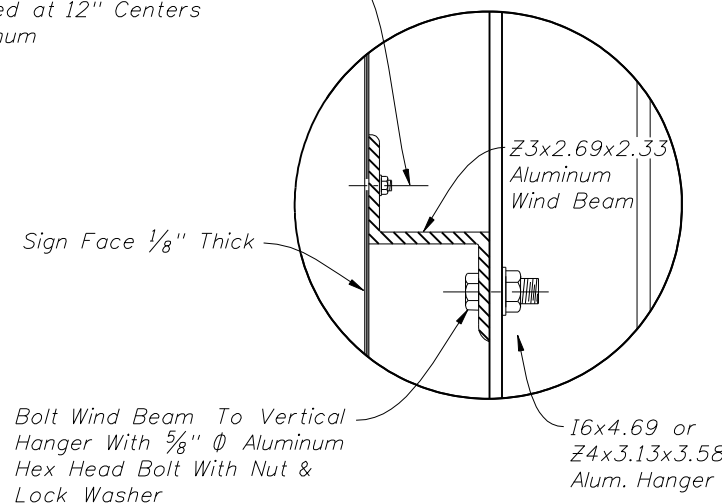


BACKING STRIP DETAIL



TYPICAL DETAIL OF SIGN & TRUSS CONNECTION

1/4" Ø Alum. Flat Head Machine  
Screws With Nuts And Lock  
Washers. Screws Shall Be  
Spaced at 12" Centers  
Maximum



DETAIL A

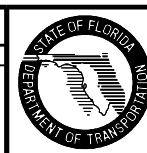
(Showing Attachment Of Sign Face  
Panel To Vertical Hanger Supports,  
Vertical I Shape Hanger As Shown,  
Z Shape Optional)

GENERAL NOTES

- (1) For "General Notes" covering Material Specifications see Index 11200.
- (2) Design based on 32 ft. maximum height to centroid of sign panel.
- (3) The Design Wind Speed shall conform to Wind Speed by County shown on Index 11200, Sheet 1 of 2.

DETAILS OF SIGN FACE & TRUSS CONNECTION

REVISIONS					
DATE	BY	DESCRIPTION	DATE	BY	DESCRIPTION
11/14/07	L.W.	130mph-3 beams-5 hangers table values change max value from 38'-0" to 45'-0" Detail A Changed wind beam to Vertical Hanger aluminum hex head connection bolt from 3/8" to 5/8"	11/14/07	L.W.	If the Sign Panels are deeper than 12' has been changed to deeper than 10'.
			6/1/08	C.H.	Added U-Bolt materialspec.



2008 Interim Design Standard

OVERHEAD SIGN STRUCTURES

Interim  
Date  
07/01/08

Sheet No.  
1 of 1

Index No.  
11300