

CROSS REFERENCES:

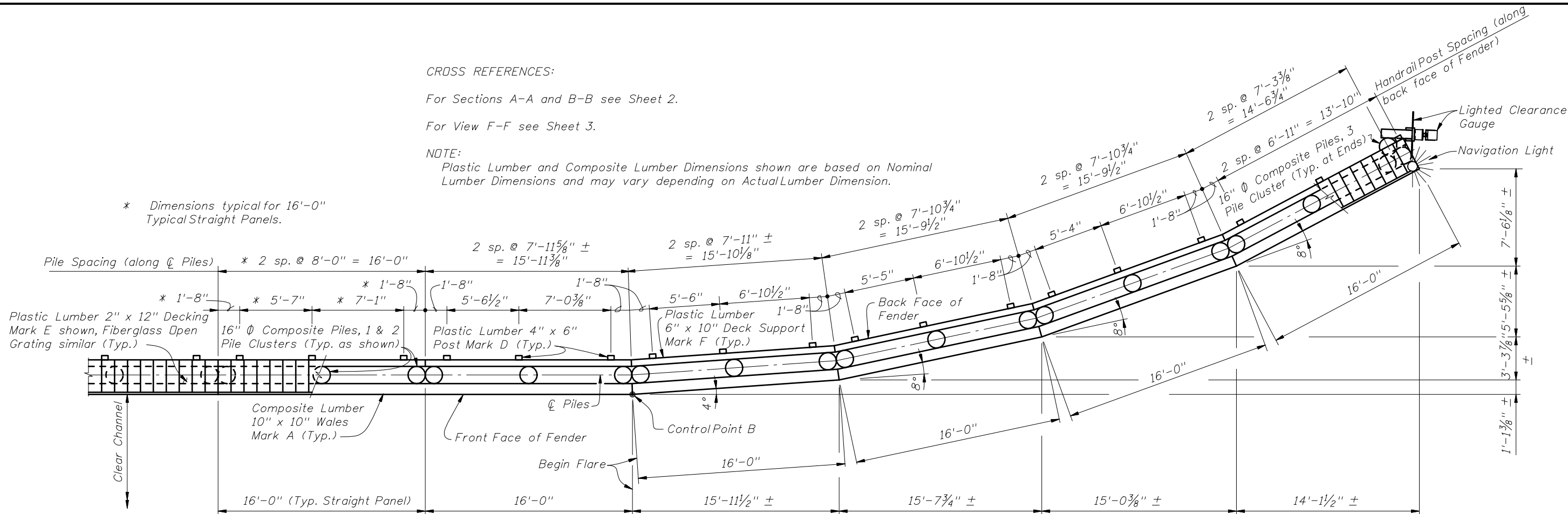
For Sections A-A and B-B see Sheet 2.

For View F-F see Sheet 3.

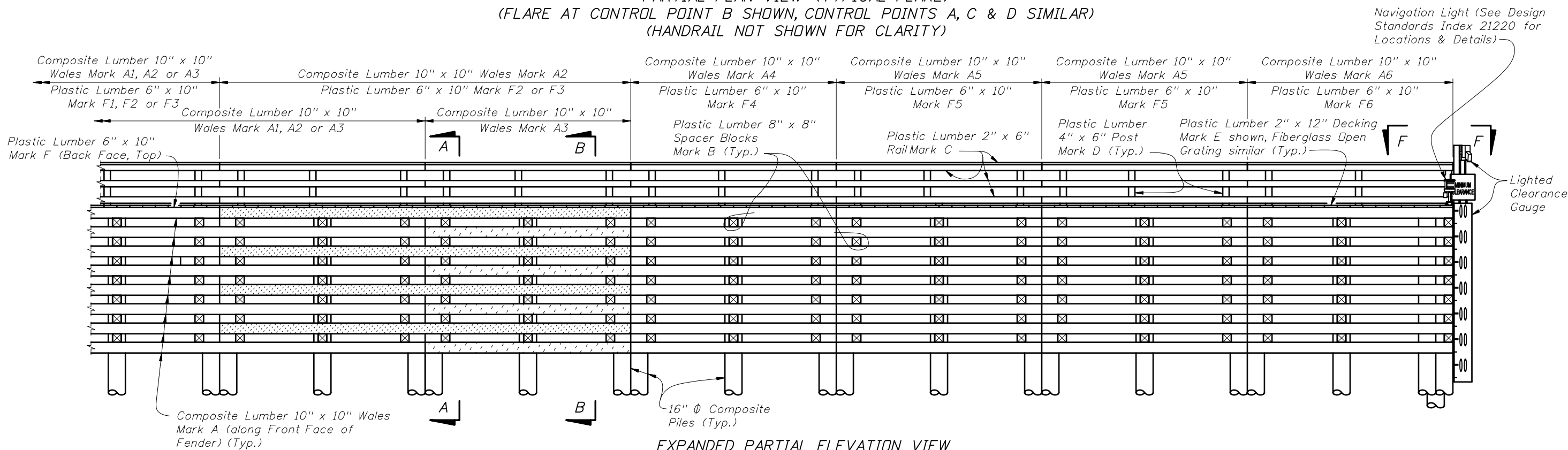
NOTE:

Plastic Lumber and Composite Lumber Dimensions shown are based on Nominal Lumber Dimensions and may vary depending on Actual Lumber Dimension.

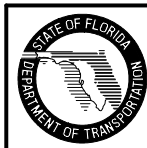
* Dimensions typical for 16'-0" Typical Straight Panels.



PARTIAL PLAN VIEW (TYPICAL FLARE)
(FLARE AT CONTROL POINT B SHOWN, CONTROL POINTS A, C & D SIMILAR)
(HANDRAIL NOT SHOWN FOR CLARITY)



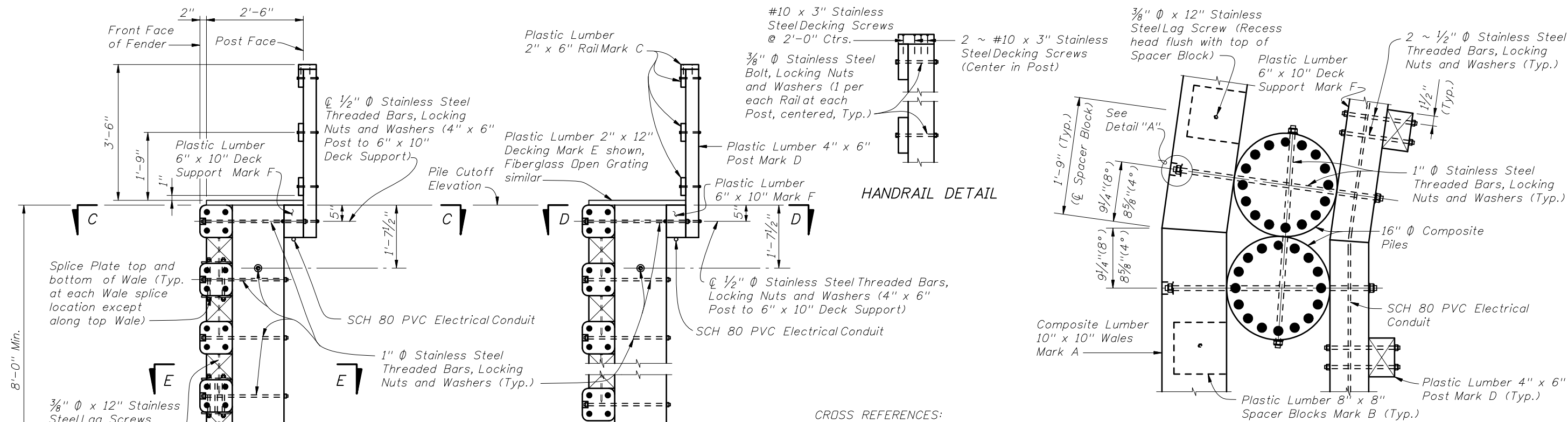
EXPANDED PARTIAL ELEVATION VIEW



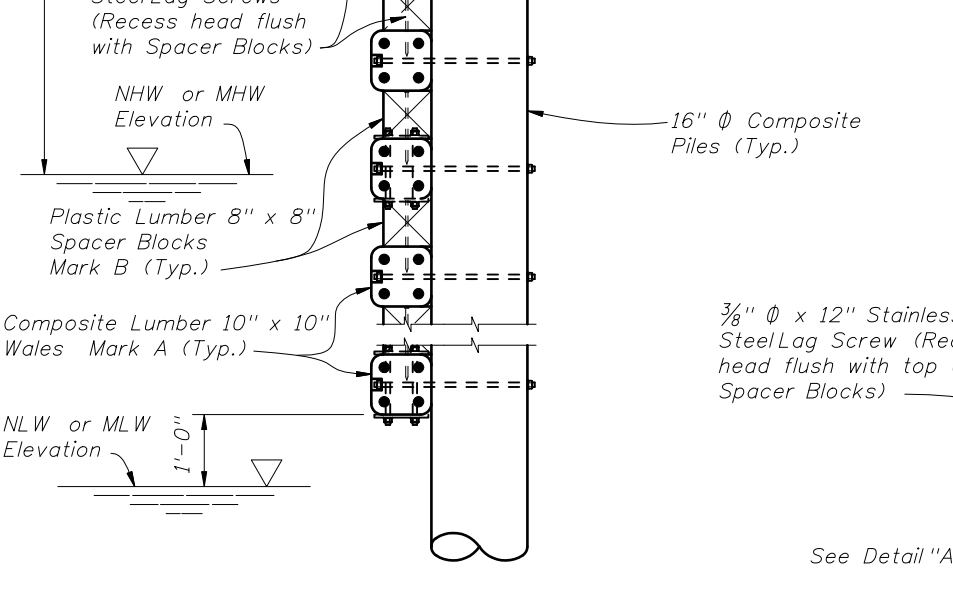
2008 FDOT Design Standards

FENDER SYSTEM - MEDIUM DUTY

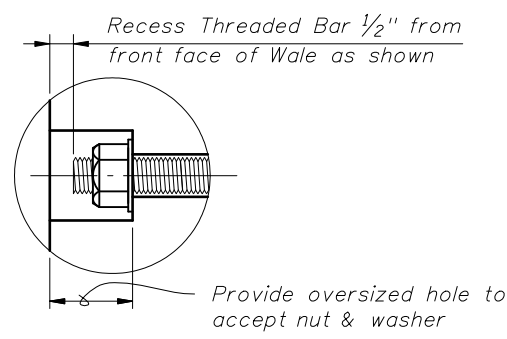
Last Revision	Sheet No.
01/01/06	1 of 5
Index No.	
21920	



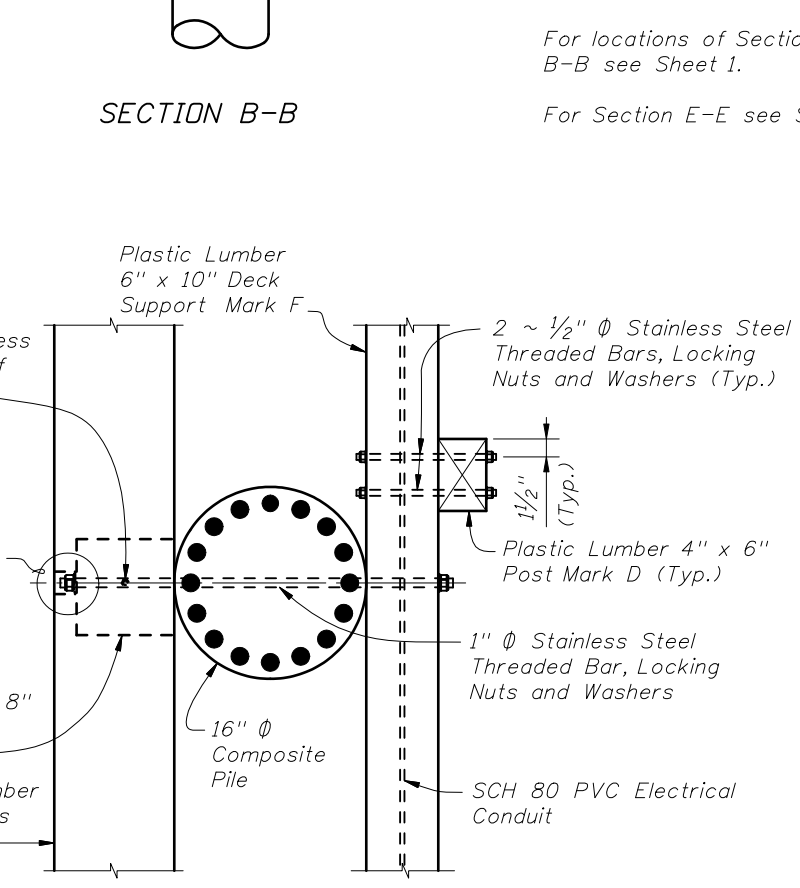
CROSS REFERENCES:
 For locations of Sections A-A and B-B see Sheet 1.
 For Section E-E see Sheet 3.



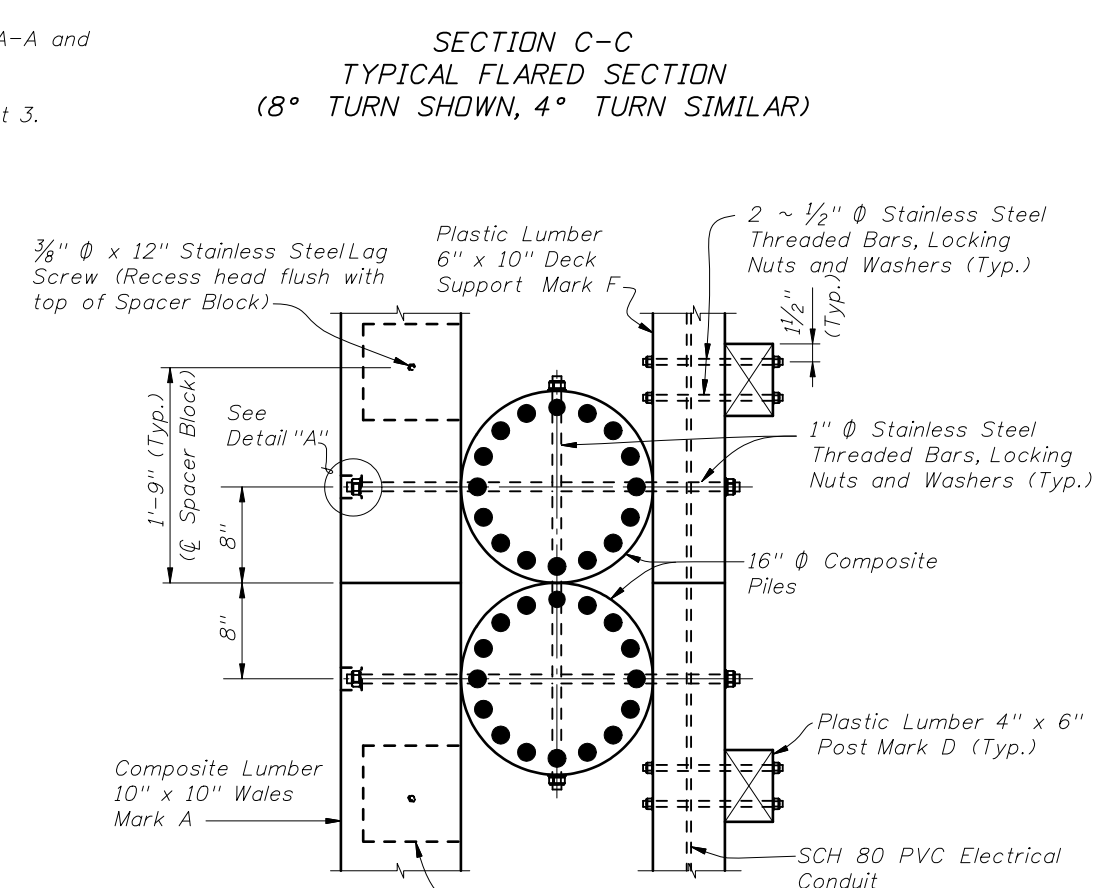
SECTION A-A



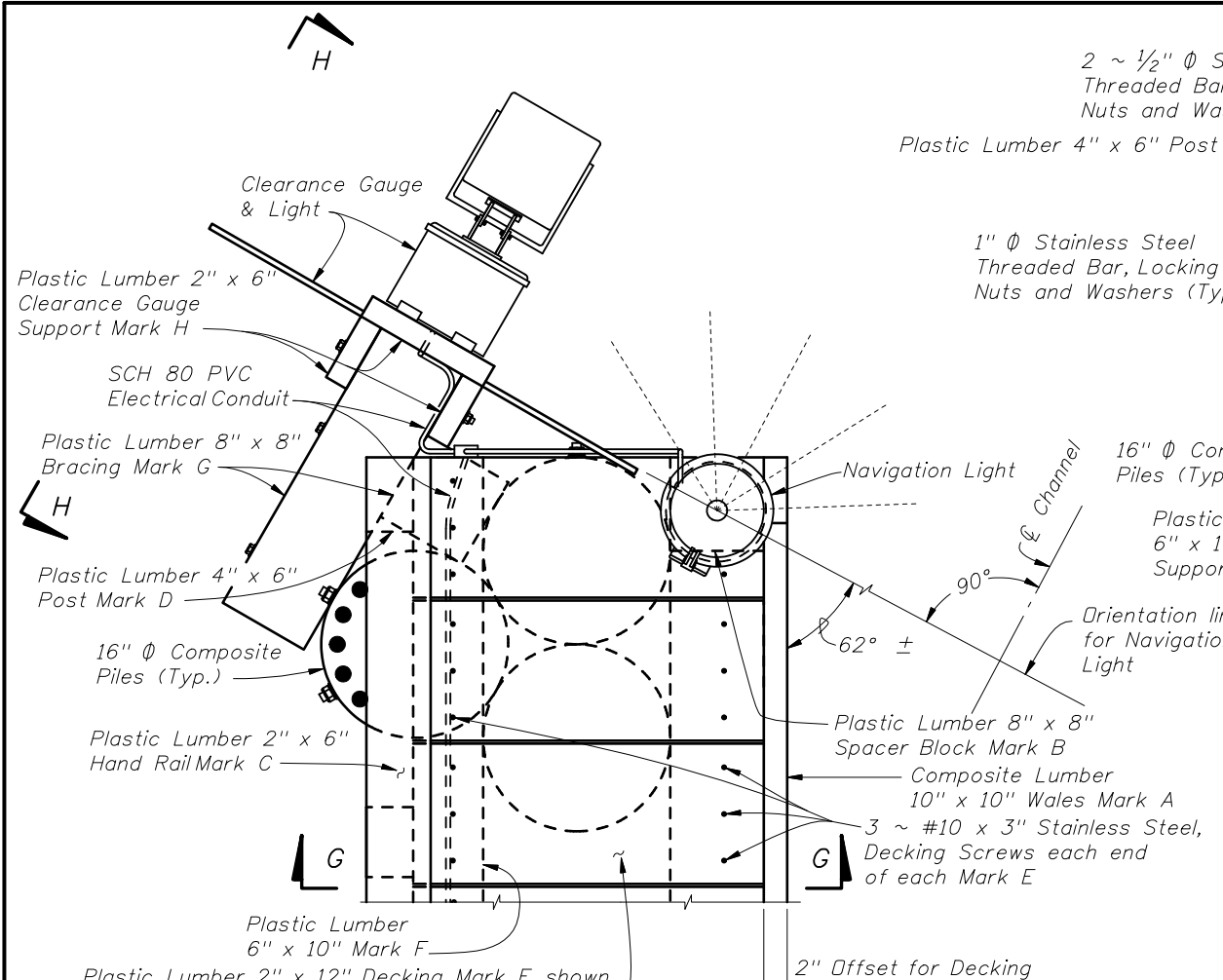
DETAIL "A"



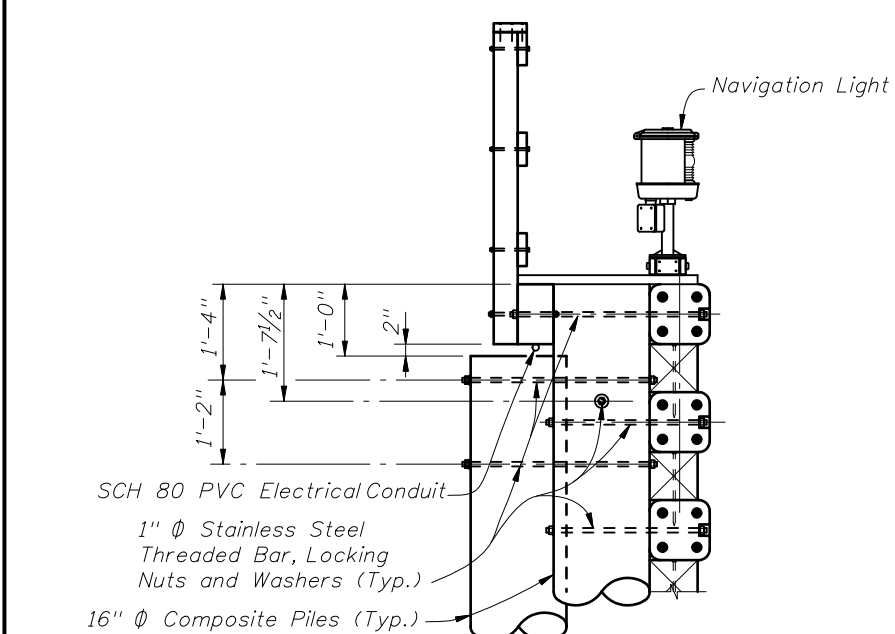
SECTION B-B
 TYPICAL AT INTERMEDIATE PILES



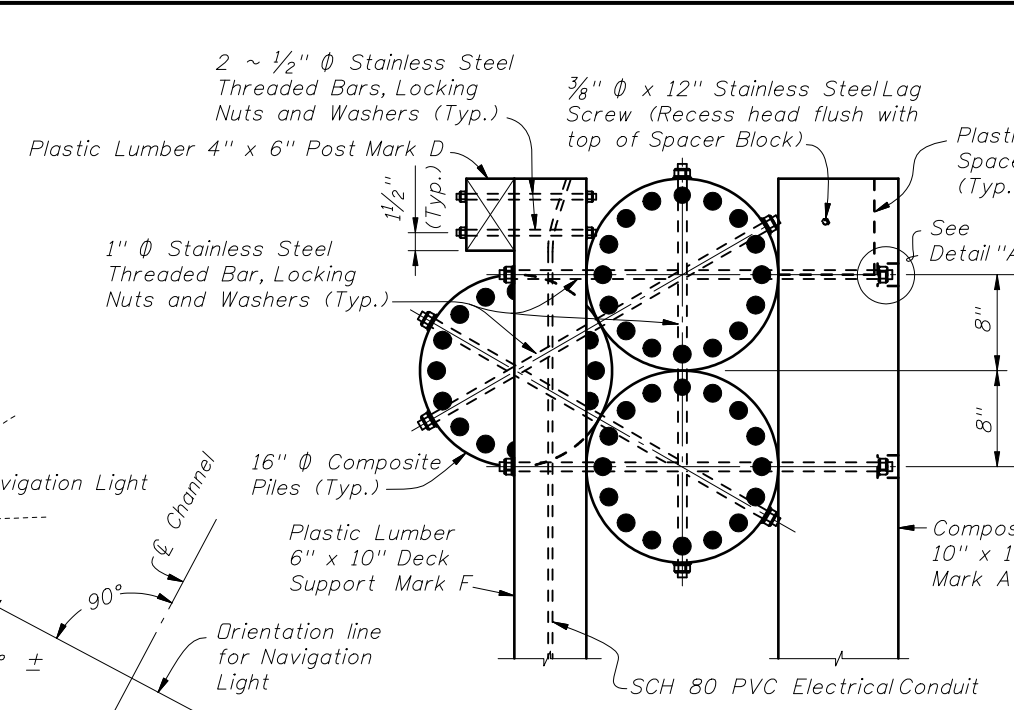
SECTION C-C
 TYPICAL STRAIGHT SECTION



VIEW F-F
(SHOWING FENDER END WITH CLEARANCE GAUGE)



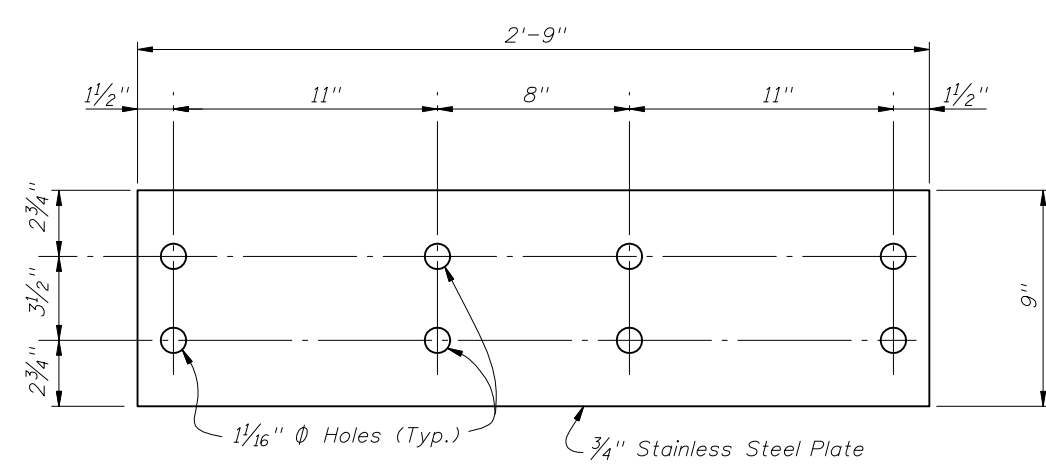
SECTION G-G
(CLEARANCE GAUGE NOT SHOWN FOR CLARITY)



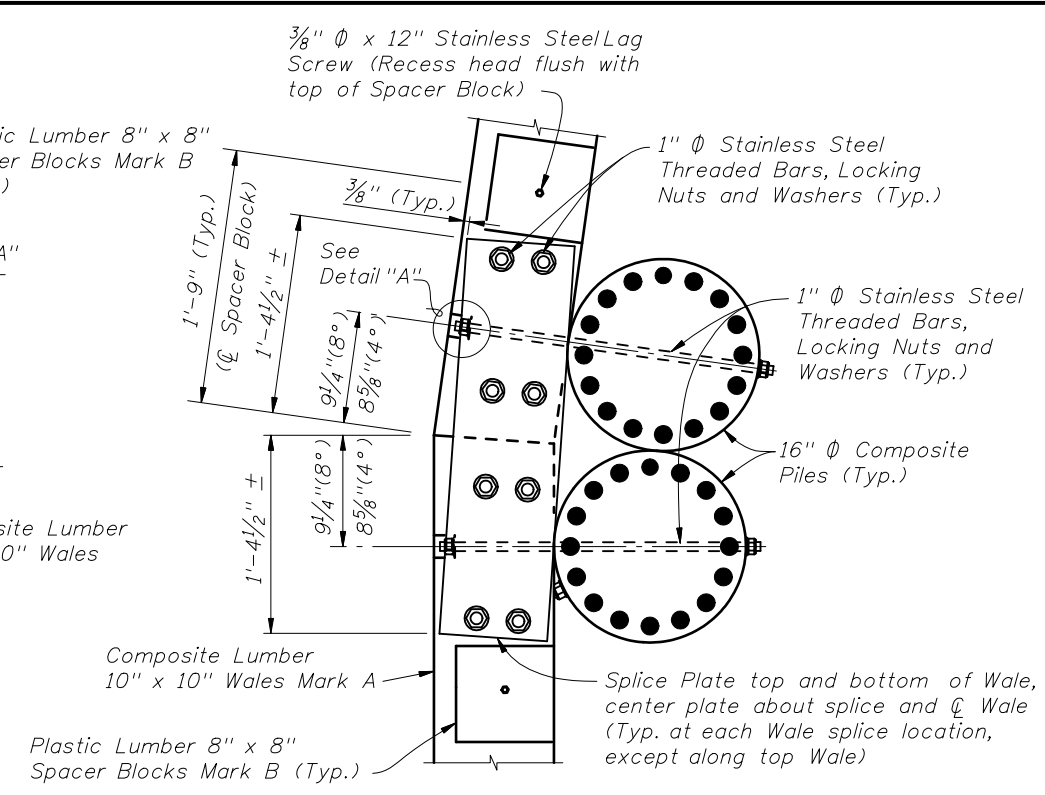
VIEW F-F
(SHOWING FENDER END; DECKING,
HANDRAIL AND CLEARANCE GAUGE
NOT SHOWN FOR CLARITY)

CROSS REFERENCES:

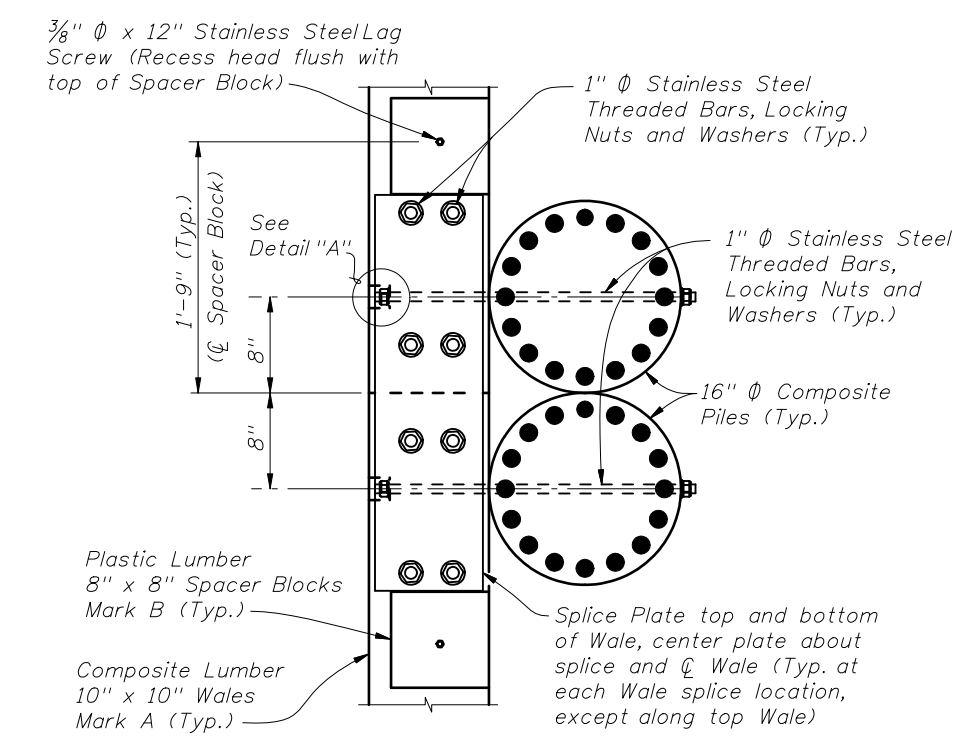
- For Navigation Lights and SCH 80 PVC Electrical Conduit Details see Design Standard Index 21220.
- For Clearance Gauge Details and View H-H see Sheet 4.
- For Detail "A" and location of Section E-E see Sheet 2.
- For location of View F-F see Sheet 1.



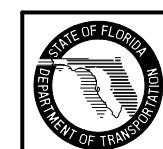
SPLICE PLATE DETAIL



SECTION E-E
TYPICAL FLARED SECTION
(8° TURN SHOWN, 4° TURN SIMILAR)



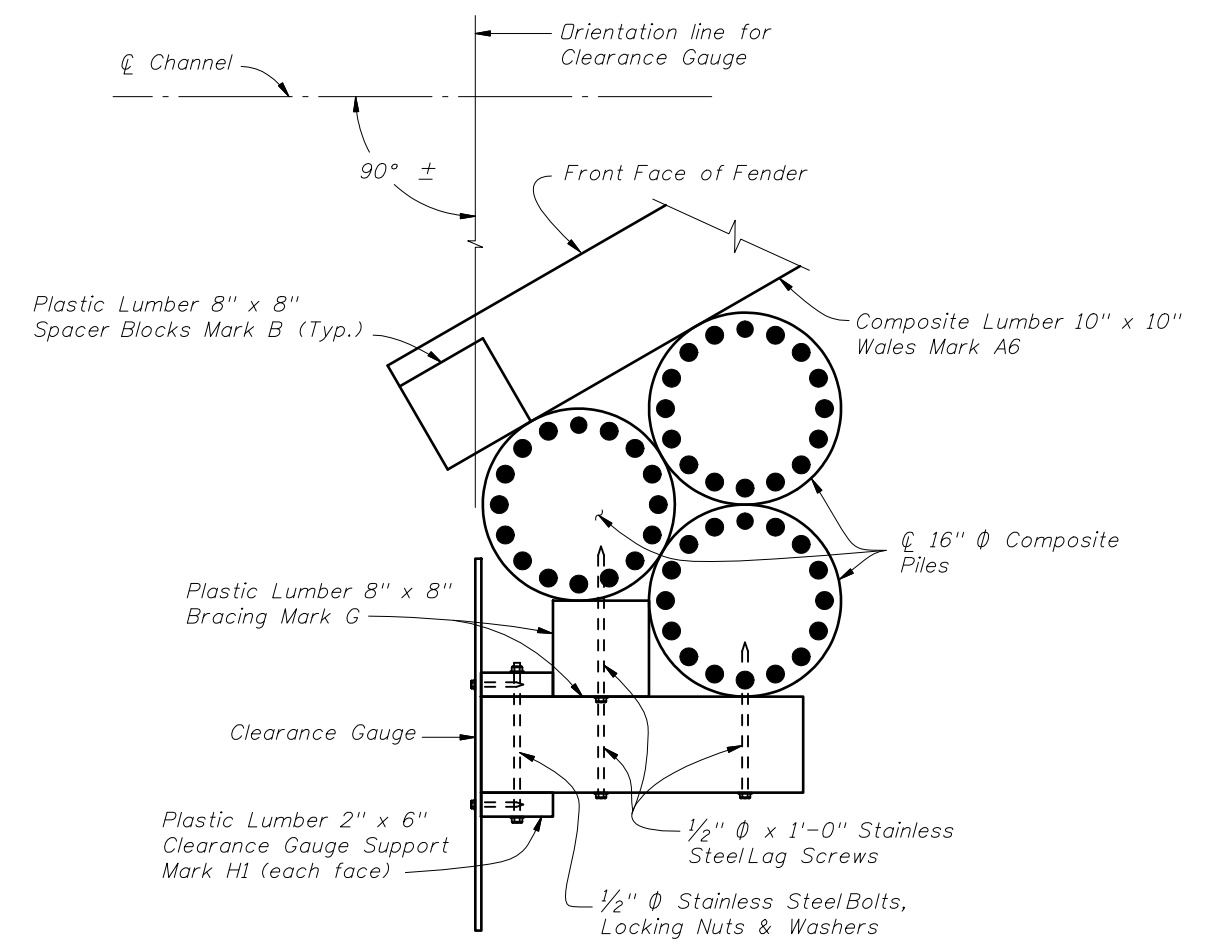
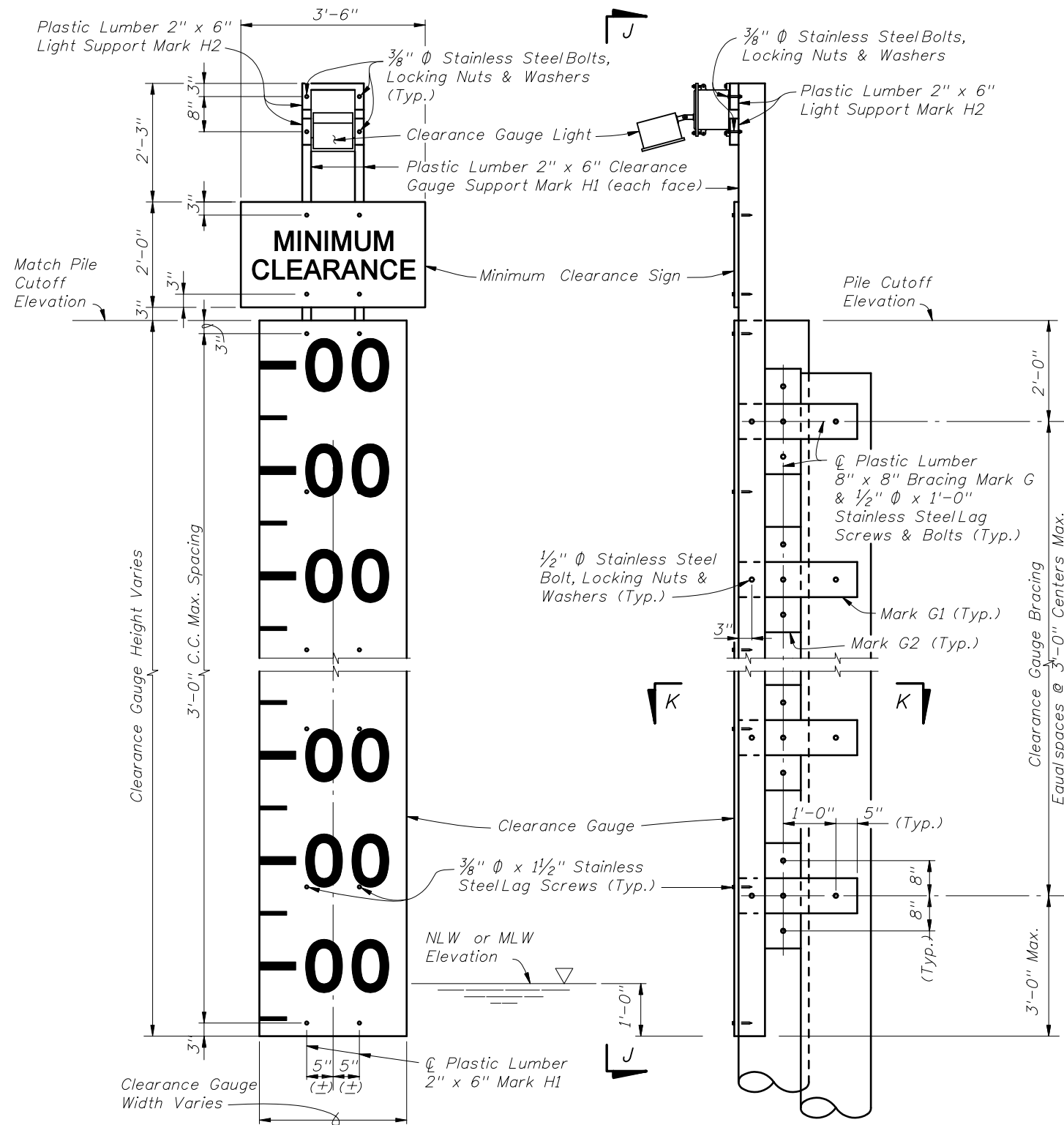
SECTION E-E
TYPICAL STRAIGHT SECTION



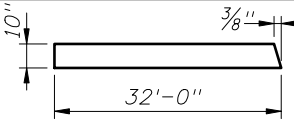
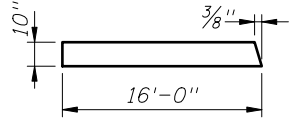
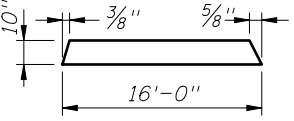
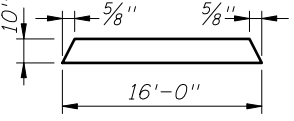
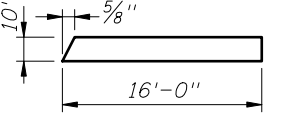
2008 FDOT Design Standards

FENDER SYSTEM - MEDIUM DUTY

Last Revision	Sheet No.
01/01/06	3 of 5
Index No.	
21920	

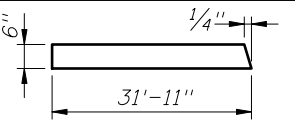
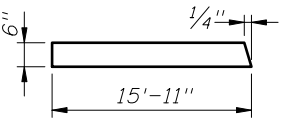
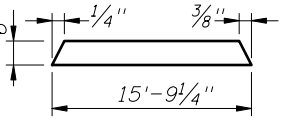
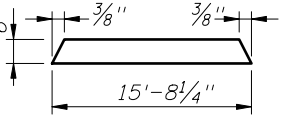
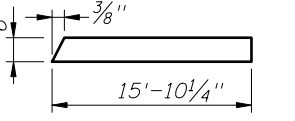


CROSS REFERENCES:
 For Structural Composite and Plastic Lumber Bill of Materials Quantities and Fender System Table of Variables see Structures Plans.

* STRUCTURAL COMPOSITE LUMBER BILL OF MATERIALS					
MARK	SIZE (NOMINAL)	DIMENSIONS	BOARD FT. PER EACH	NO. REQD.	QUANTITY
A1	10" X 10" COMPOSITE LUMBER	32'-0" (STRAIGHT)	266.6	See Estimated Structural Composite and Plastic Lumber Bill of Materials Table in Structures Plans	
A2	10" X 10" COMPOSITE LUMBER		266.6		
A3	10" X 10" COMPOSITE LUMBER		133.3		
A4	10" X 10" COMPOSITE LUMBER		133.3		
A5	10" X 10" COMPOSITE LUMBER		133.3		
A6	10" X 10" COMPOSITE LUMBER		133.3		

* All Plastic Lumber and Composite Lumber Dimensions and Quantities shown are based on Nominal Lumber Dimensions and may vary depending on Actual Lumber Dimension.

** Provide Fiberglass Open Grating in lieu of 2" X 12" Plastic Lumber when called for in the Plans. Mounting hardware shall be Stainless Steel, install per Manufacturer's recommendations. See Index No. 21900 and Structures Plans for Notes and Details.

* PLASTIC LUMBER BILL OF MATERIALS					
MARK	SIZE (NOMINAL)	DIMENSIONS	BOARD FT. PER EACH	NO. REQD.	QUANTITY
B	8" X 8" PLASTIC LUMBER	8" (STRAIGHT)	3.6	See Estimated Structural Composite and Plastic Lumber Bill of Materials Table in Structures Plans	
C	2" X 6" PLASTIC LUMBER	16'-0" (STRAIGHT) (Trim & Miter Ends as required)	16.0		
D	4" X 6" PLASTIC LUMBER	4'-4" (STRAIGHT)	8.7		
** E	2" X 12" PLASTIC LUMBER	2'-6" (STRAIGHT) (Miter as required)	5.0		
F1	6" X 10" PLASTIC LUMBER	32'-0" (STRAIGHT)	160.0		
F2	6" X 10" PLASTIC LUMBER		159.6		
F3	6" X 10" PLASTIC LUMBER		79.6		
F4	6" X 10" PLASTIC LUMBER		78.8		
F5	6" X 10" PLASTIC LUMBER		78.4		
F6	6" X 10" PLASTIC LUMBER		79.2		
G1	8" X 8" PLASTIC LUMBER	2'-3" (STRAIGHT)	12.0		
G2	8" X 8" PLASTIC LUMBER	2'-0" (STRAIGHT)	10.7		
H1	2" X 6" PLASTIC LUMBER	PILE CUTOFF ELEV. MINUS NLW OR MLW ELEV. PLUS 5'-6" (STRAIGHT)	1.0 PER LF EACH		
H2	2" X 6" PLASTIC LUMBER	1'-0" (STRAIGHT)	1.0		



2008 FDOT Design Standards

FENDER SYSTEM - MEDIUM DUTY

Last Revision	Sheet No.
01/01/06	5 of 5
Index No.	
21920	