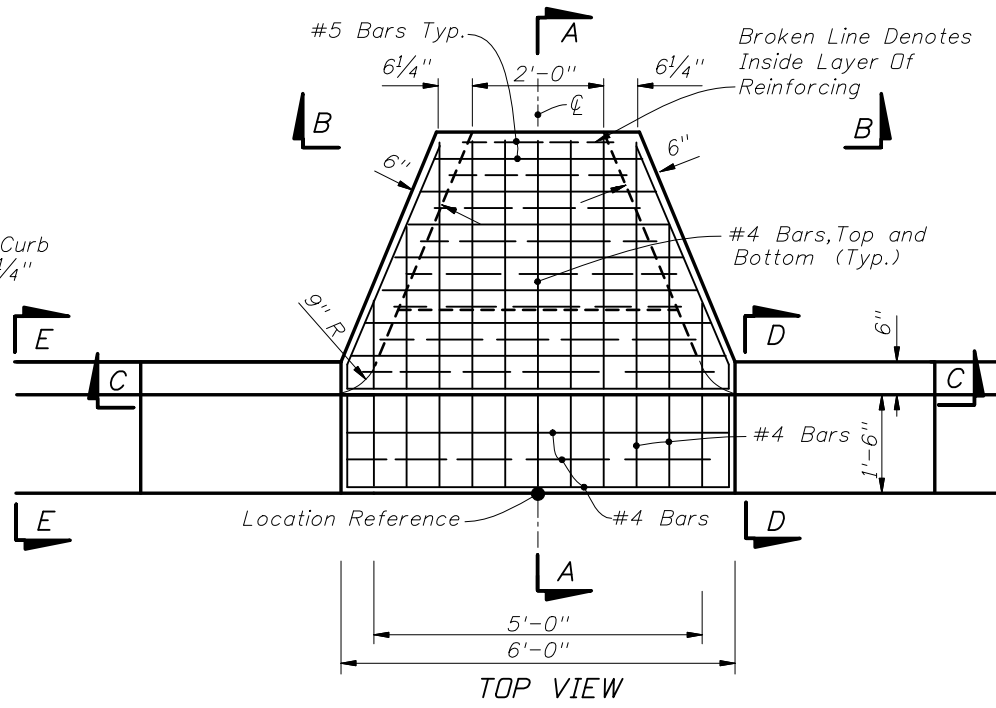


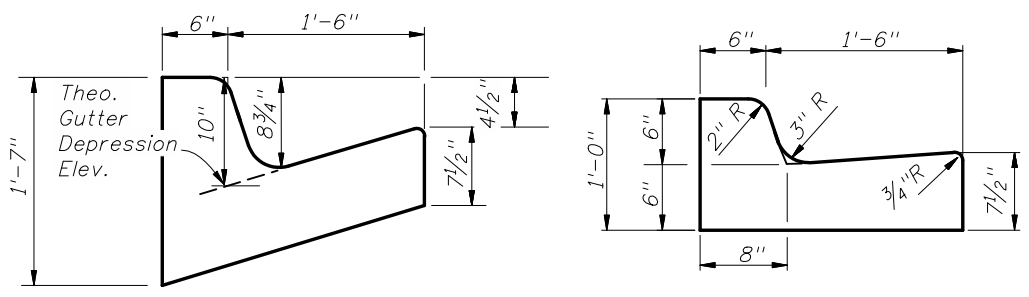
SECTION AA



TOP VIEW

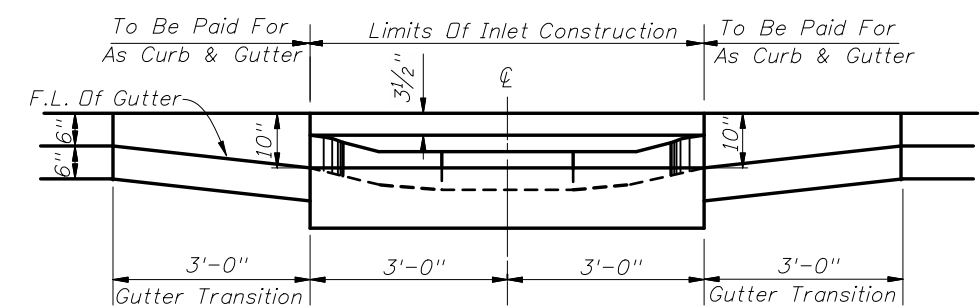
GENERAL NOTES

1. The finished grade and slope of the inlet top are to conform with the finished cross slope and grade of the proposed sidewalk and/or border.
2. When inlets are to be constructed on a curve, refer to the plans to determine the radius and, where necessary, modify the inlet details accordingly. Bend steel when necessary.
3. All steel shall have 1/4" minimum cover unless otherwise shown. Inlets can be either cast-in-place or precast concrete. Chamfer all exposed edges 3/4".
4. All reinforcement is ASTM A615/A615M Grade 60 steel, either smooth or deformed. Equivalent area grade 40 steel or 65 ksi welded wire fabric may be substituted.
5. Inlets to be paid for under the contract unit price for Inlets (Closed Flume) EA.



SECTION DD

Curb And Gutter Type F SECTION EE

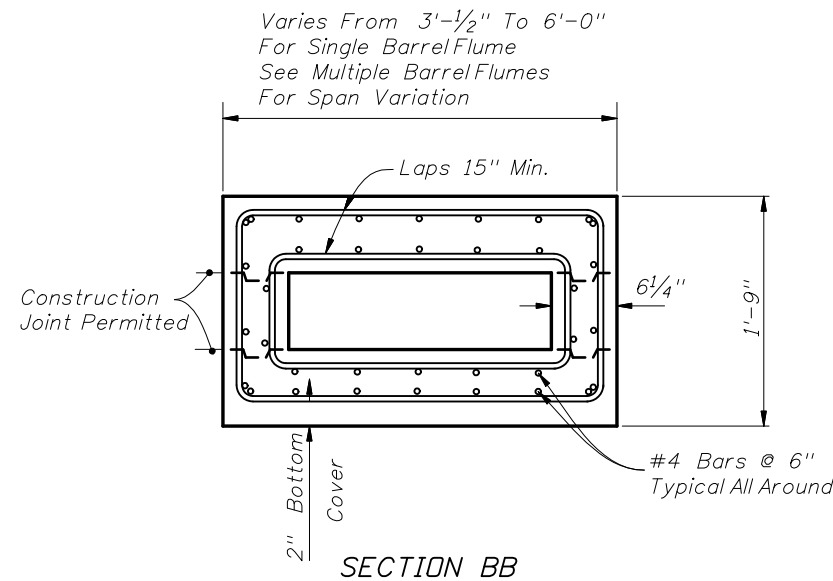


SECTION CC SINGLE BARREL FLUME

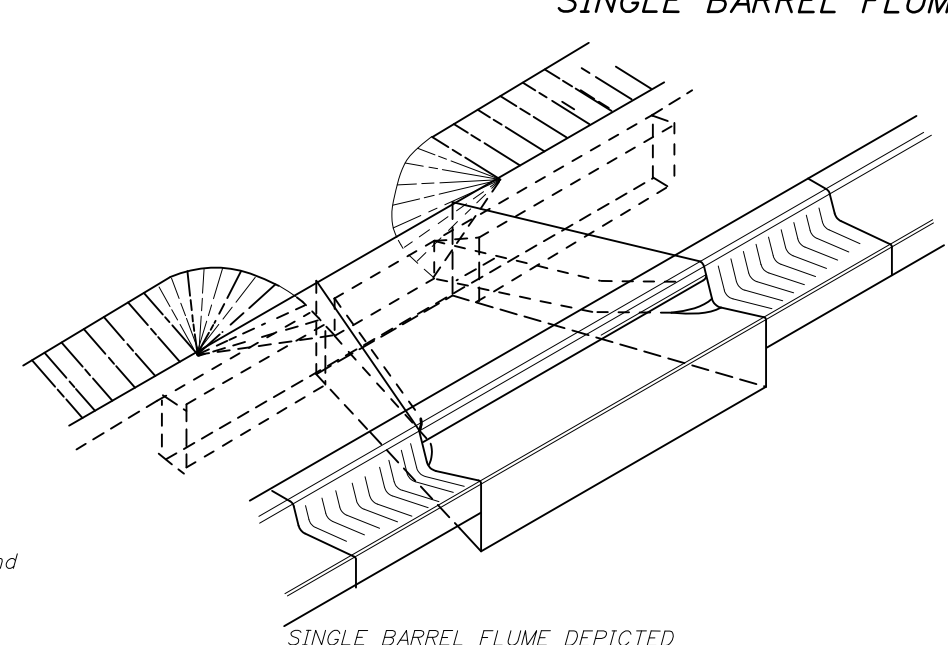
DESIGN NOTES

1. These inlets are designed for use with Type F curb and gutter only. Locate inlet outside of curb ramp area.

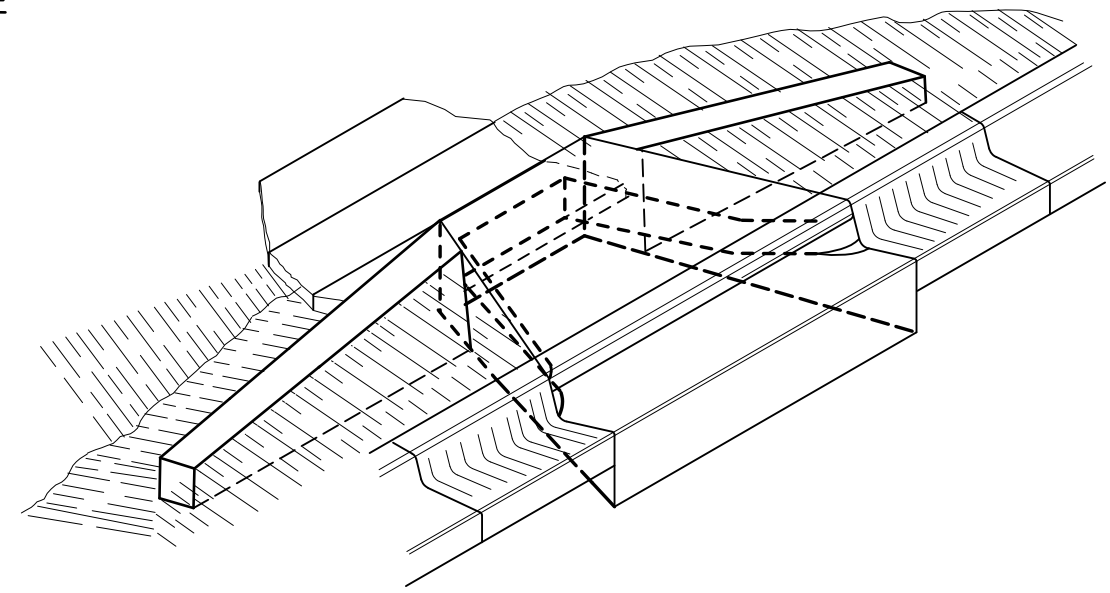
The Single Barrel Flume is intended for locations with light to moderate flows. Multiple Barrel Flumes must be selected to meet design heavy flows.
2. Designer must specify Flume Type, "D" dimension, number of barrels and guiderail requirements in plans.
3. Designer must specify where energy dissipating bricks are required.



SECTION BB



FLUME W/SIDEWALK INLET (CLOSED FLUME) TYPE I



FLUME W/O SIDEWALK INLET (CLOSED FLUME) TYPE II

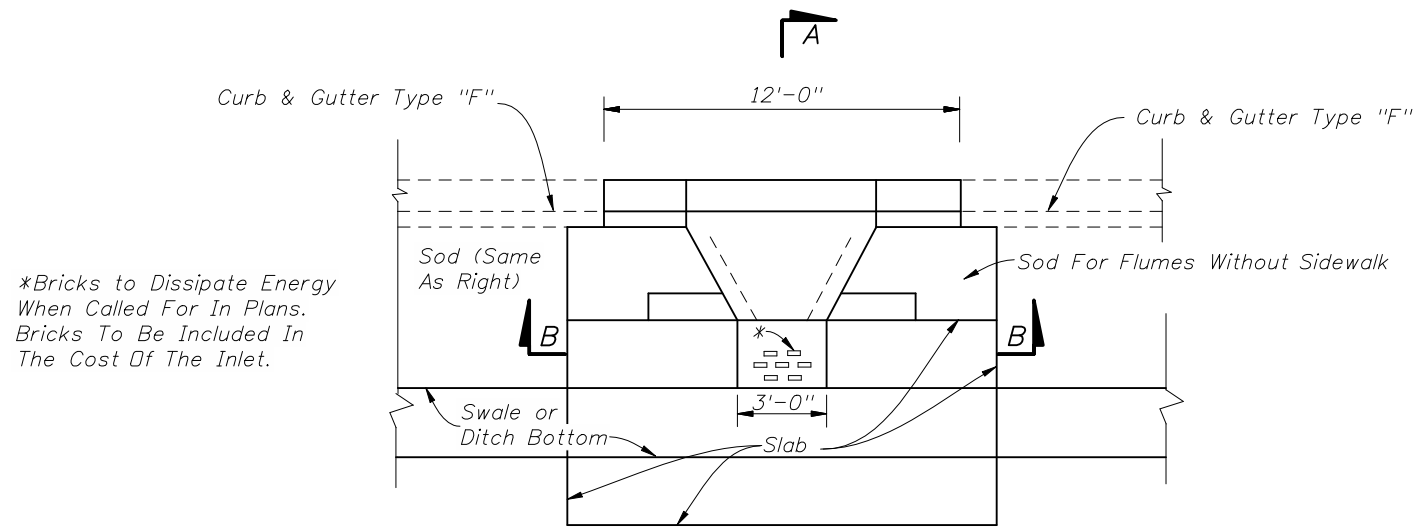


2008 FDOT Design Standards

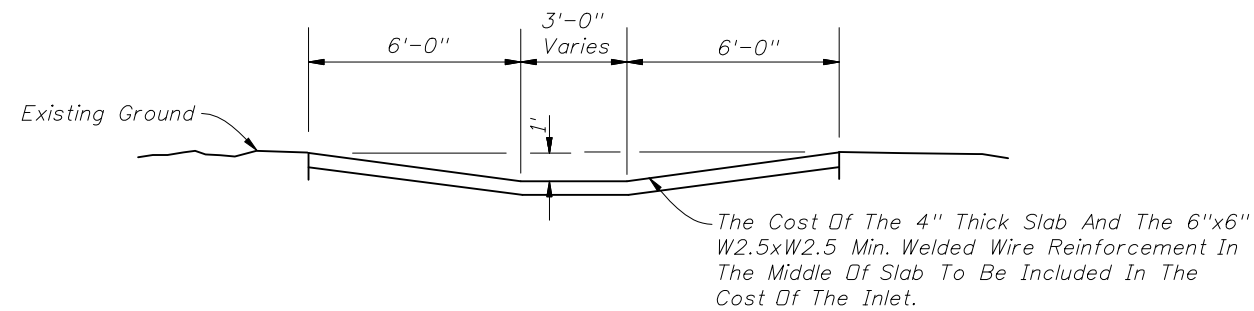
CLOSED FLUME INLET

Last Revision 07/01/07 Sheet No. 1 of 3

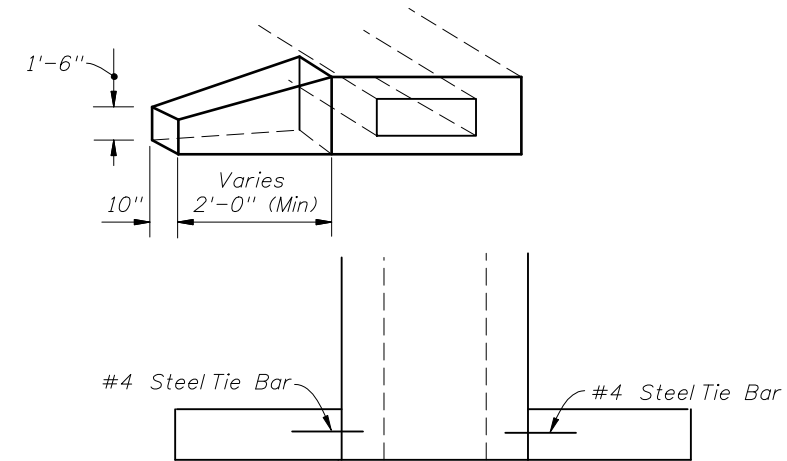
Index No. 216



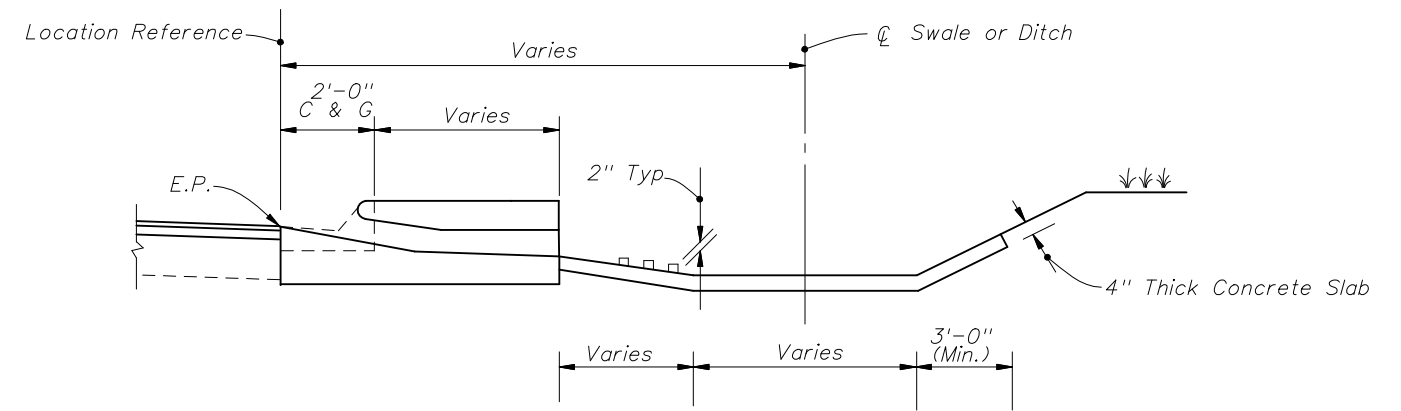
SINGLE BARREL FLUME DEPICTED
PLAN



SINGLE BARREL FLUME DEPICTED
SECTION BB

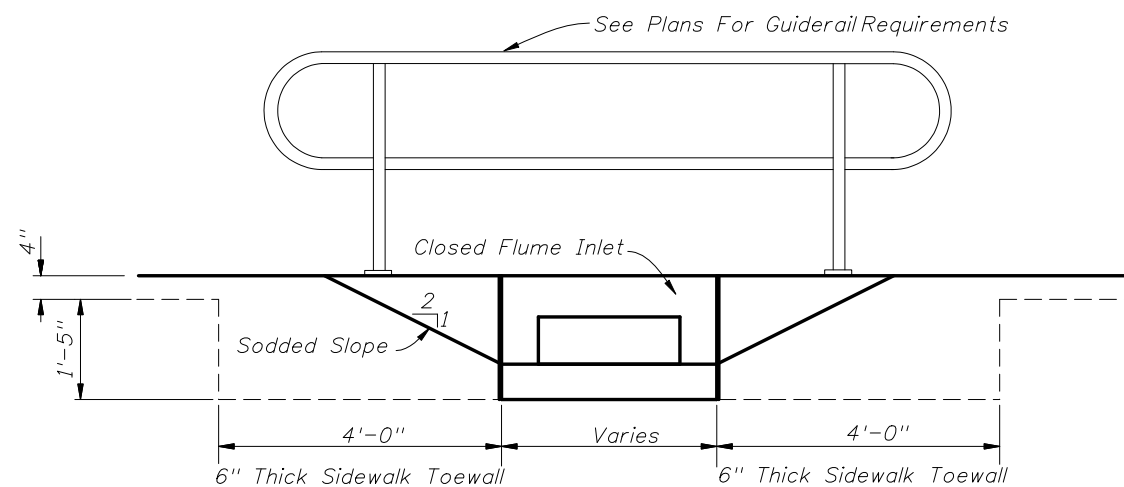


SINGLE BARREL FLUME DEPICTED
ENDWALL



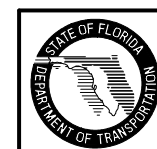
Ditch Pavement To Be Adjusted When Inlet Present
SECTION AA

SLOPES, DITCH APRON AND ENDWALLS



SINGLE BARREL FLUME DEPICTED
ELEVATION

GUIDERAIL FOR FLUME IN SIDEWALK

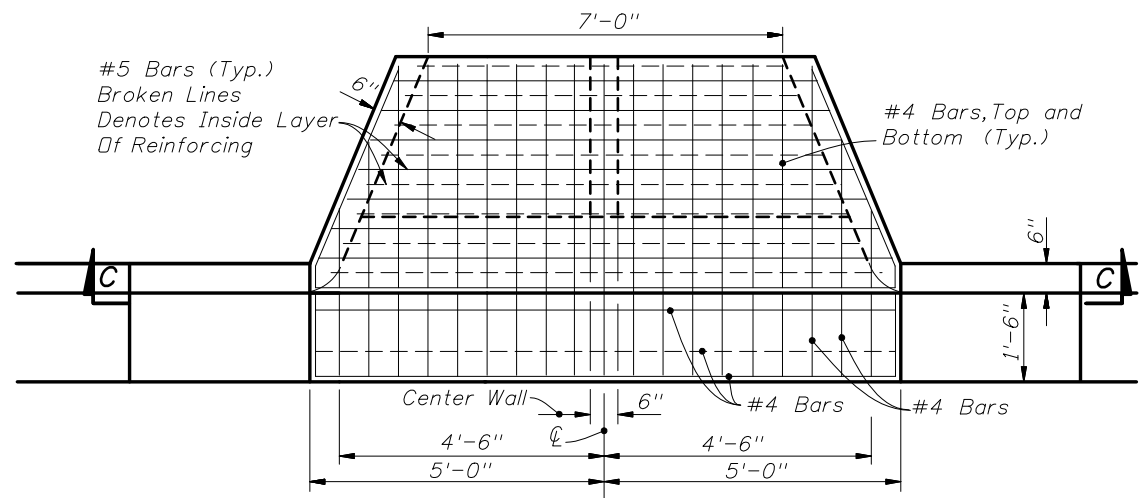


2008 FDOT Design Standards

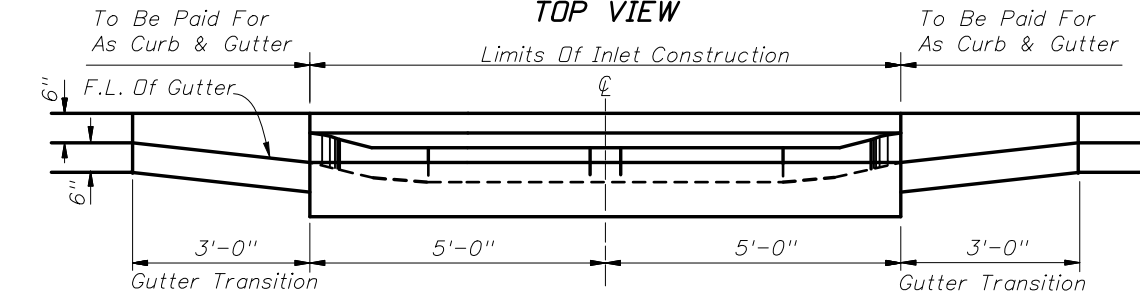
CLOSED FLUME INLET

Last Revision 07 Sheet No. 2 of 3

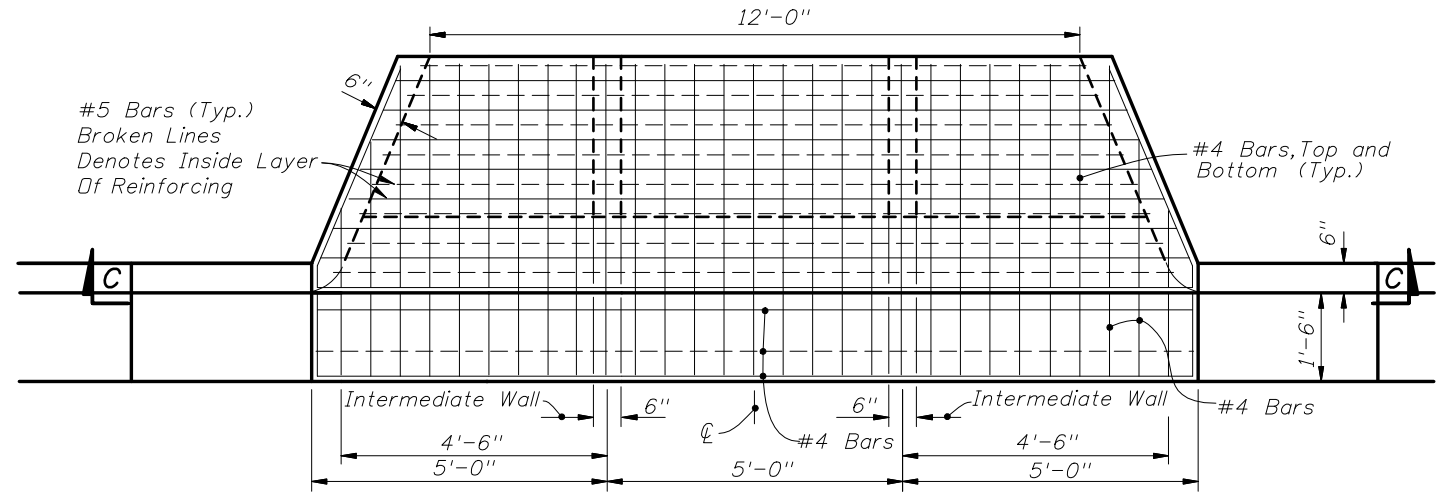
Index No. 216



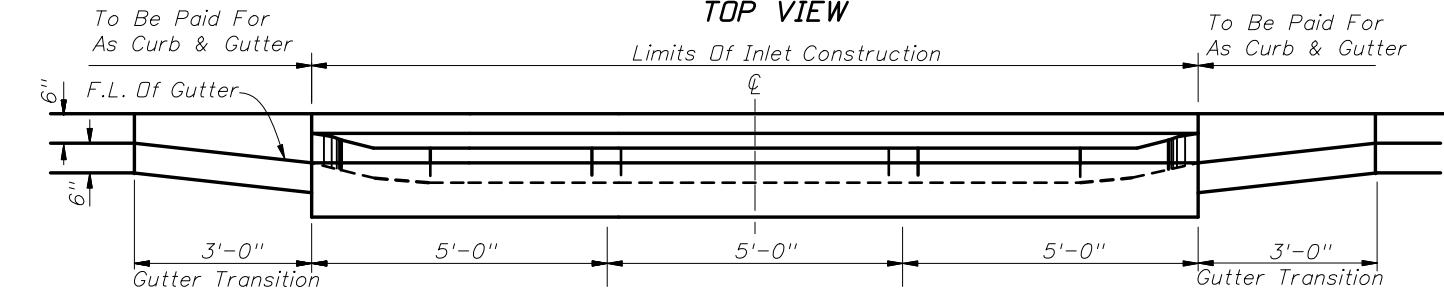
TOP VIEW



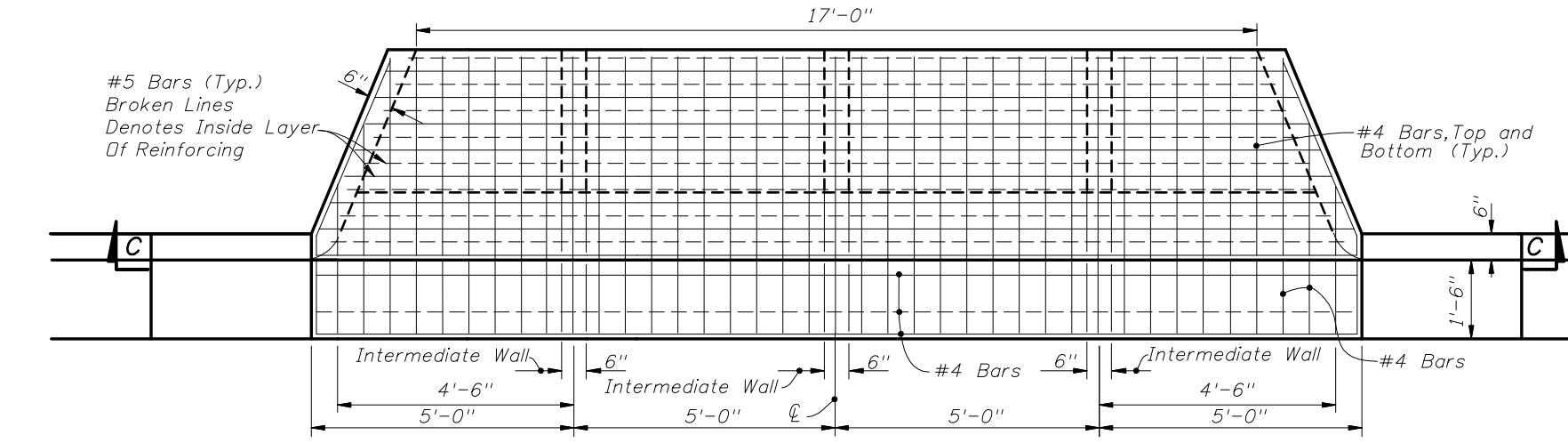
SECTION CC
DOUBLE BARREL FLUME



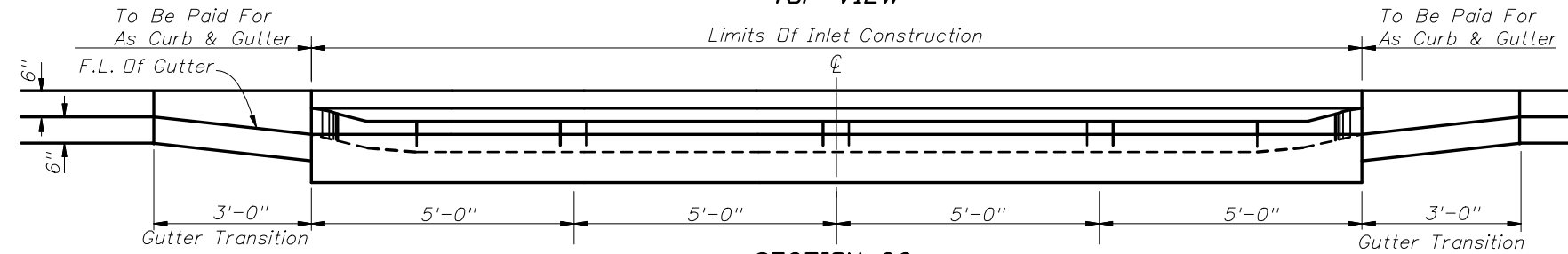
TOP VIEW



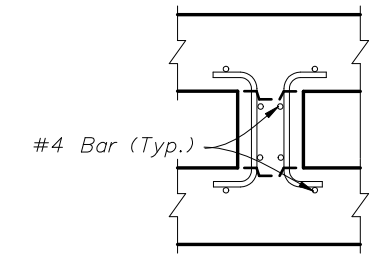
SECTION CC
TRIPLE BARREL FLUME



TOP VIEW



SECTION CC
QUADRUPLE BARREL FLUME



INTER-WALL REINFORCING

NOTE: See Single Barrel Flume For Base Dimensions.



2008 FDOT Design Standards

CLOSED FLUME INLET

Last Revision 02
Sheet No. 3 of 3

Index No. 216