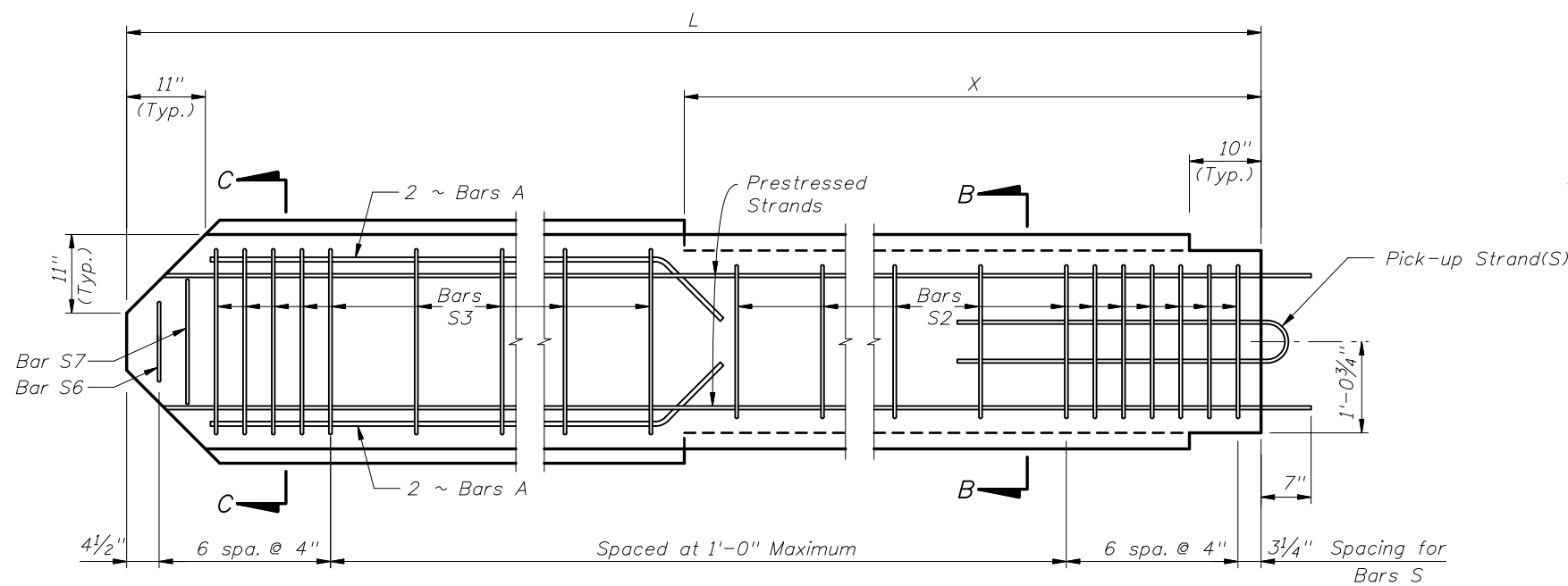


TYPICAL PILE

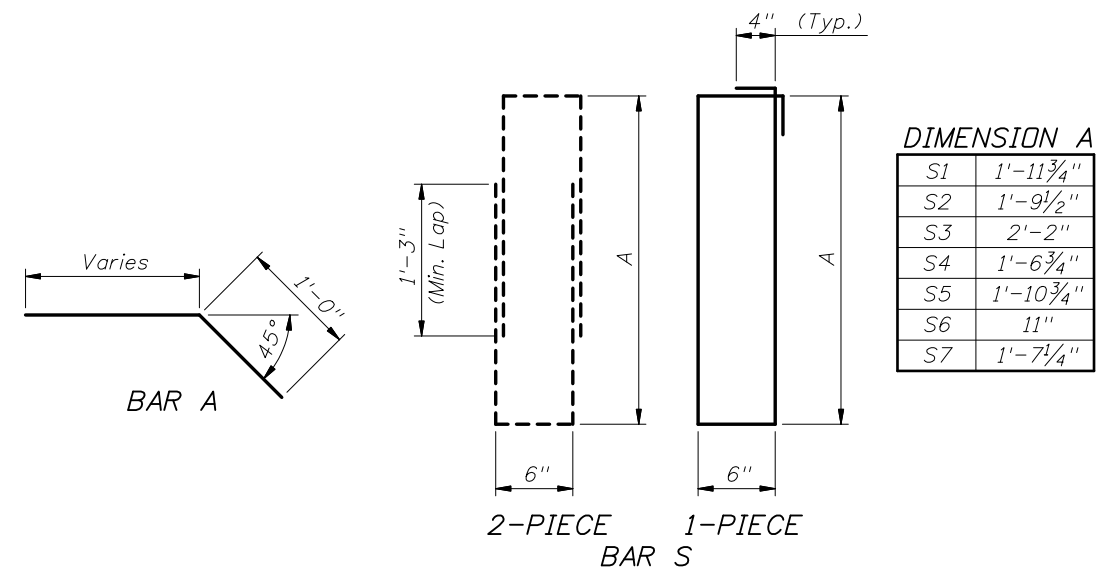


STARTER PILE

| STRAND DIA. (in.) | MAXIMUM L | n | D (in.) | TOTAL # OF STRANDS | SECTION MODULUS (in. ³) | * STRESS (PSI) |
|-------------------|-----------|---|---------|--------------------|-------------------------------------|----------------|
| 0.5 | 31'-0" | 7 | 2 7/8 | 16 | 720 | 1100 |
| 0.6 | 30'-0" | 5 | 4 | 12 | 720 | 1160 |

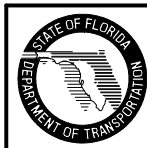
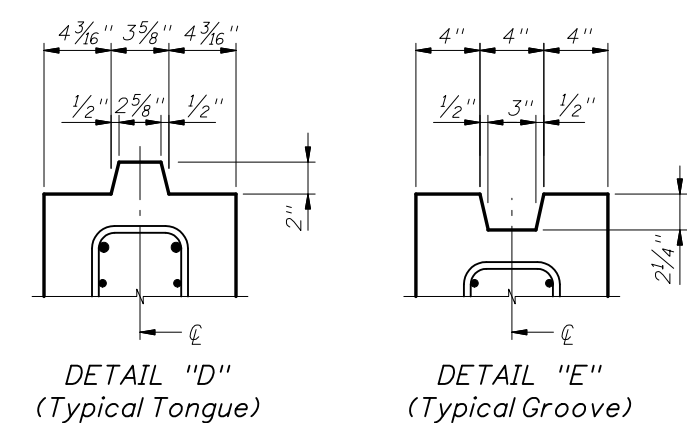
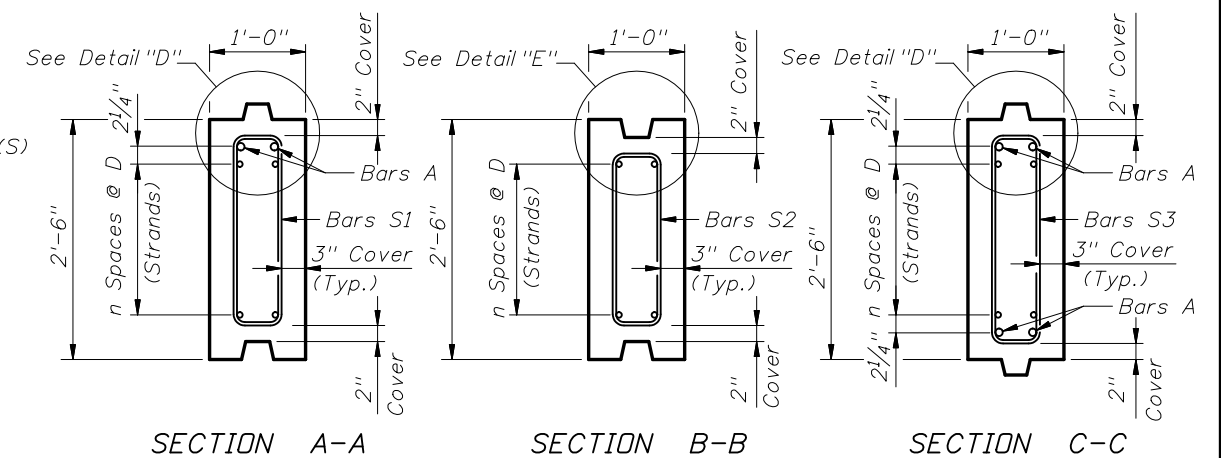
* Unit Prestress after losses.

BAR BENDING DIAGRAMS



NOTES:

1. Work this Standard with Index No. 20400.
2. Intermediate Prestress Strands not shown in Elevations and Sections.
3. All bar dimensions are out-to-out.
4. Bars A are #5 and Bars S are #4.
5. At the Contractor's option Bars S may be fabricated as a two piece bar as shown in the Bar Bending Diagram.
6. The Contractor may use Deformed Welded Wire Reinforcement conforming to specification ASTM A497 in lieu of Bars A and Bars S if the wire size and spacing provide the same area of reinforcing steel per foot as the Bars shown.
7. For Dimensions L and X see Sheet Pile Data Table in Structures Plans.



2008 FDOT Design Standards

PRECAST CONCRETE SHEET PILE
TYPE "A" - 12 INCH THICK

Last Revision 07/01/07
Sheet No. 1 of 1
Index No. 20412