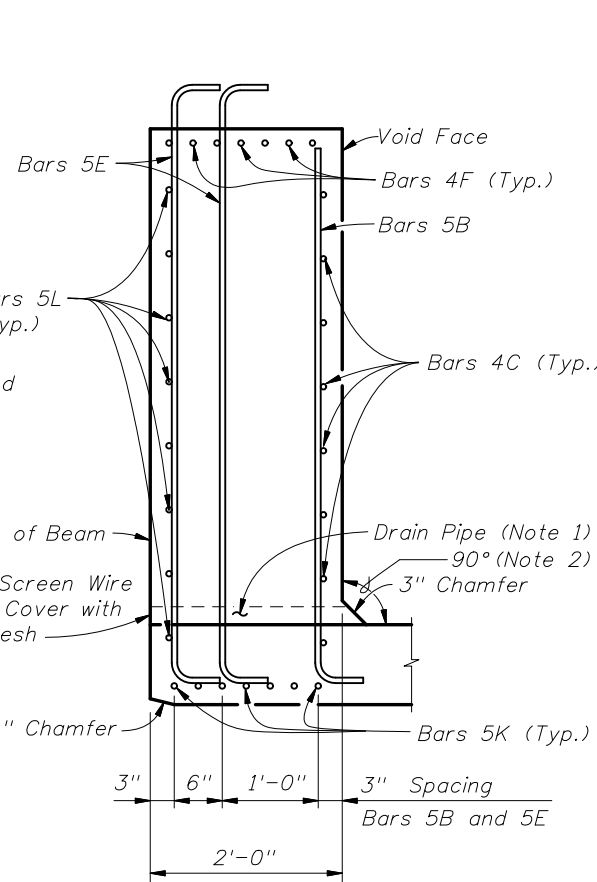


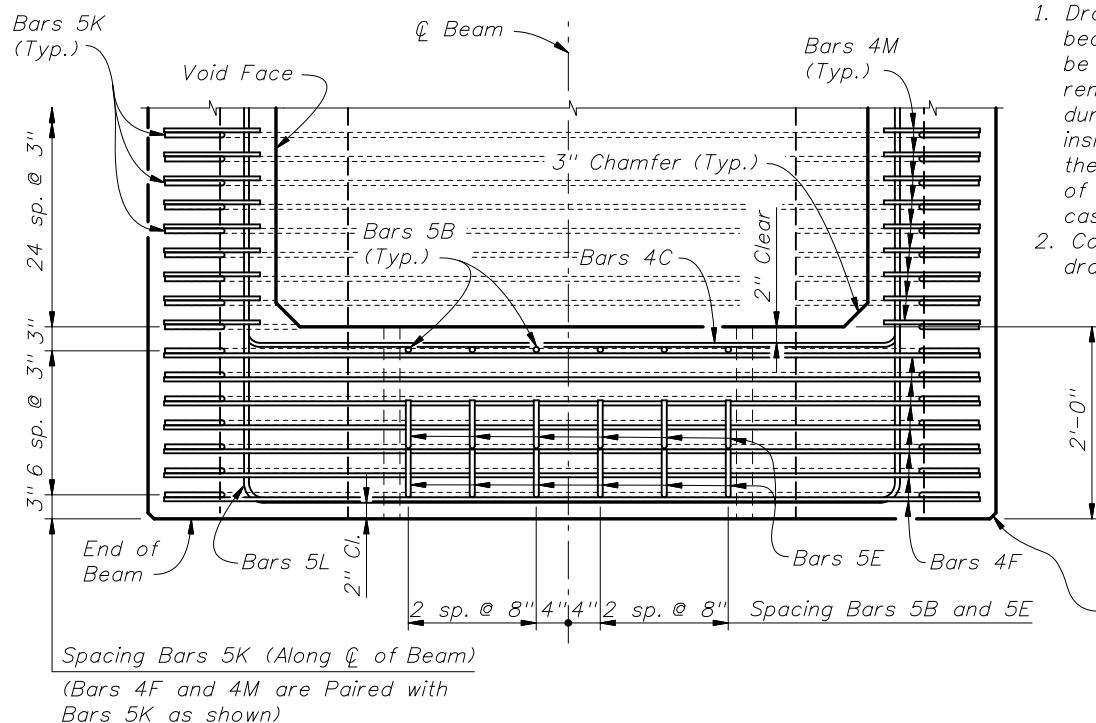
END VIEW AT END DIAPHRAGM



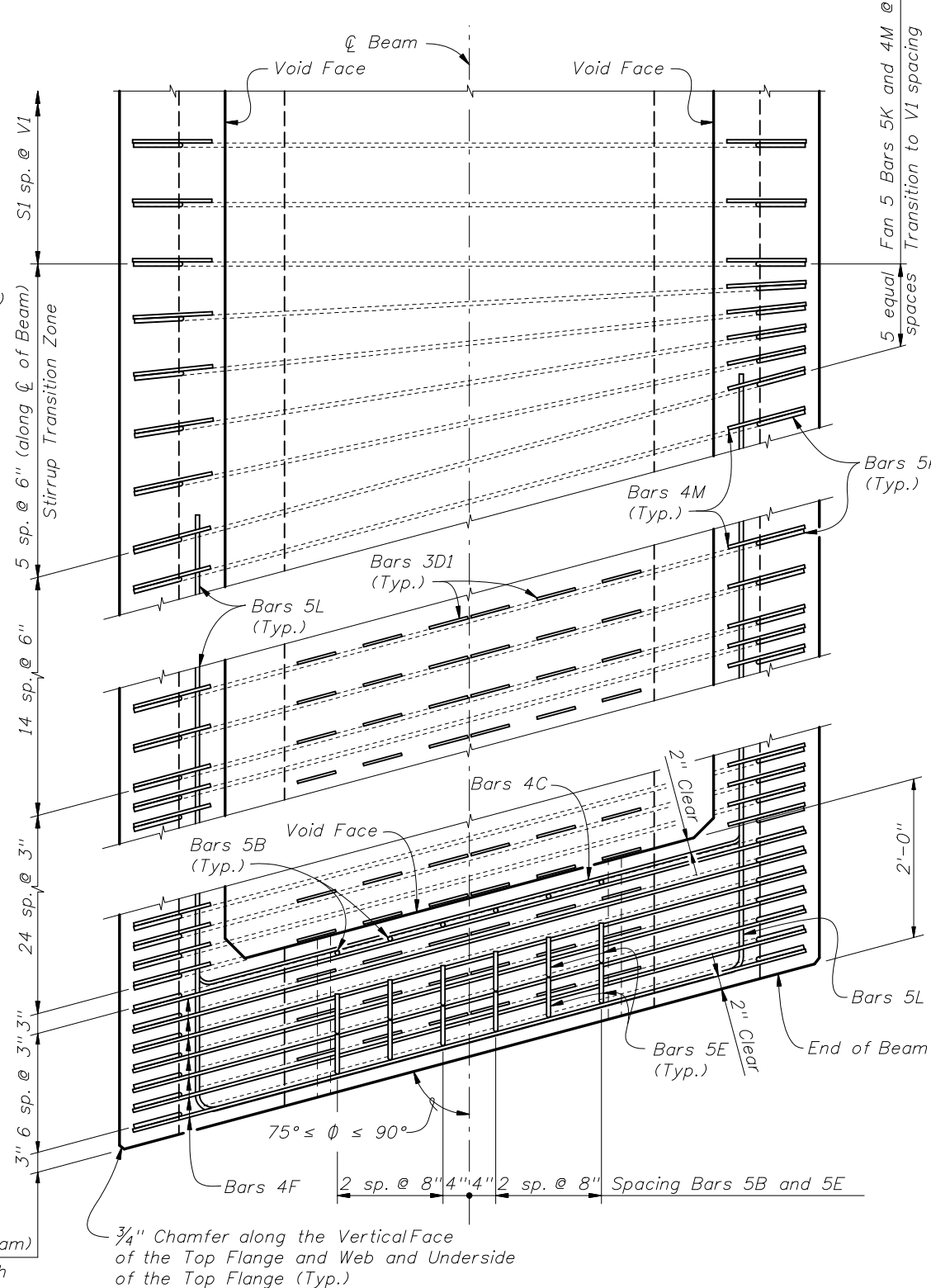
SECTION C-C

NOTES:

1. Drains shall be placed adjacent to each web at each beam end (four drains per beam). Drain Pipe shall be 2" Nominal Pipe Size, Schedule 80 PVC. Provide removable pipe plugs to prevent concrete entrance during beam casting. Plugs to be removed from the inside after casting. Galvanized screen wire shall cover the end of the pipe and bent down around the sides of the pipe, a minimum of 1" and secured prior to casting.
2. Concrete face may be sloped with a maximum 1:24 draft to facilitate formwork removal.



TOP VIEW OF END DIAPHRAGM  
(Bars 3D1 And 3D2 Not Shown For Clarity)



TOP VIEW OF SKEWED END DIAPHRAGM  
AND STIRRUP TRANSITION ZONE  
(Bars 3D2 Not Shown For Clarity)



2008 FDOT Design Standards

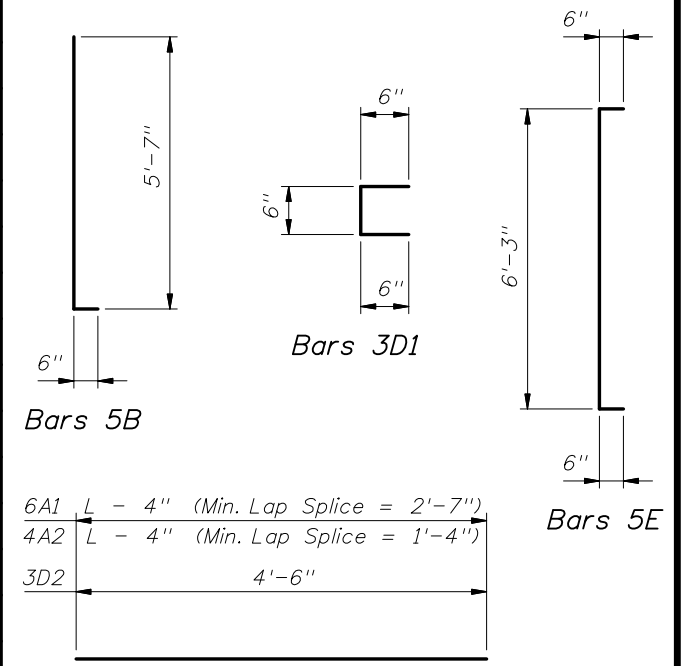
FLORIDA U 72 BEAM - STANDARD DETAILS

Last Revision 07/01/05  
Sheet No. 2 of 3  
Index No. 20272

CONVENTIONAL REINFORCING STEEL BENDING DIAGRAMS

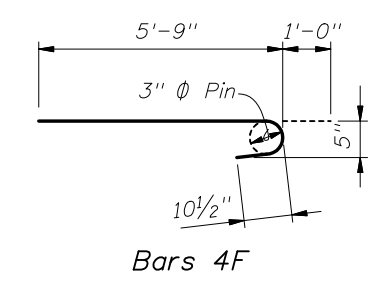
BILL OF REINFORCING STEEL FOR ONE BEAM ONLY

MARK	SIZE	NO. REQD.	LENGTH
A1	6	4	DIM L - 4"
A2	4	14	DIM L - 4"
B	5	12	6'-1"
C	4	28	5'-7"
D1	3	228	1'-6"
D2	3	38	4'-6"
E	5	24	7'-3"
F	4	28	6'-9"
G	4	See Table	6'-0"
H	4	See Table	5'-1"
K	5	See Table	10'-0"
L	5	32	19'-6"
M	4	See Table	3'-11"
N	3/8" Ø Strand	2	DIM L - 3"

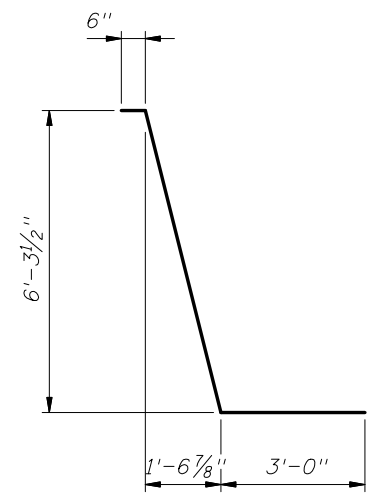


6A1 L - 4" (Min. Lap Splice = 2'-7")  
 4A2 L - 4" (Min. Lap Splice = 1'-4")  
 3D2 4'-6"

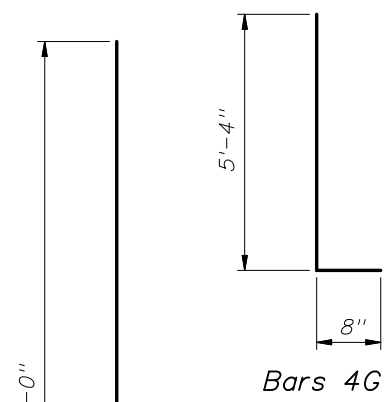
Bars 6A1, 4A2 and 3D2



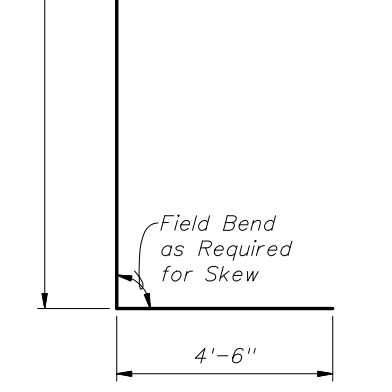
Bars 4F



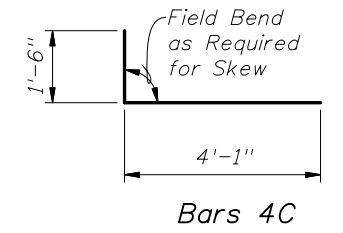
Bars 5K



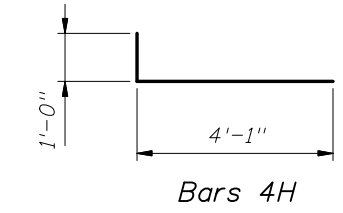
Bars 4G



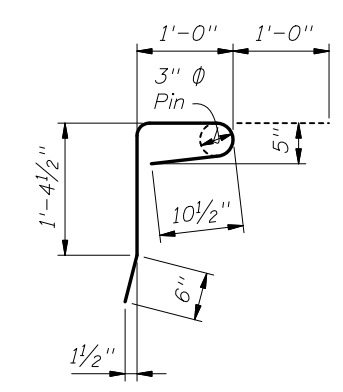
Bars 5L



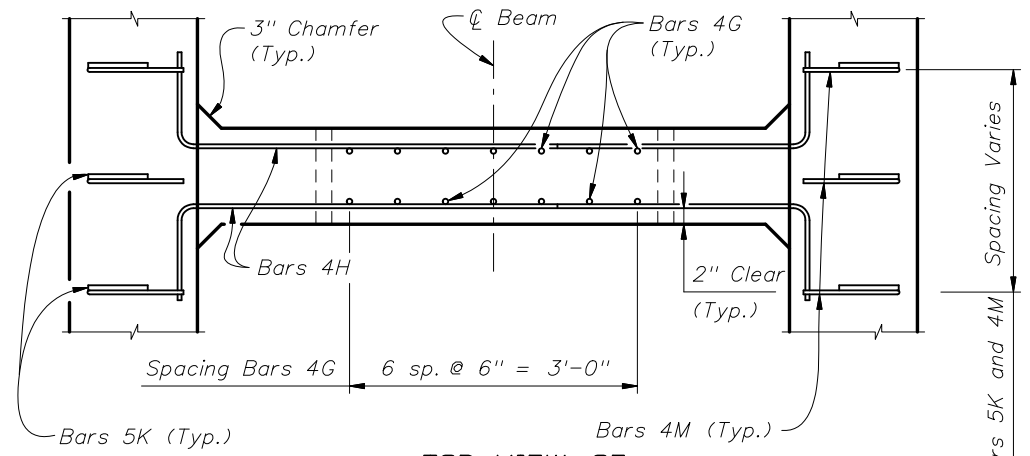
Bars 4C



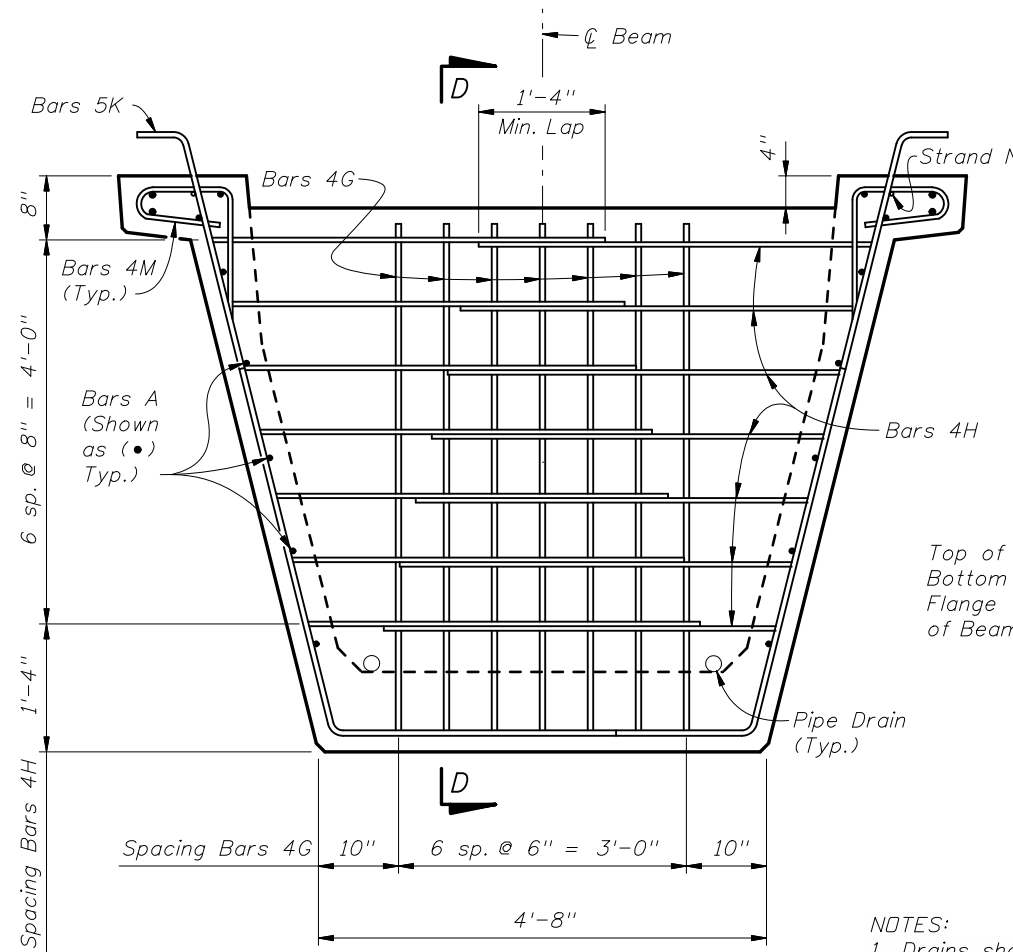
Bars 4H



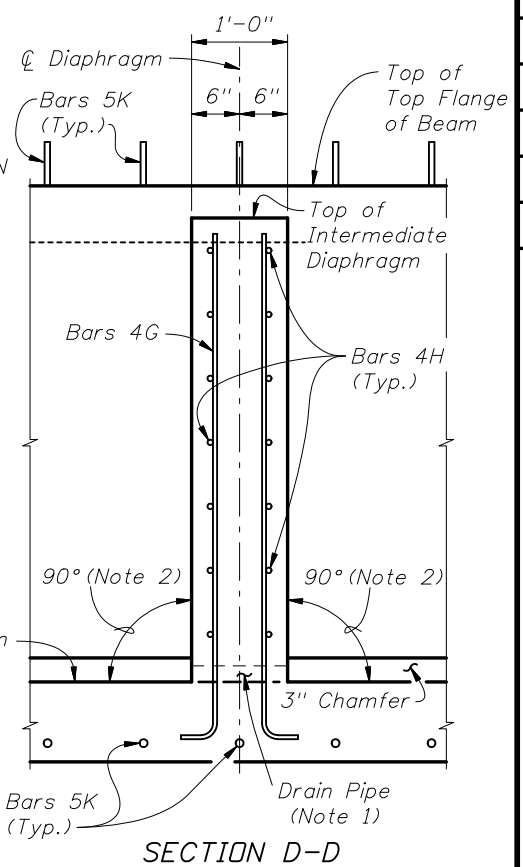
Bars 4M



TOP VIEW OF INTERMEDIATE DIAPHRAGM



SECTION AT INTERMEDIATE DIAPHRAGM



SECTION D-D

NOTES:

1. Drains shall be placed adjacent to each web at each intermediate diaphragm (two drains per intermediate diaphragm). Drain Pipe shall be 2" Nominal Pipe Size, Schedule 80 PVC. Provide removable pipe plugs to prevent concrete entrance during beam casting. Plugs to be removed from the inside after casting.
2. Concrete face may be sloped with a maximum 1:24 draft to facilitate formwork removal.
3. Intermediate diaphragms must be cast and concrete release strength obtained prior to removing beam from casting bed.



2008 FDOT Design Standards

FLORIDA U 72 BEAM - STANDARD DETAILS

Last Revision 07/01/05 Sheet No. 3 of 3

Index No. 20272