

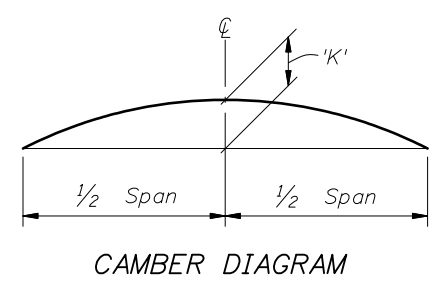
ISOMETRIC VIEW

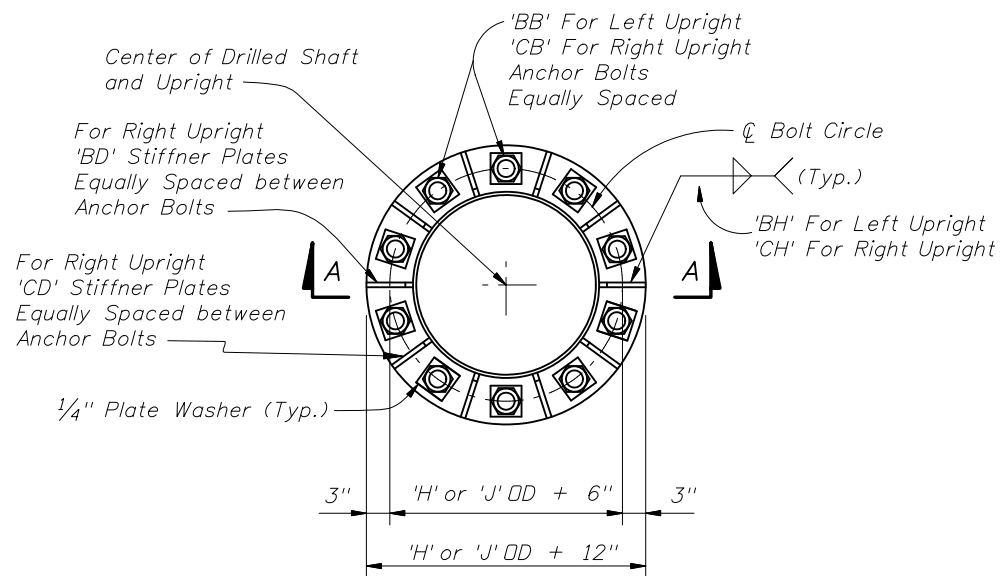
*NOTE: Contractor shall verify these Dimensions Prior to Fabrication of Uprights.

SPAN SIGN STRUCTURE NOTES

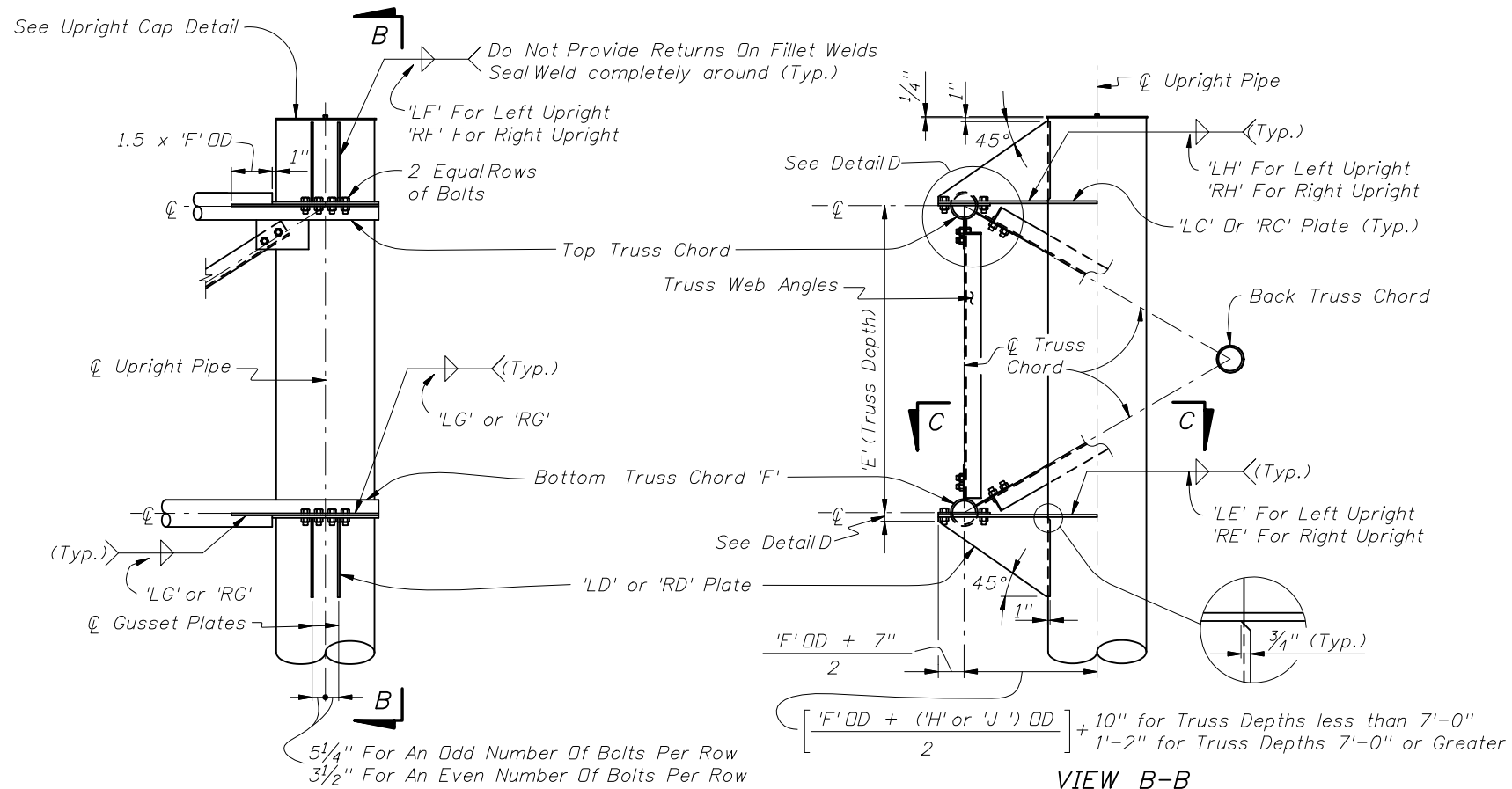
- 1) Design according to FDOT Structures Manual. Alternate Designs are not allowed.
- 2) Submit shop drawings for all work. Include:
 - a. Field verification of all upright heights.
 - b. Foundation elevations necessary to insure minimum vertical clearances as per traffic plans.
 - c. Anchor bolt orientation with respect to centerline of truss and the direction of traffic.
 - d. The method to be used to provide the required parabolic camber. (See Camber Diagram)
- 3) Shop Fabrication, Assembly, Handling and Shipping:
 - a. Do not begin fabrication before receiving shop drawing approval.
 - b. Welding: Conform to American Welding Society Structural Welding Code (Steel) ANSI/AWS D1.1 (current edition).
 - c. Shop assemble the entire structure after galvanizing and prior to shipment.
 - d. If necessary, disassemble and secure components for shipment.
- 4) Sign Structure Materials:
 - a. Upright and Chords (Steel Pipe): API -5L-X42 (42 ksi yield) or ASTM A500, Grade B.
 - b. Steel Angles: ASTM A 709, Grade 36.
 - c. Steel Plates: ASTM A 709, Grade 36.
 - d. Weld Metal: E70XX.
 - e. Bolts: ASTM A307 or ASTM A325 Type 1, (snug tight) with single, self-locking nuts or regular nuts with a galvanized, locking TRW "Palnut." Alternate Splice Bolts: ASTM A325, Type I (slip critical).
 - f. Anchor Bolts: ASTM F1554, Grade 55 with ASTM A563 Grade A heavy-hex double nuts.
 - g. Install all nuts per manufacturer's instructions.
 - h. Bolt hole diameters: equal to the bolt diameter plus 1/16".
 - i. Anchor bolt hole diameters: equal to the bolt diameter plus 1/2".
- 5) Galvanization; Nuts, bolts and washers: ASTM F2329. Other steel items: ASTM A123
- 6) Sign Panels: Aluminum. See Elevation drawing for sizes and locations.
- 7) Foundation Materials:
 - a. Reinforcing Steel: ASTM A615, Grade 60.
 - b. Concrete: Class IV, minimum 5.5 ksi compressive strength at 28-days for all environmental classifications.
 - c. Grout: Minimum 5.0 ksi compressive strength at 28-days. Conform to Specification Section 934 using procedures outlined in Section 649-6.
- 8) Construct the Sign Structure foundation in accordance with FDOT Specification Section 455.
- 9) If a grout pad is not installed, place wire cloth screen vertically between the base plate and top of foundation, wrap horizontally around the base plate with a 3" min. lap. Use standard grade, plain weave, 2x2 mesh, galvanized steel wire-cloth with 0.063" dia. wire. Attach the screen to the base plate with stainless steel self-tapping 1/4" screws with stainless steel washers spaced at 9" centers.
- 10) Prior to erection, record the as-built anchor locations and provide to the Engineer.
- 11) Provide a parabolic camber with the maximum upward deflection as shown on the Camber Diagram.
- 12) Locate Chord splices a minimum of 3 truss panel lengths apart. Chord splices may be either the Standard splice or the Alternate splice but not both on this structure. Upright splices are not allowed.
- 13) Install sign panels as shown on the Elevation drawing.
- 14) Payment: All costs associated with the Sign Structure, Sign Panels, Foundation and all incidental items will be paid for under the Sign Structure pay item.

NOTE: See Plans for Span Sign Structure Data Table.



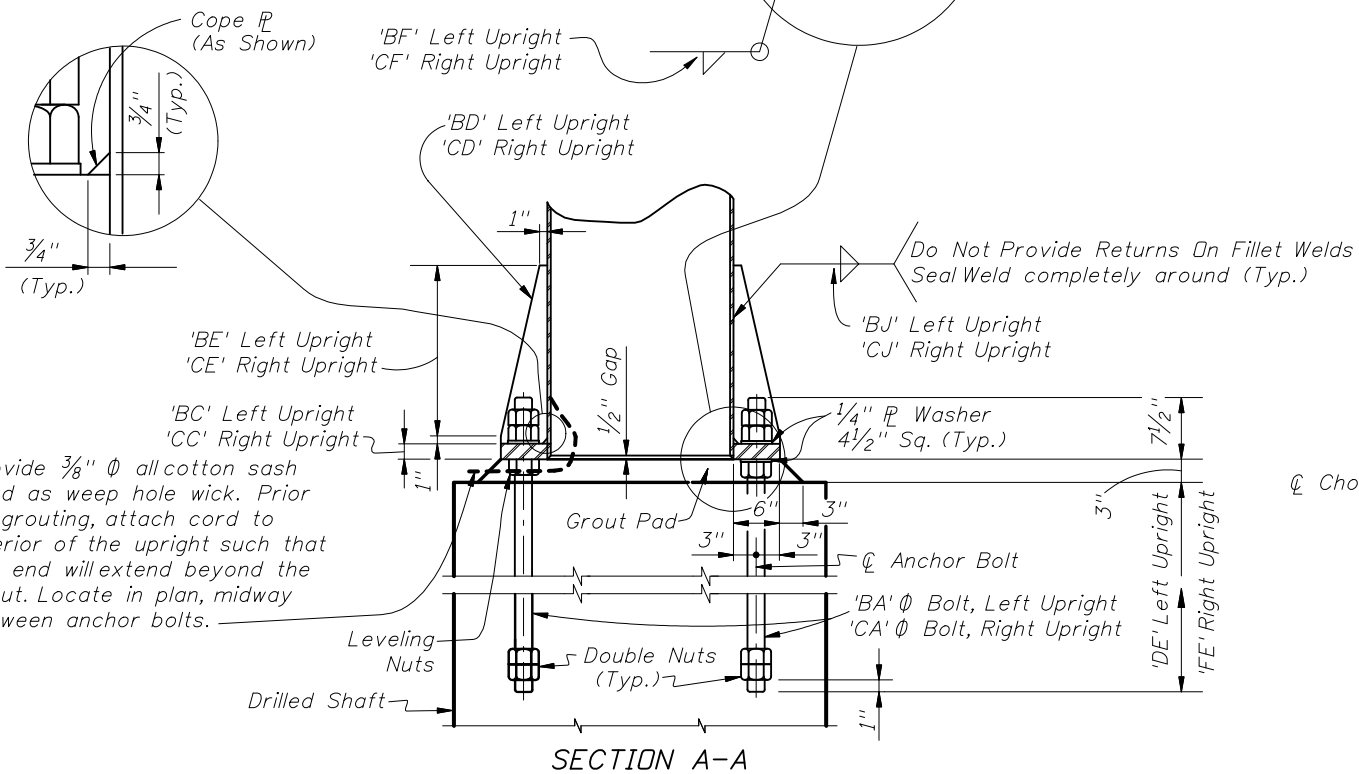


PLAN VIEW
BASE PLATE

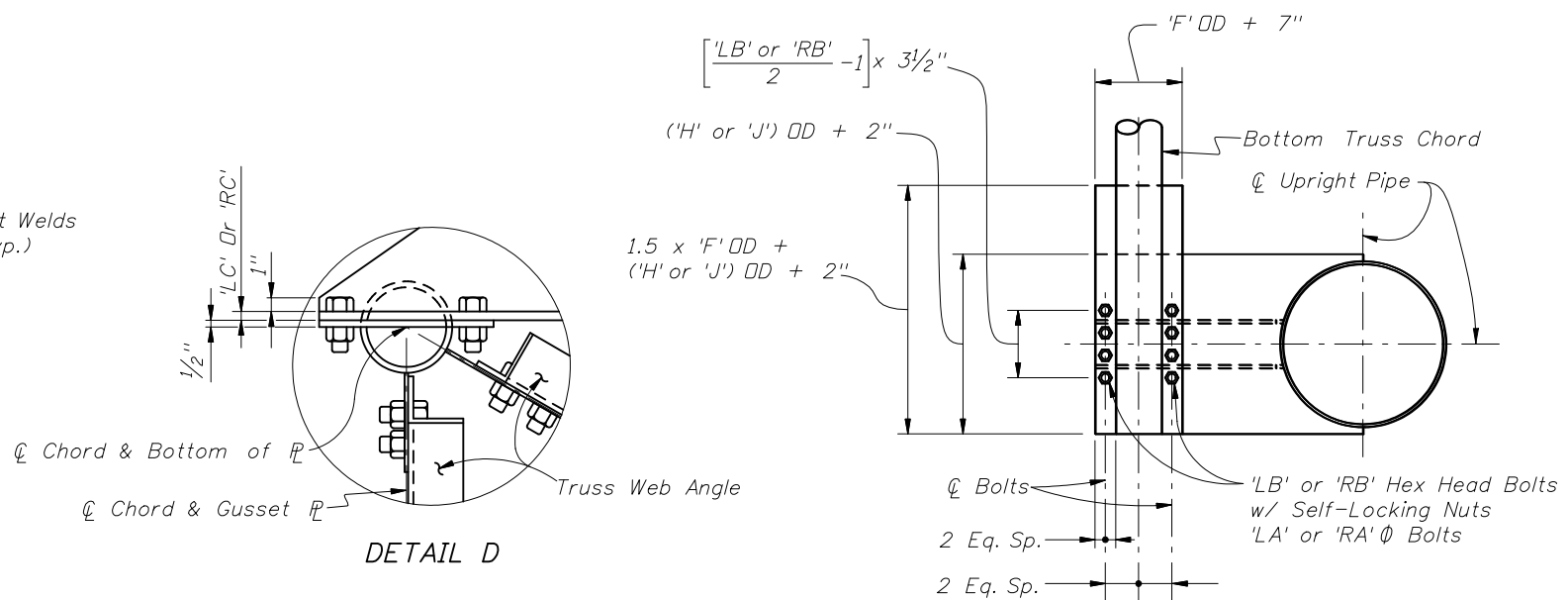


RIGHT UPRIGHT-TRUSS CONNECTION DETAIL
(LEFT UPRIGHT -TRUSS CONNECTION SIMILAR)

Web Members From Back Truss
Chord Omitted For Clarity



SECTION A-A



SECTION C-C

(With Gusset Plate and
Angles omitted for clarity)

NOTE:
Abbreviation
OD ~ Outside Diameter

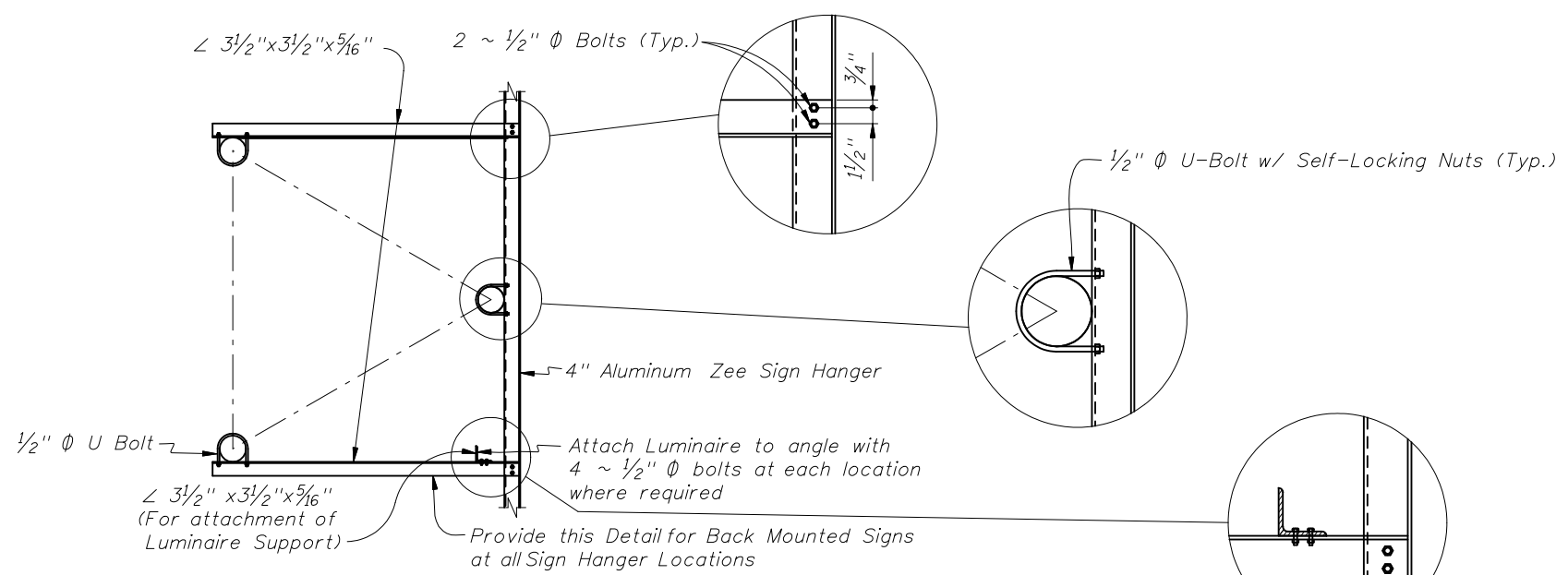
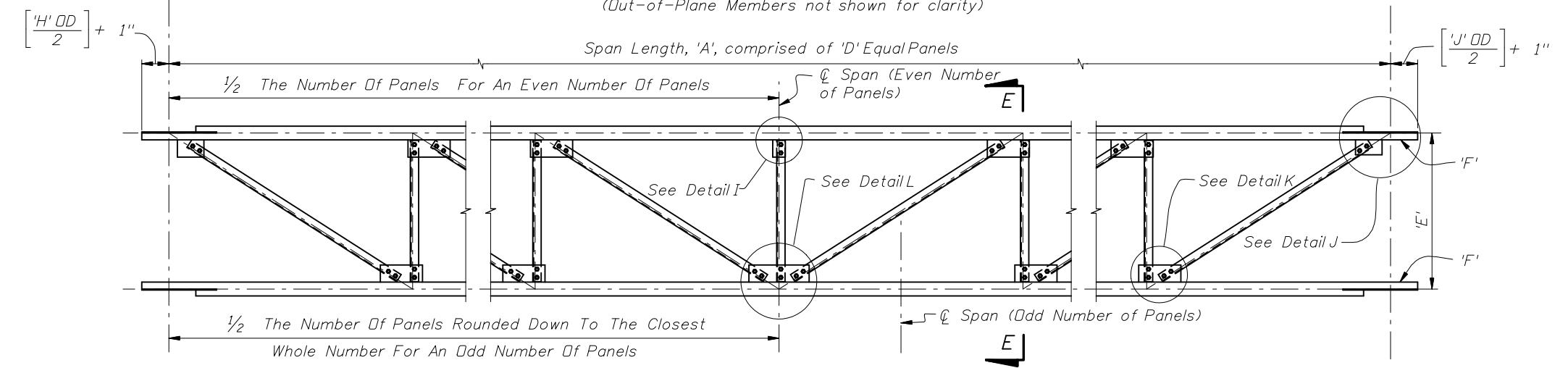
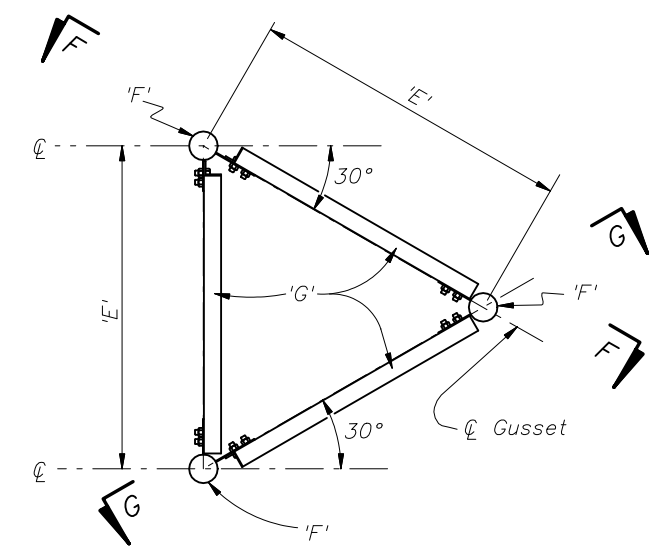
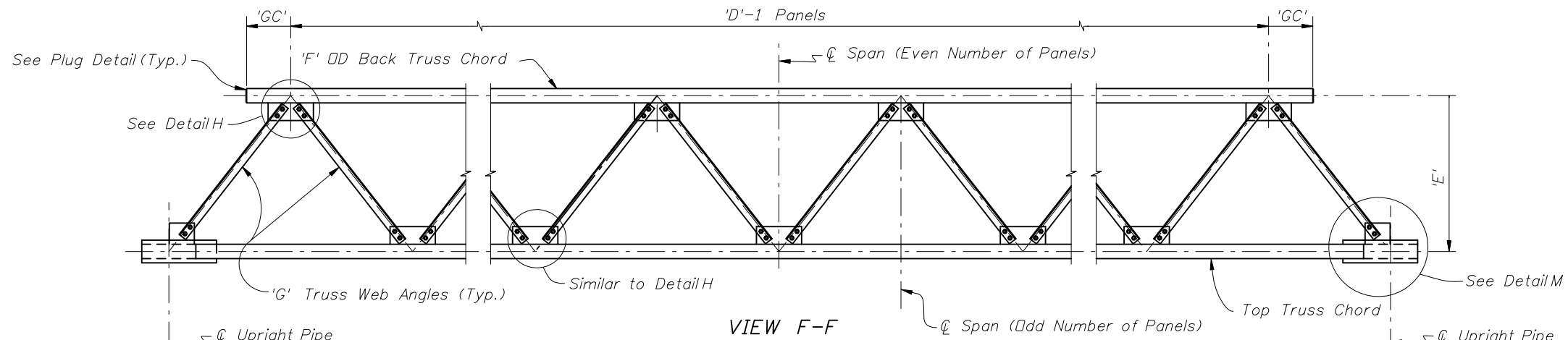
Provide 3/8" Ø all cotton sash
cord as weep hole wick. Prior to
grouting, attach cord to
interior of the upright such that
the end will extend beyond the
grout. Locate in plan, midway
between anchor bolts.



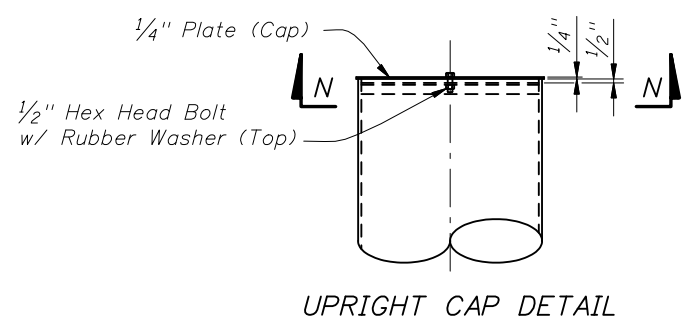
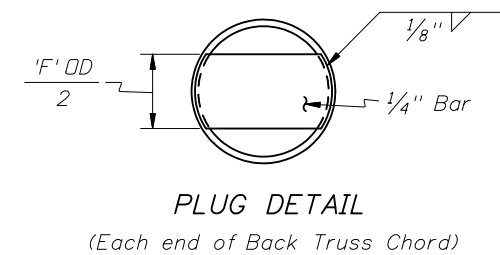
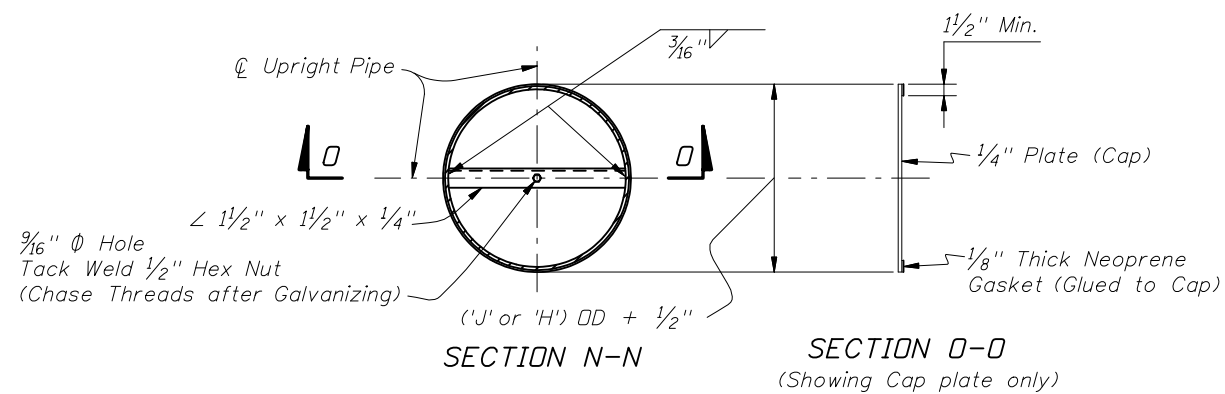
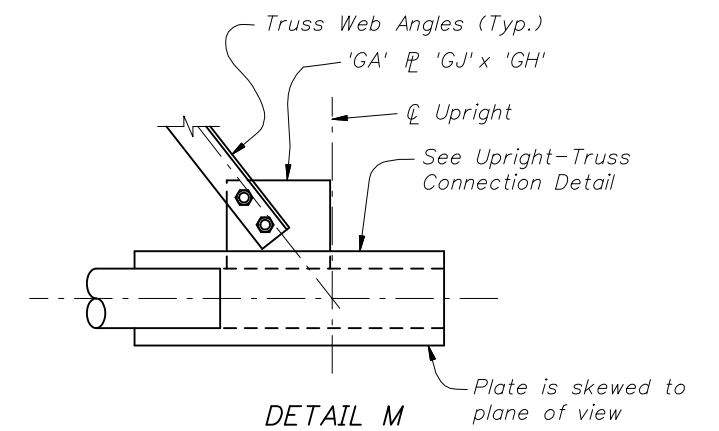
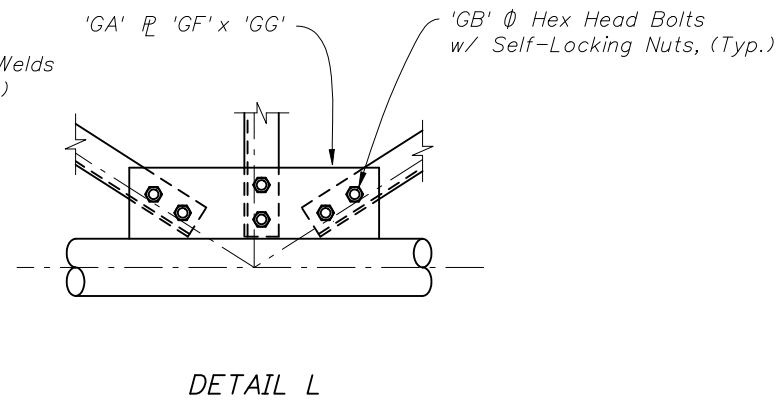
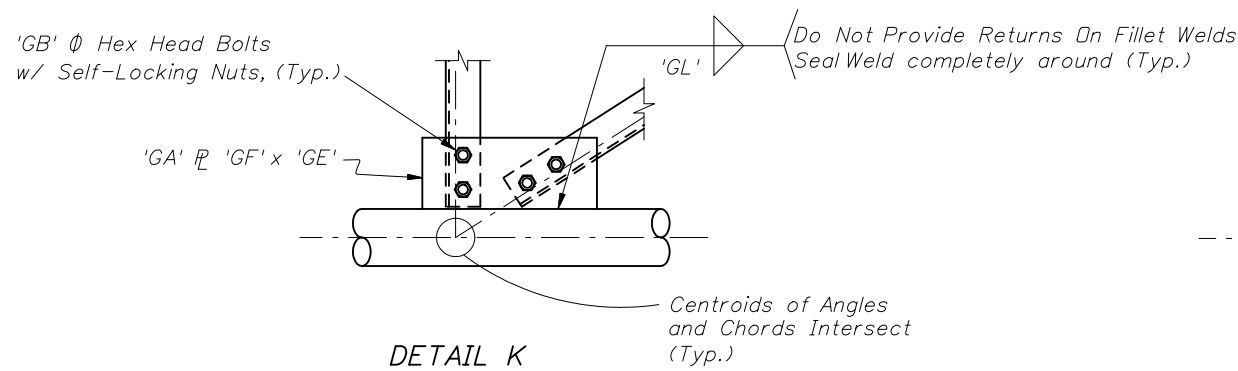
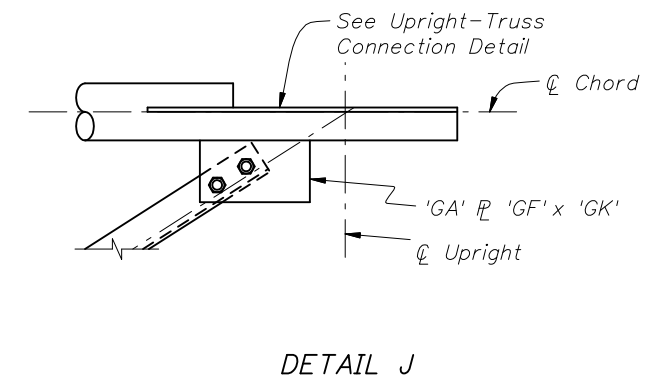
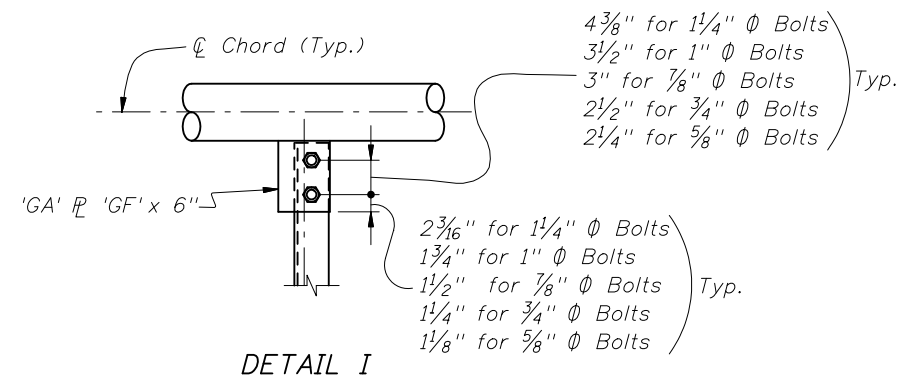
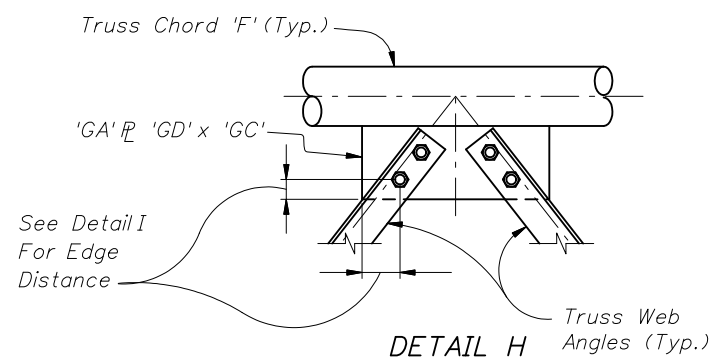
2008 FDOT Design Standards

SPAN SIGN STRUCTURE

Last Revision 07/01/05	Sheet No. 2 of 5
Index No. 11320	



NOTE:
Abbreviation
DD ~ Outside Diameter



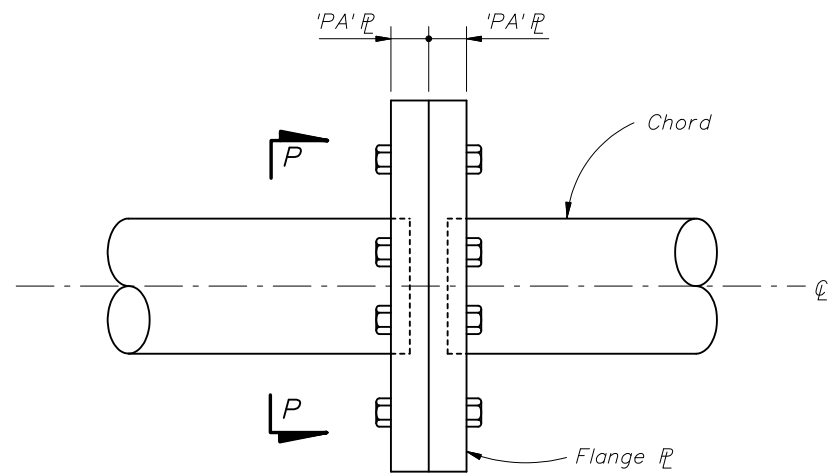
NOTE:
Abbreviation
OD ~ Outside Diameter



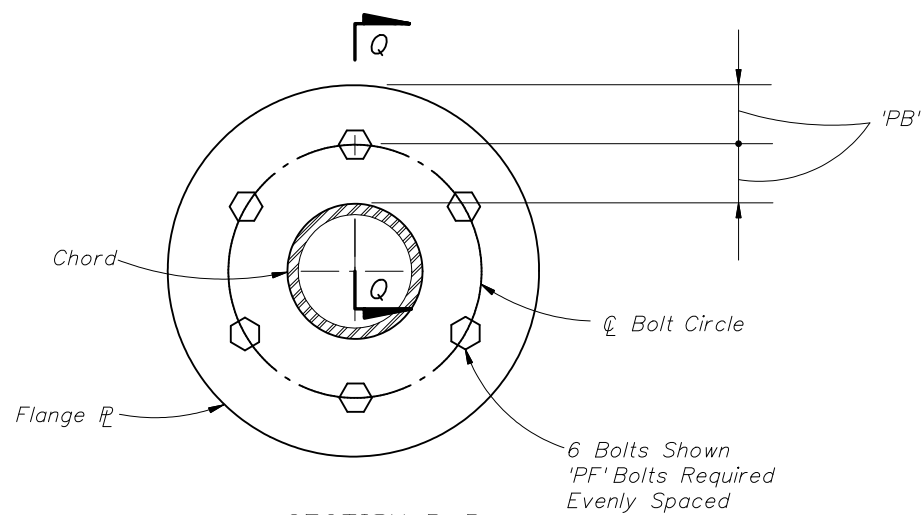
2008 FDOT Design Standards

SPAN SIGN STRUCTURE

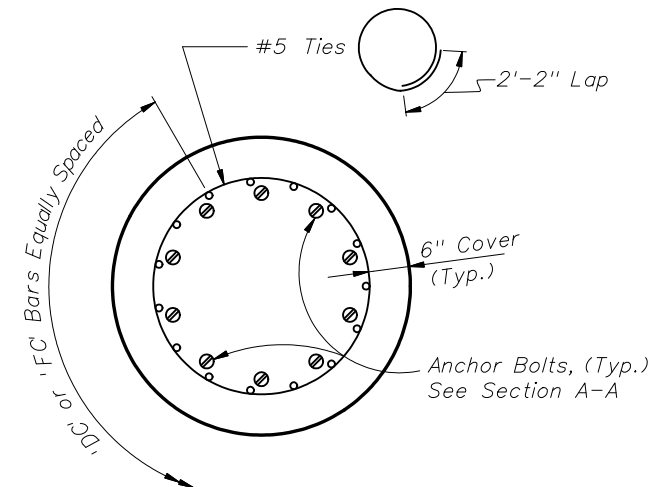
Last Revision	Sheet No.
07/01/05	4 of 5
Index No.	
11320	



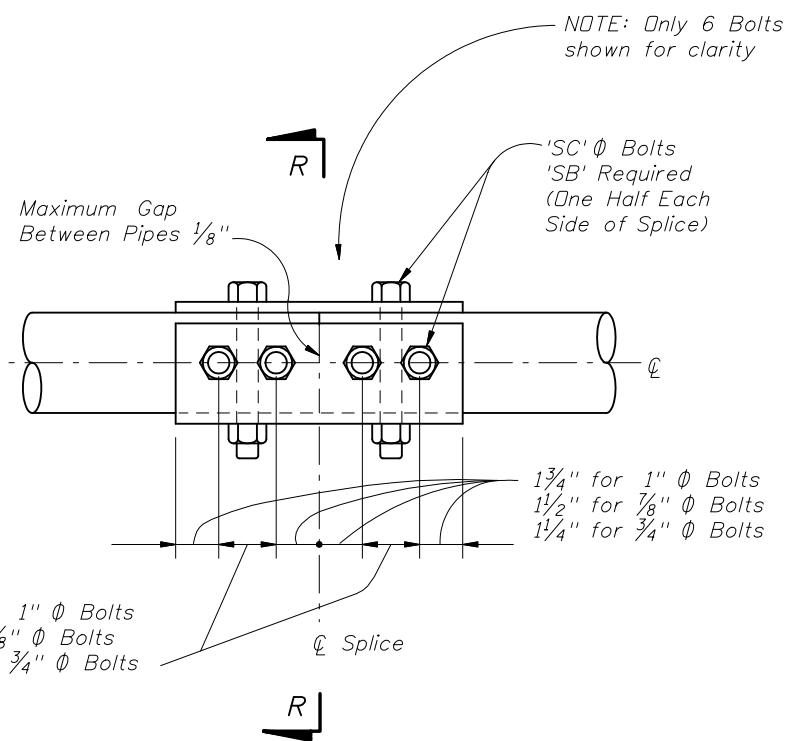
ELEVATION
ALTERNATE SPLICE CONNECTION



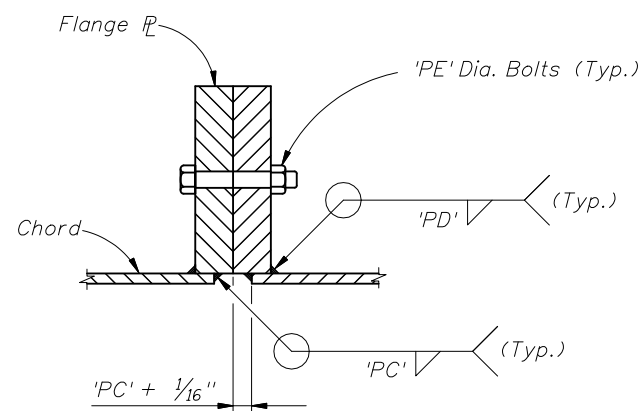
SECTION P-P



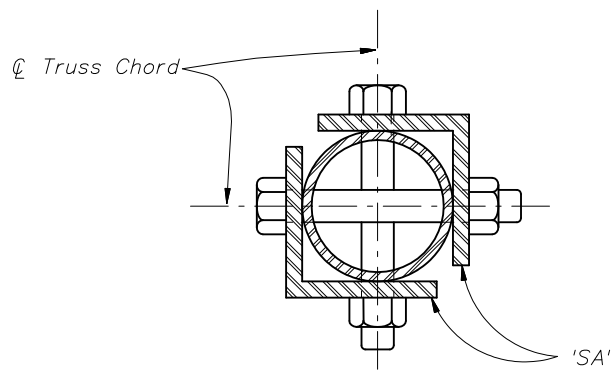
PLAN VIEW
DRILLED SHAFT



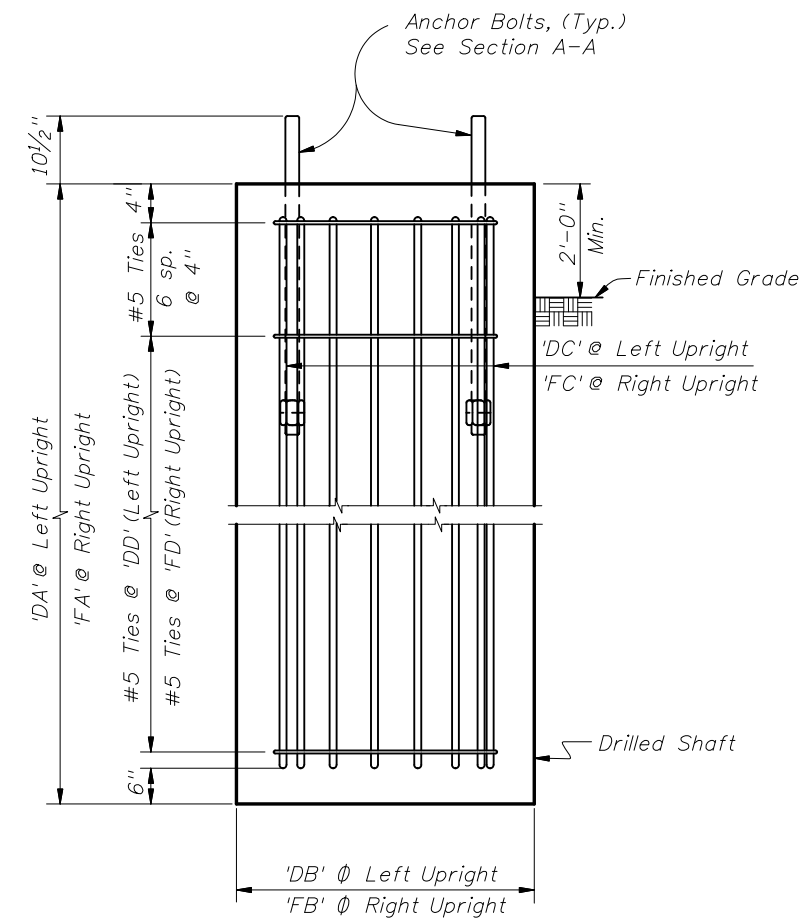
ELEVATION
SPLICE CONNECTION



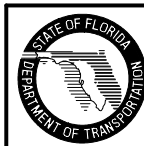
SECTION Q-Q



SECTION R-R



ELEVATION
DRILLED SHAFT



2008 FDOT Design Standards

SPAN SIGN STRUCTURE

Last Revision
01/01/07

Sheet No.
5 of 5

Index No.
11320