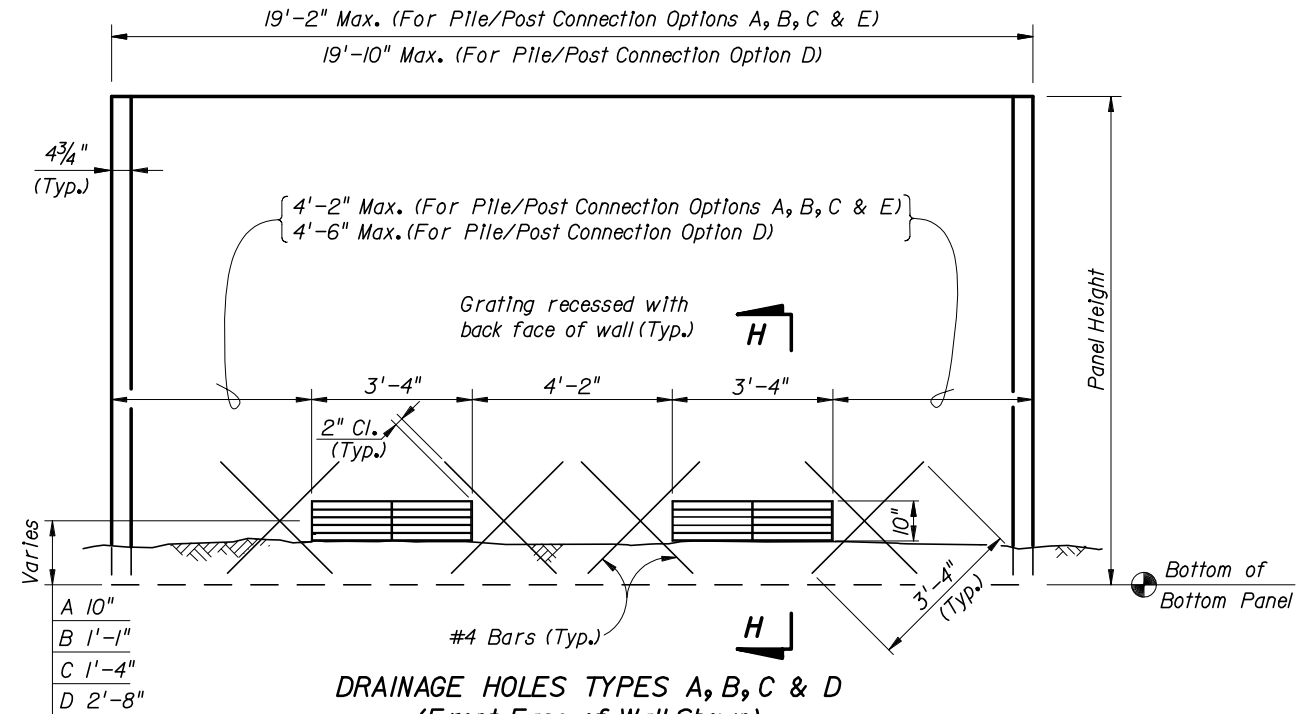


FIRE HOSE ACCESS HOLE TYPICAL DETAIL
 (Front Face of Wall Shown)
 (Flush Panel Option Shown
 Recessed Panel Option Similar)

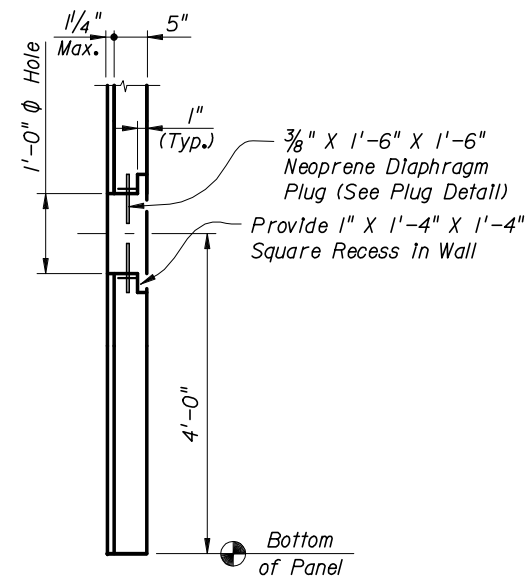
NOTE: Fire Hose Access Point to be located at or near fire hydrants



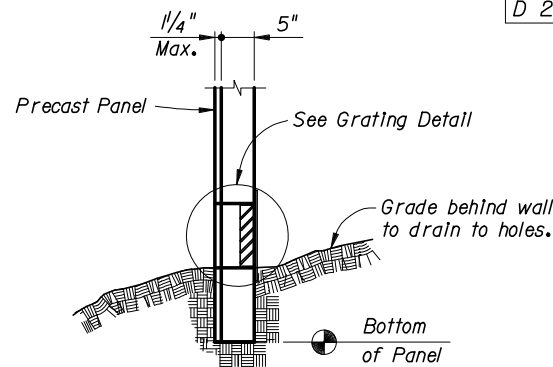
DRAINAGE HOLES TYPES A, B, C & D
 (Front Face of Wall Shown)
 (Flush Panel Option Shown
 Recessed Panel Option Similar)

NOTE: Place double mat of welded steel wire fabric in bottom 5'-0" of panels with drainage holes. Hole Types A, B, C and D refer to distance from bottom of panel to center of opening. See Wall Control Drawings.

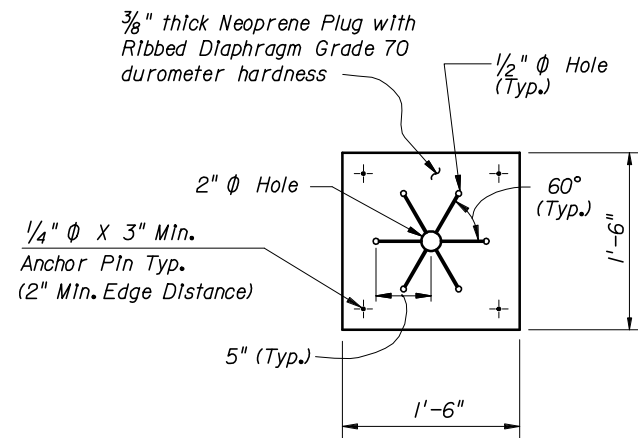
A	10"
B	1'-1"
C	1'-4"
D	2'-8"



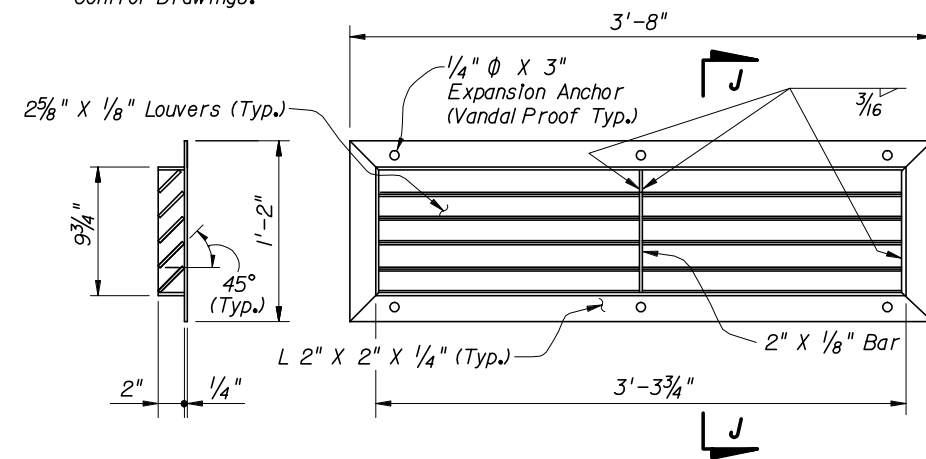
SECTION G-G
 (Flush Panel Option Shown
 Recessed Panel Option Similar)



SECTION H-H
 (Flush Panel Option Shown
 Recessed Panel Option Similar)



PLUG DETAIL



SECTION J-J GRATING DETAIL

NOTES:
 Grating shall be ASTM A 36 steel and shall be hot dip galvanized after assembly in accordance with ASTM Specification A 123.
 Expansion anchors shall be in accordance with ASTM A 307 (Galvanized).
 Welding shall be in accordance with the current edition of the ANSI/AWS D1.1 Welding Code.

