

VIEW A-A  
(shear key not shown)

**NOTES**

**SPECIFICATIONS:**  
 American Assoc. of State Highway and Transportation Officials (AASHTO) LRFD Bridge Design Specifications (current edition).  
 Florida Dept. of Transportation Structures Design Guidelines (current edition).  
 Florida Dept. of Transportation Standard Specifications for Road and Bridge Construction (current edition) and Supplements as amended.

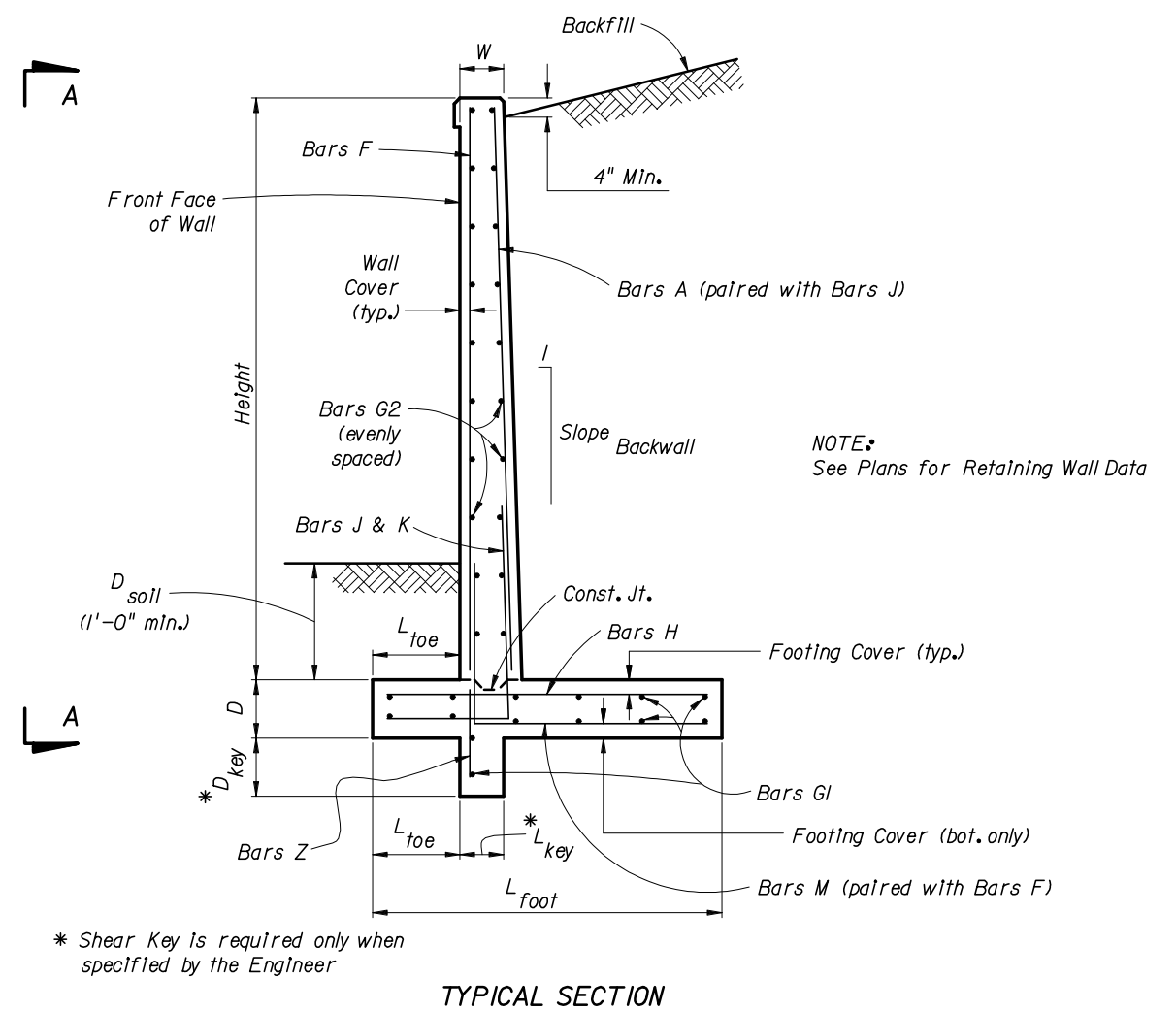
**MATERIALS:**  
 All reinforcing steel shall conform to ASTM A615 Grade 60.

**SURFACE FINISH:**  
 A Class 5 Applied Finish Coating shall be applied to the top of the wall and the exposed face above ground line.

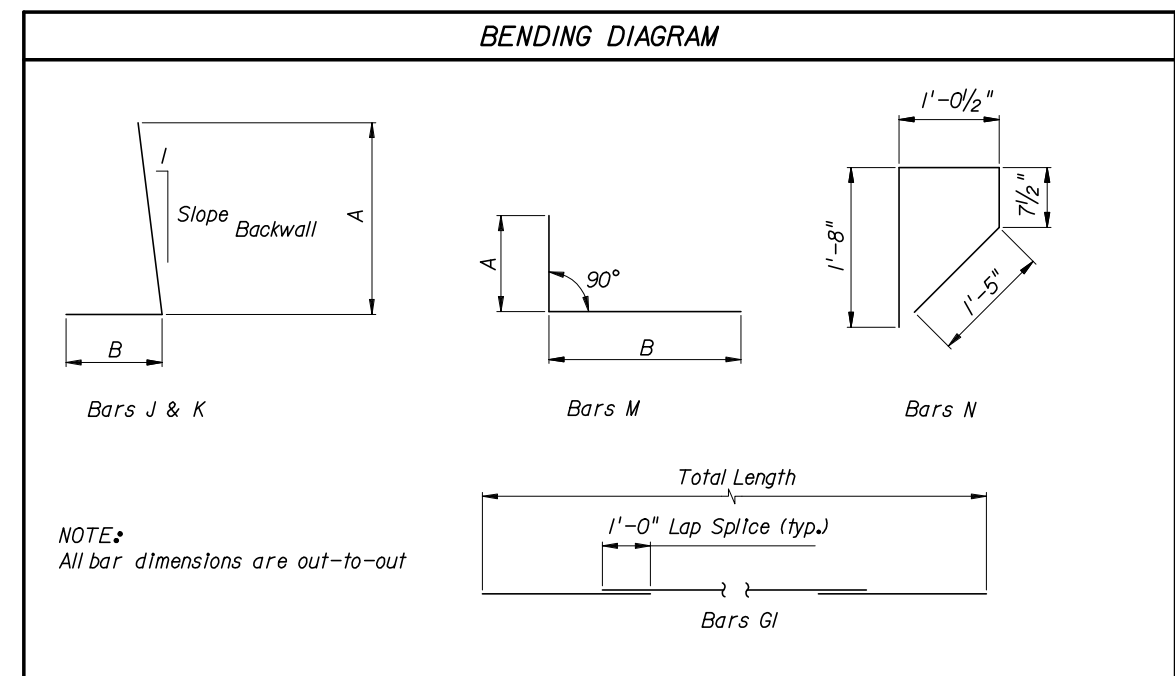
**ARCHITECTURAL TREATMENT:**  
 Alternate Architectural Treatments may be substituted for the Striated Pattern shown when approved by the Engineer.  
 Concrete required for Architectural Treatment is not included in the quantities.

**TRAFFIC RAILING BARRIER:**  
 If there is a Traffic Railing Barrier on the wall, Wall Joints and Barrier V-Grooves shall align and Wall Expansion Joints and Barrier Open Joints shall align.

**PAYMENT:**  
 All Retaining Wall costs, including all miscellaneous costs, shall be paid for at the unit contract price for either Class II, III or IV Concrete (Retaining Walls) (CY) and Reinforcing Steel (Retaining Walls) (LBS). Retaining Wall quantities shall not include concrete nor reinf. steel for Traffic Railing Barrier. Traffic Railing Barrier (including Bars 5V) shall be paid for under Concrete Traffic Railing Barrier (Bridge).



TYPICAL SECTION



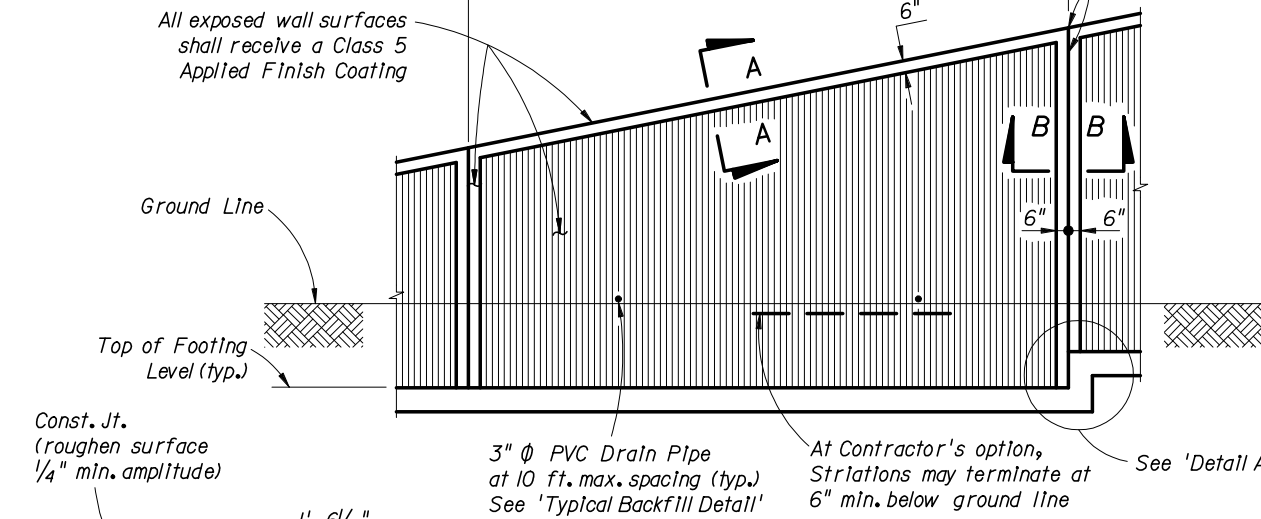
2006 FDOT Design Standards

RETAINING WALL - CAST IN PLACE

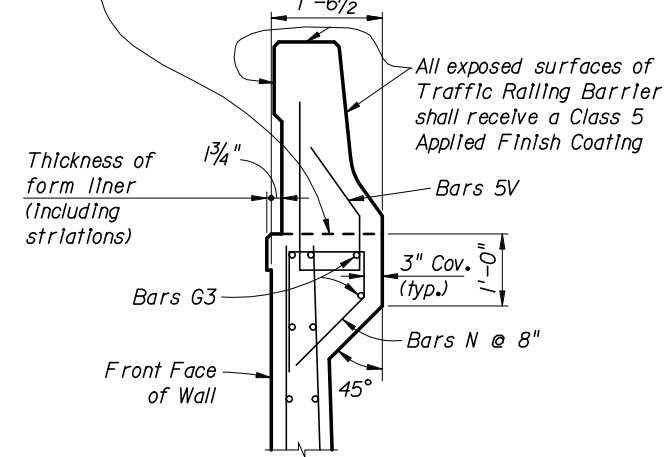
Last Revision	Sheet No.
07/01/05	1 of 2
Index No.	
5100	

\*\* Wall Joint spacing 25 ft. maximum.  
At minimum, every fourth wall joint  
to be an expansion joint.  
See Plans for actual wall joint spacing  
and expansion joint location.

3/4" V-Groove across top and down  
front face of wall at joint (typ.).  
Extend V-Groove down back of wall  
to 6" min. below ground.  
(see 'V-Groove Detail')

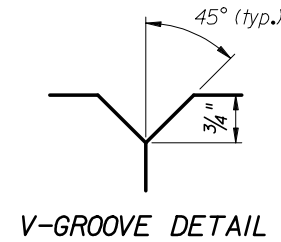


FRONT ELEVATION

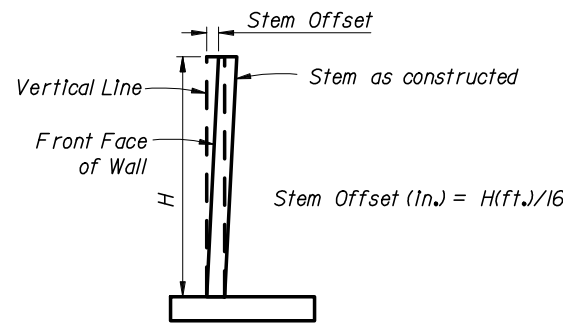


BARRIER ON WALL DETAIL

(for Traffic Railing Barrier details see Index No. 420)

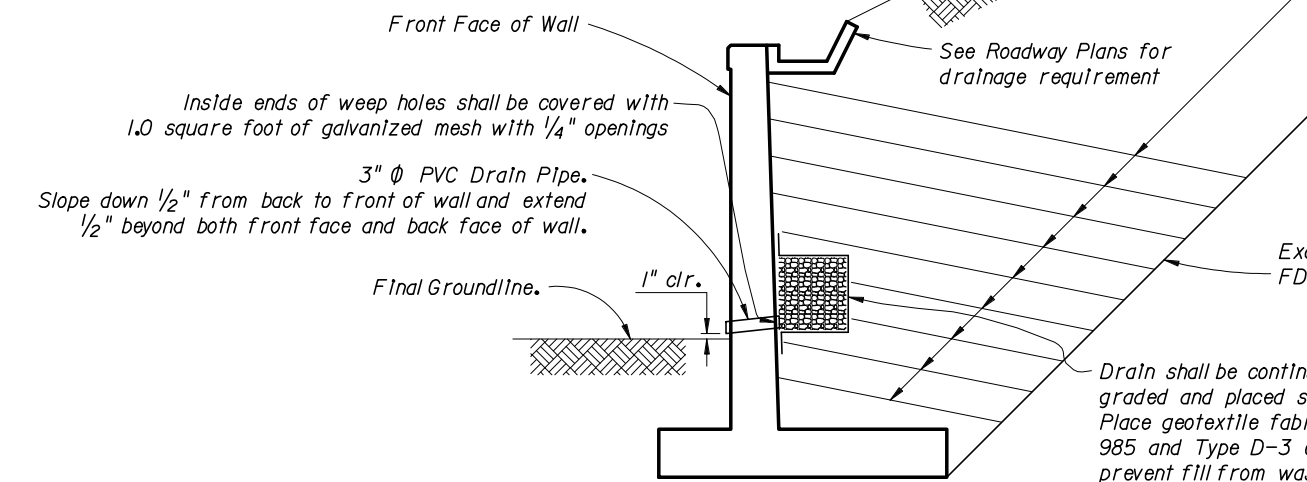


V-GROOVE DETAIL

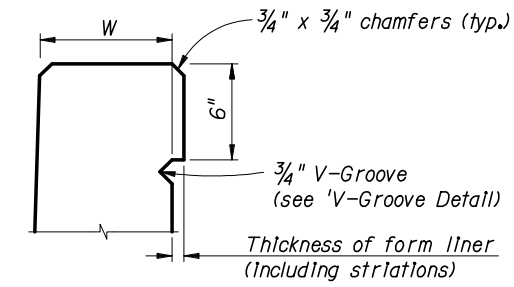


STEM OFFSET VALUES  
(for H < 20 ft.)

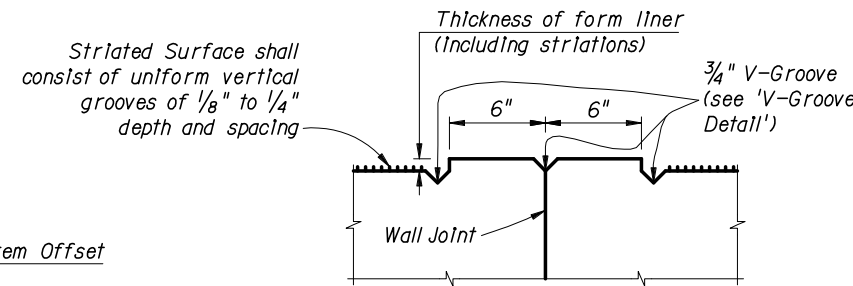
Backfill layers to be sloped both transversely  
and longitudinally as necessary to drain and  
prevent ponding during backfilling.  
Backfilling shall comply with FDOT Specifications.



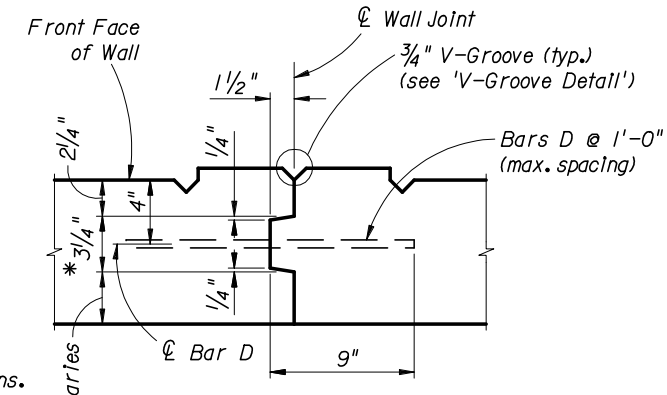
TYPICAL BACKFILL DETAIL



SECTION A-A

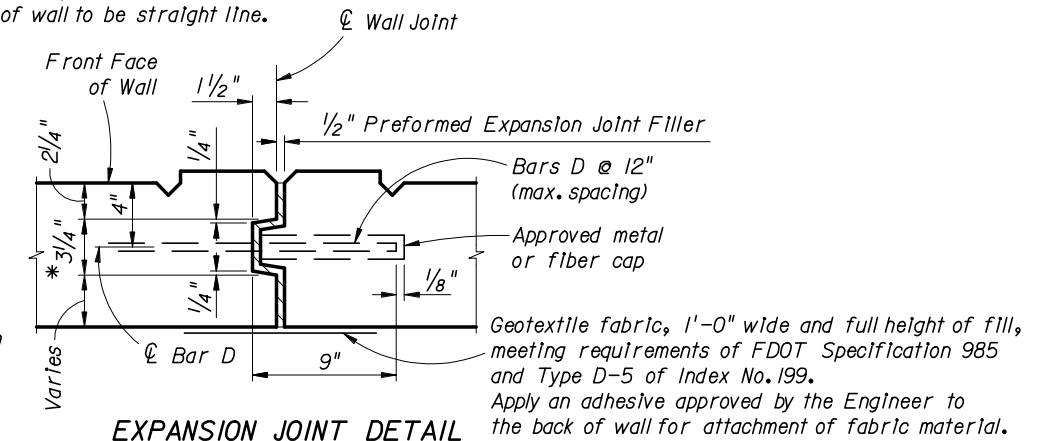


SECTION B-B

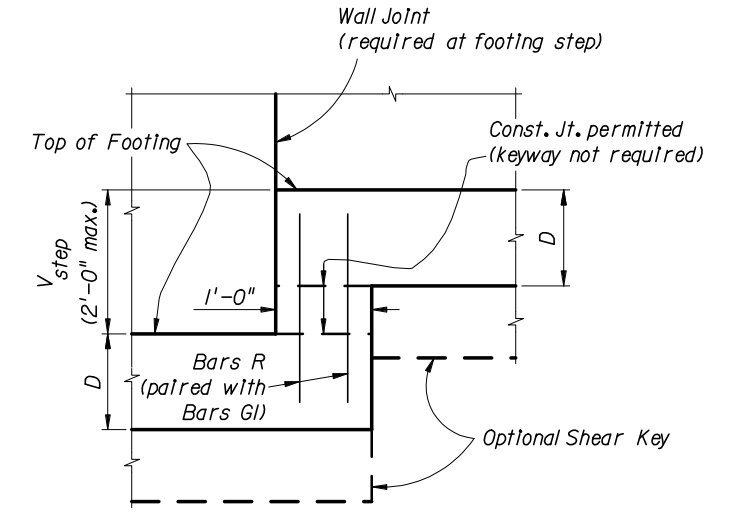


WALL JOINT DETAIL

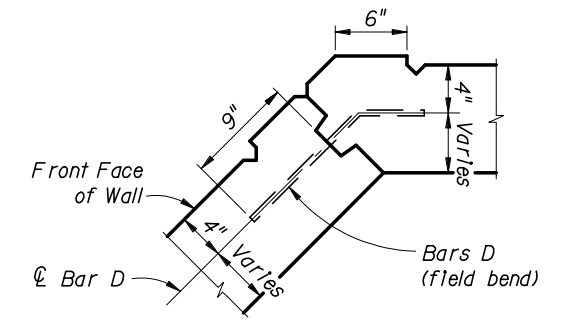
\* Key to stop 6" from top of wall.  
Joint across top of wall to be straight line.



EXPANSION JOINT DETAIL



DETAIL A



TYPICAL CORNER JOINT DETAIL



2006 FDOT Design Standards

RETAINING WALL - CAST IN PLACE

Last Revision	Sheet No.
07/01/05	2 of 2
Index No.	
5100	