

**"E" Joints Required When Length Exceeds 30'
SAWED JOINTS

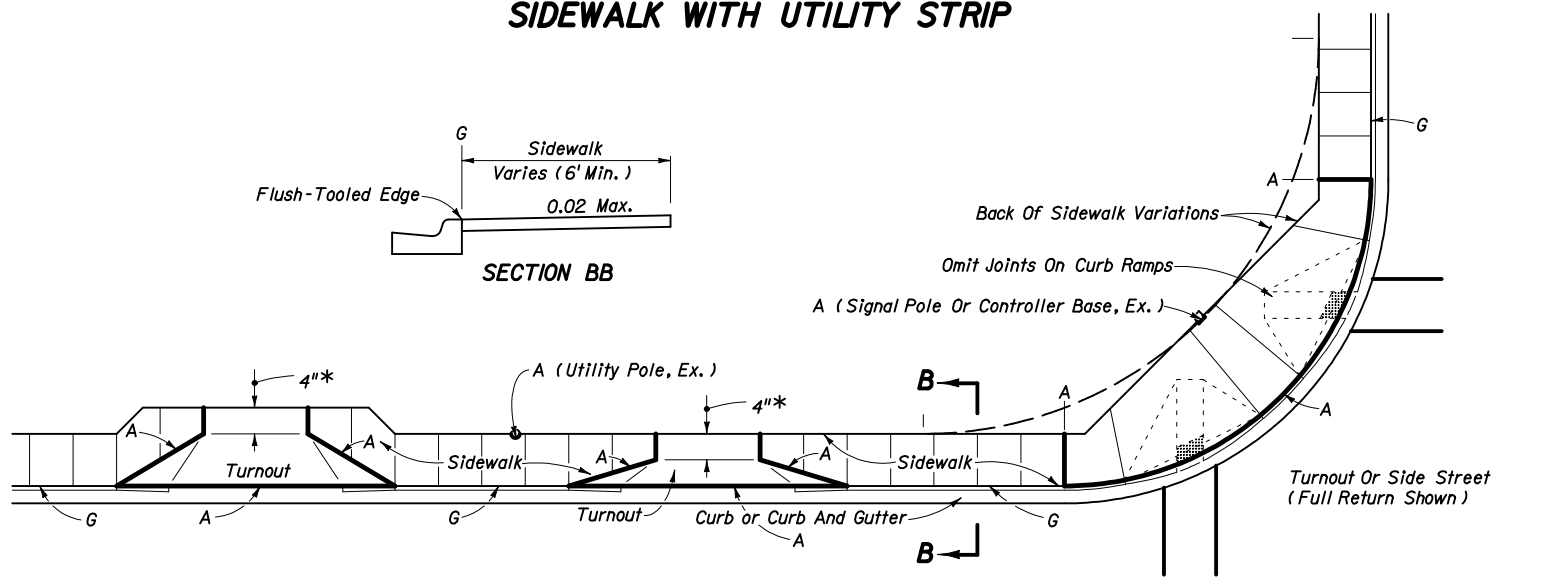
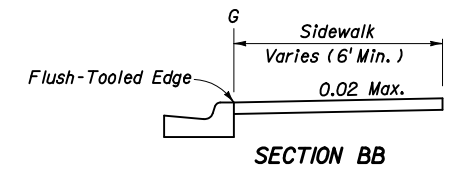
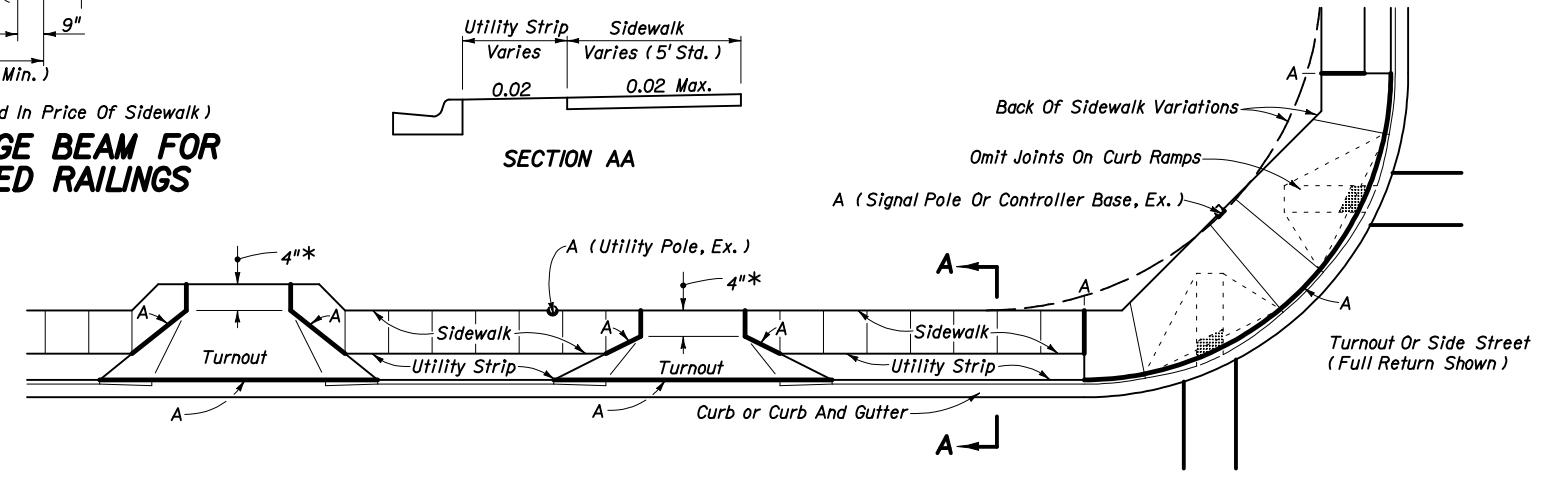
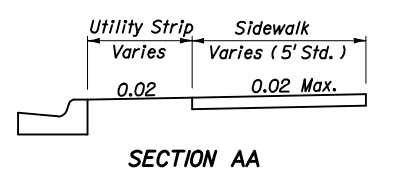
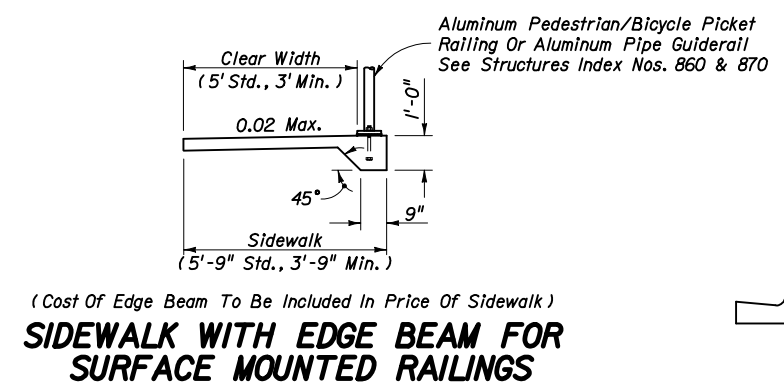
OPEN JOINTS
EXAGGERATED SCALE
LONGITUDINAL SECTION
SIDEWALK JOINTS

JOINT LEGEND

- A- $\frac{1}{2}$ " Expansion Joints (Preformed Joint Filler)
- B- $\frac{1}{8}$ " Dummy Joints, Tooled
- C- $\frac{1}{8}$ " Formed Open Joints
- D- $\frac{3}{16}$ " Saw Cut Joints, $1\frac{1}{2}$ " Deep (96 Hour) Max. 5' Centers
- E- $\frac{3}{16}$ " Saw Cut Joints, $1\frac{1}{2}$ " Deep (12 Hour) Max. 30' Centers
- F- $\frac{1}{2}$ " Expansion Joint When Run Of Sidewalk Exceeds 120'. Intermediate locations when called for in the plans or at locations as directed by the Engineer.
- G- Cold Joint With Bond Breaker, Tooled

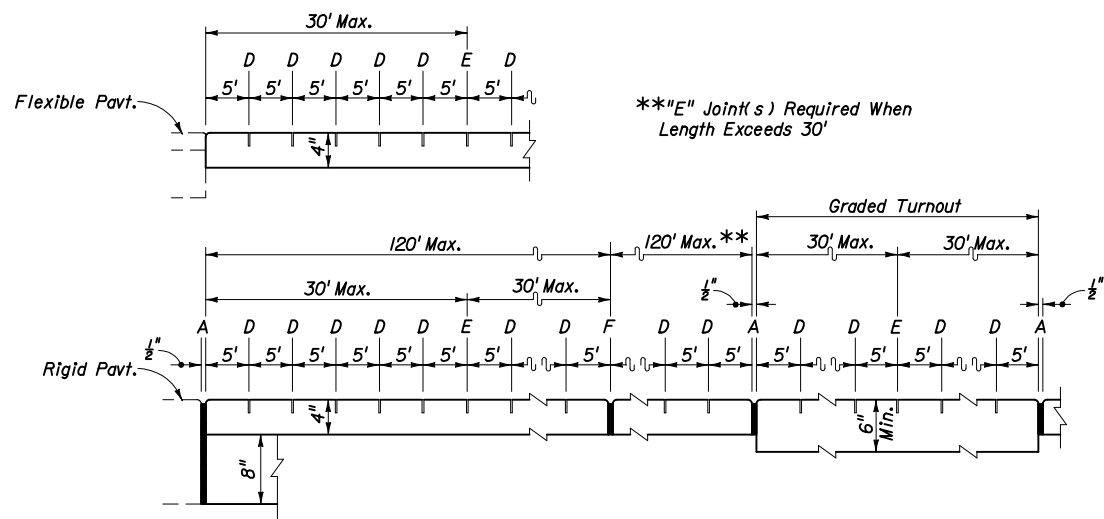
NOTES FOR CONCRETE SIDEWALK ON CURBED ROADWAYS

1. Sidewalks shall be constructed in accordance with Section 522 of the FDOT Standard Specifications except for public sidewalk curb ramp runs which shall be finished in accordance with Index No. 304.
2. Bond breaker material can be any impermeable coated or sheet membrane or preformed material having a thickness of not less than 6 mils nor more than $\frac{1}{2}$ ".
3. For public sidewalk curb ramps see Index No. 304.
4. For turnouts see Index No. 515.
5. Construct sidewalks with 1" thick Edge Beam through the limits of any surface mounted Aluminum Pedestrian/Bicycle Picket Railing or Pipe Guiderail shown in the plans.
6. Sidewalk shall be paid for under the contract unit price for Sidewalk Concrete (___ Thick), S.Y.

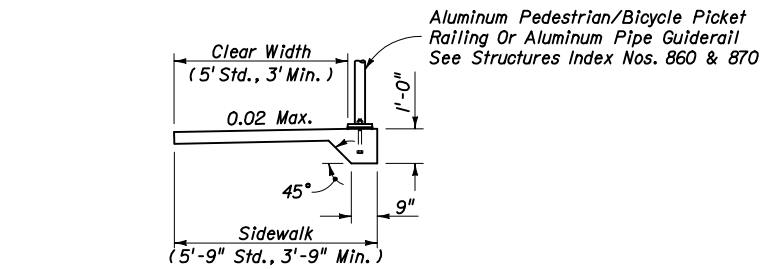


* 4", May Be Reduced To 3" In Restricted Conditions When Approved By The Engineer

CONCRETE SIDEWALK FOR CURBED ROADWAYS



***E" Joint(s) Required When Length Exceeds 30'

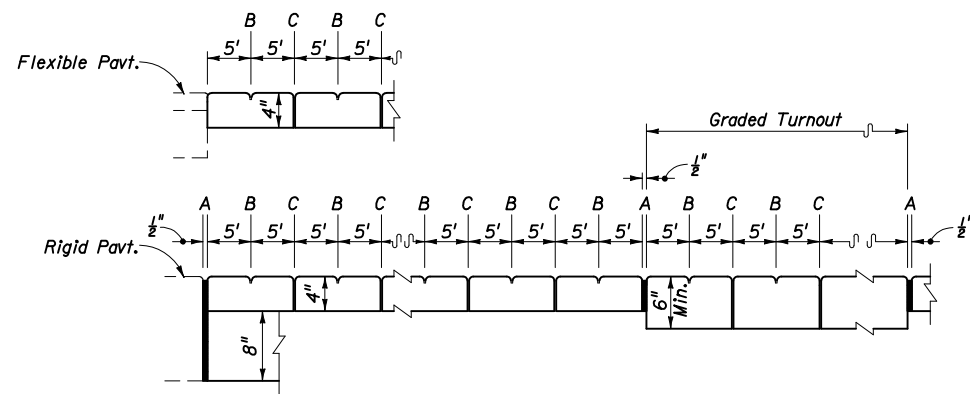


(Cost Of Edge Beam To Be Included In Price Of Sidewalk)
SIDEWALK WITH EDGE BEAM FOR SURFACE MOUNTED RAILINGS

NOTES FOR CONCRETE SIDEWALKS ON UNCURBED ROADWAYS

1. Sidewalks shall be constructed in accordance with Section 522 of the FDOT Standard Specifications.
2. Sidewalks adjoining driveways 24' and wider, right in-right out composite driveways and side roads and streets shall have a detectable warning surface that extends the full width of the sidewalk and in the direction of travel 24" (610 mm) from the edge of driveways and edge of side roads and streets. Detectable warning surfaces shall conform to the requirements described in the General Notes on Index No. 304.
 For sidewalks continuous through driveways, detectable warning surfaces are not required.
3. For turnouts see Index No. 515.
4. Construct sidewalks with 1" thick Edge Beam through the limits of any surface mounted Aluminum Pedestrian/Bicycle Picket Railing or Pipe Guiderail shown in the plans.
5. Sidewalk shall be paid for under the contract unit price for Sidewalk Concrete (___ Thick), SY.

SAWED JOINTS

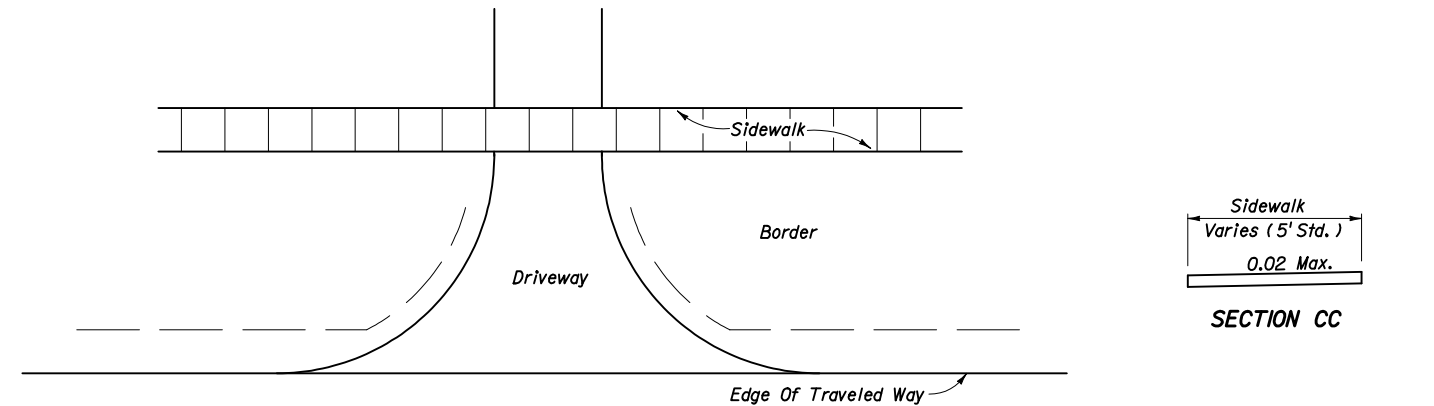


OPEN JOINTS

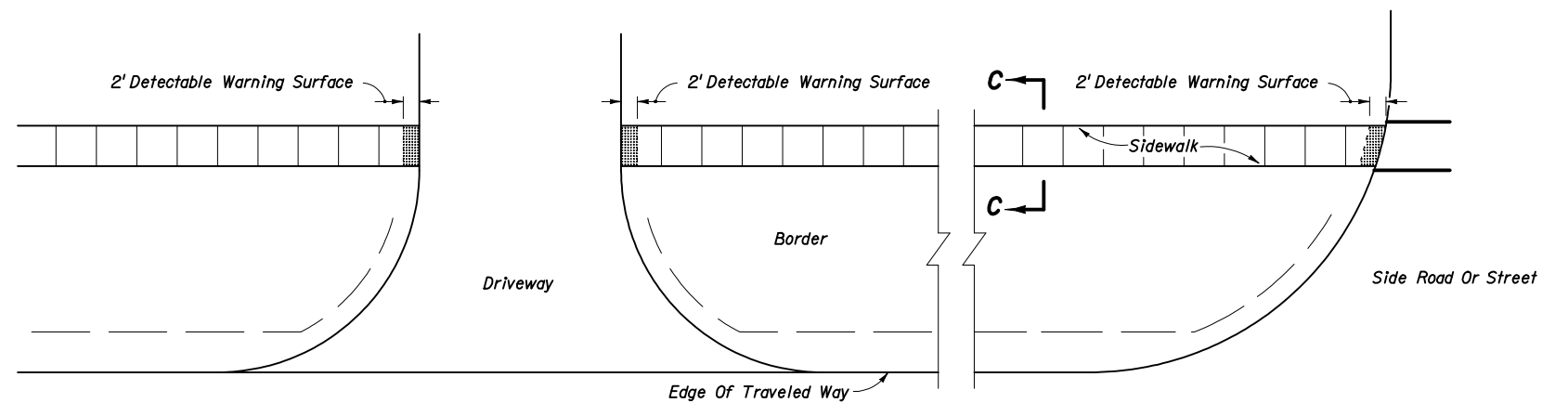
EXAGGERATED SCALE
**LONGITUDINAL SECTIONS
 SIDEWALK JOINTS**

JOINT LEGEND

- A- 1/2" Expansion Joints (Preformed Joint Filler)
- B- 1/8" Dummy Joints, Tooled
- C- 1/8" Formed Open Joints
- D- 3/8" Saw Cut Joints, 1 1/2" Deep (96 Hour) Max. 5' Centers
- E- 3/8" Saw Cut Joints, 1 1/2" Deep (12 Hour) Max. 30' Centers
- F- 1/2" Expansion Joint When Run Of Sidewalk Exceeds 120'. Intermediate locations when called for in the plans or at locations as directed by the Engineer.



CONTINUOUS SIDEWALK



DISCONTINUOUS SIDEWALK

PLAN

CONCRETE SIDEWALK FOR UNCURBED ROADWAYS



2006 FDOT Design Standards

CONCRETE SIDEWALK

Last Revision	Sheet No.
07/01/05	2 of 2
Index No.	
310	