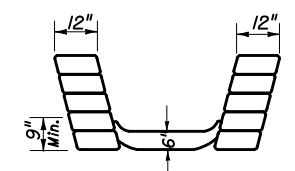
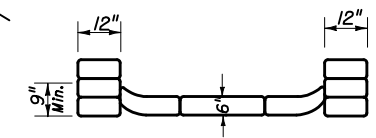


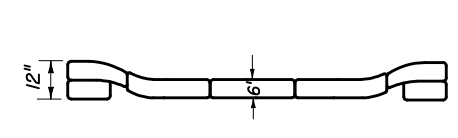
SECTION AA



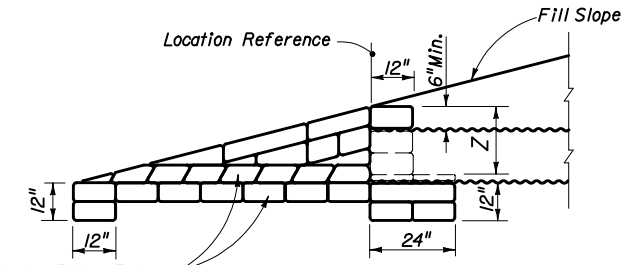
SECTION BB



SECTION CC



SECTION DD

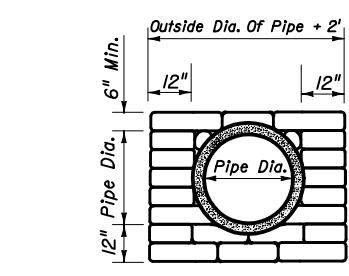


SECTION EE

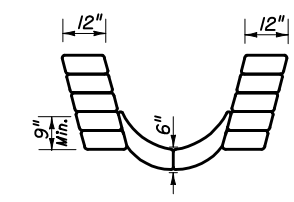
Place Plastic Filter Fabric Type D-4 (See Index No. 199) Around And Below Sand Cement Riprap. Cost Of Fabric To Be Included In Cost Of Sand Cement Riprap

ISOMETRIC

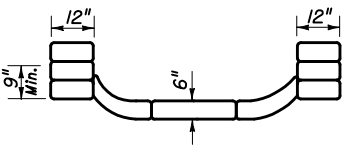
ISOMETRIC



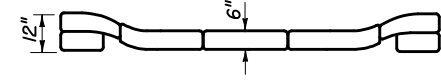
SECTION AA



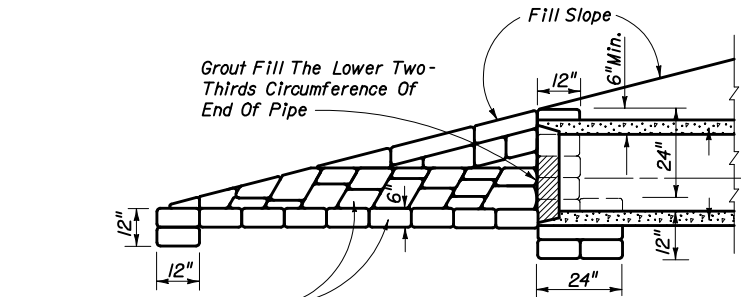
SECTION BB



SECTION CC



SECTION DD



SECTION EE

Place Plastic Filter Fabric Type D-4 (See Index No. 199) Around And Below Sand Cement Riprap. Cost Of Fabric To Be Included In Cost Of Sand Cement Riprap

DETAIL FOR SINGLE PIPE CULVERT

Note: For multiple pipe culvert spacing between pipe centers = X

**DETAILS FOR SINGLE METAL PIPE ARCH CULVERTS**

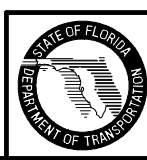
NOTE: For multiple metal pipe arch culvert spacing between arch centers = X

		DIMENSIONS AND QUANTITIES FOR METAL PIPE ARCH CULVERTS																		
Span	Rise	Dimensions							Quantity of Sand-Cement Riprap in Cu. Yds. for One Endwall											
		X				Y			Z			For 1:2 Slopes			For 1:4 Slopes			For 1:6 Slopes		
		1-Arch	2-Arch	3-Arch	4-Arch	1-Arch	2-Arch	3-Arch	1-Arch	2-Arch	3-Arch	1-Arch	2-Arch	3-Arch	1-Arch	2-Arch	3-Arch	4-Arch		
17"	13"	2'-6"	6'-6"	9'-0"	11'-6"	14'-0"	1'-7"	1.0	1.5	2.0	2.5	1.5	2.2	2.9	3.6					
21"	15"	2'-10"	7'-6"	10'-4"	13'-2"	16'-0"	1'-9"	1.2	1.8	2.4	3.0	1.9	2.7	3.5	4.3					
28"	20"	3'-5"	9'-3"	12'-8"	16'-1"	19'-6"	2'-0"	1.7	2.5	3.3	4.1	2.6	3.7	4.8	5.9					
35"	24"	4'-0"	11'-0"	15'-0"	19'-0"	23'-0"	2'-0"	2.2	3.1	4.0	4.9	3.4	4.7	6.0	7.3					
42"	29"	4'-9"	12'-9"	17'-6"	22'-3"	27'-0"	2'-0"	2.9	4.1	5.3	6.5	4.5	6.1	7.7	9.3					
49"	33"	5'-6"	14'-6"	20'-0"	25'-6"	31'-0"	2'-0"	3.5	4.9	6.3	7.7	5.5	7.4	9.3	11.2					
57"	38"	6'-4"	16'-6"	22'-10"	29'-2"	35'-6"	2'-0"	4.4	6.1	7.8	9.5	6.9	9.2	11.5	13.8					
64"	43"	7'-1"	18'-3"	25'-4"	32'-5"	39'-6"	2'-0"	5.1	7.0	8.9	10.8	8.1	10.7	13.3	15.9					
71"	47"	7'-10"	20'-0"	27'-10"	35'-8"	43'-6"	2'-0"	5.9	8.1	10.3	12.5	9.5	12.4	15.3	18.2					

**GENERAL NOTES**

1. U-Type Sand-Cement Endwalls Are Intended For Use Outside The Clear Zone.

		DIMENSIONS AND QUANTITIES FOR ROUND PIPE CULVERTS															
Pipe Dia.	X	Dimensions				Quantity of Sand-Cement Riprap in Cu. Yds. for One Endwall											
		Y				For 1:2 Slopes				For 1:4 Slopes				For 1:6 Slopes			
		1-Pipe	2-Pipes	3-Pipes	4-Pipes	1-Pipe	2-Pipes	3-Pipes	4-Pipes	1-Pipe	2-Pipes	3-Pipes	4-Pipes	1-Pipe	2-Pipes	3-Pipes	4-Pipes
15"	2'-7"	7'-0"	9'-7"	12'-2"	14'-9"	1.2	1.6	2.1	2.6	1.7	2.4	3.0	3.6				
18"	2'-10"	8'-0"	10'-10"	13'-8"	16'-6"	1.4	2.0	2.6	3.1	2.1	2.9	3.7	4.4				
24"	3'-5"	10'-0"	13'-5"	16'-10"	20'-3"	1.9	2.7	3.5	4.3	2.9	4.0	5.1	6.3				
30"	4'-3"	12'-0"	16'-3"	20'-6"	24'-9"	2.5	3.6	4.8	5.9	3.8	5.4	7.0	8.6				
36"	5'-1"	14'-0"	19'-1"	24'-2"	29'-3"	3.1	4.6	6.2	7.7	4.8	7.0	9.2	11.4				
42"	6'-0"	16'-0"	22'-0"	28'-0"	34'-0"	3.8	5.8	7.7	9.7	6.0	8.8	11.7	14.5				
48"	6'-9"	18'-0"	24'-9"	31'-6"	38'-3"	4.5	7.0	9.4	11.8	7.2	10.8	14.3	17.9				
54"	7'-8"	20'-0"	27'-8"	35'-4"	43'-0"	5.3	8.3	11.3	14.2	8.5	12.9	17.3	21.7				
60"	8'-6"	22'-0"	30'-6"	39'-0"	47'-6"	6.2	9.7	13.3	16.9	10.0	15.3	20.6	25.9				



2006 FDOT Design Standards

**U-TYPE SAND-CEMENT ENDWALLS**

Last Revision	Sheet No.
00	1 of 1
Index No.	
268	