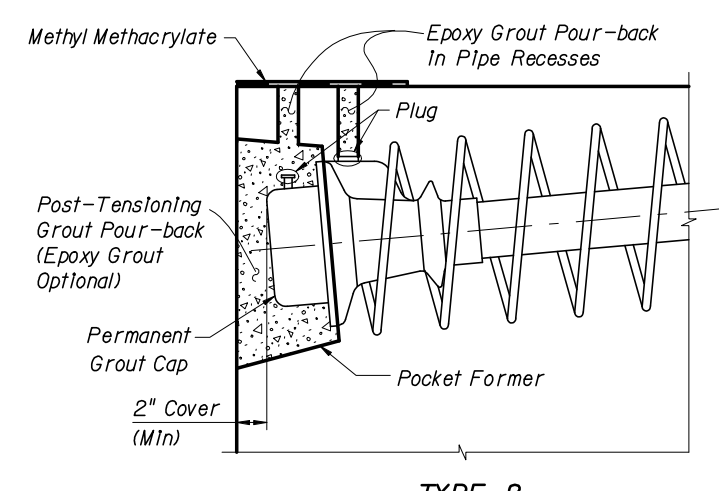


TYPE IA

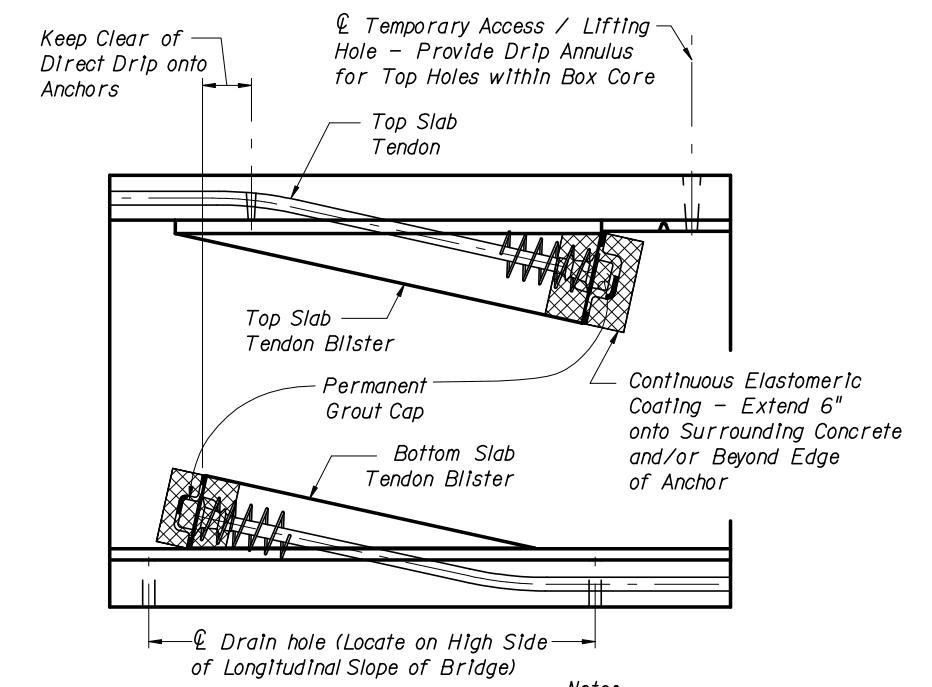
TYPE IB

DETAIL - TYPICAL ALTERNATE POUR-BACK TREATMENTS FOR ANCHOR PROTECTION ON EXPOSED SURFACES AND EXPANSION JOINTS



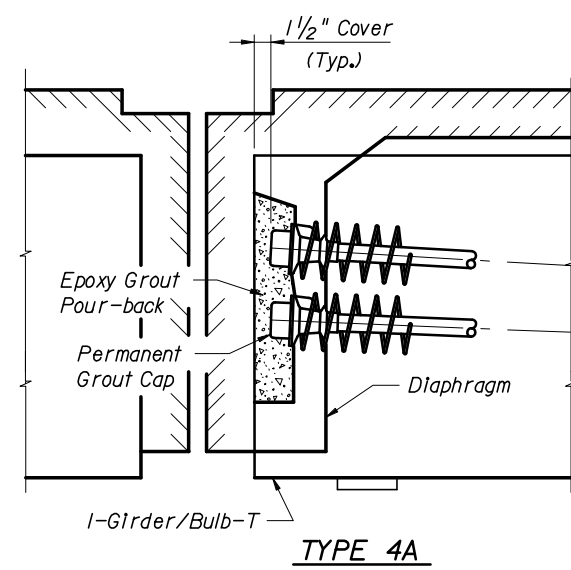
TYPE 2

DETAIL - TOP INSPECTED ANCHOR PROTECTION

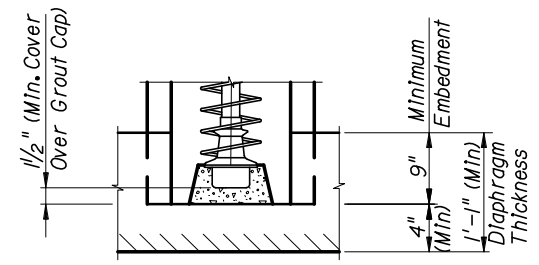


TYPE 3

DETAIL - ANCHOR PROTECTION FOR INTERIOR ANCHORS IN CELLULAR BOXES ON BLISTERS OR PIER SEGMENTS (NOT FOR USE IN EXPANSION JOINTS)

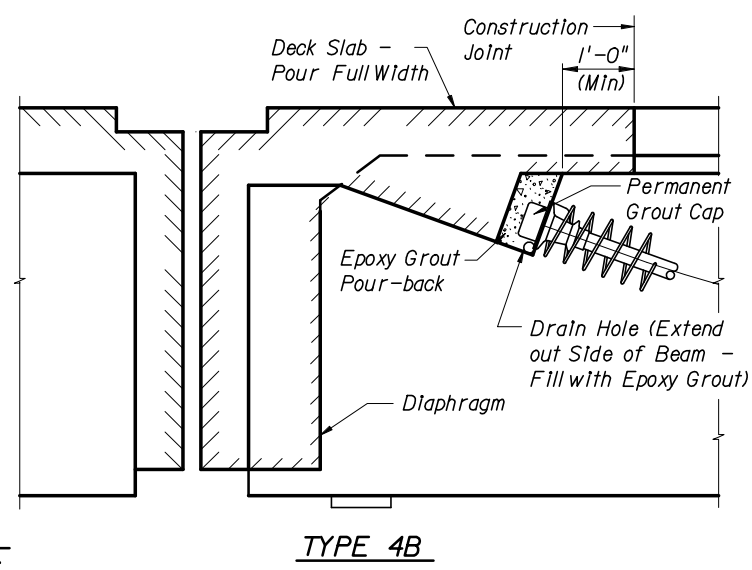


TYPE 4A

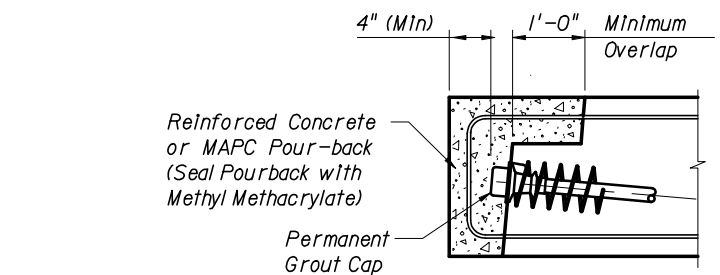


TYPE 4A

DETAIL - ANCHOR PROTECTION FOR POST-TENSIONED I-GIRDERS & BULB-T'S

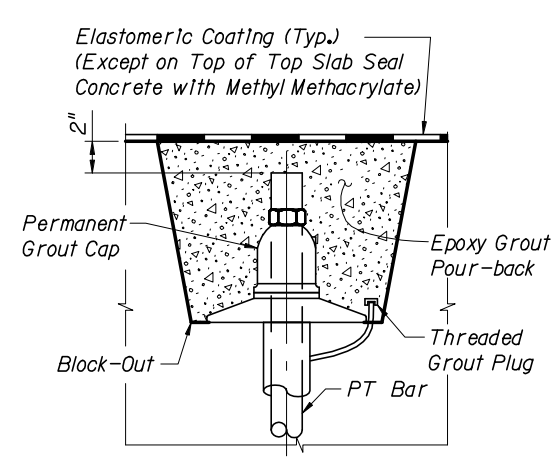


TYPE 4B

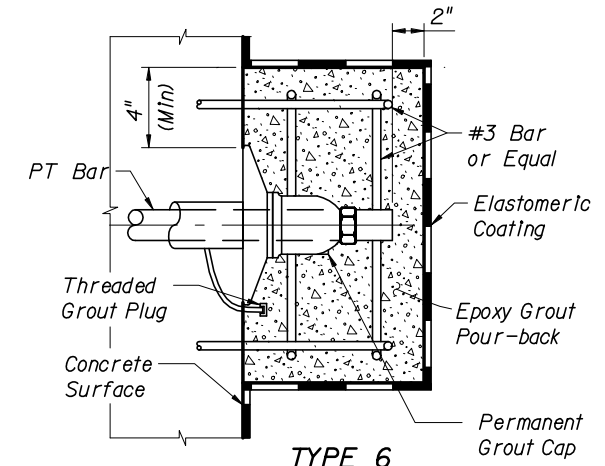


TYPE 8

DETAIL - FLAT SLAB ANCHOR PROTECTION

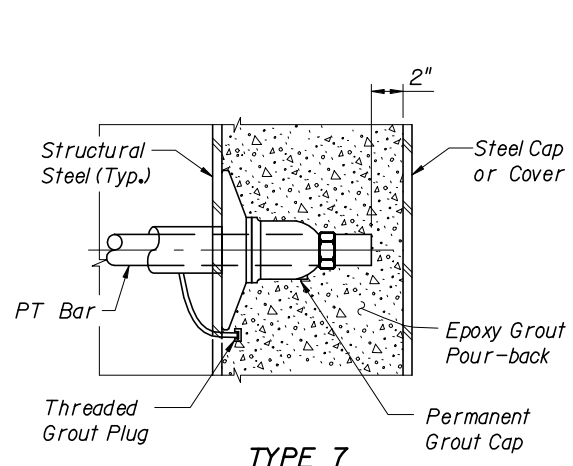


TYPE 5



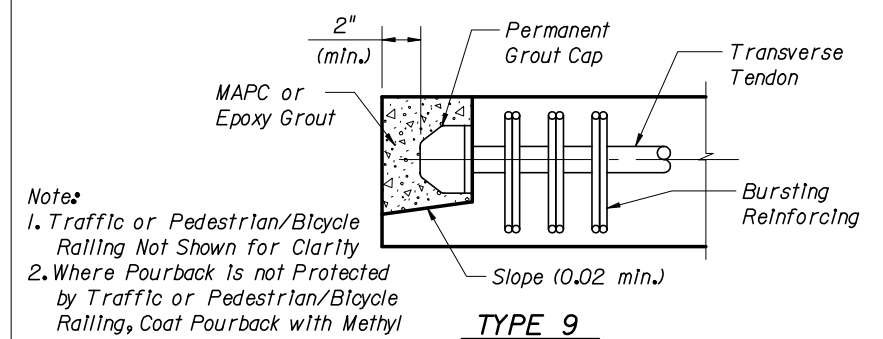
TYPE 6

DETAIL - ANCHOR PROTECTION FOR PT BARS



TYPE 7

Note: Extend elastomeric coating 12" onto concrete edges or 12" beyond edge of anchor pour-back



TYPE 9

DETAIL - TRANSVERSE TENDON ANCHOR PROTECTION

Note:
1. Traffic or Pedestrian/Bicycle Railing Not Shown for Clarity
2. Where Pourback Is not Protected by Traffic or Pedestrian/Bicycle Railing, Coat Pourback with Methyl Methacrylate

