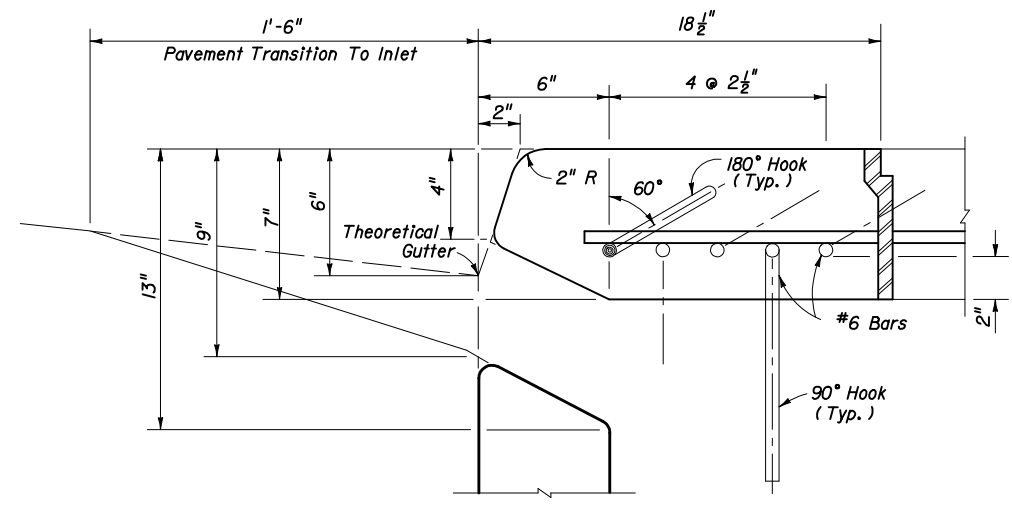
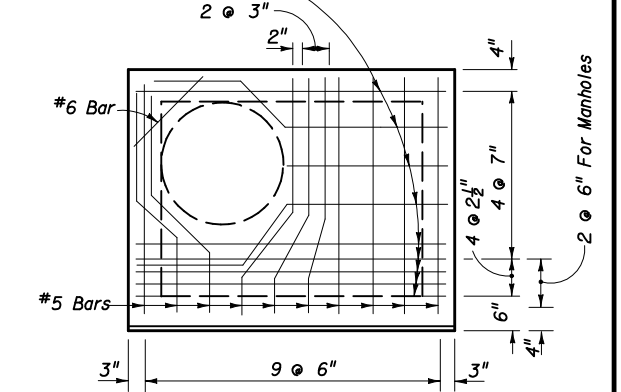


**PLAN**

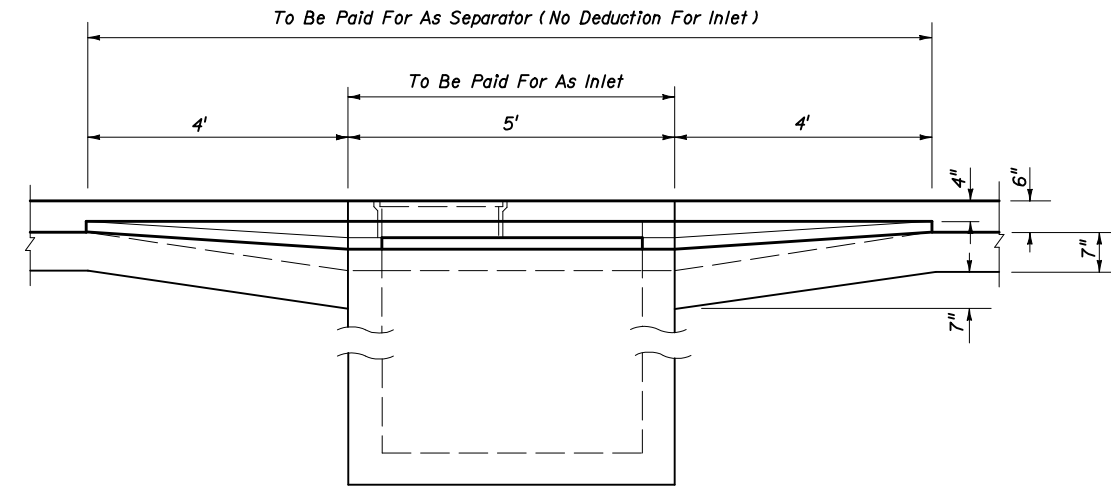


**THROAT DETAIL (SECTION AA)**

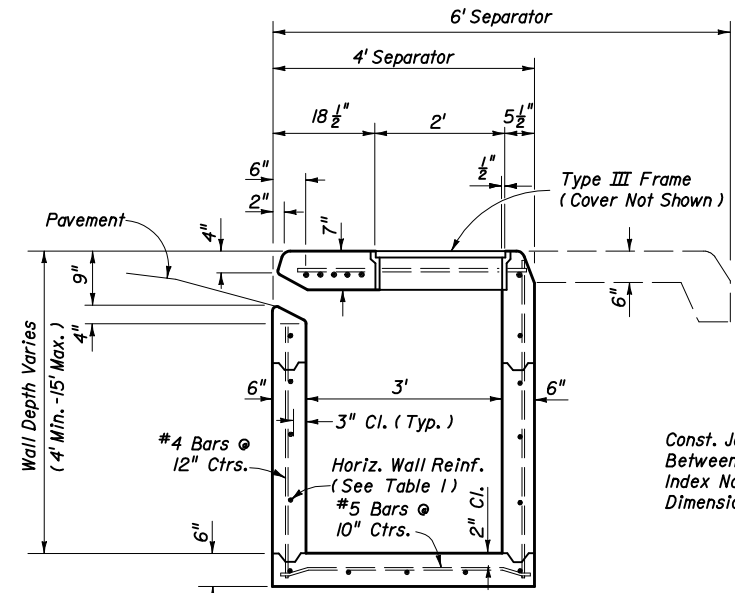
#6 Bars  
 ACI Std. Hooks Required Each End Of  
 Straight Bars And Right End Of Bent  
 Bars. 180° Hooks, Canted 60° (+), On Odd  
 Bars; 90° Hooks, Down, On Even Bars  
 Numbered From Throat Side.



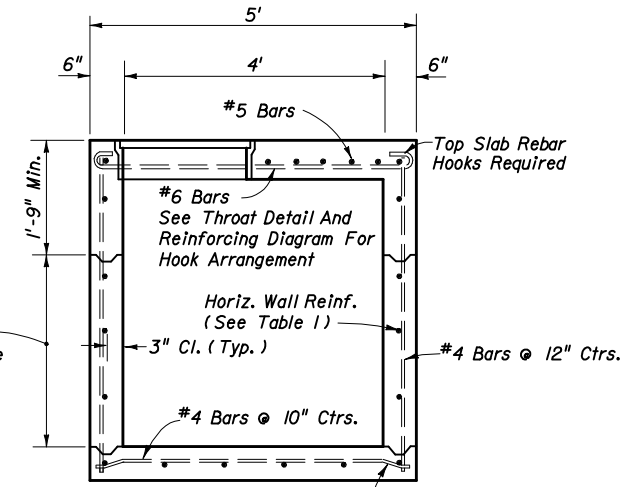
**REINFORCING STEEL DIAGRAM  
 TOP SLAB OF INLET**



**SECTION CC**



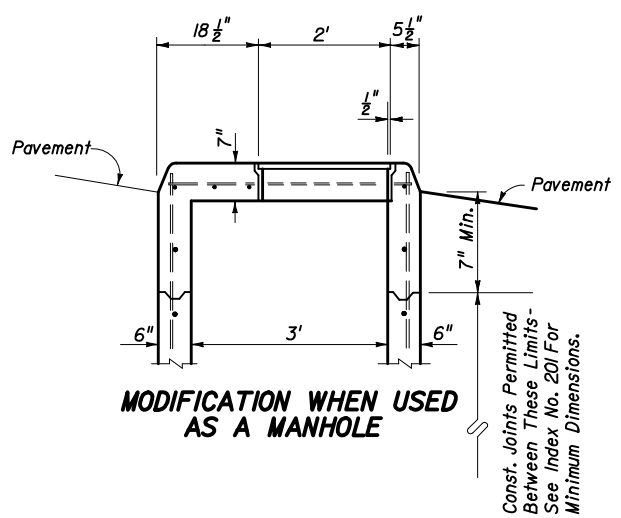
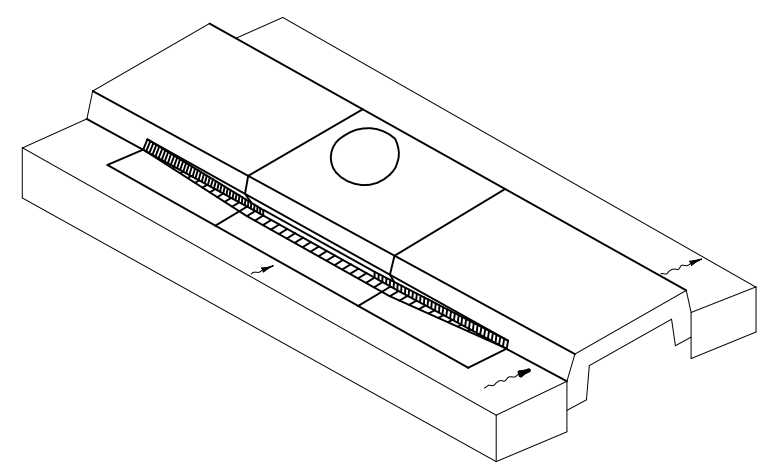
**SECTION AA**



**SECTION BB**

Const. Joints Permitted  
 Between These Limits - See  
 Index No. 201 For Minimum  
 Dimensions.

For Bottom Slab  
 Rebar Embedment  
 Options See Optional  
 Construction Joints,  
 Index No. 201.



**MODIFICATION WHEN USED  
 AS A MANHOLE**

Const. Joints Permitted  
 Between These Limits -  
 See Index No. 201 For  
 Minimum Dimensions.

**GENERAL NOTES**

1. This inlet is to be used only in Traffic Separators Types III and V; or, in separators constructed with Curbs Types D and F and sidewalk paving, which cannot accommodate Inlets Types 1, 2, 3, 4, 5 or 6. Use of this inlet on the through traffic side of the separator should be avoided in medians constructed with Curb Type D (Curb inlets Types 9 or 10 are recommended). Locate inlet outside of designated pedestrian travel way.
2. All reinforcing Grade 60 bars with 2" min. cover unless otherwise shown. See Index No. 201 for equivalent area of welded wire fabric. Cut or bend bars out of way of pipe when necessary. Bars to clear pipe by 1 1/2".
3. Recommended maximum pipe sizes are 24" longitudinal and 30" transverse. For larger pipe, inlets with Alt. B bottoms, Index No. 200 are recommended.
4. For supplemental details see Index No. 201.
5. All dimensions are for both precast and cast-in-place inlets unless otherwise shown.
6. Inlet to be paid for under the contract unit price for Inlets (Curb) (Type 8), Each.

**HORIZONTAL WALL REINFORCING  
 SCHEDULE (TABLE 1)**

WALL DEPTH	SCHEDULE	AREA (in <sup>2</sup> /ft)	MAX. SPACING	
			BAR	WWF
0' - 6'	A12	0.20	12"	8"
6' - 10'	A6	0.20	6"	5"
10' - 13'	A4	0.20	4"	3"
10' - 15'	B5.5	0.24	5 1/2"	5"



2006 FDOT Design Standards

**CURB INLET  
 TYPE 8**

Last Revision  
 07/01/05  
 Sheet No.  
 1 of 1

Index No.  
**213**