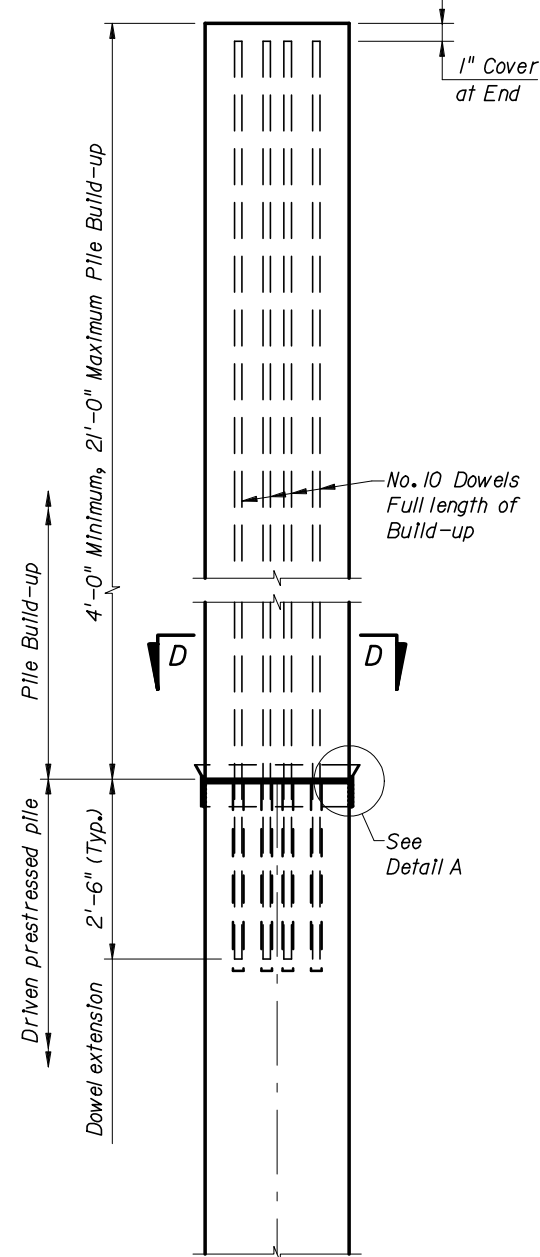
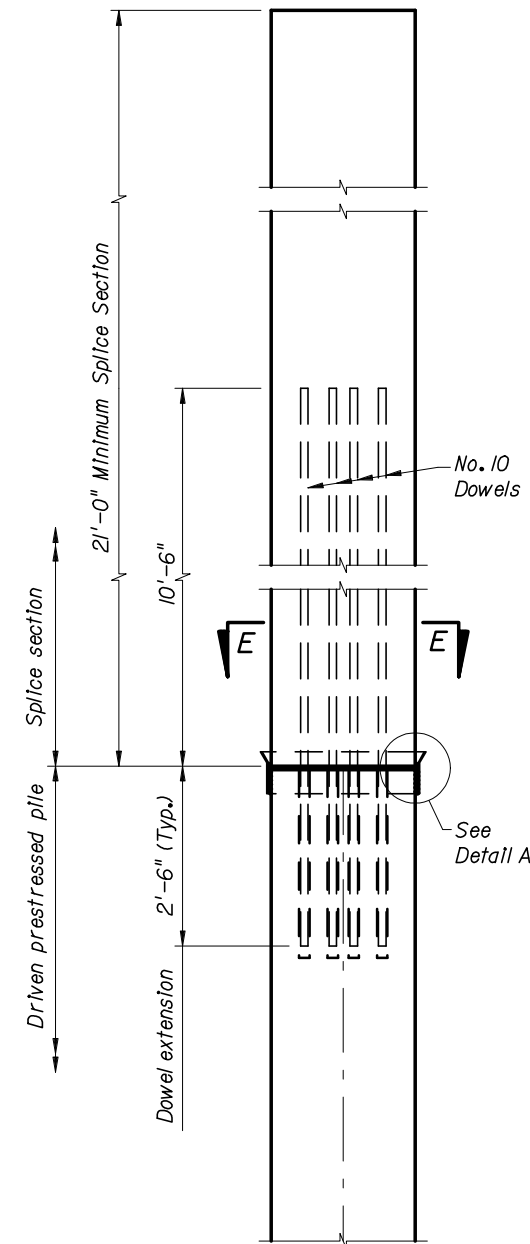


**NOTES:**

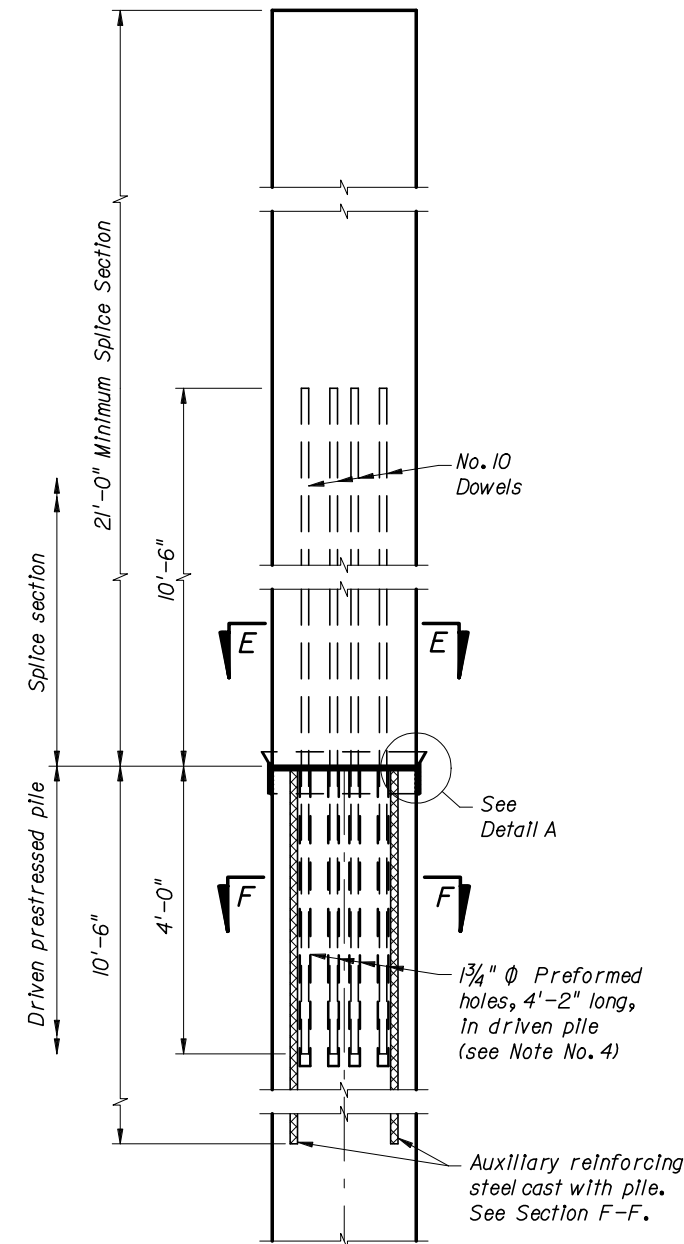
1. For Sections D-D, E-E, & F-F see Index Nos. 20612, 20614, 20618, 20620, 20624 or 20630 for applicable concrete pile size.
2. Prestressing strands, spiral ties and/or reinforcement are not shown for clarity.
3. In cases where pile splices are desired due to length limitations in shipping and/or handling, the "Drivable Pre-Planned Prestressed Precast Splice Detail" shall be used. Mechanical Pile Splices contained on the Qualified Products List (QPL) may also be used.
4. When preformed dowel holes are utilized, the 1" spiral tie pitch shall be continued to 4'-0" below the head of the pile, and the preforming material shall be removed. See Index Nos. 20618, 20620 & 20624.



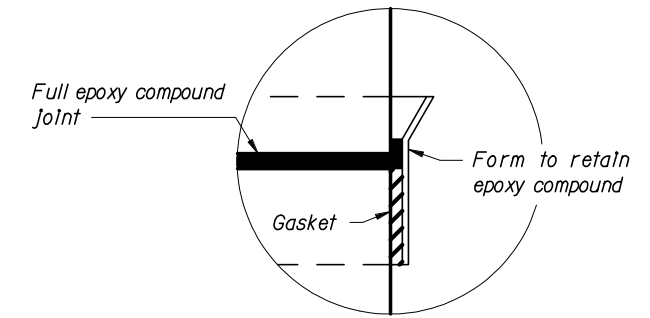
NON-DRIVABLE UNFORESEEN  
REINFORCED PRECAST  
PILE BUILD-UP DETAIL



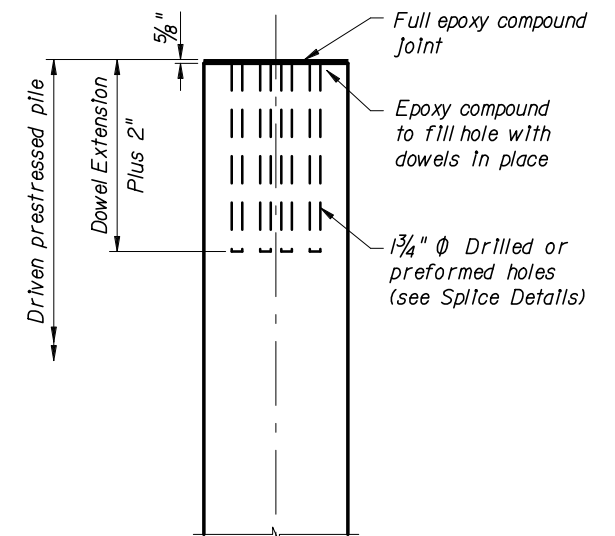
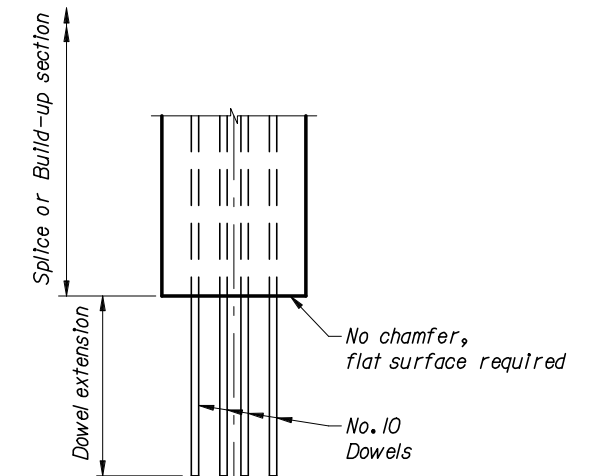
DRIVABLE UNFORESEEN  
PRESTRESSED PRECAST  
PILE SPLICE DETAIL



DRIVABLE PRE-PLANNED  
PRESTRESSED PRECAST  
PILE SPLICE DETAIL



DETAIL A



TYPICAL SPLICE  
BEFORE BONDING



2006 FDOT Design Standards

SQUARE PRESTRESSED CONCRETE PILE SPLICES

Last Revision	Sheet No.
07/01/05	1 of 1
Index No.	
20601	