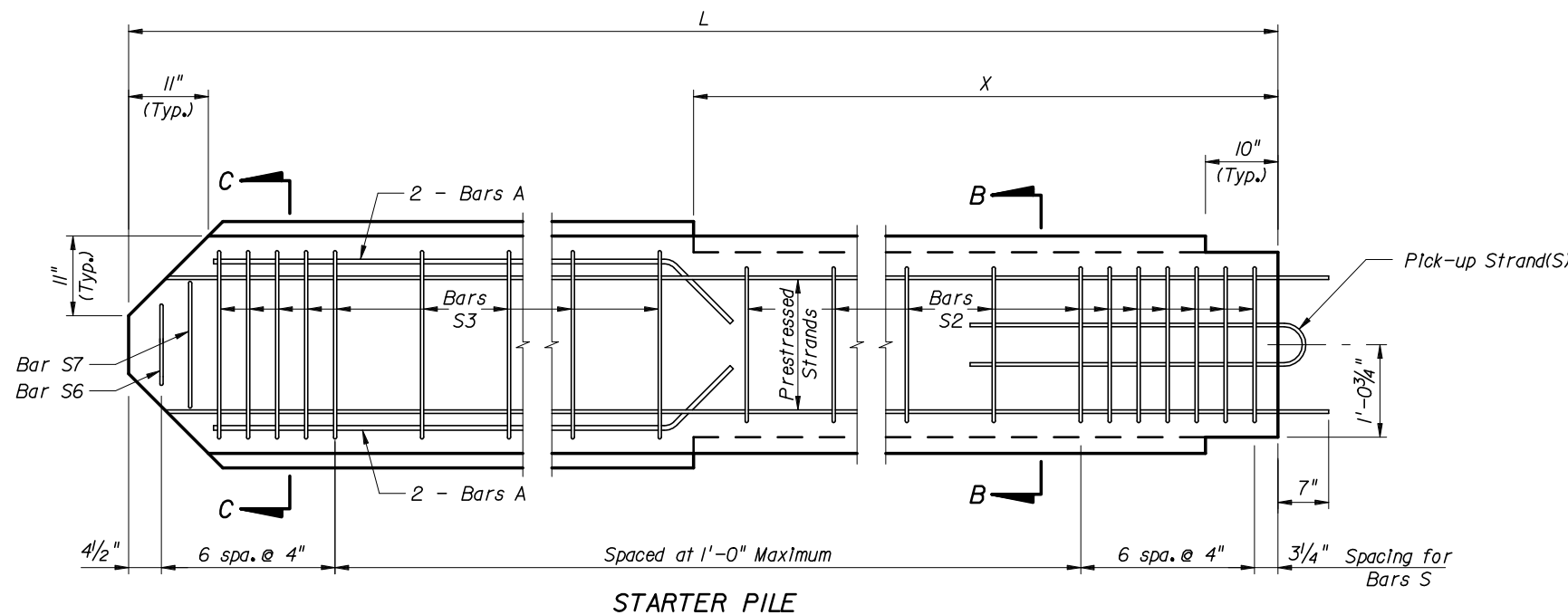


TYPICAL PILE

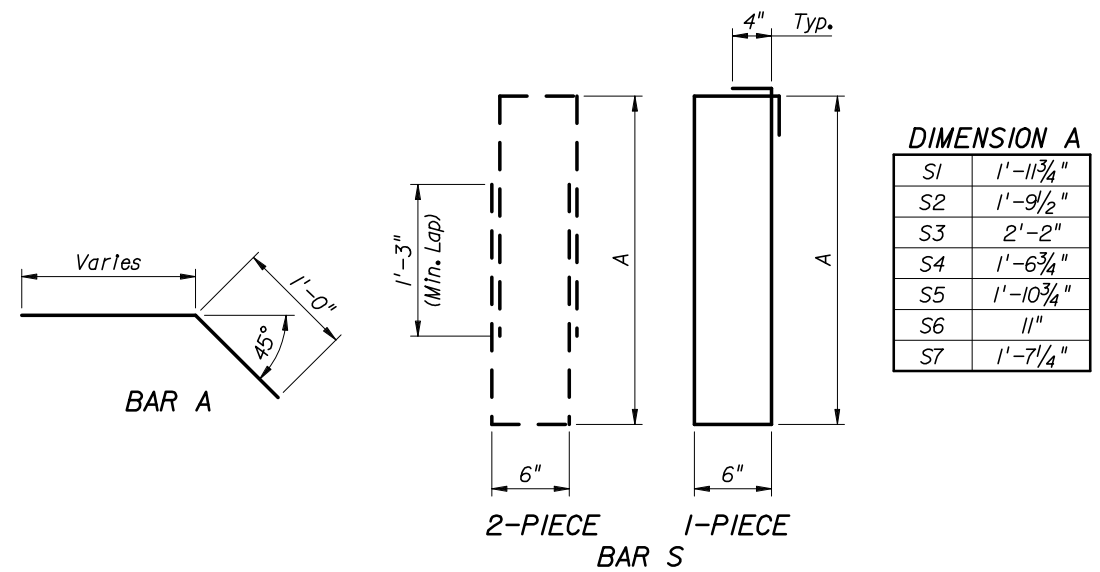


STARTER PILE

STRAND DIA. (in)	MAXIMUM L	n	D (in)	TOTAL # OF STRANDS	SECTION MODULUS (in ³)	* STRESS (PSI)
0.5	31'-0"	7	2 7/8	16	720	1100
0.6	30'-0"	5	4	12	720	1160

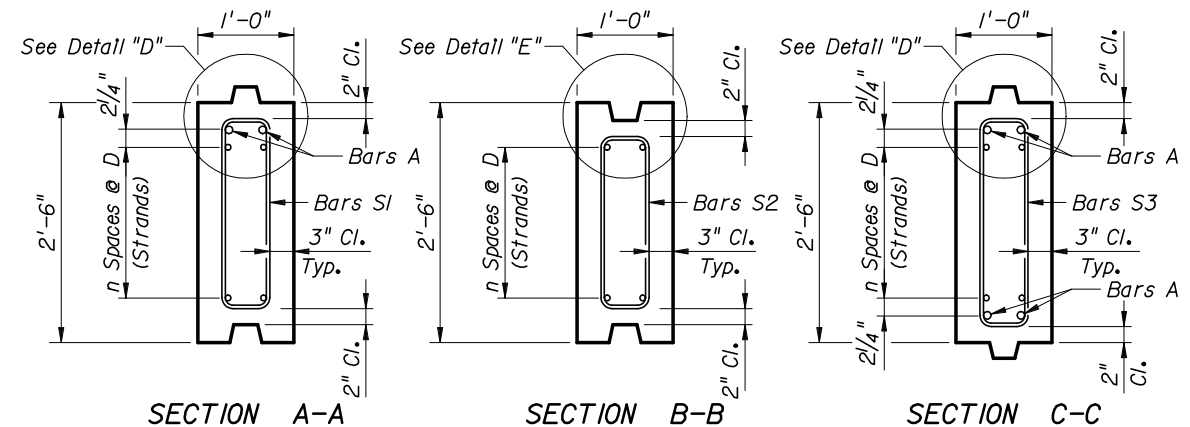
* Unit Prestress after losses.

BAR BENDING DIAGRAMS



NOTES:

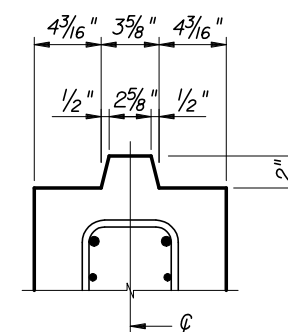
1. Work this Standard with Index No. 20400.
2. Intermediate Prestress Strands not shown in Elevations and Sections.
3. All bar dimensions are out-to-out.
4. Bars A are #5 and Bars S are #4.
5. At the Contractor's option Bars S may be fabricated as a two piece bar as shown in the Bar Bending Diagram.
6. The Contractor may use Welded Deformed Wire Fabric conforming to specification ASTM A497 in lieu of Bars A and Bars S if the wire size and spacing provide the same area of reinforcing steel per foot as the Bars shown.
7. For Dimensions L and X see Sheet Pile Data Table in Structures Plans.



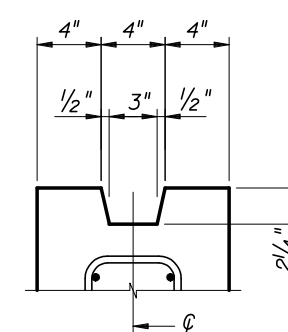
SECTION A-A

SECTION B-B

SECTION C-C



DETAIL "D" (Typical Tongue)



DETAIL "E" (Typical Groove)



2006 FDOT Design Standards

PRECAST CONCRETE SHEET PILE TYPE "A" - 12 INCH THICK

Last Revision 07/01/05
 Sheet No. 1 of 1
 Index No. 20412