

WOOD POLE

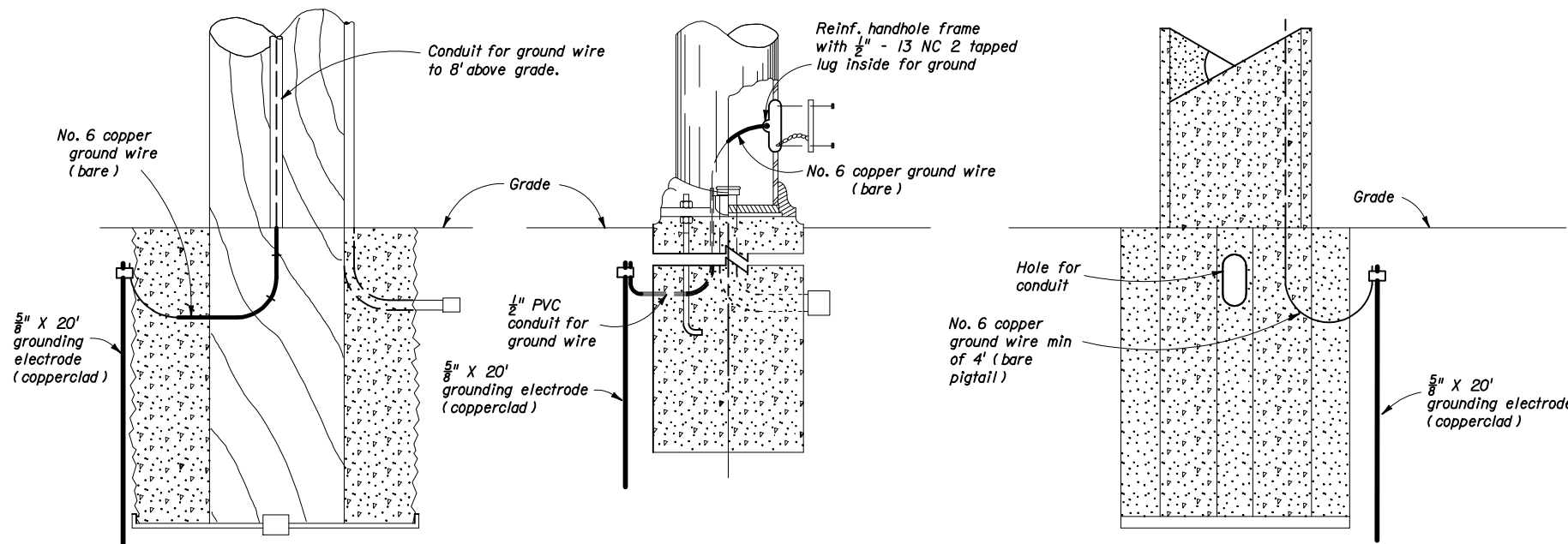
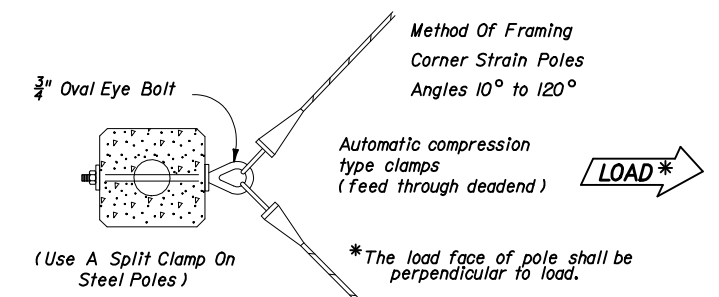
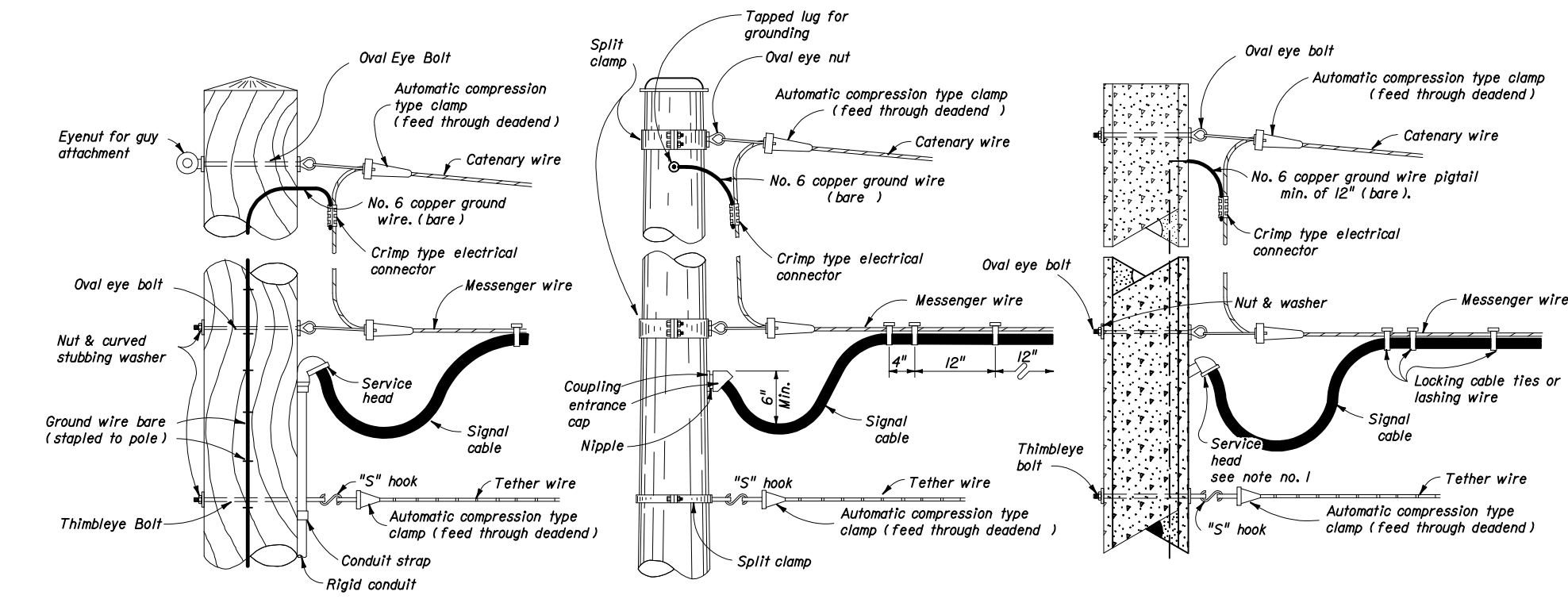
STEEL POLE

PRESTRESSED CONCRETE POLE

Notes:

1. With the approval of the resident engineer, the service head hole for joint use poles may be drilled by the utility company at an angle of 90° but not less than 45° to the face of the pole.
2. Lashing wire should normally be used for distances of 12' or greater.
3. The overlapped connection of adjustable hangers shall use a minimum of 2 bolts with a minimum spacing of 2" between bolts.
4. Meet all grounding requirements of Section 620 of the Standard Specifications.

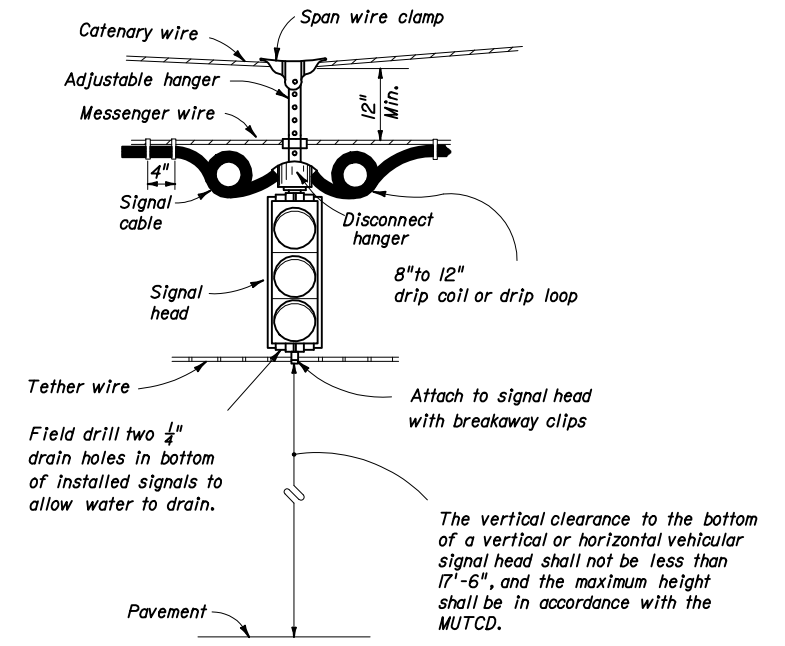
SINGLE POINT ATTACHMENT



WOOD POLE

STEEL POLE

PRESTRESSED CONCRETE POLE



Notes:

1. With the approval of the resident engineer, the service head hole for joint use poles may be drilled by the utility company at an angle of 90° but not less than 45° to the face of the pole.
2. Lashing wire should normally be used for distances of 12' or greater.
3. The overlapped connection of adjustable hangers shall use a minimum of 2 bolts with a minimum spacing of 2" between bolts.
4. Meet all grounding requirements of Section 620 of the Standard Specifications.

TWO POINT ATTACHMENT