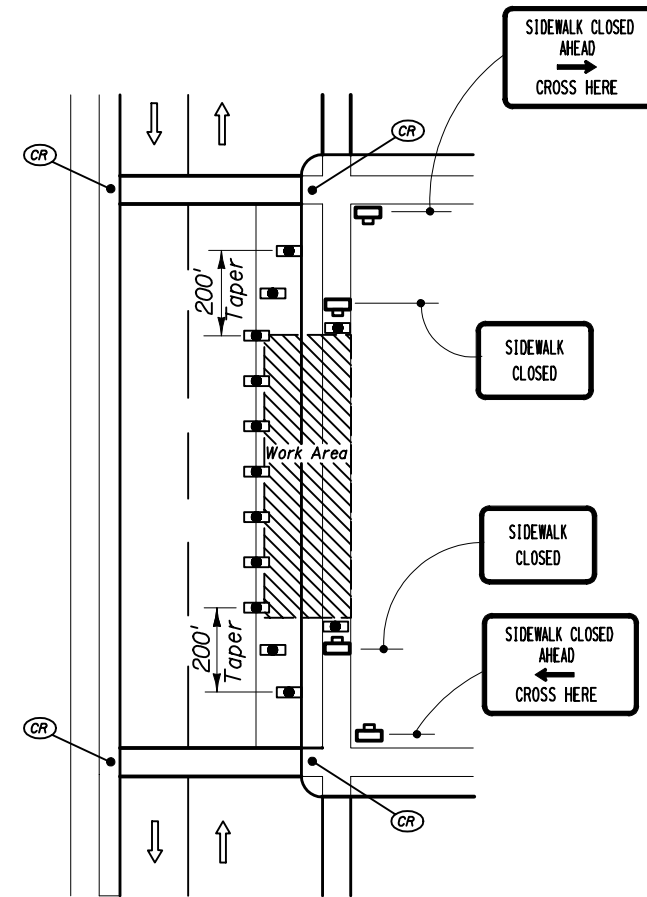
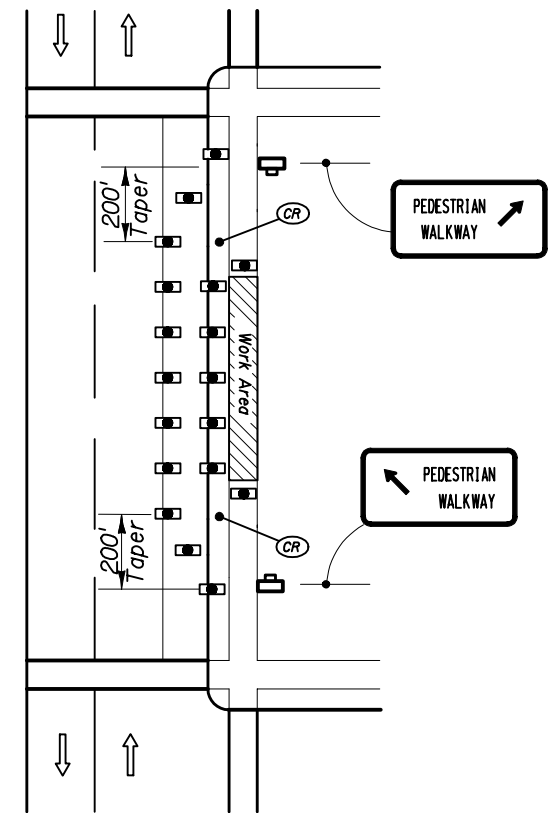


CORNER SIDEWALK CLOSURE WITH TEMPORARY CROSSWALKS



MID-BLOCK SIDEWALK CLOSURE



MID-BLOCK SIDEWALK CLOSURE WITH TEMPORARY WALKWAY

GENERAL NOTES

- Arrows denote direction of traffic only and do not reflect pavement markings.
- Only the signs controlling pedestrian flows are shown. Other work zone signs will be needed to control traffic on the streets.
- For spacing of traffic control devices and general TCZ requirements refer to Index No. 600. Maximum spacing between barricades, vertical panels, drums or tubular markers shall not be greater than 25'.
- Street lighting should be considered.
- For nighttime closures use Type A flashing warning lights on barricades supporting signs and closing sidewalks. Use Type C steady-burn lights on channelizing devices separating the work area from vehicular traffic.
- Pedestrian traffic signal display controlling closed crosswalks shall be covered or deactivated.
- Post Mounted Signs located near or adjacent to a sidewalk shall have a 7' minimum clearance from the bottom of sign to the sidewalk.

- When construction activities involve sidewalks on both sides of the street, efforts should be made to stage the construction so that both sidewalks are not out of service at the same time.
- In the event that sidewalks on both sides of the street are closed, then pedestrians shall be guided around the construction zone.
- Temporary walkways shall be a minimum of 4' wide with a maximum 0.02 cross slope and a maximum 0.05 running slope between ramps. Temporary walkways less than 5' in width shall provide for a 5' x 5' passing space at intervals not to exceed 200'. Temporary ramps shall meet the requirements for curb ramps specified in Index No. 304, General Notes 1 through 7. Temporary walkway surfaces and ramps shall be stable, firm, slip resistant, and kept free of any obstructions and hazards such as holes, debris, mud, construction equipment, stored materials, etc.
- Temporary ramps and temporary crosswalk markings shall be removed with reopening of the sidewalk, unless otherwise noted in the plans. All work and materials associated with constructing temporary curb ramps and temporary crosswalk markings, removal and disposal of temporary curb ramps and temporary crosswalk markings, and restoration to original condition shall be paid for as Maintenance of Traffic, Lump Sum.

TYPICAL APPLICATIONS

- Sidewalk Repair
- Pavement Widening
- Utility Work

CONDITIONS

WHERE ANY VEHICLE, EQUIPMENT WORKERS OR THEIR ACTIVITIES ENCROACH ON THE SIDEWALK FOR A PERIOD OF MORE THAN 60 MINUTES.

SYMBOLS

- Work Area
- Type I Or Type II Barricade Or Vertical Panel Or Drum (With Steady Burning Light At Night Only). (Tubular Markers May Be Used During Daylight Only. Cones May Be Used - See Index No. 600.)
- Work Zone Sign
- Required locations for either temporary or permanent curb ramps.

STATE OF FLORIDA DEPARTMENT OF TRANSPORTATION				
TRAFFIC CONTROL THROUGH WORK ZONES				
PEDESTRIAN CONTROL FOR CLOSURE OF SIDEWALKS				
Designed By		Dates	Approved By	
Drawn By		7/93	Roadway Design Engineer	
Checked By		7/93	Revision	Sheet No. Index No.
			04	1 of 1 660