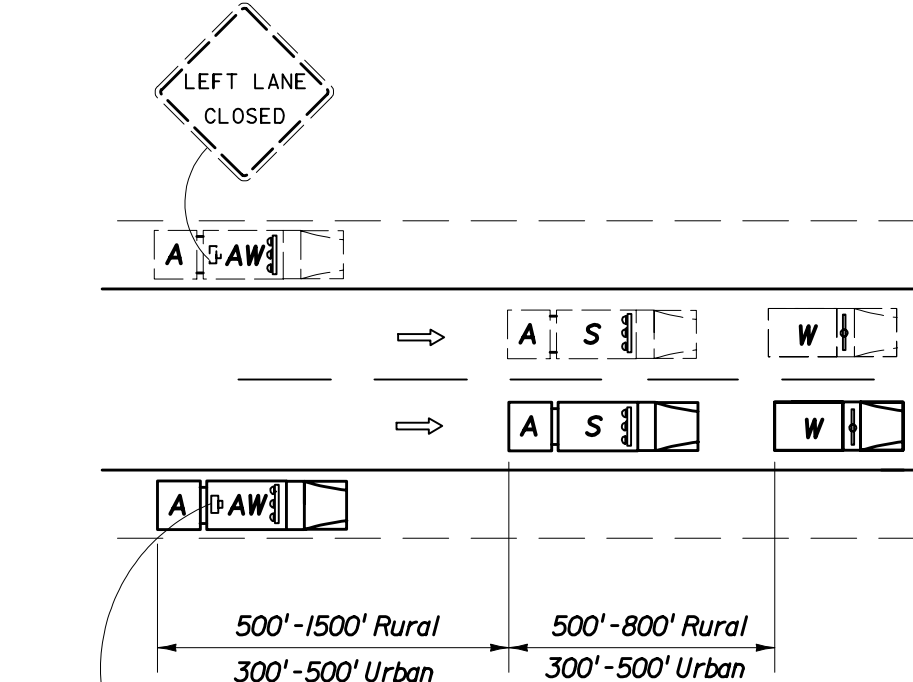
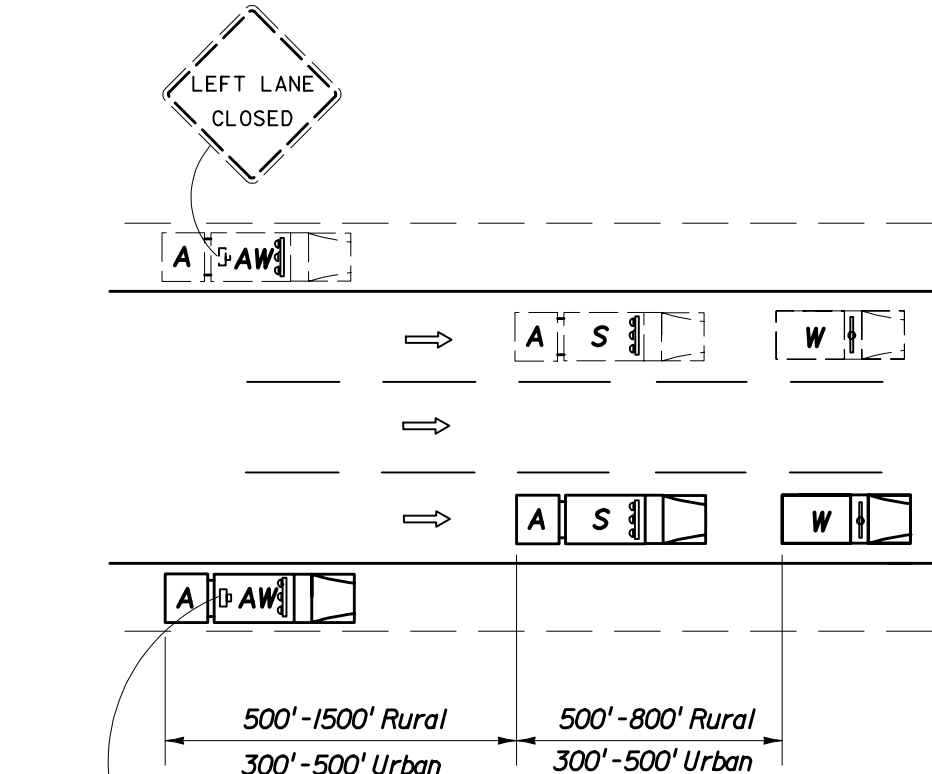


**ADVANCE WARNING ARROW
 PANEL MODE • CAUTION**



**ADVANCE WARNING ARROW
 PANEL MODE • MOVE/MERGE LEFT [RIGHT]**



**ADVANCE WARNING ARROW
 PANEL MODE • MOVE/MERGE LEFT [RIGHT]**

1. Shadow and Advance Warning Vehicle shall display rotating/strobe lights.
2. The Advance Warning Vehicle (Optional) may be used at the direction of the Engineer. If an Advance Warning Vehicle is operated within the travel way, an approved Truck Mounted Attenuator will be required on the Advance Warning Vehicle but not required on the Shadow Vehicle. The Advance Warning Arrow Panel and Warning Sign are required on both the Advance Warning and Shadow Vehicles.

Where adequate shoulder width is not available, the advance warning vehicle may drive in the lane.

Where adequate shoulder width is not available, the advance warning vehicle may drive in the lane.

GENERAL NOTES

1. These illustrations are representative of general conditions.
2. The intensity of light and position of panels shall be as specified in Index 600.
3. Vehicle-mounted signs shall be mounted with the bottom of the sign at a minimum height of 48 inches above the pavement. Sign legends shall be covered or turned from view when work is not in progress.
4. If the work vehicle speed exceeds the minimum legal speed limit on limited access facilities and one half the posted speed limit on other facilities the engineer in charge may delete requirements for shadow vehicle and attenuators. The work vehicle will be required to have an advance warning arrow panel and sign message.

SYMBOLS

- Work Vehicle With Rotating/Strobe Lights
- Shadow (S) Or Advance Warning (AW) Vehicle with Advance Warning Arrow Panel and Sign Message
- Truck Mounted Attenuator (TMA)
- Lane Identification And Direction Of Traffic

TYPICAL APPLICATIONS

- Striping
- RPM Placement
- Vegetation Control

**CONDITIONS
 MOVING OPERATION**

| | | | | |
|---|-------|-------|--|---------------------|
| STATE OF FLORIDA DEPARTMENT OF TRANSPORTATION | | | | |
| TRAFFIC CONTROL THROUGH WORK ZONES | | | | |
| MOVING OPERATIONS | | | | |
| Designed By | Names | Dates | Approved By | |
| Drawn By | | 12/87 | <i>Samuel D. Mill</i> Roadway Design Engineer | |
| Checked By | | 12/87 | Revision | Sheet No. Index No. |
| | | | 04 | 1 of 1 627 |