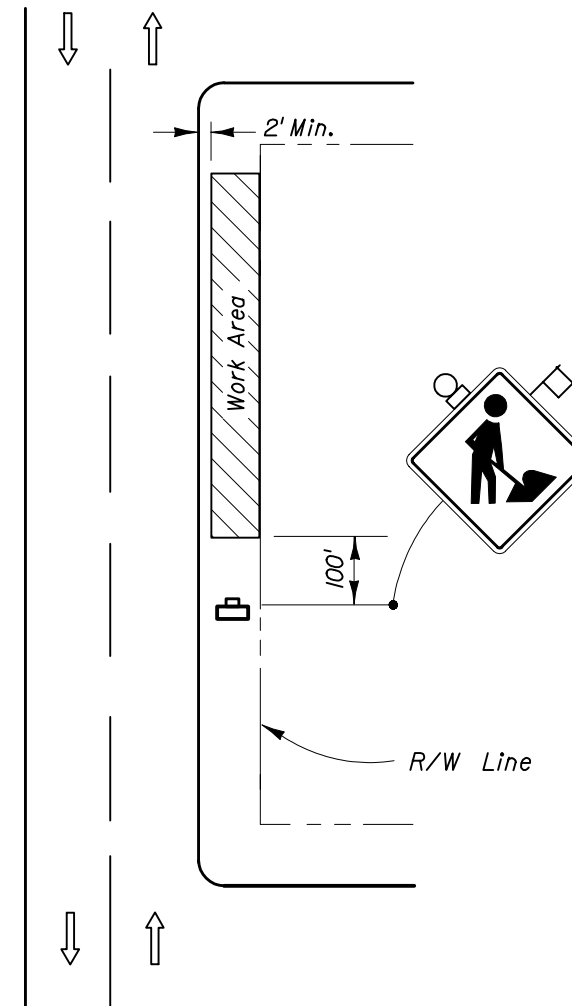


CORNER WORK






MID-BLOCK WORK

TYPICAL APPLICATIONS
Utility Work

CONDITIONS


WHERE CURB AND GUTTER EXISTS AND WHERE ANY VEHICLE, EQUIPMENT, WORKERS OR THEIR ACTIVITIES ENCROACH THE AREA CLOSER THAN 15' (OR THE RIGHT OF WAY LINE, WHICHEVER IS CLOSER) BUT NOT CLOSER THAN 2' TO THE EDGE OF TRAVEL WAY FOR A PERIOD OF MORE THAN 60 MINUTES.

SYMBOLS

-  Work Area
-  Work Zone Sign
-  Sign With 18" x 18" (Min.) Orange Flag And Type B Light

GENERAL NOTES

1. When construction activities encroach on a sidewalk refer to Index No. 660.

STATE OF FLORIDA DEPARTMENT OF TRANSPORTATION				
TRAFFIC CONTROL THROUGH WORK ZONES				
WORK OUTSIDE THE TRAVEL WAY URBAN AREAS				
Designed By	Names	Dates	Approved By 	
Drawn By			Roadway Design Engineer	
Checked By			Revision	Sheet No. Index No.
			04	1 of 1 619