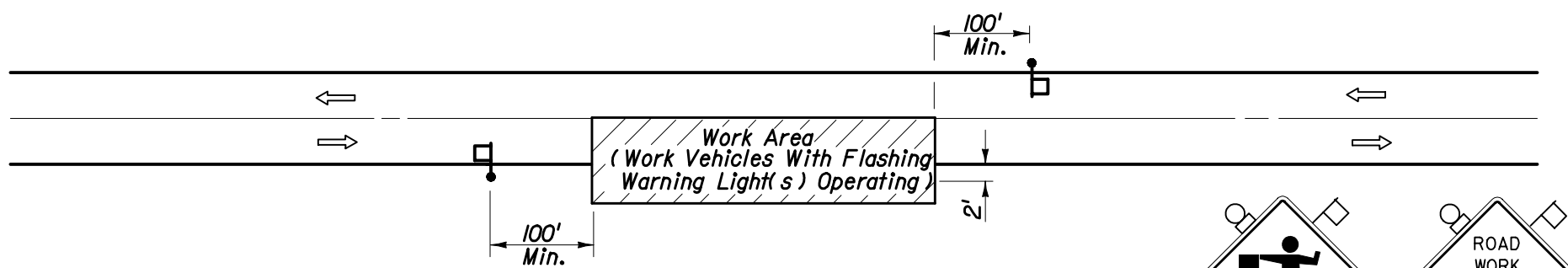
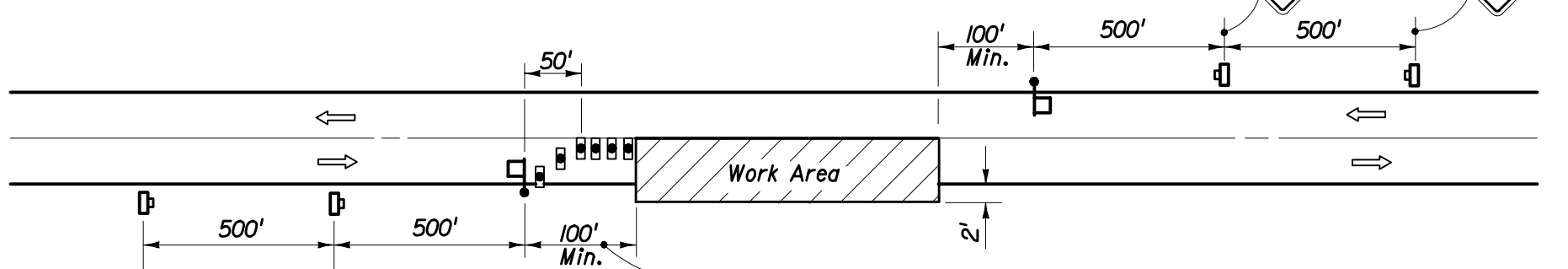


CONDITIONS
 FOR ANY OPERATION THAT IS 2' OR MORE OUTSIDE THE EDGE OF THE TRAVEL WAY FOR A PERIOD OF LESS THAN 60 MINUTES.



CONDITIONS
 FOR ANY OPERATION THAT ENCROACHES IN THE AREA BETWEEN THE CENTERLINE AND A LINE 2' OUTSIDE THE EDGE OF THE TRAVEL WAY FOR A PERIOD OF 15 MINUTES OR LESS.



CONDITIONS
 FOR ANY OPERATION THAT ENCROACHES IN THE AREA BETWEEN THE CENTERLINE AND A LINE 2' OUTSIDE THE EDGE OF THE TRAVEL WAY FOR A PERIOD IN EXCESS OF 15 MINUTES BUT LESS THAN 60 MINUTES.



GENERAL NOTES

- The maximum length of work area to be determined by the Engineer, but in no case to exceed the length of one-half (1/2) days operation or 2 miles whichever is less.
- All vehicles, equipment, workers (except flaggers) and their activities are restricted at all times to one side of the roadway.
- Additional one-way control may be effected by the following means:
 (1) Flag-carrying vehicle; (2) Official vehicle; (3) Pilot vehicles; (4) Traffic signals.
 When flaggers are the sole means of one-way control the flaggers shall be in sight of each other or in direct communication at all times.
- The first two warning signs shall have an 18" x 18" (min.) orange flag and a Type B light attached and operating at all times.
 Mesh signs may be used for (Daylight Only) operations. Type B Lights and Orange Flags are not required.
- The FLAGGER legend sign may be substituted for the symbol sign.
- Arrows denote direction of traffic only and do not reflect pavement markings.
- Longitudinal dimensions are to be adjusted to fit field conditions. See Index No. 600.
- When a side road intersects the highway on which work is being performed additional traffic control devices shall be erected in accordance with other applicable TCZ Indexes.
- For general TCZ requirements and additional information refer to Index No. 600.

SYMBOLS

- Work Area
- Sign With 18" x 18" (Min.) Orange Flag And Type B Light
- Type I Or Type II Barricade Or Vertical Panel Or Drum (With Steady Burning Light At Night Only).
 (Tubular Markers May Be Used During Daylight Only. Cones May Be Used - See Index No. 600.)
- Work Zone Sign
- Flagger

TYPICAL APPLICATIONS

- Marking Patches
- Field Patches
- String Line
- Utility Work
- Cleaning Up Debris On Pavement
- Pavement Coring And Straight Edging

STATE OF FLORIDA DEPARTMENT OF TRANSPORTATION				
TRAFFIC CONTROL THROUGH WORK ZONES				
TWO-LANE TWO-WAY • RURAL				
SHORTTIME				
DAY OR NIGHT OPERATIONS				
Designed By	Names	Dates	Approved By	
Drawn By		12/87	Roadway Design Engineer	
Checked By		12/87	Revision	Sheet No. Index No.
			04	1 of 1 607