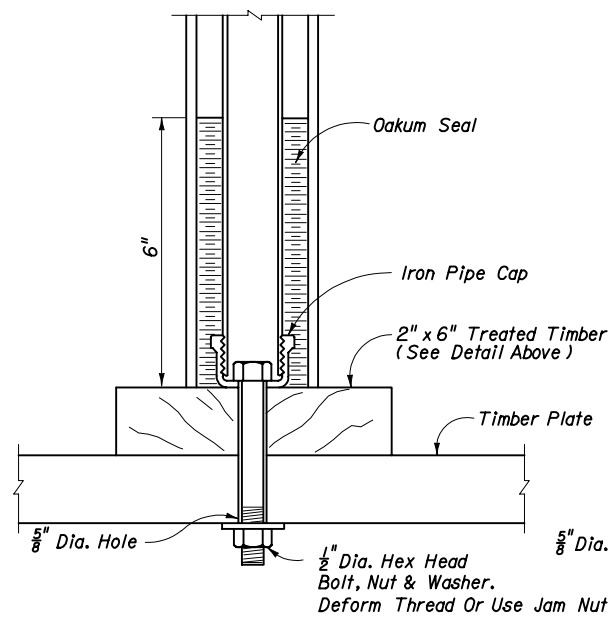


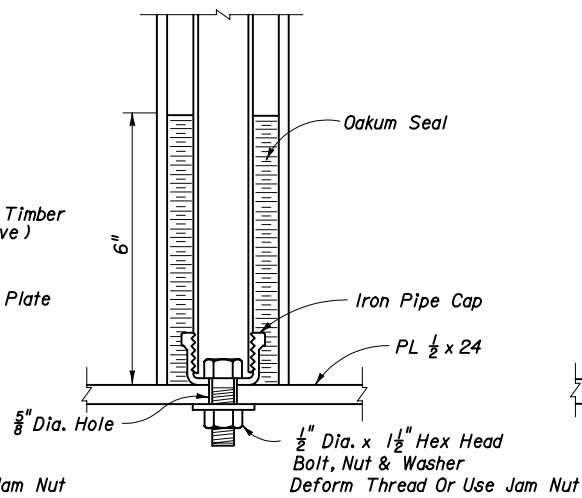
INSTALLATION

NOTES

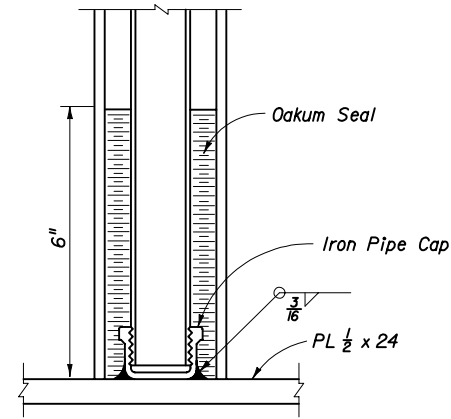
1. Elevation of the top of each length of marker pipe shall be determined as soon as it is installed and also immediately before the next length of marker pipe is added.
2. Settlement plate locations shall be flagged and protected from construction vehicles and equipment. If settlement plates are disturbed, they shall be replaced in kind.
3. Oakum used to construct seal should not have a mesh covering (plastic or other synthetic material).
4. The settlement plates shall be paid for under the contract unit price for Settlement Plate Assembly, AS.



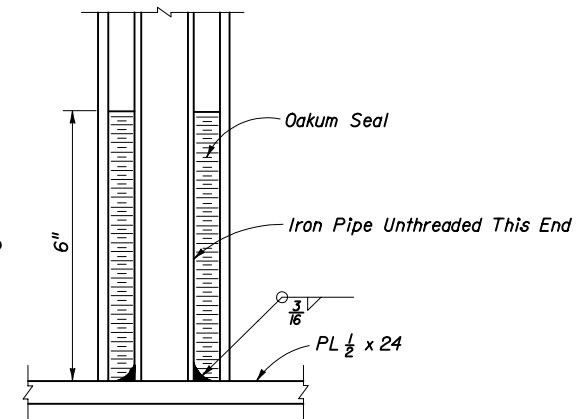
TIMBER PLATE



**STEEL PLATE
STEM AND PLATE OPTIONS**



STEEL PLATE



STEEL PLATE

STATE OF FLORIDA DEPARTMENT OF TRANSPORTATION				
SETTLEMENT PLATE				
Names	Dates	Approved By <i>Jamal D. Milk</i>		
Designed By JVG	10/79	Roadway Design Engineer		
Drawn By HSD	10/79	Revision	Sheet No.	Index No.
Checked By JBW	10/79	00	1 of 1	540