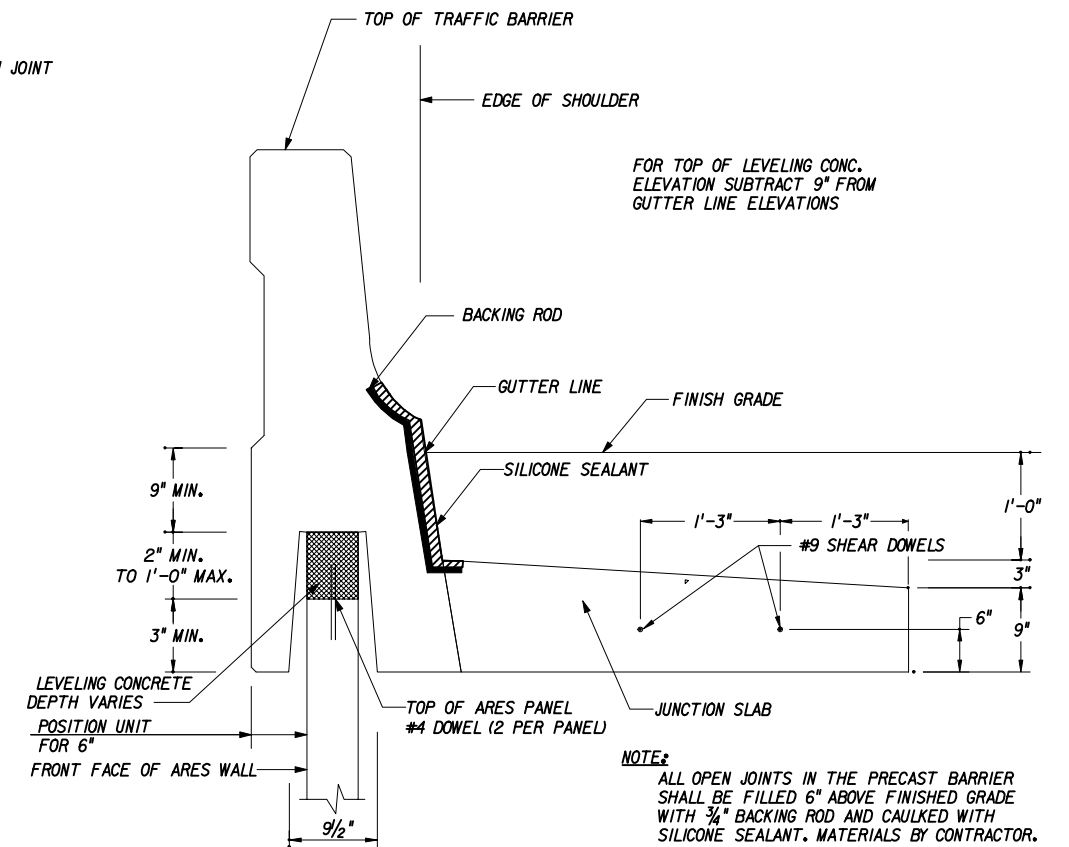


**PLAN VIEW**

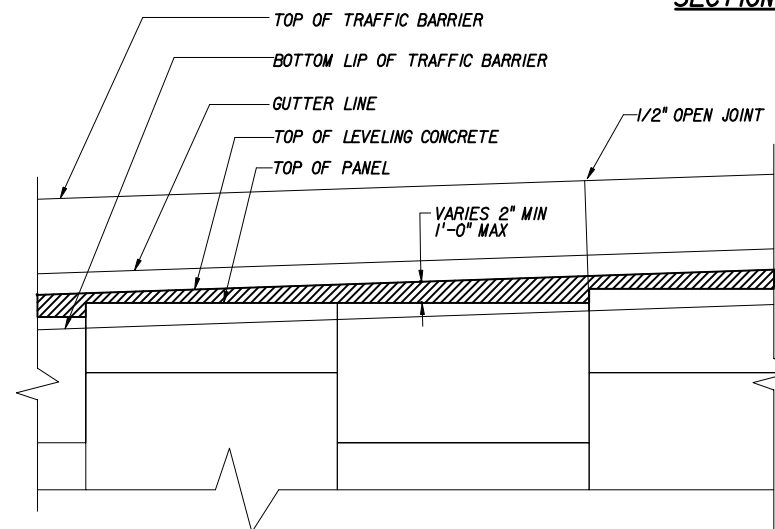
**PRECAST TRAFFIC BARRIER WITH C.I.P. JUNCTION SLAB**

NOT TO SCALE



**SECTION A-A AT PRECAST TRAFFIC BARRIER WITH C.I.P. JUNCTION SLAB**

NOT TO SCALE



**PRECAST TRAFFIC BARRIER PARTIAL ELEVATION VIEW**

NOT TO SCALE

FOR TOP OF LEVELING CONC.  
ELEVATION SUBTRACT 9" FROM  
GUTTER LINE ELEVATIONS

**NOTE:**  
ALL OPEN JOINTS IN THE PRECAST BARRIER  
SHALL BE FILLED 6" ABOVE FINISHED GRADE  
WITH 3/4" BACKING ROD AND CAULKED WITH  
SILICONE SEALANT. MATERIALS BY CONTRACTOR.

THIS SYSTEM WALL MAY BE USED IN ALL ENVIRONMENTS.

THIS DESIGN IS BASED UPON SPECIFIC PROPERTIES OF TENSAR PRODUCTS (GEOGRIDS, DRAINAGE COMPOSITES AND EROSION MEDIA), WHICH ARE PROPRIETARY TO THE TENSAR CORPORATION 1210 CITIZENS PARKWAY, MORROW GA 30260. ANY SUBSTITUTION OF THE SPECIFIED PRODUCTS WILL INVALIDATE THIS DESIGN.

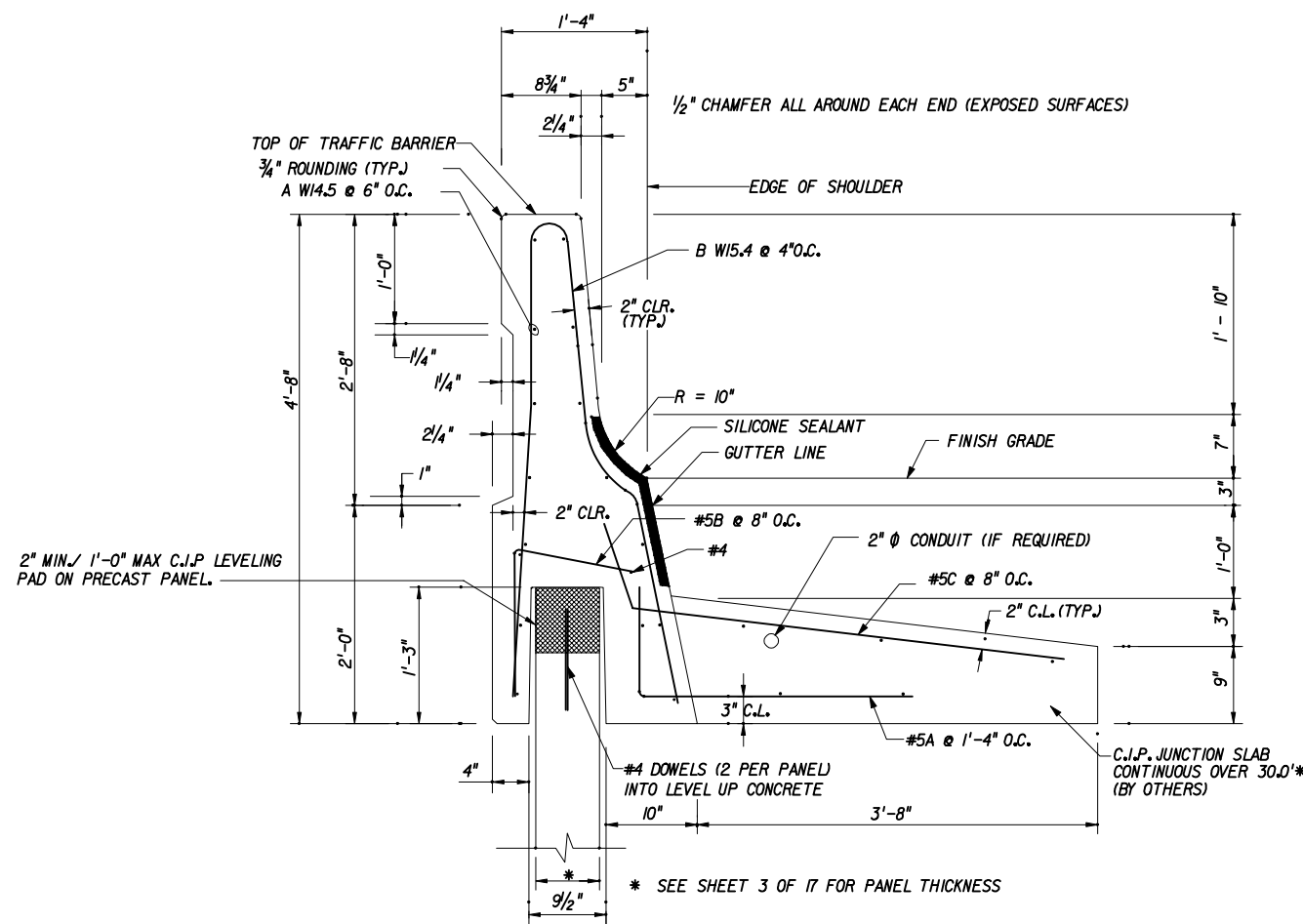
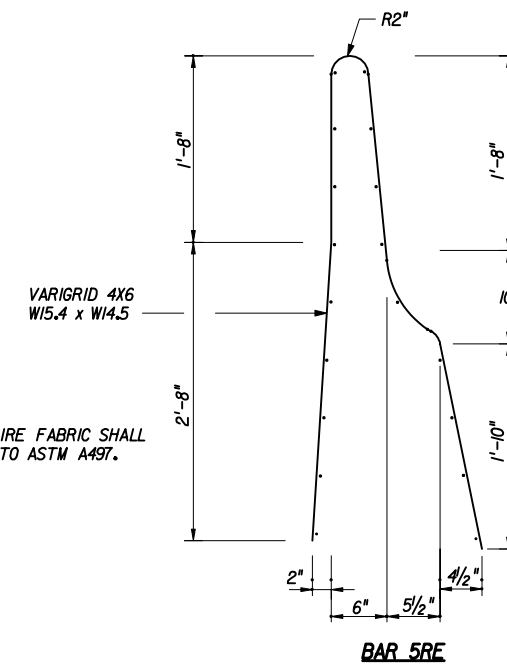
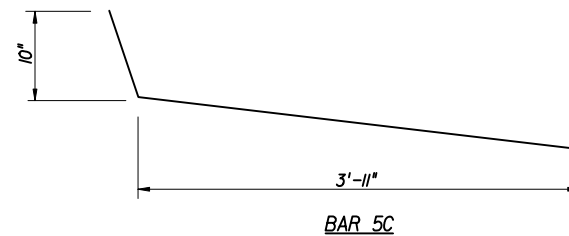
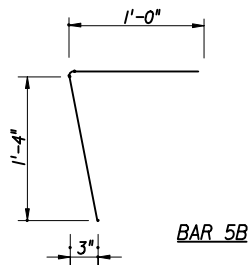
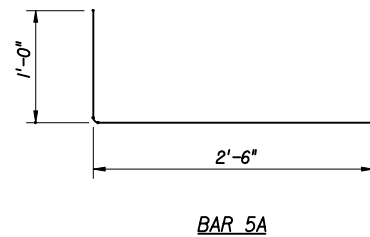
THIS DRAWING, DESIGN NOTES AND ASSOCIATED CALCULATIONS HAVE BEEN PREPARED BY TENSAR EARTH TECHNOLOGIES, INC. FOR PRELIMINARY DESIGN PURPOSES AND SHALL NOT BE USED FOR FINAL DESIGN OR CONSTRUCTION.

© 2003, TENSAR EARTH TECHNOLOGIES, INC.

**TENSAR  
EARTH TECHNOLOGIES, INC.**  
5883 Glenridge Drive  
Suite 200  
Atlanta, GA 30328  
(404) 250-1290



STATE OF FLORIDA DEPARTMENT OF TRANSPORTATION				
RETAINING WALL SYSTEM TENSAR EARTH TECHNOLOGIES MSE RETAINING WALL				
Names	Dates	Approved By		
Designed By	BS	3/03	State Structures Design Engineer	
Drawn By	WL	3/03		
Checked By	JSB	3/03	04	10 of 17
			Index No.	5025



VARIGRID 4X6  
W15.4 x W14.5

WELDED WIRE FABRIC SHALL  
CONFORM TO ASTM A497.

**NOTES:**

- A. 1/2" CHAMFER ALL AROUND EACH FACE (EXPOSED SURFACES)
- B. ALL LONGITUDINAL BARS SHALL BE #4 WITH A MAXIMUM SPACING OF 1'-6" O.C.

MARK	QUANTITY	REMARKS
5A	8	3'-6" LONG
5B	16	2'-4" LONG
5C	16	5'-0" LONG
A	VARIGRID	W14.5 @ 6" O.C.
B	VARIGRID	W15.4 @ 4" O.C.

THIS SYSTEM MAY BE USED IN ALL ENVIRONMENTS.

THIS DESIGN IS BASED UPON SPECIFIC PROPERTIES OF TENSAR PRODUCTS (GEOGRIDS, DRAINAGE COMPOSITES AND EROSION MEDIA), WHICH ARE PROPRIETARY TO THE TENSAR CORPORATION 1210 CITIZENS PARKWAY, MORROW GA 30260. ANY SUBSTITUTION OF THE SPECIFIED PRODUCTS WILL INVALIDATE THIS DESIGN. ANY PARTY ACCEPTING THIS DOCUMENT DOES SO IN CONFIDENCE AND AGREES THAT IT SHALL NOT BE DUPLICATED WHOLE OR IN PART, NOR DISCLOSED TO OTHERS, WITHOUT THE CONSENT OF TENSAR EARTH TECHNOLOGIES, INC.

THIS DRAWING, DESIGN NOTES AND ASSOCIATED CALCULATIONS HAVE BEEN PREPARED BY TENSAR EARTH TECHNOLOGIES, INC. FOR PRELIMINARY DESIGN PURPOSES AND SHALL NOT BE USED FOR FINAL DESIGN OR CONSTRUCTION.

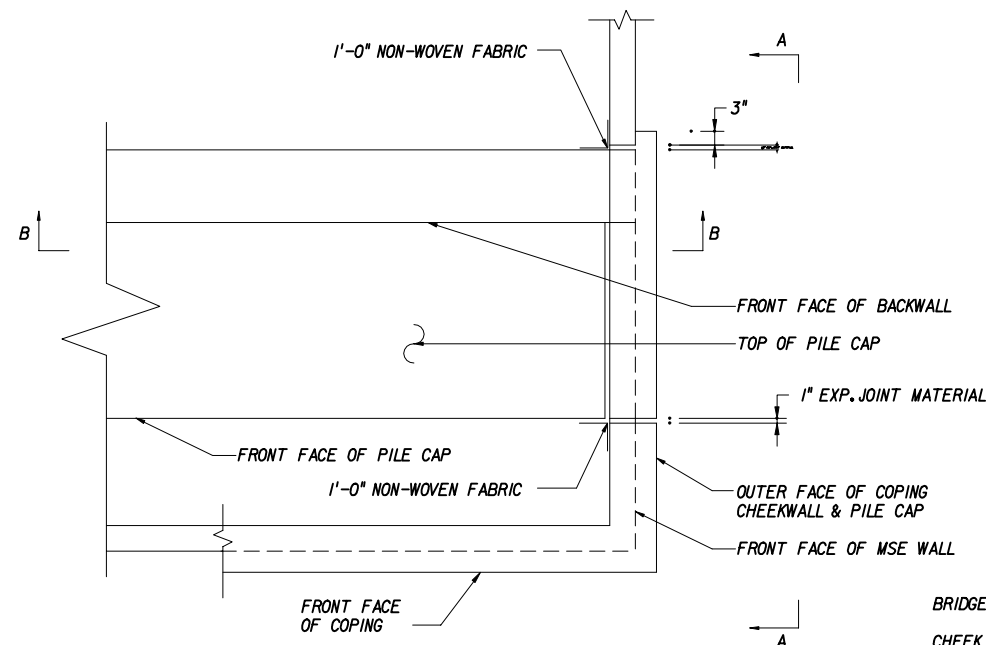
© 2003, TENSAR EARTH TECHNOLOGIES, INC.

**PRECAST BARRIER - VARIGRID REINFORCEMENT**  
NOT TO SCALE

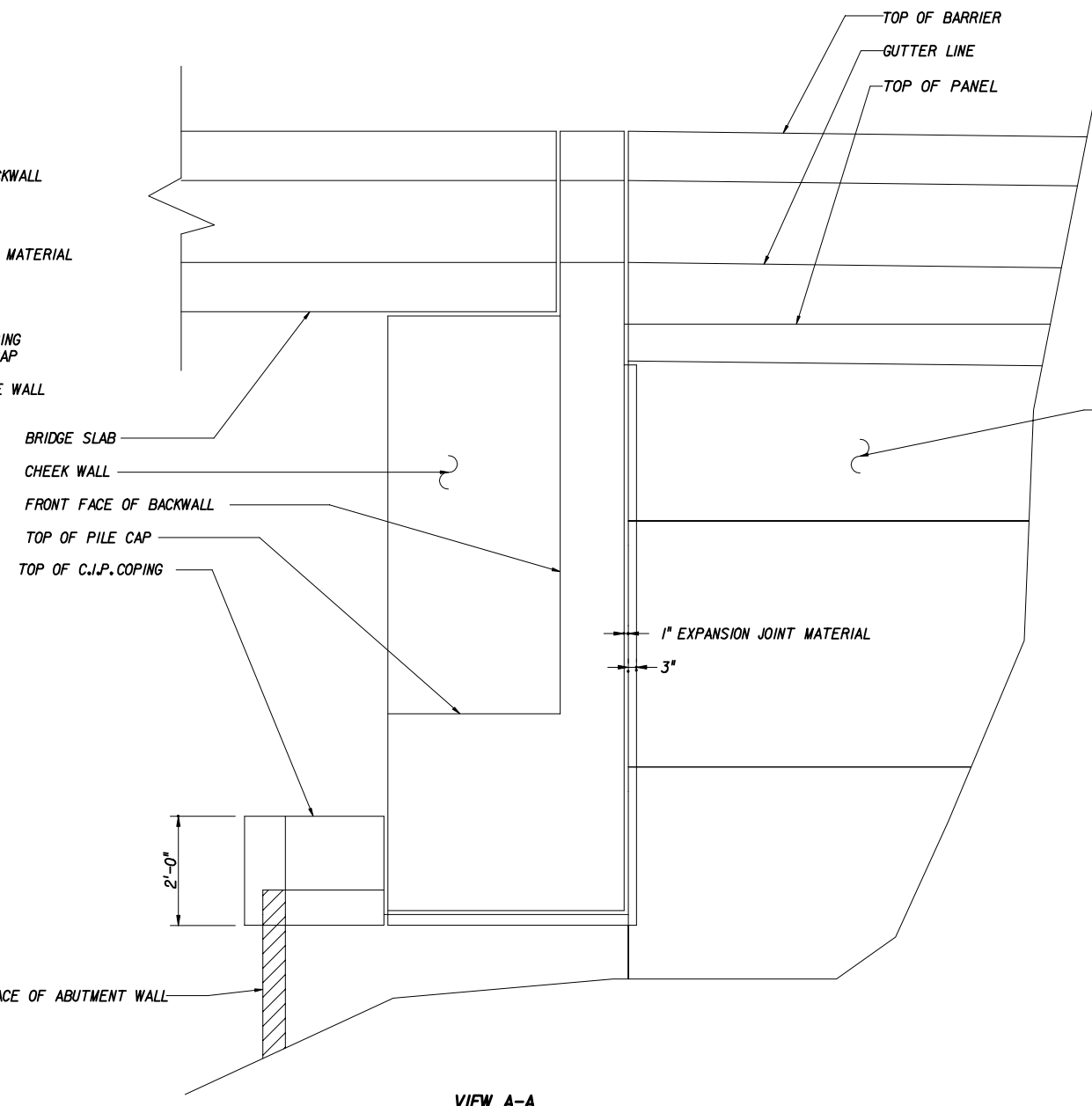
**TENSAR  
EARTH TECHNOLOGIES, INC.**  
5883 Glenridge Drive  
Suite 200  
Atlanta, GA 30328  
(404) 250-1290



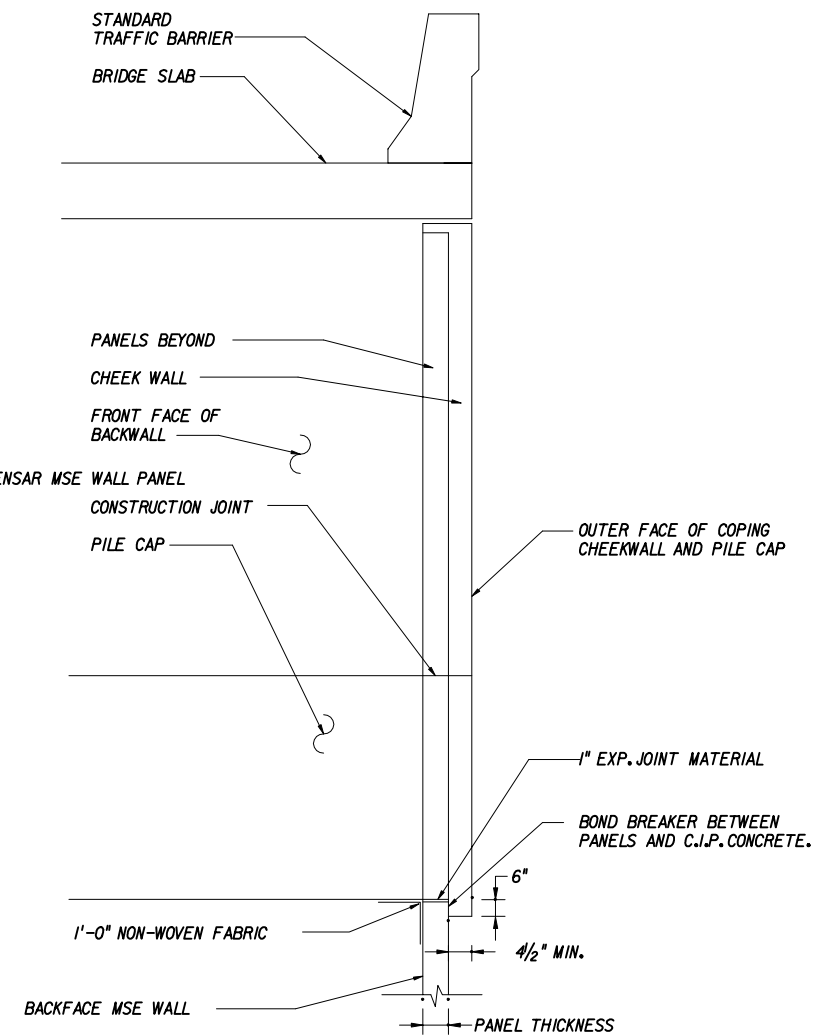
STATE OF FLORIDA DEPARTMENT OF TRANSPORTATION				
<b>RETAINING WALL SYSTEM TENSAR EARTH TECHNOLOGIES MSE RETAINING WALL</b>				
Names	Dates	Approved By <i>W. V. [Signature]</i>		
Designed By	BS	3/03	State Structures Design Engineer	
Drawn By	WL	3/03	Revision	Sheet No. Index No.
Checked By	JSB	3/03	04	11 of 17 5025



**PLAN VIEW @ ENDBENT**  
NOT TO SCALE



**VIEW A-A**



**SECTION B-B**

**SECTIONS @ ENDBENT**  
NOT TO SCALE

THIS SYSTEM MAY BE USED IN ALL ENVIRONMENTS.

THIS DESIGN IS BASED UPON SPECIFIC PROPERTIES OF TENSAR PRODUCTS (GEOGRIDS, DRAINAGE COMPOSITES AND EROSION MEDIA), WHICH ARE PROPRIETARY TO THE TENSAR CORPORATION 1210 CITIZENS PARKWAY, MORROW GA 30260. ANY SUBSTITUTION OF THE SPECIFIED PRODUCTS WILL INVALIDATE THIS DESIGN.

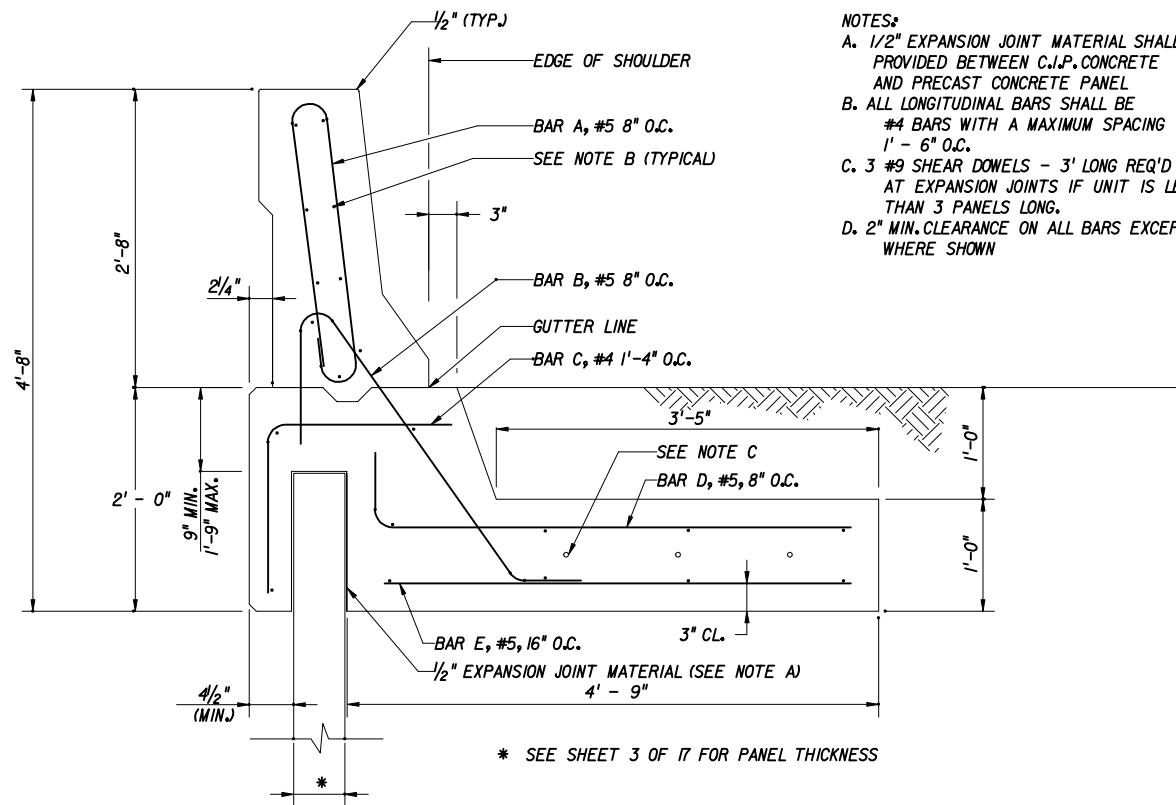
THIS DRAWING, DESIGN NOTES AND ASSOCIATED CALCULATIONS HAVE BEEN PREPARED BY TENSAR EARTH TECHNOLOGIES, INC. FOR PRELIMINARY DESIGN PURPOSES AND SHALL NOT BE USED FOR FINAL DESIGN OR CONSTRUCTION.

**TENSAR  
EARTH TECHNOLOGIES, INC.**  
5883 Glenridge Drive  
Suite 200  
Atlanta, GA 30328  
(404) 250-1290



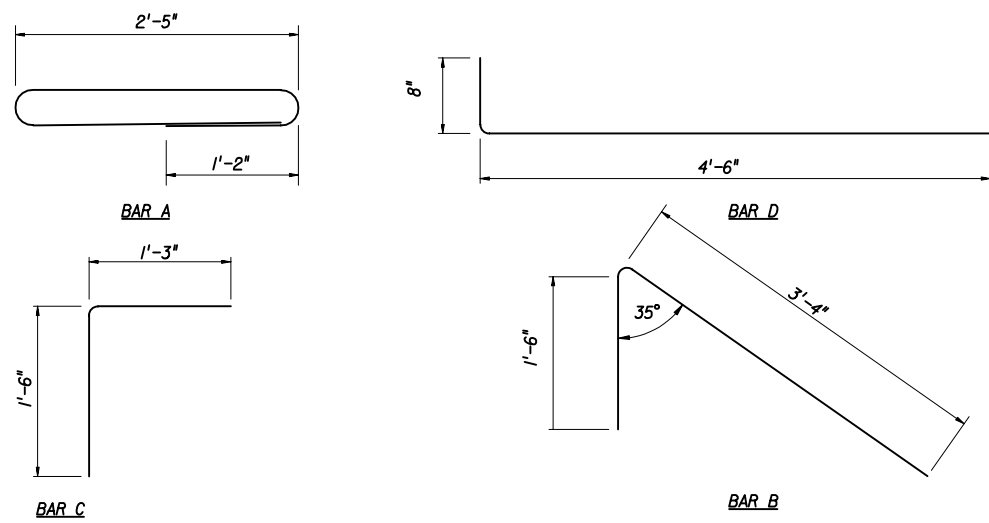
© 2003, TENSAR EARTH TECHNOLOGIES, INC.

STATE OF FLORIDA DEPARTMENT OF TRANSPORTATION				
<b>RETAINING WALL SYSTEM TENSAR EARTH TECHNOLOGIES MSE RETAINING WALL</b>				
Designed By	BS	3/03	Approved By <i>W. J. [Signature]</i> State Structures Design Engineer	
Drawn By	WL	3/03	Revision	Sheet No.
Checked By	JSB	3/03	04	12 of 17
				Index No. <b>5025</b>

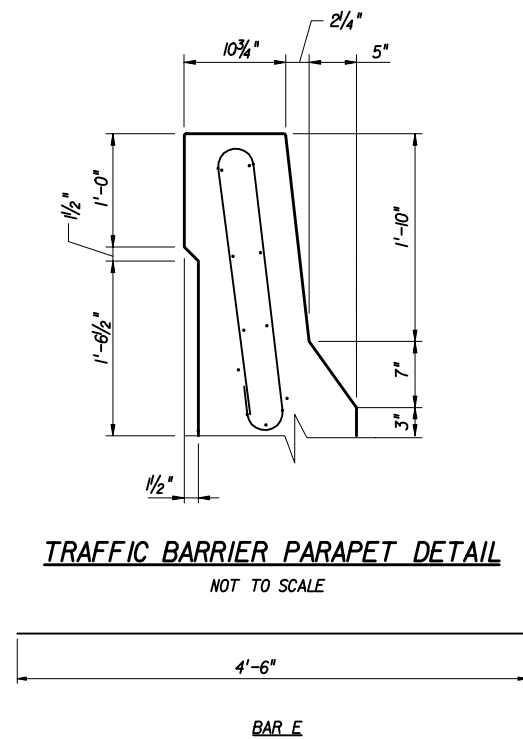


- NOTES:**
- A. 1/2" EXPANSION JOINT MATERIAL SHALL BE PROVIDED BETWEEN C.I.P. CONCRETE AND PRECAST CONCRETE PANEL
  - B. ALL LONGITUDINAL BARS SHALL BE #4 BARS WITH A MAXIMUM SPACING 1' - 6" O.C.
  - C. 3 #9 SHEAR DOWELS - 3' LONG REQ'D AT EXPANSION JOINTS IF UNIT IS LESS THAN 3 PANELS LONG.
  - D. 2" MIN. CLEARANCE ON ALL BARS EXCEPT WHERE SHOWN

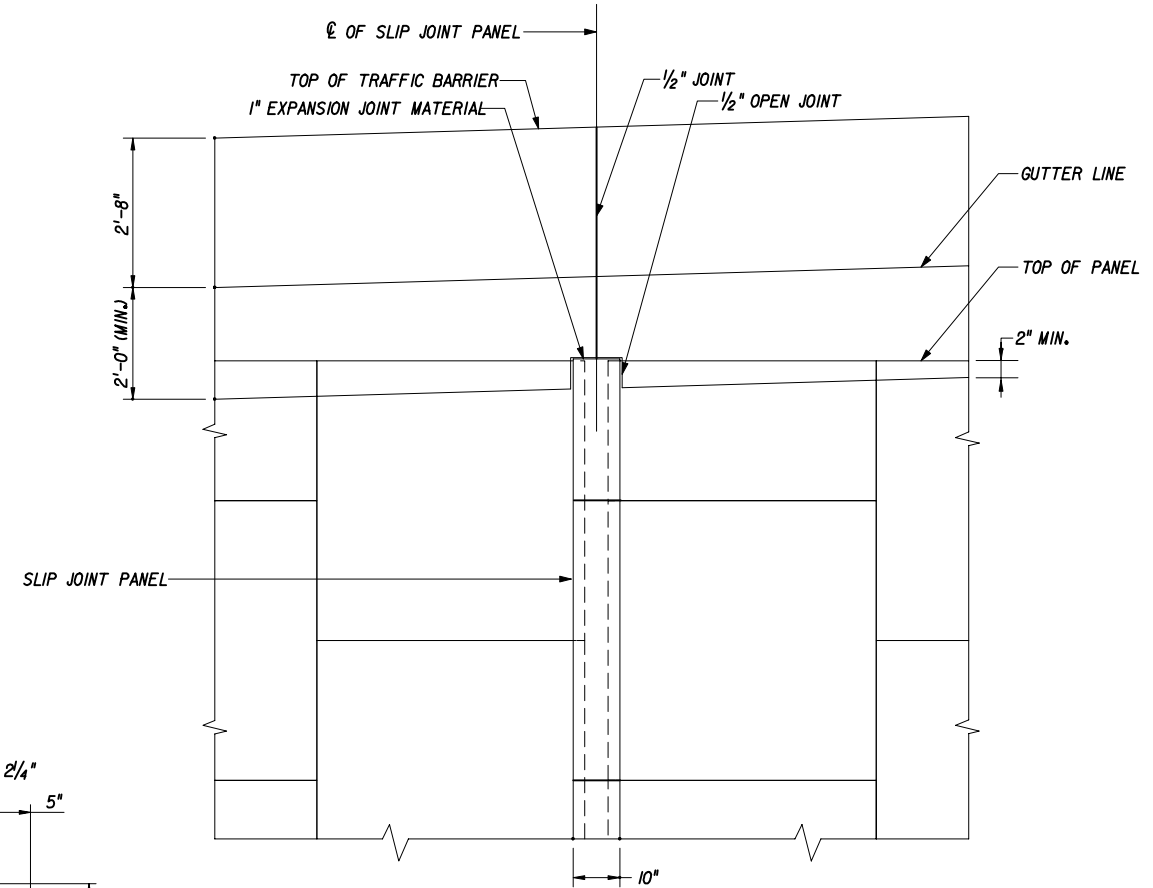
**C.I.P. CONCRETE TRAFFIC BARRIER**  
NOT TO SCALE



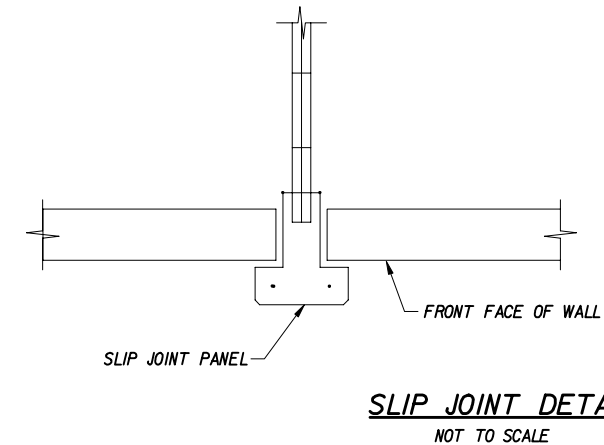
**BAR BENDING DETAIL**  
NOT TO SCALE



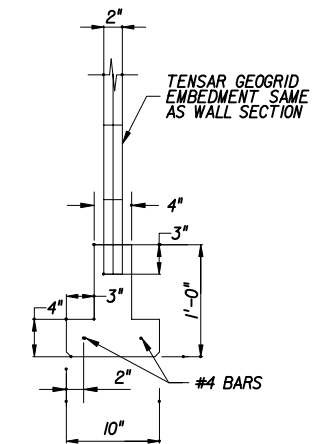
**TRAFFIC BARRIER PARAPET DETAIL**  
NOT TO SCALE



**C.I.P. TRAFFIC BARRIER OVER SLIP JOINT PANEL**



**SLIP JOINT DETAIL**  
NOT TO SCALE



THIS SYSTEM MAY BE USED IN ALL ENVIRONMENTS.

THIS DESIGN IS BASED UPON SPECIFIC PROPERTIES OF TENSAR PRODUCTS (GEOGRIDS, DRAINAGE COMPOSITES AND EROSION MEDIA), WHICH ARE PROPRIETARY TO THE TENSAR CORPORATION 1210 CITIZENS PARKWAY, MORROW GA 30260. ANY SUBSTITUTION OF THE SPECIFIED PRODUCTS WILL INVALIDATE THIS DESIGN.

THIS DRAWING, DESIGN NOTES AND ASSOCIATED CALCULATIONS HAVE BEEN PREPARED BY TENSAR EARTH TECHNOLOGIES, INC. FOR PRELIMINARY DESIGN PURPOSES AND SHALL NOT BE USED FOR FINAL DESIGN OR CONSTRUCTION.

© 2003, TENSAR EARTH TECHNOLOGIES, INC.

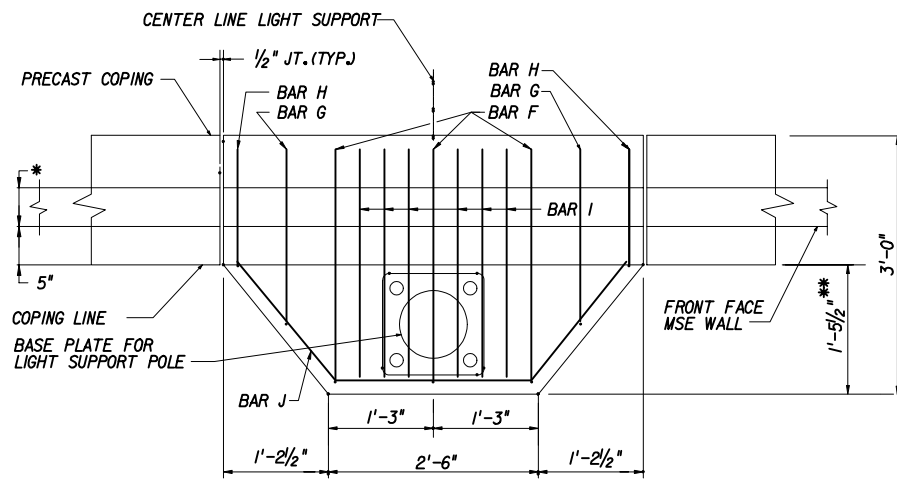
**TENSAR EARTH TECHNOLOGIES, INC.**  
5883 Glenridge Drive  
Suite 200  
Atlanta, GA 30328  
(404) 250-1290



STATE OF FLORIDA DEPARTMENT OF TRANSPORTATION

**RETAINING WALL SYSTEM**  
**TENSAR EARTH TECHNOLOGIES**  
**MSE RETAINING WALL**

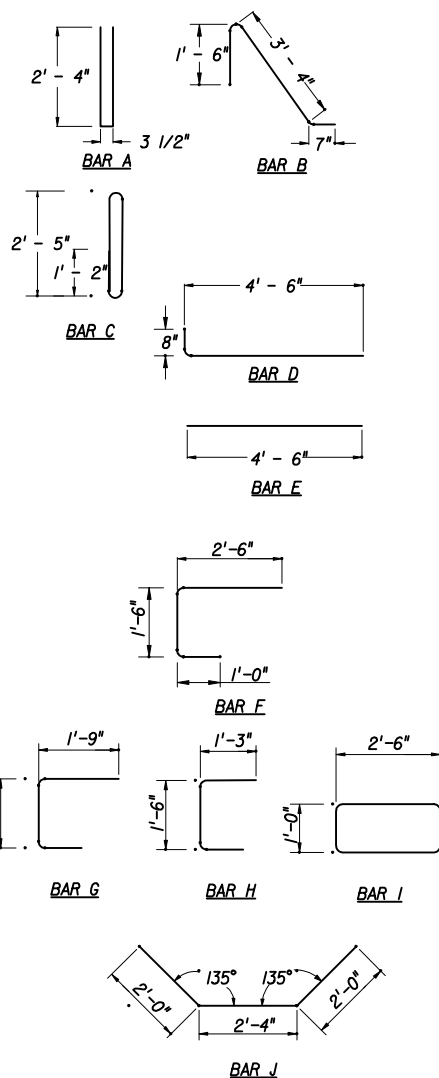
Names		Dates		Approved By	
Designed By	BS	3/03	[Signature]		
Drawn By	WL	3/03	Revision	Sheet No.	Index No.
Checked By	JSB	3/03	04	13 of 17	5025



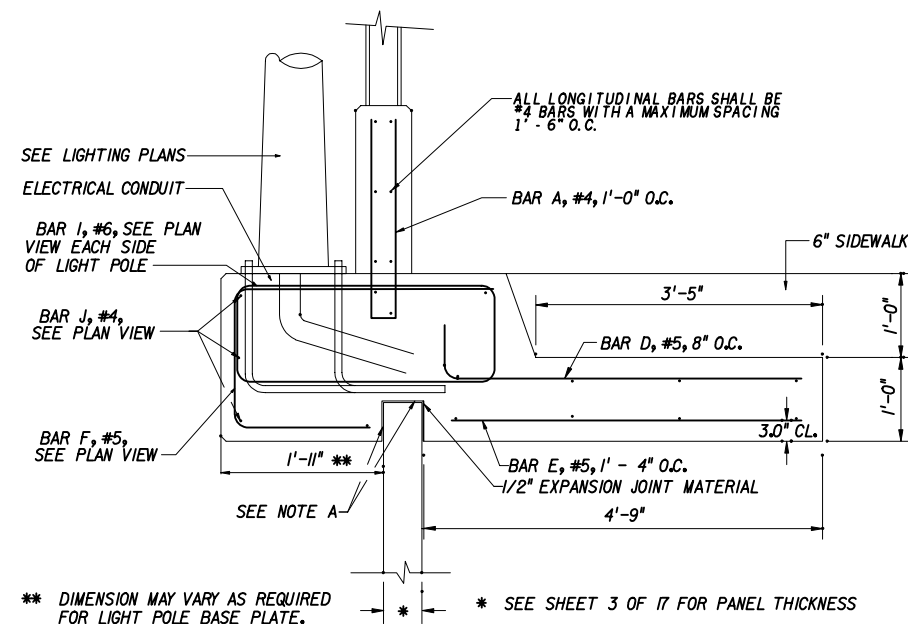
**PLAN**  
NOT TO SCALE

NOTE: REBAR IN BARRIER AND JUNCTION SLAB NOT SHOWN FOR CLARITY

NOTE: REFER TO LIGHT POLE PILASTER DETAILS IN BRIDGE PLANS FOR NOTES AND ADDITIONAL DETAILS (CONDUIT, JUNCTION BOXES, ETC.)



**BAR BENDING DETAIL**  
NOT TO SCALE

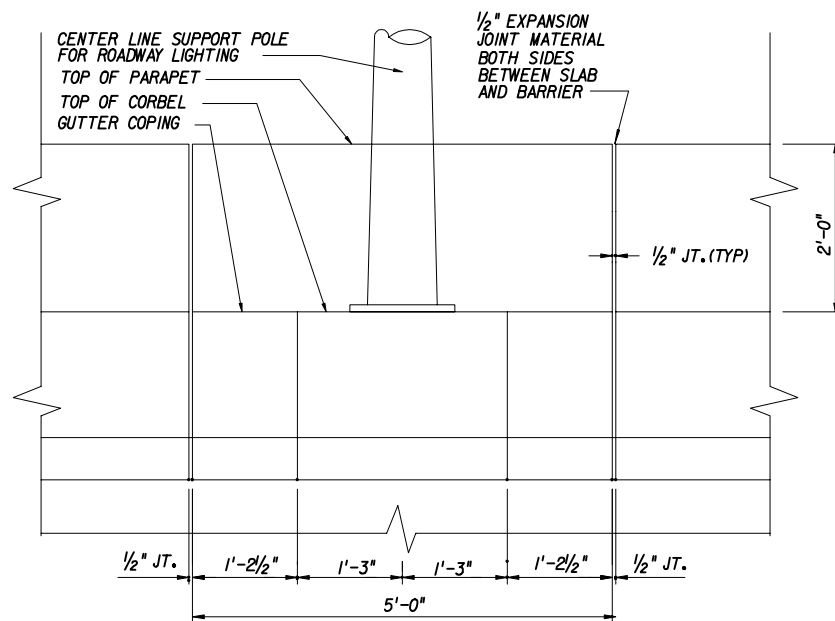


**C.I.P. BARRIER AND JUNCTION SLAB DETAIL AT LIGHT POLE**  
NOT TO SCALE

\*\* DIMENSION MAY VARY AS REQUIRED FOR LIGHT POLE BASE PLATE.

\* SEE SHEET 3 OF 17 FOR PANEL THICKNESS

- NOTES:
- A. 1/2" EXPANSION JOINT MATERIAL SHALL BE PROVIDED BETWEEN CAST IN PLACE CONCRETE AND PRECAST CONCRETE PANEL.
  - B. 3 #9 SHEAR DOWELS - 3' LONG REQUIRED AT EXPANSION JOINT IF UNIT IS LESS THAN 3 PANELS LONG.
  - C. MAINTAIN A 2" MIN. CLEARANCE ON ALL BARS, EXCEPT WHERE NOTED OTHERWISE.



**PARTIAL ELEVATION**

THIS SYSTEM MAY BE USED IN ALL ENVIRONMENTS.

THIS DESIGN IS BASED UPON SPECIFIC PROPERTIES OF TENSAR PRODUCTS (GEOGRIDS, DRAINAGE COMPOSITES AND EROSION MEDIA), WHICH ARE PROPRIETARY TO THE TENSAR CORPORATION 1210 CITIZENS PARKWAY, MORROW GA 30260. ANY SUBSTITUTION OF THE SPECIFIED PRODUCTS WILL INVALIDATE THIS DESIGN.

THIS DRAWING, DESIGN NOTES AND ASSOCIATED CALCULATIONS HAVE BEEN PREPARED BY TENSAR EARTH TECHNOLOGIES, INC. FOR PRELIMINARY DESIGN PURPOSES AND SHALL NOT BE USED FOR FINAL DESIGN OR CONSTRUCTION.


**TENSAR EARTH TECHNOLOGIES, INC.**  
5883 Glenridge Drive  
Suite 200  
Atlanta, GA 30328  
(404) 250-1290

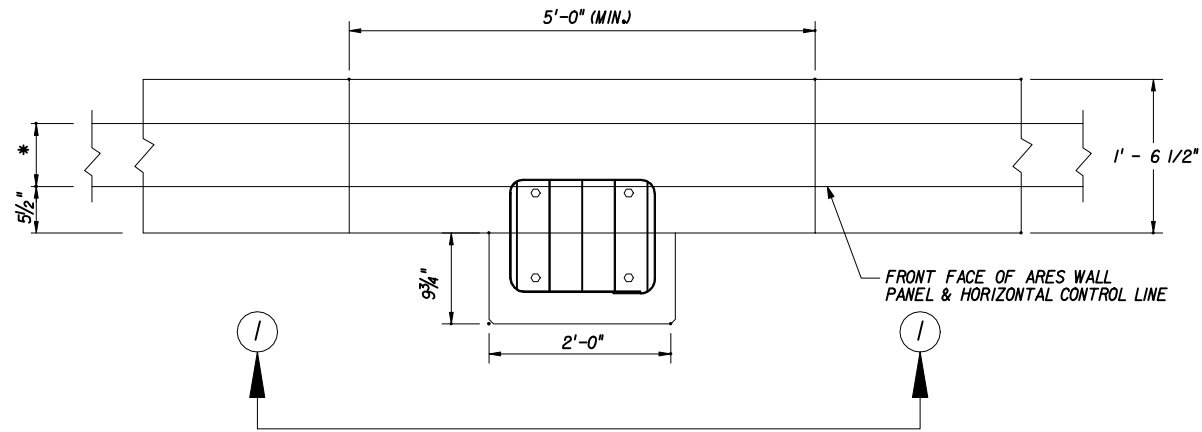


© 2003, TENSAR EARTH TECHNOLOGIES, INC.

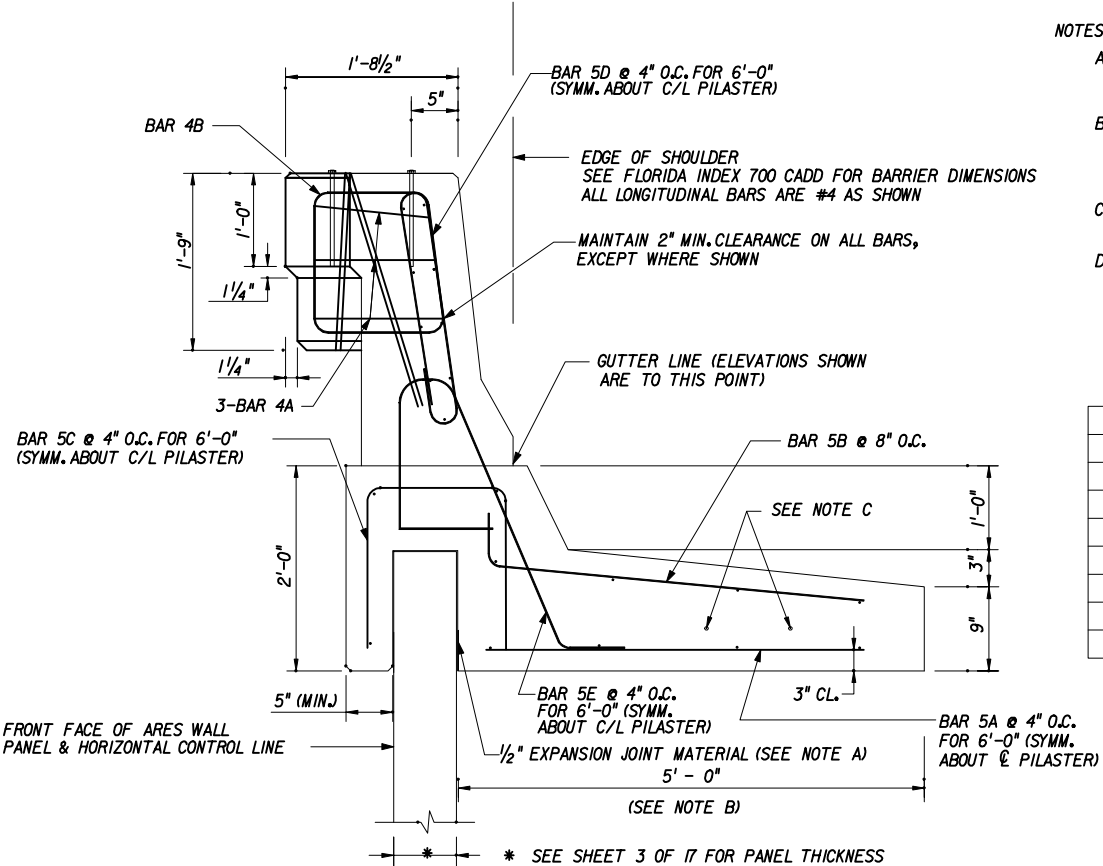
STATE OF FLORIDA DEPARTMENT OF TRANSPORTATION

**RETAINING WALL SYSTEM**  
**TENSAR EARTH TECHNOLOGIES**  
**MSE RETAINING WALL**

Names	Dates	Approved By				
Designed By	BS	3/03	 State Structures Design Engineer			
Drawn By	WL	3/03			Revision	Sheet No.
Checked By	JSB	3/03			04	14 of 17
						5025



2 PLAN VIEW AT LITE POLE  
NOT TO SCALE



3 C.I.P. CONCRETE TRAFFIC BARRIER AT LIGHT PILE  
NOT TO SCALE

THIS DESIGN IS BASED UPON SPECIFIC PROPERTIES OF TENSAR PRODUCTS (GEOGRIDS, DRAINAGE COMPOSITES AND EROSION MEDIA), WHICH ARE PROPRIETARY TO THE TENSAR CORPORATION 1210 CITIZENS PARKWAY, MORROW GA 30260. ANY SUBSTITUTION OF THE SPECIFIED PRODUCTS WILL INVALIDATE THIS DESIGN.

THIS DRAWING, DESIGN NOTES AND ASSOCIATED CALCULATIONS HAVE BEEN PREPARED BY TENSAR EARTH TECHNOLOGIES, INC. FOR PRELIMINARY DESIGN PURPOSES AND SHALL NOT BE USED FOR FINAL DESIGN OR CONSTRUCTION.

© 2003, TENSAR EARTH TECHNOLOGIES, INC.

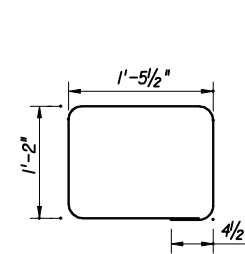
**TENSAR**  
EARTH TECHNOLOGIES, INC.  
5883 Glenridge Drive  
Suite 200  
Atlanta, GA 30328  
(404) 250-1290



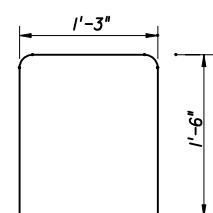
NOTES:

- A. POSITIVE BOND BREAKER SHALL BE PROVIDED BETWEEN CAST IN PLACE CONCRETE AND PRECAST CONCRETE PANEL.
- B. THE BARRIER JUNCTION SLAB SHALL HAVE THESE DIMENSIONS FOR ONE PRECAST UNIT EITHER SIDE OF LIGHT POLE BARRIER LONGITUDINAL BARS SHALL BE AS SHOWN ABOVE.
- C. 2 - #9 SHEAR DOWELS - 3' - 0" LONG REFER TO PRECAST BARRIER SHEET.
- D. LIGHT POLE SUPPLIER IS RESPONSIBLE FOR PROVIDING ANCHOR BOLTS THAT EFFECTIVELY TRANSMIT THE LIGHT POLE LOADS TO THE PILASTER AND FIT THE REINFORCING CAGE.

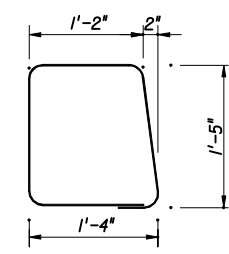
BAR	QTY
4A	3
4B	5
5A	18
5B	9
5C	18
5D	18
5E	18



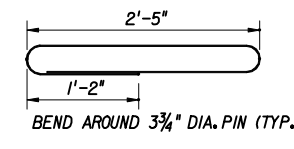
BAR 4A



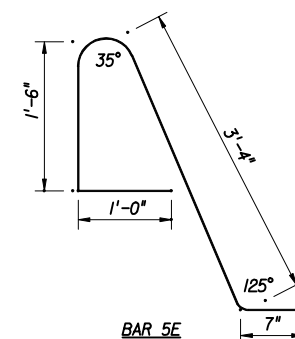
BAR 5C



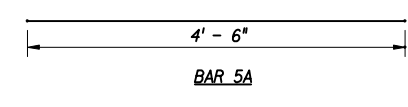
BAR 4B



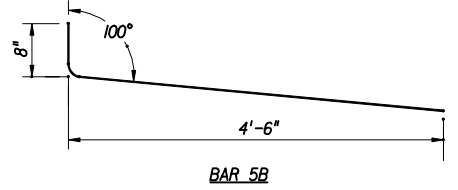
BAR 5D



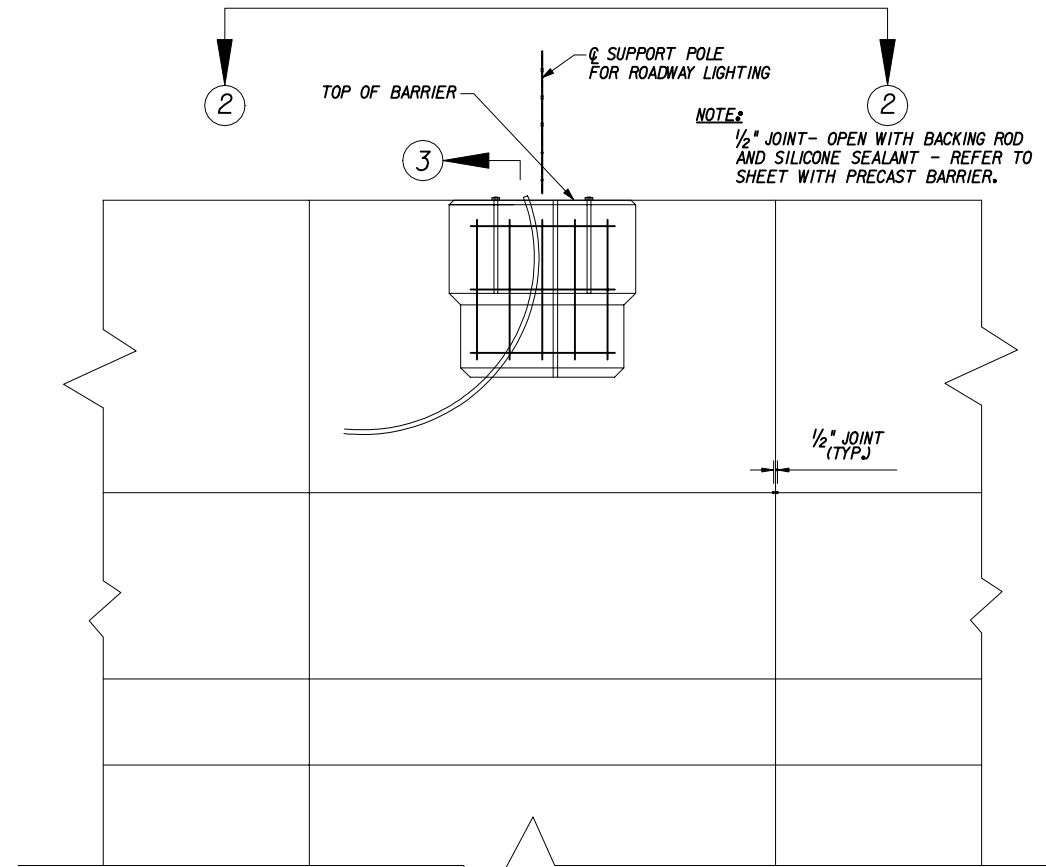
BAR 5E



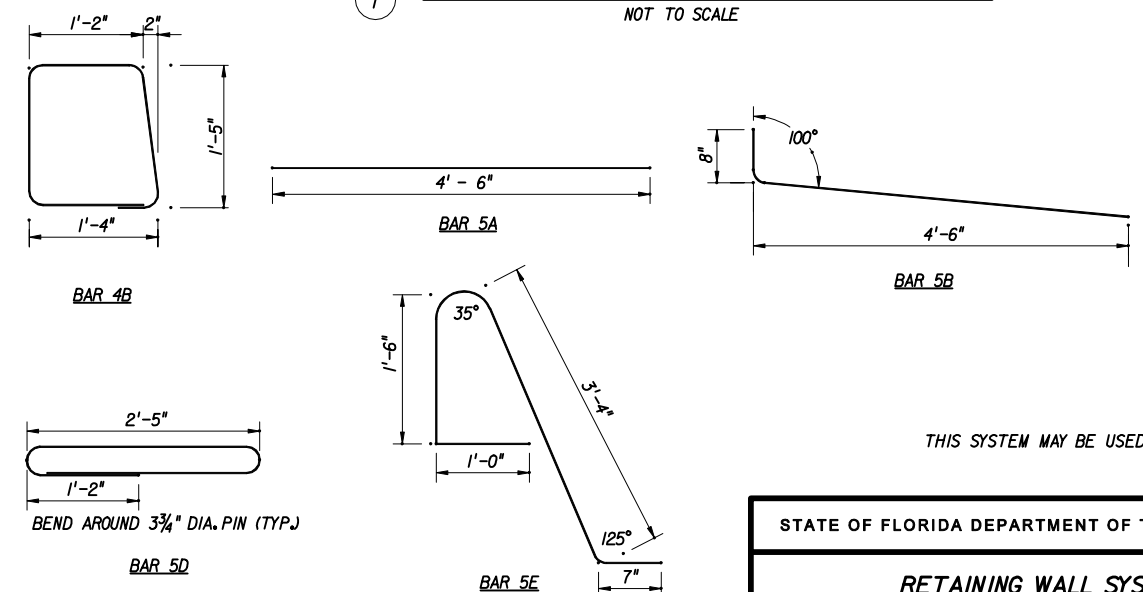
BAR 5A



BAR 5B



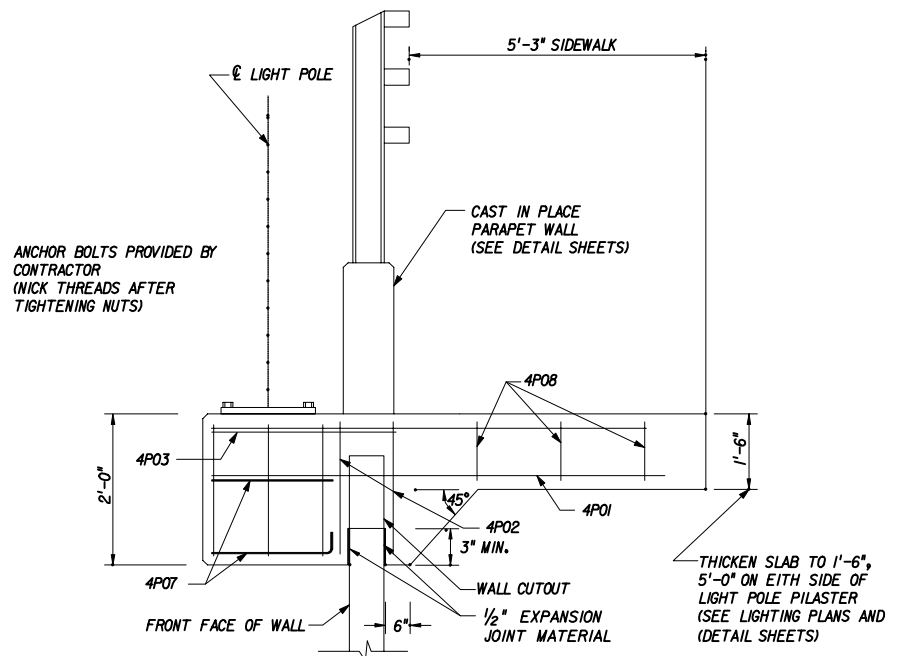
1 PARTIAL ELEVATION AT LIGHT POLE  
NOT TO SCALE



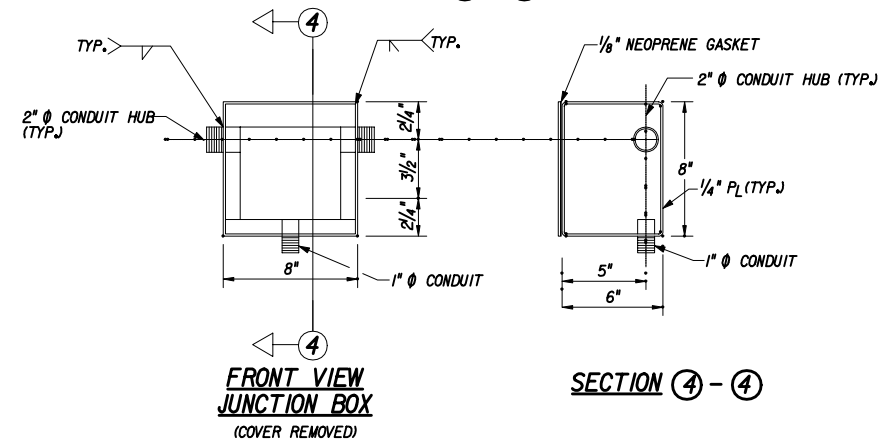
4 BAR BENDING DETAIL  
NOT TO SCALE

THIS SYSTEM MAY BE USED IN ALL ENVIRONMENTS

STATE OF FLORIDA DEPARTMENT OF TRANSPORTATION				
<b>RETAINING WALL SYSTEM TENSAR EARTH TECHNOLOGIES MSE RETAINING WALL</b>				
Names	Dates	Approved By <i>[Signature]</i>		
Designed By BS	3/03	State Structures Design Engineer		
Drawn By WL	3/03	Revision	Sheet No.	Index No.
Checked By JSB	3/03	04	15 of 17	5025

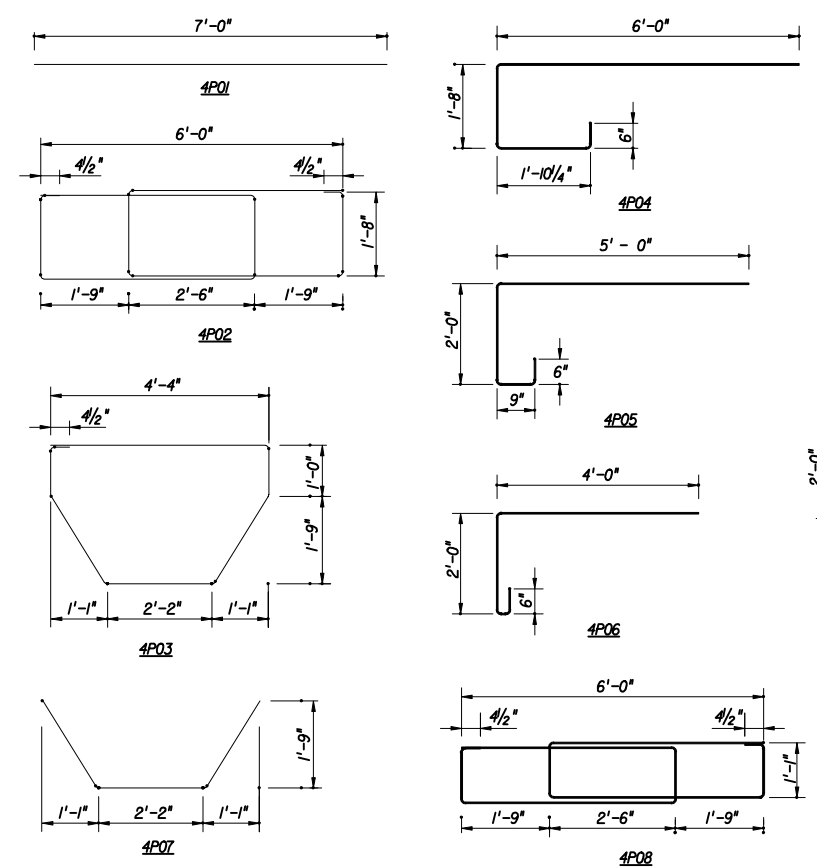


SECTION 3-3



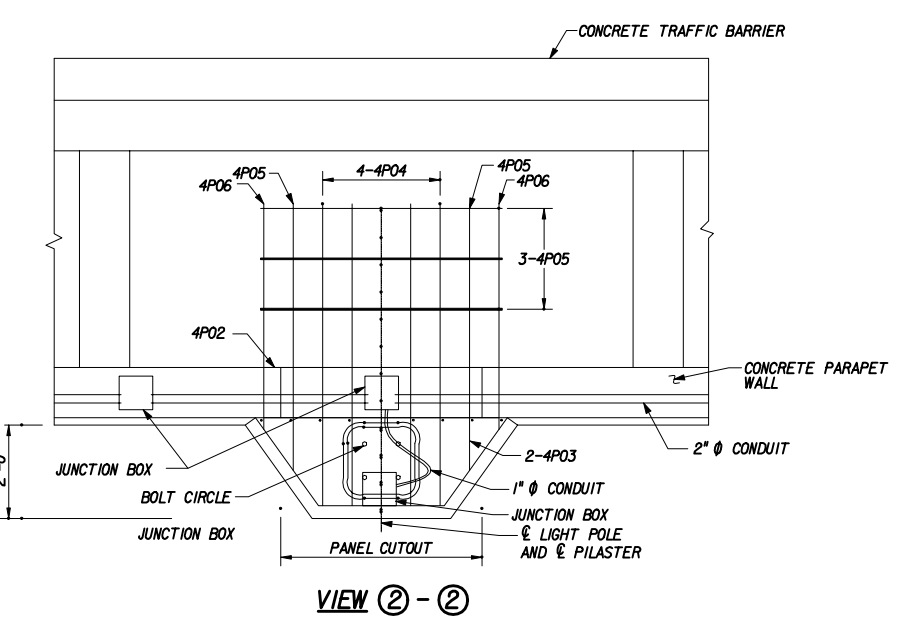
FRONT VIEW JUNCTION BOX (COVER REMOVED)

SECTION 4-4

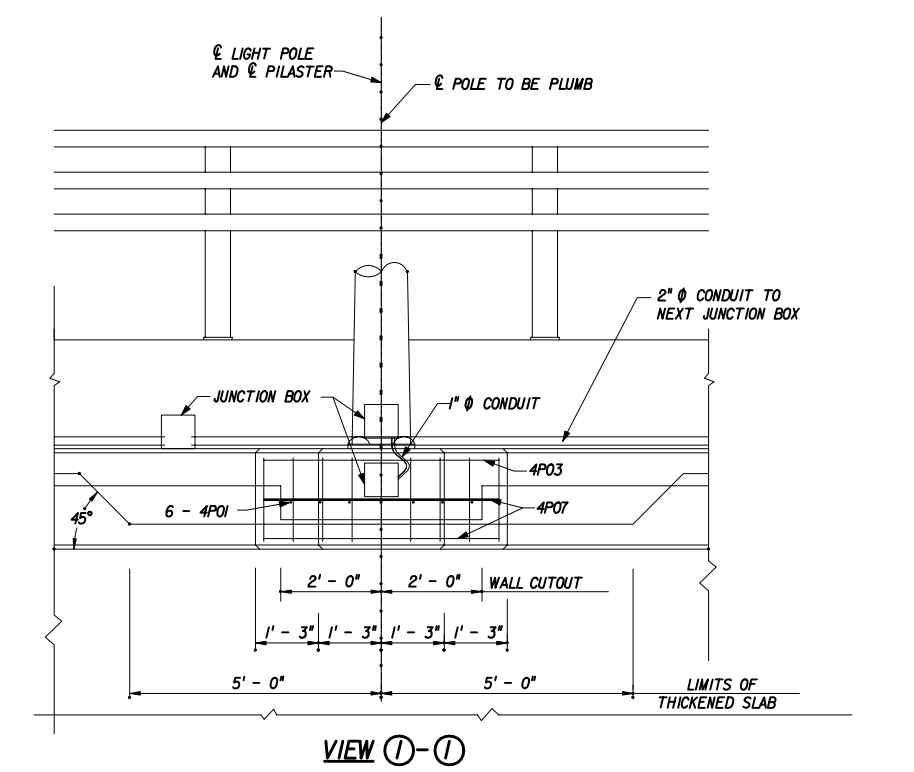


BAR BENDING DIAGRAM

BILL OF REINFORCING STEEL			
MARK	SIZE	NO. REQUIRED	LENGTH
4P01	4	6	7'-0"
4P02	4	2	24'-5"
4P03	4	1	14'-9"
4P04	4	4	9'-8"
4P05	4	2	7'-11"
4P07	4	2	6'-2"
4P07	4	2	6'-4"
4P08	4	3	22'-1"



VIEW 2-2



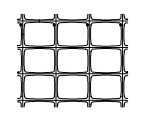
VIEW 1-1

THIS DESIGN IS BASED UPON SPECIFIC PROPERTIES OF TENSAR PRODUCTS (GEOGRIDS, DRAINAGE COMPOSITES AND EROSION MEDIA), WHICH ARE PROPRIETARY TO THE TENSAR CORPORATION 1210 CITIZENS PARKWAY, MORROW GA 30260. ANY SUBSTITUTION OF THE SPECIFIED PRODUCTS WILL INVALIDATE THIS DESIGN.

THIS DRAWING, DESIGN NOTES AND ASSOCIATED CALCULATIONS HAVE BEEN PREPARED BY TENSAR EARTH TECHNOLOGIES, INC. FOR PRELIMINARY DESIGN PURPOSES AND SHALL NOT BE USED FOR FINAL DESIGN OR CONSTRUCTION.

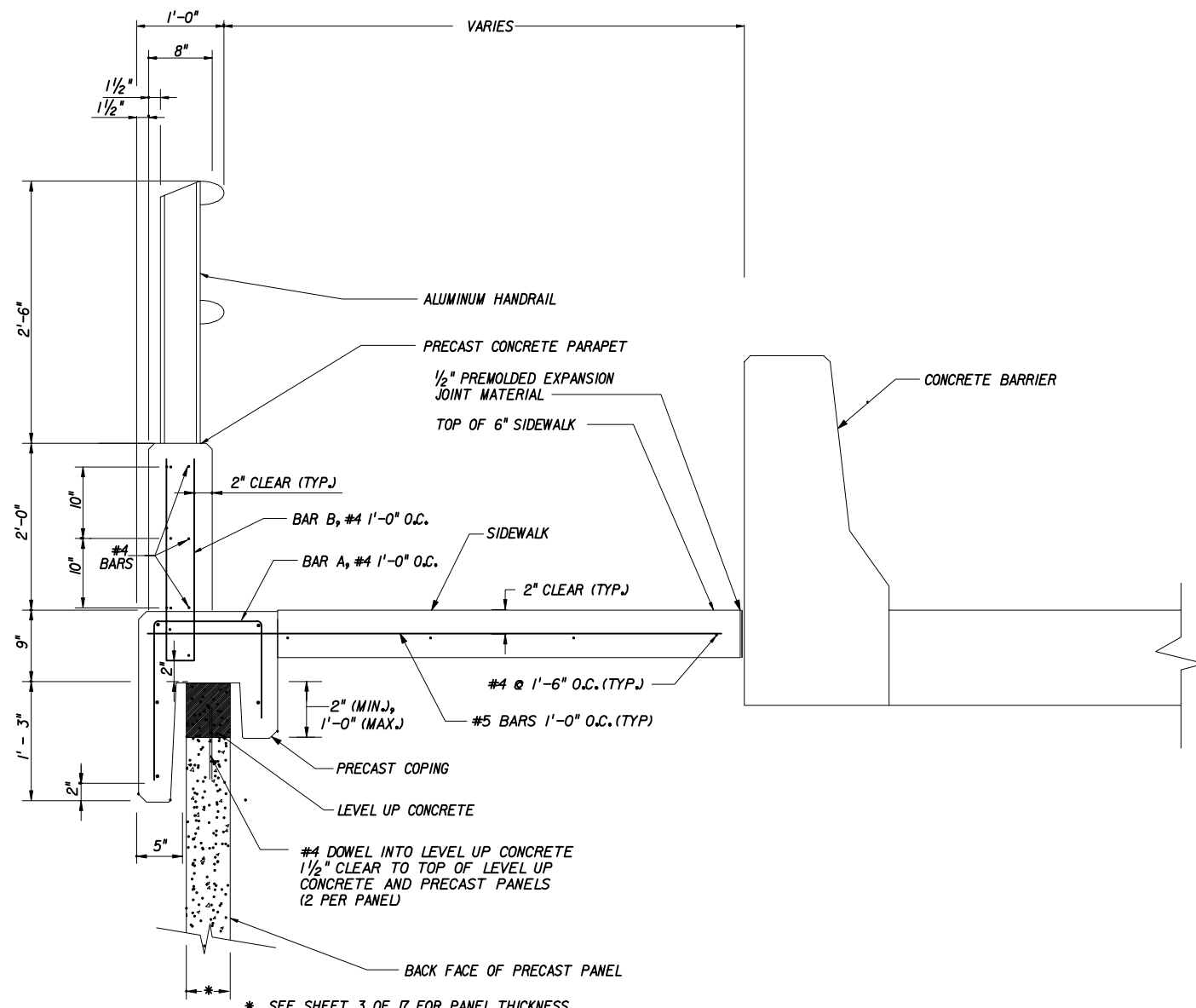
© 2003, TENSAR EARTH TECHNOLOGIES, INC.

**TENSAR EARTH TECHNOLOGIES, INC.**  
 5883 Glenridge Drive  
 Suite 200  
 Atlanta, GA 30328  
 (404) 250-1290

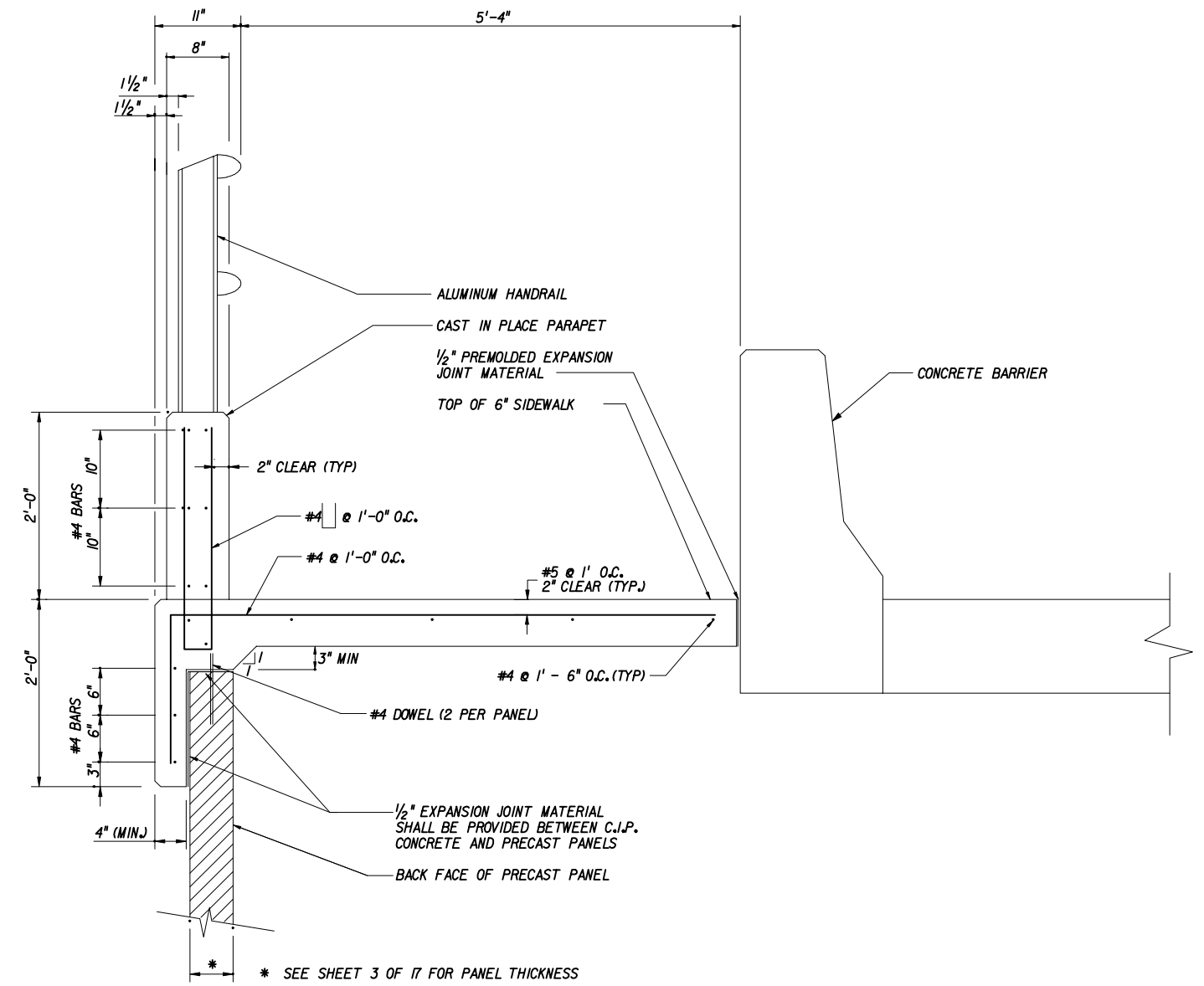


THIS SYSTEM MAY BE USED IN ALL ENVIRONMENTS.

STATE OF FLORIDA DEPARTMENT OF TRANSPORTATION				
<b>RETAINING WALL SYSTEM TENSAR EARTH TECHNOLOGIES MSE RETAINING WALL</b>				
Names	Dates	Approved By <i>[Signature]</i>		
Designed By BS	3/03	State Structures Design Engineer		
Drawn By WL	3/03	Revision	Sheet No.	Index No.
Checked By JSB	3/03	04	16 of 17	5025



**PRECAST SADDLE WITH C.I.P. PARAPET AND SIDEWALK DETAIL**  
NOT TO SCALE



**C.I.P. PARAPET DETAIL**  
NOT TO SCALE

THIS SYSTEM MAY BE USED IN ALL ENVIRONMENTS.

THIS DESIGN IS BASED UPON SPECIFIC PROPERTIES OF TENSAR PRODUCTS (GEOGRIDS, DRAINAGE COMPOSITES AND EROSION MEDIA), WHICH ARE PROPRIETARY TO THE TENSAR CORPORATION 1210 CITIZENS PARKWAY, MORROW GA 30260. ANY SUBSTITUTION OF THE SPECIFIED PRODUCTS WILL INVALIDATE THIS DESIGN.

THIS DRAWING, DESIGN NOTES AND ASSOCIATED CALCULATIONS HAVE BEEN PREPARED BY TENSAR EARTH TECHNOLOGIES, INC. FOR PRELIMINARY DESIGN PURPOSES AND SHALL NOT BE USED FOR FINAL DESIGN OR CONSTRUCTION.

© 2003, TENSAR EARTH TECHNOLOGIES, INC.

**TENSAR  
EARTH TECHNOLOGIES, INC.**  
5883 Glenridge Drive  
Suite 200  
Atlanta, GA 30328  
(404) 250-1290



STATE OF FLORIDA DEPARTMENT OF TRANSPORTATION				
<b>RETAINING WALL SYSTEM TENSAR EARTH TECHNOLOGIES MSE RETAINING WALL</b>				
Designed By	BS	3/03	Approved By <i>W. V. [Signature]</i> State Structures Design Engineer	
Drawn By	WL	3/03	Revision	Sheet No. Index No.
Checked By	JSB	3/03	04	17 of 17 5025