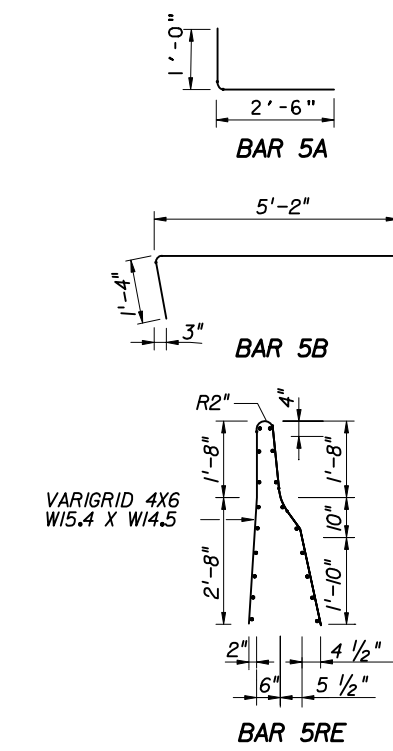
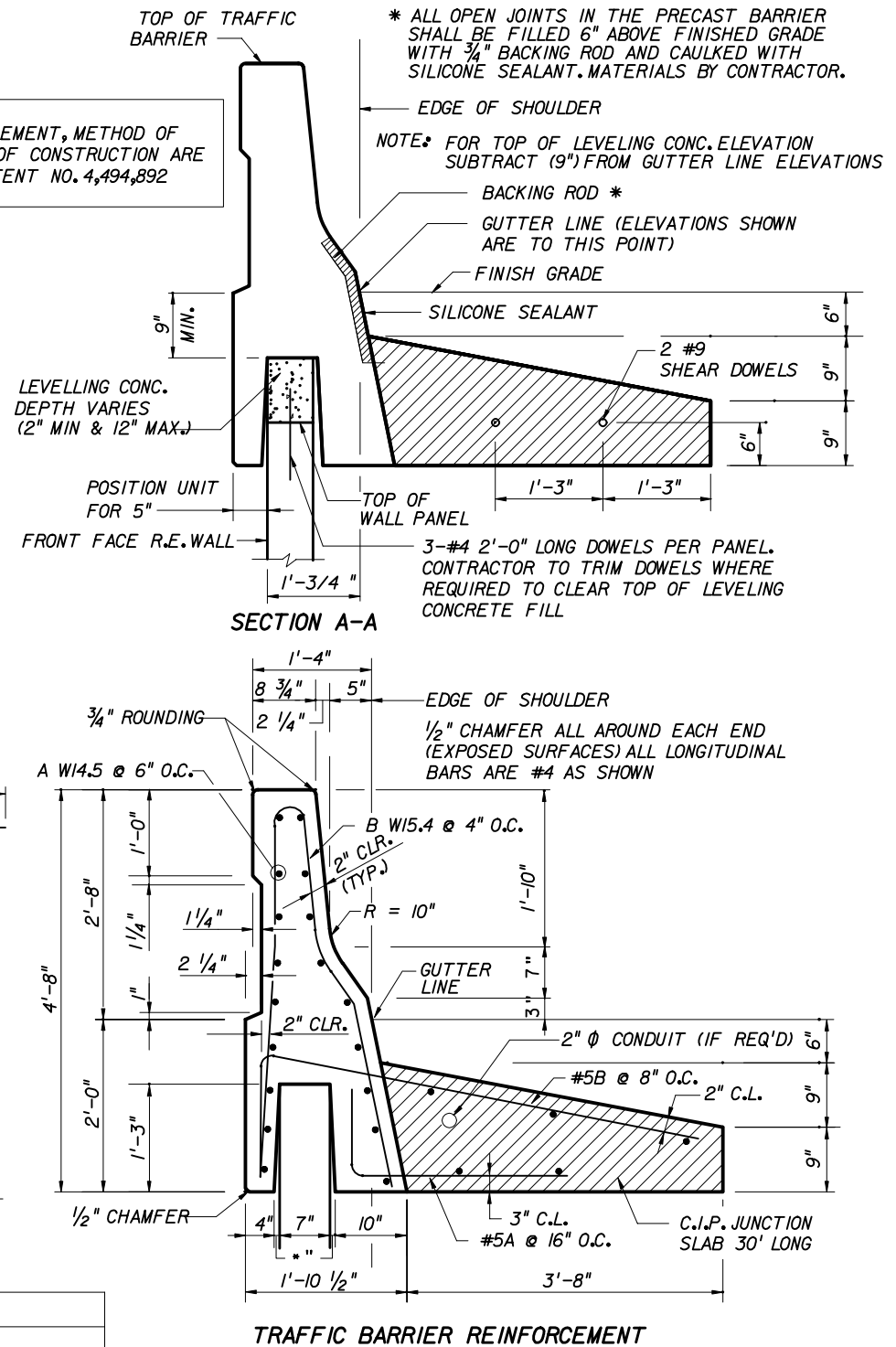


PRECAST TRAFFIC BARRIER PARTIAL ELEVATION



MARK	QUANTITY	REMARKS
5A	8	3'-6" LONG
5B	15	6'-6" LONG
A	VARIGRID	W14.5 @ 6" O.C.
B	VARIGRID	W15.4 @ 4" O.C.



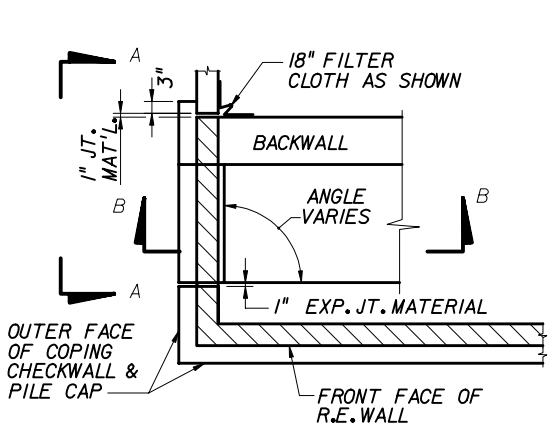
THIS SYSTEM SHALL BE USED IN SLIGHTLY OR MODERATELY AGGRESSIVE ENVIRONMENTS ONLY  
CRUCIFORM AND SQUARE PANELS

STATE OF FLORIDA DEPARTMENT OF TRANSPORTATION

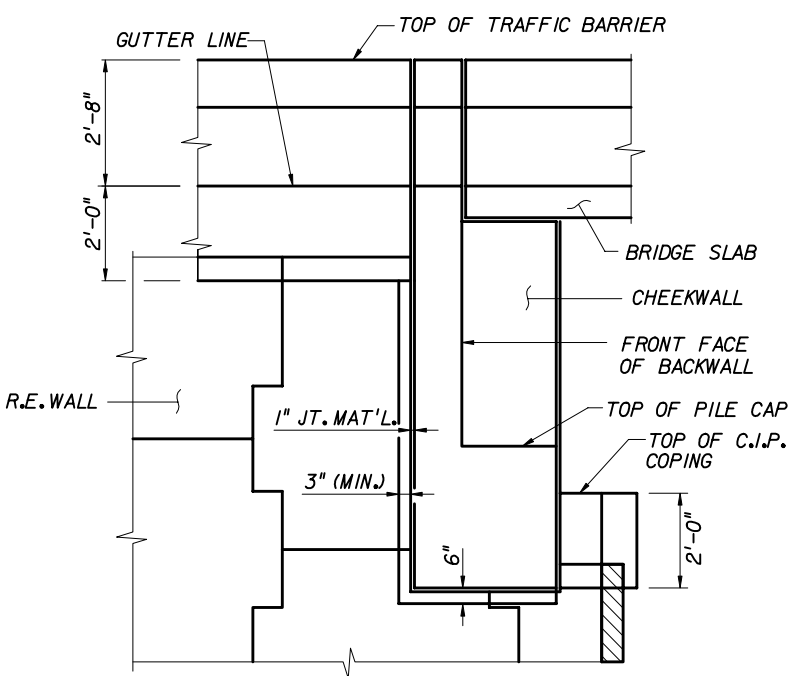
RETAINING WALL SYSTEM  
REINFORCED EARTH COMPANY  
REINFORCED EARTH WALL

Names	Dates	Approved By
Designed By		W. J. [Signature]
Drawn By		State Structures Design Engineer
Checked By		Revision Sheet No. Index No.
	00	8 of 14 5015

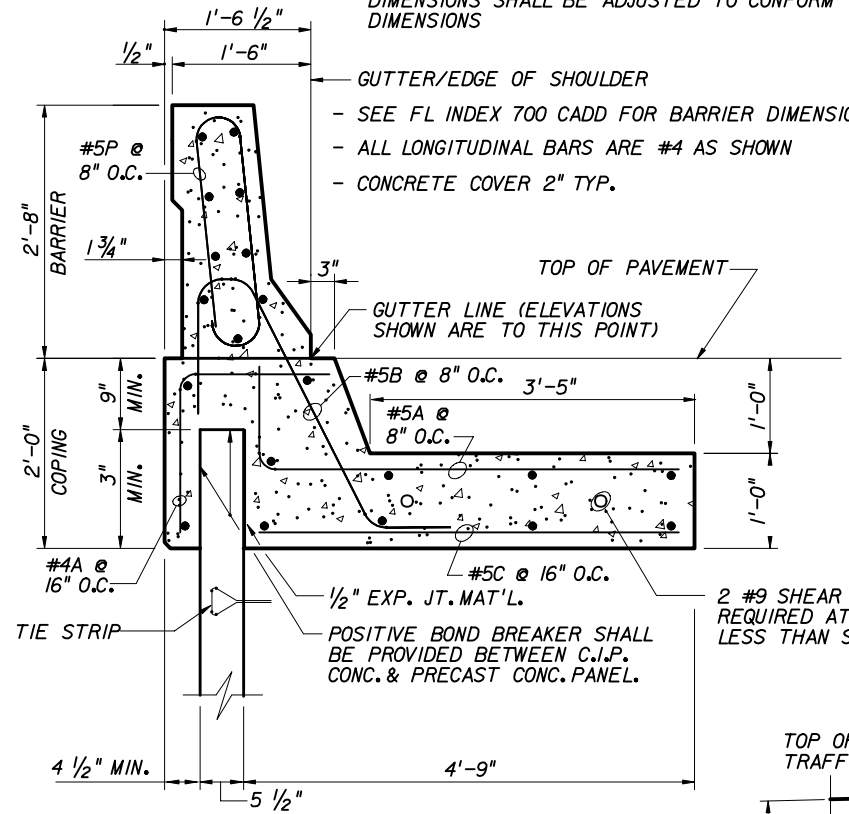
NOTE:  
IF SHORT C.I.P. BARRIER SECTIONS ARE TO BE CONSTRUCTED ADJACENT TO PRECAST BARRIER SECTIONS, THEN THIS SECTION'S DIMENSIONS SHALL BE ADJUSTED TO CONFORM TO THE PRECAST DIMENSIONS



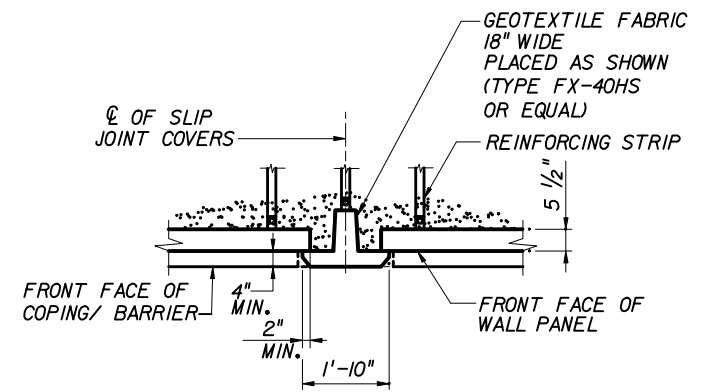
PLAN VIEW @ BEND (TYP.)



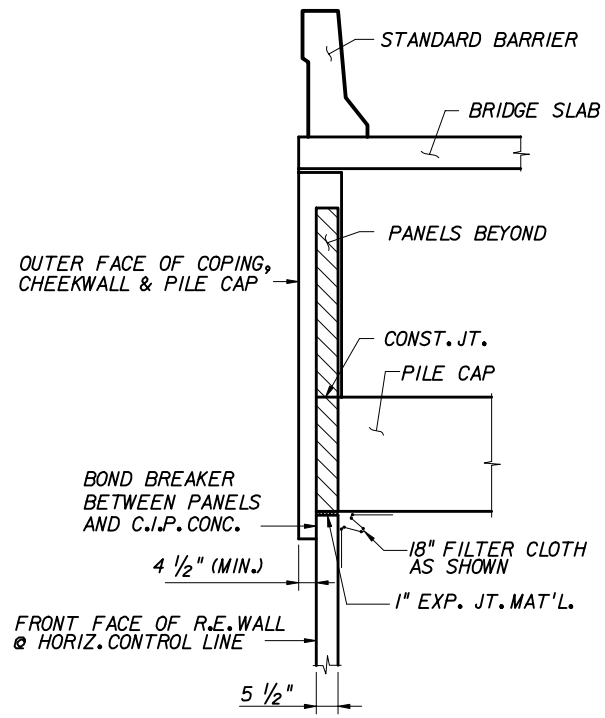
SECTION A-A



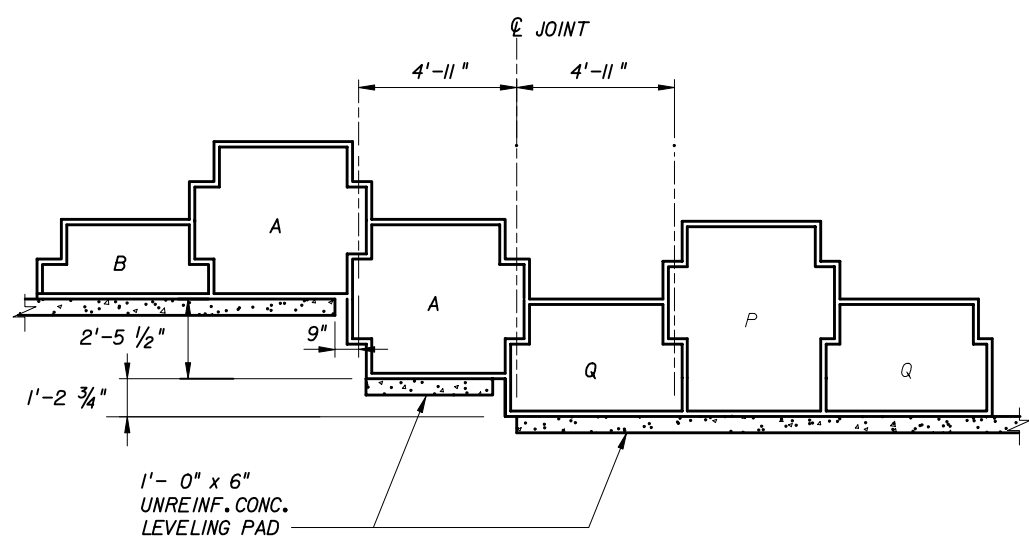
C.I.P. CONC. TRAFFIC BARRIER



SLIP JOINT COVER DETAIL

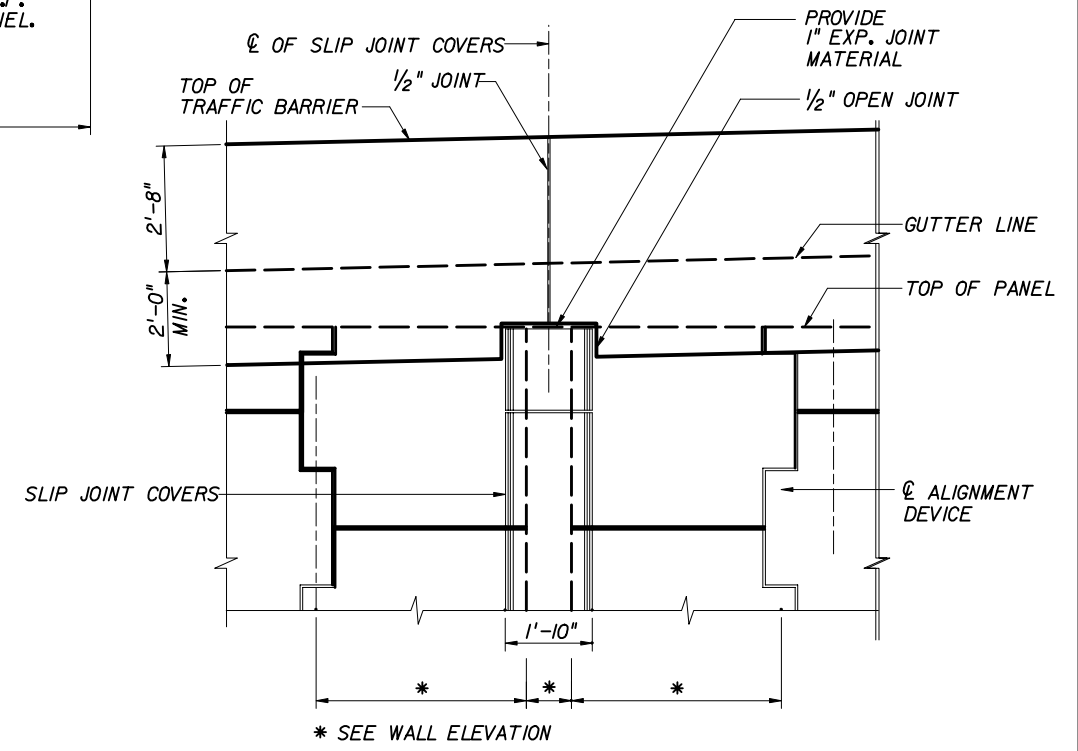


SECTION B-B



TYPICAL LEVELING PAD STEP DETAIL

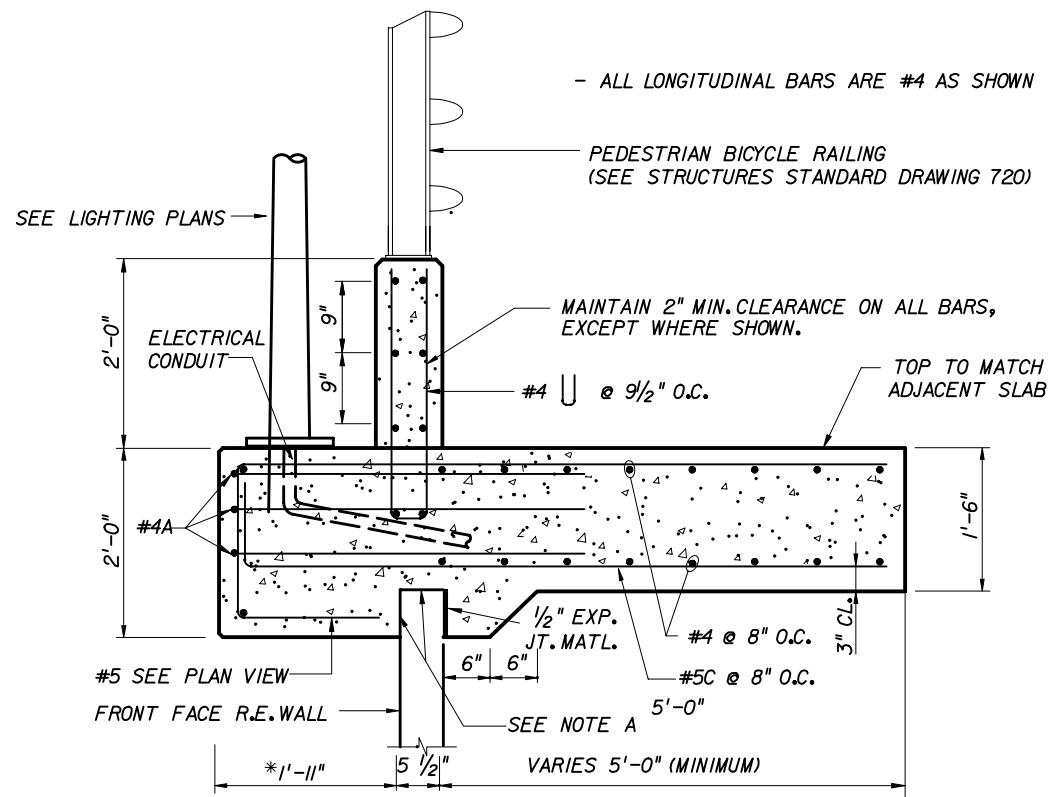
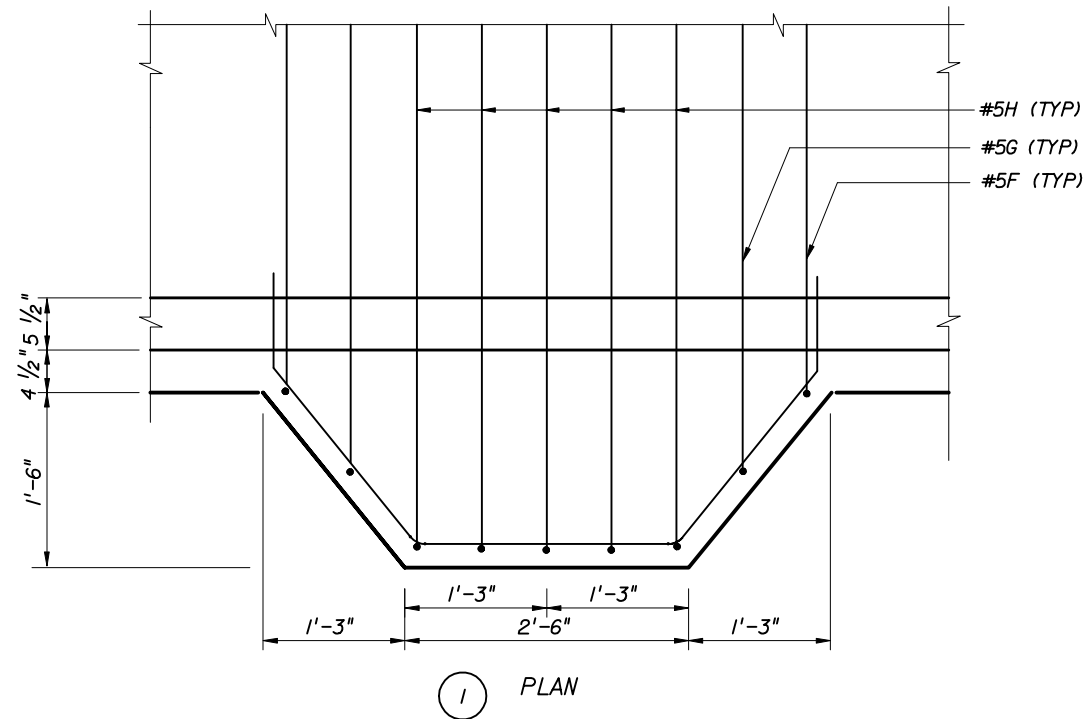
(LEVELING PAD DIMENSIONS ARE THE SAME FOR BOTH CRUCIFORM AND SQUARE PANELS, SEE WALL ELEVATIONS FOR PANEL TYPES AT STEPS)



C.I.P. TRAFFIC BARRIER OVER SLIP JOINT COVER

THIS SYSTEM SHALL BE USED IN SLIGHTLY OR MODERATELY AGGRESSIVE ENVIRONMENTS ONLY  
CRUCIFORM AND SQUARE PANELS

STATE OF FLORIDA DEPARTMENT OF TRANSPORTATION				
<b>RETAINING WALL SYSTEM REINFORCED EARTH COMPANY REINFORCED EARTH WALL</b>				
Designed By	Names	Dates	Approved By <i>W. J. [Signature]</i>	
Drawn By			State Structures Design Engineer	
Checked By			Revision	Sheet No. Index No.
			00	9 of 14 5015



NOTE A:  
POSITIVE BOND BREAKER SHALL BE PROVIDED BETWEEN C.I.P. CONCRETE AND CONCRETE PANEL

NOTE B:  
THE BARRIER JUNCTION SLAB SHALL HAVE THESE DIMENSIONS FOR ONE PRECAST UNIT EITHER SIDE OF LIGHT POLE BARRIER LONGITUDINAL BARS SHALL BE AS SHOWN ABOVE

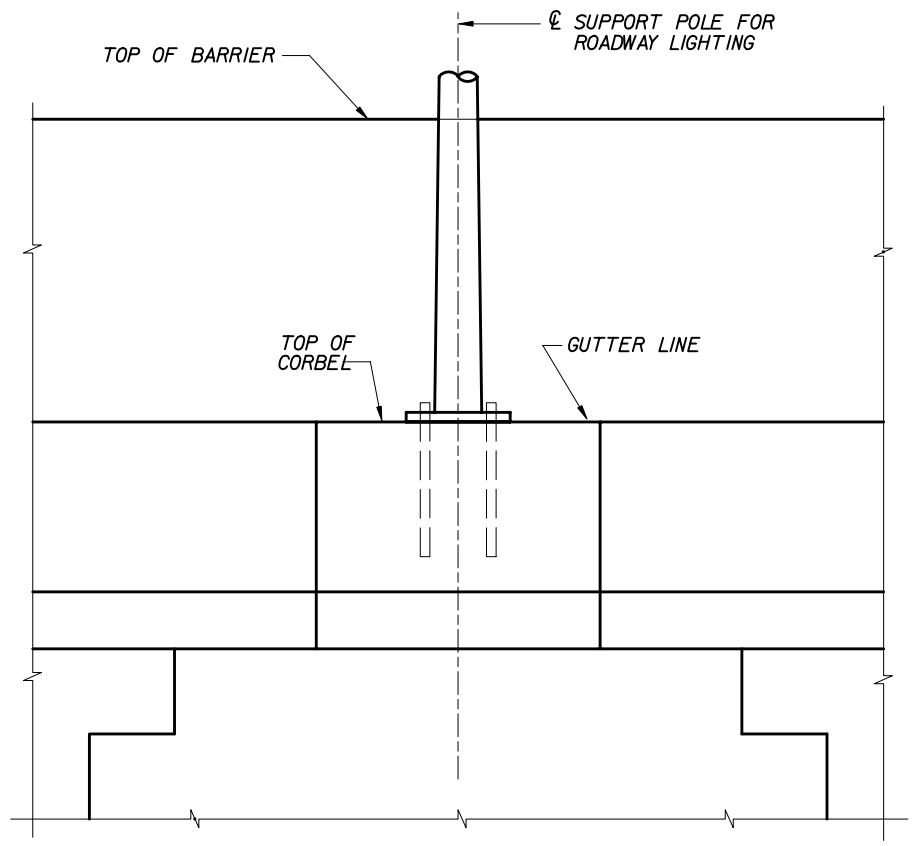
NOTE C:  
2 - #9 SHEAR DOWELS - 3'-0" LONG REFER TO PRECAST BARRIER SHEET

NOTE D:  
LIGHT POLE MANUFACTURER IS RESPONSIBLE FOR PROVIDING ANCHOR BOLTS THAT EFFECTIVELY TRANSMIT LOADS TO THE PILASTER AND FIT THE REINFORCING CAGE.

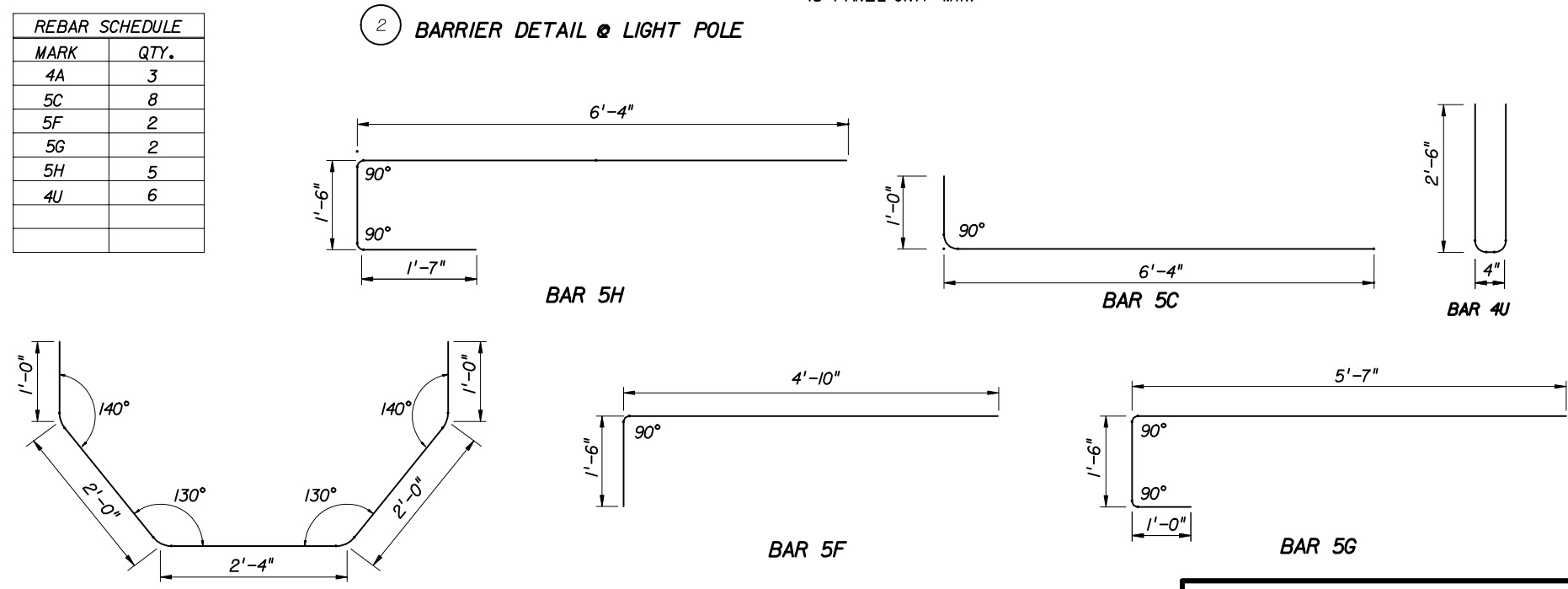
NOTE E:  
SEE STRUCTURES STANDARD DRAWING 500 FOR ADDITIONAL DETAILS.

\* DIMENSION MAY VARY AS REQUIRED FOR LIGHT POLE BASE PLATE.

(SEE NOTE B)  
(6-PANEL UNIT STD)  
(5-PANEL UNIT MIN)



REBAR SCHEDULE	
MARK	QTY.
4A	3
5C	8
5F	2
5G	2
5H	5
4U	6



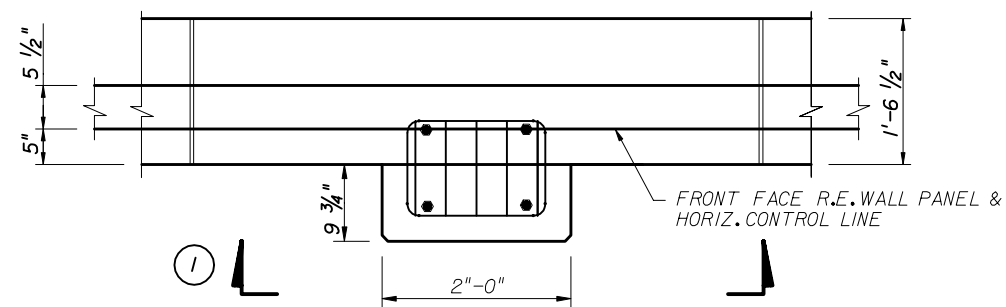
3 PARTIAL ELEVATION

2 BARRIER DETAIL @ LIGHT POLE

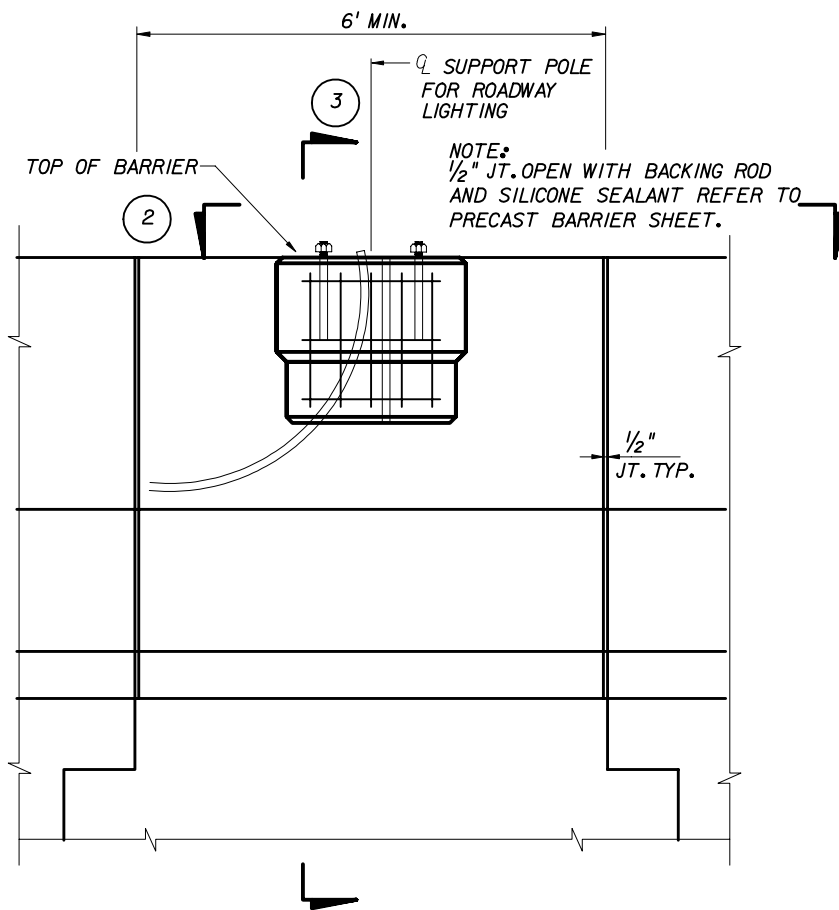
4 BAR BENDING DETAILS

THIS SYSTEM SHALL BE USED IN SLIGHTLY OR MODERATELY AGGRESSIVE ENVIRONMENTS ONLY  
CRUCIFORM AND SQUARE PANELS

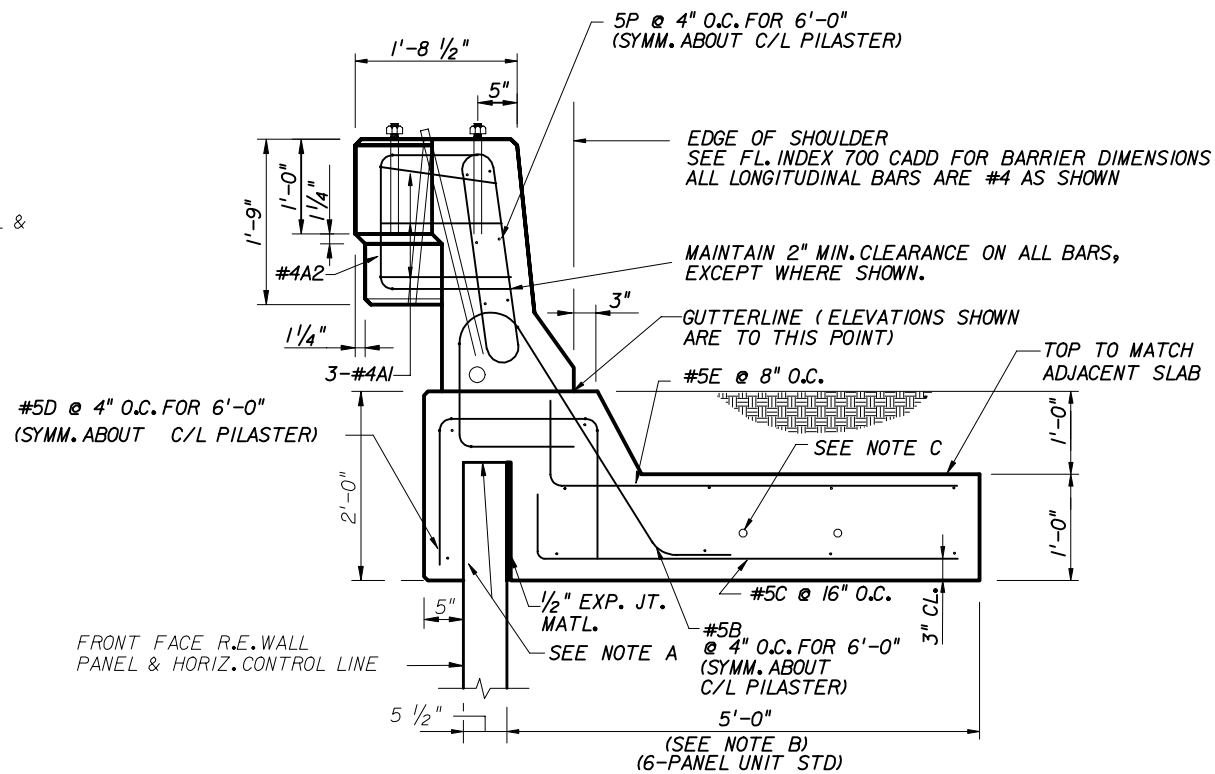
STATE OF FLORIDA DEPARTMENT OF TRANSPORTATION				
<b>RETAINING WALL SYSTEM REINFORCED EARTH COMPANY REINFORCED EARTH WALL</b>				
Designed By	Names	Dates	Approved By <i>W. J. [Signature]</i>	
Drawn By			Revision	Sheet No. 10 of 14
Checked By				Index No. 5015



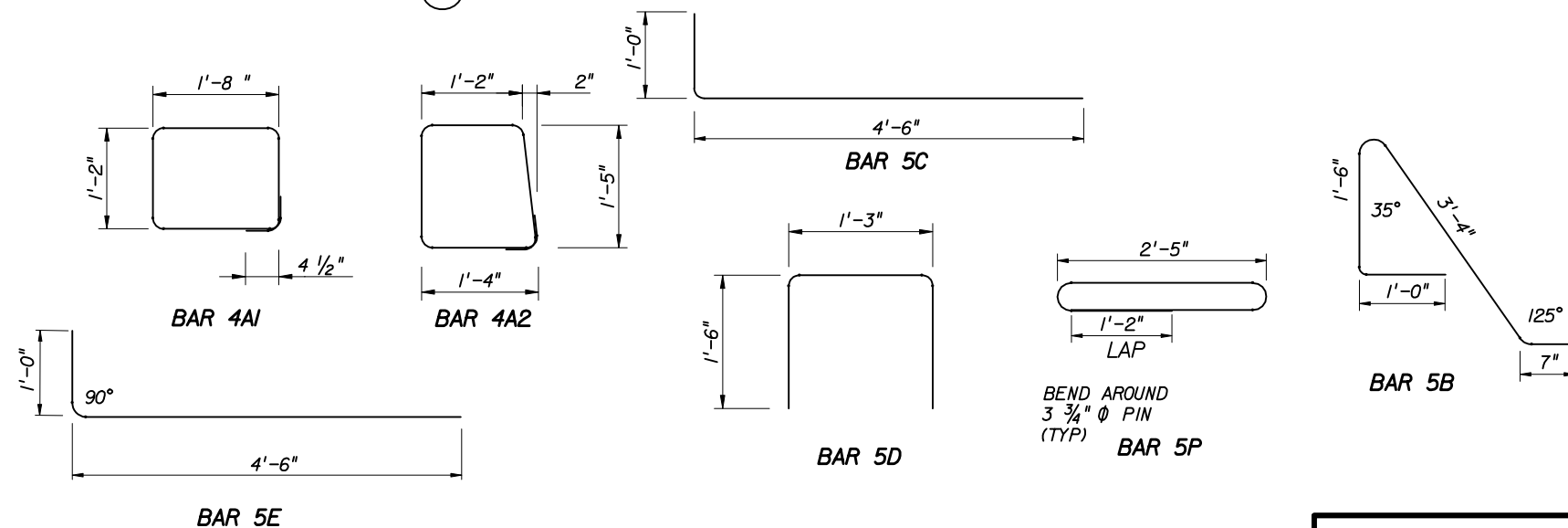
2 PLAN



1 PARTIAL ELEVATION



3 BARRIER DETAIL @ LIGHT POLE



4 BAR BENDING DETAILS

**NOTES:**

- A. POSITIVE BOND BREAKER SHALL BE PROVIDED BETWEEN CAST IN PLACE CONC. AND PRECAST CONC. PANEL.
- B. THE BARRIER JUNCTION SLAB SHALL HAVE THESE DIMENSIONS FOR ONE PRECAST UNIT EITHER SIDE OF LIGHT POLE BARRIER LONGITUDINAL BARS SHALL BE AS SHOWN ABOVE.
- C. 2 - #9 SHEAR DOWELS - 3'-0" LONG REFER TO PRECAST BARRIER SHEET
- D. LIGHT POLE SUPPLIER IS RESPONSIBLE FOR PROVIDING ANCHOR BOLTS THAT EFFECTIVELY TRANSMIT THE LIGHT POLE LOADS TO THE PILASTER AND FIT THE REINFORCING CAGE.
- E. SEE STRUCTURES STANDARD DRAWING 500 FOR ADDITIONAL DETAILS.

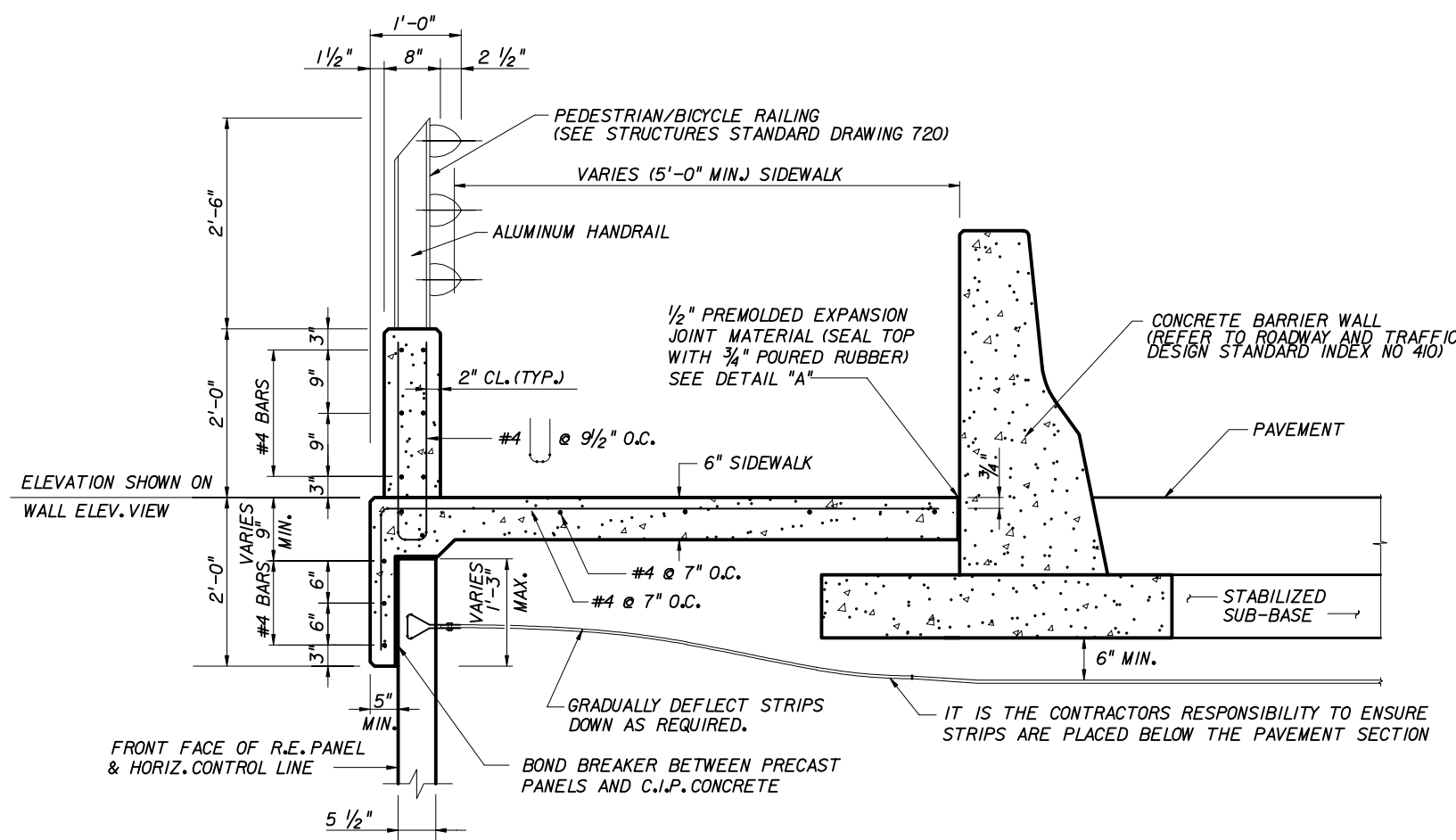
REBAR SCHEDULE	
MARK	QTY.
4A1	3
4A2	5
5B	18
5C	4
5D	18
5E	9
5P	18

THIS SYSTEM SHALL BE USED IN SLIGHTLY OR MODERATELY AGGRESSIVE ENVIRONMENTS ONLY  
CRUCIFORM AND SQUARE PANELS

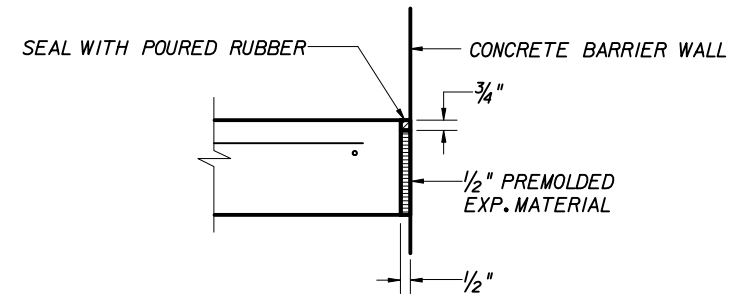
STATE OF FLORIDA DEPARTMENT OF TRANSPORTATION

RETAINING WALL SYSTEM  
REINFORCED EARTH COMPANY  
REINFORCED EARTH WALL

Names	Dates	Approved By		
Designed By		State Structures Design Engineer		
Drawn By				
Checked By				
		Revision	Sheet No.	Index No.
		00	11 of 14	5015



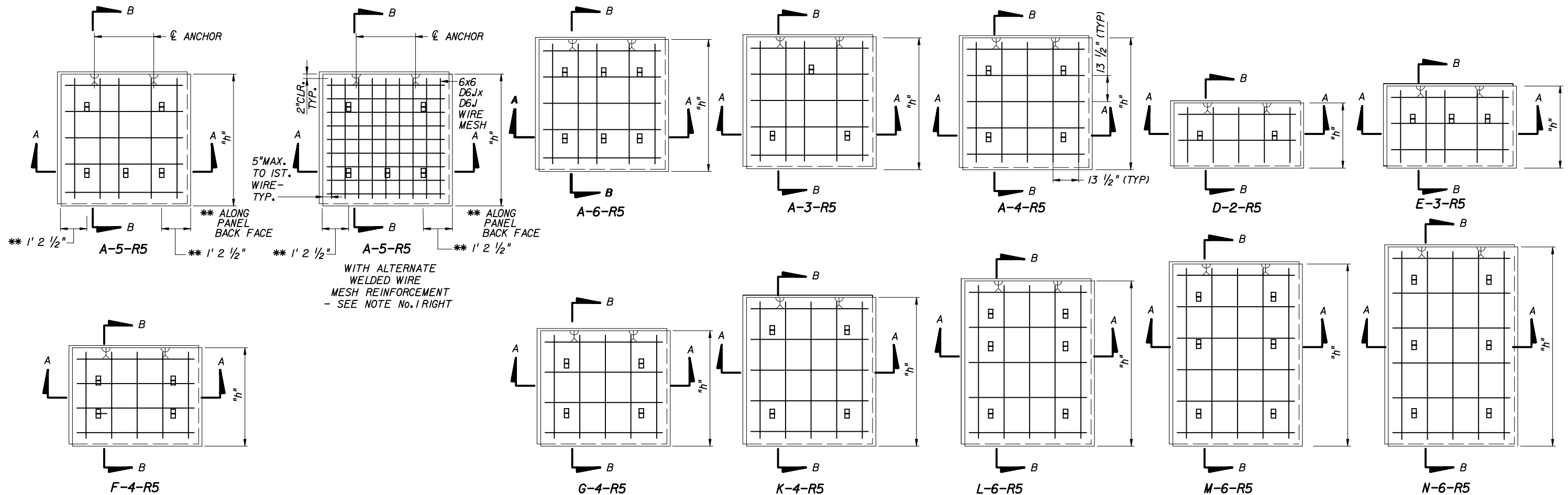
C.I.P. PARAPET DETAIL w/ HANDRAIL



DETAIL "A"

THIS SYSTEM SHALL BE USED IN SLIGHTLY OR MODERATELY AGGRESSIVE ENVIRONMENTS ONLY  
CRUCIFORM AND SQUARE PANELS

STATE OF FLORIDA DEPARTMENT OF TRANSPORTATION				
<b>RETAINING WALL SYSTEM REINFORCED EARTH COMPANY REINFORCED EARTH WALL</b>				
Names	Dates	Approved By <i>W. J. [Signature]</i>		
Designed By		State Structures Design Engineer		
Drawn By		Revision	Sheet No.	Index No.
Checked By		00	12 of 14	5015

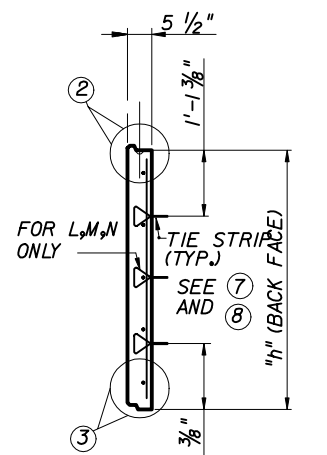


WITH ALTERNATE WELDED WIRE MESH REINFORCEMENT - SEE NOTE NO. 1 RIGHT

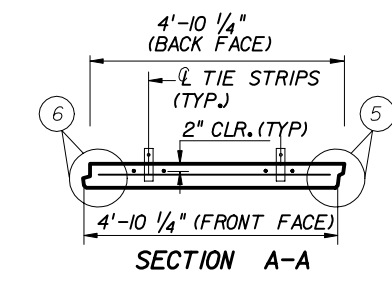
TYPICAL PANELS

NOTES:

1. REINFORCING STEEL TO BE A615, GRADE 60. DEFORMED WELDED WIRE MESH (ASTM A497) MAY BE SUBSTITUTED FOR REBARS. DEFORMED WELDED MESH REQUIREMENTS FOR PANEL "A" IS SHOWN IN THIS SHEET. MESH FOR OTHER PANEL TYPES SHALL BE DETERMINED BASED ON PANEL SHAPE MESH STYLE, AND MINIMUM EDGE CLEAR DISTANCES SHOWN ON THIS SHEET.
2. 1/2" x 1/2" CHAMFER SHALL BE PROVIDED ON ALL EXPOSED EDGES (FRONT FACE ONLY).
3. ALL PANEL TYPES AND OTHER RELATED ELEMENTS WILL BE DETAILED ON PANEL SHOP DRAWINGS.
4. ALL PANELS SHALL HAVE TWO 1 TON ANCHORS.
5. PANEL DESIGN THICKNESS IS 5 1/2" THICKNESS OF CONCRETE MUST INCREASE TO ACCOMMODATE ANY ARCHITECTURAL SURFACE FINISH THAT MAY BE SPECIFIED.
6. ACTUAL LOCATION OF REBARS WILL BE ADJUSTED TO ACCOMMODATE PANEL CASTING. MINIMUM 1 3/16" CLEARANCE IS REQUIRED BETWEEN REBARS & TIE-STRIPS.



SECTION B-B



SECTION A-A

PANEL TYPE	"h"
A	4'-10 1/4"
D	2'-4 3/4"
E	3'-0 1/4"
F	3'-7 1/2"
G	4'-3"
K	5'-5 3/4"
L	6'-1"
M	6'-8 1/2"
N	7'-4"

NOTE: CONCRETE COVER ON ALL REINFORCEMENT TO BE 2" MIN.

PANEL THICKNESS	REINFORCEMENT DESIGNATION	PANEL REINFORCEMENT A <sub>5</sub>	MAXIMUM ALLOWABLE HORIZONTAL STRESS AT FACING (KSF)
5 1/2" (MIN.)	R5	5-#3 VERTICAL 5-#3 HORIZONTAL	1.19
		ALTERNATE 6 x 6 D6J x D6J	
	R7	7-#3 VERTICAL 6-#3 HORIZONTAL	1.78
		ALTERNATE 6 x 6 D8.5 x D8.5	

STATE OF FLORIDA DEPARTMENT OF TRANSPORTATION

RETAINING WALL SYSTEM  
REINFORCED EARTH COMPANY  
REINFORCED EARTH WALL

Names	Dates	Approved By		
Designed By		 State Structures Design Engineer		
Drawn By				
Checked By				
		Revision	Sheet No.	Index No.
		00	13 of 14	5015

