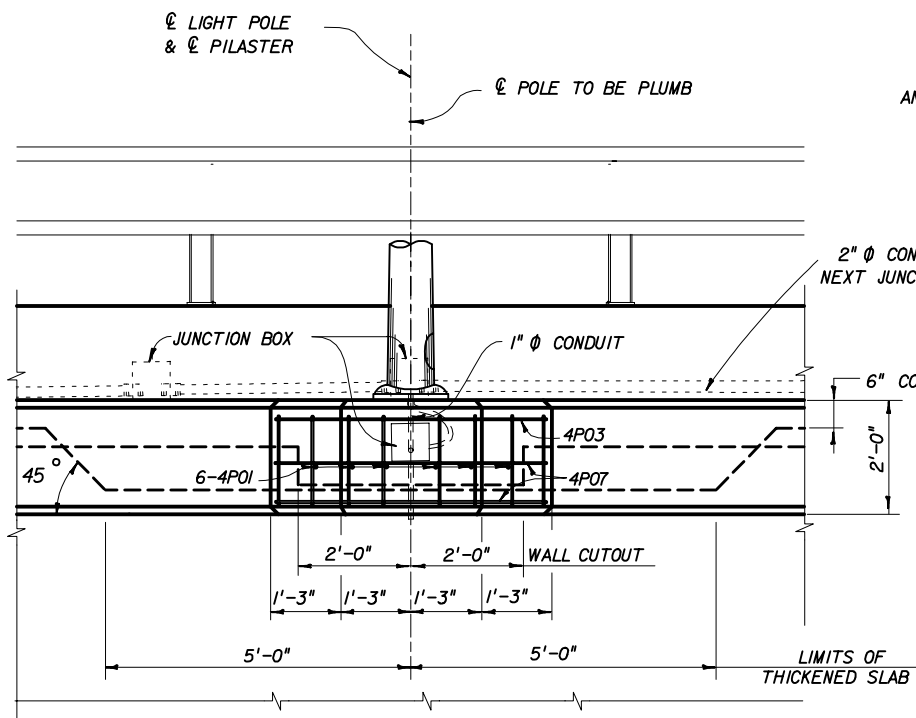


**PLAN**



**LIGHT PILASTER DETAIL**

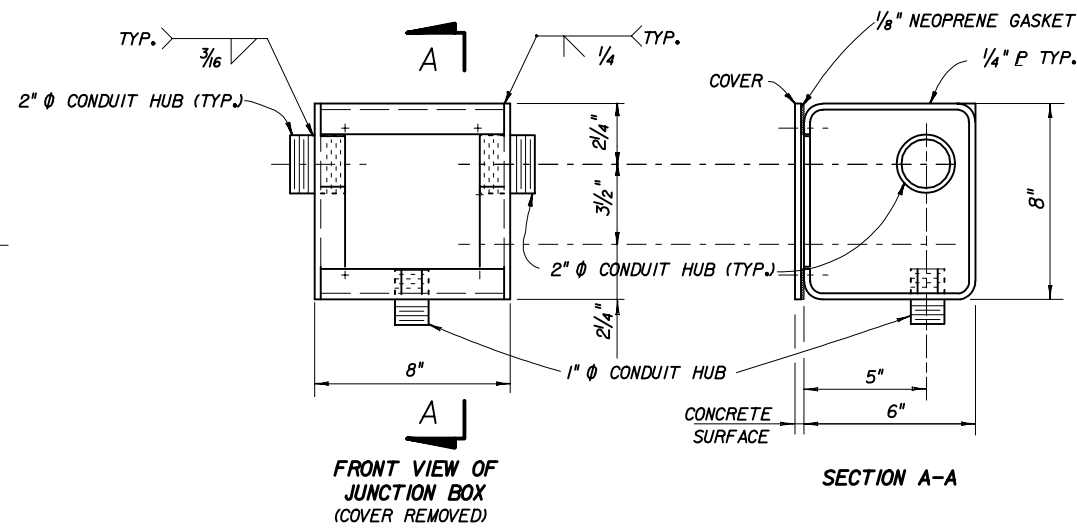
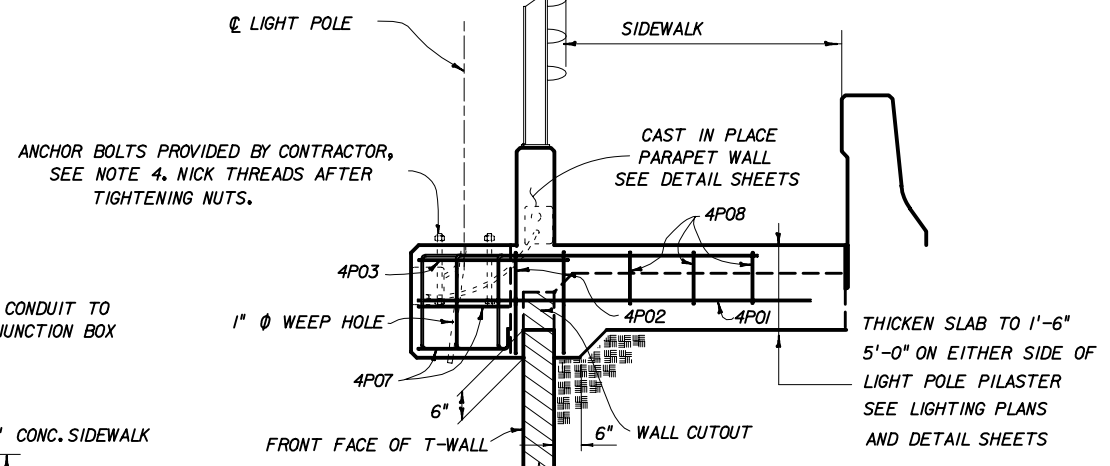
**NOTES**

- ADDITIONAL CONCRETE AND REINFORCING STEEL REQUIRED FOR THE CONSTRUCTION OF THE PILASTER SHALL MEET THE SAME REQUIREMENTS AS THAT OF THE PARAPET WALL.
- TOP OF PILASTER SHALL BE FINISHED TO A TRULY LEVEL AREA.
- LIGHT POLE PILASTER IS DESIGNED TO RESIST WORKING LOADS (IN ANY DIRECTION) FROM THE LIGHT POLE APPLIED AT THE TOP OF THE PILASTER AS FOLLOWS:
 

LONGITUDINAL MOMENT	=	30,000 FT. POUND
TRANSVERSE MOMENT	=	6,000 FT. POUND
LONGITUDINAL SHEAR	=	1,000 POUND
TRANSVERSE SHEAR	=	200 POUND
TORSION	=	3,000 FT. POUNDS
AXIAL	=	400 POUNDS

IF THE LIGHT POLE PROVIDED APPLIES LOADS THAT ARE IN EXCESS OF THOSE SHOWN ABOVE, THE CONTRACTOR SHALL REDESIGN THE PILASTER AND SUBMIT HIS DESIGN TO THE DEPARTMENT FOR REVIEW. THE CONTRACTOR'S REDESIGN SHALL BE PREPARED, SIGNED AND SEALED BY A PROFESSIONAL ENGINEER REGISTERED IN THE STATE OF FLORIDA, AND QUALIFIED TO PERFORM THE WORK.
- THE CONTRACTOR IS RESPONSIBLE FOR PROVIDING ANCHOR BOLTS THAT EFFECTIVELY TRANSMIT THE LIGHT POLE LOADS TO THE PILASTER AND THAT FIT THE REINFORCING CAGE. CALCULATIONS SIGNED AND SEALED BY A PROFESSIONAL ENGINEER REGISTERED IN THE STATE OF FLORIDA SHALL BE SUBMITTED BY THE CONTRACTOR TO THE DEPARTMENT FOR REVIEW AND APPROVAL SHOWING THAT THESE REQUIREMENTS HAVE BEEN MET PRIOR TO CONSTRUCTION.

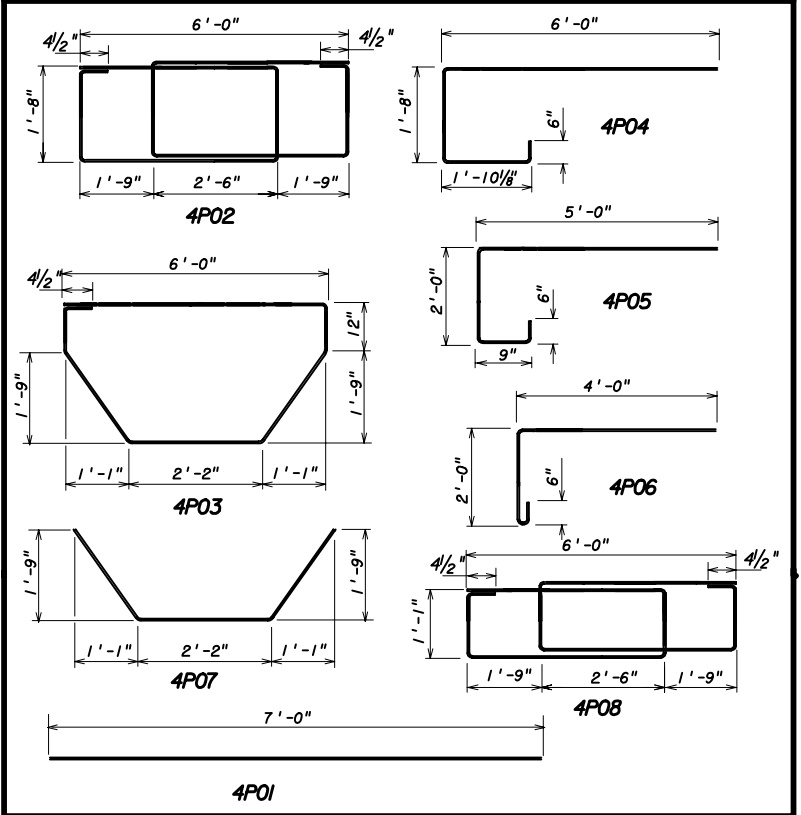
- STEEL FOR JUNCTION BOXES SHALL CONFORM WITH ASTM-A36. THE BOXES SHALL BE HOT DIP GALVANIZED AFTER FABRICATION. IN LIEU OF STEEL BOXES THE CONTRACTOR MAY SUBMIT FOR APPROVAL MOLDED P.V.C. BOXES (SCHEDULE 80).
- ALL CONDUITS SHALL BE RIGID GALVANIZED STEEL OR SCHEDULE 80 P.V.C.
- THE COST OF ANCHOR BOLTS SHALL BE INCLUDED IN THE BID PRICE FOR LIGHT POLES.
- PAYMENT: THE COST OF ALL LABOR, CONCRETE AND REINFORCING STEEL REQUIRED FOR THE CONSTRUCTION OF THE PILASTERS AND ALL CONDUITS. EXPANSION COUPLINGS, JUNCTION BOXES AND MISCELLANEOUS HARDWARE REQUIRED FOR COMPLETION OF THE ELECTRICAL INSTALLATION WITHIN THE LIMITS SHOWN ON THIS SHEET, SHALL BE INCLUDED IN THE CONTRACTOR'S BID PRICE FOR THE MSE WALLS.



**FRONT VIEW OF JUNCTION BOX (COVER REMOVED)**

**SECTION A-A**

**BAR BENDING DIAGRAMS**

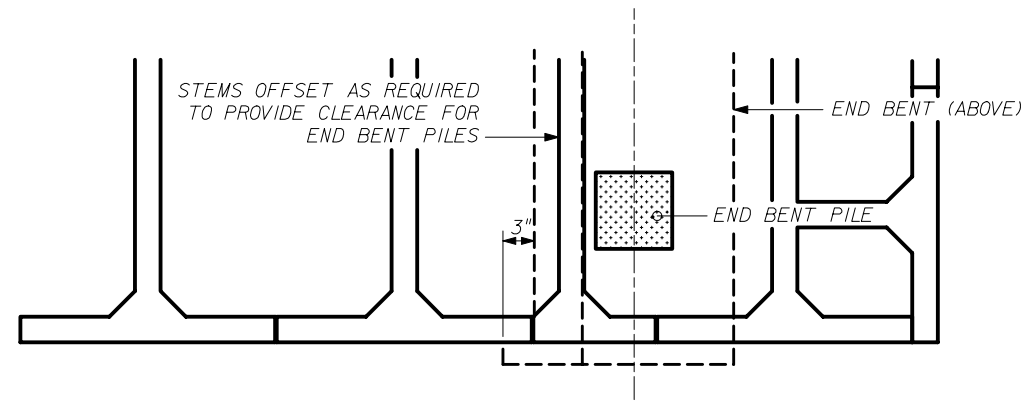


BILL OF REINFORCING STEEL			
MARK	SIZE	NO. REQ'D	LENGTH
4P01	4	6	7'-0"
4P02	4	2	24'-5"
4P03	4	1	14'-9"
4P04	4	4	9'-8"
4P05	4	2	7'-11"
4P06	4	2	6'-2"
4P07	4	2	6'-4"
4P08	4	3	22'-1"

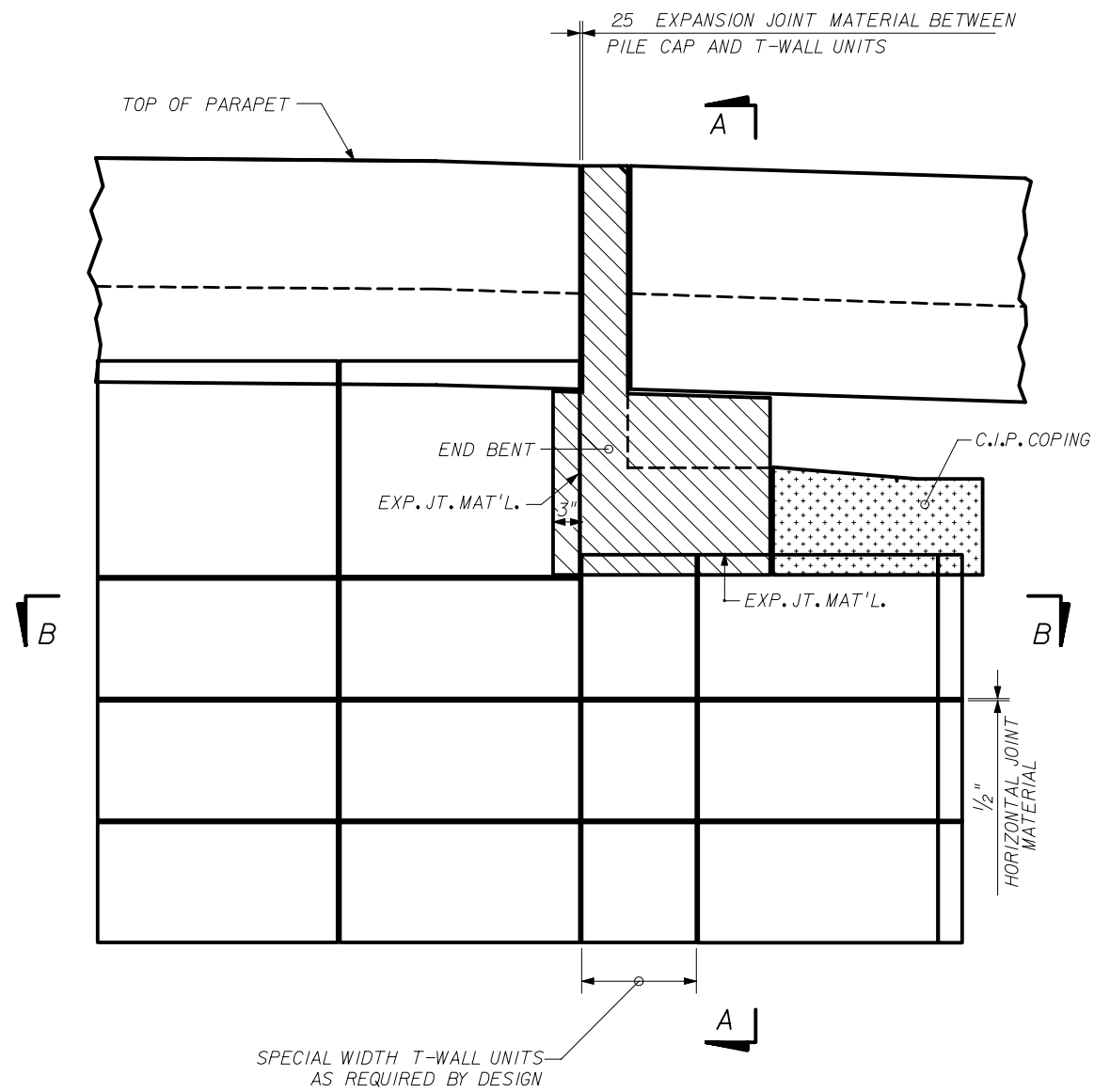
STATE OF FLORIDA DEPARTMENT OF TRANSPORTATION

**RETAINING WALL SYSTEM**  
**THE NEEL COMPANY T-WALL**  
**(3" COVER)**

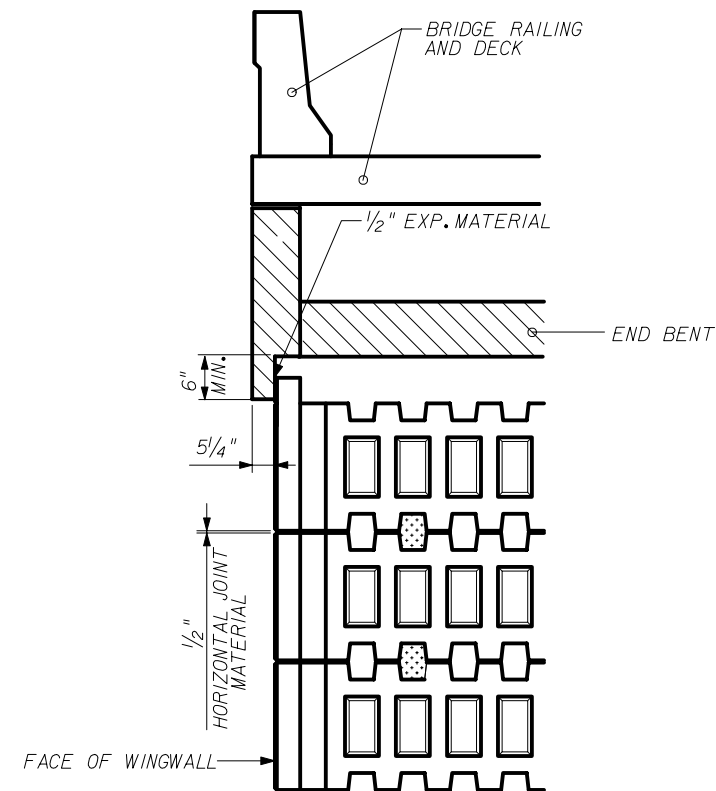
Names	Dates	Approved By		
Designed By	JMC	10/01/98	 State Structures Design Engineer	
Drawn By	CAA	10/01/98		
Checked By	JMC	10/01/98		
Revision	04	11 of 20		
Index No.	5010			



**SECTION B-B**  
STEM / END BENT PILE INTERFACE



**PART ELEVATION SHOWING**  
WINGWALL / END BENT INTERFACE



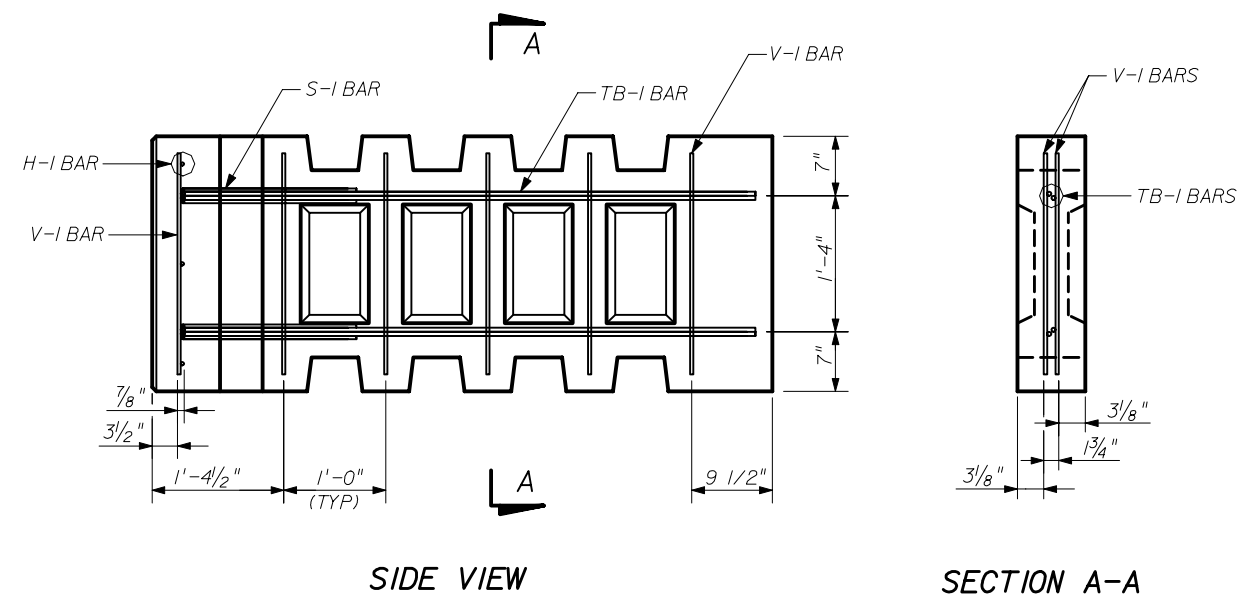
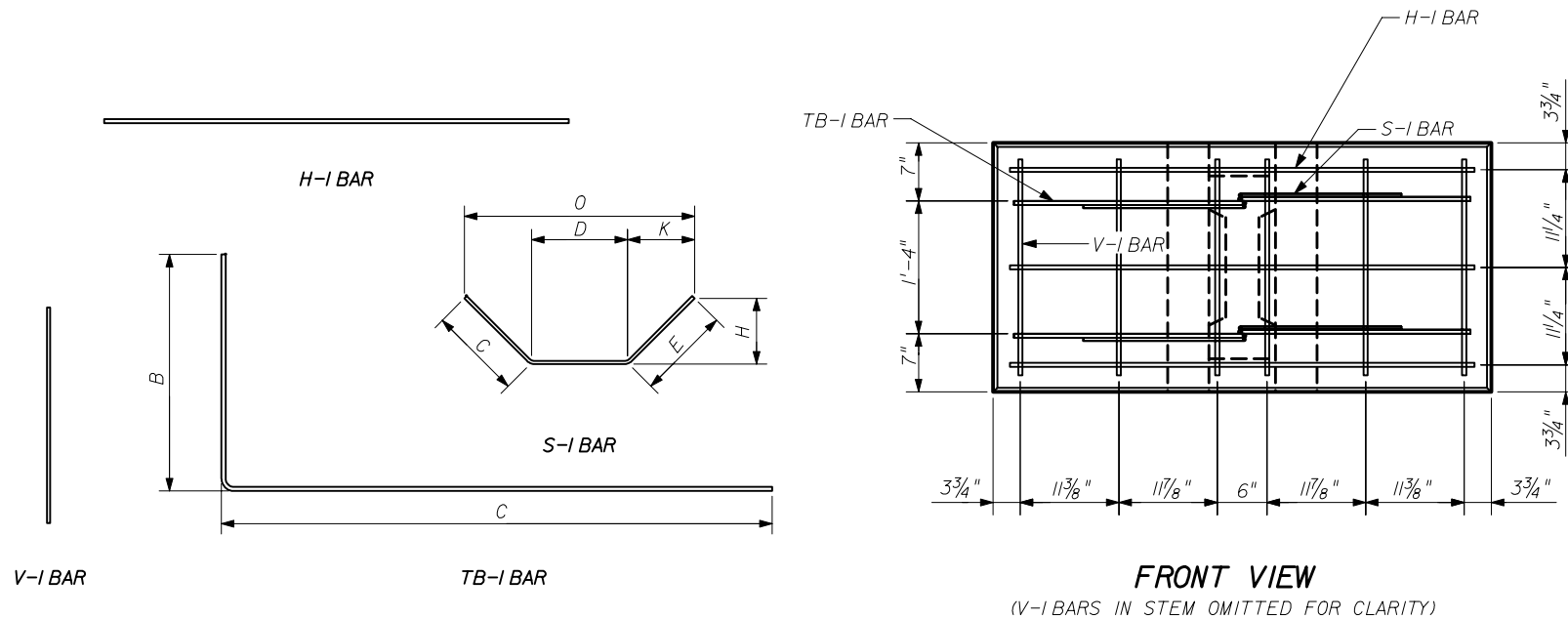
**SECTION A-A**  
SECTION THRU PILE CAP

**THE NEEL COMPANY**  
8328-D TRAFORD LANE  
SPRINGFIELD, VIRGINIA 22152  
PH: (703) 913-7858  
FX: (703) 913-7859

**OLDCASTLE PRECAST, INC**  
5995 SOUTEL DR.  
JACKSONVILLE, FL 32219  
PH: (904) 768-7081  
FX: (904) 768-8428

STATE OF FLORIDA DEPARTMENT OF TRANSPORTATION  
**RETAINING WALL SYSTEM**  
**THE NEEL COMPANY T-WALL**  
**(3" COVER)**

Names	Dates	Approved By <i>W. V. [Signature]</i>		
Designed By	JMC	10-98	State Structures Design Engineer	
Drawn By	CCA	10-98	Revision	Sheet No.
Checked By	JMC	10-98	04	12 of 20
				Index No. 5010



**FRONT VIEW**  
(V-I BARS IN STEM OMITTED FOR CLARITY)

**SIDE VIEW**

**SECTION A-A**

REBAR SCHEDULE - 2.5 x 5.0 x 04 STD UNIT

MARK	QNTY	SIZE	TYPE	LGTH	B	C	D	E	H	K	O	ANGLE	REMARKS
H-I	3	4	-	4'-6"								-	
V-I	12	3	-	2'-0"								-	
S-I	4	3	3	2'-9 7/8"		11 1/4"	11 1/4"	11 1/4"	8"	8"	2'-3 3/4"	45	
TB-I	4	4	17	5'-8 1/2"	2'-3 1/2"	3'-6 1/2"						90	

REBAR SCHEDULE - 2.5 x 5.0 x 06 STD UNIT

MARK	QNTY	SIZE	TYPE	LGTH	B	C	D	E	H	K	O	ANGLE	REMARKS
H-I	3	4	-	4'-6"								-	
V-I	16	3	-	2'-0"								-	
S-I	4	3	3	2'-9 7/8"		11 1/4"	11 1/4"	11 1/4"	8"	8"	2'-3 3/4"	45	
TB-I	4	4	17	7'-8 1/2"	2'-3 1/2"	5'-6 1/2"						90	

REBAR SCHEDULE - 2.5 x 5.0 x 08 STD UNIT

MARK	QNTY	SIZE	TYPE	LGTH	B	C	D	E	H	K	O	ANGLE	REMARKS
H-I	3	4	-	4'-6"								-	
V-I	20	3	-	2'-0"								-	
S-I	4	3	3	2'-9 7/8"		11 1/4"	11 1/4"	11 1/4"	8"	8"	2'-3 3/4"	45	
TB-I	4	4	17	9'-8 1/2"	2'-3 1/2"	7'-6 1/2"						90	

REBAR SCHEDULE - 2.5 x 5.0 x 10 STD UNIT

MARK	QNTY	SIZE	TYPE	LGTH	B	C	D	E	H	K	O	ANGLE	REMARKS
H-I	3	4	-	4'-6"								-	
V-I	24	3	-	2'-0"								-	
S-I	4	3	3	2'-9 7/8"		11 1/4"	11 1/4"	11 1/4"	8"	8"	2'-3 3/4"	45	
TB-I	4	4	17	11'-8 1/2"	2'-3 1/2"	9'-6 1/2"						90	

REBAR SCHEDULE - 2.5 x 5.0 x 12 STD UNIT

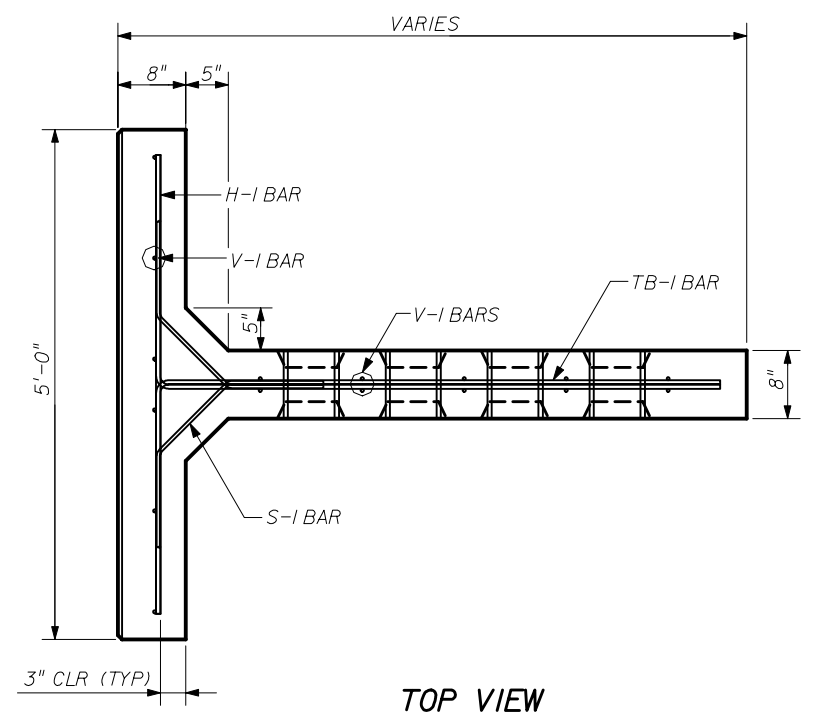
MARK	QNTY	SIZE	TYPE	LGTH	B	C	D	E	H	K	O	ANGLE	REMARKS
H-I	3	4	-	4'-6"								-	
V-I	26	3	-	2'-0"								-	
S-I	4	3	3	2'-9 7/8"		11 1/4"	11 1/4"	11 1/4"	8"	8"	2'-3 3/4"	45	
TB-I	4	4	17	13'-8 1/2"	2'-3 1/2"	11'-6 1/2"						90	

REBAR SCHEDULE - 2.5 x 5.0 x 14 STD UNIT

MARK	QNTY	SIZE	TYPE	LGTH	B	C	D	E	H	K	O	ANGLE	REMARKS
H-I	3	4	-	4'-6"								-	
V-I	32	3	-	2'-0"								-	
S-I	4	3	3	2'-9 7/8"		11 1/4"	11 1/4"	11 1/4"	8"	8"	2'-3 3/4"	45	
TB-I	4	4	17	15'-8 1/2"	2'-3 1/2"	13'-6 1/2"						90	

REBAR SCHEDULE - 2.5 x 5.0 x 16 STD UNIT

MARK	QNTY	SIZE	TYPE	LGTH	B	C	D	E	H	K	O	ANGLE	REMARKS
H-I	3	4	-	4'-6"								-	
V-I	36	3	-	2'-0"								-	
S-I	4	3	3	2'-9 7/8"		11 1/4"	11 1/4"	11 1/4"	8"	8"	2'-3 3/4"	45	
TB-I	4	4	17	17'-8 1/2"	2'-3 1/2"	15'-6 1/2"						90	



**TOP VIEW**  
**REINFORCING STEEL - STANDARD UNITS**

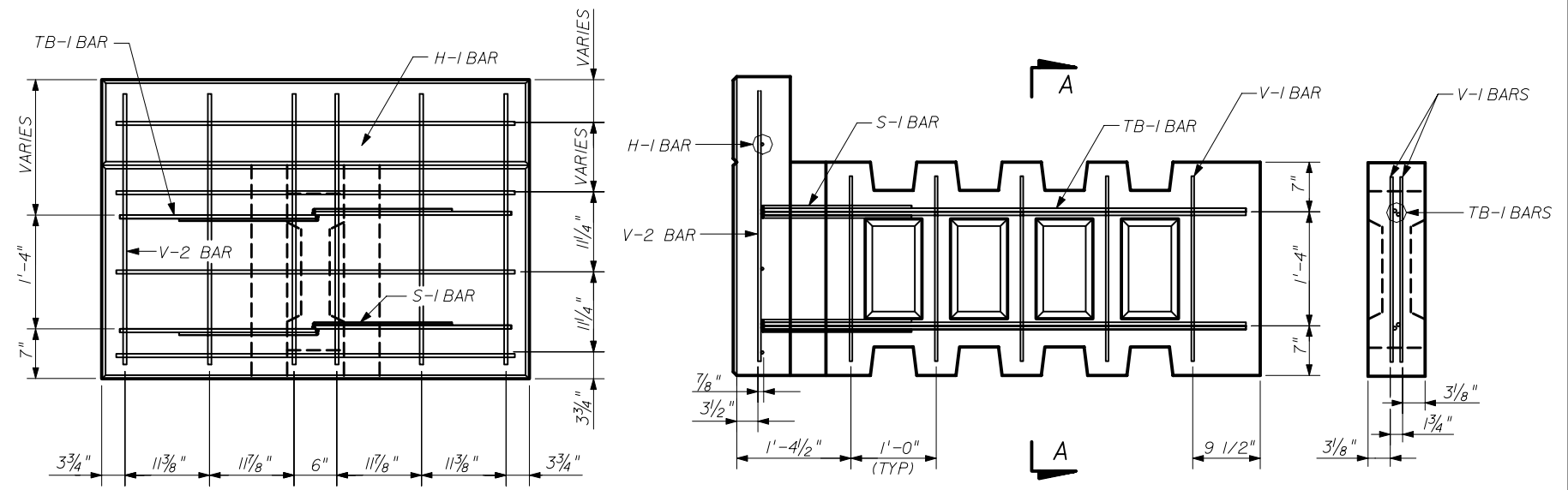
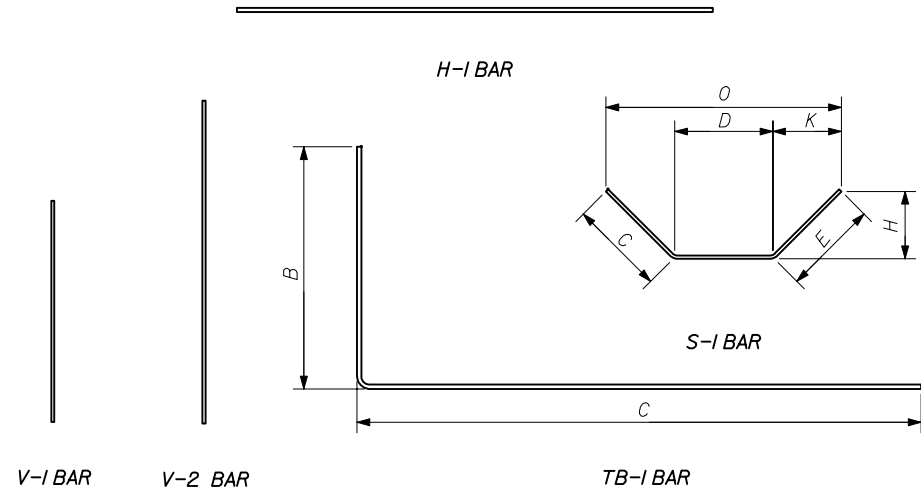
NOTE: ALL STEEL REINFORCING BARS SHALL HAVE 3" MIN. CONCRETE COVER



**THE NEEL COMPANY**  
8328-D TRAFORD LANE  
SPRINGFIELD, VIRGINIA 22152  
PH: (703) 913-7858  
FX: (703) 913-7859

**OLDCASTLE PRECAST, INC**  
5995 SOUTHEL DR.  
JACKSONVILLE, FL 32219  
PH: (904) 768-7081  
FX: (904) 768-8428

STATE OF FLORIDA DEPARTMENT OF TRANSPORTATION				
RETAINING WALL SYSTEM THE NEEL COMPANY T-WALL (3" COVER)				
Names	Dates	Approved By		
Designed By	JMC	10/01/98	 State Structures Design Engineer	
Drawn By	CAA	10/01/98		
Checked By	JMC	10/01/98	Revision	Sheet No.
			04	13 of 20
				Index No.
				5010



**FRONT VIEW**  
(V-1 BARS IN STEM OMITTED FOR CLARITY)

**SIDE VIEW**

**SECTION A-A**

REBAR SCHEDULE - 3.0 x 5.0 x 04 TOP UNIT													
MARK	QNTY	SIZE	TYPE	LGTH	B	C	D	E	H	K	O	ANGLE	REMARKS
H-1	4	4	-	4'-6"								-	
V-1	6	3	-	2'-0"								-	
V-2	6	5	-	2'-6"								-	
S-1	4	3	3	2'-9 7/8"		11 1/4"	11 1/4"	11 1/4"	8"	8"	2'-3 3/4"	45	
TB-1	4	4	17	5'-8 1/2"	2'-3 1/2"	3'-6 1/2"						90	

REBAR SCHEDULE - 3.0 x 5.0 x 06 TOP UNIT													
MARK	QNTY	SIZE	TYPE	LGTH	B	C	D	E	H	K	O	ANGLE	REMARKS
H-1	4	4	-	4'-6"								-	
V-1	10	3	-	2'-0"								-	
V-2	6	5	-	2'-6"								-	
S-1	4	3	3	2'-9 7/8"		11 1/4"	11 1/4"	11 1/4"	8"	8"	2'-3 3/4"	45	
TB-1	4	4	17	7'-8 1/2"	2'-3 1/2"	5'-6 1/2"						90	

REBAR SCHEDULE - 3.5 x 5.0 x 04 TOP UNIT													
MARK	QNTY	SIZE	TYPE	LGTH	B	C	D	E	H	K	O	ANGLE	REMARKS
H-1	5	4	-	4'-6"								-	
V-1	6	3	-	2'-0"								-	
V-2	6	5	-	3'-0"								-	
S-1	4	3	3	2'-9 7/8"		11 1/4"	11 1/4"	11 1/4"	8"	8"	2'-3 3/4"	45	
TB-1	4	4	17	5'-8 1/2"	2'-3 1/2"	3'-6 1/2"						90	

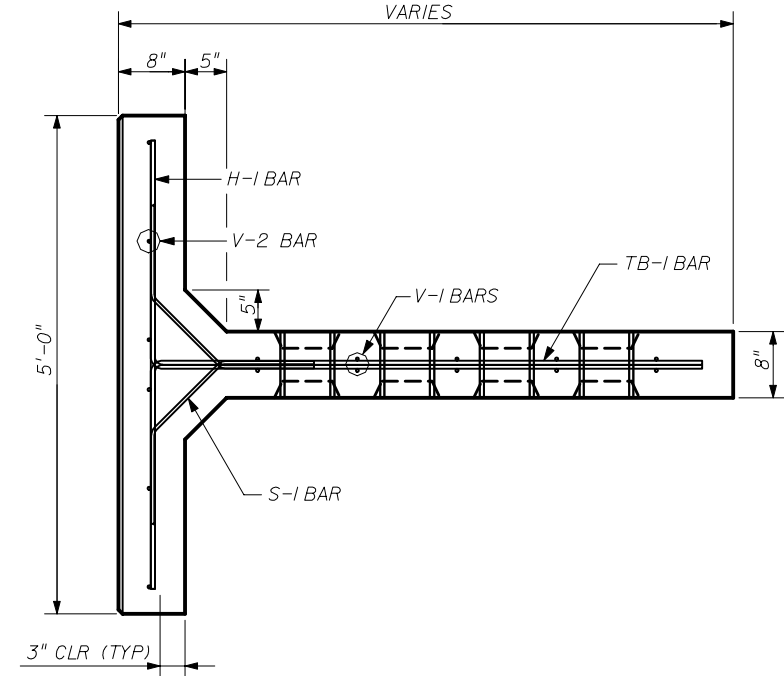
REBAR SCHEDULE - 3.5 x 5.0 x 06 TOP UNIT													
MARK	QNTY	SIZE	TYPE	LGTH	B	C	D	E	H	K	O	ANGLE	REMARKS
H-1	5	4	-	4'-6"								-	
V-1	10	3	-	2'-0"								-	
V-2	6	5	-	3'-0"								-	
S-1	4	3	3	2'-9 7/8"		11 1/4"	11 1/4"	11 1/4"	8"	8"	2'-3 3/4"	45	
TB-1	4	4	17	7'-8 1/2"	2'-3 1/2"	5'-6 1/2"						90	

REBAR SCHEDULE - 4.0 x 5.0 x 04 TOP UNIT													
MARK	QNTY	SIZE	TYPE	LGTH	B	C	D	E	H	K	O	ANGLE	REMARKS
H-1	5	4	-	4'-6"								-	
V-1	6	3	-	2'-0"								-	
V-2	6	5	-	3'-6"								-	
S-1	4	3	3	2'-9 7/8"		11 1/4"	11 1/4"	11 1/4"	8"	8"	2'-3 3/4"	45	
TB-1	4	4	17	5'-8 1/2"	2'-3 1/2"	3'-6 1/2"						90	

REBAR SCHEDULE - 4.0 x 5.0 x 06 TOP UNIT													
MARK	QNTY	SIZE	TYPE	LGTH	B	C	D	E	H	K	O	ANGLE	REMARKS
H-1	5	4	-	4'-6"								-	
V-1	10	3	-	2'-0"								-	
V-2	6	5	-	3'-6"								-	
S-1	4	3	3	2'-9 7/8"		11 1/4"	11 1/4"	11 1/4"	8"	8"	2'-3 3/4"	45	
TB-1	4	4	17	7'-8 1/2"	2'-3 1/2"	5'-6 1/2"						90	

REBAR SCHEDULE - 4.5 x 5.0 x 06 TOP UNIT													
MARK	QNTY	SIZE	TYPE	LGTH	B	C	D	E	H	K	O	ANGLE	REMARKS
H-1	6	4	-	4'-6"								-	
V-1	6	3	-	2'-0"								-	
V-2	6	5	-	4'-0"								-	
S-1	4	3	3	2'-9 7/8"		11 1/4"	11 1/4"	11 1/4"	8"	8"	2'-3 3/4"	45	
TB-1	4	4	17	7'-8 1/2"	2'-3 1/2"	5'-6 1/2"						90	

REBAR SCHEDULE - 5.0 x 5.0 x 06 TOP UNIT													
MARK	QNTY	SIZE	TYPE	LGTH	B	C	D	E	H	K	O	ANGLE	REMARKS
H-1	6	4	-	4'-6"								-	
V-1	10	3	-	2'-0"								-	
V-2	6	5	-	4'-6"								-	
S-1	4	3	3	2'-9 7/8"		11 1/4"	11 1/4"	11 1/4"	8"	8"	2'-3 3/4"	45	
TB-1	4	4	17	7'-8 1/2"	2'-3 1/2"	5'-6 1/2"						90	



**TOP VIEW**

**REINFORCING STEEL - TOP UNITS (I)**

NOTE: ALL STEEL REINFORCING BARS SHALL HAVE 3" MIN. CONCRETE COVER



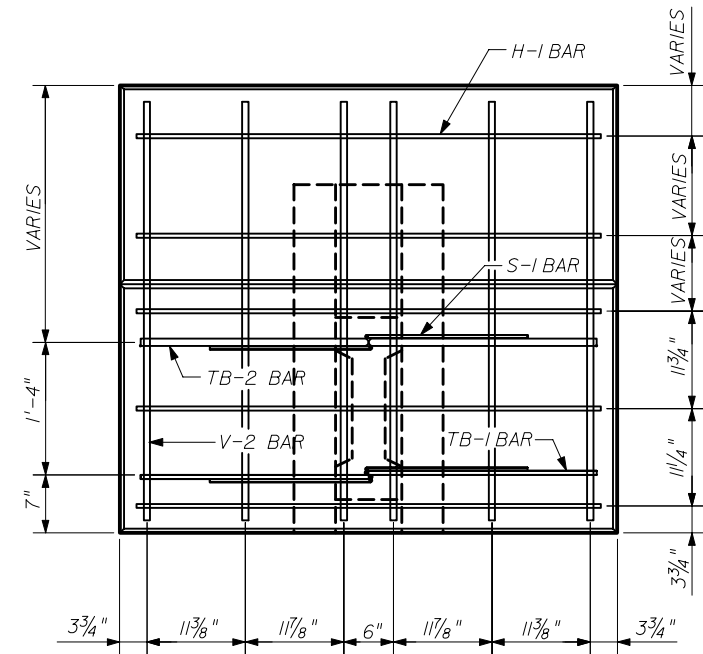
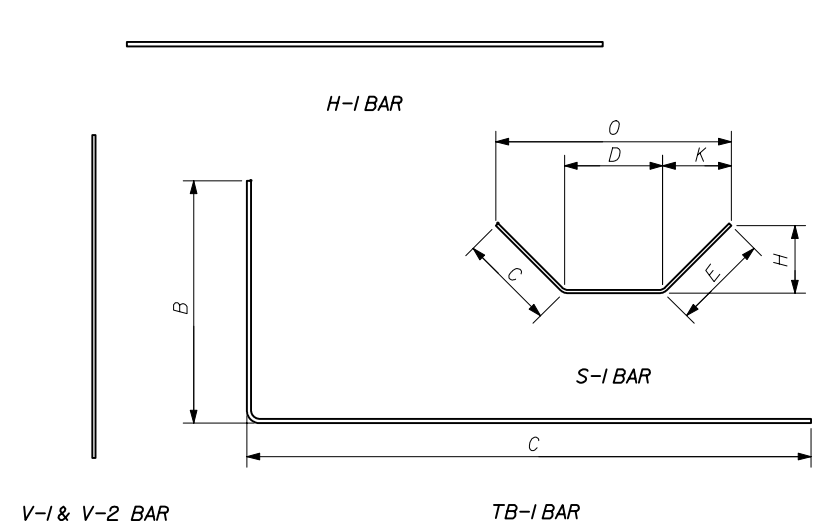
**THE NEEL COMPANY**  
8328-D TRAFORD LANE  
SPRINGFIELD, VIRGINIA 22152  
PH: (703) 913-7858  
FX: (703) 913-7859

**OLDCASTLE PRECAST, INC**  
5995 SOUTHEL DR.  
JACKSONVILLE, FL 32219  
PH: (904) 768-7081  
FX: (904) 768-8428

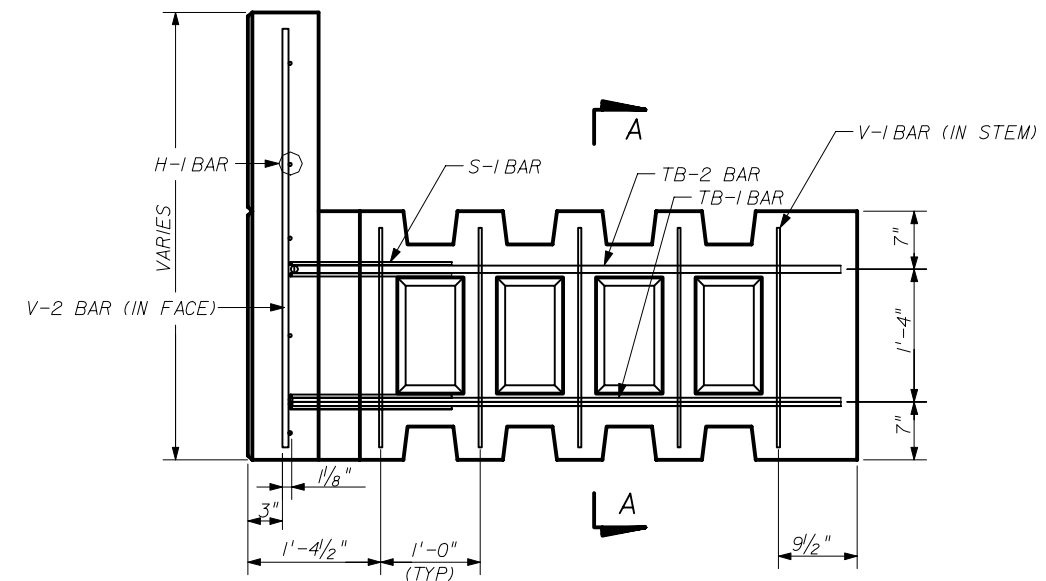
STATE OF FLORIDA DEPARTMENT OF TRANSPORTATION

**RETAINING WALL SYSTEM  
THE NEEL COMPANY T-WALL  
(3" COVER)**

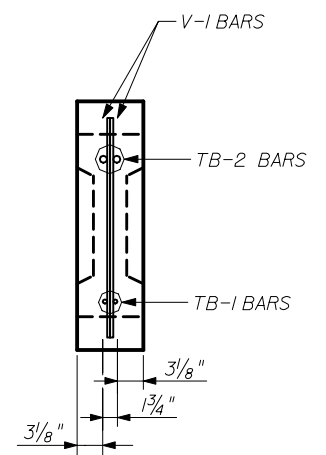
Names	Dates	Approved By		
Designed By	JMC	10/01/98	 State Structures Design Engineer	
Drawn By	CAA	10/01/98		
Checked By	JMC	10/01/98		
Revision	04	14 of 20		
Index No.	5010			



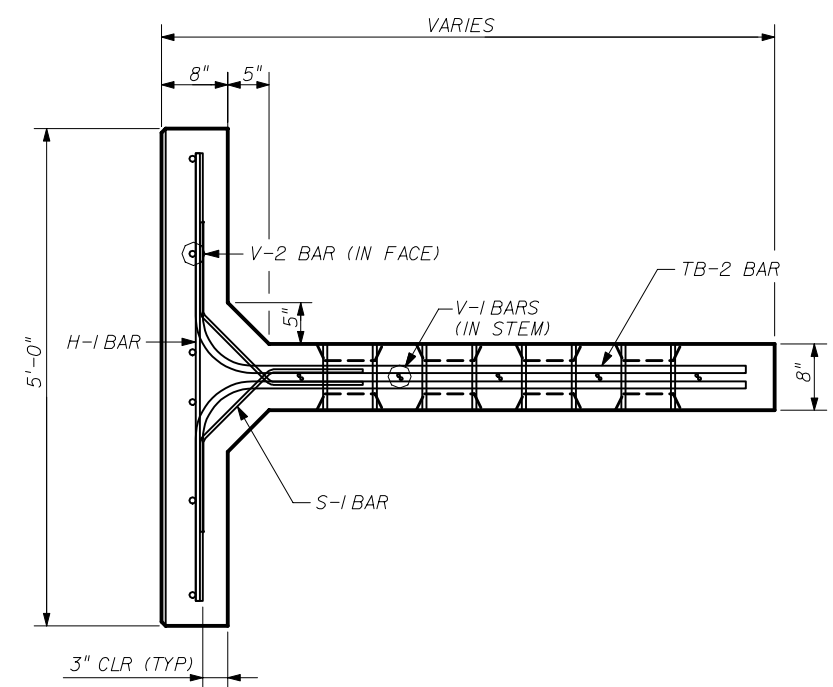
**FRONT VIEW**  
(V-1 BARS IN STEM OMITTED FOR CLARITY)



**SIDE VIEW**



**SECTION A-A**



**TOP VIEW**  
**REINFORCING STEEL -TOP UNITS (II)**

REBAR SCHEDULE - 5.5 x 5.0 x 08 TOP UNIT

MARK	QNTY	SIZE	TYPE	LGTH	B	C	D	E	H	K	O	ANGLE	REMARKS
H-1	6	4	-	4'-6"								-	
V-1	14	3	-	2'-0"								-	
V-2	6	6	-	5'-0"								-	
S-1	4	3	3	2'-9"		9"	1'-3"	9"	5 3/8"	5 3/8"	2'-1 3/4"	45	
TB-1	4	6	17	9'-8 1/2"	2'-3 1/2"	7'-6 1/2"						90	

REBAR SCHEDULE - 6.0 x 5.0 x 08 TOP UNIT

MARK	QNTY	SIZE	TYPE	LGTH	B	C	D	E	H	K	O	ANGLE	REMARKS
H-1	7	4	-	4'-6"								-	
V-1	14	3	-	2'-0"								-	
V-2	6	6	-	5'-6"								-	
S-1	4	3	3	2'-9"		9"	1'-3"	9"	5 3/8"	5 3/8"	2'-1 3/4"	45	
TB-1	4	6	17	9'-8 1/2"	2'-3 1/2"	7'-6 1/2"						90	

REBAR SCHEDULE - 6.5 x 5.0 x 08 TOP UNIT

MARK	QNTY	SIZE	TYPE	LGTH	B	C	D	E	H	K	O	ANGLE	REMARKS
H-1	7	4	-	4'-6"								-	
V-1	14	3	-	2'-0"								-	
V-2	6	6	-	6'-0"								-	
S-1	4	3	3	2'-9"		9"	1'-3"	9"	5 3/8"	5 3/8"	2'-1 3/4"	45	
TB-1	4	6	17	9'-8 1/2"	2'-3 1/2"	7'-6 1/2"						90	

REBAR SCHEDULE - 7.0 x 5.0 x 08 TOP UNIT

MARK	QNTY	SIZE	TYPE	LGTH	B	C	D	E	H	K	O	ANGLE	REMARKS
H-1	8	4	-	4'-6"								-	
V-1	14	3	-	2'-0"								-	
V-2	6	6	-	6'-6"								-	
S-1	4	3	3	2'-9"		9"	1'-3"	9"	5 3/8"	5 3/8"	2'-1 3/4"	45	
TB-1	4	6	17	9'-8 1/2"	2'-3 1/2"	7'-6 1/2"						90	

THESE UNITS WILL ONLY BE USED BY APPROVAL OF THE F.D.O.T. STRUCTURES DESIGN OFFICE ON A PROJECT BY PROJECT BASIS.

NOTE: ALL STEEL REINFORCING BARS SHALL HAVE 3" MIN. CONCRETE COVER

**THE NEEL COMPANY**  
8328-D TRAFORD LANE  
SPRINGFIELD, VIRGINIA 22152  
PH: (703) 913-7858  
FX: (703) 913-7859

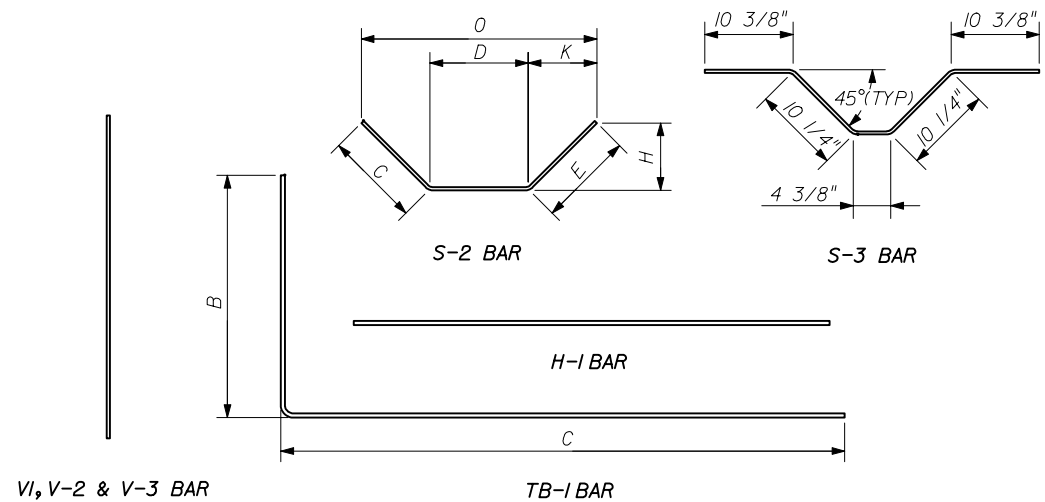
**OLDCASTLE PRECAST, INC**  
5995 SOUTTEL DR.  
JACKSONVILLE, FL 32219  
PH: (904) 768-7081  
FX: (904) 768-8428

STATE OF FLORIDA DEPARTMENT OF TRANSPORTATION

**RETAINING WALL SYSTEM**  
**THE NEEL COMPANY T-WALL**  
**(3" COVER)**

Names	Dates	Approved By
Designed By: JMC	10/01/98	[Signature]
Drawn By: CAA	10/01/98	
Checked By: JMC	10/01/98	

Revision	Sheet No.	Index No.
04	15 of 20	5010



V-1, V-2 & V-3 BAR

TB-1 BAR

REBAR SCHEDULE - 7.5 x 5.0 x 10 TOP UNIT													
MARK	QNTY	SIZE	TYPE	LGTH	B	C	D	E	H	K	O	ANGLE	REMARKS
H-1	8	4	-	4'-6"								-	
V-1	18	3	-	2'-0"								-	
V-2	6	6	-	7'-0"								-	
V-3	4	6	-	6'-0"								-	
S-2	4	3	3	2'-10"		10 3/8"	1'-2 3/8"	10 3/8"	7 1/2"	7 1/2"	2'-5"	45	
S-3	8	3	3	3'-3 3/8"								-	SEE BENDING DTL
TB-1	4	7	17	11'-7 1/8"	2'-2 1/4"	9'-6 7/8"						90	

REBAR SCHEDULE - 8.0 x 5.0 x 10 TOP UNIT													
MARK	QNTY	SIZE	TYPE	LGTH	B	C	D	E	H	K	O	ANGLE	REMARKS
H-1	8	4	-	4'-6"								-	
V-1	18	3	-	2'-0"								-	
V-2	6	6	-	7'-0"								-	
V-3	4	6	-	6'-6"								-	
S-2	4	3	3	2'-10"		10 3/8"	1'-2 3/8"	10 3/8"	7 1/2"	7 1/2"	2'-5"	45	
S-3	9	3	3	3'-3 3/8"								-	SEE BENDING DTL
TB-1	4	7	17	11'-7 1/8"	2'-2 1/4"	9'-6 7/8"						90	

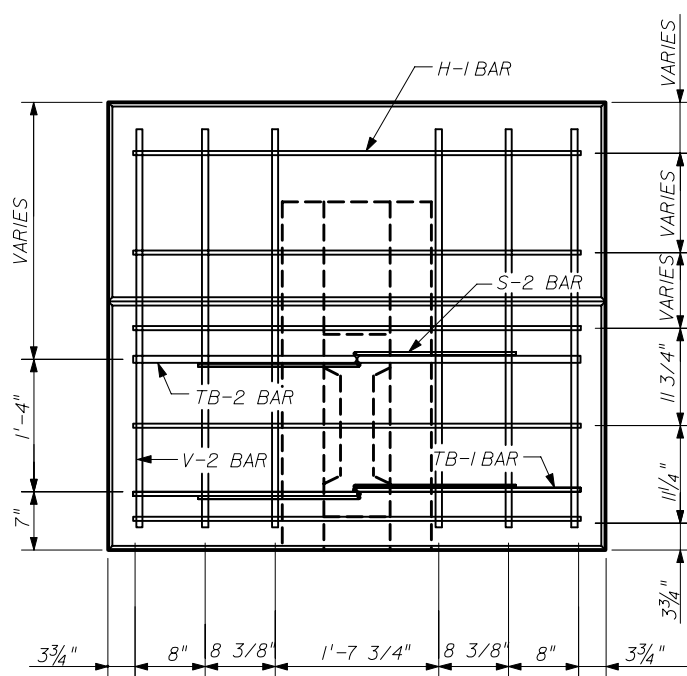
REBAR SCHEDULE - 8.5 x 5.0 x 10 TOP UNIT													
MARK	QNTY	SIZE	TYPE	LGTH	B	C	D	E	H	K	O	ANGLE	REMARKS
H-1	8	4	-	4'-6"								-	
V-1	18	3	-	2'-0"								-	
V-2	6	6	-	7'-0"								-	
V-3	4	6	-	7'-0"								-	
S-2	4	3	3	2'-10"		10 3/8"	1'-2 3/8"	10 3/8"	7 1/2"	7 1/2"	2'-5"	45	
S-3	10	3	3	3'-3 3/8"								-	SEE BENDING DTL
TB-1	4	7	17	11'-7 1/8"	2'-2 1/4"	9'-6 7/8"						90	

REBAR SCHEDULE - 9.0 x 5.0 x 12 TOP UNIT													
MARK	QNTY	SIZE	TYPE	LGTH	B	C	D	E	H	K	O	ANGLE	REMARKS
H-1	8	4	-	4'-6"								-	
V-1	22	3	-	2'-0"								-	
V-2	6	6	-	7'-0"								-	
V-3	4	6	-	7'-6"								-	
S-2	4	3	3	2'-10"		10 3/8"	1'-2 3/8"	10 3/8"	7 1/2"	7 1/2"	2'-5"	45	
S-3	11	3	3	3'-3 3/8"								-	SEE BENDING DTL
TB-1	4	7	17	13'-7 1/8"	2'-2 1/4"	11'-6 7/8"						90	

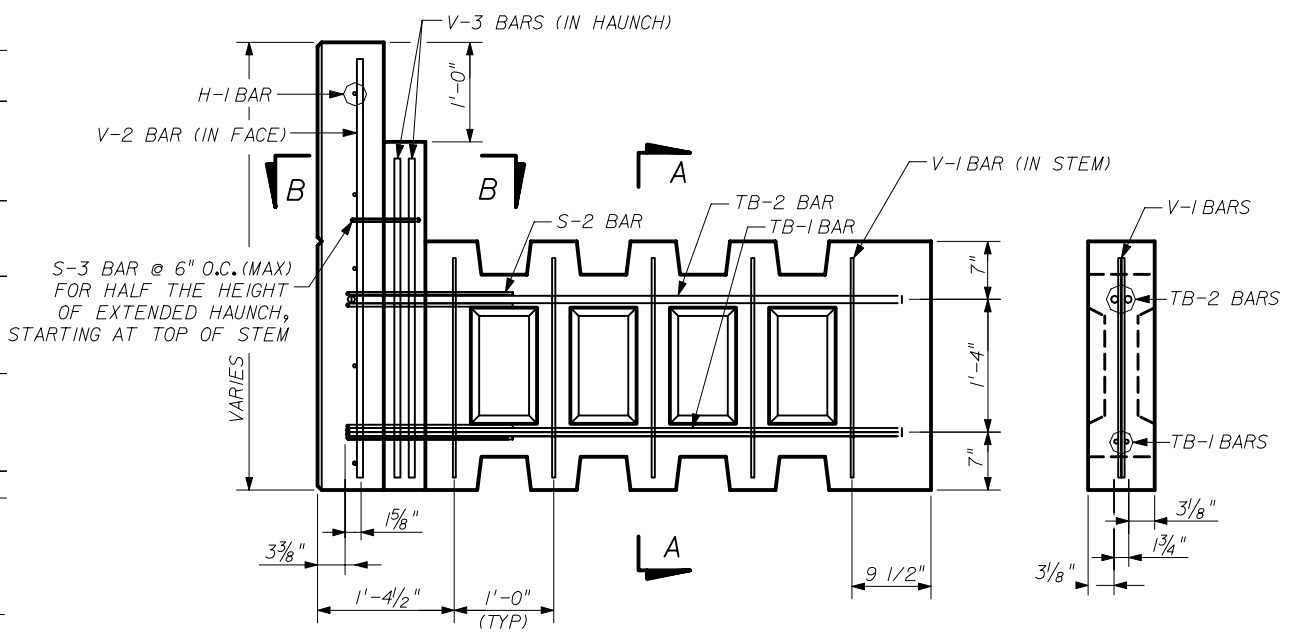
REBAR SCHEDULE - 9.5 x 5.0 x 12 TOP UNIT													
MARK	QNTY	SIZE	TYPE	LGTH	B	C	D	E	H	K	O	ANGLE	REMARKS
H-1	8	4	-	4'-6"								-	
V-1	22	3	-	2'-0"								-	
V-2	6	6	-	8'-0"								-	
V-3	4	6	-	8'-0"								-	
S-2	4	3	3	2'-10"		10 3/8"	1'-2 3/8"	10 3/8"	7 1/2"	7 1/2"	2'-5"	45	
S-3	12	3	3	3'-3 3/8"								-	SEE BENDING DTL
TB-1	4	7	17	13'-7 1/8"	2'-2 1/4"	11'-6 7/8"						90	

REBAR SCHEDULE - 10.0 x 5.0 x 12 TOP UNIT													
MARK	QNTY	SIZE	TYPE	LGTH	B	C	D	E	H	K	O	ANGLE	REMARKS
H-1	8	4	-	4'-6"								-	
V-1	22	3	-	2'-0"								-	
V-2	6	6	-	7'-0"								-	
V-3	4	6	-	8'-6"								-	
S-2	4	3	3	2'-10"		10 3/8"	1'-2 3/8"	10 3/8"	7 1/2"	7 1/2"	2'-5"	45	
S-3	13	3	3	3'-3 3/8"								-	SEE BENDING DTL
TB-1	4	7	17	13'-7 1/8"	2'-2 1/4"	11'-6 7/8"						90	

REBAR SCHEDULE - 10.5 x 5.0 x 12 TOP UNIT													
MARK	QNTY	SIZE	TYPE	LGTH	B	C	D	E	H	K	O	ANGLE	REMARKS
H-1	8	4	-	4'-6"								-	
V-1	22	3	-	2'-0"								-	
V-2	6	6	-	7'-0"								-	
V-3	4	6	-	9'-0"								-	
S-2	4	3	3	2'-10"		10 3/8"	1'-2 3/8"	10 3/8"	7 1/2"	7 1/2"	2'-5"	45	
S-3	14	3	3	3'-3 3/8"								-	SEE BENDING DTL
TB-1	4	7	17	13'-7 1/8"	2'-2 1/4"	11'-6 7/8"						90	

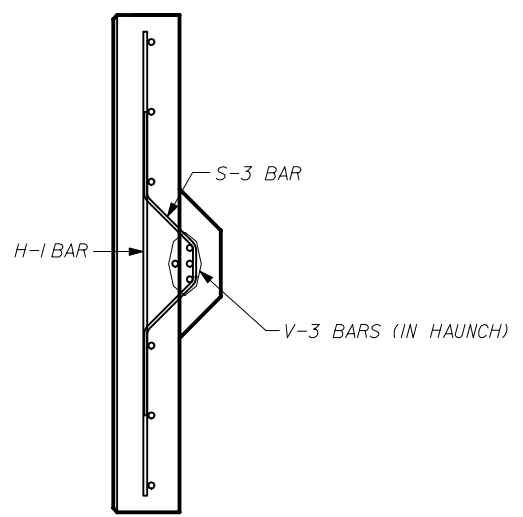


FRONT VIEW  
(V-1 BARS IN STEM AND V-3 BARS IN HAUNCH OMITTED FOR CLARITY)

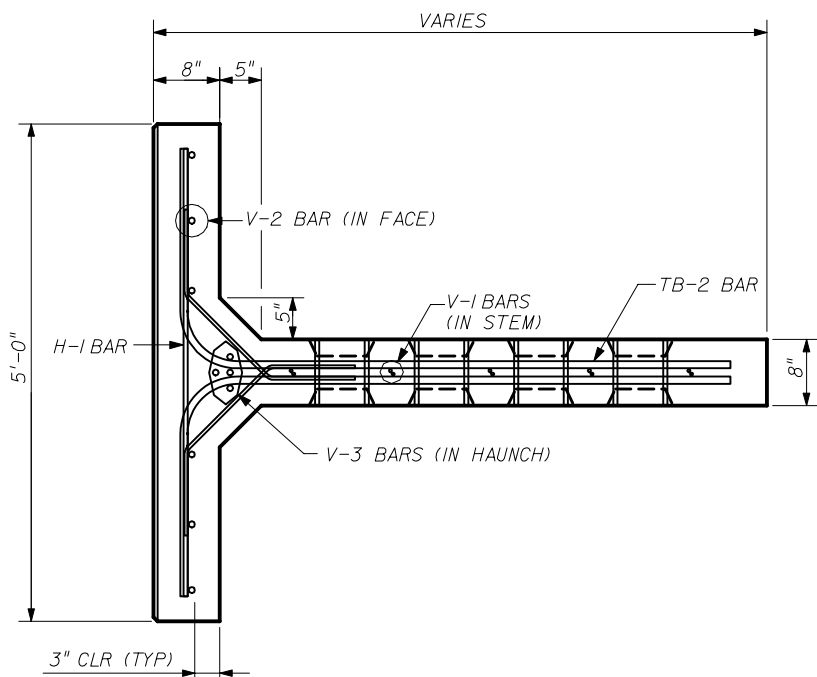


SIDE VIEW

SECTION A-A



SECTION B-B



TOP VIEW  
S-3 BARS IN EXTENDED HAUNCH OMITTED FOR CLARITY

1. ALL UNITS ON THIS SHEET WILL ONLY BE USED BY APPROVAL OF THE F.D.O.T. STRUCTURES DESIGN OFFICE ON A PROJECT BY PROJECT BASIS.

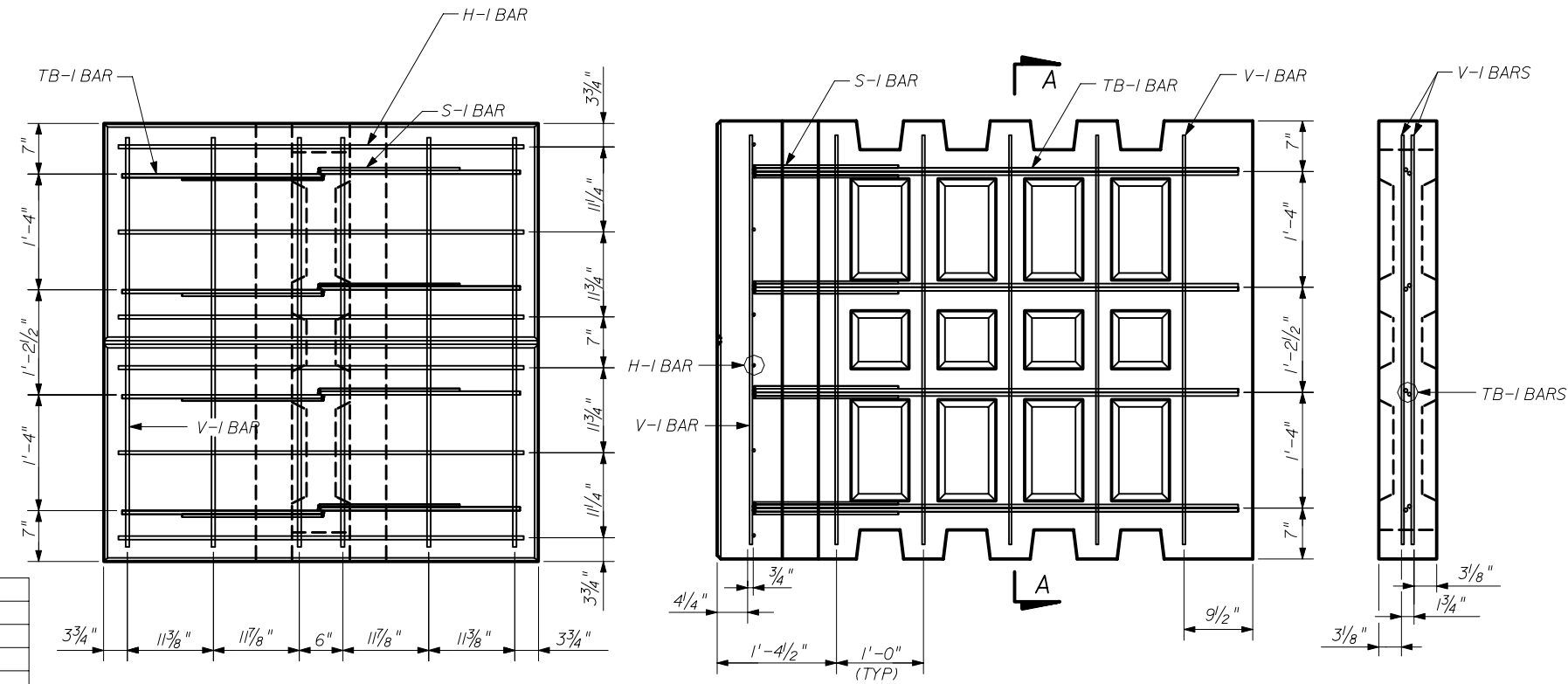
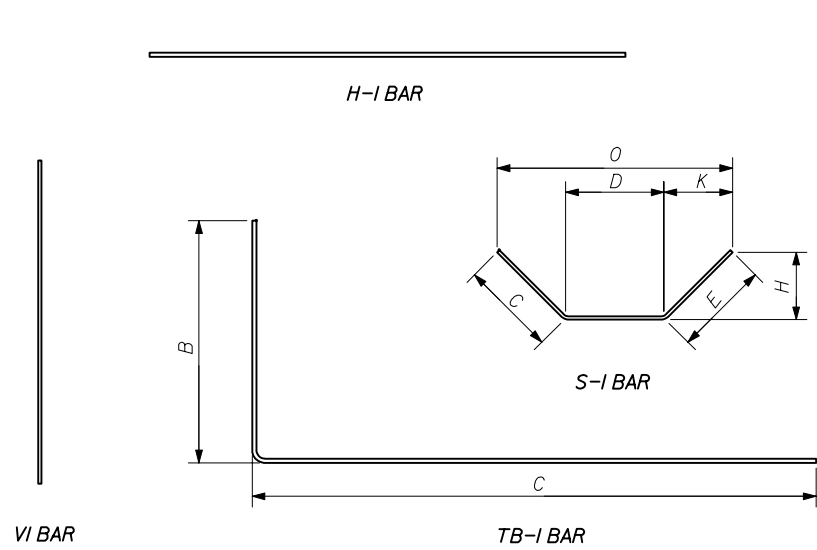
REINFORCING STEEL - TOP UNITS (III)

**THE NEEL COMPANY**  
8328-D TRAFORD LANE  
SPRINGFIELD, VIRGINIA 22152  
PH: (703) 913-7858  
FX: (703) 913-7859

**OLDCASTLE PRECAST, INC**  
5995 SOUDEL DR.  
JACKSONVILLE, FL 32219  
PH: (904) 768-7081  
FX: (904) 768-8428

NOTE: ALL STEEL REINFORCING BARS SHALL HAVE 3" MIN. CONCRETE COVER

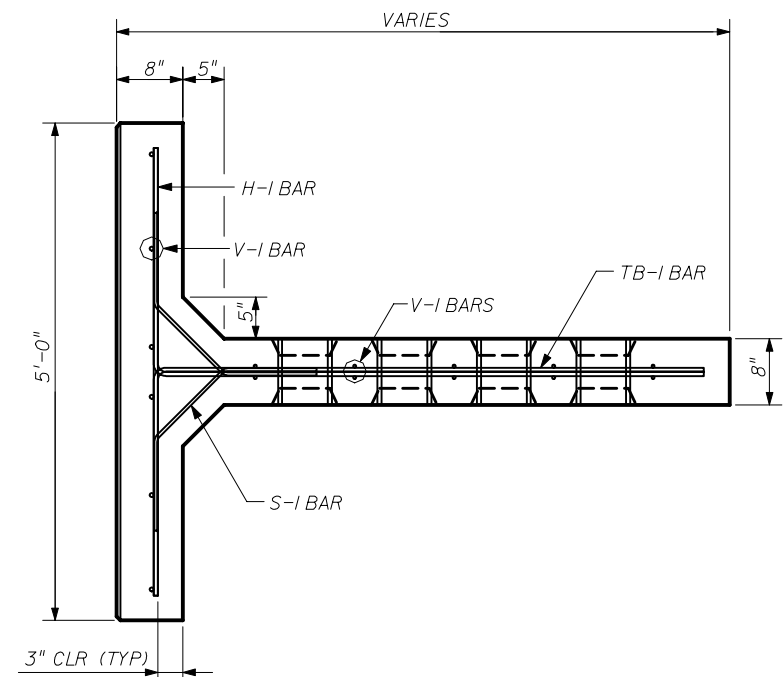
STATE OF FLORIDA DEPARTMENT OF TRANSPORTATION				
RETAINING WALL SYSTEM THE NEEL COMPANY T-WALL (3" COVER)				
Names	Dates	Approved By		
Designed By	JMC	10/01/98	 State Structures Design Engineer	
Drawn By	CAA	10/01/98		
Checked By	JMC	10/01/98	Revision	04
			Sheet No.	16 of 20
			Index No.	5010



FRONT VIEW  
(V-I BARS IN STEM OMITTED FOR CLARITY)

SIDE VIEW

SECTION A-A



TOP VIEW  
REINFORCING STEEL - DOUBLE UNITS

NOTE: ALL STEEL REINFORCING BARS SHALL HAVE 3" MIN. CONCRETE COVER

REBAR SCHEDULE - 5.0 x 5.0 x 04 DBL UNIT

MARK	QNTY	SIZE	TYPE	LGTH	B	C	D	E	H	K	O	ANGLE	REMARKS
H-I	6	4	-	4'-6"								-	
V-I	12	3	-	4'-6"								-	
S-I	8	3	3	2'-9 7/8"		11 1/4"	11 1/4"	11 1/4"	8"	8"	2'-3 3/4"	45	
TB-I	8	4	17	5'-8 1/2"	2'-3 1/2"	3'-6 1/2"						90	

REBAR SCHEDULE - 5.0 x 5.0 x 06 DBL UNIT

MARK	QNTY	SIZE	TYPE	LGTH	B	C	D	E	H	K	O	ANGLE	REMARKS
H-I	6	4	-	4'-6"								-	
V-I	16	3	-	4'-6"								-	
S-I	8	3	3	2'-9 7/8"		11 1/4"	11 1/4"	11 1/4"	8"	8"	2'-3 3/4"	45	
TB-I	8	4	17	7'-8 1/2"	2'-3 1/2"	5'-6 1/2"						90	

REBAR SCHEDULE - 5.0 x 5.0 x 08 DBL UNIT

MARK	QNTY	SIZE	TYPE	LGTH	B	C	D	E	H	K	O	ANGLE	REMARKS
H-I	6	4	-	4'-6"								-	
V-I	20	3	-	4'-6"								-	
S-I	8	3	3	2'-9 7/8"		11 1/4"	11 1/4"	11 1/4"	8"	8"	2'-3 3/4"	45	
TB-I	8	4	17	9'-8 1/2"	2'-3 1/2"	7'-6 1/2"						90	

REBAR SCHEDULE - 5.0 x 5.0 x 10 DBL UNIT

MARK	QNTY	SIZE	TYPE	LGTH	B	C	D	E	H	K	O	ANGLE	REMARKS
H-I	6	4	-	4'-6"								-	
V-I	24	3	-	4'-6"								-	
S-I	8	3	3	2'-9 7/8"		11 1/4"	11 1/4"	11 1/4"	8"	8"	2'-3 3/4"	45	
TB-I	8	4	17	11'-8 1/2"	2'-3 1/2"	9'-6 1/2"						90	

REBAR SCHEDULE - 5.0 x 5.0 x 12 DBL UNIT

MARK	QNTY	SIZE	TYPE	LGTH	B	C	D	E	H	K	O	ANGLE	REMARKS
H-I	6	4	-	4'-6"								-	
V-I	26	3	-	4'-6"								-	
S-I	8	3	3	2'-9 7/8"		11 1/4"	11 1/4"	11 1/4"	8"	8"	2'-3 3/4"	45	
TB-I	8	4	17	13'-8 1/2"	2'-3 1/2"	11'-6 1/2"						90	

REBAR SCHEDULE - 5.0 x 5.0 x 14 DBL UNIT

MARK	QNTY	SIZE	TYPE	LGTH	B	C	D	E	H	K	O	ANGLE	REMARKS
H-I	6	4	-	4'-6"								-	
V-I	32	3	-	4'-6"								-	
S-I	8	3	3	2'-9 7/8"		11 1/4"	11 1/4"	11 1/4"	8"	8"	2'-3 3/4"	45	
TB-I	8	4	17	15'-8 1/2"	2'-3 1/2"	15'-6 1/2"						90	

REBAR SCHEDULE - 5.0 x 5.0 x 16 DBL UNIT

MARK	QNTY	SIZE	TYPE	LGTH	B	C	D	E	H	K	O	ANGLE	REMARKS
H-I	6	4	-	4'-6"								-	
V-I	36	3	-	4'-6"								-	
S-I	8	3	3	2'-9 7/8"		11 1/4"	11 1/4"	11 1/4"	8"	8"	2'-3 3/4"	45	
TB-I	8	4	17	17'-8 1/2"	2'-3 1/2"	15'-6 1/2"						90	

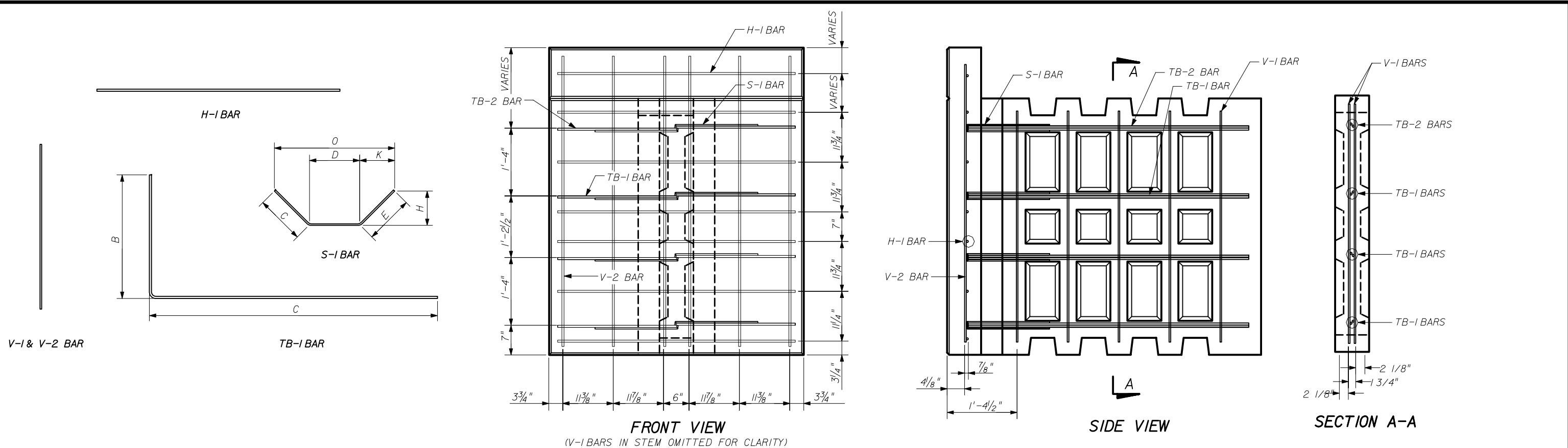
**THE NEEL COMPANY**  
8328-D TRAFORD LANE  
SPRINGFIELD, VIRGINIA 22152  
PH: (703) 913-7858  
FX: (703) 913-7859

**OLDCASTLE PRECAST, INC.**  
5995 SOUTEL DR.  
JACKSONVILLE, FL 32219  
PH: (904) 768-7081  
FX: (904) 768-8428

STATE OF FLORIDA DEPARTMENT OF TRANSPORTATION

**RETAINING WALL SYSTEM  
THE NEEL COMPANY T-WALL  
(3" COVER)**

Names	Dates	Approved By	
Designed By	JMC 10/01/98	[Signature]	
Drawn By	CAA 10/01/98		
Checked By	JMC 10/01/98		
Revision	04	Sheet No.	Index No.
		17 of 20	5010



**FRONT VIEW**  
(V-I BARS IN STEM OMITTED FOR CLARITY)

**SIDE VIEW**

**SECTION A-A**

REBAR SCHEDULE - 5.5 x 5.0 x 06 DBL TOP UNIT

MARK	QNTY	SIZE	TYPE	LGTH	B	C	D	E	H	K	O	ANGLE	REMARKS
H-1	6	4	-	4'-6"								-	
V-1	10	3	-	4'-6"								-	
V-2	6	5	-	5'-0"								-	
S-1	8	3	3	2'-9 7/8"		11 1/4"	11 1/4"	11 1/4"	8"	8"	2'-3 3/4"	45	
TB-1	8	5	17	7'-8 1/2"	2'-3 1/2"	5'-6 1/2"						90	

REBAR SCHEDULE - 6.0 x 5.0 x 06 DBL TOP UNIT

MARK	QNTY	SIZE	TYPE	LGTH	B	C	D	E	H	K	O	ANGLE	REMARKS
H-1	7	4	-	4'-6"								-	
V-1	10	3	-	4'-6"								-	
V-2	6	5	-	5'-6"								-	
S-1	8	3	3	2'-9 7/8"		11 1/4"	11 1/4"	11 1/4"	8"	8"	2'-3 3/4"	45	
TB-1	8	5	17	7'-8 1/2"	2'-3 1/2"	5'-6 1/2"						90	

REBAR SCHEDULE - 6.5 x 5.0 x 06 DBL TOP UNIT

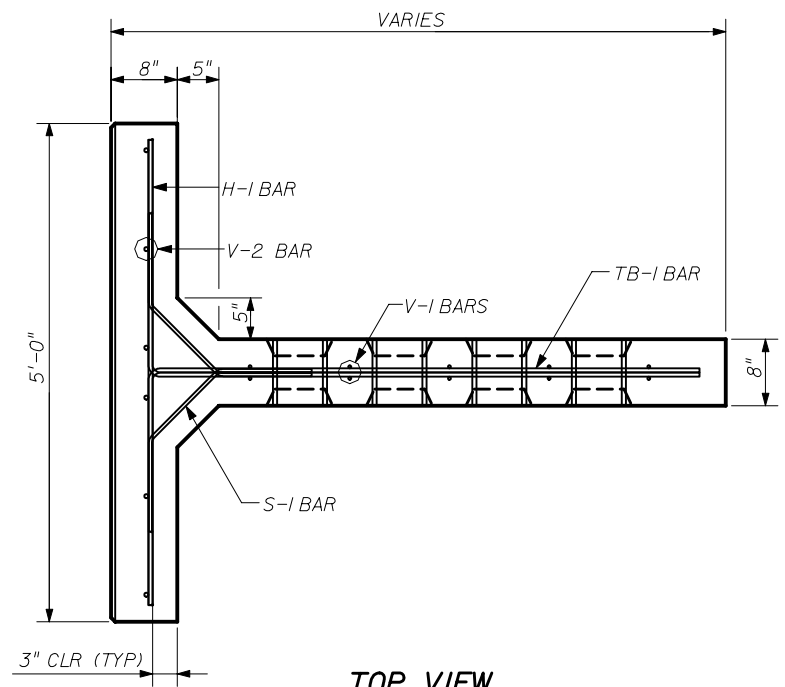
MARK	QNTY	SIZE	TYPE	LGTH	B	C	D	E	H	K	O	ANGLE	REMARKS
H-1	7	4	-	4'-6"								-	
V-1	10	3	-	4'-6"								-	
V-2	6	5	-	6'-0"								-	
S-1	8	3	3	2'-9 7/8"		11 1/4"	11 1/4"	11 1/4"	8"	8"	2'-3 3/4"	45	
TB-1	8	5	17	7'-8 1/2"	2'-3 1/2"	5'-6 1/2"						90	

REBAR SCHEDULE - 7.0 x 5.0 x 06 DBL TOP UNIT

MARK	QNTY	SIZE	TYPE	LGTH	B	C	D	E	H	K	O	ANGLE	REMARKS
H-1	8	4	-	4'-6"								-	
V-1	10	3	-	4'-6"								-	
V-2	6	5	-	6'-6"								-	
S-1	8	3	3	2'-9 7/8"		11 1/4"	11 1/4"	11 1/4"	8"	8"	2'-3 3/4"	45	
TB-1	8	5	17	7'-8 1/2"	2'-3 1/2"	5'-6 1/2"						90	

REBAR SCHEDULE - 7.5 x 5.0 x 06 DBL TOP UNIT

MARK	QNTY	SIZE	TYPE	LGTH	B	C	D	E	H	K	O	ANGLE	REMARKS
H-1	8	4	-	4'-6"								-	
V-1	10	3	-	4'-6"								-	
V-2	6	5	-	7'-0"								-	
S-1	8	3	3	2'-9 7/8"		11 1/4"	11 1/4"	11 1/4"	8"	8"	2'-3 3/4"	45	
TB-1	8	5	17	7'-8 1/2"	2'-3 1/2"	5'-6 1/2"						90	



**TOP VIEW**  
**REINFORCING STEEL - DOUBLE TOP UNITS (I)**

NOTE: ALL STEEL REINFORCING BARS SHALL HAVE 3" MIN. CONCRETE COVER

**THE NEEL COMPANY**  
8328-D TRAFORD LANE  
SPRINGFIELD, VIRGINIA 22152  
PH: (703) 913-7858  
FX: (703) 913-7859

**OLDCASTLE PRECAST, INC**  
5995 SOUTEL DR.  
JACKSONVILLE, FL 32219  
PH: (904) 768-7081  
FX: (904) 768-8428

STATE OF FLORIDA DEPARTMENT OF TRANSPORTATION

**RETAINING WALL SYSTEM  
THE NEEL COMPANY T-WALL  
(3" COVER)**

Names	Dates	Approved By		
Designed By	JMC 10/01/98	[Signature]		
Drawn By	CAA 10/01/98			
Checked By	JMC 10/01/98	Revision	Sheet No.	Index No.
		04	18 of 20	5010





