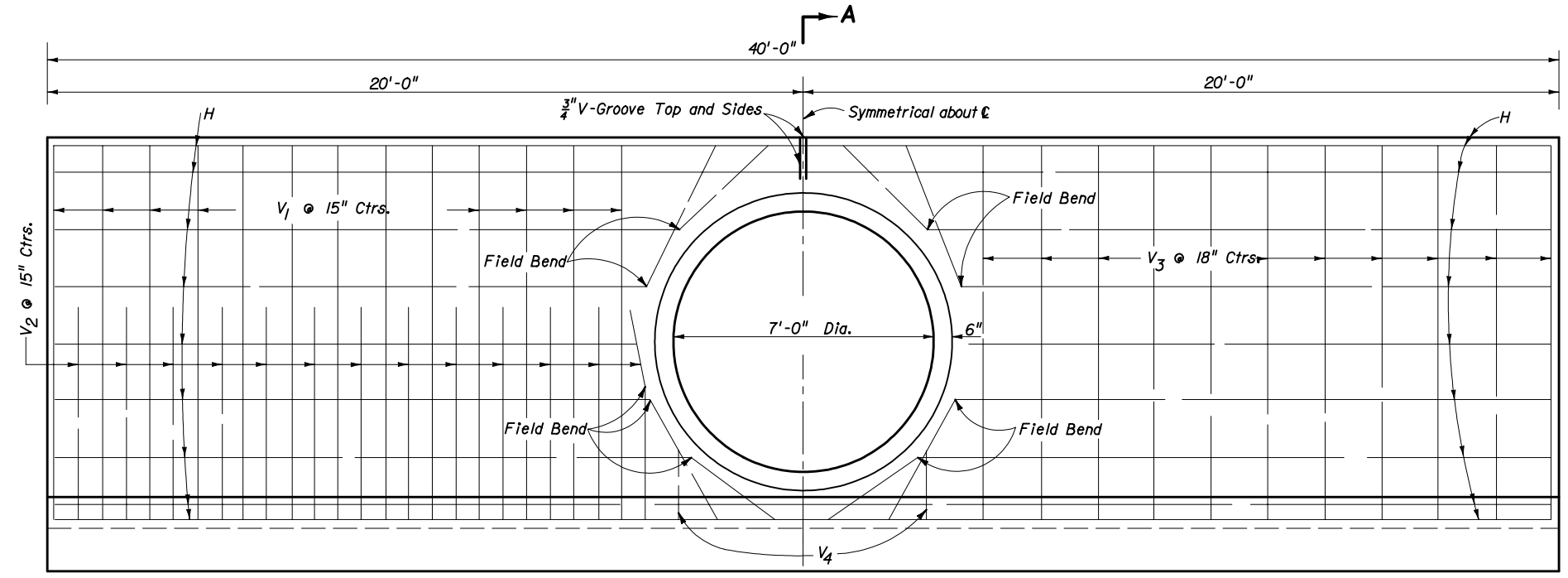


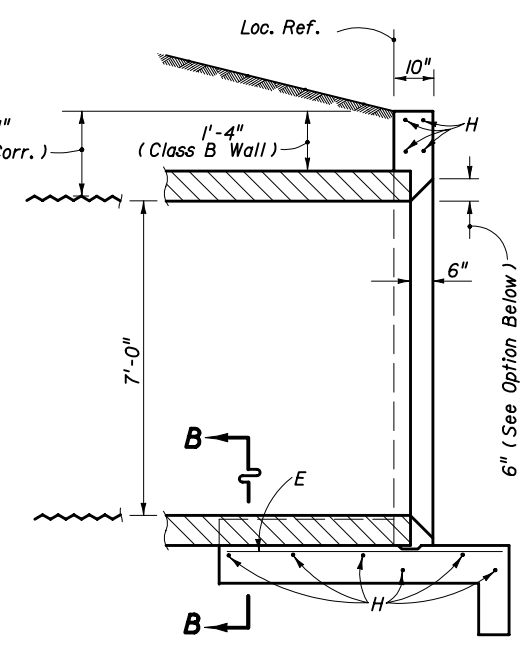
**PLAN**  
(Showing Bars In Footing)



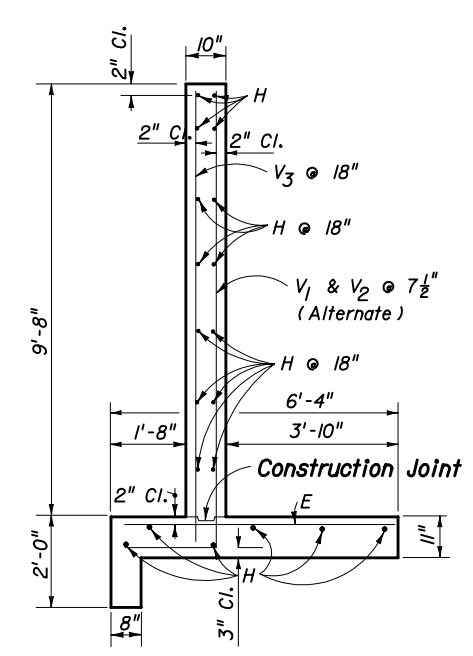
**HALF ELEVATION**  
(Showing Bars In Back Face Of Wall)

**GENERAL NOTES**

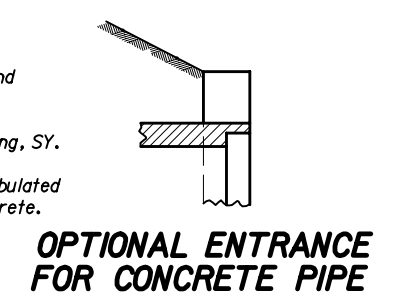
1. Straight concrete endwalls are intended for use outside the clear zone.
2. Endwalls may be cast-in-place or precast construction. Cast-in-place endwalls shall conform to the details on this index, design specifications AASHTO 1989. Precast construction which adheres to this index, including any additional reinforcement required for handling which shall be determined by the Contractor or supplier, does not require additional approvals. Deviations from this index, for precast units, shall require the approval of the State Drainage Engineer prior to construction. For precast construction, see Index No. 201 for opening and grouting details.
3. Reinforcing steel shall be either Grade 40 or 60.
4. Concrete shall be Class II except concrete meeting the requirements of ASTM C 478 (4000 PSI) may be used in lieu of Class II concrete in precast units manufactured in plants which are under the Standard Operating Procedures for the inspection of precast drainage products.
5. Chamfer: All exposed edges and corners to be chamfered 3/4" unless otherwise shown.
6. That portion of corrugated metal pipe in direct contact with the concrete slab and extending 12" beyond shall be bituminous coated prior to placing of the concrete.
7. Sodding shall be in accordance with Index No. 281 and paid for under the contract unit price for Sodding, SY.
8. Basis of payment for either cast-in-place or precast construction shall be the estimated quantities tabulated on the index. Concrete and reinforcing steel shall be paid for under the contract unit prices for Concrete, Class II (Endwalls), CY and Reinforcing Steel (Roadway), LB.



**SECTION AA**

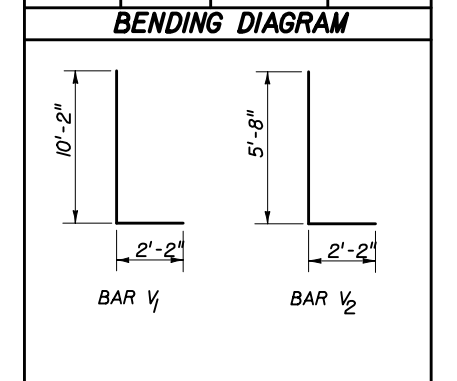


**TYPICAL SECTION THRU ENDWALL**



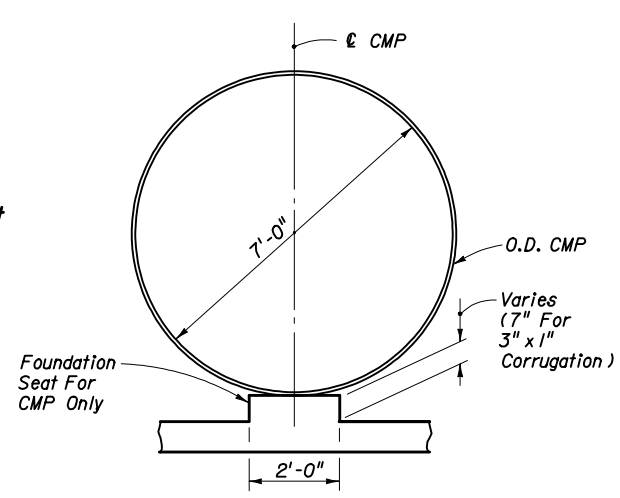
**OPTIONAL ENTRANCE FOR CONCRETE PIPE**

BILL OF REINFORCING STEEL			
MARK	SIZE	NO. REQ'D	LENGTH
E	6	69	6'-0"
H	4	20	39'-8"
V1	6	26	12'-4"
V2	6	26	7'-10"
V3	4	22	10'-2"
V4	4	4	2'-0"



NOTE: All bar dimensions are out to out

ESTIMATED QUANTITIES			
ITEM	UNIT	RCP	CMP
Concrete Class II	Cu. Yd.	20.0	20.2
Reinforcing Steel	Lb.	2,095	2,095



**SECTION BB**

STATE OF FLORIDA DEPARTMENT OF TRANSPORTATION

**STRAIGHT CONCRETE ENDWALL**  
SINGLE 84" PIPE

Designed By	Names	Dates	Approved By
Drawn By	WHW	07/58	State Drainage Engineer
Checked By	HCG	07/58	Revision
			Sheet No.
			Index No.
			04
			1 of 1
			255