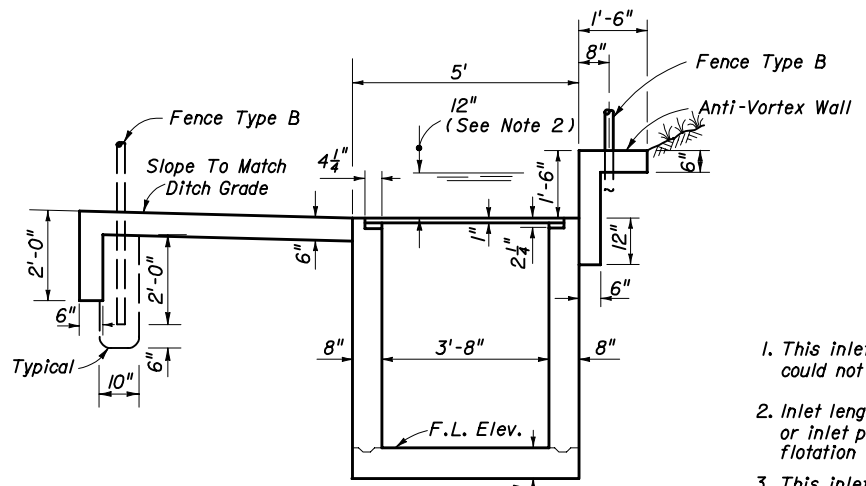
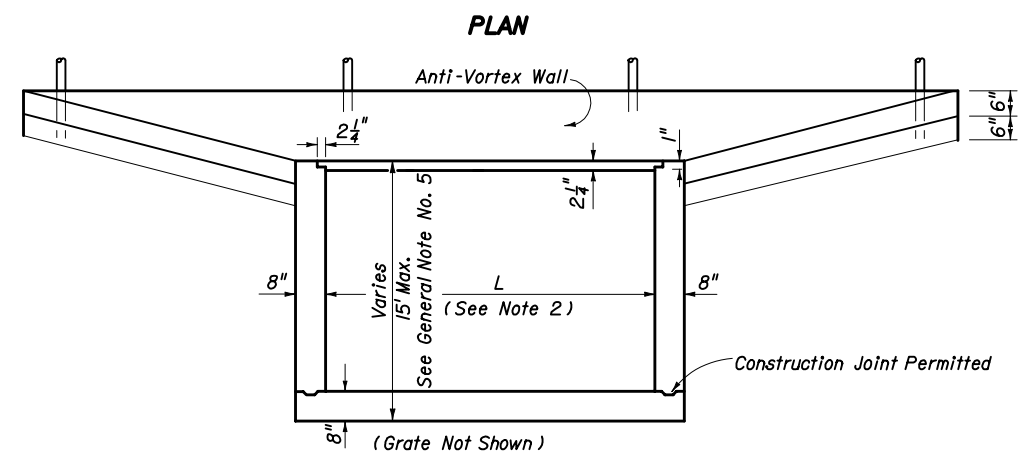
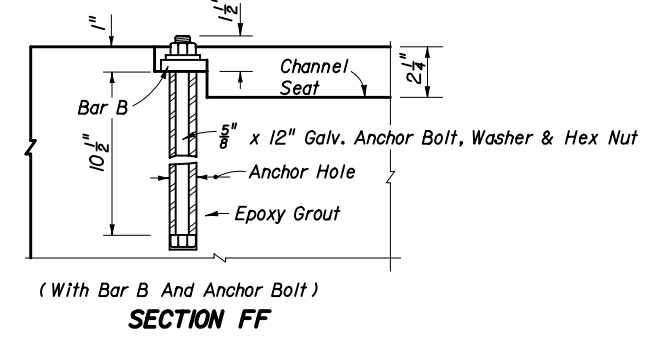
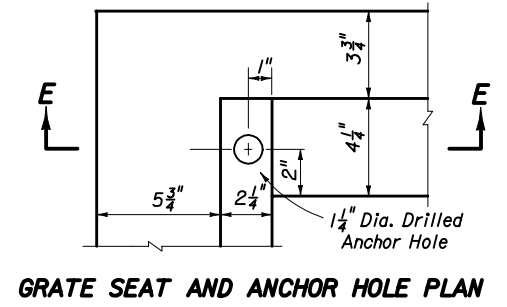
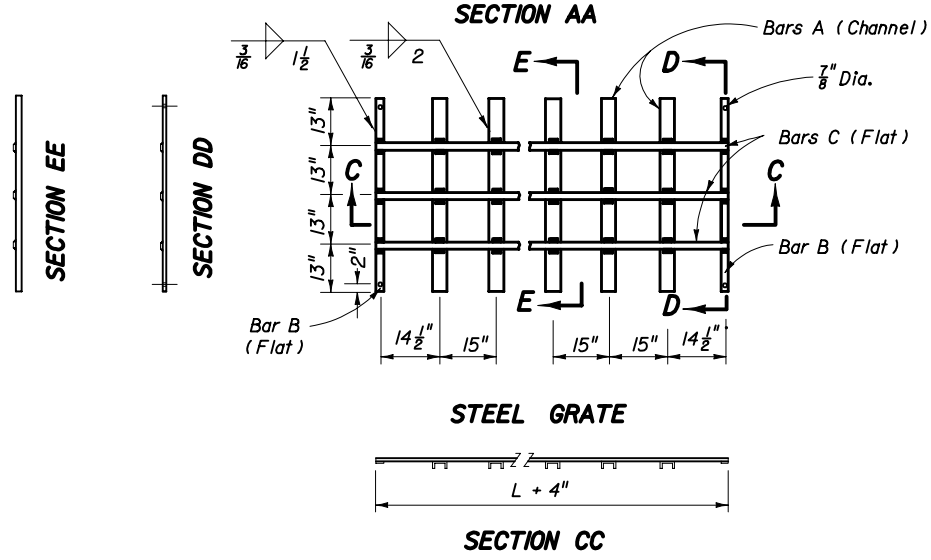


GRATE QUANTITIES						
PIPE SIZE	L	BILL OF STEEL			STEEL WEIGHT	
		BAR	No. REQ'D.	LENGTH	CHANNEL 4" x 5.4 #	FLAT 2" x 1/2" (3.4 #)
30" & 36"	4'-9"	A	3	4'-4"	70	
		B	2	4'-4"		30
		C	3	5'-1"		52
42" & 48"	6'-0"	A	4	4'-4"	94	
		B	2	4'-4"		30
		C	3	6'-4"		65
54" & 60"	7'-3"	A	5	4'-4"	117	
		B	2	4'-4"		30
		C	3	7'-7"		77
66" & 72"	8'-6"	A	6	4'-4"	140	
		B	2	4'-4"		30
		C	3	8'-10"		90
SPECIAL	9'-9"	A	7	4'-4"	164	
		B	2	4'-4"		30
		C	3	10'-1"		103
SPECIAL	11'-0"	A	8	4'-4"	187	
		B	2	4'-4"		30
		C	3	11'-4"		116
SPECIAL	12'-3"	A	9	4'-4"	211	
		B	2	4'-4"		30
		C	3	12'-7"		128
SPECIAL	13'-6"	A	10	4'-4"	234	
		B	2	4'-4"		30
		C	3	13'-10"		141
SPECIAL	14'-9"	A	11	4'-4"	257	
		B	2	4'-4"		30
		C	3	15'-1"		154
SPECIAL	16'-0"	A	12	4'-4"	281	
		B	2	4'-4"		30
		C	3	16'-4"		167
SPECIAL	17'-3"	A	13	4'-4"	304	
		B	2	4'-4"		30
		C	3	17'-7"		179
SPECIAL	18'-6"	A	14	4'-4"	328	
		B	2	4'-4"		30
		C	3	18'-10"		192



GENERAL NOTES

- This inlet is to be used at locations having high flow rates, usually where an endwall could not be utilized without hazardous intake.
- Inlet length (L) shall be set by the designer for the greater of either culvert requirement or inlet pool not to exceed 12" depth. Structures over 6' in depth are to be checked for flotation by the designer of project drainage.
- This inlet is not intended for use with Alternate B structure bottoms.
- Inlet and anti-vortex wall to be Class I Concrete.
- Reinforcing - #4 bars at 12" centers both ways for pipe sizes up to 72" diameter; 1 1/2" clearance to inside face and bottom of Inlet. See Index No. 201, Sh. 4 & 5 for reinf. steel modification for depths 13' to 15'. Bend top and corner bars to clear anchor holes. Inlets for special size pipe require special reinforcement design and design approval by the project design engineer.
- Channel section C 3 x 6 may be used as an alternate for the C 4 x 5.4 channel.
- Channels and bars shall be ASTM A242/A242M, A572/A572M or A588/A588M, Grade 50 steel, and galvanized in accordance with Section 962-7 of the Standard Specifications.
- Fence enclosure shall be Fence Type B (Index No. 452). All posts to be set in concrete. A minimum of 10 posts required. Corner and approach side posts to be 3" nominal diameter.
- Cost of ditch paving, anti-vortex wall, grate, concrete, reinforcing steel and fence enclosure to be included in the cost of inlet. Inlet to be paid for under the contract unit price for Inlets (DT Bot) (Type K), Each.



STATE OF FLORIDA DEPARTMENT OF TRANSPORTATION

DITCH BOTTOM INLET TYPE K

Names	Dates	Approved By					
Designed By	FHWA	 State Drainage Engineer					
Drawn By	SM 6/79				Revision	Sheet No.	Index No.
Checked By	JG 6/79				00	1 of 1	235