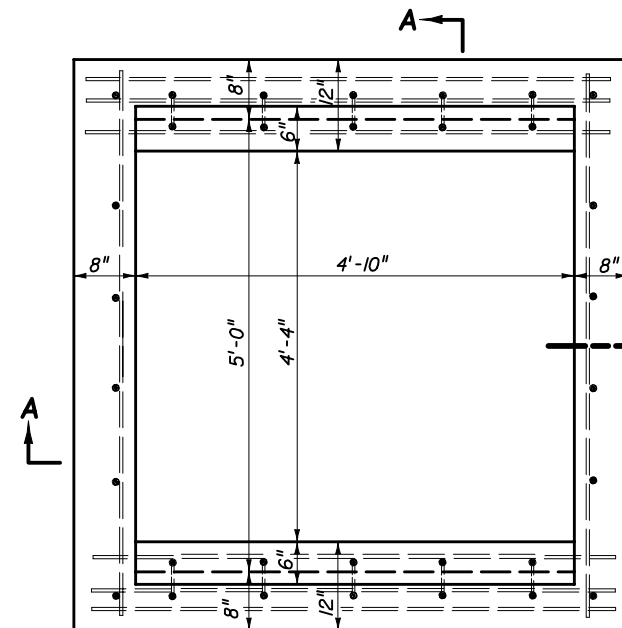
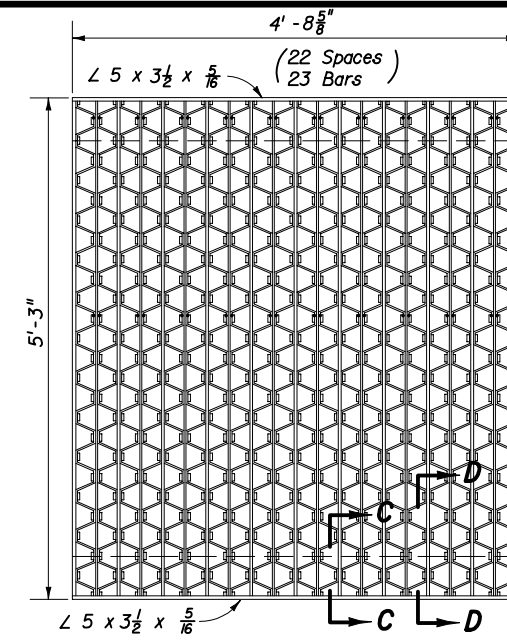


PLAN B

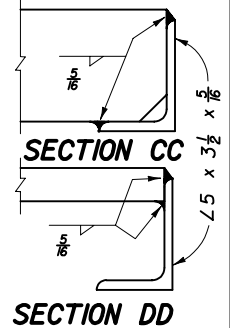


PLAN B

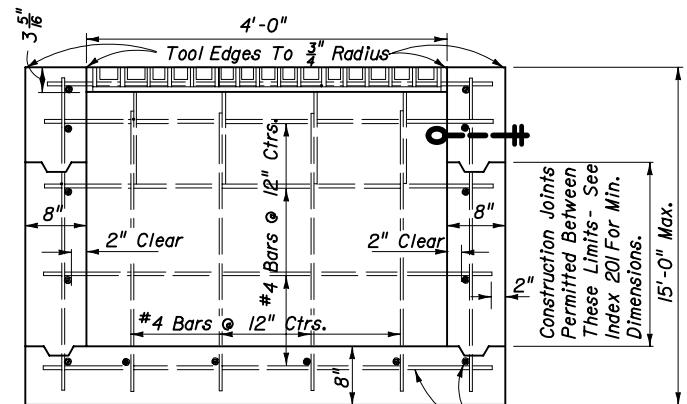


STEEL GRATE

5" Steel Decking, Weight 630 Lbs. Main Bars 5" x 1/4" Intermediate Bars 1 1/2" x 1/4", Reticuline Bars 1 1/4" x 3/16"

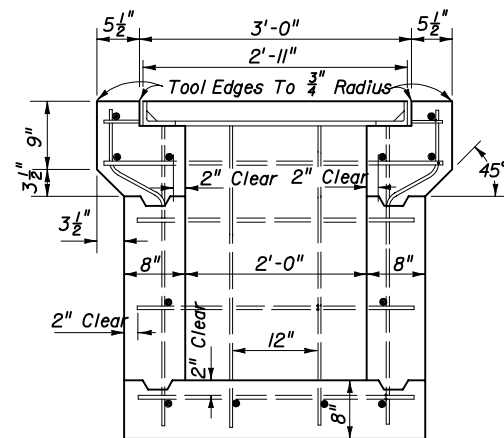


SECTION DD

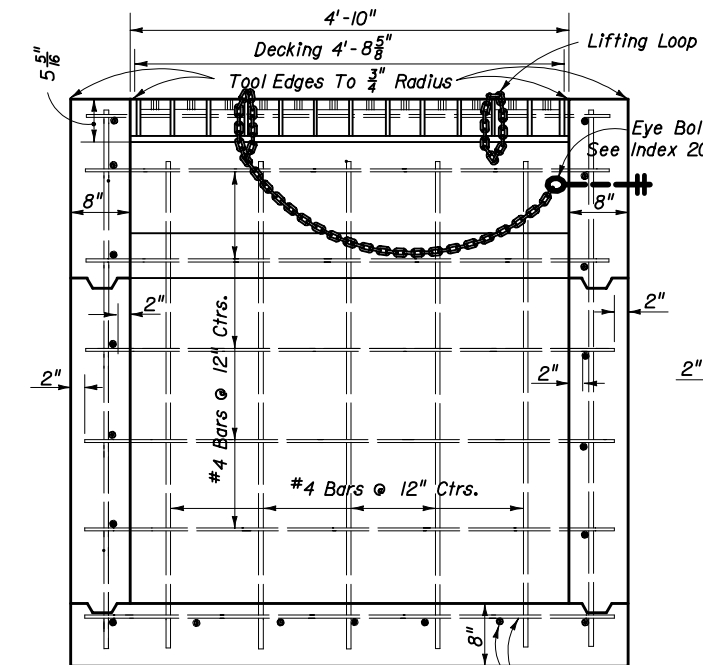


SECTION AA

#4 Bars @ 12" Ctrs.

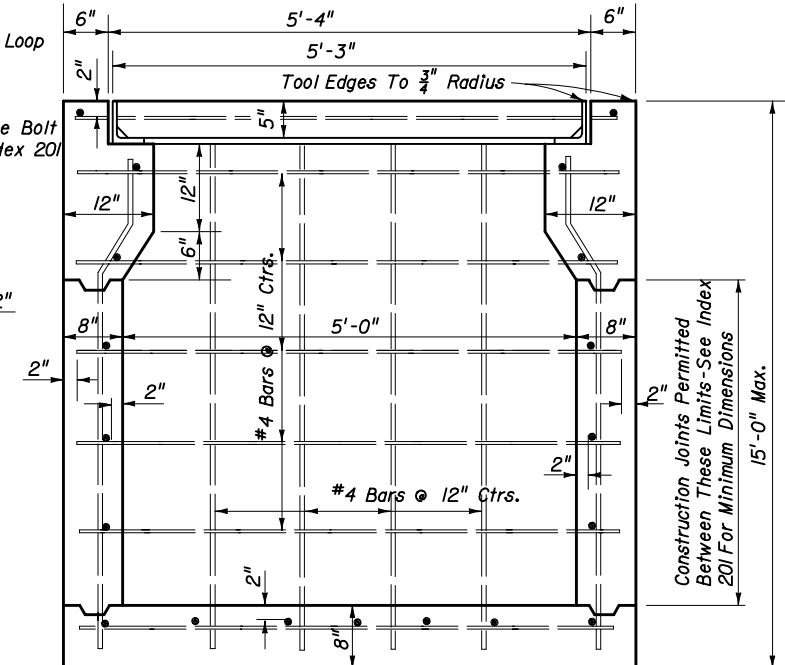


SECTION BB



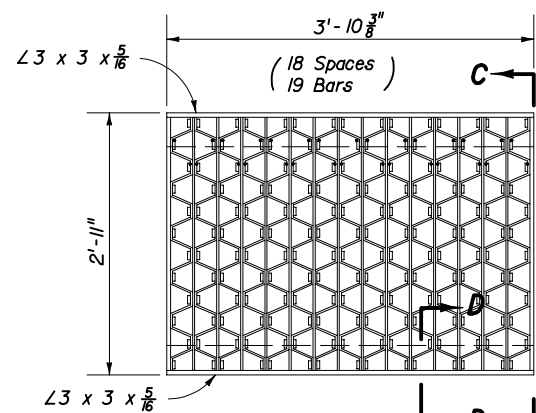
SECTION AA

#4 Bars @ 12" Ctrs.



SECTION BB

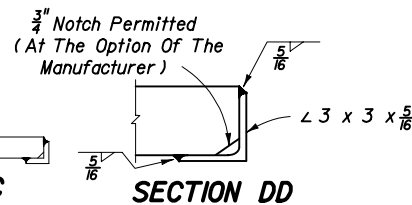
Construction Joints Permitted Between These Limits - See Index 201 For Minimum Dimensions - 15'-0" Max.



STEEL GRATE

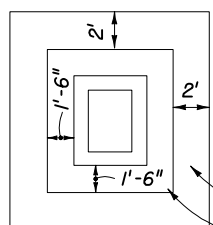
Steel Grating, Straight Bars 3" x 1/4" Reticuline Bars 2" x 3/16"

TYPE F



SECTION CC

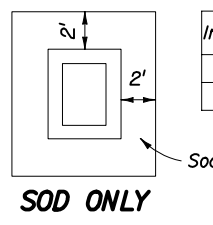
SECTION DD



PAVT. AND SOD

Inlet	Pavt Cy*	Sod SY
G	0.43	10
F	0.34	9

*For Estimating Purposes Only



SOD ONLY

Notes: 1. Pavement and/or sod to be used only where called for in the plans.
2. Cost of paving to be included in cost of inlet.

PAVEMENT AND SODDING

GENERAL NOTES

- These inlets are designed for use in ditches, medians, pavement areas, or other areas subject to heavy wheel loads, minimal debris, and bicycle traffic. This inlet may be placed in areas subject to occasional pedestrian traffic such as landscaped areas and pavement areas where pedestrians can walk around the inlet.
- When alternate G grate is specified in plans, the grate is to be hot dipped galvanized after fabrication.
- These inlets may be used with Alt. B structure bottoms, Index 200. The inlet and bottom combinations are to be paid for under the contract unit price for Inlets (DT Bot) (Type F (or G)) (J Bot, Depth), Ea.
- For supplemental details (Type F only), see Index 201.

TYPE G

STATE OF FLORIDA DEPARTMENT OF TRANSPORTATION

DITCH BOTTOM INLETS
TYPES F & G

Names	Dates	Approved By				
Designed By	TWJ 01/50	 State Drainage Engineer				
Drawn By	MEF 01/50				Revision	Sheet No.
Checked By	WHM 01/50				04	1 of 1
				Index No.		
				233		