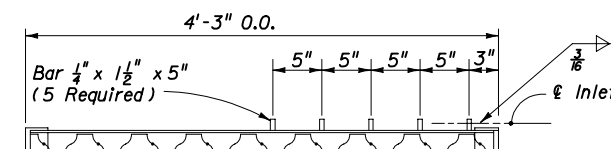


NOTE: Alt. B Structure Bottom Only. See Index No. 200 for structure bottom details and hole reinforcement. (For Pipes 30" Dia. And Larger)

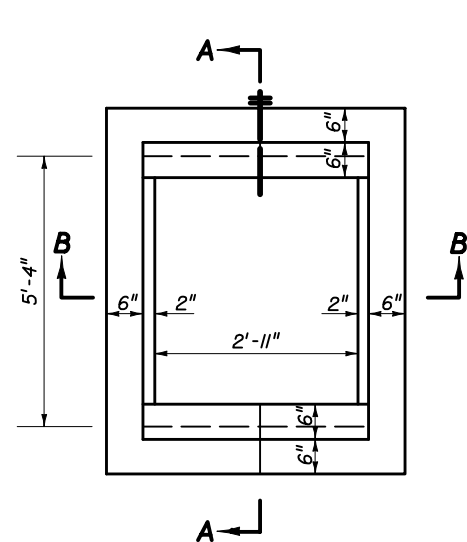
**INLET WITH STRUCTURE BOTTOM**

**GENERAL NOTES**

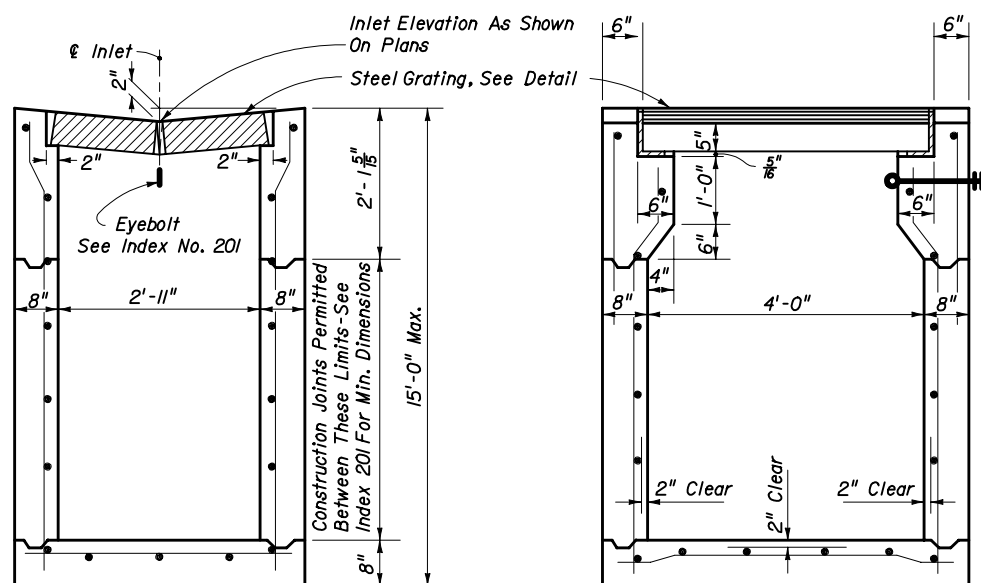
1. This inlet is suitable for village swales, ditches, or other areas subject to heavy wheel loads, minimum debris, and bicycle traffic. This inlet may be placed in areas subject to occasional pedestrian traffic such as landscaped areas and pavement areas where pedestrians can walk around the inlet.
2. When alternate "G" grate is specified in plans, the grate is to be hot dipped galvanized after fabrication.
3. Reinforcing - #4 bars at 12" ctrs. both ways. Cut or bend bars out of way of pipe to clear pipe 1/2".
4. All exposed edges and corners shall be tooled to 1/4" radius.
5. Recommended maximum pipe sizes shown are for concrete pipe.
6. For supplementary details see Index No. 201.
7. Inlet to be paid for under the contract unit price for Inlets (Gutter Type V), EA.



**OPTIONAL BAR SPACING**



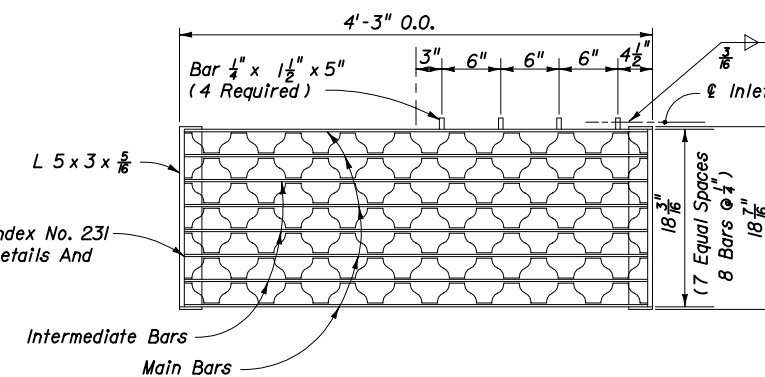
**PLAN**



**SECTION BB**

**SECTION AA**

Recommended Maximum Pipe Size:  
2'-11" Wall - 24" Size  
4'-0" Wall - 30" Size



**STEEL GRATE**

TWO REQUIRED PER INLET  
5" Steel Grate Main Bars 5" x 1/4"  
Intermediate Bars 1 1/2" x 1/4" Reticuline Bars 1 1/4" x 3/8"  
Steel Grate : Manufactured By Borden, Florida Steel, U.S. Foundry Irving, Reliance, Greulich ( Or Equal ).

STATE OF FLORIDA DEPARTMENT OF TRANSPORTATION				
<b>GUTTER INLET TYPE V</b>				
Names	Dates	Approved By <i>[Signature]</i>		
Designed By		State Drainage Engineer		
Drawn By	WHW 4/57	Revision	Sheet No.	Index No.
Checked By	RMM 4/57	04	1 of 1	221