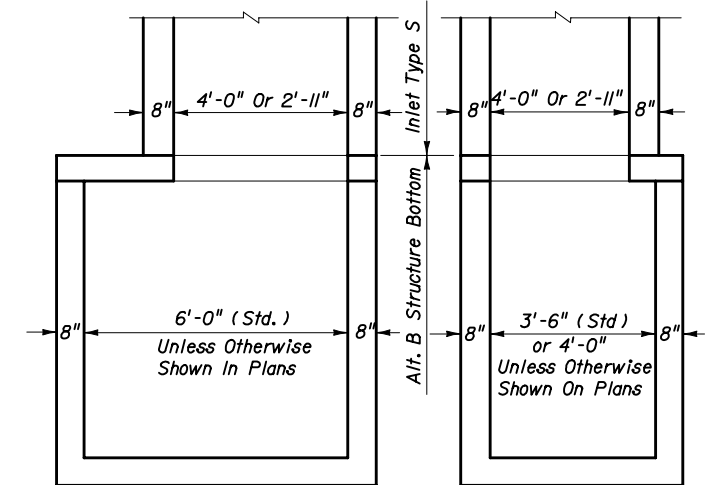


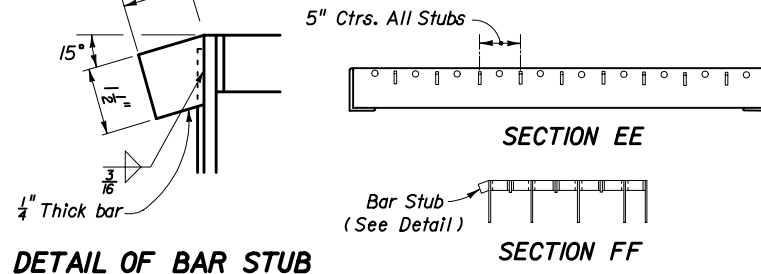
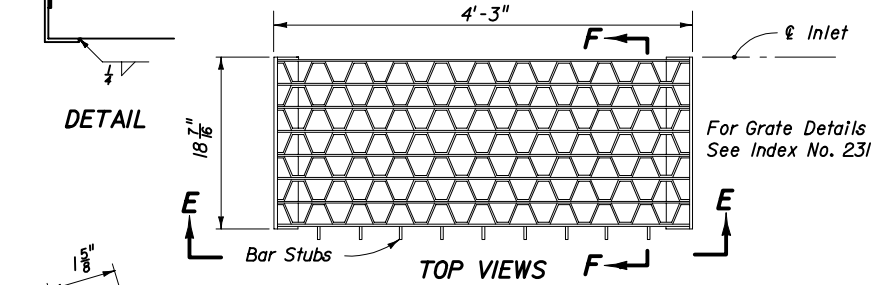
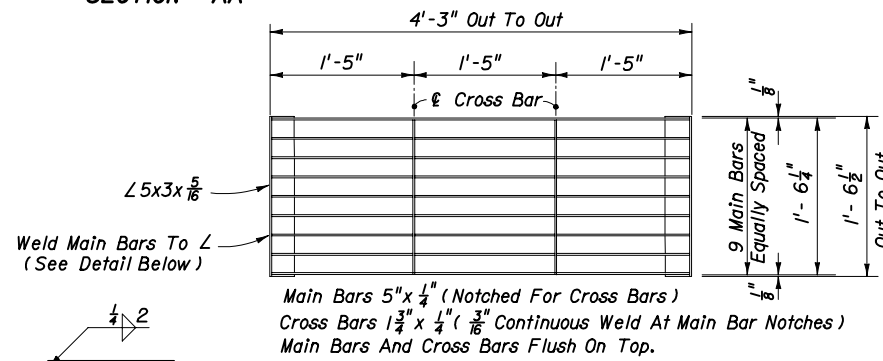
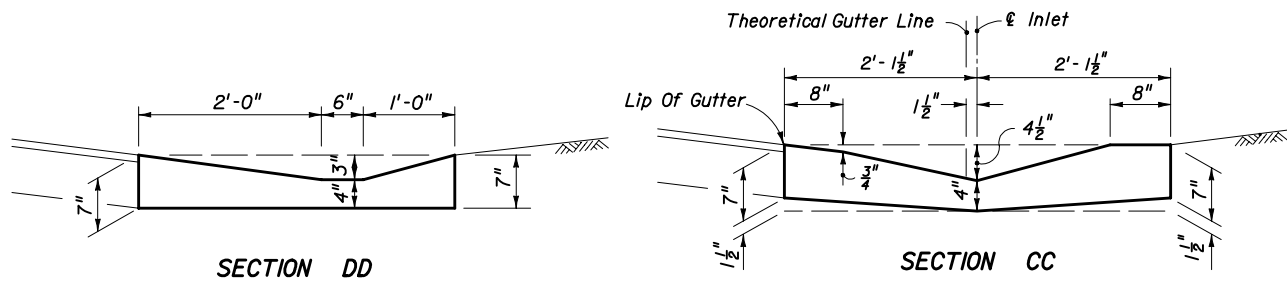
RECOMMENDED MAXIMUM PIPE SIZES	
INLET INSIDE WIDTH	PIPE SIZE
2'-11"	24"
4'-0"	30"

Note: Recommended sizes are for concrete pipe. Sizes for other types of pipe must be verified for fit in accordance with Index No. 201. For larger pipe see bottom detail right and Index No. 200.



NOTE: Alt. B Structure Bottom Only. See Index No. 200 for structure bottom details and hole reinforcement.

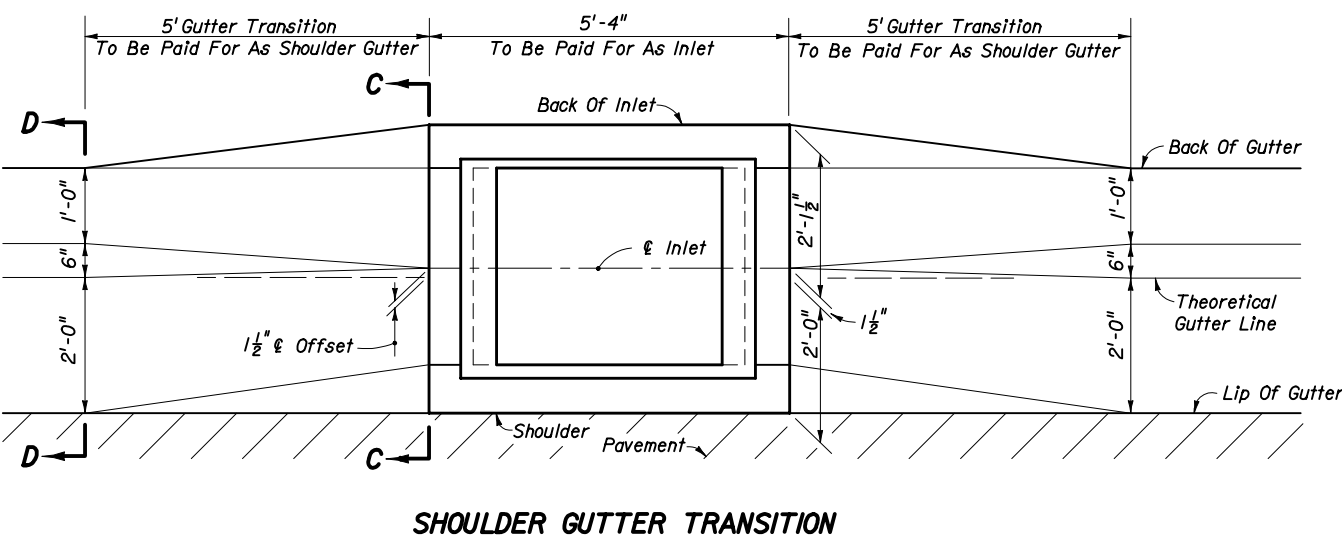
**INLET WITH STRUCTURE BOTTOM**



**STEEL GRATE**

**GENERAL NOTES**

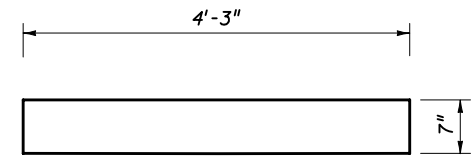
1. This inlet is intended for use in shoulder gutter on facilities subject to heavy wheel loads. The parallel bar grate shall be used on limited access facilities. On other facilities the reticuline grate shall be used. Locate inlet outside of designated pedestrian travel way.
2. Reinforcing steel all No. 4 bars at 12" centers both ways with 2" clearance to inside of walls and bottom. Bars to be cut or bent for 1 1/2" minimum clearance around pipe.
3. All exposed edges and corners shall be tooled to 3/4" radius.
4. When Alternate G grate is specified in plans, the grate is to be hot dipped galvanized after fabrication.
5. For supplementary details see Index Nos. 200 and 201.
6. Inlets to be paid for under the contract unit price for inlets (Gutter Type S), EA. Cost of concrete apron at terminal inlets to be included in the cost of the inlet.



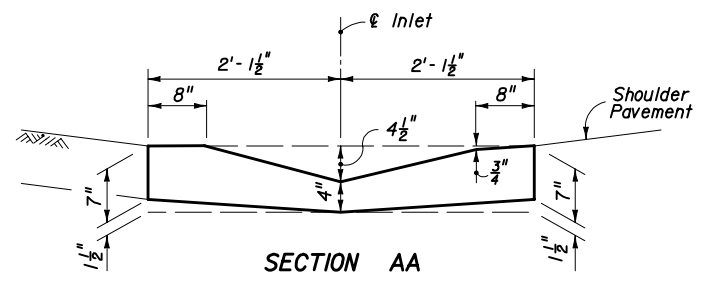
STATE OF FLORIDA DEPARTMENT OF TRANSPORTATION

**GUTTER INLET TYPE S**

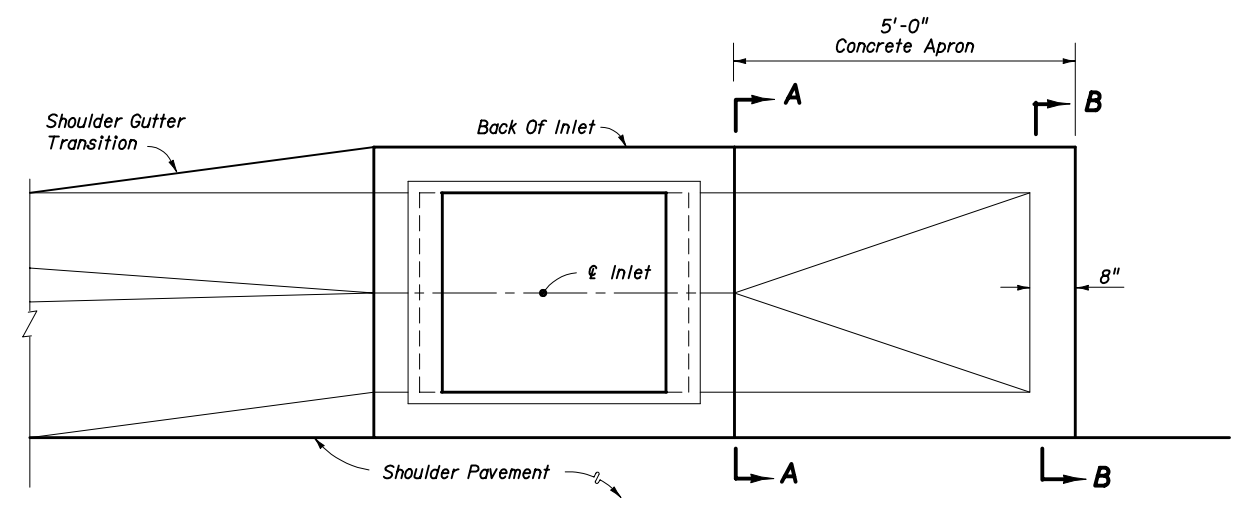
Names	Dates	Approved By		
Designed By		 State Drainage Engineer		
Drawn By				
Checked By				
		Revision	Sheet No.	Index No.
		04	1 of 2	220



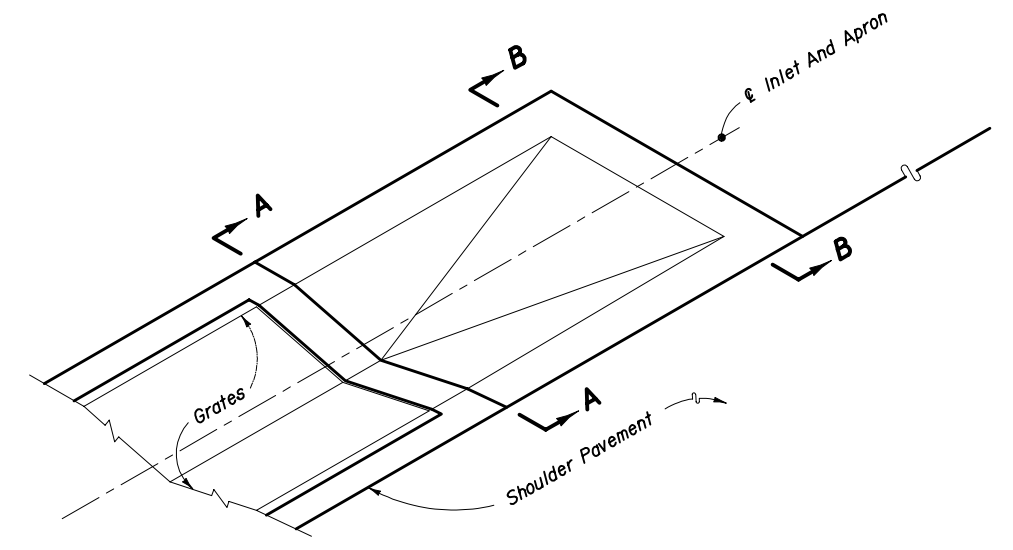
SECTION BB  
(ENLARGED)



SECTION AA  
(ENLARGED)



TOP VIEW



Grate Type Not Shown

PICTORIAL VIEW

Apron To Be Constructed At The Most Downstream Inlet In A Run Of Shoulder Gutter  
**CONCRETE APRON AT TERMINAL INLETS**

STATE OF FLORIDA DEPARTMENT OF TRANSPORTATION

**GUTTER INLET  
TYPE S**

Designed By	Names	Dates	Approved By <i>[Signature]</i> State Drainage Engineer		
Drawn By	JDT	06/02	Revision	Sheet No.	Index No.
Checked By			04	2 of 2	220