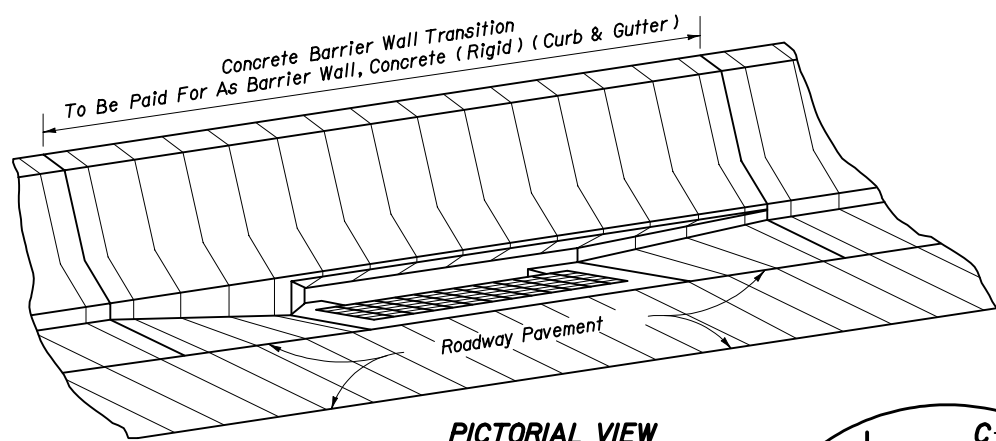
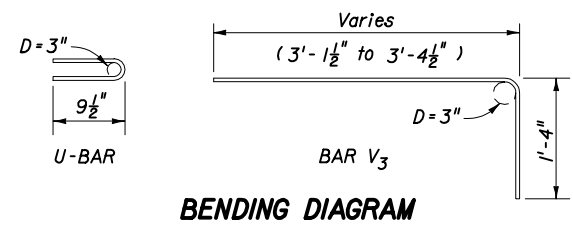


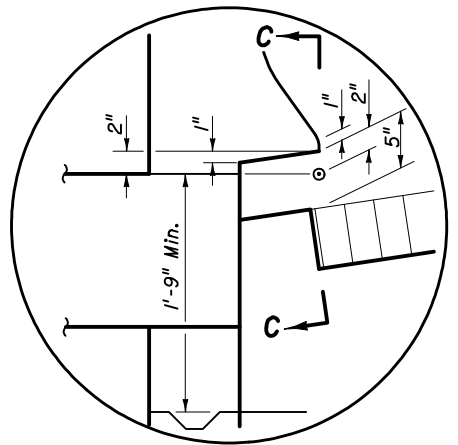
SECTION CC



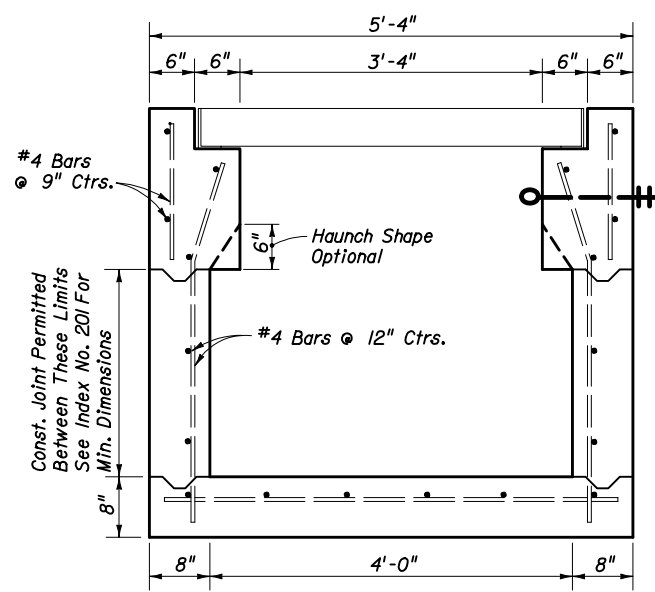
PICTORIAL VIEW



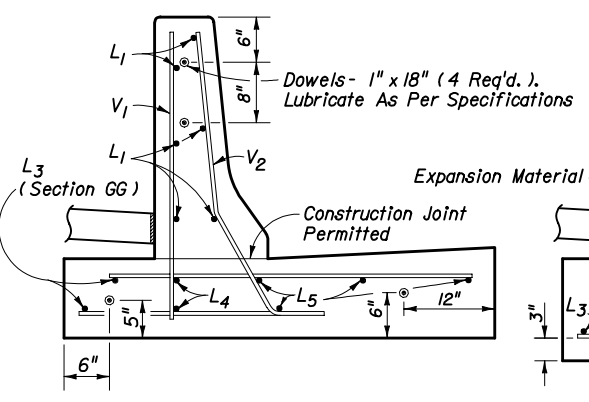
BENDING DIAGRAM



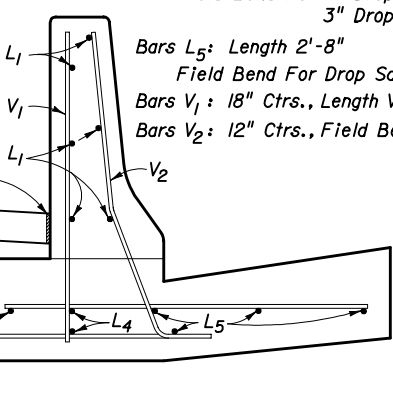
INSET A



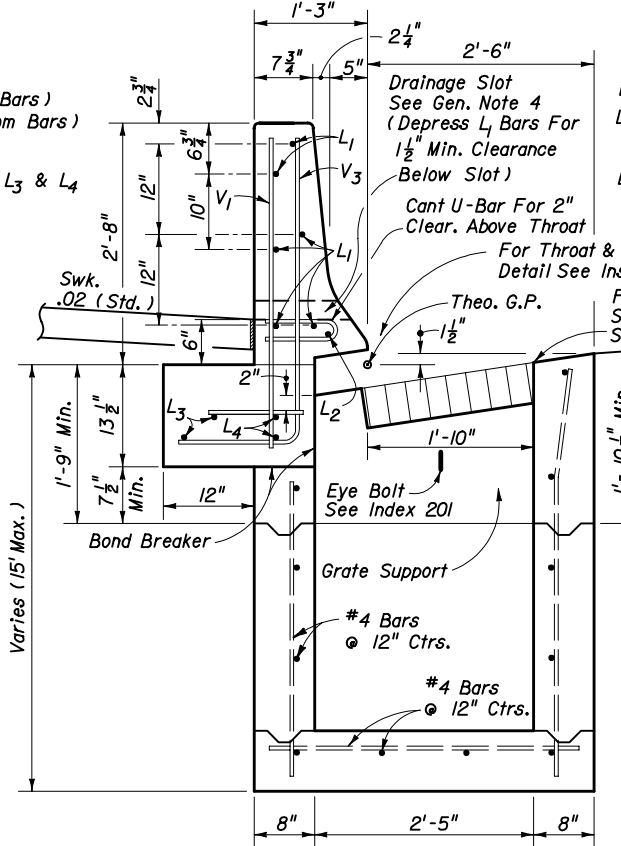
SECTION AA



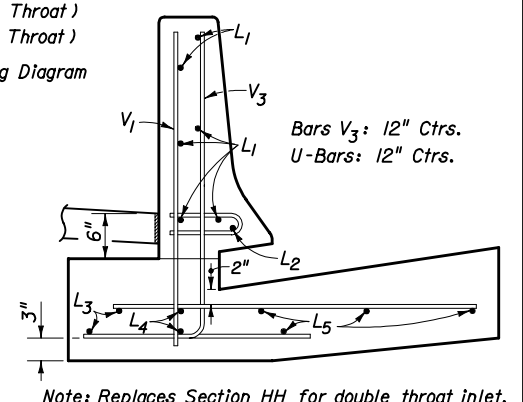
SECTION FF & GG



SECTION HH



SECTION BB




SECTION JJ

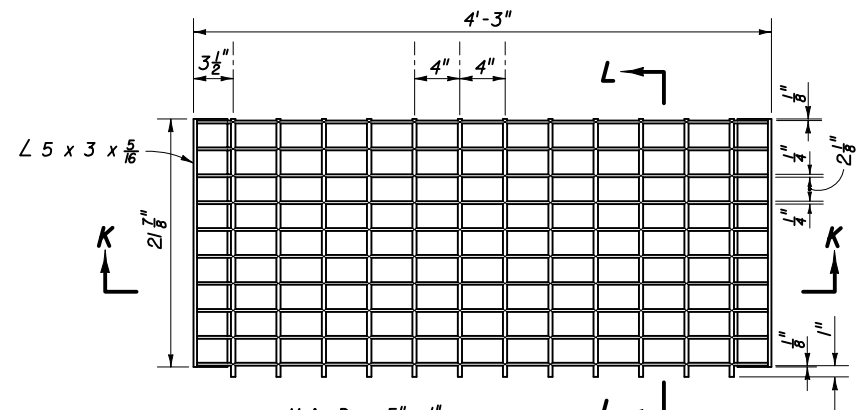
GENERAL NOTES

1. This inlet to be used in conjunction with Barrier Wall, Concrete (Rigid) (Curb & Gutter), Index No. 410.
2. All reinforcing steel #4 bars. Reinforcing shall have 2" min. cover unless otherwise shown. Cost to be included in cost for concrete barrier wall.
3. Barrier wall shall be Class II concrete, finished in accordance with Index No. 410.
4. A flat 18" x 2 1/2" drainage slot shall be constructed at the inlet centerline when the inlet is located in a curb sag. No more than one V1 bar, one V3 bar and one U-bar are to be deleted for construction of the drainage slot.
5. For supplemental details see Index Nos. 201 and 410.
6. Recommended maximum pipe sizes are 18" longitudinal and 30" transverse. For larger pipe, use Alt. B bottoms, Index No. 200.
7. Grates can be fabricated with reticulate bars or with either 3/8" dia electroforged or 1/2" dia welded cross bars and full depth bars as detailed.
8. When Alternate G grate is specified in plans, the grate is to be hot dipped galvanized after fabrication.
9. For pay item purposes the height of the structure shall be computed using the theoretical gutter elevation, less the flow line elevation of the lowest pipe or to top of sump floor.
10. Inlets to be paid for under the contract unit price for Inlets (Barrier Wall) (Rigid) (Curb & Gutter), Each.
11. Barrier wall to be paid for under the contract unit price for Barrier Wall, Concrete (Rigid-Curb & Gutter) LF.

STATE OF FLORIDA DEPARTMENT OF TRANSPORTATION

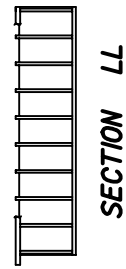
BARRIER WALL INLET
BARRIER WALL, CONCRETE (RIGID) (C & G)

Names	Dates	Approved By		
Designed By	EGR/JVG 9/89	 State Drainage Engineer		
Drawn By	JBW 9/89			
Checked By	EGR/JVG 9/89			
Revision	04			
Index No.	219			

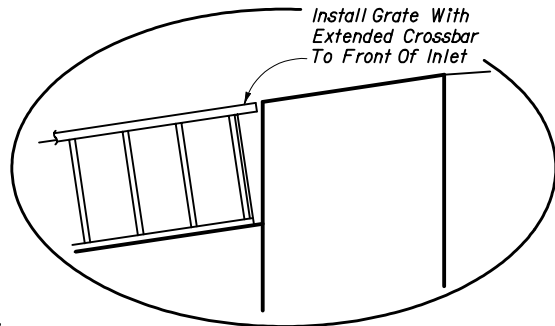


Main Bars 5" x 1/4"
 Cross Bars : Either 3/8" ∅ Electroforged Or 1/2" ∅ Welded

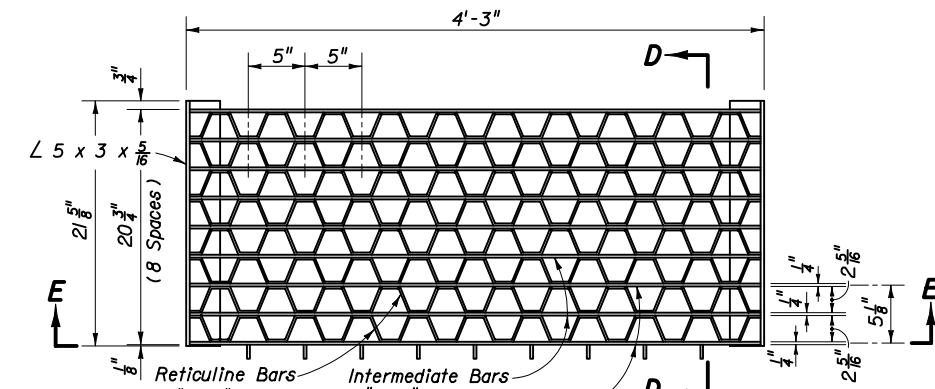
PLAN



SECTION LL

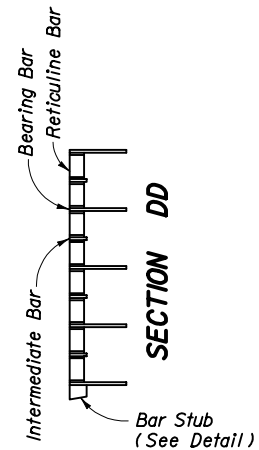


INSET B

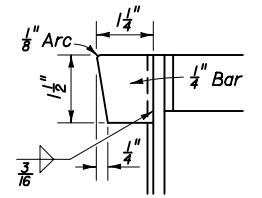


Reticuline Bars 1 1/4" x 3/16"
 Intermediate Bars 1 1/2" x 1/4"
 Bearing Bars 5" x 1/4"

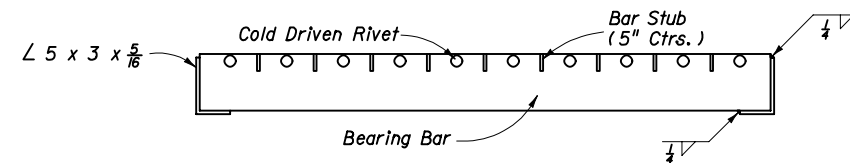
PLAN



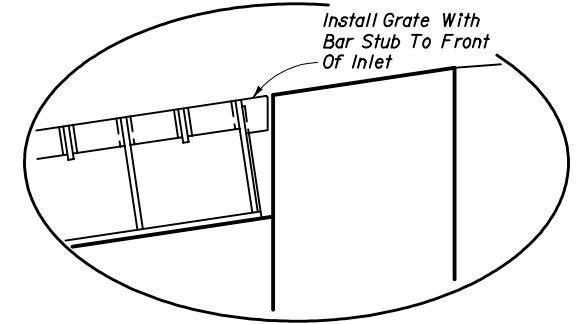
SECTION DD



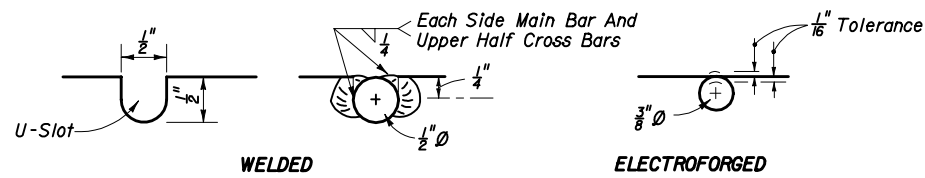
BAR STUB



SECTION EE



INSET C



CROSS BAR OPTIONS


CROSS BAR

RETICULINE

OPTIONAL STEEL GRATES

STATE OF FLORIDA DEPARTMENT OF TRANSPORTATION

BARRIER WALL INLET
 BARRIER WALL, CONCRETE (RIGID) (C & G)

Names		Dates	Approved By					
Designed By	EGR/JVG	9/89	 State Drainage Engineer					
Drawn By	JBW	9/89						
Checked By	EGR/JVG	9/89	Revision	00	Sheet No.	2 of 2	Index No.	219