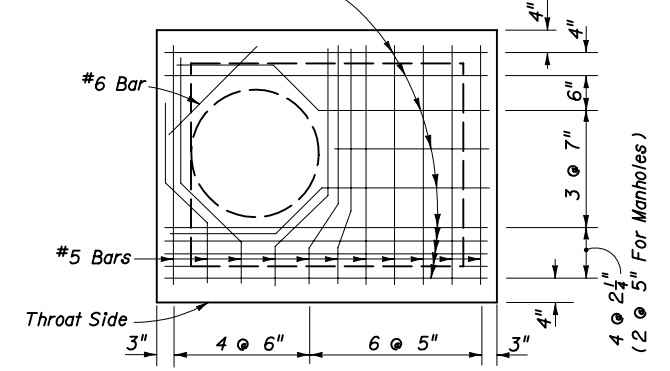
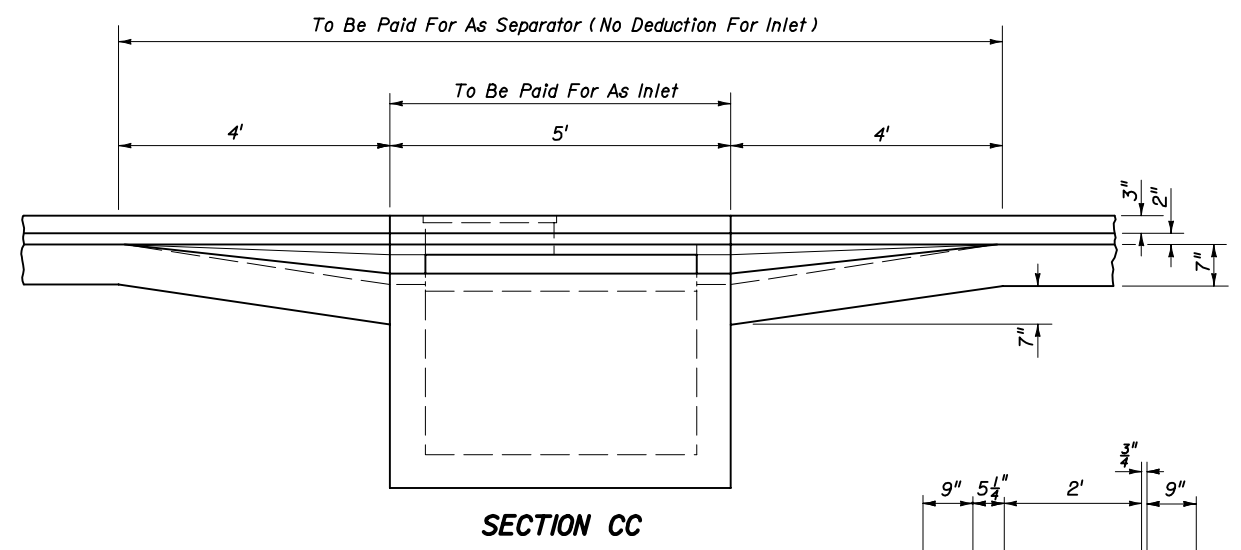


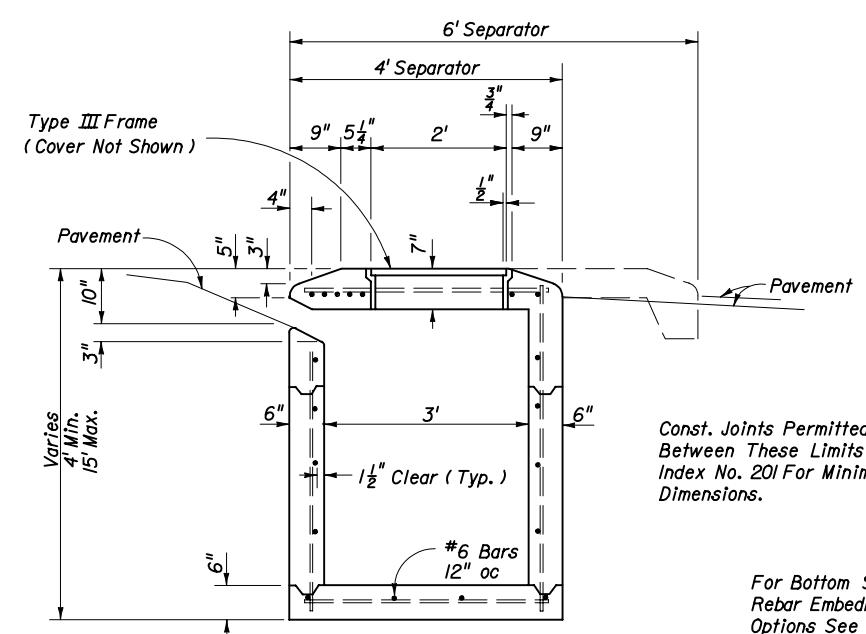
#6 Bars
 ACI Std. Hooks Required Each End Of
 Straight Bars And Right End Of Bent
 Bars: 180° Hooks, Canted 60° (+), On
 Odd Bars; 90° Hooks, Down, On Even
 Bars Numbered From Throat Side.



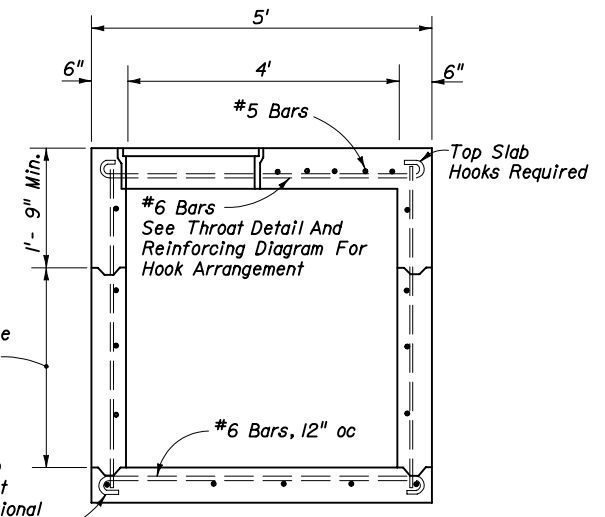
REINFORCING STEEL DIAGRAM
 TOP SLAB OF INLETS



SECTION CC



SECTION AA

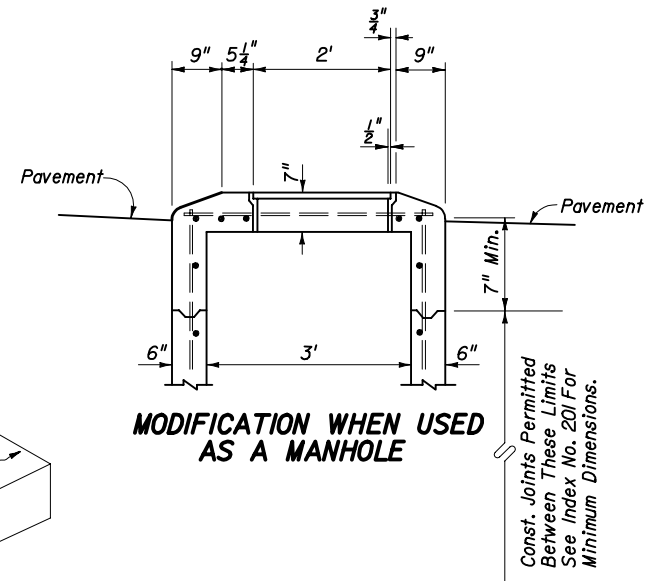


SECTION BB

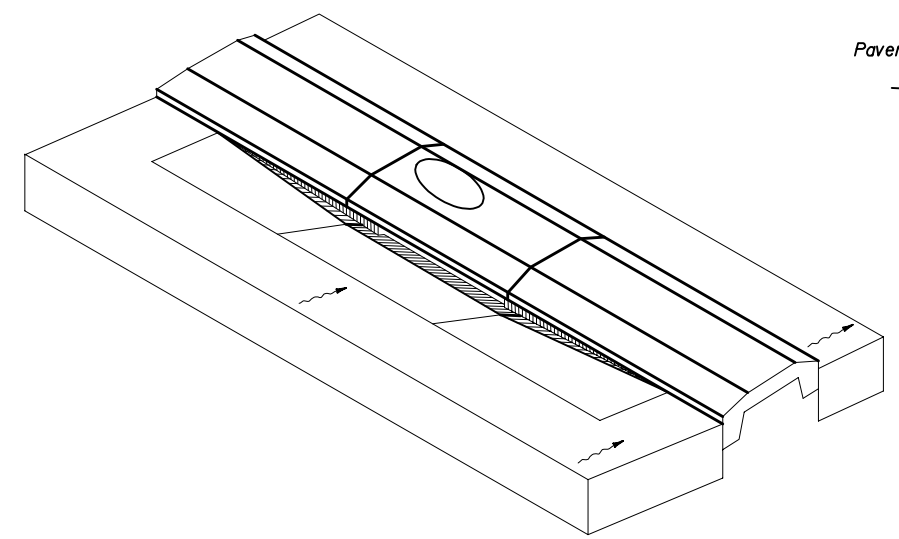
GENERAL NOTES

1. This inlet is used in Traffic Separators Types I and II; or, in separators constructed with Curbs Types A, B and E and sidewalk paving, which cannot accommodate inlets Types 1, 2, 3, 4, 5, or 6. Use of this Inlet on through traffic side of the separator is not permitted in medians with Curb Types A and B. Locate inlet outside of designated pedestrian travel way.
2. Reinforcing - #4 bars @ 12" centers unless otherwise noted. Cut or bend bars out of way of pipe when necessary. Bars to clear pipe by 1/2".
3. Recommended maximum pipe sizes are 24" longitudinal and 30" transverse. For larger pipe, inlets with Alt. B bottoms, Index No. 200 are recommended.
4. For supplementary details see Index No. 201.
5. Inlet to be paid for under the contract unit price for Inlets (Curb) (Type 7), Each.

MODIFICATION WHEN USED
 AS A MANHOLE



Const. Joints Permitted
 Between These Limits
 See Index No. 201 For
 Minimum Dimensions.



STATE OF FLORIDA DEPARTMENT OF TRANSPORTATION				
CURB INLET TYPE 7				
Designed By	EGR	08/81	Approved By <i>[Signature]</i> State Drainage Engineer	
Drawn By	HSD	08/81	Revision	Sheet No.
Checked By	JG	08/81	04	1 of 1
				Index No. 212