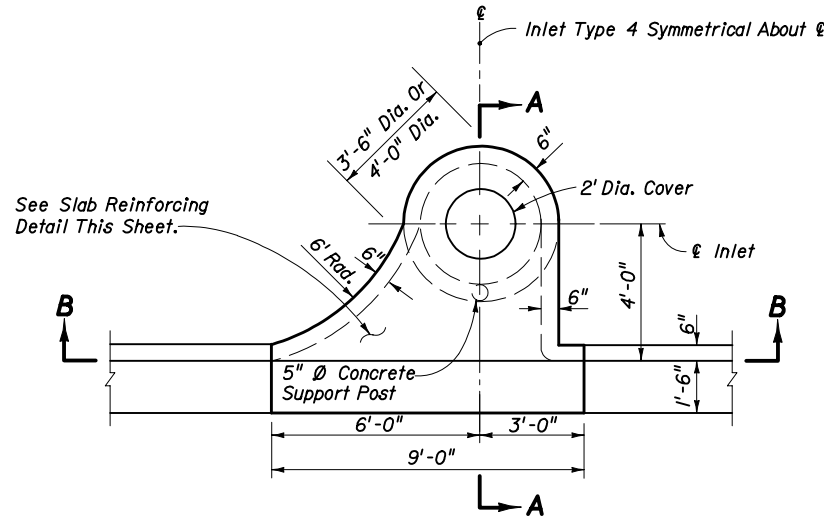
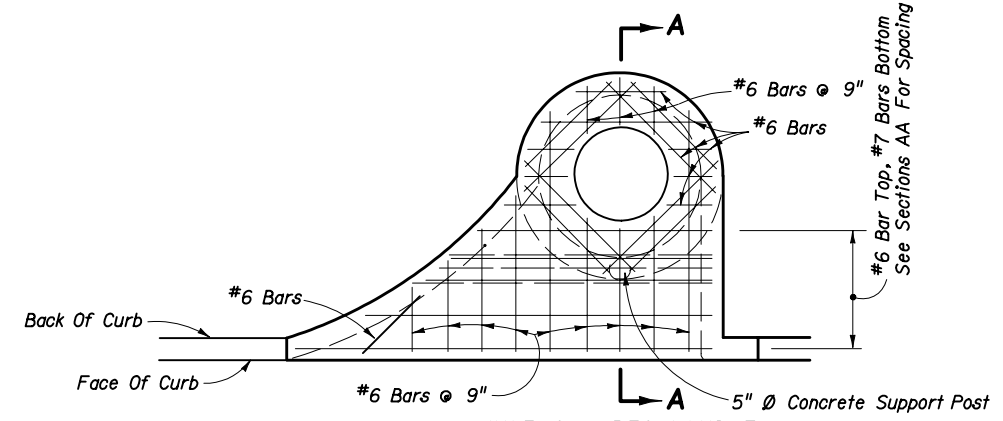


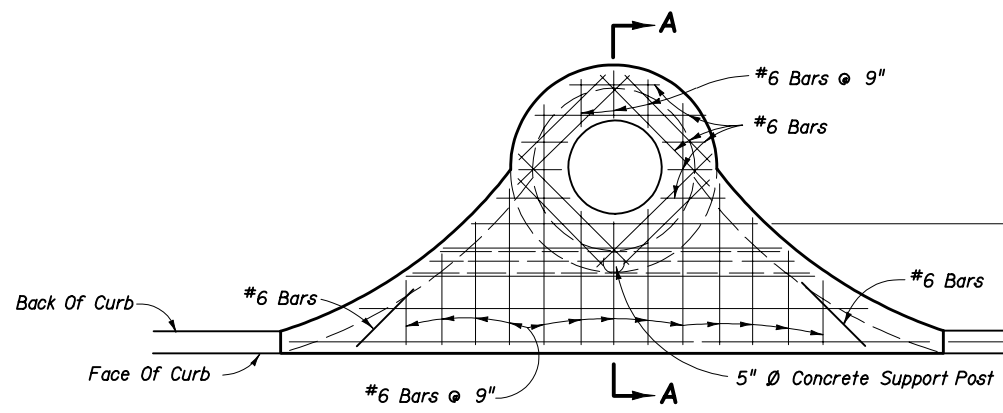
PLAN (INLET TYPE 2 SYMMETRICAL ABOUT €)



PLAN (INLET TYPE 4 SYMMETRICAL ABOUT €)

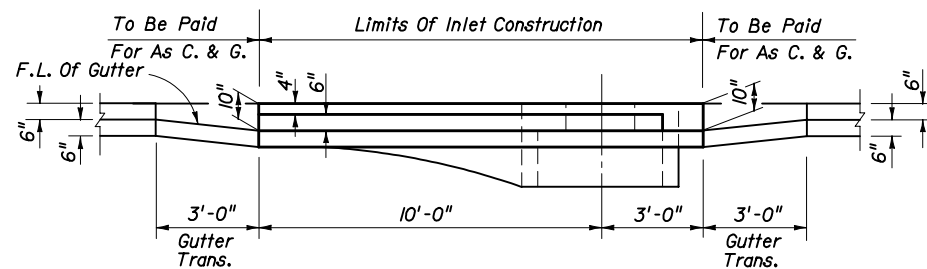


INLETS TYPES 1 AND 3

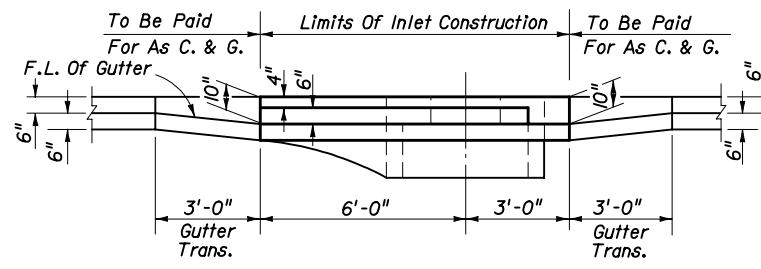


INLETS TYPES 2 AND 4

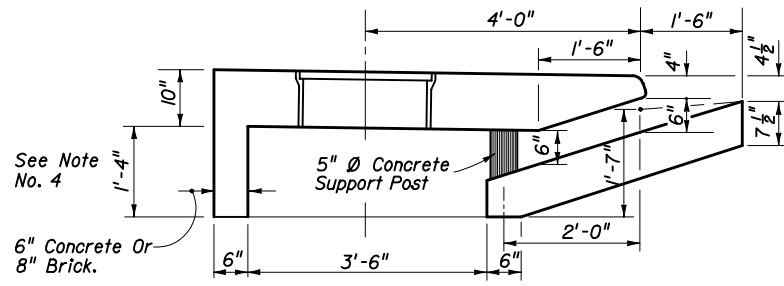
**SLAB REINFORCING**



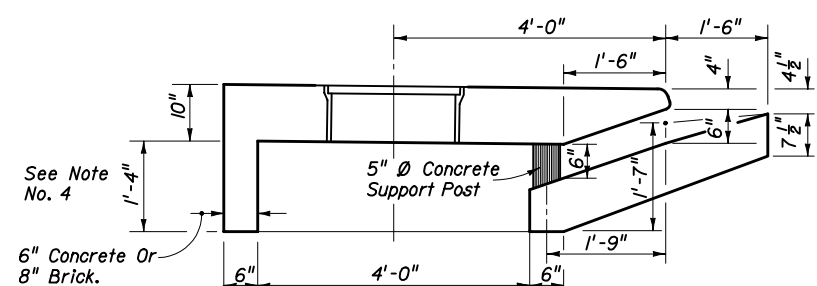
SECTION BB (INLET TYPE 2 SYMMETRICAL ABOUT €)



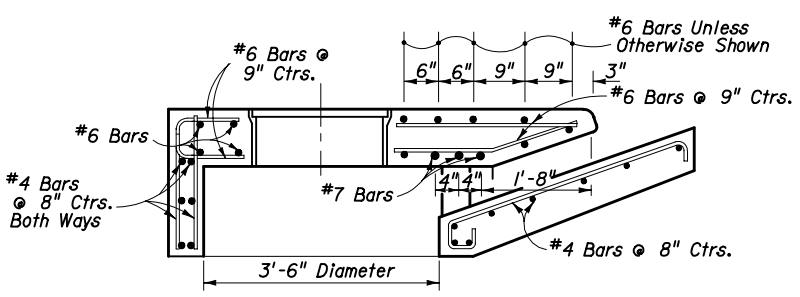
SECTION BB (INLET TYPE 4 SYMMETRICAL ABOUT €)



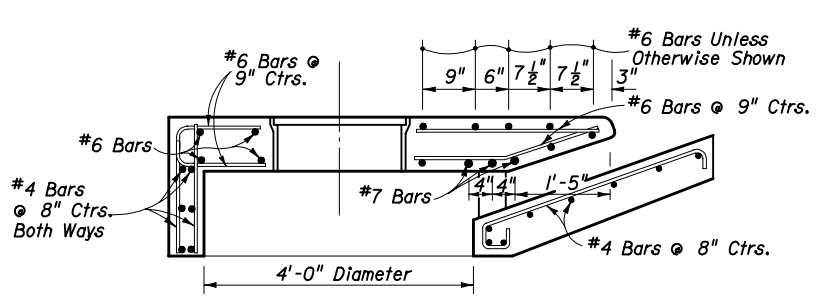
DIMENSIONAL SECTION  
**INLETS TYPES 1 AND 2**



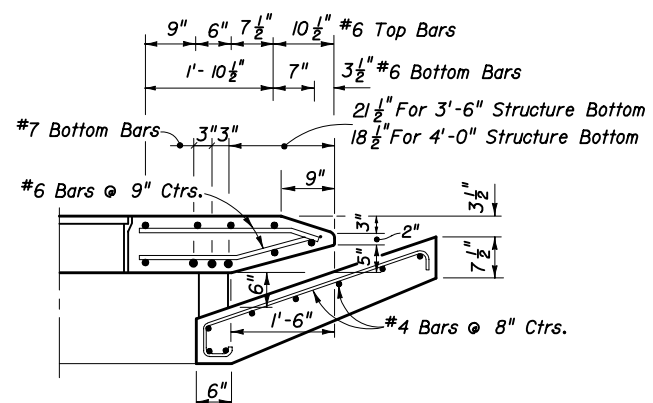
DIMENSIONAL SECTION  
**INLETS TYPES 3 AND 4**



REINFORCING SECTION  
3'-6" DIA. STRUCTURE BOTTOM (SECTION AA)



REINFORCING SECTION  
4'-0" DIA. STRUCTURE BOTTOM (SECTION AA)



DIMENSION & REINFORCING HALF SECTION  
TYPES A & E CURB (HALF SECTION AA)  
(TYPE E GUTTER SHOWN)

**GENERAL NOTES**

1. The finished grade and slope of the inlet tops are to conform with the finished cross slope and grade of the proposed sidewalk and/or border.
2. When inlets are to be constructed on a curve, refer to the plans to determine the radius and, where necessary, modify the inlet details accordingly. Bend steel when necessary.
3. All steel in inlet top shall have 1/2" minimum cover unless otherwise shown. Inlet tops shall be either cast-in-place or precast concrete.
4. The rear wall portion of inlet tops Types 1, 2, 3 & 4 may be constructed with brick. Dowels to top slab required.
5. For supplemental details see Index No. 201.
6. Only round concrete support post will be acceptable.
7. These inlets are designed for use with standard curb and gutter Type E and Type F. Locate inlet outside of pedestrian crosswalks.
8. For structure bottoms see Index No. 200.
9. Inlet to be paid for under the contract unit price for Inlets (Curb) (Type \_\_\_), Each.

STATE OF FLORIDA DEPARTMENT OF TRANSPORTATION				
<b>CURB INLET TOPS TYPES 1, 2, 3, &amp; 4</b>				
Names	Dates	Approved By		
Designed By		State Drainage Engineer		
Drawn By		Revision	Sheet No.	Index No.
Checked By		04	1 of 1	210

**TRANSVERSE SECTIONS FOR INLETS TYPES 1, 2, 3 & 4**