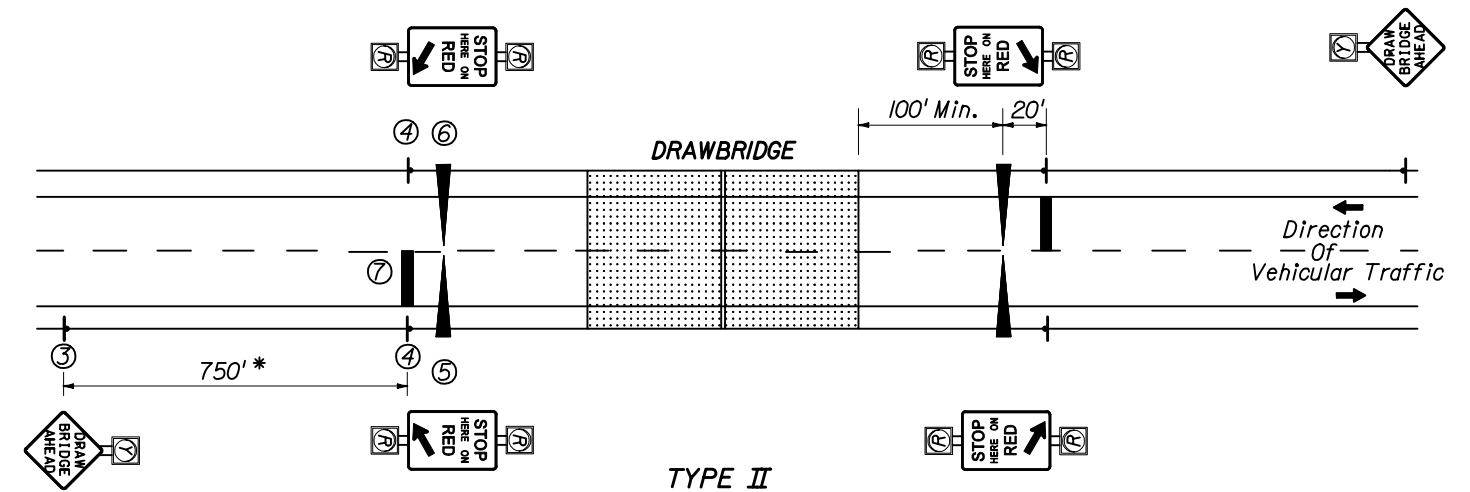
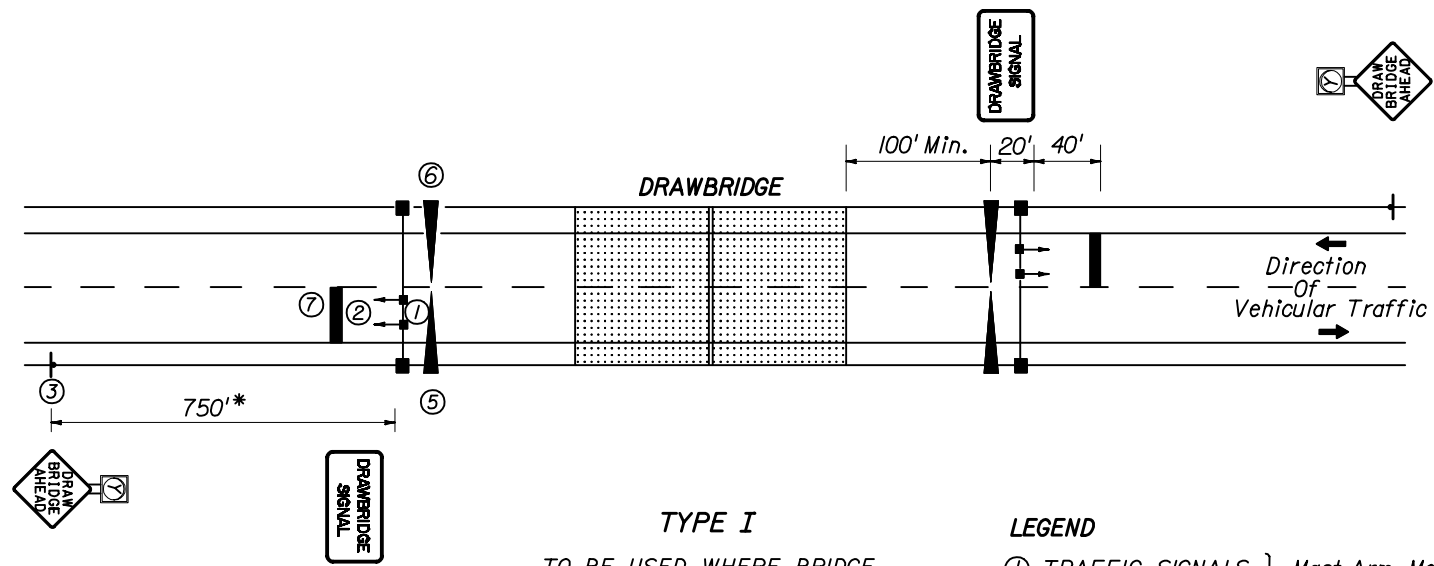


TYPICAL BRIDGE MOUNTS



LEGEND

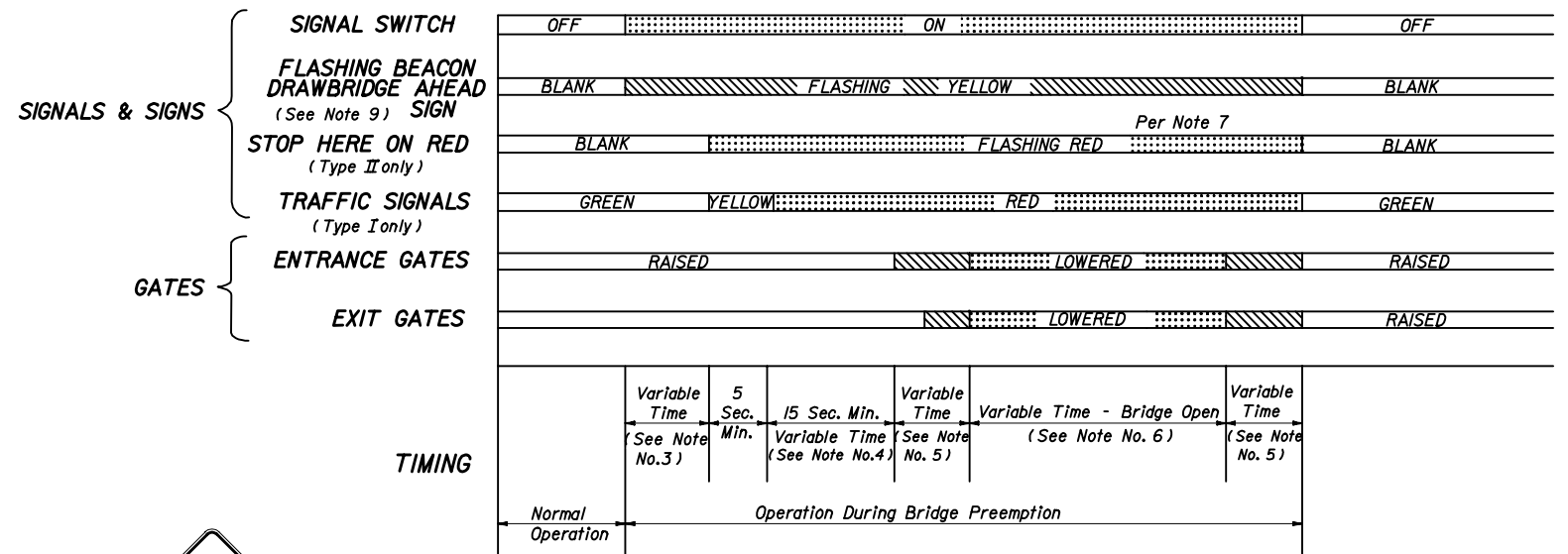
- ① TRAFFIC SIGNALS } Mast Arm Mounted (Off Bridge)
- ② DRAWBRIDGE SIGN } Monotube Support Mounted (On Bridge)
- ③ DRAWBRIDGE AHEAD SIGN WITH YELLOW FLASHING BEACON } Ground Mounted
- ④ STOP HERE ON RED SIGN WITH RED FLASHING BEACONS } Ground Mounted
- ⑤ ENTRANCE GATE
- ⑥ EXIT GATE
- ⑦ 24" THERMOPLASTIC STOP BAR

* Field conditions may require adjustment of this standard distance.

NOTES:

1. A bypass switch shall be installed to override each timing interval in case of a malfunction.
2. "STOP HERE ON RED" is omitted in Type I operation and "TRAFFIC SIGNALS" are omitted in Type II operation.
3. The time between beginning of flashing yellow on "Drawbridge Ahead" sign and the clearance of traffic signal to red, or beginning of flashing red should not be less than the travel time of a passenger car, from the sign location to the stop line, traveling at the 85 percentile approach speed.
4. Beginning of operation of drawbridge gates shall not be less than 15 seconds after steady red or 20 seconds after flashing red (Actual time may be determined by the bridge tender.)
5. Time of gate lowering and raising is dependent upon gate type.
6. Time of bridge opening is determined by the bridge tender.
7. Each gate shall be operated by a separate switch.
8. On each approach (Type II), all four red signals shall be on the same two circuit flashers, with the two top signals on one circuit, and the two bottom signals on the alternately flashing circuit.
9. A Drawbridge Ahead sign is required for both types of signal operation, However a flashing beacon shall be added to the sign when physical conditions prevent a driver traveling at the 85% approach speed from having continuous view of at least one signal indication for approximately 10 seconds.
10. Requirements on gate installation are contained in Section 4E-14 through 4E-17 of the Manual on Uniform Traffic Control Devices.
11. "In accordance with Traffic Engineering Manual (Topic Number 750-000-005) Section 2.1, SLIPPERY WHEN WET SIGNS shall be placed in advance of all MOVABLE and NON-MOVABLE STEEL DECK BRIDGES."

SEQUENCE CHART



W8-5
SLIPPERY WHEN WET SIGN
See Note 11.

STATE OF FLORIDA DEPARTMENT OF TRANSPORTATION

TRAFFIC CONTROL DEVICES FOR MOVABLE SPAN BRIDGE SIGNALS

Designed By	Names	Dates	Approved By		
Drawn By		4-75	 State Traffic Standards Engineer		
Checked By		4-75			
	Revision	04	Sheet No.	1 of 3	Index No.
					17890

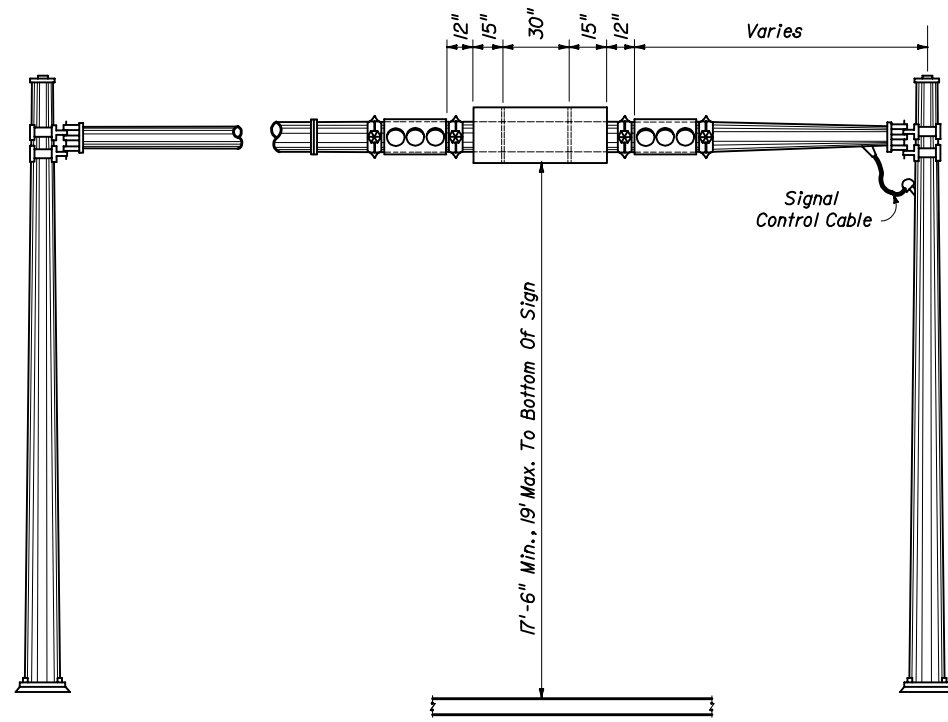
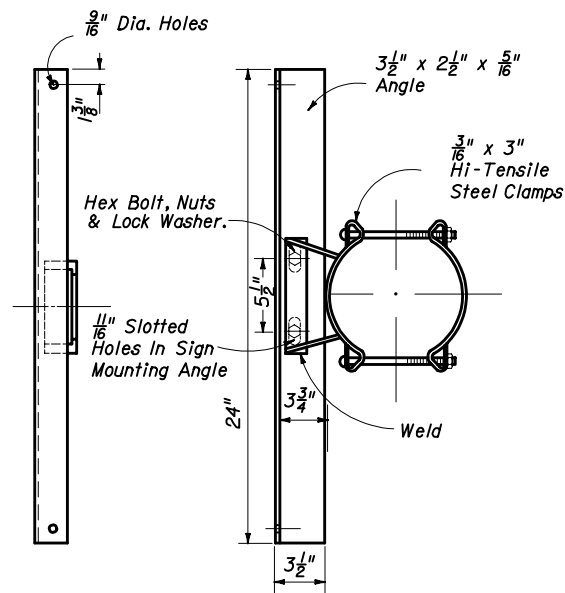


FIGURE - A

MONOTUBE SUPPORT MOUNTING



SIGN PANEL MOUNTING ASSEMBLY

FIGURE - B

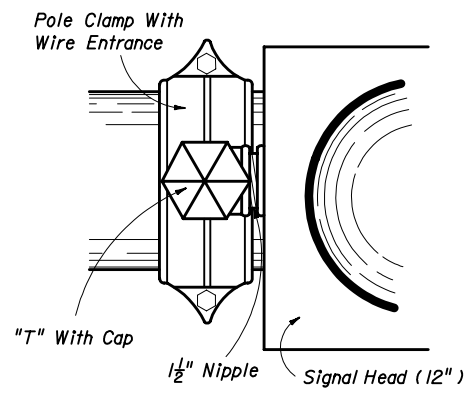


FIGURE - C

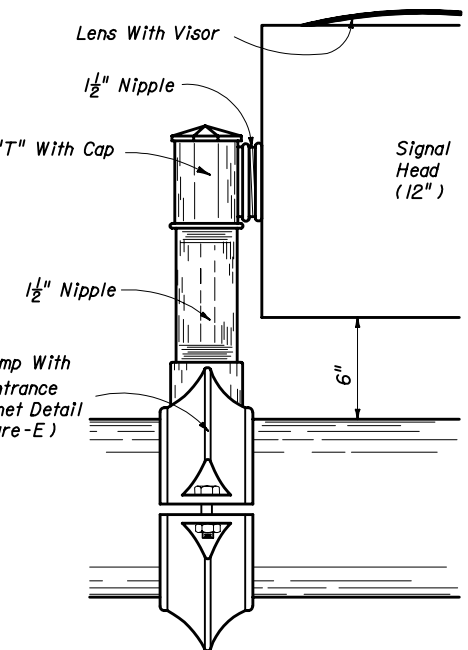


FIGURE - D

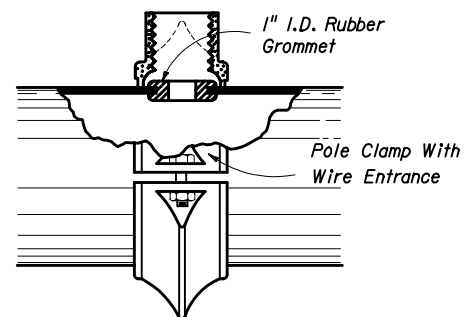


FIGURE - E

SIGNAL HEAD MOUNTING ASSEMBLY

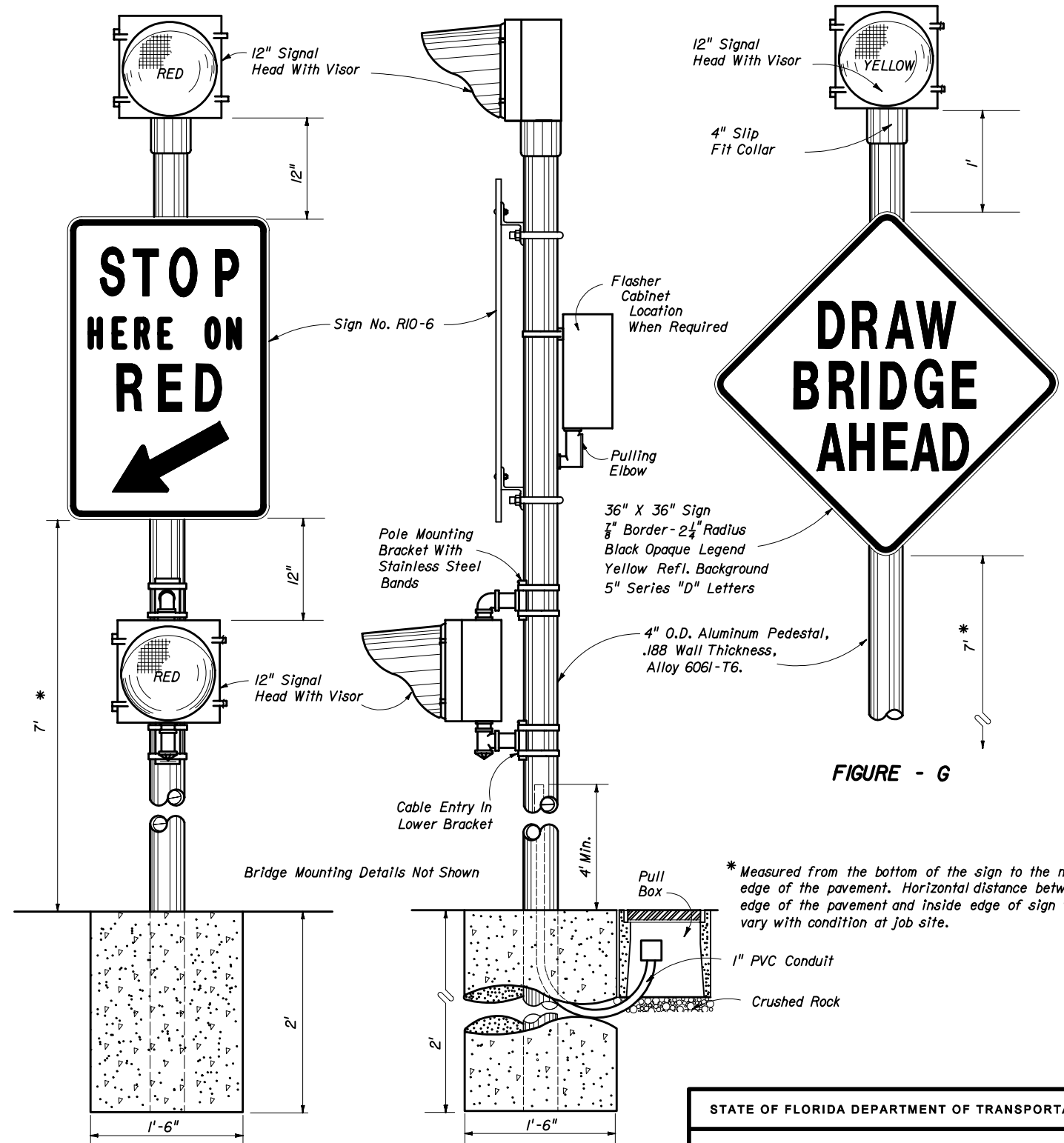
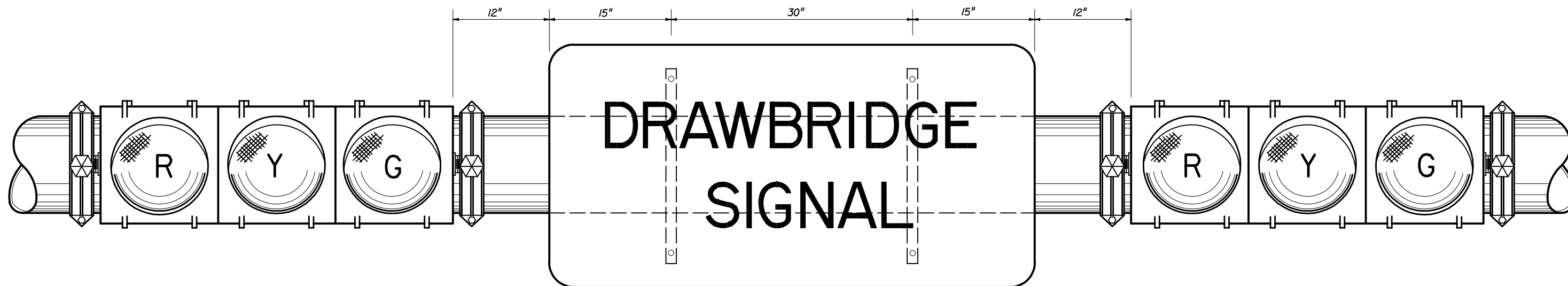


FIGURE - F

STATE OF FLORIDA DEPARTMENT OF TRANSPORTATION

TRAFFIC CONTROL DEVICES FOR MOVABLE SPAN BRIDGE SIGNALS

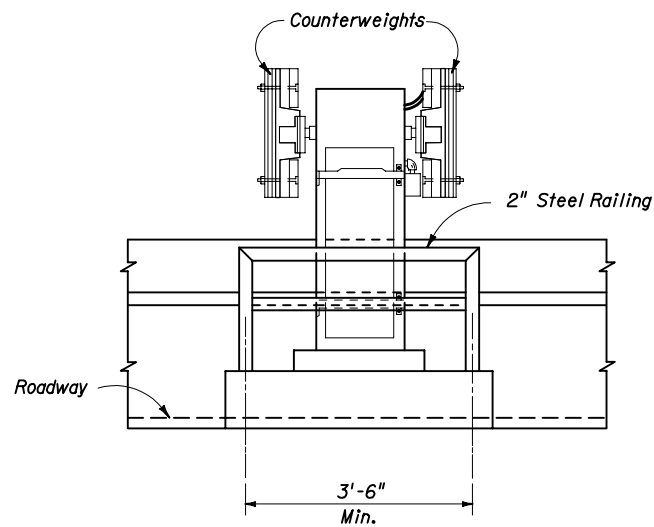
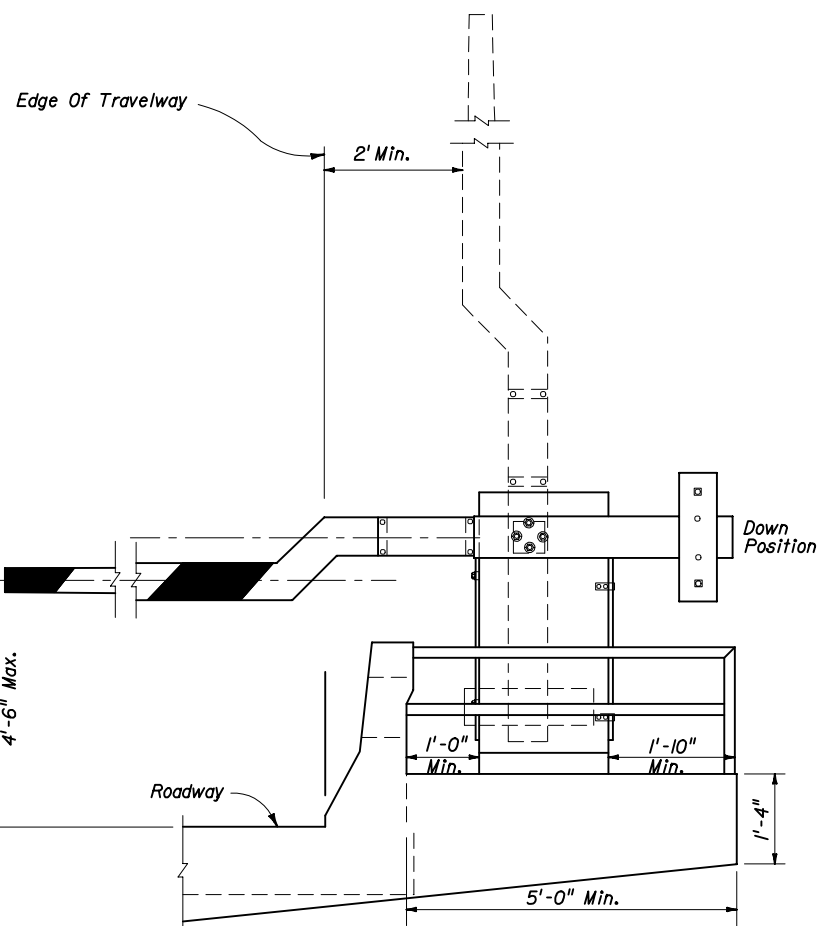
Names	Dates	Approved By		
Designed By	4-75	 State Traffic Standards Engineer		
Drawn By				
Checked By	4-75	Revision	Sheet No.	Index No.
		04	2 of 3	17890



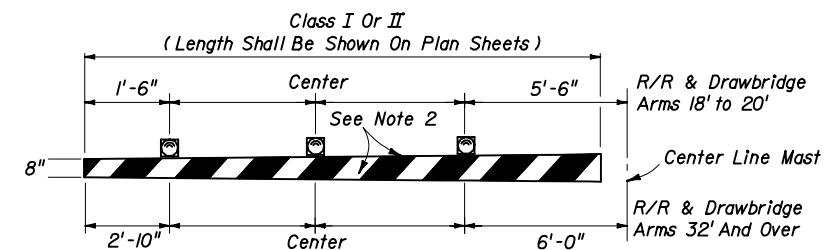
5' x 2'-6"
 2" Border-4" Radius
 6" Series "D" Letters

BLACK OPAQUE LEGEND AND BORDER ON REFLECTORIZED YELLOW BACKGROUND

TO BE USED WITH TYPE I OPERATION, AS SHOWN
 ON PREVIOUS SHEET
MONOTUBE SUPPORT MOUNTING



GATE & ARM DETAIL



- Note :
- 12 volt flashing red lights shall be mounted on gate arm and shall operate in the flashing mode only when gate arm is in the lower position or in the process of being lowered. The number of lights shall vary accordingly to length of the gate arm.
 - 16" alternate diagonal fully reflectorized red and white stripes.

TYPICAL LAMP PLACEMENT

STATE OF FLORIDA DEPARTMENT OF TRANSPORTATION				
TRAFFIC CONTROL DEVICES FOR MOVABLE SPAN BRIDGE SIGNALS				
Designed By	Names	Dates	Approved By <i>Clark A. Smith</i> State Traffic Standards Engineer	
Drawn By			Revision	Sheet No. 3 of 3
Checked By			00	Index No. 17890