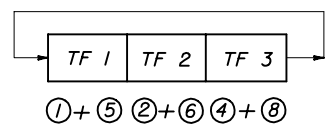
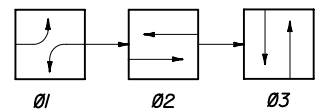
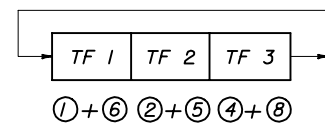
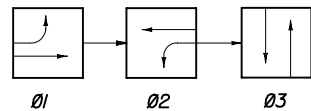


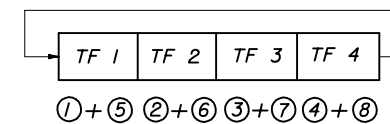
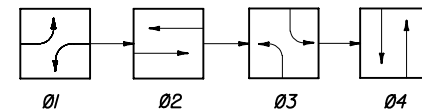
SOP 1



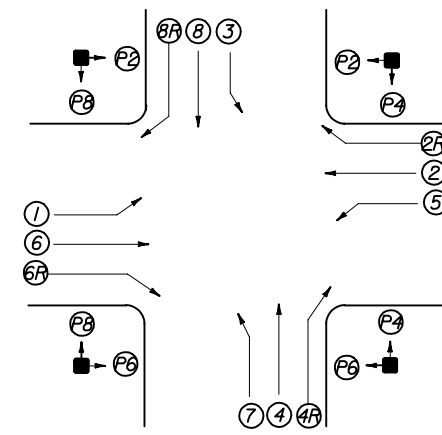
SOP 2



SOP 3

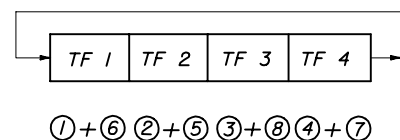
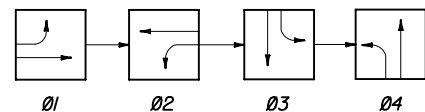


SOP 4

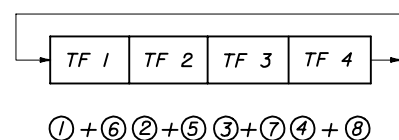
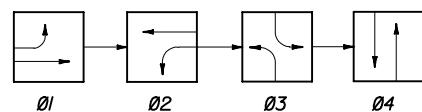


SIGNALIZED INTERSECTION
 Vehicle movements & signal head number assignments are not directionally oriented but shall maintain their relative orientation about the intersection (I.E. movements 7 and 4 are always to the right of movements 1 and 6 etc.)

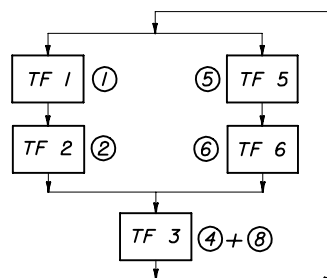
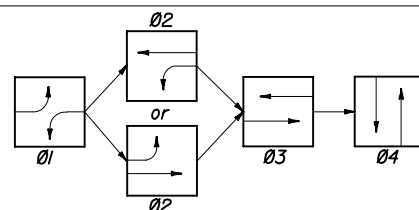
- LEGEND**
- (X) Vehicle Movement Number
 - (P) Pedestrian Movement Number
 - TF Timing Function Number
 - Ø Phase Number
 - ↔ Green Arrow (Left or Right)
 - ↔ Red Arrow
 - ↔ Yellow Arrow



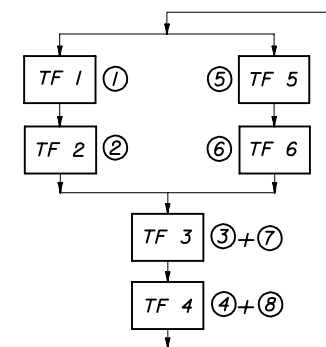
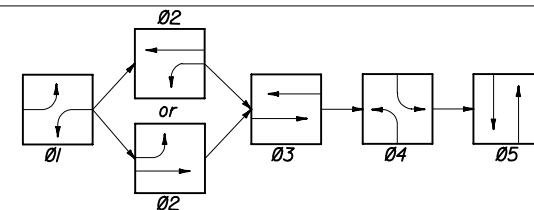
SOP 5



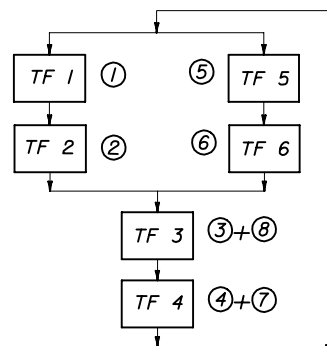
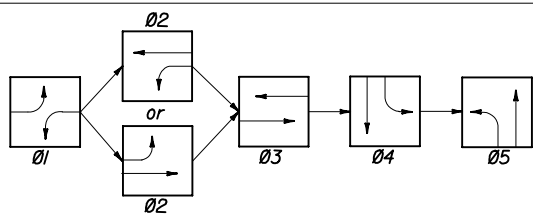
SOP 6



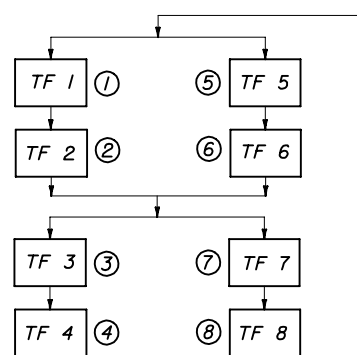
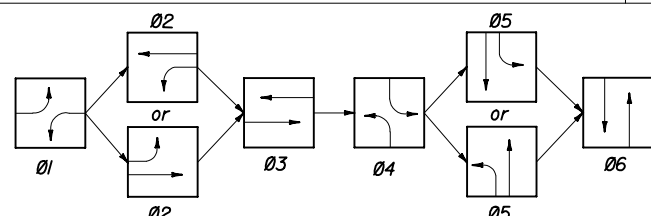
SOP 7



SOP 8



SOP 9



SOP 10

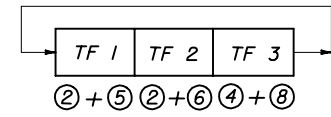
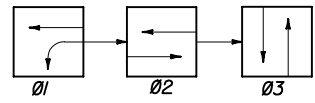
SIGNAL CLEARANCE TABLE
 (Blank Indicates No Clearance Required)

From \ To		SIGNAL INDICATIONS						
		R	R	G	G	G	WALK	DONT WALK
SIGNAL INDICATIONS	R			Y	Y	Y		
	R			Y	Y	Y		
	G				Y			
	G							
	G							
	WALK							
	DONT WALK							Flash DONT WALK
	DONT WALK							

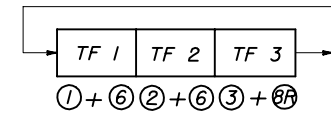
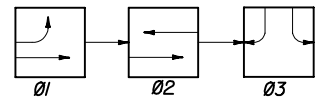
STATE OF FLORIDA DEPARTMENT OF TRANSPORTATION

STANDARD SIGNAL OPERATING PLANS

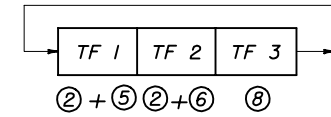
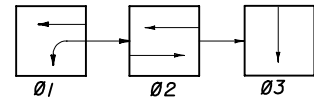
Names	Dates	Approved By
Designed By	4-79	<i>Charles A. Smith</i> State Traffic Standards Engineer
Drawn By		Revision
Checked By		Sheet No. 1 of 2
		Index No. 17870



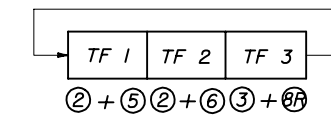
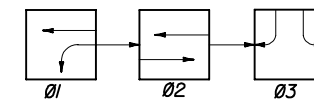
SOP 11



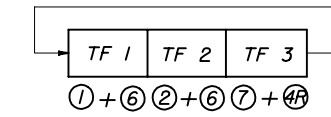
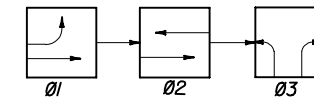
SOP 12



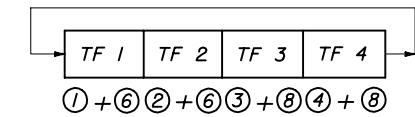
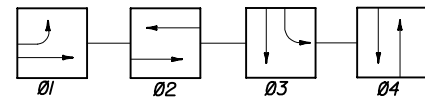
SOP 13
(ONE-WAY STREET INTERSECTION)



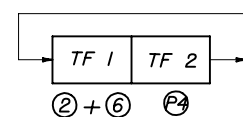
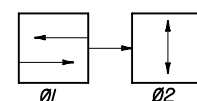
SOP 14
(DIAMOND INTERCHANGE OPERATION)



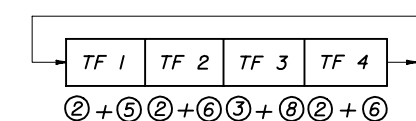
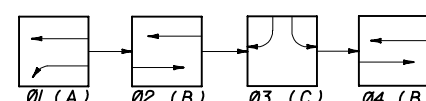
SOP 15
(DIAMOND INTERCHANGE OPERATION)



SOP 16

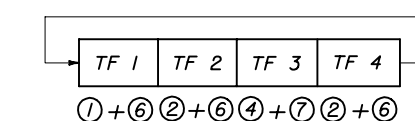
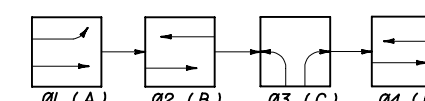


SOP 17
(MID-BLOCK)



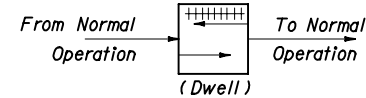
NOTE:
Only Ø2 Or Ø4 Used, Not Both To Obtain
ABC, Or ACB Operation.

SOP 18
(DIAMOND INTERCHANGE OPERATIONS)

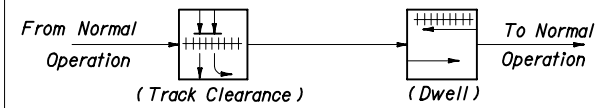


NOTE:
Only Ø2 Or Ø4 Used, Not Both To Obtain
ABC, Or ACB Operation.

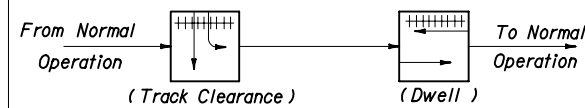
SOP 19
(DIAMOND INTERCHANGE OPERATIONS)



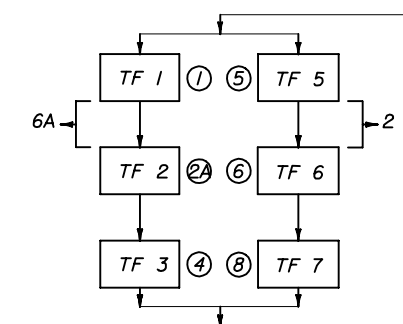
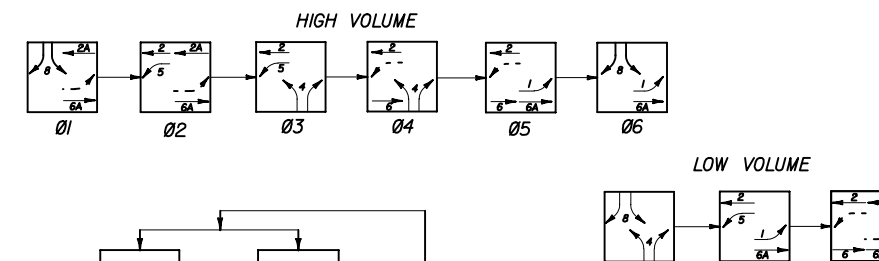
POP 1



POP 2



POP 3



SOP 20
(DIAMOND INTERCHANGE OPERATIONS)

STATE OF FLORIDA DEPARTMENT OF TRANSPORTATION

**STANDARD SIGNAL
OPERATING PLANS**

Names	Dates	Approved By	
Designed By	9-79	State Traffic Standards Engineer	
Drawn By		Revision	Sheet No.
Checked By		00	2 of 2
			17870