

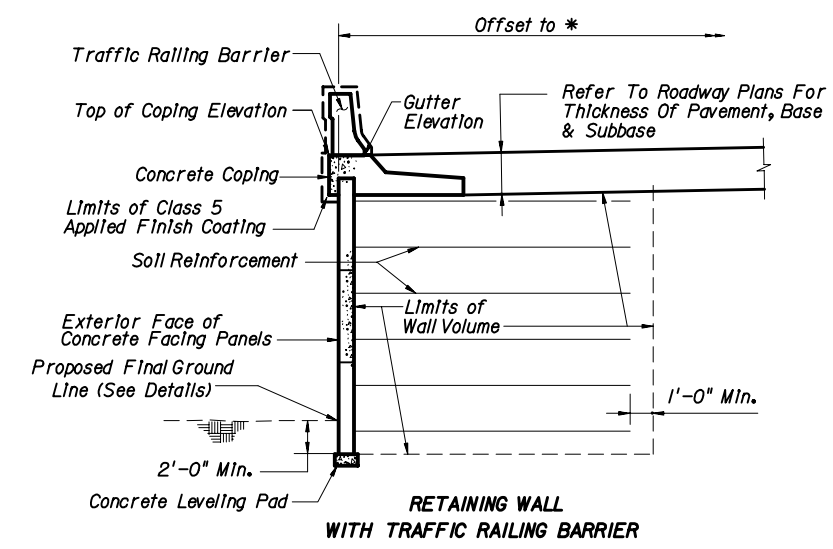
**NOTES**

- Walls shall be constructed in accordance with Section 548 and the wall suppliers instructions.
- All exposed surfaces of cast-in-place concrete shall receive a Class 5 Applied Finish Coating in accordance with Construction Specifications Section 400. Refer to Typical Wall Sections and the following notes for limits of applied finish:
  - The inside, backside and top of Traffic Railing Barriers and Pedestrian/Bicycle Railing Barriers.
  - Exposed surfaces of coping on top of retaining wall.
- Other coatings, colors or textures shall be applied as required by the Contract Documents.
- Piles within the wall volume shall be driven prior to construction of the retaining wall. The portion of the pile within the wall volume shall be wrapped with polyethylene sheeting in accordance with Section 459.
- A structural extension of the connection of the wall panel to the soil reinforcement shall be used whenever necessary to avoid the cutting or excessive skewing (greater than 15 degrees) of the soil reinforcements around obstructions (i. e. piles, pipes, etc.).
- For wall systems utilizing footings, the top of footing elevation is the same elevation as top of leveling pad.
- Steps in leveling pads shall occur at panel interfaces. Panels shall not cantilever past the end of the leveling pad.
- No cutting of soil reinforcement grids allowed unless shown on shop drawings and approved by the Engineer.

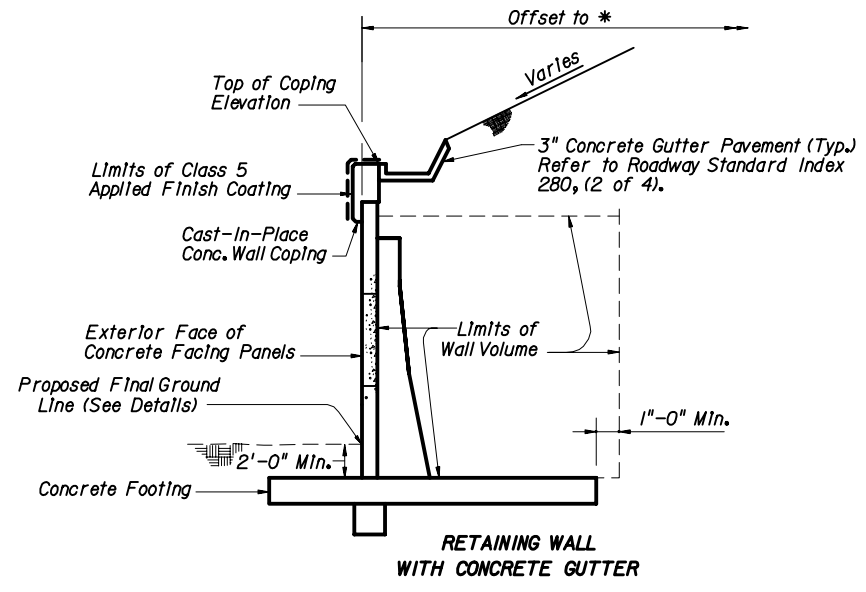
**SHOP DRAWING REQUIREMENTS**

The successful bidder shall submit the final design of the wall for review as shop drawings. The Shop Drawings shall include detailed design computations and all details, dimensions and quantities necessary to construct the wall. The design and fully detailed plans shall be prepared to Department standards current at time of bid and shall include, but not be limited to, presentation of required information as follows:

- Provide an elevation view of the wall indicating elevations at top of wall at begin and end wall stations, at all breaks in vertical alignment and at whole stations and 30 foot increments. Show elevations at top of leveling pad, bottom of footings, locations of all steps in leveling pad, panel designations, and length, size and designation of soil reinforcement in elevation view. Indicate location of the proposed final ground line.
- Provide a plan view detailing the horizontal alignment and offsets from the horizontal control lines to the exterior face of the wall.
- Show in the plan and elevation all utilities, sign supports, light pole pilasters, drainage structures, drainage pipes, etc. that affect the walls. Locate on the plan all piles within the wall volume including those for future widening as shown on Foundation Layout drawings.
- Provide general notes and design parameters on the shop drawings, including design soil characteristics, minimum factors of safety, allowable material stresses and all other pertinent notes required for the construction of the walls. Provide the allowable and maximum actual bearing pressure for each wall height increment.
- Show the limits of the wall volume.
- Show all details of each concrete panel, slip joint and all other concrete elements incorporated in the wall, including reinforcing bar size and spacing, reinforcing bar bending details and details of all embedments.
- Show all details of leveling pads and footings, including steps in leveling pads.
- Show all details for construction of wall around obstructions. Show details for placement of soil reinforcement at acute corners and at interface with temporary walls.
- Show all details addressing conflicts between soil reinforcement, concrete facing panels and embedments in the wall volume. Provide full details of connections of barriers, coping, sign supports, light pole pilasters, acute corners, etc.
- Show all details where walls of different types intersect/influence one another.
- Provide fully detailed design calculations for each wall height increment utilized in the shop drawings. The submitted plans and design calculations shall be signed and sealed by a Professional Engineer registered in the State of Florida.

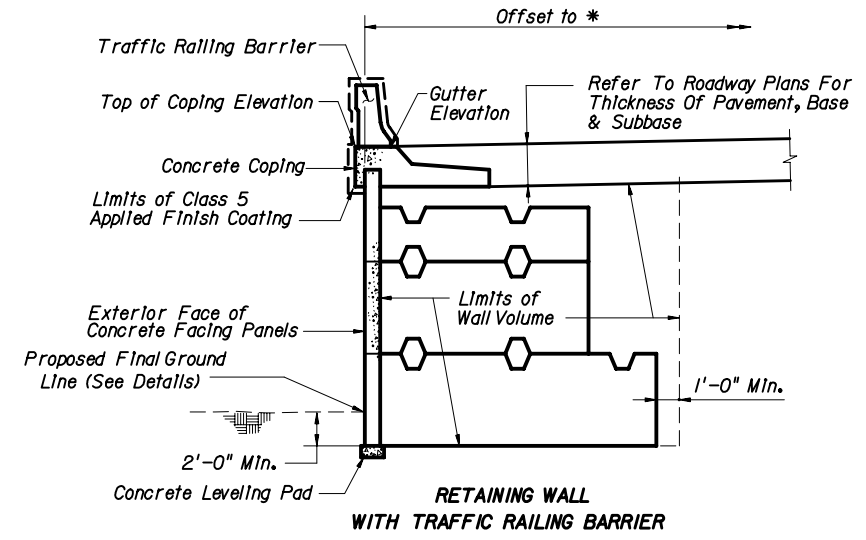


**TYPICAL WALL SECTION - MSE SYSTEM (N.T.S.)**

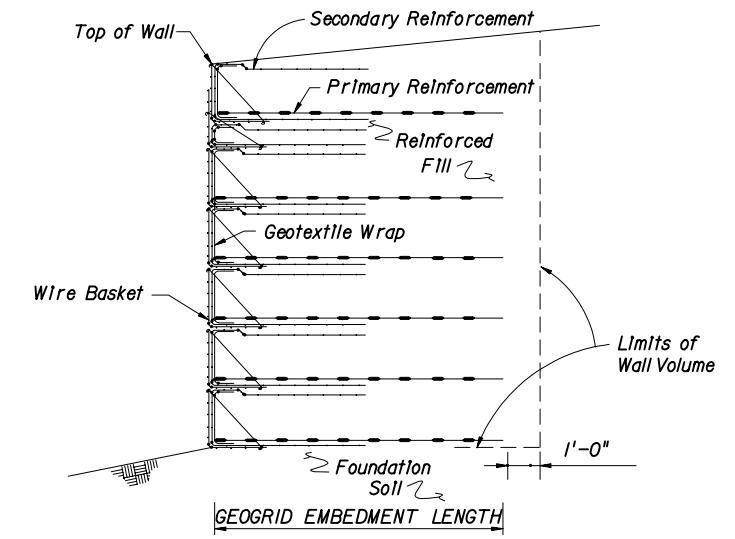


**TYPICAL WALL SECTION - COUNTERFORT SYSTEM (N.T.S.)**

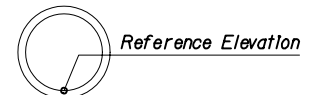
\* Insert control line designation i. e. C, B, etc.



**TYPICAL WALL SECTION - CONCRETE STEM SYSTEM (N.T.S.)**



**TEMPORARY WALL - TYPICAL CROSS-SECTION (N.T.S.)**



**NOTE:**  
See Roadway plans for complete drainage details.

**DRAINAGE PIPE DETAIL**

INTERIM STANDARD IN ENGLISH UNITS  
APPLICABLE TO DESIGN STANDARDS  
BOOKLET PUBLISHED IN ENGLISH UNITS.

Date: 06-30-03

STATE OF FLORIDA DEPARTMENT OF TRANSPORTATION			
<b>RETAINING WALL SYSTEM GENERAL NOTES</b>			
INTERIM STANDARD		APPROVED BY	
THIS INDEX IS A REPLACEMENT FOR INDEX NO. 5000 OF THE DESIGN STANDARDS, BOOKLET DATED JANUARY 2002.			
REVISION NO.	SHEET NO.	INDEX NO.	
	1 of 1	05000	