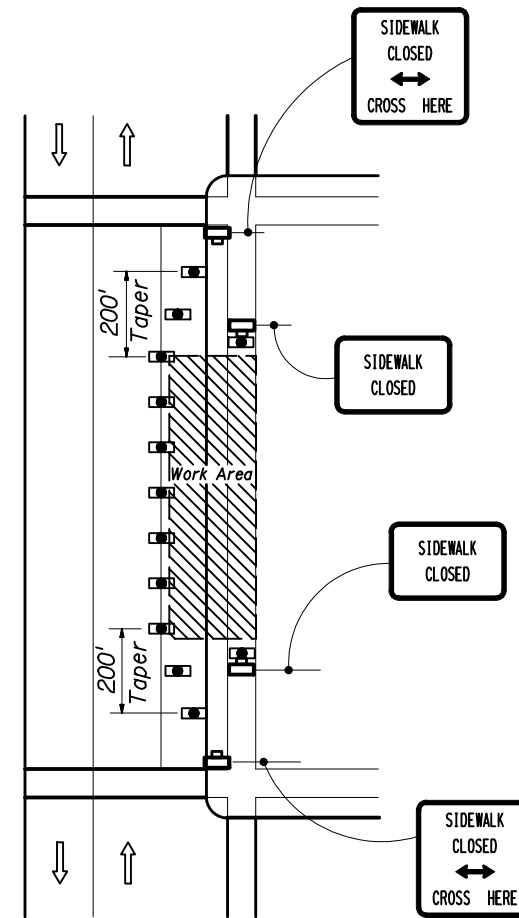
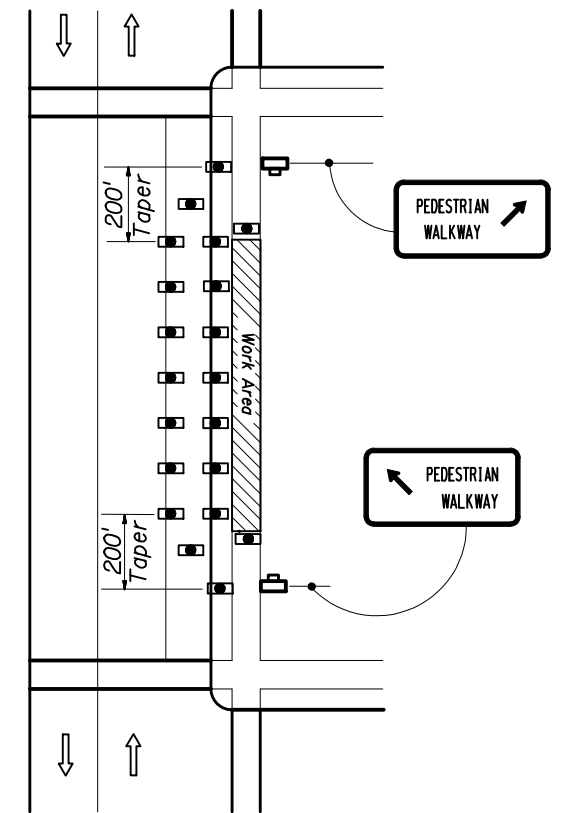


**CORNER SIDEWALK CLOSURE WITH TEMPORARY CROSSWALKS**



**MID-BLOCK SIDEWALK CLOSURE**



**MID-BLOCK SIDEWALK CLOSURE WITH TEMPORARY WALKWAY**

**GENERAL NOTES**

1. Arrows denote direction of traffic only and do not reflect pavement markings.
2. Only the signs controlling pedestrian flows are shown. Other work zone signs will be needed to control traffic on the streets.
3. For spacing of traffic control devices and general TCZ requirements refer to Index No. 600. Maximum spacing between barricades, vertical panels, drums or tubular markers shall not be greater than 25'.
4. Street lighting should be considered.
5. For nighttime closures use Type A flashing warning lights on barricades supporting signs and closing sidewalks. Use Type C steady-burn lights on channelizing devices separating the work area from vehicular traffic.
6. Pedestrian traffic signal display controlling closed crosswalks shall be covered or deactivated.

7. Temporary walkways shall be a minimum of 4' wide and kept free of any obstructions and hazards such as holes, debris, mud, construction equipment, stored materials and etc. ( For details see Index 600 )
8. Post Mounted Signs located near or adjacent to a sidewalk shall have a 7' minimum clearance from the bottom of sign to the sidewalk.
9. When construction activities involve sidewalks on both sides of the street, efforts should be made to stage the construction so that both sidewalks are not out of service at the same time.
10. In the event that sidewalks on both sides of the street are closed, then pedestrians shall be guided around the construction zone.

**SYMBOLS**

- Work Area
- Type I Or Type II Barricade Or Vertical Panel Or Drum ( With Steady Burning Light At Night Only ). ( Tubular Markers May Be Used During Daylight Only. Cones May Be Used -See Index 600 ).
- Work Zone Sign

**TYPICAL APPLICATIONS**

- Sidewalk Repair
- Pavement Widening
- Utility Work

**CONDITIONS**

**WHERE ANY VEHICLE, EQUIPMENT WORKERS OR THEIR ACTIVITIES ENCROACH ON THE SIDEWALK FOR A PERIOD OF MORE THAN 60 MINUTES**

STATE OF FLORIDA DEPARTMENT OF TRANSPORTATION					
TRAFFIC CONTROL THROUGH WORK ZONES					
<b>PEDESTRIAN CONTROL FOR CLOSURE OF SIDEWALKS</b>					
Designed By		Dates	Approved By		
Drawn By		7/93	Revision	Sheet No.	Index No.
Checked By		7/93	00	1 of 1	660