

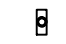




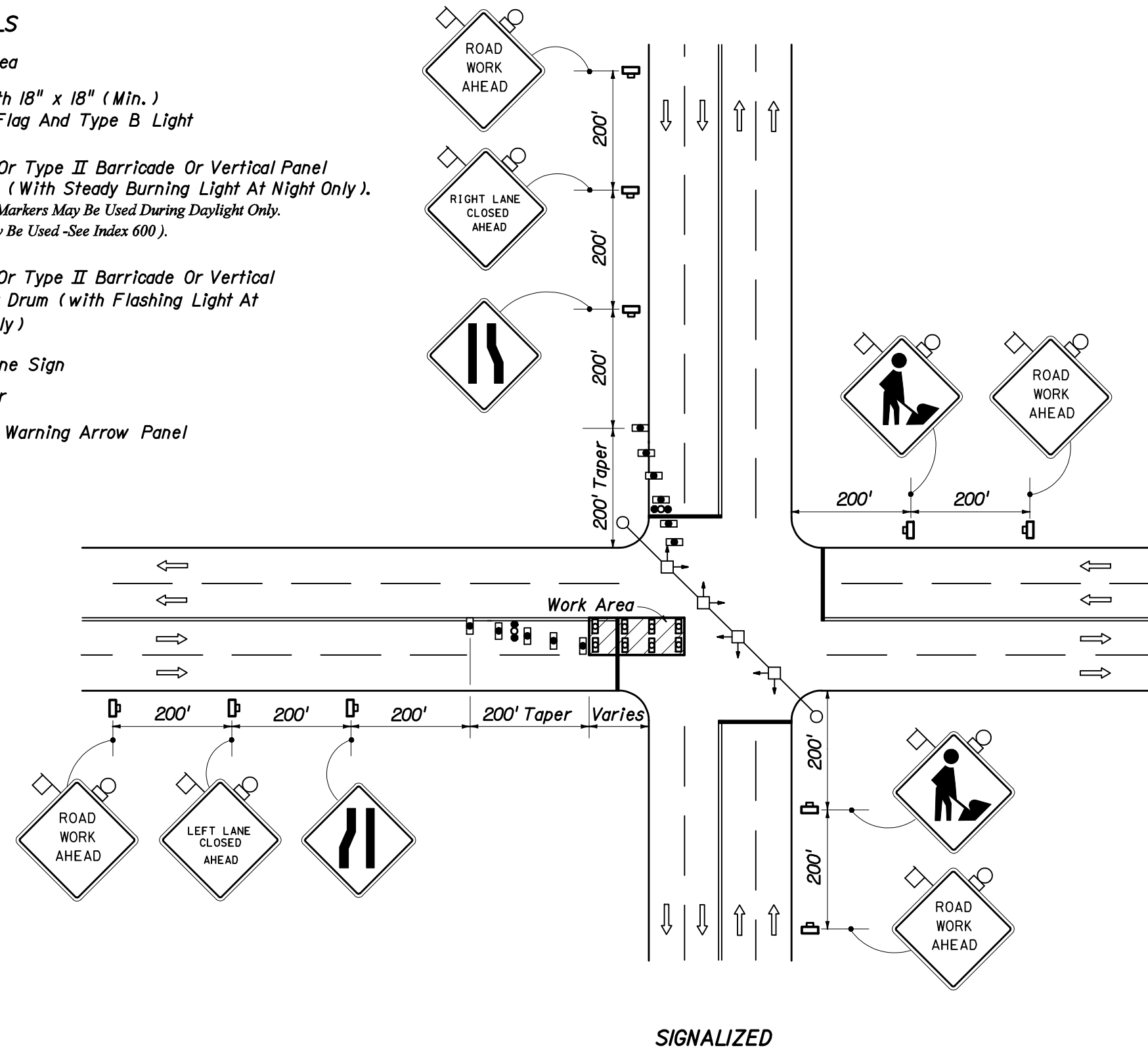


SYMBOLS

-  Work Area
-  Sign With 18" x 18" (Min.) Orange Flag And Type B Light
-  Type I Or Type II Barricade Or Vertical Panel Or Drum (With Steady Burning Light At Night Only). (Tubular Markers May Be Used During Daylight Only. Cones May Be Used -See Index 600).
-  Type I Or Type II Barricade Or Vertical Panel Or Drum (with Flashing Light At Night Only)
-  Work Zone Sign
-  Stop Bar
-  Advance Warning Arrow Panel



SIGNALIZED

GENERAL NOTES

1. All vehicles, equipment, workers (except flaggers) and their activities are forbidden in lane and intersection areas reserved for traffic.
2. For work operations of 60 minutes or less see Index No. 607.
3. The first two warning signs shall have an 18" x 18" (min.) orange flag and a Type B light attached and operating at all times. Mesh signs may be used for (Daylight Only) operations Type B Lights and Orange Flags are not required.
4. All signs shall be post mounted if closure time exceeds 12 hours.
5. The WORKERS legend sign may be substituted for the symbol sign.
6. Dual signs are required for divided roadways.
7. Arrows denote direction of traffic only and do not reflect pavement markings.
8. Maximum spacing between barricades, vertical panels, cones, tubular markers and drums shall be not greater than 25'.
9. Temporary signal phasing modifications are to be approved by the District Traffic Operations Engineer prior to the beginning of work.
10. Longitudinal dimensions are to be adjusted to fit field conditions. See Index No. 600.
11. For general TCZ requirements and additional information refer to Index No. 600.

TYPICAL APPLICATIONS

- Utility Work
- Pavement Repair
- Structure Adjustments

CONDITIONS

WHERE ANY VEHICLE, EQUIPMENT, WORKERS OR THEIR ACTIVITIES ENCROACH ON THE PAVEMENT REQUIRING THE CLOSURE OF AT LEAST ONE MEDIAN TRAFFIC LANE FOR A PERIOD OF MORE THAN 60 MINUTES

STATE OF FLORIDA DEPARTMENT OF TRANSPORTATION				
TRAFFIC CONTROL THROUGH WORK ZONES				
MULTILANE, TWO-WAY • URBAN				
DIVIDED OR UNDIVIDED				
DAY OR NIGHT OPERATIONS				
	Names	Dates	Approved By	
Designed By		12/87	<i>Samuel D. Milk</i> Roadway Design Engineer	
Drawn By		12/87	Revision	Sheet No.
Checked By		12/87	00	1 of 1
				Index No. 622