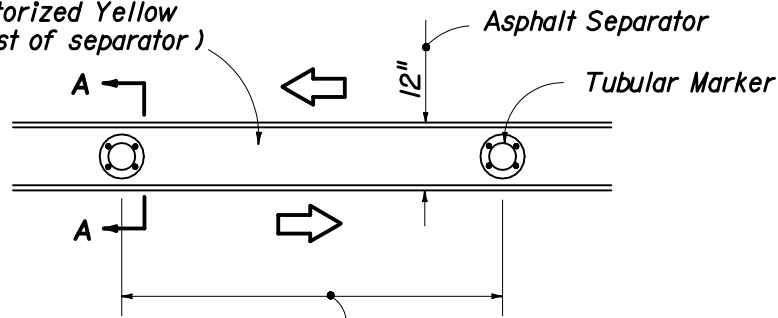


Entire Separator Shall Be Painted Reflectorized Yellow (included in cost of separator)



Based On Speed Limit As Follows:
15' Up To 25 MPH; 30' For 30 - 40 MPH;
50' For 45 MPH And Greater.

PLAN

- Notes: (a) The tubular marker is to be made of a flexible material or have a flexible joint at the base such that it will not cause damage to vehicles upon impact and will return to its original shape after being struck by a 5000 lb. vehicle at a velocity of 75'/sec.
- (b) The tubular marker shall be orange with two white retroreflective bands.
- (c) The tubular marker may be attached by bituminous adhesive or other methods approved by the Engineer.
- (d) Reflectorized materials shall have a smooth sealed outer surface which will display the same approximate color day and night.
- (e) 12" openings for drainage will be constructed in the separator island every 25' in areas with grades of 1% or less or every 50' in areas with grades over 1% as directed by the Engineer.

DETAIL OF TEMPORARY ASPHALT TRAFFIC SEPARATOR

APPLICATIONS

Scheme 1: Restricted Construction Limits

Scheme 2: Unrestricted Construction Limits And Light To Moderate Traffic

Scheme 3: Unrestricted Construction Limits And Moderate To Heavy Traffic

Where: Construction Limits Are The Outward Beginning Or Ending Of Lane Reductions

Where: Unless A Specific Scheme Is Called For In The Plans, Scheme Selection Shall Be At The Contractors Option And As Approved By The Engineer

CONDITIONS

WHERE ANY VEHICLE, EQUIPMENT, WORKERS OR THEIR ACTIVITIES REQUIRE THE CLOSURE OF ONE ROADWAY AND THE OPPOSING ROADWAY IS CONVERTED TO TEMPORARY TWO-WAY TRAVEL BY WAY OF CROSSOVERS

GENERAL NOTES

- All vehicles, equipment, workers and their activities are restricted at all times to one side of the highway.
- The first two warning signs, each side, shall have a 18" x 18" orange flag and a Type B light attached and operating at all times.
- All signs shall be post mounted.
- TWO-WAY TRAFFIC sign(s) shall be repeated every $\frac{1}{4}$ mile in each direction, throughout the tangent distance (T).
- L (min.) = WS for speeds ≥ 45 mph
 $= \frac{WS^2}{60}$ for speeds ≤ 40 mph
 Where:
 W = Width of lateral transition in feet.
 S = Posted speed limit (mph).
- Where the tangent distance (T) exceeds 250', spacing between Type I or II barricades or vertical panels or drums may be increased to 100' within the limits of the tangent, or post mounted delineators at 50' centers may be substituted for barricades, vertical panels or drums.
- All existing pavement markings within the realignment which conflict with the revised traffic pattern are to be removed and removable pavement markings used for marking new edge lines.
- Arrows denote direction of traffic only and do not reflect pavement markings.
- Longitudinal dimensions are to be adjusted to fit field conditions. See Index No. 600.
- When side roads, cross roads or interchanges are located within the limits for work zone traffic control additional traffic control devices shall be erected in accordance with other applicable TCZ Indexes.
- For general TCZ requirements and additional information refer to Index No. 600.
- The contractor has the option of using temporary traffic separators and tubular type warning devices from the qualified products list in lieu of the temporary asphalt traffic separator and tubular warning device detailed above. Temporary Curb shall not be allowed as a substitute for Temporary Traffic Separator.
- Temporary Traffic Separator shall be paid for under the contract unit price for Maintenance of Traffic, LS, and will include all materials and work necessary to construct, maintain and remove the temporary traffic separator. Any damage to existing pavement caused by the removal of temporary traffic separator shall be satisfactorily repaired and the cost of such repairs are to be included in the cost of Maintenance of Traffic, LS.

SYMBOLS

- Work Area
- Sign With 18" x 18" (Min.) Orange Flag And Type B Light
- Type I Or Type II Barricade Or Vertical Panel Or Drum (With Steady Burning Light At Night Only). (Tubular Markers May Be Used During Daylight Only. Cones May Be Used - See Index 600).
- Work Zone Sign
- Advance Warning Arrow Panel

STATE OF FLORIDA DEPARTMENT OF TRANSPORTATION

TRAFFIC CONTROL THROUGH WORK ZONES

**MULTILANE DIVIDED • RURAL
DAY OR NIGHT OPERATIONS**

Names	Dates	Approved By		
Designed By	12/87			
Drawn By	12/87			
Checked By	12/87	Revision	Sheet No.	Index No.
		02	1 of 2	614

BUFFER LENGTH (FEET)		
Construction Zone Speed MPH	X (ft)	Z (ft)
60-70	560	630
55	360	510
≤ 50	180	380

Type I Or Type II Barricades Or Vertical Panels Or Drums At 50' Centers

Same As Left Side

Required Only When Construction Zone Speed Reduced Below Existing Posted Speed Prior To Construction

Required Only When Construction Zone Speed Reduced Below Existing Posted Speed Prior To Construction

Required Only When Construction Zone Speed Reduced Below Existing Posted Speed Prior To Construction

Where Other Construction Or Maintenance Operations Occur Within 1 mile, Sign(s) To Be Coordinated In Accordance With Index No. 600 (All Schemes)

Required Only When Construction Zone Speed Reduced Below Existing Posted Speed Prior To Construction

Maximum As Called For In The Plans Or As Approved By The Engineer (2L Minimum)

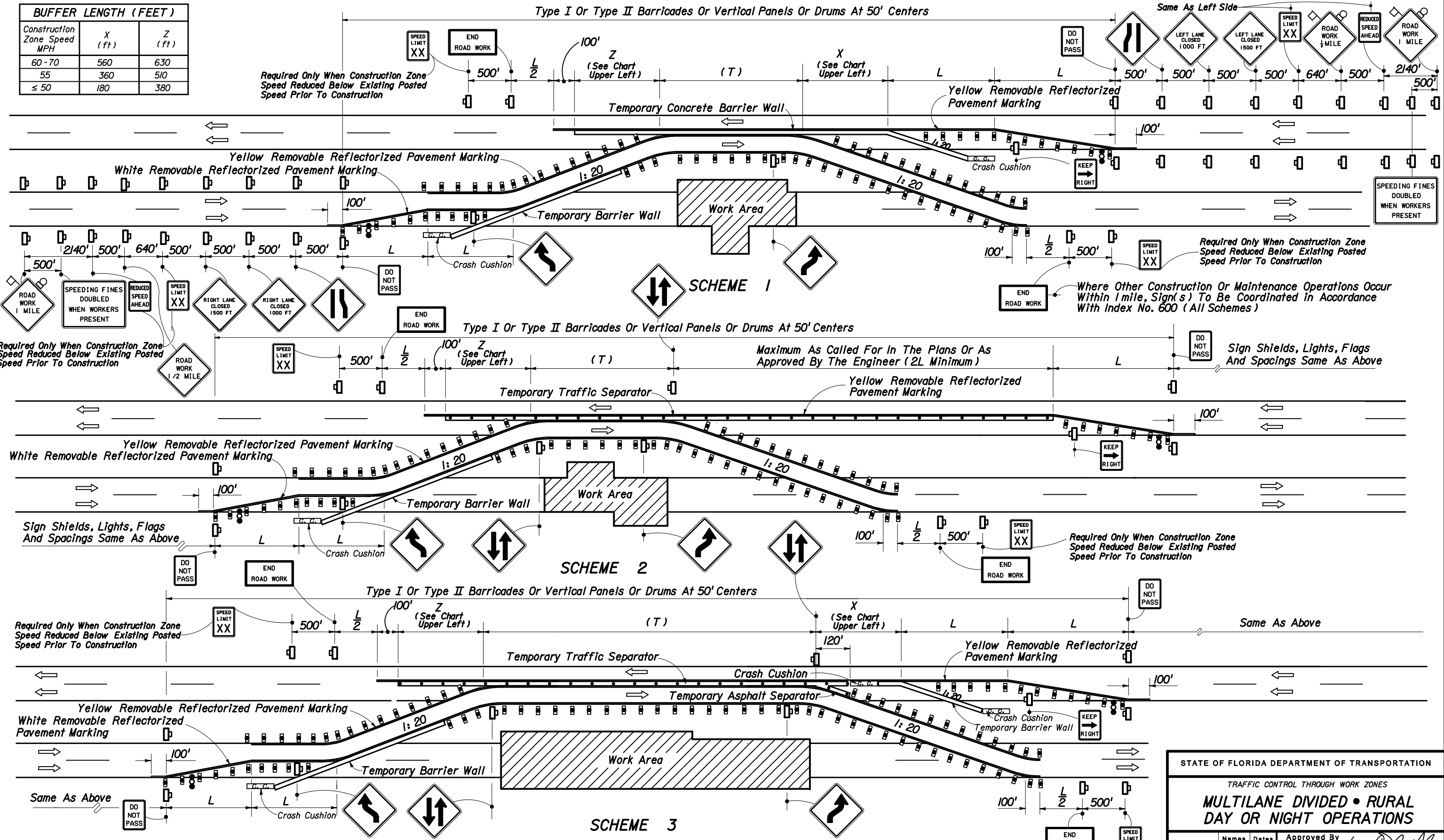
Required Only When Construction Zone Speed Reduced Below Existing Posted Speed Prior To Construction

Required Only When Construction Zone Speed Reduced Below Existing Posted Speed Prior To Construction

Same As Above

Required Only When Construction Zone Speed Reduced Below Existing Posted Speed Prior To Construction


Note: See Sheet 1 of 2 for Scheme Applications



STATE OF FLORIDA DEPARTMENT OF TRANSPORTATION

TRAFFIC CONTROL THROUGH WORK ZONES

MULTILANE DIVIDED • RURAL DAY OR NIGHT OPERATIONS

Names	Dates	Approved By		
Designed By	12/87	 Roadway Design Engineer		
Drawn By	12/87			
Checked By	12/87	Revision	Sheet No.	Index No.
		00	2 of 2	614